

WEATHER

Table with weather forecast: Min, Max, Precip. for Jan 29, 30, 31, Feb 1, 2, 3, 4.

The Chelsea Standard

QUOTE

"He who loves not his country can love nothing." —Byron.

ONE HUNDRED-FIFTH YEAR—No. 34

16 Pages This Week

Plus 4-Page Supplement

CHELSEA, MICHIGAN, THURSDAY, FEBRUARY 6, 1975

15c per copy

SUBSCRIPTION: \$6.00 PER YEAR

Cagers Win Over Novi With Effective Press

Bulldog cagers ran their winning string to five Friday night by obliterating Novi, 72-43, a victory that allowed them to move into a second-place tie with Saline. Both teams are now sporting 7-2 records after the Hornets' double-overtime loss to league leader Milan, 47-45.

Alber Hits for 35 in Double Overtime Win

Dave Alber hit for a 20-foot jump shot with one second remaining in a second-overtime to lead Chelsea cagers to a 67-65 victory over New Boston Huron Tuesday night. The win upped the Bulldogs' season record to 13-2.

Wrestlers Pin Saline, Regain League Lead

Chelsea grapplers nipped a tough Saline team Thursday, 28-25, while Dexter and South Lyon recorded losses, to move back into first place in the Southeastern Conference.



SEVENTH GRADE ENSEMBLES earning Division I ratings at Saturday's Solo and Ensemble Festival at Henry Ford Community College are pictured above, from left, in front, Marilyn Cobb, Mary Anne Hughes, Tracy Alexander, and Vickie Smith, clarinet quartet. In back, from left, are Gayle Beyer, Jeanette Morrison, and Cindy Wolter, flute trio; Kelly Headricks, Karen Blanchard, Sally Vaught, and Debbie Monbaum, woodwind quartet.



FESTIVAL WINNERS in ensemble competition were these Beach Middle school musicians who earned first division ratings in last Saturday's Solo and Ensemble Festival. In front, from left, are Cindy Bareis and Sue Pawlowski, who were members of a clarinet duet; and Cindy Klobuchar and Ann Umstead, also members of a clarinet duet. In back are John Whitaker, Mark Dickens, Jeff Stirling, and Mark Snyder, members of a brass quartet; and Sheryl Kiel who was a partner of Lori VanRiper (not pictured) in a clarinet duet; and Cindy Klobuchar, who was a partner of Ann Umstead (not pictured) in a clarinet duet.



DIVISION I SOLOISTS from Beach Middle school who performed Saturday at the junior high school Solo and Ensemble Festival at Henry Ford Community College are John Whitaker, trombone; Mark Snyder, cornet; Sheryl Kiel, clarinet; and Cindy Klobuchar, clarinet. Not present for photo was Jim Breza, a cornet player who also received a first division rating.

Beach School Musicians Score Well in Their First Festival

Band and strings musicians from Beach Middle school captured a total of 12 Division I ratings and 22 Division II ratings in last Saturday's junior high school Solo and Ensemble Festival at Henry Ford Community College.

Ann Arbor Federal Branch Office Robbed Of More Than \$6,000

Nurses Aide Course Needs More Students

Space for three students remains in Chelsea High school's nurse's aide course, all three of which must be filled to enable the course to continue, according to Mrs. Annabelle Closson, course instructor.

Two Hoodlums Obtain Money With Fake Bomb Threat

FBI agents continued their search this week for a Superior township man who remains at large after his part in robbing Chelsea's branch of Ann Arbor Federal Savings Friday of more than \$6,000.

Four Place in JV Wrestling Tournament

Junior Bulldog entries in Saturday's Chelsea Junior Varsity Wrestling Tournament landed one championship, one second, and two fourth-place finishes.

Peanut Sale Adds to March of Dimes Fund

Nearly 1,000 bags of peanuts found their way into Chelseaites' hands last Saturday when local Cub Scouts and Boy Scouts took to the streets to peddle peanuts and balloons to benefit the local March of Dimes campaign.



PEANUTS AND BALLOONS never seem to have quite the extraordinary appeal that they do when they're being sold by Chelsea Cub and Boy Scout troops to benefit the annual March of Dimes drive. Above, scouts Jeff Jahnke, Leon Durgan, Louis Jahnke, and Scott Poquette surround potential customer Bruce Messing and daughter Tamara, 21 months, during the sale Saturday.

Cager of the Week



RICK ROBBINS is a 6'1" senior forward who believes that Chelsea's cagers will finish the season "at 18-2, and we'll win three or four tournament games. If anyone wants odds, they can call me..." Robbins, who played junior varsity basketball as a sophomore, also ran cross country for Chelsea this past fall. A member of the National Honor Society who was named to Who's Who of American High School Students, Robbins describes his future after high school graduation as "hazy." Coach Ballstrere says of Robbins, "Rick had done a fine job for us this year with his good moral support, team attitude, and good hustle. He's a fine young man to work with." The son of Daniel and Barbara Robbins, he has one sister, Gayle, in the Navy, and two brothers, Mike, 13, and Scott, four.

Concerned Group Defining Policy, Goal

In a meeting characterized by one participant's statement that she was "sick of coming to meetings and not doing anything," Chelsea's core group of concerned citizens who have met three times in the OEO office managed to come up with some concrete proposals and ideas last Saturday.

Tops on the list was the scheduling of a guitar and drum instruction session for Saturday afternoon, Feb. 8, from 1 to 3 p.m., for the musically and not-so-musically inclined, taught by three volunteers contacted by one of the meeting's participants.

Future seminars of this type, the group has tentatively decided, will be the main thrust of the group's action. Working under "the basic premise that kids in this town want something to do," suggestions seemed to agree that the best community program would be one that "provides a variety of things to keep kids' interest—including speakers, programs, and different interest groups."

Although much discussion during the two-hour meeting revolved around the mechanics of planning such seminars (particularly the number of volunteers needed to run any group activity, whether a supervisor-type set-up is needed to assure that planned activities actually get planned by someone), little about the actual content was presented, since the group hopes to contact the youth of the community for input into desired programming.

Mrs. Katie Harat, Chelsea's OEO director, intends to contact a local man who is conducting a recreation survey among young people and make use of his results, if possible. Three other participants in the group, Debbie Rooke, Cheryl Spector, and Gail Cordell, hope to be scheduled into time periods during the high school day either this week or next when they will be able to make students aware of the group's meeting and discover what interest, if any, they have in the group and its potential projects.

Early in Saturday's meeting, the idea of a "hotline" arrangement for Chelsea was abandoned, primarily due to obvious staffing problems in trying to conduct seminars and run a reasonably effective hotline at the same time.

"It's obvious that we can't do both of these things," said one participant. "We just don't have enough people."

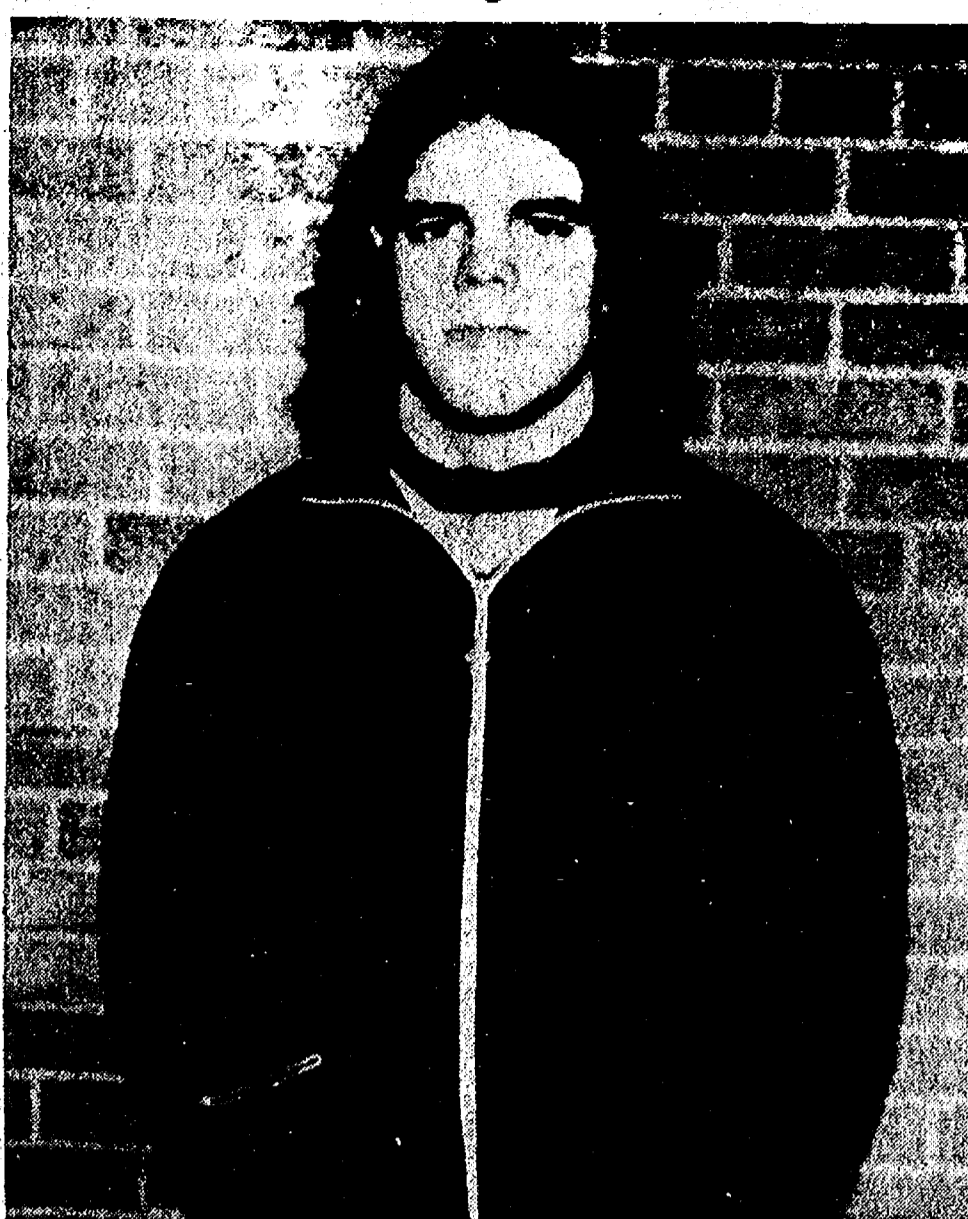
Instead of initiating a hotline devoted solely to Chelsea, the group agreed instead to draw up a list of existing local and Ann Arbor facilities that handle crisis counseling and referral. In addition, Mrs. Harat is investigating a possible training program of Community Mental Health Center for two participants who expressed an interest in being trained for hotline-type work.

This Saturday's meeting, scheduled from 11 a.m. to 1 p.m. in the OEO office at 140 Park St., should include not only tentative information gained from the recreation survey being conducted and contact with high school students, but also reports on the training of volunteers for hot line work.

Group member Chuck Altman, a staff person from the Police Support Unit of the Washtenaw County Sheriff's Department, was informally elected to draw up a "philosophy" for the group, including its long-range goals and original intention. Suggestions for names for the group will also be gratefully and enthusiastically accepted at this meeting.

Participants in the group encourage all interested local residents to attend Saturday's meeting.

Wrestler of the Week



WRESTLER OF THE WEEK, as chosen by Coach Richard Bareis, is senior Doug Reed, who was selected for his important fall victory at 134 pounds in last Thursday's defeat of Saline, 28-25, which put the Bulldogs back in first place in the SEC. Reed currently posts a 14-7-1 record, and has earned second-place finishes at both the Dexter and Howell tournaments.

JV Cagers Fall to Novi

Junior Bulldog cagers were edged out by Novi, 42-40, Friday night, primarily on the weakness of their own shooting arms.

JV squad hit for a meager 21 percent from the floor in the loss which dropped their over-all record to 7-7.

High scorer for the game was Anthony Houle, who was good for 21 points, and Don Morrison, who hit for eight.

Rebounders were paced by Randy Sweeny, who pulled down 13, Tony Robards, who had 11; and Anthony Houle and Don Morrison, who hauled in 10 each.

"No Reservations Needed" is the title of a 20-minute film in color illustrating the parks and facilities of the 10 Metroparks. Speakers are available "free" by contacting the Huron-Clinton Metropolitan Authority, 600 Woodward Ave., Detroit, 48226 or phone 961-5865 (Detroit).

Telephone Your Club News To 475-1371

NOTICE TO LYNDON TOWNSHIP RESIDENTS

Road Commission personnel will be attending the Feb. 8th Lyndon Township Board meeting at Lyndon Town Hall. Meeting to start at 8:30 a.m.

LYNDON TOWNSHIP
DORIS FUHRMANN, CLERK

CUSTOM
BUMPING and PAINTING
FREE ESTIMATES - ALL MAKES
Get the Best for Less!
FRANK GROHS CHEVROLET
Phone 426-4677 Dexter, Mich.

JV Cagers Fall Short in Rally

Junior Bulldogs battled back from a 17-point deficit with New Boston Huron Tuesday night, but fell two points short of overtaking them. Final score showed a Chelsea loss, 61-59.

Leading scorers in the contest were Don Morrison with 16 points, Randy Sweeny with 14, Dean Thompson with 10, and Pete Feeny with eight.

Rebounders were paced by Tony Robards with nine and Don Morrison with eight.

According to the Veterans Administration, programs for the nation's seven million Vietnam-era veterans accounted for approximately 30 percent of the agency's \$14 billion budget in fiscal year 1974.

Would you like to have Sunday's New York Times available Monday morning?
If so, come in and sign up for it.
Village Books of Chelsea
Alan and Jaynor Johnston
105 1/2 S. MAIN ST. PH. 475-9260

POLE BUILDINGS
GO UP EASILY...ECONOMICALLY
ANY TYPE - ANY STYLE - ANY SIZE
Residential - Agriculture - Commercial
PROMPT CONSTRUCTION DATES
Low prices and high quality workmanship.

OWEN CUSTOM BUILDERS
LICENSED & INSURED - MANY SATISFIED CUSTOMERS
JACKSON (517) 769-2669

Full Line Supermarket
BEER - WINE - LIQUOR
LOTTERY TICKETS
MARATHON GAS PUMPS
2-CYCO GAS PUMPS
AUTHORIZED FOOD STAMP STORE

Jiffy market

Big Enough To Serve You . . . Small Enough To Know You!

Open 7 Days A Week Sun. thru Fri. 8-8
Saturday, 8 a.m. to 10 p.m.
Corner Sibley & Workner Rds. PHONE 475-1701
Sale Prices Effective Thurs., Feb. 6 thru Sun., Feb. 9

Guaranteed Satisfaction - Courteous Service

WAY BAKING CO.
KLEEN-MAID BREAD... 1 1/4-Lb. Loaves. **39¢**
MICHIGAN GRADE A
SWEET BUTTER lb. **79¢**
PRINGLES
POTATO CHIPS 9-Oz. Pkg. **39¢**
BORDEN'S GLACIER CLUB
ICE CREAM 1/2 gal. **79¢**
REG. 39¢ VARIETY ASSORTMENT
COOKIES 3 pkgs. **\$1.00**
KELLOGG'S
CORN FLAKES 1-Lb., 2-Oz. Pkg. **49¢**
GOLDEN RIPE
BANANAS lb. **19¢**

U.S.D.A. Choice Freezer Beef
SIDES - FRONTS - HINDS - LOINS - FULL RIB
Cut, Wrapped, Frozen To Your Specifications.
NOTE!! 30 HEAD OF LOCAL FARM BEEF FOR SALE.
Buy direct from farmer and we'll process it.
CORN FED BEEF AT ITS BEST!

BASKART SPECIAL
FRESH GROUND - LEAN
HAMBURGER. lb. **79¢**
SATISFACTION GUARANTEED
HOLSUM
Hamburger or Hot Dog Buns 8-Ct. Pkg. **49¢**

Coca-Cola Company Big Deal BIG BOTTLE
1 Qt., 1 Pt. (48-Oz.)
TAB SPRITE COKE FRESCA
YOUR CHOICE 49¢

FANTA SODA POP FLAVORS

JIFFY MARKET MEAT DEPT.
WHOLE PORK LOINS
As is or Sliced **89¢ lb.** Lean and Tender

PORK BUTT ROAST . . . lb. **79¢**
PORK STEAK lb. **89¢**

FRESH - TENDER **Beef Liver lb. 59¢**
32-OZ. PKG. COURTLAND VALLEY'S FINEST **Sauerkraut, . . . 39¢**

CAMELOT **Liver Sausage or Braunschweiger, lb. 49¢**
1-LB. HOME-MADE GARLIC OR REG. **Pork Sausage 89¢**

FARMER PEET'S **FRANKS..lb. 98¢**
FARMER PEET'S RING **Bologna . . lb. 89¢**

FARM - MAID Homogenized MILK
gal. **\$1.29**

A BEST BUY

FARM MAID 1-LB. CRTN. **COTTAGE CHEESE 59¢**
FARM MAID PURE **ORANGE JUICE . . . 1/2 gal. 59¢**
FARM MAID **HALF and HALF qt. 49¢**

Buy the Best - Buy Farm Maid!

JIFFY MARKET SPECIAL!
CIGARETTES
All Brands and Sizes **39¢** pack

JIFFY MARKET MARATHON GAS
REGULAR **GAS 49.9¢** Gal. Including All Taxes
MINIMUM SALE \$3.00
OPEN 7 DAYS A WEEK
MORNING 8 a.m. to 8 p.m. NIGHT SATURDAY, 8 a.m. to 10 p.m. **2 - CYCO GAS**



McCLAIN-ROY: Mr. and Mrs. Donald McKinley, formerly of Chelsea, announce the engagement of their daughter, Jackie Lee McClain, to James Roy, son of Mr. and Mrs. George Roy, of Huntington Station, N. Y.



BRISTLE-RUBINO: The engagement of Eileen R. Bristle to Charles H. Rubino has been announced by the future bride's parents, Mr. and Mrs. Leroy Bristle of 19020 Old US-12, Miss Bristle, is a graduate of Chelsea High school who is currently attending Central Michigan University.

ALTAR SOCIETY

St. Mary Altar Society held their meeting Monday evening, Feb. 3 at the school hall. There were 24 members and three guests present.

Reports were given by the standing committees. Progress is being made on our Parish Cook Book and anyone who wishes to contribute more recipes may do so by March 1, which is the deadline.

The Veterans Administration administers approximately \$36 billion worth of government life insurance for about 6 million policyholders.

VIVIANE WOODARD

COSMETICS

475-8785

Dorothy Ortring, Director

ROGERS CORNERS STUDY GROUP

Rogers Corners Study Group held its monthly meeting Jan. 22 at the home of Mrs. Warren Hoover, with Mrs. David Raleigh as co-hostess and 15 members present.

Following opening of the meeting by Mrs. Loren Koenigter and approval of the secretary's and treasurer's reports, a thank-you note was read from Home Meal Service, and Mildred Huehl read an article on the Universal Products Code.

Topic was "What I Learned from a Teen-ager," and Frank Teachout gave a talk on no fault insurance.

At the February meeting, scheduled for Feb. 18 at the home of Mrs. Mildred Huehl with Mrs. John Morris as co-hostess, roll call topic will be "What I Do When I Do What I Please." A silent auction also will be held.

A report was given on a trip to see "Irene," by Karol Morris, and other members who attended. Telephone Your Club News To 475-1371.

Visiting Lady Judge Observes Procedure in 14th District Court

Monday and Tuesday of this week the traveling 14th District Court had a pair of judges on hand: one the experienced, Judge Henry Arkison, presiding judge for the 14th District, and the other, a relative novice, Judge Patricia Costello, newly-elected to her post in the 1st District Court in Monroe.

Judge Costello was a participant in a program designed for new members of the judiciary, in which new judges observe procedures and cases in an experienced judge's courtroom. According to the Center for the Administration of Justice at Wayne State University, the program is designed to "provide the guest with a broader and keener understanding of the judicial process and of the matters with which he will be immediately concerned."

Suggested topics of education for judges include both the civil and criminal realm, ranging from mechanics of court appeals and procedures, motion practices, pre-trial conferences, small claims practices, 15-day mental commitments, and default judgments to search and arrest warrant practices, arraignments on warrants, conducting preliminary examinations, probation supervision and violations, appeals procedure, and courtroom decorum.

In other words, the observing experience is expected to supply the new judge with an accurate idea of the roles of the judge, the type of things generally omitted from legal literature—how a judge becomes a judge once elected to the post.

Judge Costello observed Chelsea's court in session Monday afternoon, and travelled with Judge Arkison and his staff to Saline Tuesday. The 1st District Court where she presides, she notes, is not a traveling court. The courthouse in Monroe, in fact, houses three district courts.

In addition to her visit to Chelsea, Judge Costello says, her training program has involved observing the district court in Ann Arbor, and participation in a videotaping session in which new judges presided over cases that utilized actors as defendants.

"At the end of the month, we'll go to Detroit to see the tapes," she said. "A psychologist will also be present with us to discuss our reactions and responses to the cases, which should be interesting." A program in criminal and civil procedures is also planned for March, she added.

Judge Costello, who has already begun presiding at the 1st District Court in Monroe, reports that "I've learned so much more than I expected to from this. Judges sharing their experience with us will be, I'm sure, extremely helpful."

A graduate of DePaul University in Chicago, Judge Costello was employed in the trust department of an Illinois law firm following her admission to the Illinois bar. She retired from practice after her marriage to devote her time to her husband, also an attorney, and their six children. Following her husband's death in 1966, she reviewed for a year and was admitted to the bar in Michigan, joining her husband's former firm, Weipert, Costello, and Lavoy of Monroe. She was elected judge in the November election.



TWO JUDGES were present in the traveling 14th District Court Monday and Tuesday, when Judge Patricia Costello, pictured above with 14th District presiding Judge Henry Arkison, observed procedures in the Chelsea and Saline courtrooms. Judge Costello was elected in November to the 1st District Court in Monroe, and visited Chelsea as part of a training program organized to familiarize newly-elected judges with their various and sundry judicial duties.

Girl Scout Cookie Sale Goal 25% Higher Than Last Year

Girl Scouts here will fly in the face of the economy Feb. 21 when they set out to sell 25 percent more Girl Scout cookies than they did a year ago. The 1975 Huron Valley Girl Scout Council Cookie Sale goal is \$350,000, \$90,000 more than in 1974, according to Mrs. Ruth Weber of Ann Arbor, sale chairman.

Increased sales are needed merely to meet the cookie sale profit of last year, Mrs. Weber explained. Even though the cost of the cookies has gone up 8.4 cents to 51 cents per box, the selling price has been kept the same as last year, one dollar per item. To help achieve the goal, Girl Scouts are offering two new items in the sale this year—Sesame Crisp Crackers (a thin cracker with sesame seeds) and Girl Scout tea, an authentic English Breakfast blend of teas from the Keemun district of China, imported by John Wagner & Sons of Philadelphia.

Five traditional Girl Scout cookies will again be sold, including Lemon Cremes (vanilla cookies with lemon creme centers), Oxford Cremes (an assortment of vanilla and chocolate cookies with vanilla creme centers), Scot-Teas (sugar-topped shortbread), Mint (chocolate wafers with mint coating) and Savannahs (peanut butter cookies and filling).

The family-size boxes contain from 24 to 42 cookies, 80 Sesame Crisps, and 16 tea bags.

Both Scot-Teas and Mint cookies are Kosher, having received the circle-U designation from the Union of Orthodox Faith. Girl Scouts cookies and Sesame Crisps sold here are products of Berry Biscuit Co., a division of Quaker Oats Co. of Chicago. The tea importer is also a division of Quaker Oats.

Profits from the cookie sale are shared between the selling troops and the Huron Valley Council. Fifteen cents of the profit goes to the troop to finance community service projects, camping expeditions and other troop programs. Profits going to finance the general operations and camping programs for a growing Girl Scout enrollment of the Huron Valley Council will drop 8.7 cents per box from a year ago, to 34 cents. In the past cookie profits have paid for one-third the cost of troop camping. Cookie money has also

Beach School Gym Roof Damaged By Strong Wind

A portion of the roof of Beach Middle school was torn off by wind early last Thursday afternoon, but has since been repaired, according to Principal Alan Conklin.

Conklin said that apparently the wind caught and peeled away one layer of the roof, above the gym area. A small amount of plaster fell into the gym, but otherwise the interior of the building was not effected.

Because of uncertainty about the nature of the damage, the gym was closed for further use for the rest of the day. Workmen arrived the same day and repaired the damage.



80th BIRTHDAY: Mrs. Lillie Louise Merrell, a resident of Chelsea United Methodist Home, was honored Jan. 25 with a tribute presented to her by her son, the Rev. Roger W. Merrell, and a performance of the Milford United Methodist church Chancel Choir, in celebration of her 80th birthday.

Choral Concert at Methodist Home Honors Mrs. L. Merrell

Following a concert of the Milford United Methodist church Chancel Choir at Chelsea United Methodist Home Jan. 25, Mrs. Lillie Louise Merrell was presented with a tribute in her honor written by her son, the Rev. Roger W. Merrell, in celebration of her 80th birthday.

Mrs. Merrell spent the two weeks prior to her birthday with her son and his wife, Josie, who directed the Milford choir's performance at the Home.

In his tribute, the Rev. Merrell recalled that his mother trained for the position of junior church leader and in children's work at Albion College, and held Junior Church in all churches in which her husband served as a minister. Six of her students entered the ministry; three became minister's wives, and three became missionaries.

As a 16-year Campfire Guardian, she worked with not only Methodists, but Catholics, Jews, and Russians, and she also directed a summer camp for 10 years, with her charges taking many honors for cleanliness and most economically-cooked meal.

Also at her husband's churches, she was organist at several locations and served as children's choir director.

Mrs. Merrell held every office in the WSCS, including 10 years

as president at the Chelsea United Methodist Home unit. She has also served for six years as president of the Women's Christian Temperance Union.

Also at her husband's churches, she planned and managed dinners and banquets with "one-third the normal crew and more efficient service," according to many church leaders.

In Ann Arbor, she was secretary and chairman of the nominating committee of Ministers' Wives of the Ann Arbor District.

She was also chosen Methodist Woman of the Month by the Conference WSCS.

And in addition to all this, her son points out, Mrs. Merrell raised a family of five, and "tirelessly cared for their needs."

Magic Mirror Beauty Salon

Open Tuesday thru Friday 9 a.m. to 9 p.m. Saturday, 8 a.m. to 3 p.m.

PHONE 665-0816

CARPET REBIRTH

Give your carpet a new lease on life by cleaning it regularly.

JET SPRAY CARPET CLEANING

Use Your Phone 761-3025 or 475-1509 BankAmericard Ask for John Lixey.

SPRING FASHIONS NEW STYLES

We have them by BOBBY BROOKS GARLAND QUEEN CASUAL

Shop now for best selections!

THE WINTER SALE IS ON!

1/3, 1/2 and More Off BASEMENT and MAIN FLOOR

The Bargain Floor Is Loaded SHOES and much more!

1/2 and More Off

SAVE NOW AT

DANCER'S Chelsea's Friendly Dept. Store



DEN 1, PACK 415-- We held our weekly meeting Thursday, Jan. 23. We opened with the den cheer. We finished our animal hides for our trophy boards, and we will put them on the boards at home. We found a bat behind some wood. It spread out its wings and we got a good look at it. It crawled around a little. You have to be careful with bats because they sometimes have rabies. We closed our meeting with the Cub Scout Promise. Jerry Hammersmidt brought treats. Greg Markle, scribe.

Canoists who wish to challenge the Clinton River should write to: Clinton River Canoe Map, in care of Huron-Clinton Metropolitan, 600 Woodward Ave., Detroit 48226.

DOSSO Carpet Cleaning

Happy Valentine's Day! Here's a wet weather suggestion for cleaning. We recommend Host, the new method of cleaning carpets without water. The carpet is dry and ready to walk on immediately. Use our Host Electric Up-Brush. It's easy. Clean 40 sq. yds. only \$9.95. Phone for information.

MERKEL BROTHERS

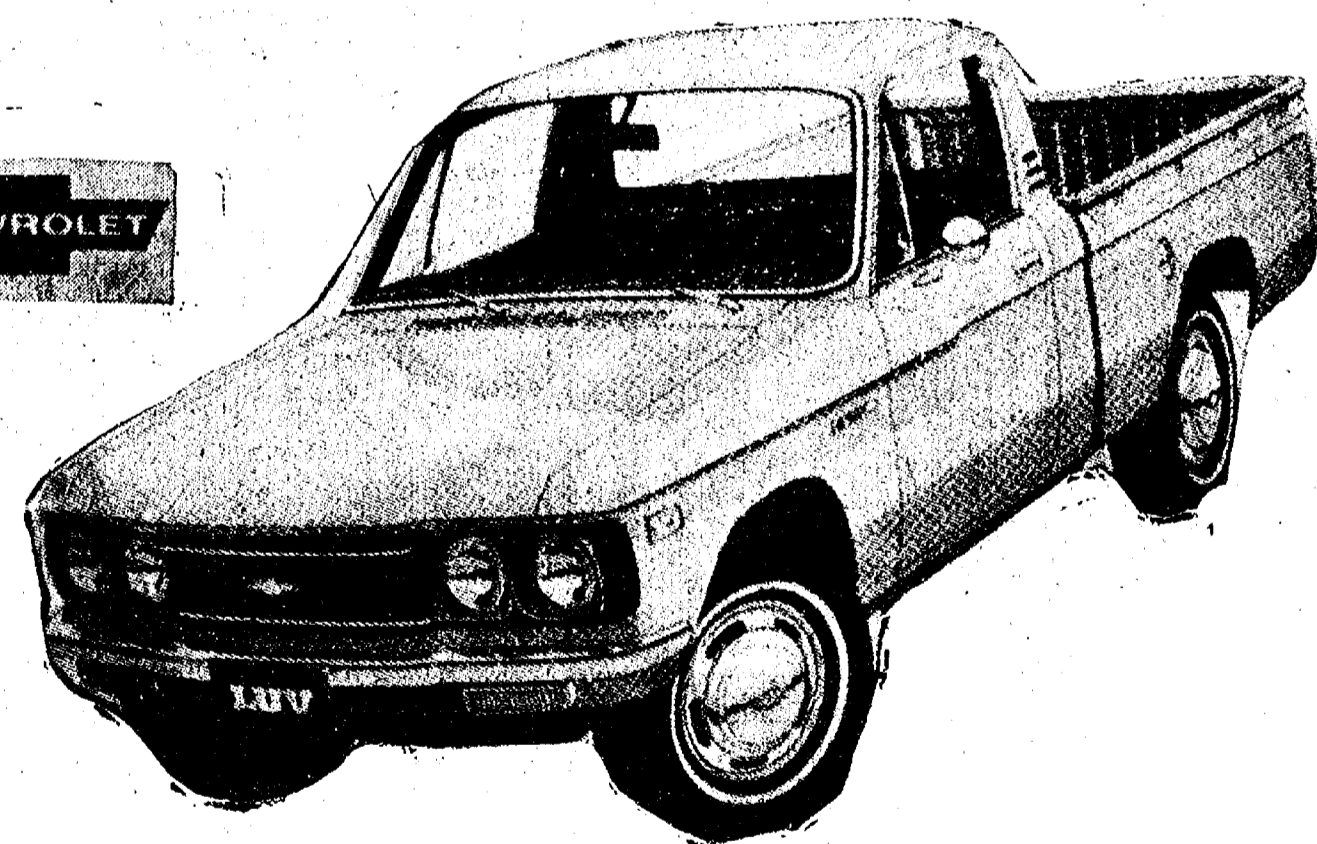


CARESS MORELIA Keepsake TRADITIONAL WEDDING RINGS Matched Keepsake wedding rings, sculptured and textured in 14K yellow or white gold.

WINANS JEWELRY Rings enlarged to show detail. Trade-Mark Reg.

ECONOMIZE FOR '75!

Buy a new '75 Chevy L.U.V. Pick-up now and save \$\$\$. Plus, enjoy 30 miles per gallon and low maintenance cost on America's most popular little utility vehicle.



This rugged little pick-up comes equipped at no extra cost with a heavy duty 4-cyl. overhead valve engine and a 4-speed synchro-mesh transmission. We have 8 of these trucks in stock for immediate delivery at this special sale price.

\$2695.00 Plus frt., taxes and accessories of your choice.

Lloyd Bridges Chevrolet, Inc.

"For Quality and Service at Low Prices"

NEW SALES HOURS

Phone

405 N. MAIN CHELSEA

OPEN DAILY 8 a.m. to 6 p.m. SATURDAY 8 a.m. to 5 p.m. MONDAY EVENINGS until 8:30 p.m.

475-1373

Community Calendar



Lima Extension Study group, Feb. 12, 10:30 a.m., Lima Center Hall, topic "Live To Avoid Heart Attack and Stress, C.P.R." Hostesses Helen Bulick and Janet Hegadon.

No Chelsea Community Farm Bureau meeting this month. Watch for March meeting.

Open meeting for concerned citizens interested in youth of the community, Saturday, Feb. 8, 11 a.m. to 1 p.m., OEO office, 140 Park St.

Chelsea Child Study Club, Tuesday, Feb. 11, 8 p.m., home of Shirley Chapman Mrs. Robert Paul will speak on astrology. Guests are welcome at this meeting.

Town and Country Child Study Club, Tuesday, Feb. 11, 6:30 p.m., home of Bobbie Johnson, 211 E. Middle St. Program: international gourmet dinner.

Class of 1965 of Chelsea High school, planning meeting for 10-year reunion, Saturday, Feb. 22, 7:30 p.m., home of Dick McCalla, 2435 Peckins Rd. Anyone from the class is invited to attend. Phone 475-7969.

Chelsea High school faculty will play a team of Detroit Lions in basketball, Saturday, Feb. 8, 7:30 p.m., Chelsea High school.

Weekly Ann Arbor Saturday night singles dance, live band, YM-YWCA, 350 S. Fifth, Ann Arbor, 9 p.m. to 12 midnight.

Sylvan Township Board meeting the first Tuesday of the month, at 7 p.m., at Sylvan Township Hall.

American Legion and Auxiliary hospital equipment available by contacting Pat Merkel at 475-1824.

Chelsea Home Meal Service delivers one hot meal a day to elderly and disabled living in the Chelsea area. For information call 475-8014 or 475-2923.

Chelsea Band Boosters meet second Thursday of every month, Chelsea High school band room, 8 p.m. All band parents are members.

Senior Citizen Fun Nite every Friday evening at 7:30.

Chelsea Co-op Nursery applications for 1975 classes are now being taken. For information, call Jearl Mull, 426-8822. xadv12if

Humane Society of Huron Valley has dogs and cats for adoption. Owners may reclaim their lost pets. Phone 682-5585. Open from 9 a.m. to 5 p.m. daily; Sunday, 1 p.m. to 5 p.m. 100 Cherry Hill Rd., quarter-mile south of Plymouth Rd. at Dixboro.

Weekly Tuesday Nite Singles Club, dance, 9 p.m. to midnight, Ann Arbor YM-YWCA, with live band.

March of Dimes...
(Continued from page one)

her thanks to area grocery stores, Schneider's, Kusterer's, Rick's, and Jiffy Market, which contributed the cookies and hot chocolate provided for scouts at the March of Dimes headquarters. The headquarters, at the former Buick showroom on N. Main St., was furnished by Longworth Plating Co. She expressed a special thanks to Paul Pratt, who assisted her at the headquarters during the entire sale.

Mrs. Betty Freeman, chairman of the Mothers March conducted two weeks ago, Wednesday submitted a final total for the canvassing of \$878.

Telephone Your Club News To 475-1371

JUST ARRIVED!

LEVI JACKETS

Sizes 36 to 44

STRIETER'S MEN'S WEAR

1914 - Our 60th Year - 1974

CHELSEA AMERICAN LEGION FISHING DERBY

at Cavanaugh Lake

SATURDAY, Feb. 8-7 a.m. and SUNDAY, Feb. 9
(8 a.m. to 5 p.m.)

Breakfast Saturday, lunches & refreshments

EUCHRE TOURNAMENT SATURDAY

Beginning at 7 p.m.

DEATHS

Sherman DeMint
Former Grass Lake Area Resident Dies at Tecumseh

Sherman Harold DeMint, 56, of 203 Coman St., Clinton, died Monday, Feb. 3 at Herrick Memorial Hospital in Tecumseh. He was a former resident of the Grass Lake area.

Born April 21, 1918 in Moscow, he was the son of Henry and Druella Jones DeMint. He married Marie McAtee Oct. 14, 1938. She survives.

He worked as a machinist at Lynairs, Inc., in Jackson. He was a member of Masonic Lodge No. 116, F&AM of Grass Lake.

Surviving, in addition to his widow, are one daughter, Mrs. Fred (Carol) LeBlanc of Clinton, with whom he made his home; three sons, Harold of Willis, Earl of Sumpter, and David of Ypsilanti; one brother; and five grandchildren.

He was preceded in death by his parents and one brother.

Funeral services will be conducted Thursday at 1 p.m. at the Proctor Funeral Home in Clinton by the Rev. Hugh Dalton. Burial will follow in Riverside Cemetery, Clinton.

Harold E. Matthews
Chelsea Woman's Father Dies Friday at Whitehall

Harold E. (Pink) Matthews, of 2701 Crystal Lake Rd., Whitehall, died Friday, Jan. 31, at the age of 64.

Born April 14, 1910, in Muskegon, he was a graduate of the University of Michigan and married Adeline Viola Bonifer at Dearborn in January of 1937.

He was a science teacher at Orchard View High school for the past 14 years and was a member of the Michigan Education Association. He was a 32nd degree Mason of Golden Rule Lodge No. 159, F&AM, and belonged to the Ancient and Accepted Order of the Scottish Rites.

Surviving are two daughters, Mrs. Morgan (Leschen) Morgan of Chelsea and Mrs. David (Taschen) Monroe, of Gregory; four brothers, Harvey of Fruitport, George of Clawson, and Walter and Frederick, both of Muskegon; two sisters, Mrs. Ruth Eels of Ormond Beach, Fla., and Mrs. John (Betty) Gillette of Royal Oak; and six grandchildren.

A daughter, Gretchen Matthews, preceded her father in death in 1962, and a brother, Richard, died in 1950.

Funeral services were conducted Sunday at 1 p.m. at the Walburn Funeral Home in Muskegon by the Rev. Robert S. Treat. Remains were taken to Staffan Funeral Home Monday, where a funeral service was held at 2 p.m. Interment followed in North Lake, Gregory.

New 4-H Horse Club Organizing

A brand spanking new 4-H horse club is in the making for Western Washtenaw county, the Happy Horseman 4-H Club.

This new club, led by Mrs. Shirley Carlson of Manchester, has eight new members and an honorary member, and two co-leaders. Present members are Linda Carlson, president; Tina Carlson, vice-president; Pauline Kuebler, secretary; Patty Carlson, treasurer; Gerald Ratzlaff, sergeant-at-arms; and Stanley Kuebler, and Debra Elliott, members. Julie Hodge is honorary member, as she cannot show in Washtenaw county, since she lives in Lenawee.

Co-leaders are Mrs. Sandra Ratzlaff and Stephanie Hendricks. Club meetings are held at Sharon Township Hall near Manchester. Any boy or girl interested in joining the club and learning about horses and ponies in general may call Mrs. Carlson, 428-8829, Mrs. Ratzlaff, 475-2503, or Mrs. Hendricks, 456-7827.

At present, Happy Horsemen are planning a bake sale to earn money for their club shirts, flags, club horse blankets, etc. The bake sale is scheduled for Saturday, Feb. 15 at Sylvan Township Hall. They are also planning a club band, since all of them play musical instruments.

BIRTHS

A daughter, Tammy Lynn, Thursday, Jan. 30, to Mr. and Mrs. Leslie Leggett at St. Joseph Mercy Hospital, Ann Arbor. Maternal grandparents are Mr. and Mrs. Richard Bauer. Paternal grandparents are Helen Leggett and Henry Leggett.

A daughter, Emily Marysia, born Feb. 1 at St. Joseph Mercy Hospital in Ann Arbor, to Larry and Lois Shively of Silver Fox Dr. Paternal grandparents are Mr. and Mrs. Phillip Shively of Midland and Gulf Shores, Ala.; paternal great-grandmother is Mrs. Emmett Gooch of Midland; maternal grandparents are Mr. and Mrs. Stanley Kowalski of Elkridge and Ocean City, Md.

A son, Ryan Scott, to Scott and Sandy Foster, on Jan. 29 at St. Joseph Mercy Hospital. Maternal grandparents are Mr. and Mrs. William L. Miller; paternal grandparents are Mr. and Mrs. Robert L. Foster.

Wrestlers Win...
(Continued from page one)

Finishing in second place in the tournament in his weight class was Mike Young, who wrestled in a pair of close matches prior to losing in the finals.

Finishing in fourth place were Len Hafner at 141 pounds and James Bollinger at 188 pounds.

Participating in the tournament were JV squads from South Lyon, Dexter, Saline, Lincoln, Novi, Columbia Central, Pinckney, and Chelsea.

Richard L. Roudebush, appointed by President Ford as Administrator of Veterans Affairs, is the ninth man to head the nation's largest independent federal agency since its establishment in 1930.

Subscribe today to The Standard!

Delhi, Dexter-Huron and Hudson Mills Metroparks, located near Dexter, are open year-around.

Church Women United Serve in Many Areas

Following a meeting in January and prior to their annual organization of World Day of Prayer in March, Church Women United has offered a brief overview of its aims, projects, and personnel in an attempt to make community women aware of its intent and purposes.

The organization itself is described as "a national movement through which Protestant, Orthodox, and Roman Catholic women express the ecumenical dimensions of our faith and work."

Projects supported by Church Women United are the House-by-the-Side-of-the-Road, which is helped by collecting clothing and sending helpers twice a month to sort, mend, and assist; Home Meal Service of Chelsea, which is a joint project of Church Women United and the Jaycee Auxiliary;

and the annual UNICEF fund drive at Halloween.

Funds collected by Church Women United are contributed to Michigan Migrant Ministry, International Student Fund, Church World Service, CROP, and UNICEF.

Celebration Days annually planned by the group include World Day of Prayer, May Fellowship Day, and World Community Day.

Officers of Church Women United are Caralee Hoffmeyer, president; Connie Schwarm, secretary; Peg Hamilton, treasurer; Pat Stirling, celebrant; Mary Ann Merkel, ecumenical action; and Pat Borders, enabling services.

Key women from area churches are Lorrie Rody, First United Methodist; Ruth Leach, Congregational United Church of Christ; Charlene Ballstrere, St. Paul United Church of Christ; Betty Hinderer, Zion Lutheran; Jane Ramsey, St. Barnabas Episcopal; Joan Eisele, St. Mary Catholic; and Doris Dirham, North Lake United Methodist.

Nominating committee for the group consists of Ariene Schroen, Marg Prinzing, and Mary Ann Merkel.

OLD TIME VALUES

FOR HOME-LOVERS FROM "THE FRIENDLY ONE"

ANTIQUING KITS

New Beauty for Old Furniture

24 ONLY (Some Alkyd-base, Some Oil Base) **\$2.49** REG. \$4.95

LACQUER THINNER 96¢ REG. \$1.20 QT. SIZE 10 times faster than turpentine as a general solvent and brush cleaner.	BORDEN'S Elmer's Glue \$1.29 REG. \$1.85 16-OZ. SIZE DRIES CLEAR HOLDS FAST	PANEL MAGIC AND CABINET MAGIC \$1.79 REG. \$2.19 SPRAY ON - WIPE OFF Hides scratches and scuffs. Not a wax or polish.	DOW-CORNING BATHTUB CAULK SILICONE RUBBER \$1.59 REG. \$1.95 10-year guarantee; adheres to porcelain, ceramic, glass, etc. In white and colors.
--	--	---	---

BLACK & DECKER 1¢ SALE

3/8" DRILL
No. 7110. Reg. \$12.99

VARIABLE SPEED SABRE SAW
No. 7524. Reg. \$29.99

ONLY \$30.00 FOR BOTH!

STEPLADDER SPECIALS

4' ALUMINUM \$7.99
SAF-T-MASTER Reg. \$10.40

5' WOOD \$10.00
YOUR PICK!

1/16" SHEET "FORMICA"
STOCK SHEETS - 30"x4', 6', 8' & 10'
Many colors & patterns including wood grains

COMPARE! 59¢ ANYWHERE!
Sq. Ft.

VANITY SINK CABINET

WITH "MARBELITE" TOP & BOWL

Spanish - Oak Finish

1 - Only REG. \$74.95 **\$59.95**
20" WIDE, 19" DEEP

HAND TOOLS

13-Pc. DRILL SET... \$4.79
12 HI-SPEED STEEL DRILLS, 1/16" TO 1/4" PLUS CENTER PUNCH. Reg. \$6.49

POP RIVET TOOL.... \$3.99
REG. \$4.69

STANLEY LEVELS

WOOD DOUBLE-VIAL REG. \$4.59 **\$2.99**

18" WOOD DOUBLE VIAL Reg. \$3.95 **\$2.59**

24" ALUM. DOUBLE VIAL Reg. \$5.89 **\$3.99**

IRWIN EXPANSION BIT... \$4.99

No. 2 size 35 std. size holes to 3" Reg. \$6.59

TRUE HAMMER
STEEL-SHANK, RUBBER-GRIP
ALL-PURPOSE REG. \$8.49 **\$5.99**
13-OZ. SIZE

Save FREE-STANDING SELF-CONTAINED FIREPLACE... **\$308**
34"x21"x21 1/2" - BLACK FINISH - INCLUDING 6-FT. STACK. REG. \$413.00, 1 ONLY

PRICES IN THIS AD GOOD THRU FEB. 15

improve your home NOW

CHELSEA LUMBER CAN HELP!

You and Your SNOWMOBILE

... one of the reasons we're in business. That's why our Homeowners, Mobile Homeowners or Farmowners policies each provide automatic liability coverage for your snowmobile at no extra cost... on or off your property.

DAVE ROWE
107 1/2 S. Main
Chelsea, Mich.
Ph. 475-8065

FARM BUREAU INSURANCE GROUP

TRUCKLOAD SALE

SAVE UP TO 40%

EVERY SOFA, CHAIR AND LOVE SEAT AT DEEP PRICE CUTS... 3 DAYS ONLY!

- NEWEST STYLES! HIGHEST QUALITY!
- FASHION FABRICS IN EASY CARE HERCULON®, NYLON, LUXURY VELVETS!

FREE COFFEE and DONUTS

FREE DOOR PRIZE—BE SURE TO REGISTER

Authentic colonial styling

SAVE \$31.50

NEW COLORS! NEW FABRICS!

- Plush Velvets
- Soil resistant Herculon® Olefins
- Long-wearing Chatham Nylons

HERCULON

SPECIAL \$68

FACTORY PRICE \$99.50 SHOP NOW and SAVE!

Traditional

Early American

Spanish

SAVE \$71.00 ON EACH SOFA

3 SOFA STYLES—YOUR CHOICE \$378

Elegantly styled in Imported velvets, plush velvets and heavyweight fabrics of Chatham nylon. Reversible Style-foam cushions for double service plus expert tailoring.

Early American

Modern

Traditional

SAVE \$61.00 ON F*CH SLEEPER

SEATS 4... SLEEPS 2... ONLY FOAM MATTRESS

REG. \$319.00 SOFA SLEEPERS—YOUR CHOICE

Choice of three distinctive styles in popular upholstery fabrics and soft Stylefoam cushioning. Each tailored sleeper is comfort designed with hardwood frame, no-sag springs and TV headrest.

\$258

Early American

Traditional

Contemporary

Spanish

SAVE \$71.00 ON EACH 2-PC. SET

REG. \$449.00

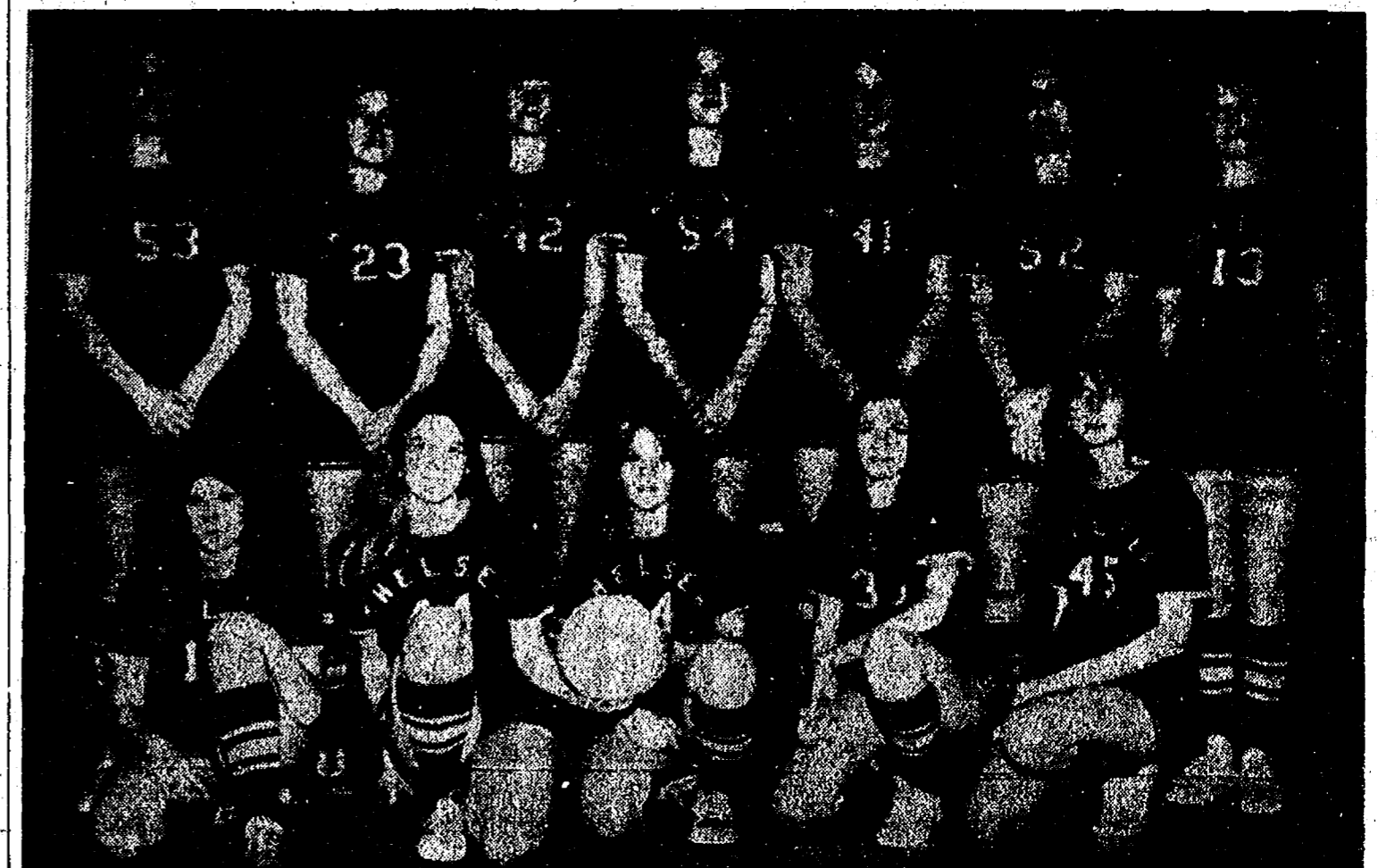
2-PC. LIVING ROOMS—YOUR CHOICE

Complete your living room with luxurious styled matching sofa and chair sets. Choose from popular Chatham nylon fabrics, colors in 4 distinctive styles. Soft Stylefoam cushioning with practical reversible cushions.

\$378



CHELSEA'S NEWEST SPORT, girls South-eastern Conference volleyball, will conclude its short league season tomorrow with a contest against Brighton, followed by the League meet at Lincoln, Feb. 22. Varsity team members pictured above are, in front, Sue Schulze, Karen Ottoman, Lola Augustine, Marie Fahrner, and Denise Kilpatrick. In back, from left, are Coach Cheryl Turner, Sue Skittenhelm, Brenda Augustine, Jane Knott, Karen Tobin, and Carol Schirrmacher.



JUNIOR VARSITY VOLLEYBALL SQUAD, Dawn Bucholz. In back, from left, are Cindy Figg, Chelsea's first, includes, in front, Edie Houk, Sue Lesley Clark, Nancy Knott, Sharon Donovan, Dawn Heydlauf, Kathy Schmitke, Colleen Collins, and Kilpatrick, B. J. Parks, and Betsy Schaeffer.

Girls Volleyball Team Downs Novi For First Victory

With all due consideration to the fact that there is not much, statistically speaking, to say about volleyball, let it be reported simply that Chelsea's varsity girls volleyball team downed Novi in two games Friday, both by a score of 15-7, and the junior varsity failed in its third attempt at victory, also in two games, 8-15 and 13-15.

Varsity's victory was its first in three meetings.

Regular season will end for Chelsea volleyballers tomorrow (Friday) when they travel to Brighton. League meet is scheduled for Feb. 22 at Lincoln.

Beach School Cage Intramurals Begin

Preliminary rounds of tournament action in both boys' and girls' intramural basketball leagues at Beach Middle school were scheduled to begin this Wednesday, with semi-final and final action scheduled for Feb. 12 and 19.

Last week's play, which was to begin preliminary eliminations, was canceled because of roof problems at the middle school. Intramural director Pat Clarke has announced the scoring leaders for the regular season for both leagues. They are as follows:

Jeff Rabbitt*	18	6.0
Bob McAllister	18	4.5
Joe Vervey	18	4.5
Jimmy Brown	18	4.5

*Played only three games.

GIRLS LEAGUE SCORING LEADERS		
	Pts.	Avg.
Cindy Welshans	28	7.0
Veronica Satterthwaite	26	6.5
Cindy Burns	20	5.0
Caroline Enderle	17	3.8
Kathy Voita	15	3.8
Nanette Push	15	3.8
Marleyn Seitz	14	3.5
Candy Schirrmacher	14	3.5
Laurie Miles	13	3.3
Sandy Shadoan	11	2.8

The National Cemeteries Act of 1973 provided for the transfer of responsibility of 82 national cemeteries from the Department of the Army to the Veterans Administration. These joined 21 VA cemeteries to form the National Cemetery System.

BOYS LEAGUE SCORING LEADERS		
	Pts.	Avg.
Brad Knickerbocker*	33	11.0
Chuck Young	41	10.3
John Dunn	23	7.7
Brian Burg	23	7.7
Dan Alber	22	7.3
Pat Murphy	25	6.3

President Ford has announced the nomination of Frank G. Zarb, now an associate director of the Office of Management and Budget, to head the Federal Energy Administration.

DUNBAR'S DEXTER LOCKER

PAUL DUNBAR, OWNER
8083 MAIN ST., DEXTER PHONE 426-8466

FILL YOUR FREEZER NOW While Prices Are Lowest!

BEEF SIDES

79^c lb.

— COMPLETE —

Includes cutting, wrapping, and sharp freezing.

We Also Sell in Small Quantities

Discount to Civic Groups - We Accept Federal Food Stamps

CUSTOM SLAUGHTERING & PROCESSING

Go Gambles

110 N. MAIN CHELSEA 31 BIG HOURS
Thurs-Sat, 8:30 a.m. to 5:30 p.m.
Friday, 8:30 a.m. to 9:00 p.m.

OF MICHIGAN TAX SALE

IN THE CIRCUIT COURT FOR THE COUNTY OF WASHTENAW... ANN ARBOR TOWNSHIP... AUGUSTA TOWNSHIP...

On reading and filing the complaint of the State Treasurer of the State of Michigan... ANN ARBOR TOWNSHIP... AUGUSTA TOWNSHIP...

IN THE CIRCUIT COURT FOR THE COUNTY OF WASHTENAW... ANN ARBOR TOWNSHIP... AUGUSTA TOWNSHIP...

IN THE CIRCUIT COURT FOR THE COUNTY OF WASHTENAW... ANN ARBOR TOWNSHIP... AUGUSTA TOWNSHIP...

IN THE CIRCUIT COURT FOR THE COUNTY OF WASHTENAW... ANN ARBOR TOWNSHIP... AUGUSTA TOWNSHIP...

IN THE CIRCUIT COURT FOR THE COUNTY OF WASHTENAW... ANN ARBOR TOWNSHIP... AUGUSTA TOWNSHIP...

IN THE CIRCUIT COURT FOR THE COUNTY OF WASHTENAW... ANN ARBOR TOWNSHIP... AUGUSTA TOWNSHIP...

SCHEDULE "A" TAXES OF 1972 AND PRIOR YEARS

That within the time provided by law this court make a final judgment in and give effect to the provisions of each parcel of said lands for the payment of the several amounts of taxes, interest, collection expenses as therein set forth and extended in said schedule against the several parcels of land therein contained;

That said judgment provide that in default of the payment of said taxes and interest, the State of Michigan shall have the right to sell the lands in said schedule, the proceeds of such sale to be applied to the payment of said taxes and interest, and the balance, if any, to be paid to the owner of the lands.

That your plaintiff may have the premises and further relief in the premises which this court may deem just and equitable.

And your plaintiff will ever pray, etc.

ALLISON GREEN, State Treasurer of the State of Michigan, and in behalf of said State...

SCHEDULE "A" TAXES OF 1972 AND PRIOR YEARS

That within the time provided by law this court make a final judgment in and give effect to the provisions of each parcel of said lands for the payment of the several amounts of taxes, interest, collection expenses as therein set forth and extended in said schedule against the several parcels of land therein contained;

That said judgment provide that in default of the payment of said taxes and interest, the State of Michigan shall have the right to sell the lands in said schedule, the proceeds of such sale to be applied to the payment of said taxes and interest, and the balance, if any, to be paid to the owner of the lands.

That your plaintiff may have the premises and further relief in the premises which this court may deem just and equitable.

And your plaintiff will ever pray, etc.

ALLISON GREEN, State Treasurer of the State of Michigan, and in behalf of said State...

SCHEDULE "A" TAXES OF 1972 AND PRIOR YEARS

That within the time provided by law this court make a final judgment in and give effect to the provisions of each parcel of said lands for the payment of the several amounts of taxes, interest, collection expenses as therein set forth and extended in said schedule against the several parcels of land therein contained;

That said judgment provide that in default of the payment of said taxes and interest, the State of Michigan shall have the right to sell the lands in said schedule, the proceeds of such sale to be applied to the payment of said taxes and interest, and the balance, if any, to be paid to the owner of the lands.

That your plaintiff may have the premises and further relief in the premises which this court may deem just and equitable.

And your plaintiff will ever pray, etc.

ALLISON GREEN, State Treasurer of the State of Michigan, and in behalf of said State...

SCHEDULE "A" TAXES OF 1972 AND PRIOR YEARS

That within the time provided by law this court make a final judgment in and give effect to the provisions of each parcel of said lands for the payment of the several amounts of taxes, interest, collection expenses as therein set forth and extended in said schedule against the several parcels of land therein contained;

That said judgment provide that in default of the payment of said taxes and interest, the State of Michigan shall have the right to sell the lands in said schedule, the proceeds of such sale to be applied to the payment of said taxes and interest, and the balance, if any, to be paid to the owner of the lands.

That your plaintiff may have the premises and further relief in the premises which this court may deem just and equitable.

And your plaintiff will ever pray, etc.

ALLISON GREEN, State Treasurer of the State of Michigan, and in behalf of said State...

SCHEDULE "A" TAXES OF 1972 AND PRIOR YEARS

That within the time provided by law this court make a final judgment in and give effect to the provisions of each parcel of said lands for the payment of the several amounts of taxes, interest, collection expenses as therein set forth and extended in said schedule against the several parcels of land therein contained;

That said judgment provide that in default of the payment of said taxes and interest, the State of Michigan shall have the right to sell the lands in said schedule, the proceeds of such sale to be applied to the payment of said taxes and interest, and the balance, if any, to be paid to the owner of the lands.

That your plaintiff may have the premises and further relief in the premises which this court may deem just and equitable.

And your plaintiff will ever pray, etc.

ALLISON GREEN, State Treasurer of the State of Michigan, and in behalf of said State...

SCHEDULE "A" TAXES OF 1972 AND PRIOR YEARS

That within the time provided by law this court make a final judgment in and give effect to the provisions of each parcel of said lands for the payment of the several amounts of taxes, interest, collection expenses as therein set forth and extended in said schedule against the several parcels of land therein contained;

That said judgment provide that in default of the payment of said taxes and interest, the State of Michigan shall have the right to sell the lands in said schedule, the proceeds of such sale to be applied to the payment of said taxes and interest, and the balance, if any, to be paid to the owner of the lands.

That your plaintiff may have the premises and further relief in the premises which this court may deem just and equitable.

And your plaintiff will ever pray, etc.

ALLISON GREEN, State Treasurer of the State of Michigan, and in behalf of said State...

SCHEDULE "A" TAXES OF 1972 AND PRIOR YEARS

That within the time provided by law this court make a final judgment in and give effect to the provisions of each parcel of said lands for the payment of the several amounts of taxes, interest, collection expenses as therein set forth and extended in said schedule against the several parcels of land therein contained;

That said judgment provide that in default of the payment of said taxes and interest, the State of Michigan shall have the right to sell the lands in said schedule, the proceeds of such sale to be applied to the payment of said taxes and interest, and the balance, if any, to be paid to the owner of the lands.

That your plaintiff may have the premises and further relief in the premises which this court may deem just and equitable.

And your plaintiff will ever pray, etc.

ALLISON GREEN, State Treasurer of the State of Michigan, and in behalf of said State...

NORTHFIELD TOWNSHIP
Town 1 South, Range 7 East
Town 1 North, Range 7 East
Town 1 South, Range 8 East

PITTSFIELD TOWNSHIP
Town 3 South, Range 7 East
Town 3 North, Range 7 East
Town 3 South, Range 8 East

PITTSFIELD TOWNSHIP
Town 3 South, Range 7 East
Town 3 North, Range 7 East
Town 3 South, Range 8 East

SALEM TOWNSHIP
Town 1 South, Range 7 East
Town 1 North, Range 7 East
Town 1 South, Range 8 East

NORTHFIELD TOWNSHIP
Town 1 South, Range 7 East
Town 1 North, Range 7 East
Town 1 South, Range 8 East

PITTSFIELD TOWNSHIP
Town 3 South, Range 7 East
Town 3 North, Range 7 East
Town 3 South, Range 8 East

PITTSFIELD TOWNSHIP
Town 3 South, Range 7 East
Town 3 North, Range 7 East
Town 3 South, Range 8 East

SALEM TOWNSHIP
Town 1 South, Range 7 East
Town 1 North, Range 7 East
Town 1 South, Range 8 East

Table with multiple columns listing property details, including Township (e.g., SHARON TOWNSHIP, SYLVAN TOWNSHIP), Range (e.g., Range 3 East), Section (e.g., Sec 1), and various lot numbers and descriptions of land parcels.

CITY OF ANN ARBOR "ORIGINAL PLAT" Lot 26 exc NW 1/4 of NW 1/4 sec 23, T2S, R6E, com...

CITY OF ANN ARBOR "MAP OF A TENROOKS ADDITION" Lot 26 exc NW 1/4 of NW 1/4 sec 23, T2S, R6E, com...

CITY OF ANN ARBOR "WILLIAM S. MAYNARD ADDITION" Lot 26 exc NW 1/4 of NW 1/4 sec 23, T2S, R6E, com...

CITY OF YPSILANTI - WEST "WILLIAM S. MAYNARD ADDITION" Lot 26 exc NW 1/4 of NW 1/4 sec 23, T2S, R6E, com...

CITY OF YPSILANTI - WEST "NORMAL HEIGHTS SUBDIVISION" Lot 26 exc NW 1/4 of NW 1/4 sec 23, T2S, R6E, com...



CHELSEA'S JV TOURNEY featured fine performances by these three Junior Bulldog grapplers, Mike Young, Bob Swanberg, and James Bollinger. Young, who finished in second place at 122 pounds, wrestled a pair of close matches before losing in the finals. Swanberg, Chelsea's only champion in the tournament, wrestled at 135 and scored four fall victories, each in less than three minutes. Bollinger, at 188 pounds, finished fourth. Also finishing fourth was Len Hafner at 141 pounds, who was not present for the photo.



CRIBBAGE WINNERS: After four Mondays of grueling competition at St. Mary's school, four players were awarded trophies following the finals this week in Chelsea Jaycees' cribbage tournament. Above, from left, are Jerry Kraus, Chelsea Jaycee co-chairman; Art Jarve, first place; Evelyn Kaiser, second place; Richard Glasson, third place; and Gary Kadke, fourth place.

A. Jarve Wins Cribbage Tournney

Art Jarve made his move when he counted and finished first in Chelsea Jaycees' annual cribbage tournament Monday night, after barely squeaking into the ranks of the top eight players last week. Also in the top four were Evelyn Kaiser, second; Richard Glasson, third; and Gary Kadke, fourth. Kadke had led the 26 entries in the tournament for three successive weeks of play. Jaycee members expressed their thanks to Mr. Phillip Dupuis of St. Mary's for allowing the group to use the school facility, and also to all participants.

Jill Geddes Completes Practical Nurse Course

Two local residents were among 58 students who graduated Sunday, Feb. 2 from the 52nd one-year program in Practical Nurse Education conducted by the Ann Arbor Public School Practical Nurse Education Program. One of the local students, Jill N. Geddes, of 204 Park St., was chosen to give the student response to the commencement speaker, Norma E. Marshall, R.N. Assistant Dean and Professor of Nursing at the University of Michigan. Also graduating was Loraine L. Harwick, 1124 Sarah, Pinckney. Telephone Your Club News To 475-1371.

NOTICE

DEXTER TOWNSHIP TAXPAYERS

I will be at Dexter Township Hall, 6880 Dexter-Pinckney Rd., Dexter, to collect Dexter Township taxes on the following days: every Monday evening, 5 to 7 p.m.; Wednesday afternoons, 12 noon to 5 p.m., and Friday, 9 a.m. to 5 p.m. through February 28.

Those who wish may send check or money order. Receipts will be returned by mail. Three percent collection fee is assessed after Feb. 15.

All dog licenses must be paid to the Dexter Township treasurer before March 1, 1975 to avoid penalty.

ALL DOG LICENSES \$4.00

Rabies vaccination papers must be presented in order to obtain dog licenses.

LORINDA JEDELE
DEXTER TOWNSHIP TREASURER

SCHOOL LUNCH MENU

Week of Feb. 10-14

Monday—Chicken and noodle casserole, buttered peas, bread and butter, dessert, and milk.

Tuesday—Hot dog with coney sauce on buns, baked beans, fruit, cake, and milk.

Wednesday—Submarines with sauce, soup of the day with crackers, Jell-O with fruit, and milk.

Thursday—Sloppy joes on buns, slice cheese, French fries, Harvard beets, dessert, and milk.

Friday—No school.

EVERYWHERE IN MICHIGAN

Real Estate One
ASSOCIATE

WHY LIST WITH REAL ESTATE ONE?

OUR HOME SERVICE CONTRACT attracts buyers for you quicker and at better prices, in areas where it is available.

Phone 475-8693

SEC Cage Schedule

Week of Feb. 7-13

Friday, Feb. 7—Brighton at Chelsea, Dexter at Lincoln, South Lyon at Milan, Saline at Novi.

Tuesday, Feb. 11—Novi at Brighton, Chelsea at South Lyon, Dexter at Saline, Milan at Lincoln.

FOR PROFIT

FEED

Feed Formulas Tested, Proved To Get Results

Easy-to-proteins, vitamins and minerals in proper balance, scientifically blended, make our feeds real profit producers for you.

Farmers' Supply Co.

Phone GR 5-5511

RICK'S MARKET

Just North of Chelsea on M-52 "The Friendly Store" Phone 475-2898

—SPECIAL—

LARGE 10-OZ. PKG. **FRITO-LAY POTATO CHIPS . . .** Reg. 89c **69c**

MORTON **WATER SOFTENER PELLETS . . .** 80-Lb. Bag **\$2.79**

PURINA DOG CHOW 50-Lb. Bag **\$10.49**

This Week's Special from Hans Sausage House:

SMOKED GERMAN KNOCKWURST

Fine Cut **99c lb.** Course Cut **\$1.39 lb.**

CHEESE SPECIAL FOR THIS WEEK:

FLORA DANISH BLUE CHEESE . lb. \$2.29

Come in and see and taste for yourself!

ALWAYS SPECIAL AT RICK'S - Made Here Daily:

- ★ DONUTS, CINNAMON ROLLS, LONG JOHNS, BISMARCS and a variety of others... m-m good!
- ★ FRESH SANDWICHES, warmed for you in a minute

And . . . OUR CASE LOT OFFER

Only 5% over our cost
(Approx. 1/2 down with order, balance when order is picked up)

SHOP WITH US AND SAVE!

Magnavox

ANNUAL SALE

DOUBLE STAR SAVINGS

SAVE \$50⁹⁵

Model 4756—Mediterranean styling

Model 4754—Early American

25" diagonal Videomatic Color Consoles

These deluxe consoles offer you outstanding furniture styling plus advanced features: 100% solid-state, Videomatic One-Button Tuning, plus a Super-Bright Matrix Picture Tube. In addition to the models shown, French and Italian Provincial styles are available.

CHOOSE FROM FIVE STYLES NOW

\$599

Magnavox Solid-State Color TV Extra Tested for Extra Reliability

HEYDLAUFF'S

113 North Main St., Chelsea Phone 475-1221



Polly's MASTER MARKETS

1101 M52
CHELSEA

201 PARK
VANDERCOOK LK.

1621
Spring Arbor Rd.
JACKSON

960
N. WEST AVE.
JACKSON

115
W. PROSPECT ST.
JACKSON

1809
E. MICH. AVE.
JACKSON

get to know us...

WE CAN HELP YOU SAVE ON YOUR FOOD BILL!

OPEN . 8 A.M. TO 10 P.M.
DAILY:

OPEN 9 A.M. TO 6 P.M.
SUNDAY:

- ★ **QUALITY PRODUCE**
- ★ **QUALITY MEAT**
- ★ **COLD BEER & WINE**
- ★ **LOTTERY TICKETS**
- ★ **SIDES OF BEEF**
- ★ **FRUIT BASKETS**
- ★ **DRY CLEANING**
- ★ **PHOTO PROCESSING**
- ★ **VARIETY AT LOW PRICES**

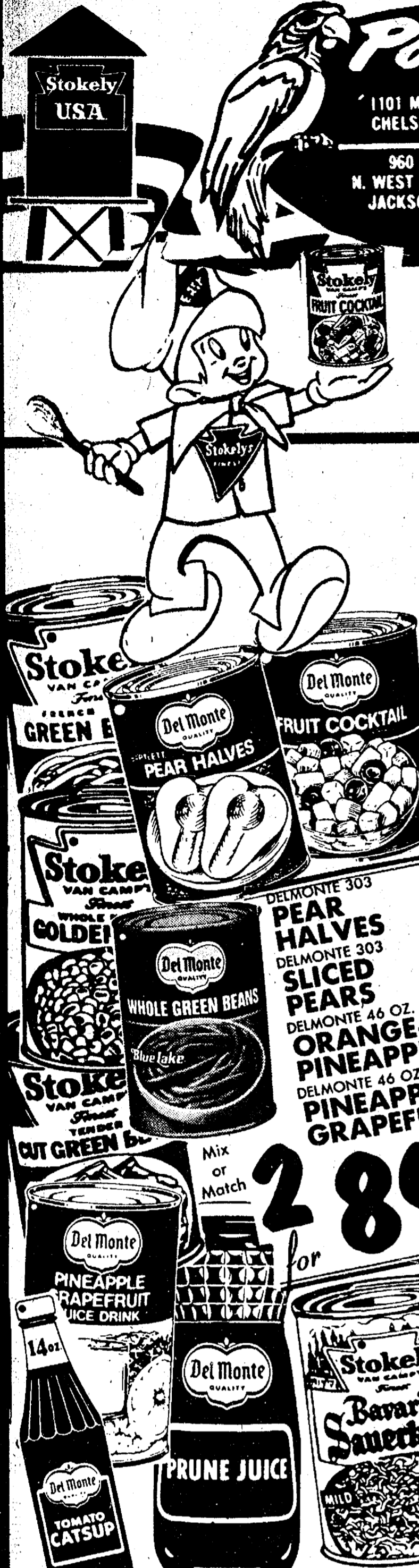
Polly's MASTER MARKETS

1101 M52 CHELSEA	201 PARK VANDERCOOK LK.	1621 Spring Arbor Rd. JACKSON
960 M. WEST AVE. JACKSON	115 W. PROSPECT ST. JACKSON	1809 E. MICH. AVE. JACKSON

BEFORE INFLATION PRICED...

DOLLAR DAYS

All prices effective thru Sunday, February 9, 1975
Food Stamps redeemable at all Polly's



Mix
or
Match!

- | | |
|-------------------------------------|----------------------------------|
| STOKELY WHOLE GREEN BEANS | STOKELY FRENCH STYLE GREEN BEANS |
| STOKELY CREAM CORN | STOKELY WHOLE KERNEL CORN |
| STOKELY VACUUM PAK W.K. GOLDEN CORN | STOKELY BAVARIAN KRAUT |
| DEL MONTE 14 OZ. CATSUP | DEL MONTE CUT GREEN BEANS |
| DEL MONTE GREEN ITALIAN BEANS | DEL MONTE ZUCCHINI SQUASH |

3 303-SIZE CANS
for **\$1**

CASE \$8.00
1/2-CASE \$4.00

Mix or Match

2 89¢

- DEL MONTE 303 PEAR HALVES
- DEL MONTE 303 SLICED PEARS
- DEL MONTE 46 OZ. ORANGE-PINEAPPLE
- DEL MONTE 46 OZ. PINEAPPLE-GRAPEFRUIT
- STOKELY WHOLE GREEN BEANS
- STOKELY DELUXE PLUMS
- STOKELY CUT WAX BEANS
- DEL MONTE 303 FRUIT COCKTAIL

Mix or Match

STOKELY DARK RED KIDNEY BEANS

STOKELY SLICED BEETS

STOKELY GOLDEN SUCCOTASH

STOKELY SMALL WHOLE WHITE POTATOES

4 303-SIZE CANS
for **\$1**

CASE \$6.00
1/2-CASE \$3.00

STOKELY TOMATO JUICE 2 for \$1

STOKELY TOMATO SAUCE 6 for \$1

STOKELY CUT BEETS 5 for \$1

STOKELY DELUXE PLUMS 2 for 79¢

STOKELY CUT WAX BEANS 3 for 89¢

DEL MONTE 303 FRUIT COCKTAIL 2 for 79¢

Mix or Match

DEL MONTE PINEAPPLE-RAPEFRUIT JUICE DRINK

DEL MONTE PRUNE JUICE

STOKELY BAVARIAN SAUERKRAUT

BORDEN'S ICE CREAM

SAVE 30 W/IN-STORE COUPON

BORDEN'S ELSIE ICE CREAM 1/2-GAL.

89¢

DON'T SETTLE FOR LESS!

SAVE 20 W/IN-STORE COUPON

SEALTEST COTTAGE CHEESE 12-OZ.

39¢

DON'T SETTLE FOR LESS!

SAVE UP TO \$1.00 W/IN-STORE COUPON

RETURNABLE 8-PAK PEPSI 16-OZ.

\$1.29 plus deposit

DIET PEPSI \$1.23 W/COUPON

SAVE UP TO \$6.61

WITH IN-STORE COUPONS, PLUS COUPONS IN THIS AD

BUY 2 SAVE \$1.00	RETURNABLE 8-PAK PEPSI	16-OZ.	\$1.29
BUY 2 SAVE \$1.00	GERBYS FANCY PANTS	ALL SIZES	99¢
BUY 2 SAVE .40¢	SEALTEST COTTAGE CHEESE	12-OZ.	39¢
BUY 2 SAVE \$2.00	PURINA CHUCK WAGON	25-LB.	\$4.99
BUY 6 SAVE 48¢	DIXIE HOME POT PIES	8-OZ.	6 for \$1
BUY 5 SAVE 45¢	DONALD DUCK ORANGE JUICE	6-OZ.	5 for \$1
BUY 1 SAVE	BORDEN'S ELSIE ICE CREAM	1/2-GAL.	89¢
BUY 6 SAVE 68¢	POLLY'S WHITE BREAD	20-OZ.	3 for 99¢
BUY 1 SAVE 24¢	COLGATE TOOTHPASTE	7-OZ.	75¢
BUY 2 SAVE \$1.16	LOTIONS OR TUBE HEAD & SHOULDERS		\$1.69
BUY 1 SAVE 20¢	FARMER PEETS LUNCH MEAT	1-LB.	\$1.09
BUY 1 SAVE 20¢	FARMER PEETS HOT DOGS	1-LB.	95¢
BUY 1 SAVE 10¢	ECKRICH LUNCH MEAT	1/2-LB.	10¢ OFF
BUY 1 SAVE 12¢	HERBAL & WILD ROSE RE-NUZIT AIR FRESHENERS	7-OZ.	55¢
BUY 3 SAVE 18¢	CARESS BAR SOAP	REG.	3 for 87¢

PILLSBURY BUTTERMILK BISCUITS

8-OZ. PKGS.

7 for \$1

SAVE UP TO 45¢ W/IN-STORE COUPON

DONALD DUCK ORANGE JUICE 6-OZ. CANS

5 for \$1

SAVE UP TO 48¢ W/IN-STORE COUPON

DIXIE HOME POT PIES

Turkey & Chicken 8-OZ.

6 for \$1

BUY 5 SAVE 25¢

AJAX CLEANSER

5 14-OZ. PKGS.

5 for \$1

Before Inflation Prices

- MORTON LITE SALT 11-OZ. 5 for \$1
- FRITO-LAY POTATO CHIPS 10-OZ. 69¢
- CHEETOS CHEESE PUFFS 10-OZ. 49¢
- DEL MONTE PRUNE JUICE 32-OZ. 59¢
- STOKELY CUT SPEARS ASPARAGUS 303 59¢

mix or match!

FOULDS 7-OZ. PKGS.

5 for \$1

- ELBO MACARONI
- THIN SPAGHETTI
- SEA SHELLS

SAVE 68¢ W/IN-STORE COUPONS

POLLY'S QUALITY WHITE BREAD

3 20-OZ. LOAVES

99¢

DON'T SETTLE FOR LESS!

SAVE UP TO \$1.16 W/IN-STORE COUPON

HEAD & SHOULDERS

7-OZ. TUBE or 11-OZ. LOTION

\$1.69

DON'T SETTLE FOR LESS!

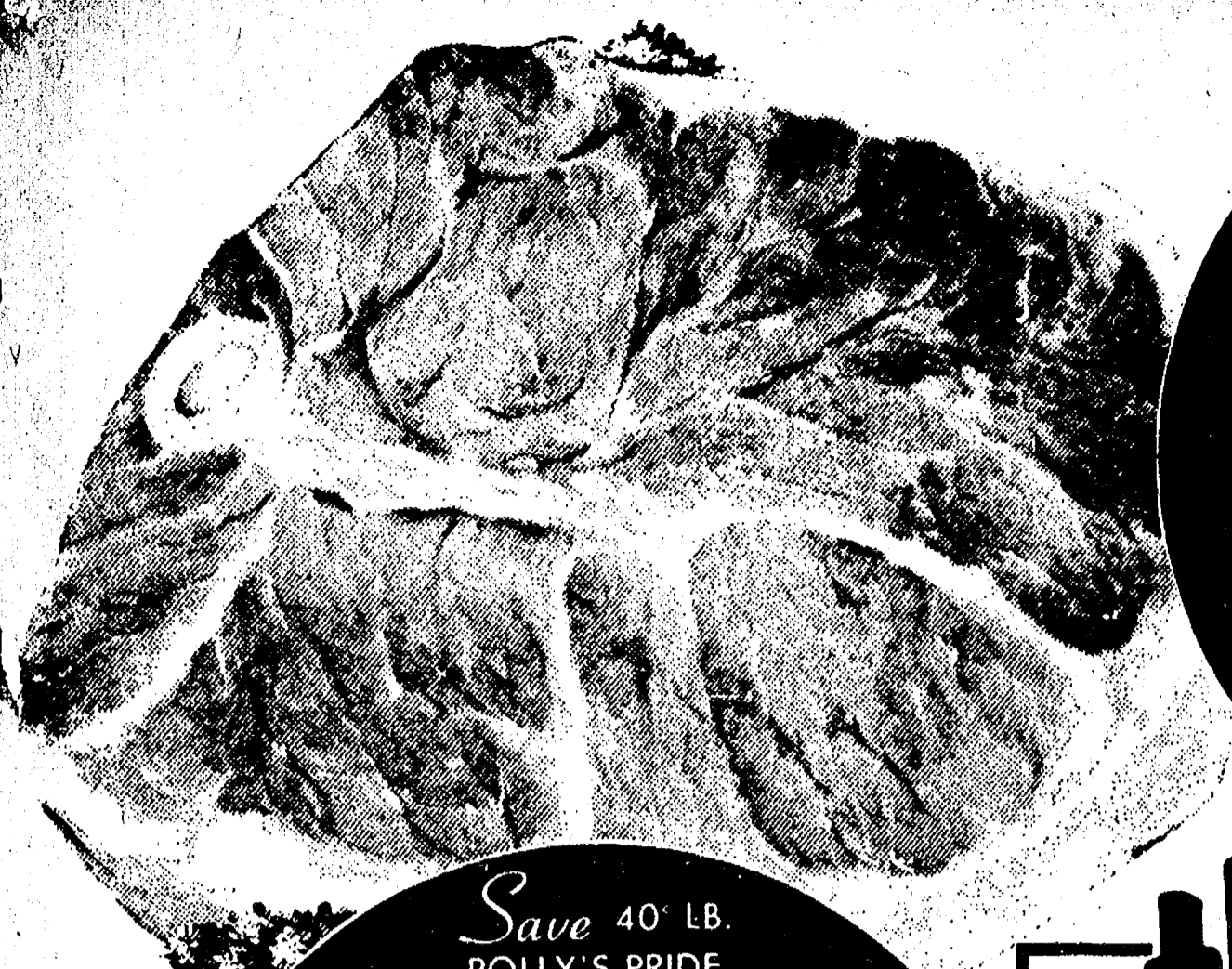
SAVE 34¢ W/IN-STORE COUPON

COLGATE TOOTHPASTE 7-OZ.

75¢

DON'T SETTLE FOR LESS!

- Health & Beauty Aids
- SCENTED OR UNSCENTED SURE DEODORANT 14-OZ. \$1.79
- NEW! WIPE AND DIPES 50-Ct. 77¢
- BAYER ASPIRIN 100's 88¢
- 20' OFF 12-OZ. EARTH BORN SHAMPOO \$1.19
- J.B.J. BABY POWDER 24-OZ. \$1.59
- VASELINE REG. & HERBAL INTENSIVE CARE LOTION 10-OZ. 99¢
- VASELINE INTENSIVE CARE BATH BEADS 15-OZ. \$1.19



LEAN TENDER
PORK CHOPS
CENTER-CUT
99¢ LB.
LOIN-CUT
\$1.09 LB.

OPEN
Daily 8 a.m.-10 p.m.
Sunday 9 a.m.-6 p.m.



Save 40' LB.
POLLY'S PRIDE
ROUND STEAK
\$1.09 LB.

the LOWEST
meat prices in town!

Save 30' LB. LOIN-END
PORK ROAST
89¢ LB.

1 POLLY'S PRIDE
Lean Tender
BEEF

Save 30' LB. POLLY'S PRIDE
RUMP ROAST
\$1.29 LB.
SAVE 20' LB. Fresh **BEEF LIVER** **59¢** LB.
SAVE 20' Eckrich **BEEF FRANKS** **99¢** LB.

SAVE 11' LB. CORALS PARTS MISSING
TURKEYS
38¢ LB.
DON'T SETTLE FOR LESS!

SAVE 30' LB. Lean Tender **COUNTRY RIBS** **79¢** LB.
SAVE 30' LB. Lean Tender **CHINESE RIBS** **89¢** LB.
SAVE 30' LB. Whole **PORK LOINS** CUT FREE **89¢** LB.
SAVE 30' LB. Whole **PORK BUTTS** CUT FREE **89¢** LB.

SAVE 20' W/COUPON FARMER PEETS
LUNCH MEAT 1-LB. **\$1.09**
SAVE 20' FARMER PEETS
HOT or MILD SAUSAGE 1-LB. **79¢**
SAVE 10' W/COUPON ECKRICH
LUNCH MEAT 1/2-LB. **10¢ OFF**
SAVE 30' ARMOUR
PAN-SIZE BACON 12-OZ. **99¢**
SAVE 20' W/COUPON FARMER PEETS
HOT DOGS 1-LB. **95¢**
SAVE 30' FARMER PEETS
RE-PEETER BACON 1-LB. **\$1.29**
SAVE 50' ARMOUR
CANNED PICNICS 3-LB. **\$2.99**
SAVE 50' FARMLAND
CANNED HAM 5-LB. **\$6.99**

QUICK 'N EASY Frozen Foods

- SAVE 20' ORE-IDA BACON or CHEESE **TATER TOTS** 32-OZ. **69¢**
- SAVE 30' BOOTH **FISH CAKES** 24-OZ. **89¢**
- SAVE 26' BOOTH **FISH STICKS** 16-OZ. **89¢**
- SAVE 50' HARRIS DELUXE **CHERRY PIE** 10" **\$1.49**
- SAVE 20' HARRIS DELUXE **RHUBARB PIE** 10" **\$1.49**
- SAVE 16' GREEN GIANT SOUR CREAM or CHEESE **STUFFED POTATOES** 12-OZ. **39¢**
- SAVE 16' BIRDSEYE FRENCH **BEANS W/ALMOND** 9-OZ. **39¢**
- SAVE 16' BIRDSEYE FRENCH **BEANS W/MUSHROOMS** 10-OZ. **39¢**
- SAVE 50' ON-COR **LASAGNA** 32-OZ. **\$1.29**
- SAVE 40' ON-COR **RAVIOLI W/MEATBALLS** 32-OZ. **\$1.29**
- SAVE 16' DOWNY FLAKE BUTTERMILK or BLUEBERRY **WAFFLES** 17-OZ. **49¢**

SAVE 10' BORDENS
FUDGE BARS 12-PK. **69¢**

30¢ Off PIZZAS
17½-OZ. **SAUSAGE & MUSHROOM** **\$1.29**
17½-OZ. **SAUSAGE & PEPPERONI**

FRESH Baked Goods!

SAVE 40' FRESH BAKED 8 IN. **RHUBARB PIE** **99¢**
SAVE 20' FRESH BAKED 8 IN. **PECAN PIE** **\$1.39**
SAVE 10' FRESH **DANISH ROLLS** 4 for **59¢**



No Matter How You Peel It
FRESH, QUALITY FRUIT & VEGETABLES AT POLLY'S LOW PRICES "ADD UP" TO THE BEST BUYS IN TOWN... THAT'S A PROMISE!

SUNKIST NAVAL
ORANGES
88-SIZE
10 for 79¢

VINE RIPE
TOMATOES
4 49¢ LB.

SUNKIST
LEMONS
95-SIZE
4 for 39¢

Garden Fresh!
GOLDEN DELICIOUS **APPLES** 29¢ LB.
GARDEN FRESH **BROCCOLI** 49¢ EA.
FRESH & FIRM **BRUSSEL SPROUTS** 2 for 35¢
TANGY FRESH **GREEN ONIONS** 2 for 35¢
CELLO-PAK RED **RADISHES**

RED DELICIOUS **APPLES** 6-LB. BAG **65¢**
IDAHO **POTATOES** 10-LB. BAG **99¢**

**Thank
You**

FOR SHOPPING AT...



**WHERE WE ARE
HAPPY TO.....**

save YOU MONEY!