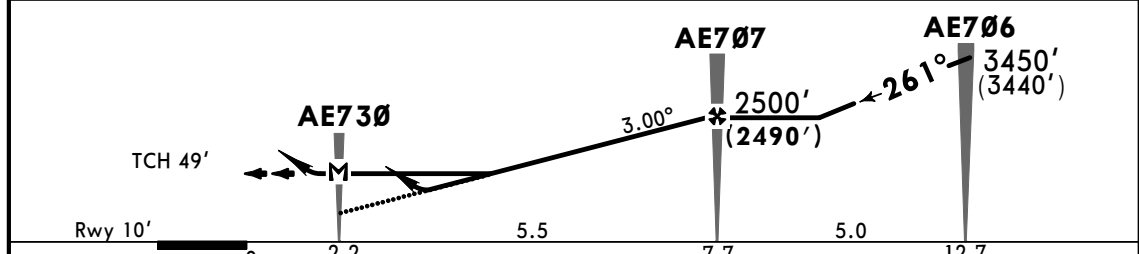
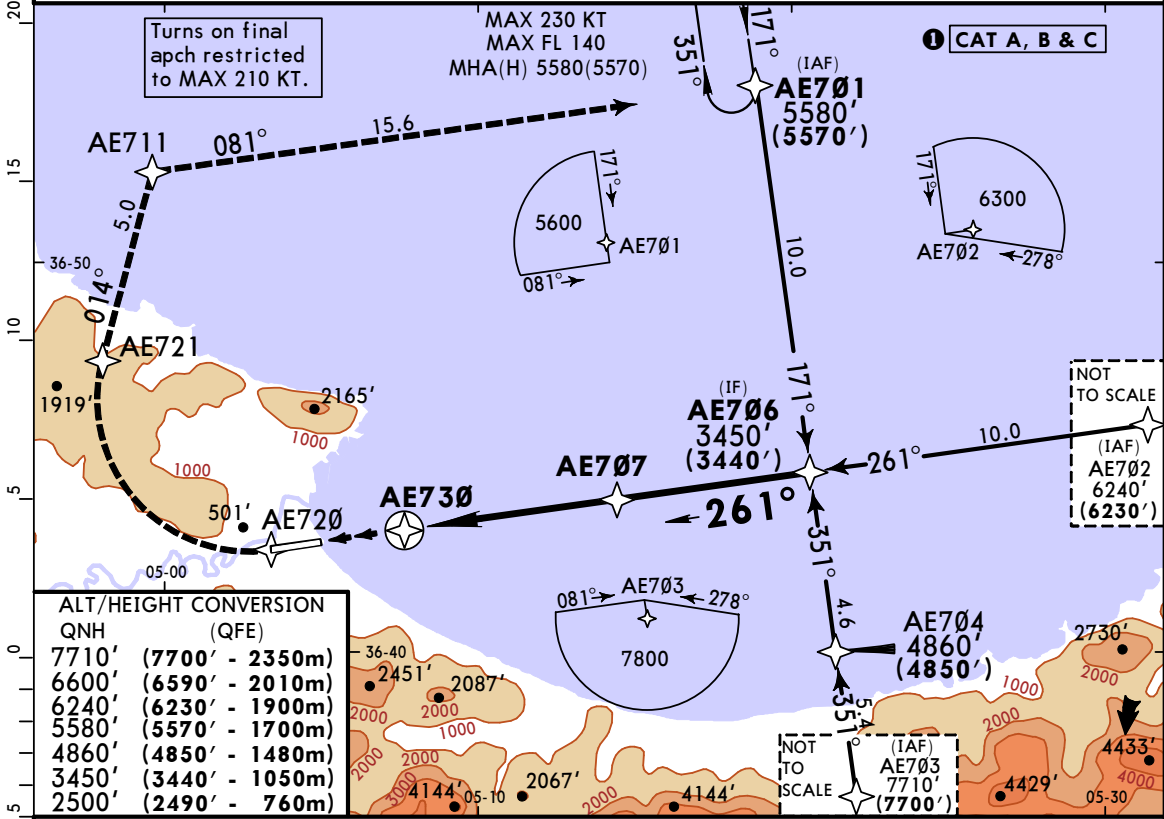


BEJAIA Tower					
118.9					
RNAV	Final Apch Crs 261°	Minimum Alt AE707 2500'(2490')	LNAV/VNAV DA(H) Refer to Minimums	Apt Elev 20' Rwy 10'	TAA 25 NM IF
MISSED APCH: Climb to 5580'(5570'). STRAIGHT AHEAD to AE720, turn RIGHT to AE721, then turn RIGHT to AE711, then turn RIGHT direct to AE701 and hold.					
Alt Set: hPa		QNH on req (QFE)		Trans level: By ATC	
Trans alt: 6600'(6590')					
RNP Apch 1. RF required. 2. Baro - VNAV not authorized below -10°C. For temperatures above 50°C					
Descent Angle exceeds 3.5°.					



Gnd speed-Kts	70	90	100	120	140	160	PAPI-L	AE720
Descent Angle 3.00°	372	478	531	637	743	849		
LNAV/VNAV: MAP at DA								
LNAV: MAP at AE730								

PANS OPS	STRAIGHT-IN LANDING RWY 26				CIRCLE-TO-LAND	
	LNAV/VNAV		LNAV		Prohibited South of airport	
	MACG mim 5.0%		MACG mim 2.5%			
	DA(H) A: 1120'(1110') BC: 1140'(1130')		DA(H) 1200'(1190')		MDA(H) 1020'(1010')	
	MDA(H) 1280'(1270')		MDA(H) 1280'(1270')		MDA(H)	
A	3200m	3200m	3200m	5000m	100	1970'(1950') 5000m
B	3200m	3200m	3200m	5000m	135	1970'(1950') 5000m
C	4800m	4800m	4800m	5000m	180	2610'(2590') 5000m
D	NOT AUTHORIZED				D	NOT AUTHORIZED