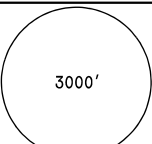
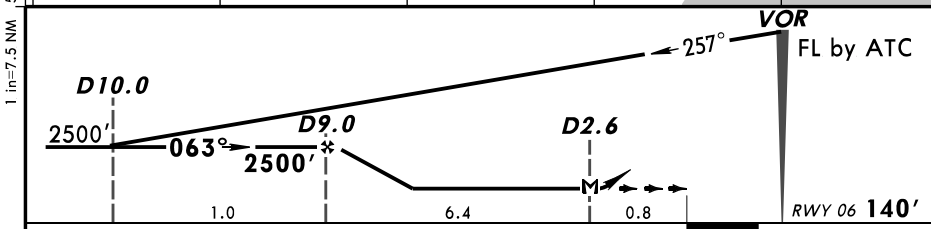
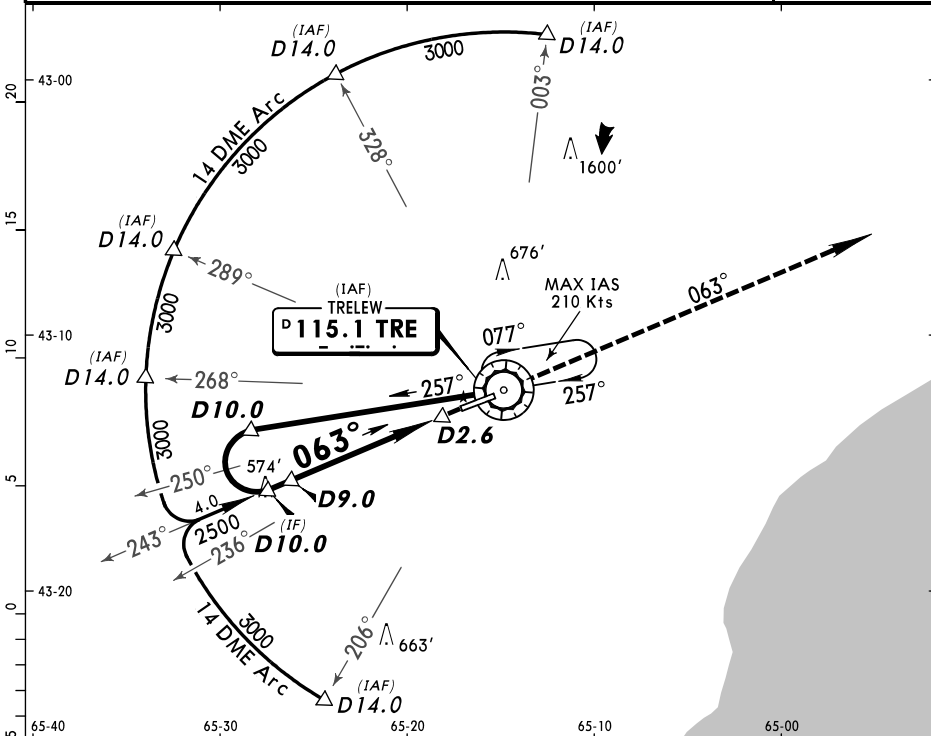


TRELEW Approach			TRELEW Tower	
118.7			118.7	120.65
VOR TRE 115.1	Final Apch Crs 063°	Minimum Alt D9.0 2500' (2360')	MDA(H) 470' (330')	Apt Elev 140' Rwy 06 140'
MISSED APCH: Climb on TRE VOR R-063 to 3000' and follow instructions from CONTROL.				
Alt Set: hPa Rwy Elev: 5 hPa Trans level: By ATC Trans alt: 3000'				
1. DME required.				
MSA TRE VOR				



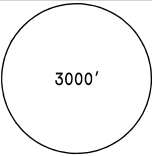
Gnd speed-Kts	70	90	100	120	140	160	
MAP at D2.6 or D9.0 to MAP	6.4	5:29	4:16	3:50	3:12	2:45	2:24

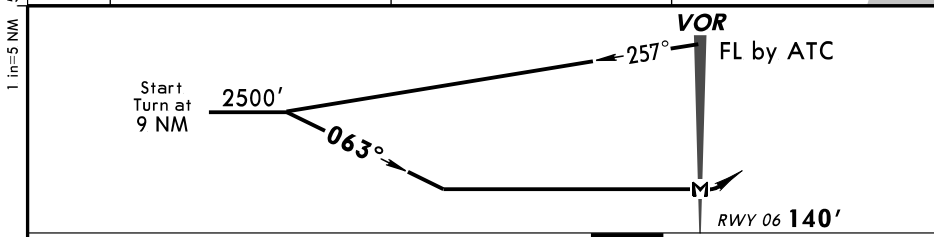
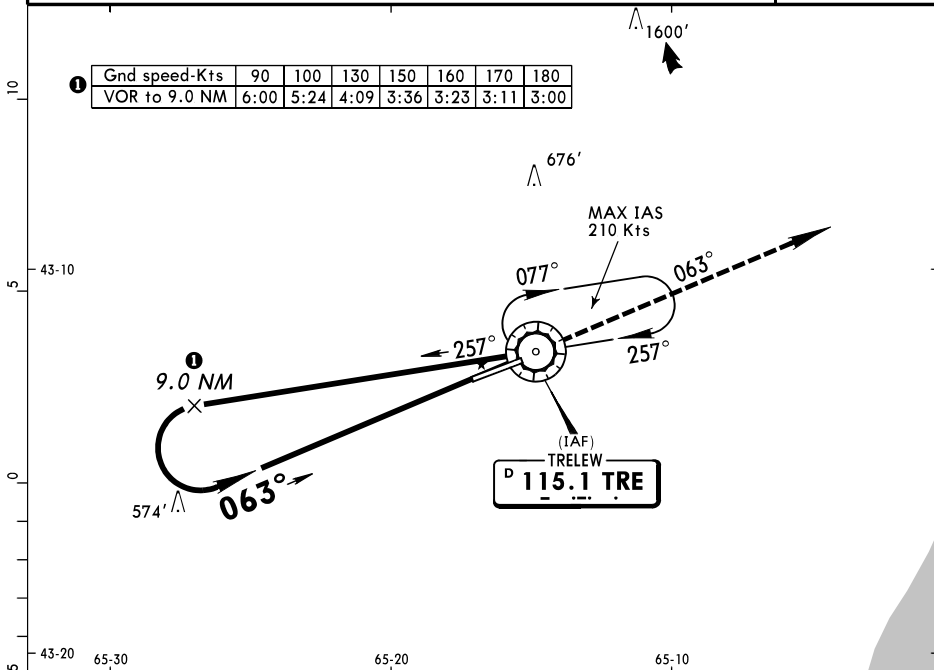
3000' TRE
↑ on **115.1**
R-063

STRAIGHT-IN LANDING RWY 06	
MDA(H) 470' (330')	
A	
B	2000m
C	
D	2400m

CIRCLE-TO-LAND	
Not Authorized South of Rwy 06/24	
Max Kts	MDA(H)
100	720' (580') - 2000m
135	720' (580') - 2800m
180	810' (670') - 3700m
205	1070' (930') - 4600m

PANS OPS

TRELEW Approach			TRELEW Tower	
118.7			118.7	120.65
VOR TRE 115.1	Final Apch Crs 063°	No FAF	MDA(H) 720' (580')	Apt Elev 140' Rwy 06 140'
MISSED APCH: Climb on TRE VOR R-063 to 3000' and follow instructions from CONTROL.				 3000' MSA TRE VOR
Alt Set: hPa	Rwy Elev: 5 hPa	Trans level: By ATC	Trans alt: 3000'	

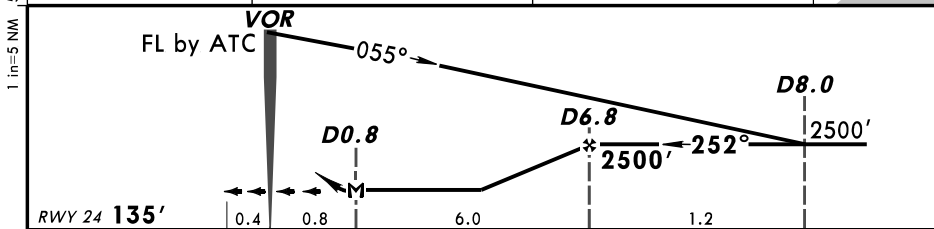
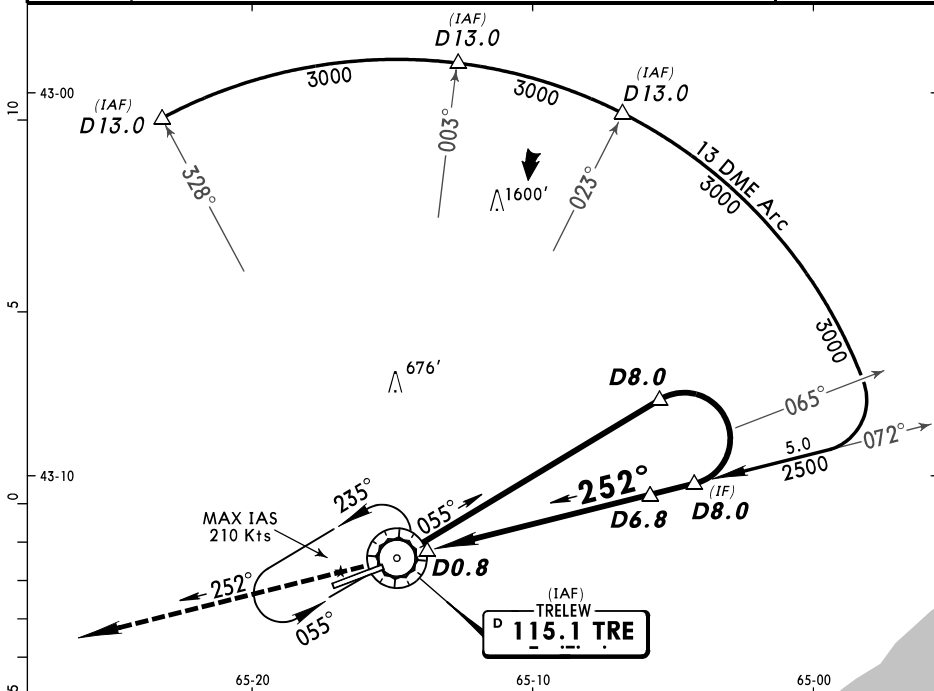


				3000' TRE on 115.1 ↑ R-063
MAP at VOR				

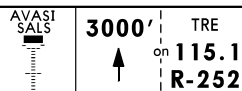
STRAIGHT-IN LANDING RWY 06		CIRCLE-TO-LAND	
MDA(H) 720' (580')		Not Authorized South of Rwy 06/24	
A	2000m	Max Kts 100	MDA(H) 720' (580')-2000m
B	2800m	135	720' (580')-2800m
C	3200m	180	810' (670')-3700m
D	3200m	205	1070' (930')-4600m

PANS OPS

TRELEW Approach				TRELEW Tower	
118.7		118.7		120.65	
VOR TRE 115.1	Final Apch Crs 252°	Minimum Alt D6.8 2500' (2365')	MDA(H) 560' (425')	Apt Elev 140' Rwy 24 135'	3000' MSA TRE VOR
MISSED APCH: Climb on TRE VOR R-252 to 3000' and follow instructions from CONTROL.					
Alt Set: hPa		Rwy Elev: 5 hPa		Trans level: By ATC	
1. DME required.				Trans alt: 3000'	

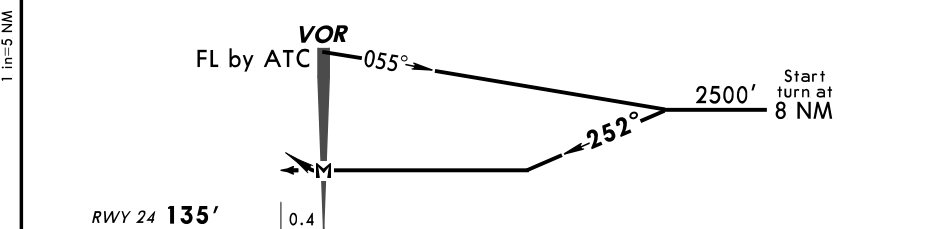
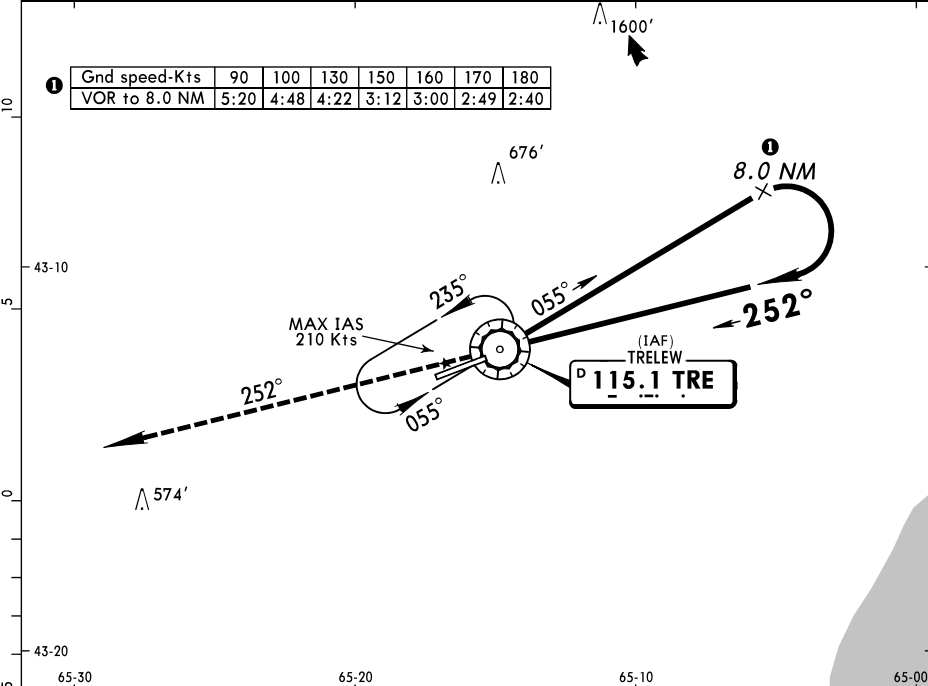


Gnd speed-Kts	70	90	100	120	140	160	
MAP at D0.8 or D6.8 to MAP	6.0	5:09	4:00	3:36	3:00	2:34	2:15



STRAIGHT-IN LANDING RWY 24			CIRCLE-TO-LAND	
MDA(H) 560' (425')			Not Authorized South of Rwy 06/24	
		ALS out	Max Kts	MDA(H)
A			100	720' (580') - 2000m
B	2000m	2400m	135	720' (580') - 2800m
C			180	810' (670') - 3700m
D	2400m	2800m	205	1070' (930') - 4600m

TRELEW Approach			TRELEW Tower		
118.7			118.7	120.65	
VOR TRE 115.1	Final Apch Crs 252°	No FAF	MDA(H) 560' (425')	Apt Elev 140' Rwy 24 135'	3000'
MISSED APCH: Climb on TRE VOR R-252 to 3000' and follow instructions from CONTROL.					
Alt Set: hPa	Rwy Elev: 5 hPa	Trans level: By ATC	Trans alt: 3000'		MSA TRE VOR



AVASI SALS	3000'	TRE
	↑	on 115.1
		R-252

STRAIGHT-IN LANDING RWY 24			CIRCLE-TO-LAND	
MDA(H) 560' (425')			Not Authorized South of Rwy 06/24	
		ALS out	Max Kts	MDA(H)
A			100	720' (580') -2000m
B	2000m	2400m	135	720' (580') -2800m
C			180	810' (670') -3700m
D	2400m	2800m	205	1070' (930') -4600m

TRELEW Approach			TRELEW Tower	
118.7			118.7	120.65
Lctr T 280	Final Apch Crs 245°	No FAF	MDA(H) 560' (425')	Apt Elev 140' Rwy 24 135'
MISSED APCH: Climb on 245° bearing from T Lctr to 3000' and follow instructions from CONTROL.				3000'
Alt Set: hPa		Rwy Elev: 5 hPa	Trans level: By ATC	
				MSA TRE VOR

BRIEFING STRIP™

10

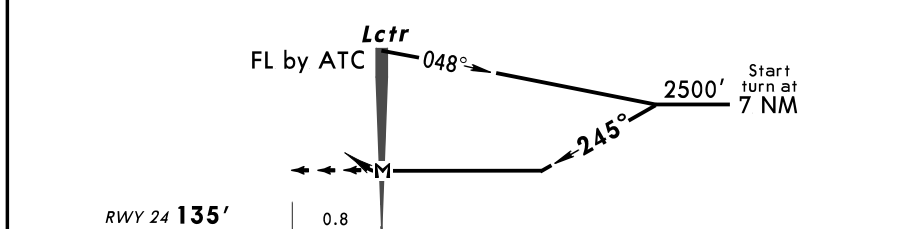
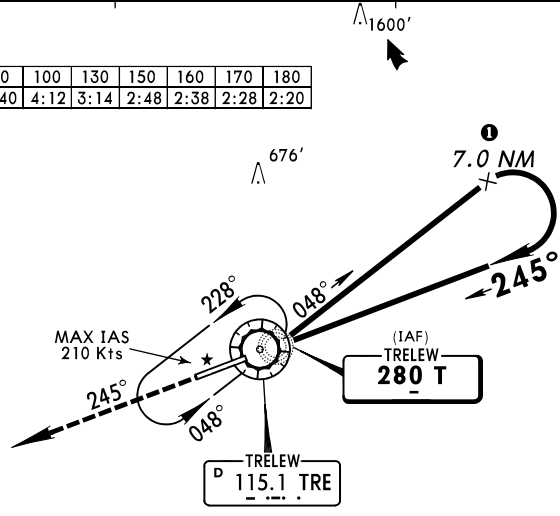
5

0

5

1 in=5 NM

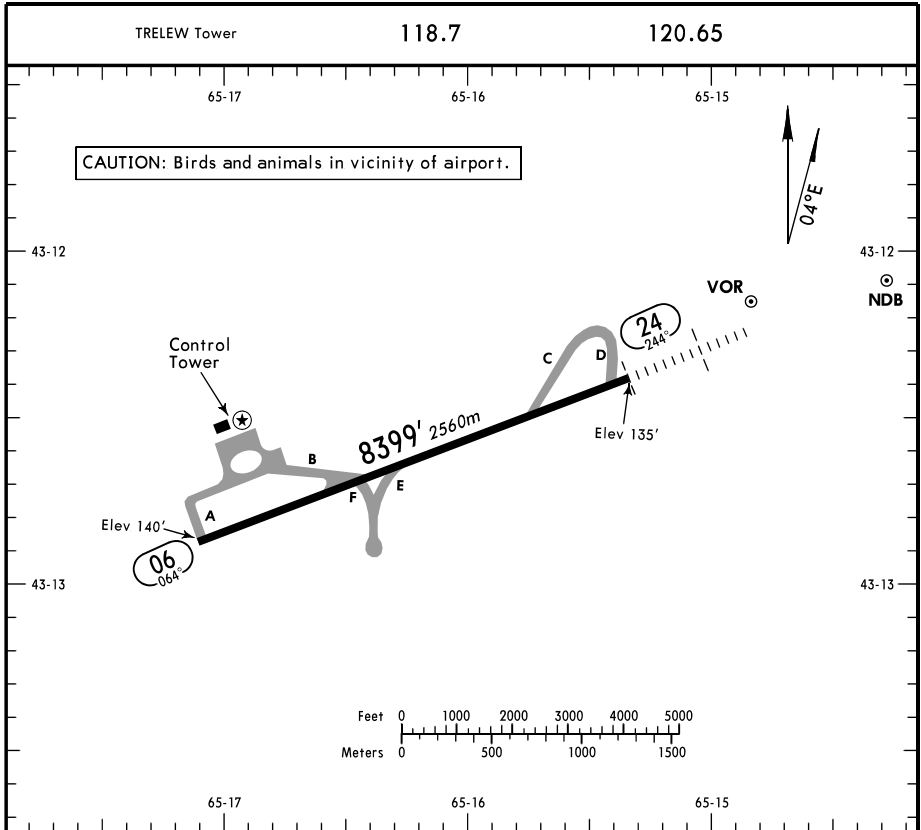
Gnd speed-Kts	90	100	130	150	160	170	180
VOR to 7.0 NM	4:40	4:12	3:14	2:48	2:38	2:28	2:20



					AVASI SALS	3000'	T
						↑	on 280 245°
MAP at Lctr							

STRAIGHT-IN LANDING RWY 24			CIRCLE-TO-LAND		
MDA(H) 560' (425')			Not Authorized South of Rwy 06/24		
		ALS out	Max Kts	MDA(H)	
A			100	720' (580') -2000m	
B	2000m	2400m	135	720' (580') -2800m	
C			180	810' (670') -3700m	
D	2400m	2800m	205	1070' (930') -4600m	

PANS OPS



ADDITIONAL RUNWAY INFORMATION					
RWY		USABLE LENGTHS		TAKE-OFF	WIDTH
		LANDING	BEYOND		
		Threshold	Glide Slope		
06	RL				148'
24	RL SALS AVASI				45m

TAKE-OFF			
All Rwy's			
AIR CARRIER (FAR 121)			
1 Eng	Available Landing Minimums	2 Eng	Take-Off Altn Apt. Filed 30m-400m or Available Landing Minimums
2 Eng	Take-Off Altn Apt. Filed 30m-300m or Available Landing Minimums		
3 & 4 Eng	Take-Off Altn Apt. Filed 30m-300m	3 & 4 Eng	Take-Off Altn Apt. Filed 30m-400m