

**AD 2 AERODROMES****VRMG AD 2.1 Aerodrome location indicator and name****VRMG -GAN ISLAND/Gan****VRMG AD 2.2 Aerodrome geographical and administrative data**

1	<i>ARP coordinates and site at AD</i>	004136S 0730920E Runway mid-point
2	<i>Direction and distance from City</i>	148° 13 KM from Hithadhoo
3	<i>Elevation / Reference temperature</i>	1.8 M (6 FT) / 30.1°C
4	<i>MAG VAR/Annual change</i>	5° W (1995)
5	<i>AD Operators</i>  <i>Address</i>  <i>Telephone</i> <i>Fax</i> <i>E-mail</i>	Gan Airport Compnay ltd.  Gan International Airport Gan, Addu Atoll Republic of Maldives  Tel: (960) 689 8010 Telefax: (960) 689 8009 <a href="mailto:info@ganairport.aero">info@ganairport.aero</a>
6	<i>Types of traffic permitted (IFR/VFR)</i>	IFR / VFR
7	<i>Remarks</i>	Nil.

**VRMG AD 2.3 Operational hours**

1	<i>AD Operator</i>	H24
2	<i>Customs and immigration</i>	H24
3	<i>Health and sanitation</i>	H24
4	<i>AIS Briefing Office</i>	H24
5	<i>ATS Reporting Office (ARO)</i>	H24
6	<i>MET Briefing Office</i>	H24
7	<i>ATS</i>	H24
8	<i>Fuelling</i>	H24
9	<i>Handling</i>	H24
10	<i>Security</i>	H24
11	<i>De-icing</i>	Nil
12	<i>Remarks</i>	1. Prior permission required for Non-scheduld traffic.

**VRMG AD 2.4 Handling services and facilities**

1	<i>Cargo handling facilities</i>	All facilities available to handle upto B767 - 300
2	<i>Fuel/oil types</i>	Jet A1
3	<i>Fuelling facilities/capacity</i>	1 truck, capacity 40 MT/2300 KL
4	<i>De-icing facilities</i>	Nil
5	<i>Hanger space available for visiting aircraft</i>	Nil
6	<i>Repair facilities for visiting aircraft</i>	Nil
7	<i>RMK</i>	Nil

### VRMG AD 2.5 Passenger facilities

1	<i>Hotels</i>	AT AD
2	<i>Restaurants</i>	AT A and in the city
3	<i>Transportation</i>	Private taxis / bus service
4	<i>Medical facilities</i>	First aid at AD . Hospital in the city
5	<i>Bank/Post</i>	AT AD. Open during flight operation hours
6	<i>Tourist Office</i>	Nil
7	<i>Remarks</i>	Nil

### VRMG AD 2.6 Rescue and fire fighting services

1	<i>AD category for fire fighting</i>	CAT 7
2	<i>Rescue equipment</i>	All equipment required for CAT 7 available
3	<i>Capability for removal of disabled aircraft</i>	Nil
4	<i>Remarks</i>	Nil

### VRMG AD 2.7 Seasonal availability - clearing

1	<i>Types of clearing equipment</i>	Nil
2	<i>Clearance priorities</i>	Nil
3	<i>Remarks</i>	Aerodrome service right throughout the year

### VRMG AD 2.8 Aprons, taxiways and check locations data

1	<i>Apron surface and strength</i>	Surface: Concrete Strength: PCN 35
2	<i>Taxiway width, surface and strength</i>	Width: 19.5 M Surface: Concrete Strength: PCN 35
	<i>ACL location and elevation</i>	Location: Runway mid-point Elevation: 1.8 M / 6 FT
4	<i>VOR/INS Checkpoint</i>	VOR: Nil INS: Nil
5	<i>Remarks</i>	Nil

### VRMG AD 2.9 Surface movement guidance and control system and markings

1	<i>Use of aircraft stand ID signs, TWY guide lines and visual docking/parking guidance system of aircraft stands</i>	TWY Sig boards, LGT at all intersections with TWY and RWY
2	<i>RWY/TWY markings and LGT</i>	RWY: Designation, THR, TDZ, fixed distance, centreline and pre- THR markings. THR and end lights. TWY : centreline and holding position markings. Edge lights on TWY A and B
3	<i>Stop bars</i>	Nil
4	<i>Remarks</i>	Nil

**VRMG AD 2.10 Aerodrome obstacles**

<i>In approach/TKOF areas</i>			<i>In circling area and at AD</i>		<i>Remarks</i>
1			2		
<i>RWY/Area affected</i>	<i>Obstacle type elevation markings / LGT</i>	<i>Coordinate s</i>	<i>Obstacle type elevation markings / LGT</i>	<i>Coordinates</i>	
<i>a</i>	<i>b</i>	<i>c</i>	<i>a</i>	<i>b</i>	
			Hithadhu Dhiraagu Antenna - 72 M	00 36 51 S 073 05 49 E	Nil
			Hithadhu Dhiraagu Site 2 (Near Hithadhu School) 45M	00 35 35 S 073 04 49 E	Nil
			Hithadhu Dhiraagu Site 3 (Near Police Academy) 30 M	00 36 16 S 073 05 24 E	Nil
			Maradhu dhiraagu Antenna 30 M	00 40 10 S 073 07 21 E	
			Feydhu dhiraagu Antenna 30 M	00 40 55 S 073 08 05 E	
			Dhiraagu Antenna on Gan Building 80 17 M	00 41 18 S 073 09 01 E	
			Dhiraagu Antenna at Gan Site 2 42 M		
			Dhiraagu Antenna at Hulhumeedhu 45 M	00 35 23 S 073 13 18 E	
			dhiraagu Antenna At Herethere 45 M	00 36 40 S 073 13 29 E	
			Dhiraagu Antenna at Villingili 25 M	00 40 24 S 073 11 34 E	
			Wataniya Antenna at Feydhu 45 M	00 40 37.31 S 073 07 49.84 E	
			Wataniya Antenna at Hithadhu Site 1 55 M	00 36 45.22 S 073 05 24.54 E	
			Wataniya Antenna at Hithadhu Site 2 40 M	00 35 47.26 S 073 05 24.54 E	
			Wataniya Antenna at Hulhudhu 80 M	00 35 26.04 S 073 13 35.82 E	
			Wataniya Antenna at GAN 25 M	00 41 23.03 S 073 09 09.5 E	
			Runway 10 Windsock 7 M	00 41 27.0 S 073 08 45.2 E	
			Runway 28 Windsock 7 M	00 41 44.4 S 073 09 55.4 E	
			Apron floodlight Mast NR 1 20 M	00 41 25.2 S 073 09 18.3 E	

**VRMG AD 2.10 Aerodrome obstacles**

In approach/TKOF areas			In circling area and at AD		Remarks
1			2		3
RWY/Area affected	Obstacle type elevation markings / LGT	Coordinate s	Obstacle type elevation markings / LGT	Coordinates	
a	b	c	a	b	
			Apron Floodlight Mast NR 2 20 M	00 41 25.5 S 073 09 20.4 E	
			Apron Floodlight Mast NR 3 20 M	00 41 26.2 S 073 09 25.0 E	
			Apron Floodlight Mast NR 4 20 M	00 41 26.7 S 073 09 27.9 E	
			Apron Floodlight Mast NR 5 20 M	00 41 27.2 S 073 09 31.0 E	
			Apron Floodlight Mast NR 6 20 M	00 41 27.6 S 073 09 34.0 E	
			NDB Antenna (W) 21 M	00 41 51.2 S 073 09 49.5 E	
			NDB Antenna ( E) 21 M	00 41 51.8 S 073 09 51.5 E	
			VOR / DME 8.5 M	00 41 39.37 S 073 09 19.77 E	

**VRMG AD 2.11 Meteorological information provided**

1	Associated MET Office	Gan MET Office
2	Hours of service MET Office outside hours	H24 -
3	Office responsible for TAF preparation Periods of validity	National Meteorological Centre 24 HR
4	Type of landing forecast Interval of issuance	TREND on request
5	Briefing/consulataion provided	At Gan Met. office
6	Flight documentation Language(s) used	Charts, abbreviated plain language text English
7	Charts and other INFO AVBL	S, U <sub>85</sub> , U <sub>50</sub> , U <sub>25</sub> , SWH, SWM, T
8	Supplementary EQPT AVBL for INFO for briefing or consultation	Telefax: + (960) 6898007
9	ATS Units Provided with information	Gan TWR Male' AACC
10	Additional information	2 hr prior notice required

**VRMG AD 2.12 Runway physical characteristics**

Designation RWY NR	True & MAG BRG	Dimensions of RWY (M)	Strength (PCN) and surface of RWY and SWY	THR coordinates	THR elevation and highest elevation of TDZ of precision APP RWY
1	2	3	4	5	6
10	099° GEO 104° MAG	2651X45	PCN 35 Concrete	004129.62 S 0730840.90E	THR 1.7M / 5.5FT
28	279° GEO 284° MAG			004141.77S 0730959.90E	THR 1.9M / 6FT

### VRMG AD 2.12 Runway physical characteristics

Designation RWY NR	True & MAG BRG	Dimensions of RWY (M)	Strength (PCN) and surface of RWY and SWY	THR coordinates	THR elevation and highest elevation of TDZ of precision APP RWY
1	2	3	4	5	6
Slope of RWY-SWY	SWY dimensions (M)	CWY dimensions (M)	Strip dimensions (M)	OFZ	Remarks
7	8	9	10	11	12
0%	Nil	500 X 150	2651 X 300	Nil	Nil
0%	Nil	1325 X 150	2651 X 300	Nil	Nil

### VRMG AD 2.13 Declared distances

RWY	TORA (M)	TODA (M)	ASDA (M)	LDA (M)	Remarks
1	2	3	4	5	6
10	2651	2651	3151	2558	Nil
28	2651	2651	3976	2558	Nil

### VRMG AD 2.14 Approach and runway lighting

RWY Designator	APP LGT type LEN INTST	THR LGT colour WBAR	VASIS (MEHT) PAPI	TDZ. LGT LEN	RWY Centre Line LGT Length, spacing colour, INTST	RWY edge LGT LEN. spacing colour INTST	RWY End LGT colour WBAR	SWY LGT LEN (M) colour	Remarks
1	2	3	4	5	6	7	8	9	10
10	SALS 420 M 1 to 5	Green Yes	PAPI on left side3° 53FT	Nil	Nil	2651 M 58.9 M Red, white& Yellow 1 to 5	Red -	Nil	Nil
28	SALS 420 M 1 to 5	Green Yes	PAPI on left side3° 53FT	Nil	Nil	2651 M 58.9 M Red, white& Yellow 1 to 5	Red -	Nil	Nil

### VRMG AD 2.15 Other lighting, secondary power supply

1	ABN/IBN location, characteristics and hours of operation	ABN on top of Control Tower, ALTN WIG EV 5 SEC/ IBN : Nil,HN
2	LDI location and LGT Anemomrter location and LGT	LDI: Nil Anemometer: On top of control tower Nil
3	TWY edge and centre line lighting	Edge TWY, A, B Centre Line: Nil
4	Secondary power supply / switch-over time	All airfield lighting /12 SEC
5	Remarks	Nil

### VRMG AD 2.16 Helicopter landing area

1	Coordinates TLOF or THR of FATO	Nil
---	---------------------------------	-----

### VRMG AD 2.16 Helicopter landing area

2	TLOF and/or FATO elevation M/FT	Nil
3	TLOF and FATO area dimensions, surface, strength, marking	Nil
4	True and MAG BRG of FATO	Nil
5	Declared distance available	Nil
6	APP and FATO lighting	Nil
7	Remarks	All helicopters land/take-off on/from RWY

### VRMG AD 2.17 ATS airspace

1	Designation and lateral limits	GAN CTR A circle, radius 20 NM centred at GAN VOR 004139S 0730920E
2	Vertical limits	SFC to 8500 FT
3	Airspace classification	D
4	ATS unit Language(s)	GAN Tower English
5	Transition altitude	11 000 FT MSL
6	Remarks	Nil

### VRMG AD 2.18 ATS communication facilities

Service Designation	Call sign	Frequency	Hours of operation	Remarks
1	2	3	4	5
TWR	GAN Control	119.1 MHz 121.5 MHz 121.6 MHz	HO HO HO	Primary frequency Emergency frequency Frequency SMC frequency

### VRMG AD 2.19 Radio navigation and landing aids

Type of aid, CAT of ILS/MLS (For VOR/ILS/MLS, give VAR)	ID	Frequency	Hours of operation	Site of transmitting antenna coordinates	Elevation of DME transmitting antenna	Remarks
1	2	4	5	6	7	8
VOR /DME (5° W, 1995)	GN	113.4 KHz CH 81X	H24	004139S 0730920E	10 M	Nil
NDB (5° W, 1995)	GN	317	H24	004151.59S 0730950E	Nil	Nil

### VRMG AD 2.20 Local traffic regulations

Nil

### VRMG AD 2.21 Noise abatement procedures

Nil

## VRMG AD 2.22 Flight Procedures

Nil

## VRMG AD 2.23 Additional Information

Concentration of birds at Gan Airport, on and around runway 10/28 are expected. All pilots are advised to exercise caution.

## VRMG AD 2.24 Charts related to an aerodrome

Chart Name	Page
Aerodrome Chart	VRMG AD 2 -9
Instrument Approach Chart - ICAO, NDB RWY 10	VRMG AD 2 -11
Instrument Approach Chart - GPS, RWY 10	VRMG AD 2 - 13
Instrument Approach Chart - ICAO, NDB RWY 28	VRMG AD 2 - 15
Instrument Approach Chart - GPS, RWY 28	VRMG AD 2 - 17
Instrument Approach Chart - GPS, VOR / DME RWY 10	VRMG AD 2 - 19
Instrument Approach Chart - GPS, VOR / DME RWY 28	VRMG AD 2 - 21
Instrument Approach Chart - VOR RWY 10	VRMG AD 2 - 23
Instrument Approach Chart - VOR RWY 28	VRMG AD 2 - 25
Instrument Approach Chart - VOR / DME RWY 10	VRMG AD 2 - 27
Instrument Approach Chart - VOR / DME RWY 28	VRMG AD 2 - 29

THIS PAGE INTENTIONALLY LEFT BLANK



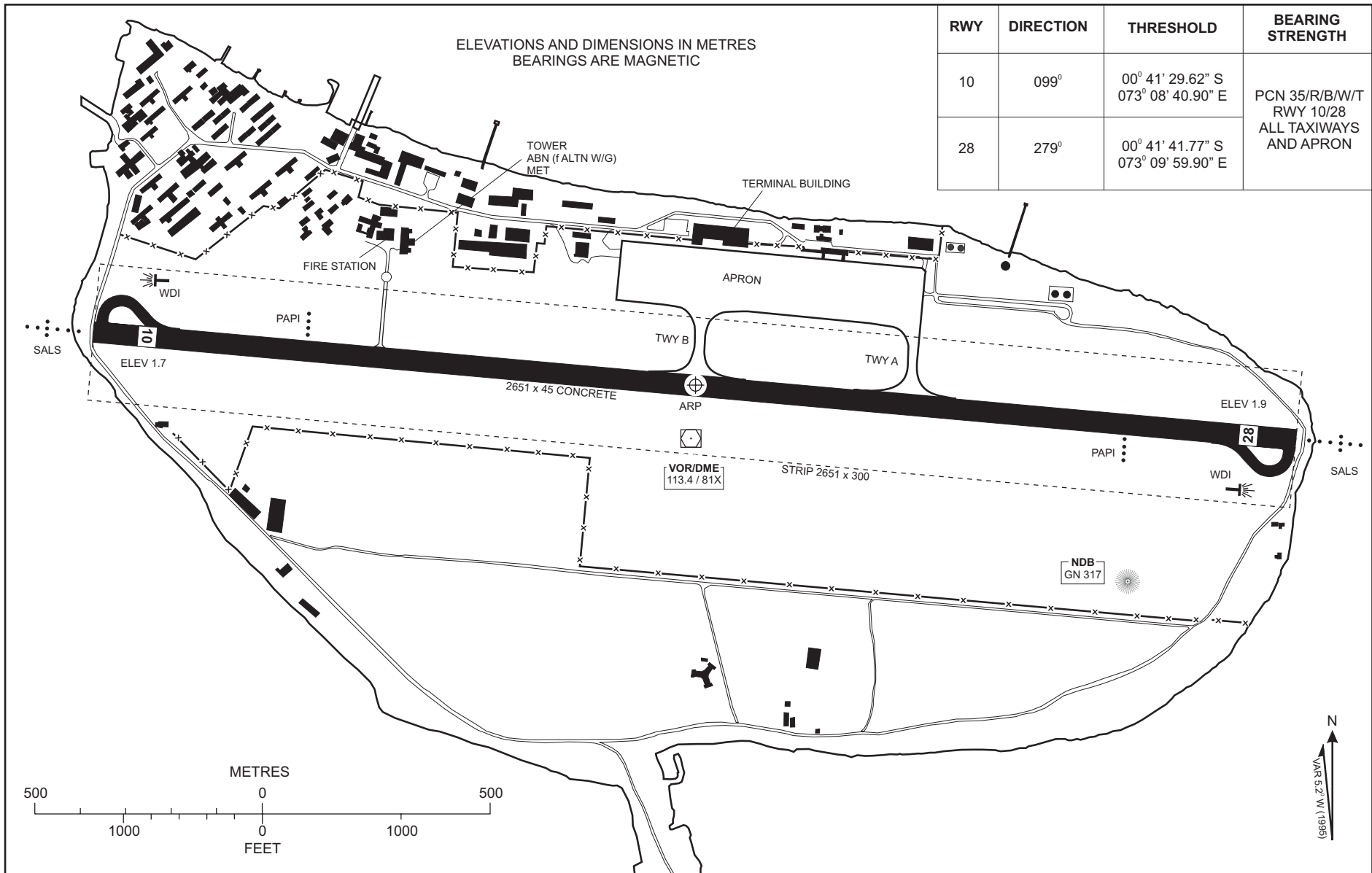
AERODROME CHART

00° 41' 53.70" S  
073° 09' 20.33" E

TWR 119.1

GAN ISLAND / GAN INTERNATIONAL

RWY	DIRECTION	THRESHOLD	BEARING STRENGTH
10	099°	00° 41' 29.62" S 073° 08' 40.90" E	PCN 35/R/B/W/T RWY 10/28 ALL TAXIWAYS AND APRON
28	279°	00° 41' 41.77" S 073° 09' 59.90" E	



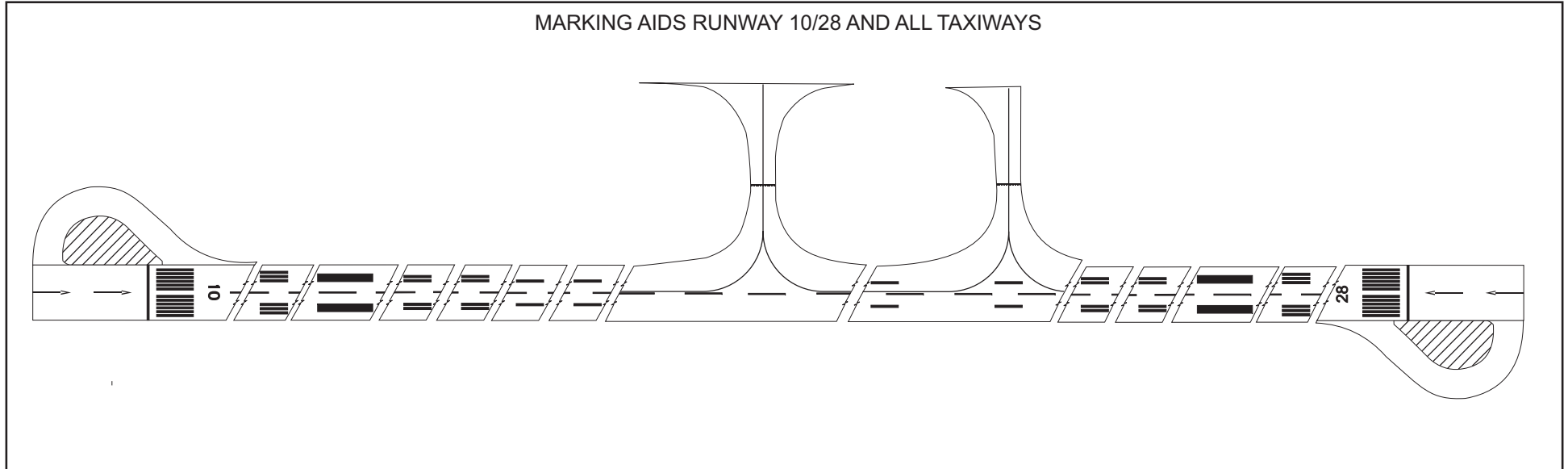
AERODROME CHART

00° 41' 53.70" S  
073° 09' 20.33" E

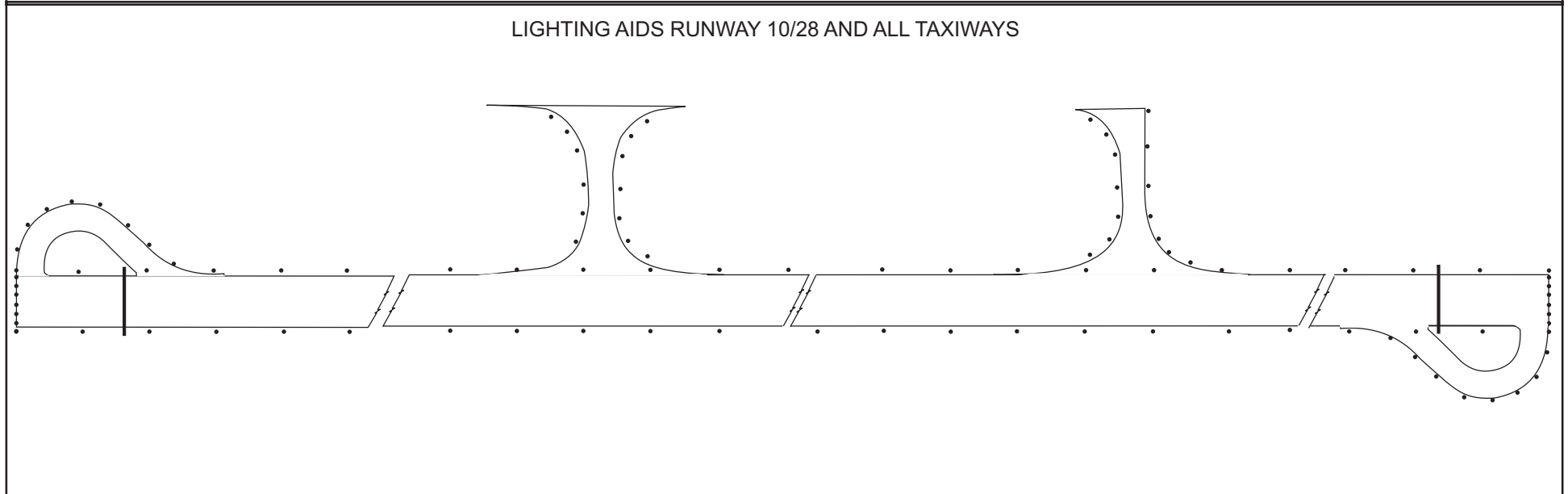
TWR 119.1

GAN ISLAND / GAN INTERNATIONAL

MARKING AIDS RUNWAY 10/28 AND ALL TAXIWAYS



LIGHTING AIDS RUNWAY 10/28 AND ALL TAXIWAYS

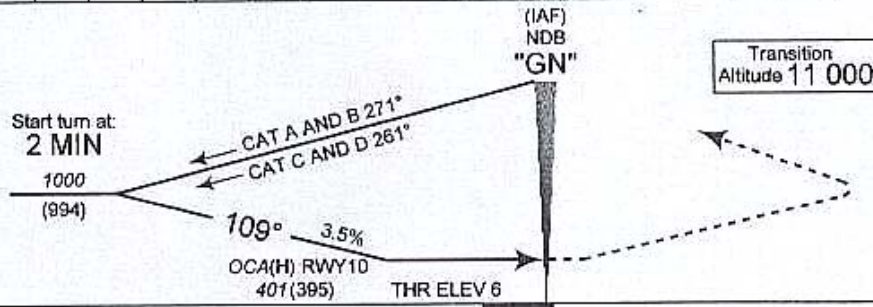
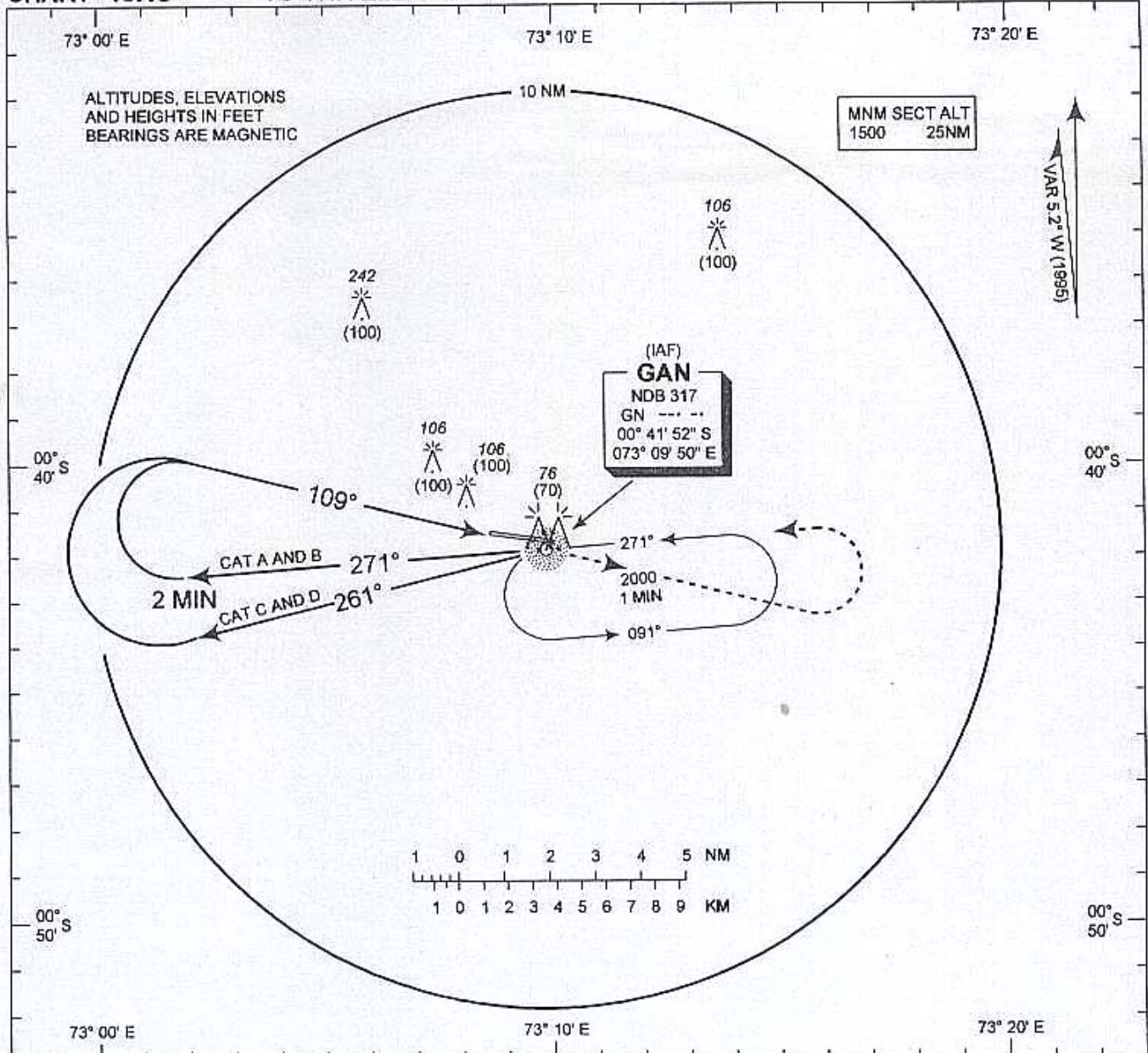


**INSTRUMENT  
APPROACH  
CHART - ICAO**

**ELEV 6 FT  
HEIGHTS RELATED  
TO THR ELEV - 6 FT**

**TWR 119.1**

**GAN ISLAND / GAN  
NDB  
RWY 10**



MISSED APPROACH: Climb straight ahead to 2000 (1994), on passing 1500 (1494) turn left to "GN" NDB.

CHANGES: Aircraft Category

Aircraft Category	A	B	C	D	
Straight -in	401(395)				
Circling	401(395)	498(492)	597(591)	695(689)	
Speed	knots	90	120	150	180
Rate of descent	ft / min	320	430	530	640

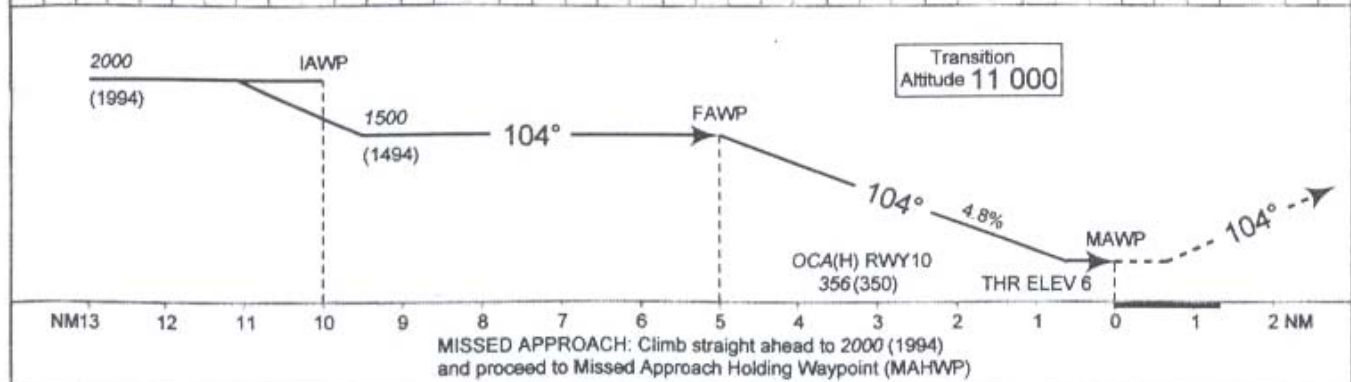
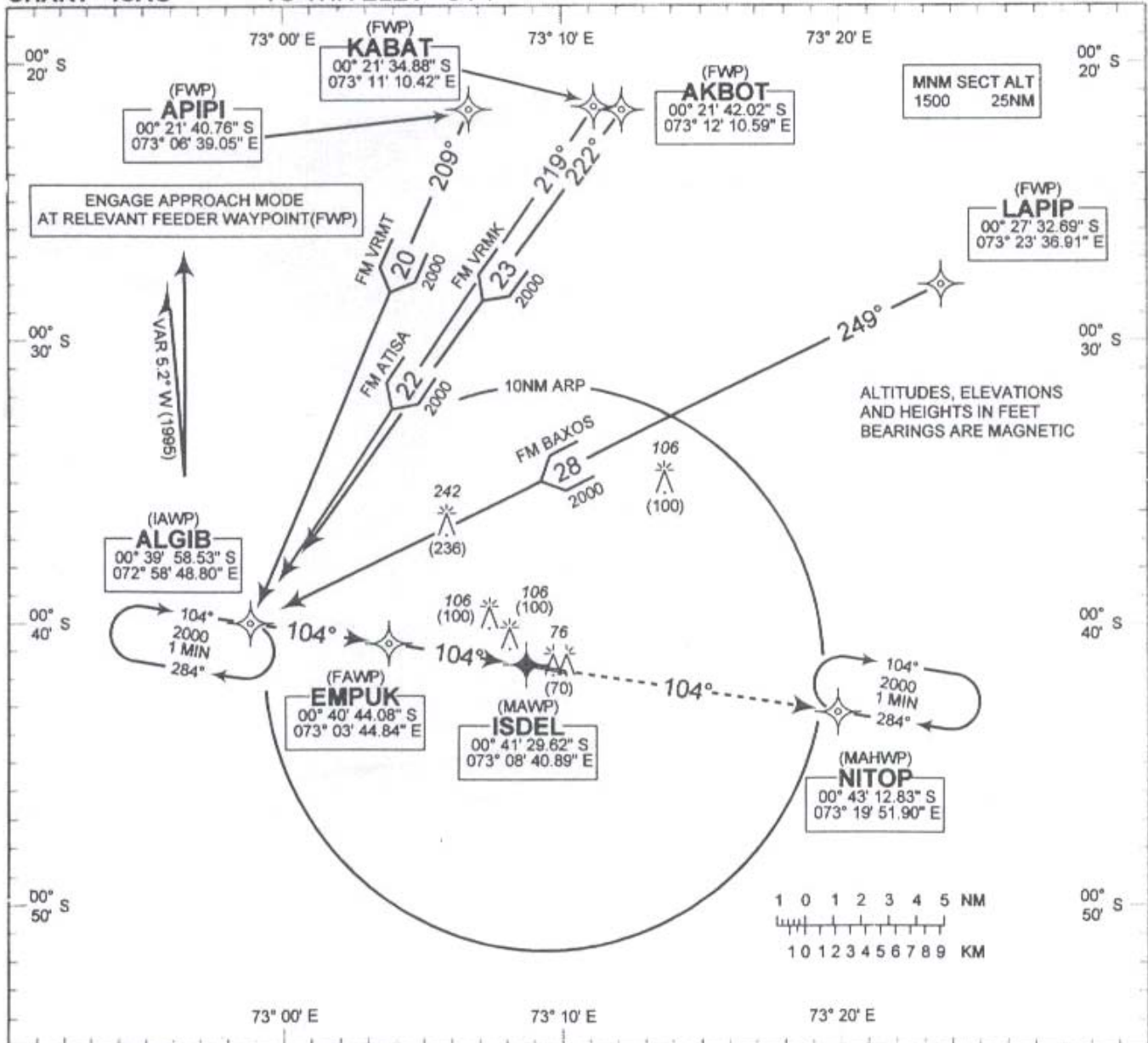


**INSTRUMENT  
APPROACH  
CHART - ICAO**

**ELEV 6 FT  
HEIGHTS RELATED  
TO THR ELEV - 6 FT**

TWR 119.1

**GAN ISLAND / GAN  
GPS  
RWY 10**



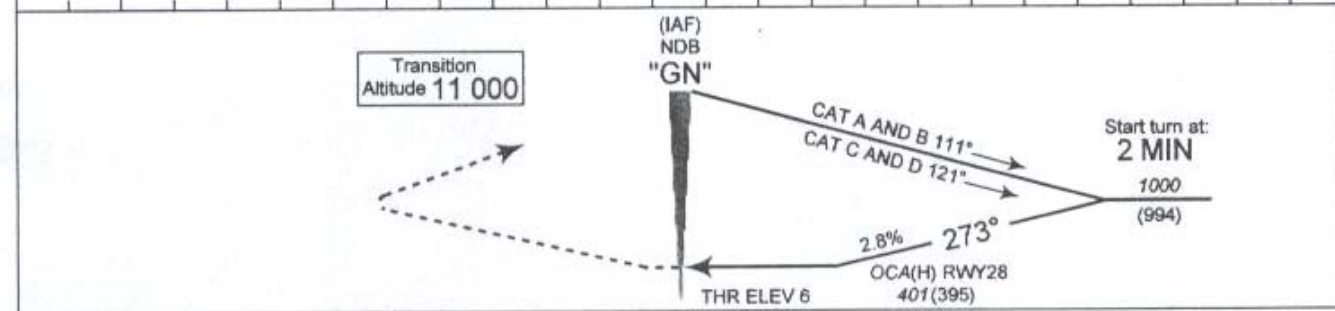
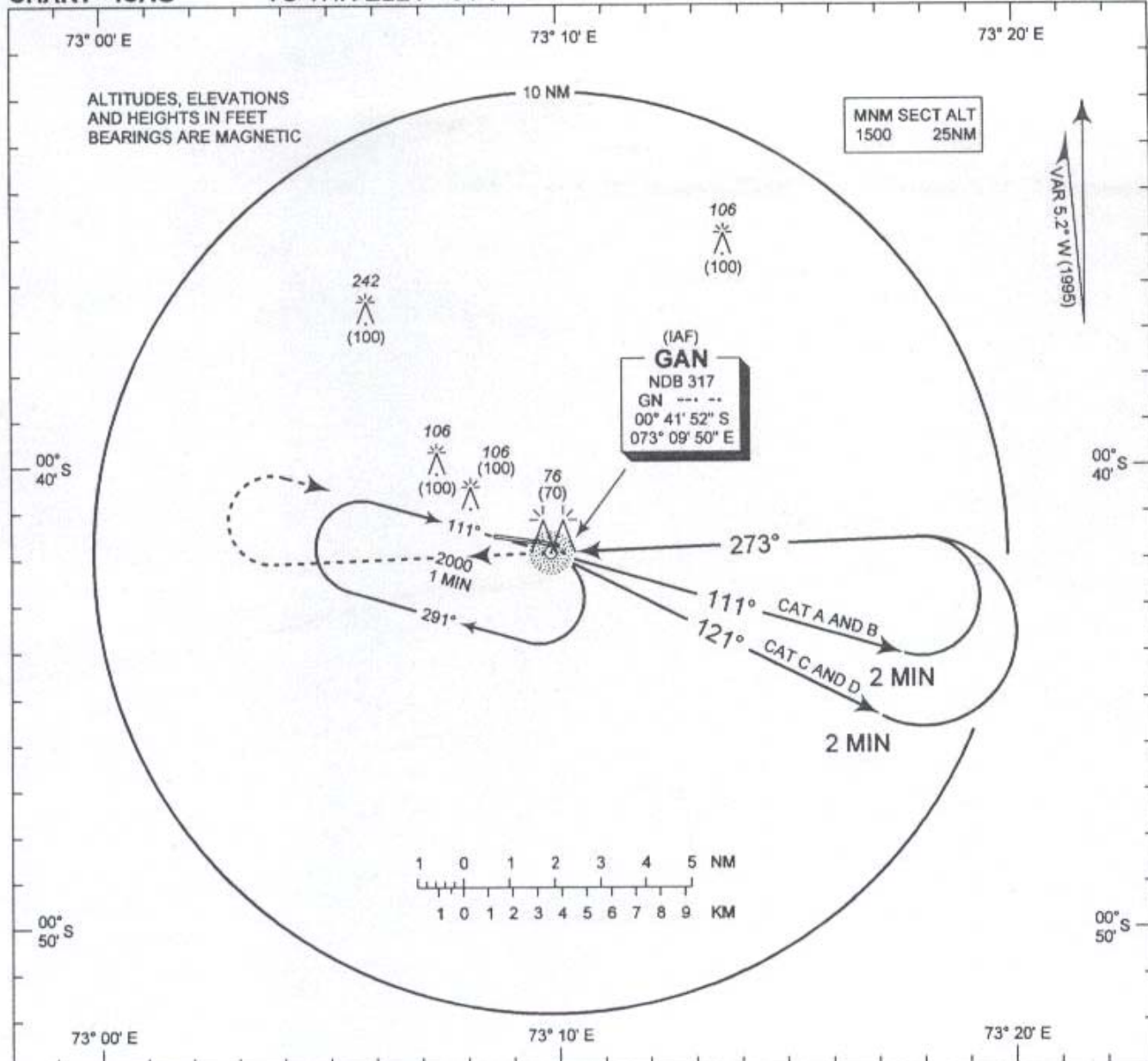
Aircraft Category	Aircraft Category				
	A	B	C	D	
Straight - In	352(346)				
Circling	400(394)	498(492)	597(591)	695(689)	
Track Miles	4	3	2	1	
Advisory Altitude (Height)	1220(1214)	930(924)	640(634)	350(344)	
Speed	knots	90	120	150	180
Rate of descent	ft / min	430	580	720	870

**INSTRUMENT  
APPROACH  
CHART - ICAO**

**ELEV 6 FT  
HEIGHTS RELATED  
TO THR ELEV - 6 FT**

**TWR 119.1**

**GAN ISLAND / GAN  
NDB  
RWY 28**



MISSED APPROACH: Climb straight ahead to 2000 (1994),  
on passing 1500 (1494) turn right to "GN" NDB.

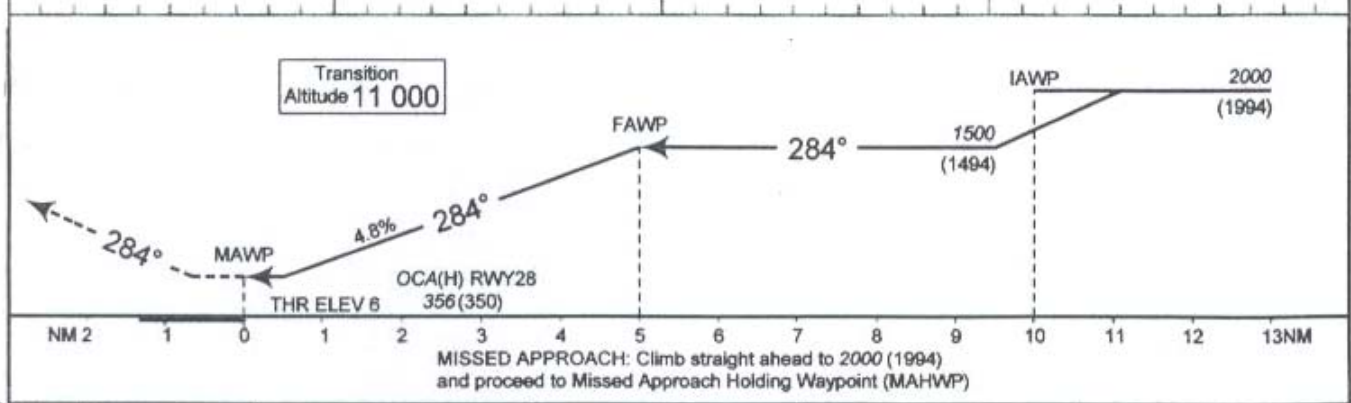
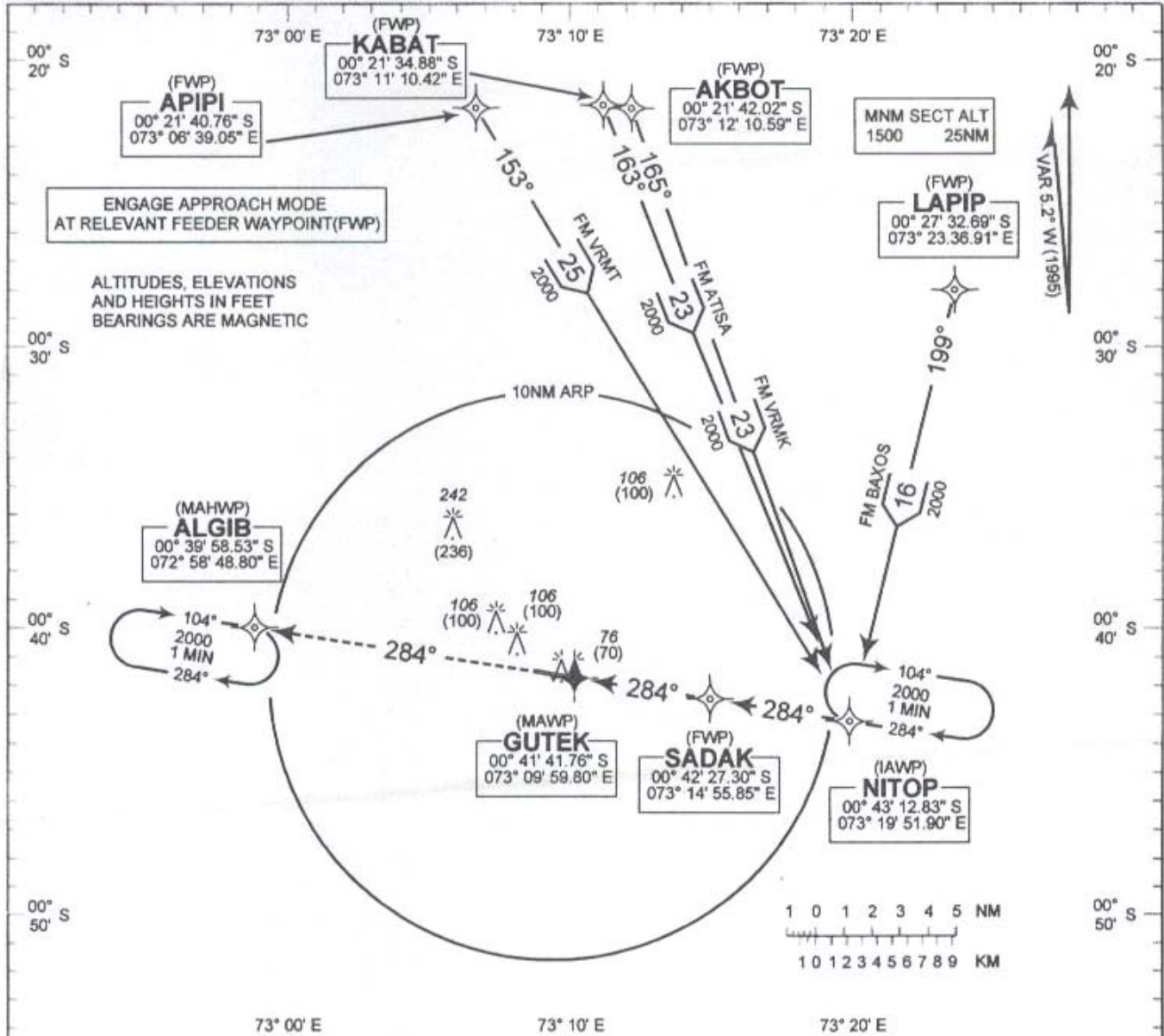
Aircraft Category	Aircraft Category				
	A	B	C	D	
Straight - In	401(395)				
Circling	401(395)	498(492)	597(591)	695(689)	
Speed	knots	90	120	150	180
Rate of descent	ft / min	260	340	430	510

**INSTRUMENT  
APPROACH  
CHART - ICAO**

**ELEV 6 FT  
HEIGHTS RELATED  
TO THR ELEV - 6 FT**

**TWR 119.1**

**GAN ISLAND / GAN  
GPS  
RWY 28**



CHANGES: Aircraft Category

Aircraft Category	A	B	C	D
Straight - in			322(316)	
Circling	400(394)	498(492)	597(591)	695(689)
Track Miles	4	3	2	1
Advisory Altitude (Height)	1220(1214)	930(924)	640(634)	350(344)
Speed	knots	90	120	150
Rate of descent	ft / min	430	580	720

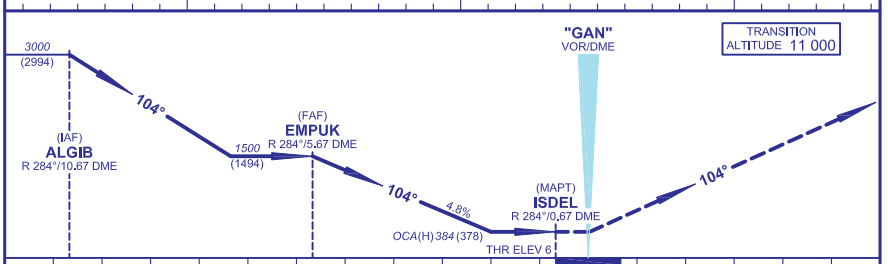
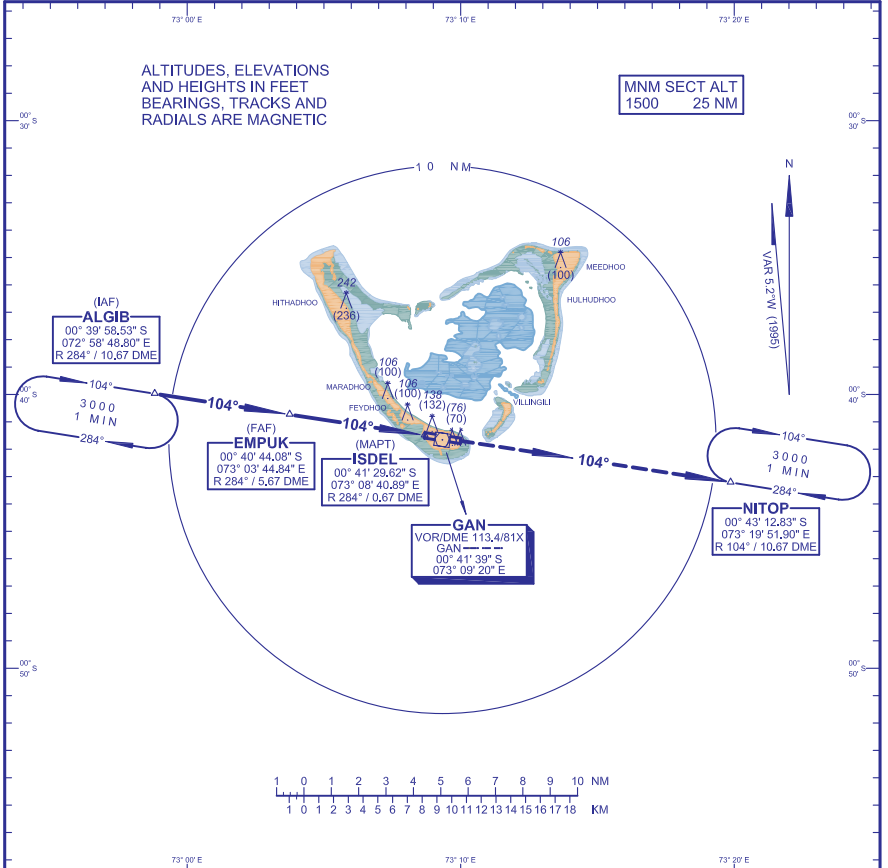


**INSTRUMENT  
APPROACH  
CHART - ICAO**

**ELEV 6 FT  
HEIGHTS RELATED  
TO THR ELEV - 6 FT**

**TWR 119.1**

**GAN ISLAND / GAN  
GPS, VOR/DME  
RWY 10**



Aircraft Category	A		B		C		D	
<b>Straight - in</b>	384 (378)							
<b>Circling - in</b>	400 (394)		498 (492)		597 (591)		695 (689)	
<b>Distance (DME)</b>	4		3		2		1	
<b>Altitude (Height)</b>	1220 (1214)		930 (924)		640 (634)		350 (344)	
<b>Speed</b>	knots 90		120		150		180	
<b>Rate of descent</b>	ft / min 430		580		720		870	

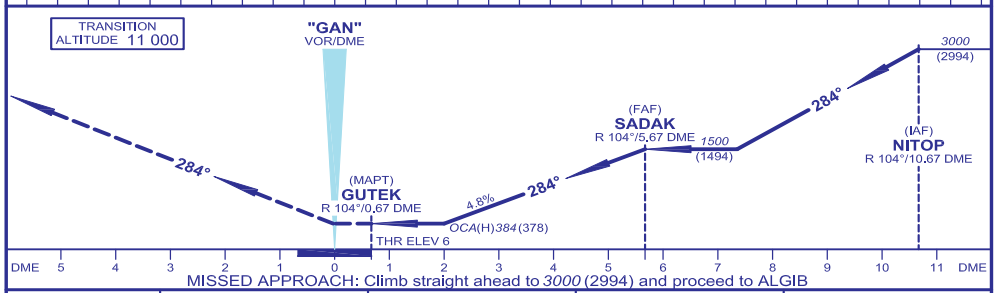
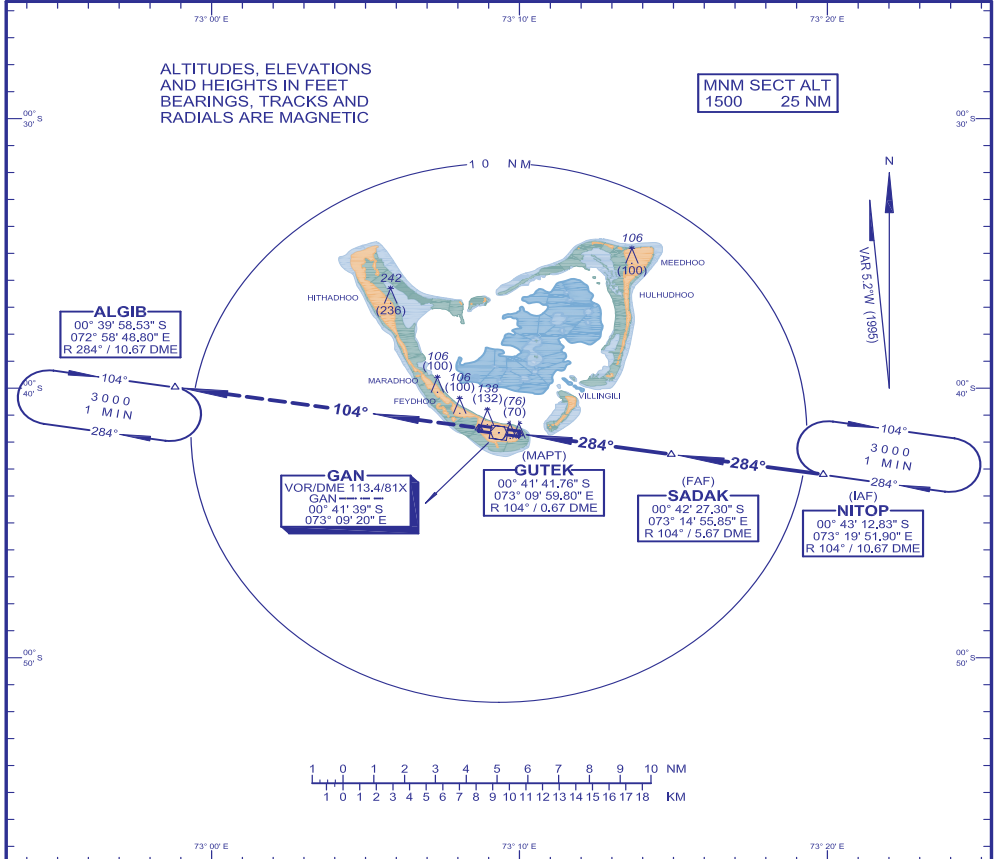
Changes: New Procedure

**INSTRUMENT  
APPROACH  
CHART - ICAO**

**ELEV 6 FT  
HEIGHTS RELATED  
TO THR ELEV - 6 FT**

**TWR 119.1**

**GAN ISLAND / GAN  
GPS, VOR/DME  
RWY 28**



Aircraft Category	A	B	C	D
Straight-in				
Circling	384 (378)			
Distance (DME)	400 (394)	498 (492)	597 (591)	695 (689)
Altitude (Height)	4	3	2	1
Speed	1220 (1214)	930 (924)	640 (634)	350 (344)
Rate of descent	knots	90	120	150
	ft / min	430	580	720
				870

Changes: New Procedure

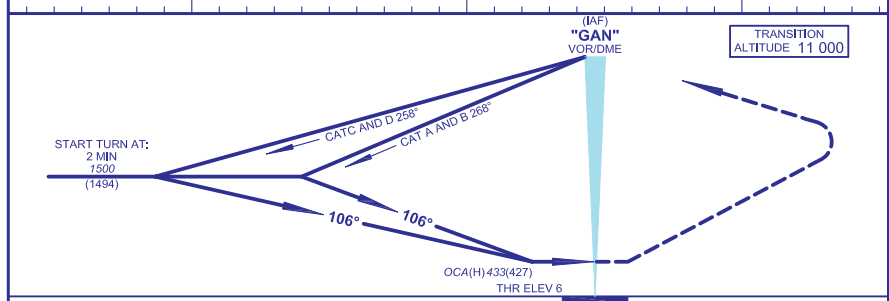
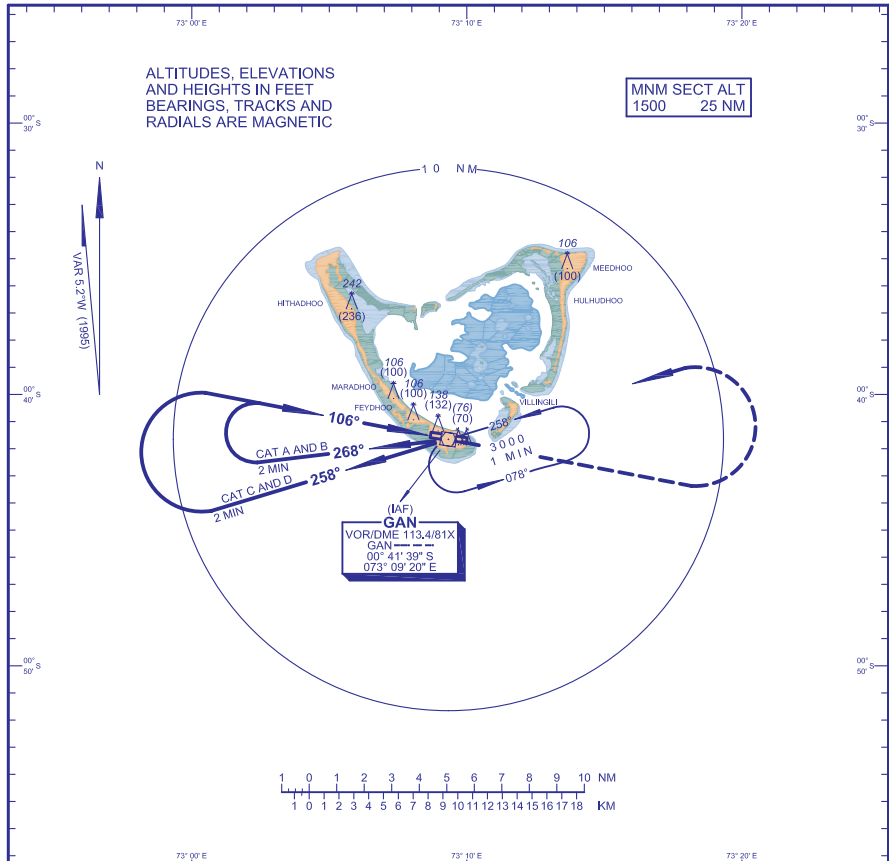


**INSTRUMENT  
APPROACH  
CHART - ICAO**

**ELEV 6 FT  
HEIGHTS RELATED  
TO THR ELEV - 6 FT**

TWR 119.1

**GAN ISLAND / GAN  
VOR  
RWY 10**



MISSED APPROACH: Climb straight ahead to 3000 (2994), on passing 2000 (1994) turn left to "GAN" VOR

Aircraft Category	A	B	C	D	
<b>Straight - in</b>	433 (427)				
<b>Circling</b>	433 (427)	498 (492)	597 (591)	695 (689)	
<b>Speed</b>	knots	90	120	150	180
<b>Rate of descent</b>	ft / min	320	430	530	640

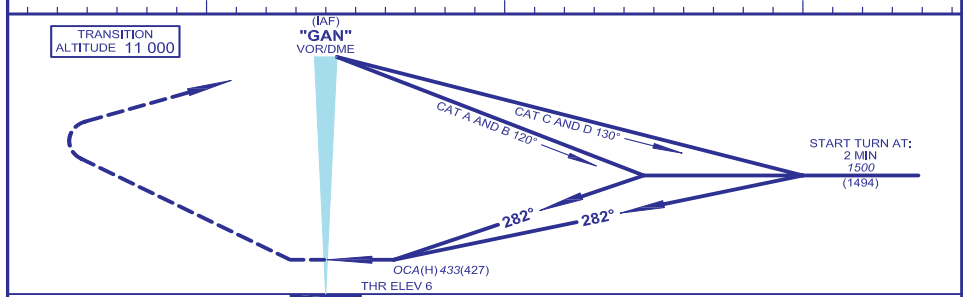
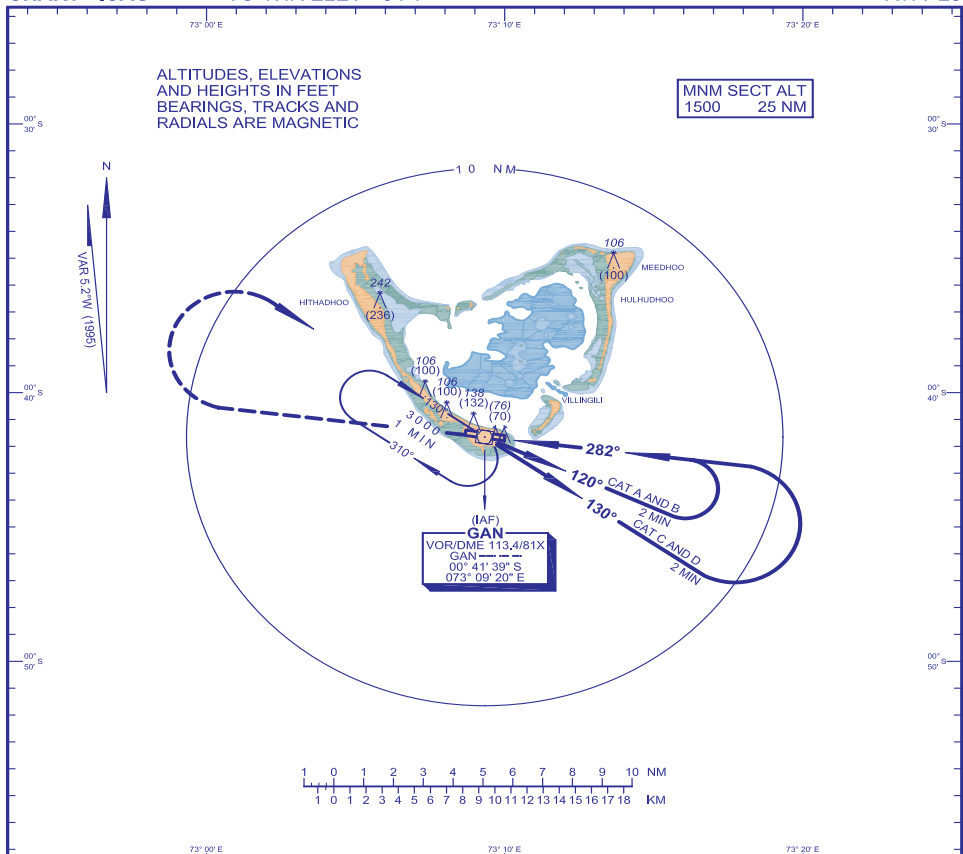
Changes: New Procedure

**INSTRUMENT  
APPROACH  
CHART - ICAO**

**ELEV 6 FT  
HEIGHTS RELATED  
TO THR ELEV - 6 FT**

**TWR 119.1**

**GAN ISLAND / GAN  
VOR  
RWY 28**



MISSED APPROACH: Climb straight ahead to 3000 (2994), on passing 2000 (1994) turn right to "GAN" VOR

Aircraft Category	A	B	C	D
Straight - in	433 (427)			
Circling	433 (427)	498 (492)	597 (591)	695 (689)
Speed	knots 90	120	150	180
Rate of descent	ft / min 320	430	530	640

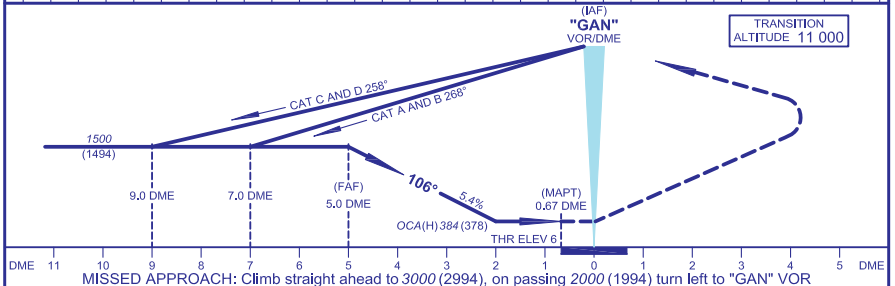
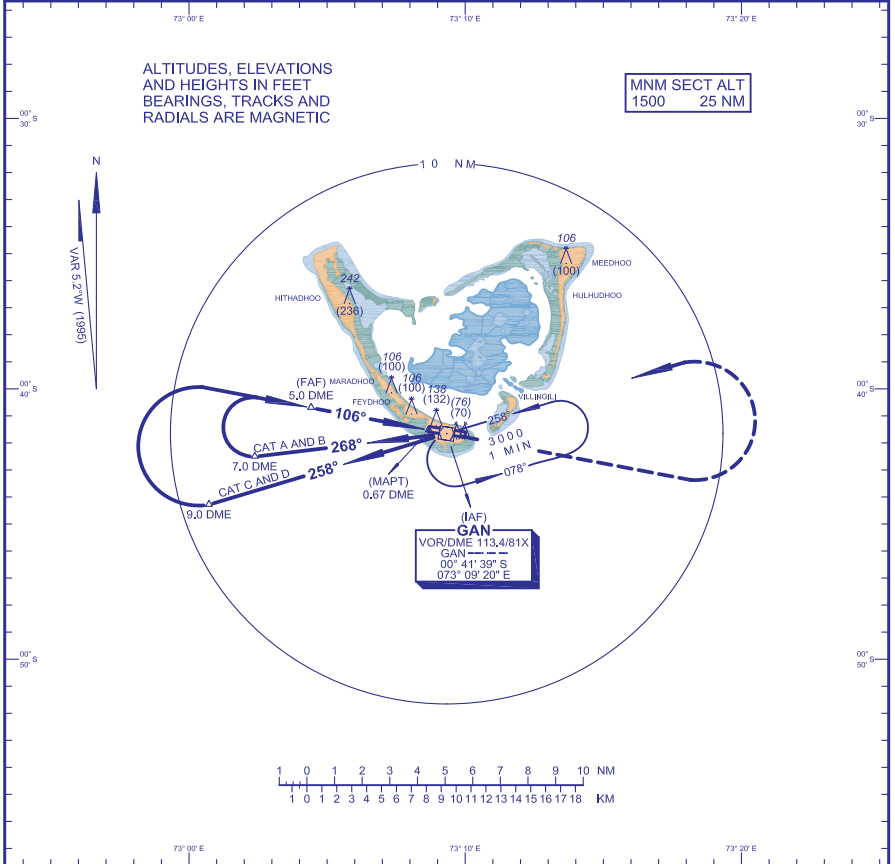
Changes: New Procedures

**INSTRUMENT  
APPROACH  
CHART - ICAO**

**ELEV 6 FT  
HEIGHTS RELATED  
TO THR ELEV - 6 FT**

**TWR 119.1**

**GAN ISLAND / GAN  
VOR/DME  
RWY 10**



Aircraft Category	A	B	C	D
<b>Straight - in</b>	384 (378)			
<b>Circling</b>	400 (394)	498 (492)	597 (591)	695 (689)
<b>Distance (DME)</b>	4	3	2	1
<b>Altitude (Height)</b>	1170 (1164)	840 (836)	510 (504)	170 (164)
<b>Speed</b>	knots 90	120	150	180
<b>Rate of descent</b>	ft / min 500	660	830	990

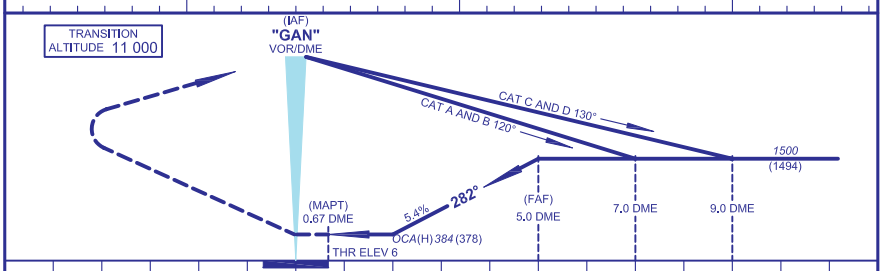
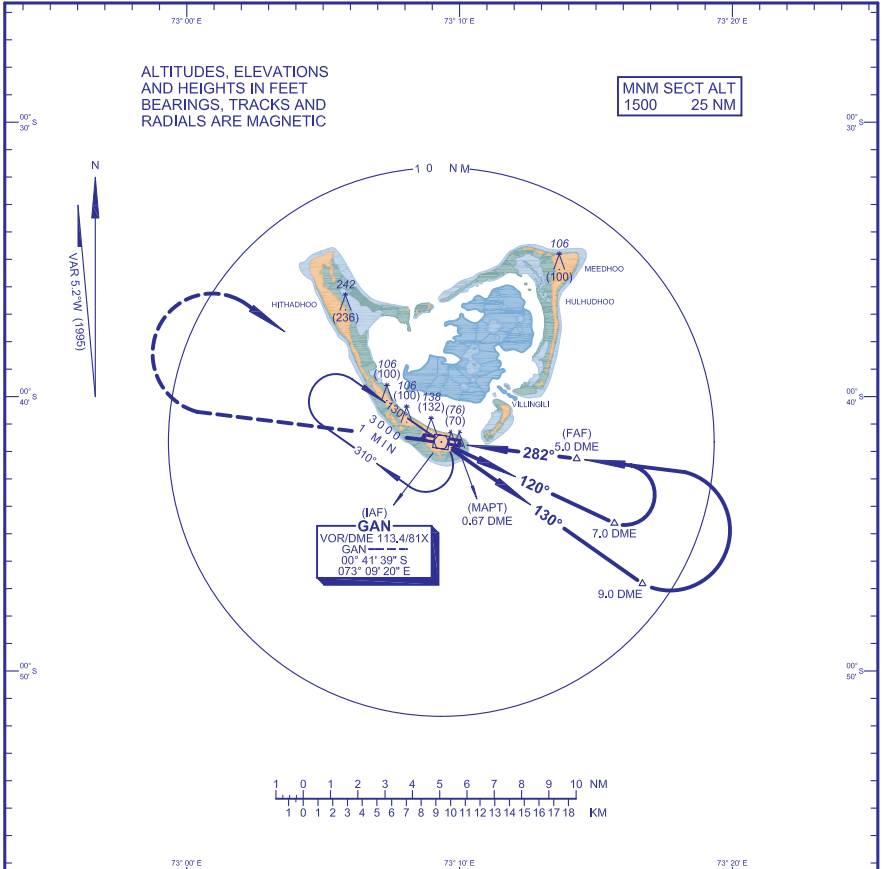
Changes: New Procedure

**INSTRUMENT  
APPROACH  
CHART - ICAO**

**ELEV 6 FT  
HEIGHTS RELATED  
TO THR ELEV - 6 FT**

**TWR 119.1**

**GAN ISLAND / GAN  
VOR/DME  
RWY 28**



MISSED APPROACH: Climb straight ahead to 3000(2994), on passing 2000(1994) turn right to "GAN" VOR

Aircraft Category	A	B	C	D
<b>Straight - In</b>		384 (378)		
<b>Climb</b>	400 (394)	498 (492)	597 (591)	695 (689)
<b>Distance (DME)</b>	4	3	2	1
<b>Altitude (Height)</b>	1170 (1164)	840 (836)	510 (504)	170 (164)
<b>Speed</b>	knots 90	120	150	180
<b>Rate of descent</b>	ft / min 500	660	830	990

Changes: New Procedure