



## **Flight Briefing Package**

**OAL6114 LGAV-LGTS**

**27 Sep 1030 UTC**

OFP #0

ATHENS/ELEFTHERIOS VENIZELOS  
(GREECE)

-

THESSALONIKI/MAKEDONIA  
(GREECE)

PREPARED BY MICHAEL IONAS

OPS@OAV.GR

27 SEP 0943 UTC

# OAL6114 LGAV-LGTS (27 Sep 1030 UTC)

RELEASE DETAILS SX-QAU LGAV-LGTS RELEASE # 1

---

FUEL PLANNING (KG)		LGAV - LGTS	
TRIP		1,905	00:38
CONT 5%		182	00:05
ALTN	LGKZ	1,076	00:21
FINAL RESV		1,092	00:30
MIN T/O		4,255	01:34
EXTRA		1	00:00
TAXI		120	00:10
RELEASE	LGAV	4,376	01:44
REMAINING	LGTS	2,291	00:51

LOAD PLANNING (KG)		PLANNED	LIMIT
PAYLOAD		16,195	
FUEL		4,376	20,820
ZERO FUEL WEIGHT	LIMIT	59,186	61,689
RAMP WEIGHT		63,562	79,100
TAKE-OFF WEIGHT		63,442	78,900
LANDING WEIGHT		61,537	66,360
UNDERLOAD		2,503	LIM ZFW

# OAL6114 LGAV-LGTS (27 Sep 1030 UTC)

OLYMPIC AIR VIRTUAL FLIGHTPLAN - IFR OAL6114 SX-QAU LGAV-LGTS

ALL WEIGHTS IN KILOGRAMS (KG)

STD 27SEP/1030Z

PREPARED 27SEP/0943Z BY MICHAEL IONAS OPS@OAV.GR

\*\*\*\*\*  
 COMMANDER: PANAGIOTIS KONSTANTINIDIS / PARK LGAV: B07 / PARK LGZA: 10  
 CONTACT DISPATCH CONTROL 131.950 20MIN BEFORE PUSHBACK (AVAILABLE 1730Z-2200Z)  
 IF NOT AVAILABLE CONTACT OC/DISPATCH - OAV TEAMSPEAK (AVAILABLE 24H)  
 \*\*\*\*\*

OAL6114 OFP 1 SX-QAU/B737-8ERW CF SEL/ELAD ROUTE: LGAVLGTS01

DEP: LGAV/ATH 03R ELEV 308 FT CRZ SPD: M.78 TTL G/C DIST: 162 NM  
 ARR: LGTS/SKG 34 ELEV 22 FT INIT ALT: FL240 TTL F/P DIST: 207 NM  
 BURN ADJ: 103.0% TTL AIR DIST: 213 NM  
 AVG WIND CMP: HD010 KT

ALT: LGKZ/KZI 32 ELEV 2059 FT 90 NM

CONFIG	DOW	PAX	CARGO	TOTAL	ULOAD LIM	ZFW	TOW	LDW
STANDARD	42991	160	1387	16195	2503 ZFW	MAX 61689	78900	66360
						PLN 59186	63442	61537
						ACT .....	.....	.....

	FUEL	CORR	ENDUR	
TRIP	1905	.....	00:38	
CONT 5%	182	.....	00:05	
ALTN LGKZ	1076	.....	00:21	
FINAL RESV	1092	.....	00:30	
MIN T/O	4255	.....	01:34	.....
EXTRA	1	.....	00:00	CAPTAINS SIGNATURE (....)
TAXI	120	.....	00:10	
RELEASE	4376	.....	01:44	I ACCEPT THIS OFP AND I AM FAMILIAR WITH THE PLANNED ROUTE AND AERODROMES

FUEL TANK CAP 20820 KG / MAX EXTRA FUEL 4823 KG LIM BY LDW  
 TRIP CORR FOR 1000 KG TOW INCR: +11 KG / 1000 KG TOW DECR: -12 KG  
 2000 FT LOWER: +26 KG / EET 00:38 CLB: 250/280/78 DES: 78/280/250

LGAV/ATH	STD 10:30	ETD 11:00	ACT OFBL .....	EST T/O 11:10	ACT T/O .....
LGTS/SKG	STA 11:20	ETA 11:53	ACT ONBL .....	EST LDG 11:48	ACT LDG .....
			TTL BLCK .....		TTL FLT .....

ATC ROUTE: N0478F240 NEVR1T NEVRA Z507 OSMOS OSM01H

## ALTERNATE PLANNING

ALTN/RWY	DIST	ALT/FL	COMP	TIME	FUEL	DIFF	ROUTE
LGKZ/32	90	FL160	HD004	00:21	1076	-	LOP03E LOPOS G12 KOGIS KOGI1C
LGKV/05R	103	FL190	TL005	00:23	1089	+13	ARNA3E ARNAS G12 PEREN ASK01X
LWSK/34	143	FL240	HD009	00:30	1407	+331	FSK3E FSK N128 RUGAS RUGA1B
LWOH/02	140	FL240	HD014	00:29	1441	+365	TSL3F TSL B1 TALAS T217 PEP PEP1

AWY	WAYPOINT NAME	MT	ALT TMP	WND/VEL FREQ	TAS GS	REM DIST	FUEL REM / USED POSITION	LEG ETO / ATO	ACC
	LGAV/03R		308				4.3 / 0.1		

## OAL6114 LGAV-LGTS (27 Sep 1030 UTC)

	ATHENS/ELEFThERI					207	N3756.6	E02357.7	...../.....
NEVR1T	KRO	077	*CLB			27		3.5 / 0.9	07 00:07
	KARISTOS			112.20		179	N3800.6	E02430.7	...../.....
NEVR1T	NEVRA	013	*CLB			11		3.3 / 1.1	02 00:09
						168	N3810.1	E02434.6	...../.....
	*TOC	352	FL240	308/024	478	6		3.2 / 1.2	01 00:10
			-25		463	162	N3816.4	E02433.1	...../.....
Z507	TUREN	352	FL240	308/024	478	9		3.1 / 1.2	01 00:11
			-25		461	153	N3826.7	E02432.3	...../.....
Z507	URUDI	352	FL240	308/024	478	11		3.1 / 1.3	01 00:12
			-25		461	142	N3837.6	E02431.4	...../.....
Z507	KERES	352	FL240	306/024	478	22		2.9 / 1.5	03 00:15
			-25		461	119	N3859.6	E02430.5	...../.....
Z507	PELAS	306	FL240	304/025	478	30		2.7 / 1.7	04 00:19
			-25		452	89	N3919.0	E02400.5	...../.....
Z507	*TOD	323	FL240	304/025	478	8		2.6 / 1.8	01 00:20
			-25		454	81	N3925.8	E02354.7	...../.....
Z507	OSMOS	323	*DES			53		2.4 / 1.9	12 00:32
						28	N4009.9	E02316.8	...../.....
OSM01H	MKR09	344	*DES			15		2.4 / 2.0	03 00:35
						13	N4024.5	E02312.6	...../.....
OSM01H	LGTS/34	301	22			13		2.4 / 2.0	03 00:38
	THESSALONIKI/MAK						N4031.6	E02258.5	...../.....

-----

# OAL6114 LGAV-LGTS (27 Sep 1030 UTC)

WIND INFORMATION - OBS 261800

-----  
(CLIMB)                      TUREN                      URUDI                      KERES  
FL230 308/023 -22    FL280 308/028 -35    FL280 308/028 -35    FL280 306/029 -35  
FL180 306/018 -11    FL260 308/026 -30    FL260 308/027 -30    FL260 306/027 -30  
FL140 306/015 -4     FL240 308/024 -25    FL240 308/024 -25    FL240 307/025 -25  
FL090 307/011 +6     FL220 308/022 -20    FL220 308/022 -21    FL220 307/022 -21  
4000 326/007 +16    FL200 307/020 -16    FL200 307/020 -16    FL200 306/020 -16

PELAS                      (DESCENT)  
FL280 304/031 -35    FL230 301/025 -23  
FL260 305/028 -30    FL180 301/018 -12  
FL240 305/026 -25    FL140 300/014 -5  
FL220 305/023 -21    FL090 300/008 +5  
FL200 304/020 -16    4000 351/002 +16

-----  
END FLIGHTPLAN OAL6114    SX-QAU    LGAV-LGTS    27SEP2013

## OAL6114 LGAV-LGTS (27 Sep 1030 UTC)

(FPL-OAL6114-IS  
-B738/M-SDE1FGHIJ1RWXYZ/LB1  
-LGAV1100  
-N0478F240 NEVRA Z507 OSMOS  
-LGTS0038 LGKZ  
-PBN/A1B1C1D1L101S1 NAV/RNVD1E2A1 DOF/130927 REG/SXQAU SEL/ELAD RVR/75  
OPR/OLYMPIC AIR VIRTUAL  
-E/0134)

**OAL6114 LGAV-LGTS (27 Sep 1030 UTC)**

WEATHER BRIEFING - GENERATED 27 SEP 2013 09:43 UTC

-----  
LGAV LGTS LGKZ LGKV LWSK LWOH

-----  
ORIGIN: LGAV/ATH (ATHENS/ELEFThERIOS VENIZELOS, GREECE)

-----  
LGAV 270920Z 06006KT 020V100 CAVOK 28/11 Q1013 NOSIG  
LGAV 270500Z 2706/2806 33008KT 9999 FEW025  
    BECMG 2710/2712 14010KT  
    BECMG 2716/2718 VRB03KT

-----  
DESTINATION: LGTS/SKG (THESSALONIKI/MAKEDONIA, GREECE)

-----  
LGTS 270920Z 30010KT 9999 FEW030 27/14 Q1012 NOSIG  
LGTS 270500Z 2706/2806 32008KT 9999 FEW030  
    BECMG 2712/2714 15012KT 9999 SCT040  
    BECMG 2720/2722 VRB03KT 9999 FEW030  
    BECMG 2804/2806 14004KT 7000 FEW010 SCT025

-----  
ALTERNATE: LGKZ/KZI (KOZANI/FILIPPOS, GREECE)

-----  
LGKZ 270920Z AUTO VRB03KT //// // // 23/05 Q1016 RE//  
[TAF NOT AVAILABLE]

-----  
ALTERNATE: LGKV/KVA (KAVALA/MEGAS ALEXANDROS, GREECE)

-----  
LGVK 270850Z 00000KT 9999 FEW018 25/18 Q1012  
LGVK 270800Z 2709/2718 20008KT 9999 FEW012 SCT080  
    PROB30 TEMPO 2710/2718 5000 SHRA FEW010 FEW018CB BKN020

-----  
ALTERNATE: LWSK/SKP (SKOPJE/ALEXANDER THE GREAT, MACEDONIA)

-----  
LWSK 270930Z VRB02KT CAVOK 23/11 Q1016 NOSIG  
LWSK 270530Z 2706/2806 36008KT 9999 FEW050 SCT090  
    TEMPO 2713/2719 SHRA FEW033CB BKN040

-----  
ALTERNATE: LWOH/OHD (OHRID/ST PAUL THE APOSTLE, MACEDONIA)

-----  
LWOH 270900Z 00000KT CAVOK 21/11 Q1017  
LWOH 270530Z 2706/2806 34008KT CAVOK  
    BECMG 2710/2712 SCT050 BKN100  
    TEMPO 2714/2719 SHRA FEW033CB BKN040

# OAL6114 LGAV-LGTS (27 Sep 1030 UTC)

NOTAM BRIEFING - GENERATED 27 SEP 2013 09:43 UTC

-----  
LGAV LGTS LGKZ LGKV LWSK LWOH  
-----

ORIGIN: LGAV/ATH (ATHENS/ELEFThERIOS VENIZELOS, GREECE)  
-----

A1641/13

KEA VOR 'KEA' 115.00MHZ ON TEST DO NOT USE. KEA DME CH97X (ID:KEA)  
NORMALLY OPERATING. 23 SEP 09:27 2013 UNTIL 30 SEP 11:30 2013. CREATED: 23 SEP  
09:30 2013

A1640/13

CONCENTRATION OF BIRDS INCLUDING  
FALCONS,BUZZARDS,STARLINGS,SWALLOWS AND OTHER SMALL PASSERINES IN  
THE VICINITY OF THE AIRPORT.  
CAUTION ADVISED. 01 OCT 00:01 2013 UNTIL 30 NOV 23:59 2013. CREATED: 23 SEP  
08:32 2013

A1307/13

REF AIP GREECE AIRAC AMDT 8-13(WEF 22 AUG 2013) AD2-LGAV-4,  
SECTION 2.12,COL 5 LINE 4,  
AMEND TO READ RWY21R END COORDINATES AS FOLLOWS:  
375517,46N0235507,99E. 22 AUG 00:01 2013 UNTIL PERM. CREATED: 31 JUL 08:47 2013

A1287/13

CONCENTRATION OF BIRDS INCLUDING FALCONS,DOVES,STORKS,  
SWALLOWS AND SWIFTS IN THE VICINITY OF THE AIRPORT.  
CAUTION ADVISED. 01 AUG 00:00 2013 UNTIL 30 SEP 23:59 2013. CREATED: 29 JUL  
09:35 2013

A1243/13

ALL GENERAL AVIATION FLIGHTS WITH MTOW MORE THAN 5700 KG SHALL  
SEND A SCHEDULE MOVEMENT ADVICE (SMA) MESSAGE TO THE AIRPORT  
SCHEDULE FACILITATOR IN A TURNAROUND FORMAT ACCORDING TO IATA  
STANDARD SCHEDULE INFORMATION MANUAL CHAPTER 6.10.  
SMA SHALL BE SENT DURING WORKING HOURS 0830-1600 LOCAL TIME VIA  
SITA FAX OR E-MAIL WITH COPIES TO SCHEDULING AND PLANNING DEPT AND  
TO AIRPORT SERVICES OPERATION CENTER (ASOC).  
CANCELLATION MESSAGES SHALL BE SENT AS SOON AS FLIGHTS WILL NOT  
OPERATE.  
ABOVE PROCEDURE DOES NOT APPLY TO HELICOPTERS VIP MEDICAL AND SAR  
FLIGHTS.  
FOR GENERAL AVIATION FLIGHTS WITH MTOW LESS THAN 5700 KG AIP GREECE  
AD2 2.20.1.2 APPLIES.  
CONTACT DETAILS :  
SCHEDULE FACILITATOR SITA:ATHHAXH,  
TEL:21035361189/190/811/813/815/816, FAX:2103537418  
E-MAIL : ESAGOS-HSCA(AT)ATHENSAIRPORT.GR  
LGAV ASOC SITA: ATHIAXH, TEL: 2103540000, FAX: 2103540095  
E-MAIL: ASOC-SENIOR-SRV(AT)AIA.GR  
LGAV SCHEDULING AND PLANNING DEPT SITA: ATHSCXH, TEL: 2103531425,  
FAX: 2103532254, E-MAIL: SCHED-PLANNING (AT) AIA.GR. 23 JUL 09:36 2013 UNTIL  
30 SEP 23:59 2013. CREATED: 23 JUL 09:39 2013

A1190/13

OBSTACLE LIGHTS ON BOYATI ATHINAI ERT RADIO MAST OUT OF SERVICE.  
OBST COORDINATES (NOT IN WGS 84) 380904N0235138E. REF AIP-GREECE ENR  
5.4-2. AND ENR 1.1.7.6. 14 JUL 12:00 2013 UNTIL 31 DEC 23:59 2013. CREATED:  
14 JUL 11:37 2013



## OAL6114 LGAV-LGTS (27 Sep 1030 UTC)

A1020/13

REF. AIP GREECE AD2-LGAV-9 PARAGR 2.20.2.1-J 20 SEP 2012  
ADD B 747-800 TO EXISTING A/C TYPES. 14 JUN 05:27 2013 UNTIL PERM. CREATED:  
14 JUN 05:33 2013

A1018/13

REF AIP GREECE AD-2-LGAV-STAR-3 28 JUN 2012, IN THE HOLDING  
PATTERN AT KRO VOR/DME, ON THE SEGMENT NEVRA-KRO VOR/DME, ON THE  
SEGMENT KEPİR-KRO VOR/DME AND ON THE SEGMENT VARIX-KRO VOR/DME,  
AMEND TO READ 7000FT INSTEAD OF 6000FT. 14 JUN 05:21 2013 UNTIL PERM. CREATED:  
14 JUN 05:25 2013

A1016/13

REF AIP GREECE, THE PROCEDURES DESCRIBED IN THE FOLLOWING PAGES  
ARE SUSPENDED.

1. AD2-LGAV-SID-2 28 JUN 2012
2. AD2-LGAV-SID-7 28 JUN 2012
3. AD2-LGAV-SID-10 28 JUN 2012
4. AD2-LGAV-SID-12 28 JUN 2012
5. AD2-LGAV-STAR-2 28 JUN 2012. 14 JUN 05:08 2013 UNTIL PERM. CREATED: 14 JUN  
05:17 2013

A0997/13

LGAV/EL VENIZELOS/INTL:AT AREA BEYOND 10NM AND ALTITUDE BELOW  
4000FT FOR ANGLES GREATER THAN 18 DEGREES FROM THE LOCALIZER CENTER  
LINE THE ILS RWY 03R (I-ATR) IS OUT OF USE DUE TO FALSE CAPTURE. 12 JUN 07:59  
2013 UNTIL PERM. CREATED: 12 JUN 08:45 2013

A0893/13

REFERENCE AIP GREECE AD2-LGAV-SID-1 28JUN 2012 ON THE DESCRIPTIONS  
OF SIDS RWY 03R:

- 1)AT THE END OF EACH DESCRIPTION OF THE SIDS  
NEVRA1J,KEPIR1J,VARIX1J,KEA1J,GENDO1J,SOREV2J,VELOP2J,ASTOV2J,NEMES3  
J,RILIN2J,PIKAD2J,RIMAX1J,ABLON2J, DELETE:SEE NOTE 1.
- 2)AT THE END OF THE DESCRIPTION OF BIBEX1J, HAND AMEND TO READ:SEE  
NOTE, INSTEAD OF:SEE NOTE 1 AND 2.
- 3)AT THE END OF DESCRIPTIONS OF SIDS RWY 03R:  
A. DELETE NOTE 1:DO NOT CLIMB ABOVE 4000FT(QNH)UNTIL REACHING  
14DME/KRO,UNLESS CLEARED BY ATC.  
B. HAND AMEND TO READ NOTE:THIS SID SHOULD BE USED FOR DESTINATION  
PAROS AIRPORT(LGPA),INSTEAD OF:NOTE 2:THIS SID SHOULD BE USED FOR  
DESTINATION PAROS AIRPORT(LGPA).
- 4.AT EACH DESCRIPTIOPN OF THE SIDS KEA1J,  
BIBEX1J,GENDO1J,SOREV2J,VELOP2J,ASTOV2J,NEMES3J,RILIN2J,PIKAD2J,  
RIMAX1J,ABLON2J, HAND AMEND TO READ:CLIMB ON RADIAL 048 SAT TO  
1100FT(QNH).AT 1100FT(QNH)TURN RIGHT,INTERCEPT AND FOLLOW RADIAL 266  
KRO TO RADIAL 266 KRO/14DME FIX NOT ABOVE 4000FT(QNH) UNLESS  
OTHERWISE INSTRUCTED BY ATC,INSTEAD OF: CLIMB ON RADIAL 048 SAT  
TO1100FT(QNH).AT 1100FT(QNH) TURN RIGHT, INTERCEPT AND FOLLOW RADIAL  
266 KRO CLIMBING TO 4000FT(QNH).MAINTAIN 4000FT(QNH) UNTIL PASSING  
14DME KRO. 27 MAY 09:48 2013 UNTIL PERM. CREATED: 27 MAY 09:53 2013

A0716/13

REFERENCE AIP GREECE AD2-LGAV:

- 1)ON AD2-LGAV-SID-1 CANCEL THE SID NEMES 3J 2)ON AD2-LGAV-SID-4  
CANCEL THE SID'S NEMES 1T AND GERMI 1T 3)ON THE AD2-LGAV-SID-5  
CANCEL THE SID NEMES 3L 4)ON THE AD2-LGAV-SID-9 CANCEL THE SID NEMES  
3G
- 5)ON THE AD2-LGAV-SID-11 CANCEL THE SID NEMES 3F. 29 APR 07:33 2013 UNTIL PERM.  
CREATED: 29 APR 07:35 2013

## OAL6114 LGAV-LGTS (27 Sep 1030 UTC)

A0518/13

REF AIP GREECE PART 3 AD2-LGAV-2.21.1.3 RUNWAY USE SYSTEM  
ADDITIONAL HOURS OF LGAV - NOISE ABATMENT PROCEDURES AS FOLLOW :  
31 MAR TILL 27 OCT 2013 DAILY 12:00-15:00. 31 MAR 02:00 2013 UNTIL 27 OCT 02:00  
2013. CREATED: 29 MAR 04:55 2013

A0103/12

ELEFThERIOS VENIZELOS AIRPORT HAS BEEN APPROVED BY HCAA TO BE USED  
BY B747-800 AIRCRAFT AS ALTERNATE OR FOR A LIMITED NUMBER OF FLIGHTS.  
THE EXISTING ILS PROCEDURES HAVE BEEN DESIGNED TAKING INTO  
CONSIDERATION THE COLLISION RISK MODEL. 24 JAN 08:19 2012 UNTIL PERM. CREATED:  
24 JAN 08:40 2012

-----  
DESTINATION: LGTS/SKG (THESSALONIKI/MAKEDONIA, GREECE)  
-----

A1485/13

THESSALONIKI/MAKEDONIA/INTL:LIGHTS OF SIGNIFICANT LIGHTED  
OBSTACLES IN THE VCY OF MAKEDONIA AP (AS LISTED IN ITEM 40 AND 41 OF  
AIP GREECE AD 2 LGTS 2.23.3 AND ON TERMINAL AREA CHART-VFR ROUTES  
MAKEDONIA TMA) 3KM WEST OF THE AP U/S (RADIO BROADCASTING AERIALS AT  
PERAIA). 31 AUG 08:41 2013 UNTIL 31 DEC 23:59 2013. CREATED: 31 AUG 08:42 2013

A1484/13

LGTS AVGAS 100LL NOT AVAILABLE. 31 AUG 07:30 2013 UNTIL 31 DEC 23:59 2013.  
CREATED:  
31 AUG 08:40 2013

A1329/13

LGTS:PART OF RWY 16/34 BETWEEN 1800 METERS AND 1950 METERS FROM  
THRESHOLD OF RWY 16 MAY BE SLIPPERY WHEN WET. 05 AUG 09:20 2013 UNTIL 31 DEC  
07:30 2013. CREATED: 05 AUG 09:45 2013

A1177/13

REF AIP GREECE AD.2-LGTS-SID-1 ON SECOND PAGE OF AD2-LGTS-SID-1  
SECTION GENERAL PARAGRAPH 3,AMEND TO READ PDG (PROCEDURE DESING  
GRADIENT) 7.6 PER CENT(462FT/NM) INSTEAD OF 6.0 PER CENT (365FT/NM). 10 JUL  
07:31 2013 UNTIL PERM. CREATED: 10 JUL 07:39 2013

A1116/13

TWY LINK J AND PART OF TWY F FROM HOLDING POINT RWY10 TO TWY A  
CLOSED DUE WIP. 01 JUL 18:00 2013 UNTIL 31 DEC 23:59 2013. CREATED: 01 JUL 18:04  
2013

A1105/13

LIGHTING OF TWY F PART BETWEEN TWY A TO THE HOLDING POINT OF RWY  
28 OPERATES EVERY SECOND LAMP. 29 JUN 08:31 2013 UNTIL 31 DEC 06:30 2013.  
CREATED:  
29 JUN 08:39 2013

A0755/13

FISKA VOR FSK 116.4MHZ OUT OF SERVICE. 10 MAY 07:33 2013 UNTIL 31 DEC 12:00  
2013.  
CREATED: 10 MAY 07:38 2013

A0754/13

THESSALONIKI/ MAKEDONIA ILS/DME RWY10 (IMAK) 109.5MHZ/CH32X OUT  
OF SERVICE. 10 MAY 07:28 2013 UNTIL 31 DEC 12:00 2013. CREATED: 10 MAY 07:32  
2013

## OAL6114 LGAV-LGTS (27 Sep 1030 UTC)

A0747/13

REF AIP GREECE,AD2-LGTS-ADC HAND AMEND TO INCLUDE TWO(2) HOT SPOTS WITH RELATED TEXT AS FOLLOWS:

- 1.HS1 INTERSECTION OF RWYS:INTERSECTING RWYS WITH NEITHER SIGNAGE NOR MARKING TO WARN AGAINST ENTRY TO RWY.
  - 2.HS2 INTERSECTION OF TWYS F,E AND L:WIDE OPENING.
- WHERE APPLICABLE MAKE SURE OF CORRECT TURN FROM APRON TO TWY F BEFORE RWY 10/28. 08 MAY 06:00 2013 UNTIL PERM. CREATED: 08 MAY 06:14 2013

A0173/13

RWY 10/28 AND TLINKS F1 AND F2 CLOSED DUE TO WIP.  
PART OF RWY 10/28 FROM TLINK N TO TWY A IS AVAILABLE ONLY FOR A/C TAXIING. 01 FEB 15:34 2013 UNTIL 30 SEP 12:30 2013. CREATED: 01 FEB 15:35 2013

A1584/12

CAUTION ADVISED ON TWY A DUE TO PAVEMENT DEFORMATION LYING APPROXIMATELY 160M FROM HOLDING POINT OF RWY 34,EAST OF THE TWY CENTERLINE. 09 OCT 08:00 2012 UNTIL 30 SEP 12:00 2013. CREATED: 09 OCT 08:59 2012

A1582/08

THE USE OF THE FOLLOWING SIDS IS SUSPENDED:

- 1.ALIKO 1B (REF AIP GREECE VOLII PAGE LGTS 15, 08 JUL 2004/3)
- 2.ALIKO 1A (REF AIP GREECE VOLII PAGE LGTS 17, 08 JUL 2004/3)
- 3.ALIKO 1C (REF AIP GREECE VOLII PAGE LGTS 18, 08 JUL 2004/3)
- 4.ALIKO 1E (REF AIP GREECE VOLII PAGE LGTS 20, 08 JUL 2004/3. 07 AUG 09:28 2008 UNTIL PERM. CREATED: 07 AUG 07:38 2008

A1581/08

THE USE OF THE FOLLOWING STARS IS SUSPENDED:

- 1.FSK 1F, ODIKO 1L (REF AIP GREECE VOLII PAGE LGTS 10, 08 JUL 2004/3)
- 2.FSK 1F, ODIKO 1F (REF AIP GREECE VOLII PAGE LGTS 11, 08 JUL 2004/3)
- 3.FSK 3P, ODIKO 1P (REF AIP GREECE VOLII PAGE LGTS 12, 08 JUL 2004/3)
- 4.FSK 3H, ODIKO 1H (REF AIP GREECE VOLII PAGE LGTS 13, 08 JUL 2004/3)
- 5.FSK 3D, ODIKO 1D (REF AIP GREECE VOLII PAGE LGTS 14, 08 JUL 2004/3. 07 AUG 09:26 2008 UNTIL PERM. CREATED: 07 AUG 07:37 2008

M0256/13

REF MAIP GREECE VOL-2B EFF 01 JUN 2013 THE USE OF THE FOLLOWING SIDS IS SUSPENDED:

- 1.ALIKO 1C ON PAGE T-2-18
- 2.ALIKO 1B ON PAGE T-2-21
- 3.ALIKO 1E ON PAGE T-2-25
- 4.ALIKO 1A ON PAGE T-2-27. 04 JUN 08:00 2013 UNTIL PERM. CREATED: 04 JUN 08:42 2013

M0633/12

REF MAIP GREECE VOL-2B EFF 01 DEC 2012 THE USE OF THE FOLLOWING STARS IS SUSPENDED:

- 1.FSK 3D,ODIKO 1D ON PAGE T-2-2
- 2.FSK 1F,ODIKO 1F ON PAGE T-2-3
- 3.FSK 1F,ODIKO 1L ON PAGE T-2-4
- 4.FSK 3H,ODIKO 1H ON PAGE T-2-5
- 5.FSK 3P,ODIKO 1P ON PAGE T-2-6. 05 DEC 06:24 2012 UNTIL PERM. CREATED: 05 DEC 07:08 2012

-----  
ALTERNATE: LGKZ/KZI (KOZANI/FILIPPOS, GREECE)  
-----

# OAL6114 LGAV-LGTS (27 Sep 1030 UTC)

D0167/13

LGKZ/KOZANI:AERODROME HOURS OF SERVICE AS FLW:

FROM 13/09/2013 TILL 26/10/2013

MON 1030-1530  
TUE,SAT 0530-1030  
WED CLOSED  
THU 0500-1000  
FRI 1230-1700  
SUN 1030-1500

## NOTES:

- 1.ON 13/09 FRI 1130-1630
- 2.ON 14/09 SAT 0530-1000
- 3.ON 15/09 SUN 1200-1700. 13 SEP 07:32 2013 UNTIL 26 OCT 23:59 2013. CREATED: 13 SEP 07:40 2013

-----  
ALTERNATE: LGKV/KVA (KAVALA/MEGAS ALEXANDROS, GREECE)  
-----

B0531/13

LGKV/MEGAS ALEXANDROS:AERODROME HOURS OF SERVICE AS FLW:

FROM 20/06/2013 TILL 26/10/2013

MON,TUE,WED,THU,FRI 0330-1715  
SAT 0530-1115 1800-1900  
SUN 0545-1230 1600-1715

## NOTES:

- 1.ON 21/06 FRI 0330-1800
- 2.ON 22/06 SAT 0530-1900
- 3.ON 23/6 SUN 0545-1715
- 4.FROM 29/6 TILL 03/8 SAT 0530-1115 1630-1900
- 5.FROM 10/8 TILL 24/8 SAT 0530-1115 1500-1900. 18 JUN 07:20 2013 UNTIL 26 OCT 23:59 2013. CREATED: 18 JUN 07:23 2013

B0453/13

MIL FLTS FOR FIRE FIGHTING PURPOSE WILL TAKE PLACE WITHIN AREA 5NM  
RAD 405450N0243711E. KAVALA/MEGAS ALEXANDROS TMA/CTR/ATZ AFFECTED.  
ALL ACFT SHALL FILE FPLS AND CONTACT APPROPRIATE ATS UNIT. 0000FT AMSL -  
03000FT  
AMSL, DAILY SR-SS, 14 JUN 03:05 2013 UNTIL 31 OCT 14:25 2013. CREATED: 29 MAY  
11:52 2013

B0385/13

CONCENTRATION OF BIRDS (INCLUDING GULLS,STORKS,FALCONS,SWALLOWS,BEE  
EATERS,ROOKS,CROWS,SWIFTS) IN THE AIRPORT VICINITY.  
CAUTION ADVISED. 08 MAY 14:39 2013 UNTIL 15 OCT 20:59 2013. CREATED: 08 MAY  
14:40 2013

B0251/13

ALL GENERAL AVIATION AND TRAINING FLIGHTS MUST REQUEST PRIOR  
APPROVAL FROM KAVALA AIRPORT AUTHORITIES AT LEAST 24 HOURS BEFORE  
THE ESTIMATED TIME OF ARRIVAL TO LGKV DUE TO INCREASED AIR TRAFFIC  
WORKLOAD. PRIOR COORDINATION WITH AIRPORT AUTHORITIES ON TEL  
+302591053404 OR BY E-MAIL:D18IC AT HCAA.GR. 01 APR 05:17 2013 UNTIL 26 OCT  
21:00 2013. CREATED: 01 APR 05:21 2013

M0394/13

ARRESTING GEAR (HOOK) RWY 05R CONNECTED 1709FT FROM THRESHOLD RWY

**OAL6114 LGAV-LGTS (27 Sep 1030 UTC)**

05R EVERY DAY EXCEPT WEEKENDS AND HOLIDAYS. WEEKEND BEGINS FRI 11:30  
TILL MON 04:00 UTC. FOR ANY EXCEPTION PRIOR NOTICE IS REQUIRED.  
ARRESTING GEAR (HOOK) RWY 23L UNSERVICEABLE UNTIL FURTHER NOTICE. 19 SEP 09:27  
2013 UNTIL 26 OCT 21:59 2013. CREATED: 19 SEP 10:10 2013

M0280/13

KAVALA/MEGAS ALEXANDROS TACAN KRP CH90X OPERATIONAL BUT WITHOUT  
BACKUP STATION. 28 JUN 05:58 2013 UNTIL 31 DEC 23:59 2013. CREATED: 28 JUN 06:06  
2013

M0161/11

LGKV ARRESTING BARRIERS (NETS) OF RWYS 23R AND 05R COMPLETELY  
WITHDRAWN.  
REF AIP AGA 2-6-4 KAI 2-6-5, MAIP SUPPLEMENT VOL-1 PAGE K-4-1  
MAIP VOL-2 PAGE K-5-1 MAIP VOL-3 PAGE D-37.-. 04 APR 11:55 2011 UNTIL PERM.  
CREATED: 04 APR 12:01 2011

-----  
ALTERNATE: LWSK/SKP (SKOPJE/ALEXANDER THE GREAT, MACEDONIA)  
-----

A0233/13

ANSP M-NAV FLIGHT AUTHORIZATION CENTRE HOURS OF OPERATION ARE  
FROM  
0530-2130. 16 SEP 12:03 2013 UNTIL 26 OCT 21:30 2013. CREATED: 16 SEP 12:04  
2013

A0218/13

FLOCKING BIRDS IN THE VICINITY AND ON THE AERODROME. CAUTION  
ADVISED. 28 AUG 11:05 2013 UNTIL 28 OCT 11:00 2013. CREATED: 28 AUG 11:05 2013

A0458/02

HAND AMENDMENT IN AIRAC AIP AMDT 23, EFFECTIVE DATE 23.JAN.2003, CHANGE OF NAVAID  
STATION NAME: FROM SKOPJE VORDME 111.45 SIN, TO SINKO VORDME 111.45 SIN. REF  
LWSK AD 2.24-7, LWSK AD 2.24-15 AND LWSK AD 2.24-17. 23 JAN 00:00 2003 UNTIL  
PERM. CREATED: 12 DEC 13:56 2002

A0055/02

HAND AMANDMENT PLEASE CORRECT THE CORDINATES FOR VOR/DME 'SIN' IN AIP MACEDONIA.  
CORRECT CORDINATES ARE: 415851N0222156E PAGES AFFECTED: ENR 4.1-1 AD LWSK 2.24-7  
AD LWSK 2.24-15 AD LWSK 2.24-17. 29 JAN 09:00 2002 UNTIL PERM. CREATED: 29 JAN  
09:01 2002

A0024/02

STANDARD INSTRUMENT DEPARTURE (SID) SINKO1C CHANGED 1. NEW IDENTIFICATION: SIN1C  
2. RWY 16 3. DESCRIPTION OF PROCEDURE: SIN ONE CHARLIE DEPARTURE. CLIMB GRADIENT  
4.4@ (270FT/NM) UNTIL REACHING 3500FT. CLIMB STRAIGHT AHEAD. AT 7.4D SKJ TURN  
LEFT ONTO COURSE 006. AFTER CROSSING R108 SKJ VOR/DME TURN RIGHT ONTO COURSE  
054. INTERCEPT AND FOLLOW R083 SKJ VOR/DME NOT BELLOW 8000FT CLIMBING TO SIN  
VOR/DME. NOTE: WHEN USING SIN1C FOR RAXAD NEXT, ARRANGE FLIGHT TO BE RAXAD AT  
FL160 OR ABOVE. IF NOT ABLE ADVISE ATC. 4. BEARINGS ARE MAGNETIC, ALT IN FT,  
DISTANCE IN NM. REF AIP LWSK AD 2.24-15. 24 JAN 00:00 2002 UNTIL PERM. CREATED:  
11 JAN 12:24 2002

A0023/02

STANDARD INSTRUMENT ARRIVAL (STAR) SINKO1B CHANGED 1. NEW IDENTIFICATION: SIN1B  
2. DESCRIPTION OF PROCEDURE: FROM SIN VOR/DME FOLLOW R263 SIN TO SKJ VOR/DME.  
MNM SAFE ALT FOR SEGMENT SIN VOR/DME-25D SKJ: 8000FT MNM SAFE ALT FOR SEGMENT  
25D SKJ-SKJ VOR/DME: 6000FT DISTANCE SIN VOR/DME-SKJ VOR/DME: 33NM REF AIP LWSK  
AD 2.24-7. 24 JAN 00:00 2002 UNTIL PERM. CREATED: 11 JAN 12:22 2002

**OAL6114 LGAV-LGTS (27 Sep 1030 UTC)**

ALTERNATE: LWOH/OHD (OHRID/ST PAUL THE APOSTLE, MACEDONIA)

A0240/13

TECHNICAL DEPARTMENT HOURS OF OPERATION ARE :

DAY                    OPENING HOURS

1	0600-1400
2	0600-1400
3	0600-1400
4	0600-1400
5	0600-1400
6	0600-1400
7	0600-1400. 16 SEP 12:48 2013 UNTIL 26 OCT 14:00 2013. CREATED: 16 SEP 12:49 2013

A0239/13

AERODROME CONTROL TOWER (TWR) HOURS OF OPERATION ARE :

DAY                    OPENING HOURS

1	0600-1400
2	0600-1400
3	0600-1400
4	0600-1400
5	0600-1400
6	0600-1400
7	0600-1400

OPERATING OUT OF THE AERODROM CONTROL TOWER TWR)WORKING HOURS CAN BE PERFORMED ONLY WITH PRIOR PERMISSION OBTAINED VIA AFTN ADDRESS LWOHPZX. 16 SEP 12:42 2013 UNTIL 26 OCT 14:00 2013. CREATED: 16 SEP 12:43 2013

A0238/13

ATS REPORTING OFFICE HOURS OF OPERATION ARE :

DAY                    OPENING HOURS

1	0600-1400
2	0600-1400
3	0600-1400
4	0600-1400
5	0600-1400
6	0600-1400
7	0600-1400

OPERATING OUT OF THE ATS REPORTING OFFICE WORKING HOURS CAN BE PERFORMED ONLY WITH PRIOR PERMISSION OBTAINED VIA AFTN ADDRESS LWOHPZX. 16 SEP 12:37 2013 UNTIL 26 OCT 14:00 2013. CREATED: 16 SEP 12:38 2013

A0231/13

METEOROLOGICAL OBSERVATION SERVICE HOURS OF OPERATION ARE :

DAY                    OPENING HOURS

1	0600-1400
2	0600-1400
3	0600-1400
4	0600-1400

## OAL6114 LGAV-LGTS (27 Sep 1030 UTC)

5 0600-1400  
6 0600-1400  
7 0600-1400

OPERATIONS OUT OF AERODROME WORKING HOURS CAN PERFORMED ONLY WITH PRIOR PERMISSION OBTAINED VIA AFTN ADDRESS LWOHYMYX. 16 SEP 11:48 2013 UNTIL 26 OCT 14:00 2013. CREATED: 16 SEP 11:49 2013

A0230/13

APPROACH CONTROL SERVICE (APP) HOURS OF OPERATION ARE :

DAY OPENING HOURS

1 0600-1400  
2 0600-1400  
3 0600-1400  
4 0600-1400  
5 0600-1400  
6 0600-1400  
7 0600-1400

OPERATIONS OUT OF AERODROME WORKING HOURS CAN PERFORMED ONLY WITH PRIOR PERMISSION OBTAINED VIA AFTN ADDRESS LWOHZPZX. 16 SEP 11:42 2013 UNTIL 26 OCT 14:00 2013. CREATED: 16 SEP 11:43 2013

A0226/13

HOURS OF SERVICE OF AD ST.PAUL THE APOSTLE-OHRID ARE NOW:

DAY OPENING HOURS

1 0600-1400  
2 0600-1400  
3 0600-1400  
4 0600-1400  
5 0600-1400  
6 0600-1400  
7 0600-1400

OPERATING OUT OF THE AERODROME OPERATIONAL HOURS CAN BE PERFORMED ONLY ON REQUEST, WITH PRIOR GRANT (CONFIRMATION) OBTAINED FROM THE AIRPORT AUTHORITIES ACCORDING TO THE AVAILABLE AIRPORT FACILITIES, REQUIRED FROM THE AIRCRAFT OPERATOR VIA ONE OF THE NEXT WAYS:

SITA: OHDAPXH

FAX: +38946252840

E-MAIL: OPS(AT)TAV.AERO

DUTYOHD(AT)TAV.AERO. 16 SEP 06:00 2013 UNTIL 26 OCT 14:00 2013.

CREATED: 11 SEP 21:58 2013

A0118/12

HAND AMENDMENT

REF AIP MACEDONIA LWOH AD 2.24-27 AERODROME OBSTRUCTION CHART,  
PLEASE AMEND TO READ 2548 X 45 ASPHALT,  
INSTEAD OF 2550 X 43,80 ASPHALT. 20 APR 08:31 2012 UNTIL PERM. CREATED: 20 APR 08:32 2012

A0117/12

HAND AMANDMENT

REF AIP MACEDONIA LWOH AD 2.24-25 AERODROME OBSTACLE CHART,  
PLEASE AMEND TO READ 2548 X 45 ASPHALT,

## OAL6114 LGAV-LGTS (27 Sep 1030 UTC)

INSTEAD OF 2550 X 43,80 ASPHALT)

DUPE. 20 APR 08:20 2012 UNTIL PERM. CREATED: 20 APR 08:22 2012

A0286/04

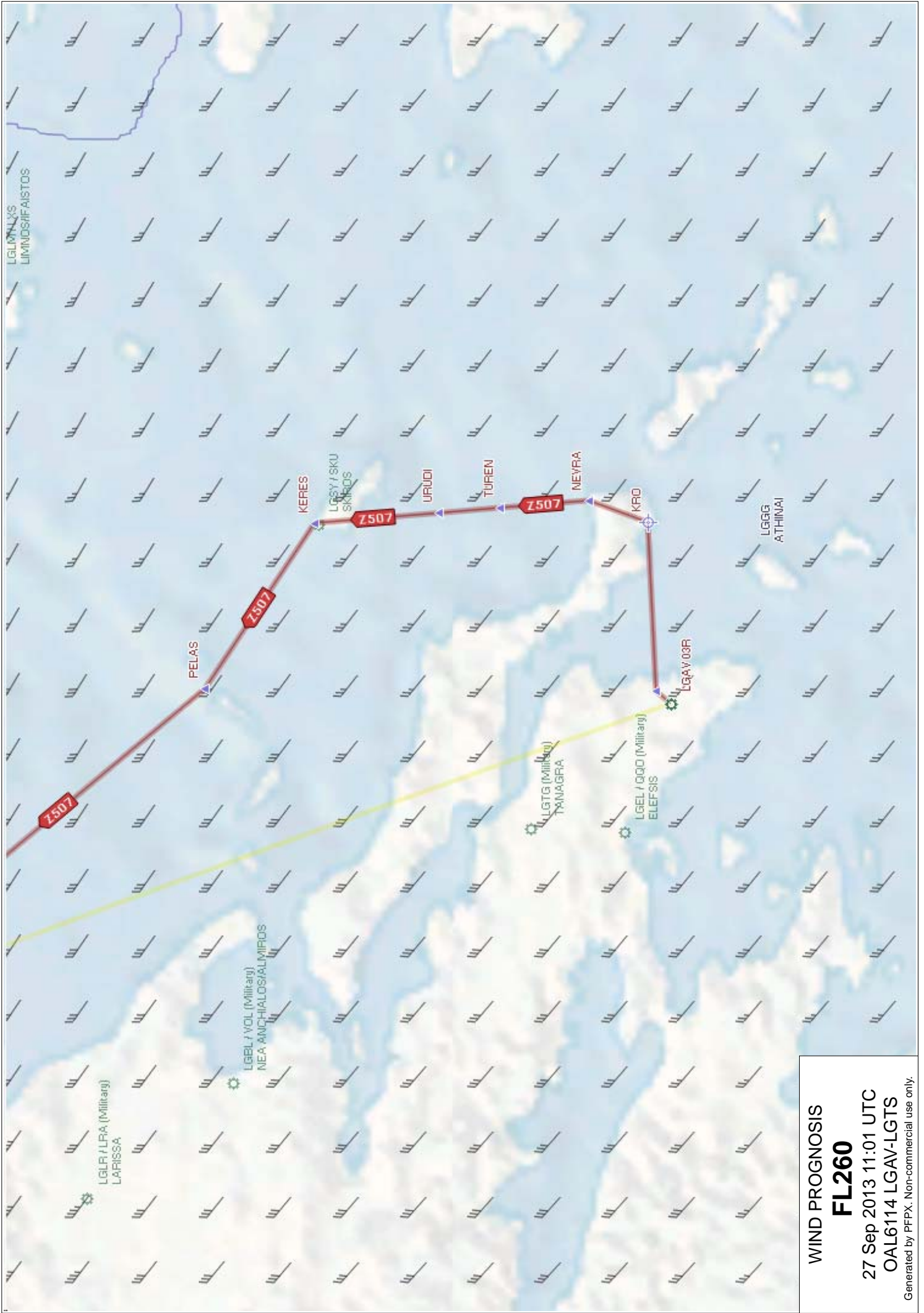
HAND AMMENDMENT CHANGE THE COORDINATES OF THE OHRID ARP THE NEW COORDINATES ARE:  
411047.72N 0204432.38E PAGES AFFECTED: LWOH AD 2.24-3 LWOH AD 2.24-5. 30 SEP  
00:01 2004 UNTIL PERM. CREATED: 29 SEP 12:16 2004

A0285/04

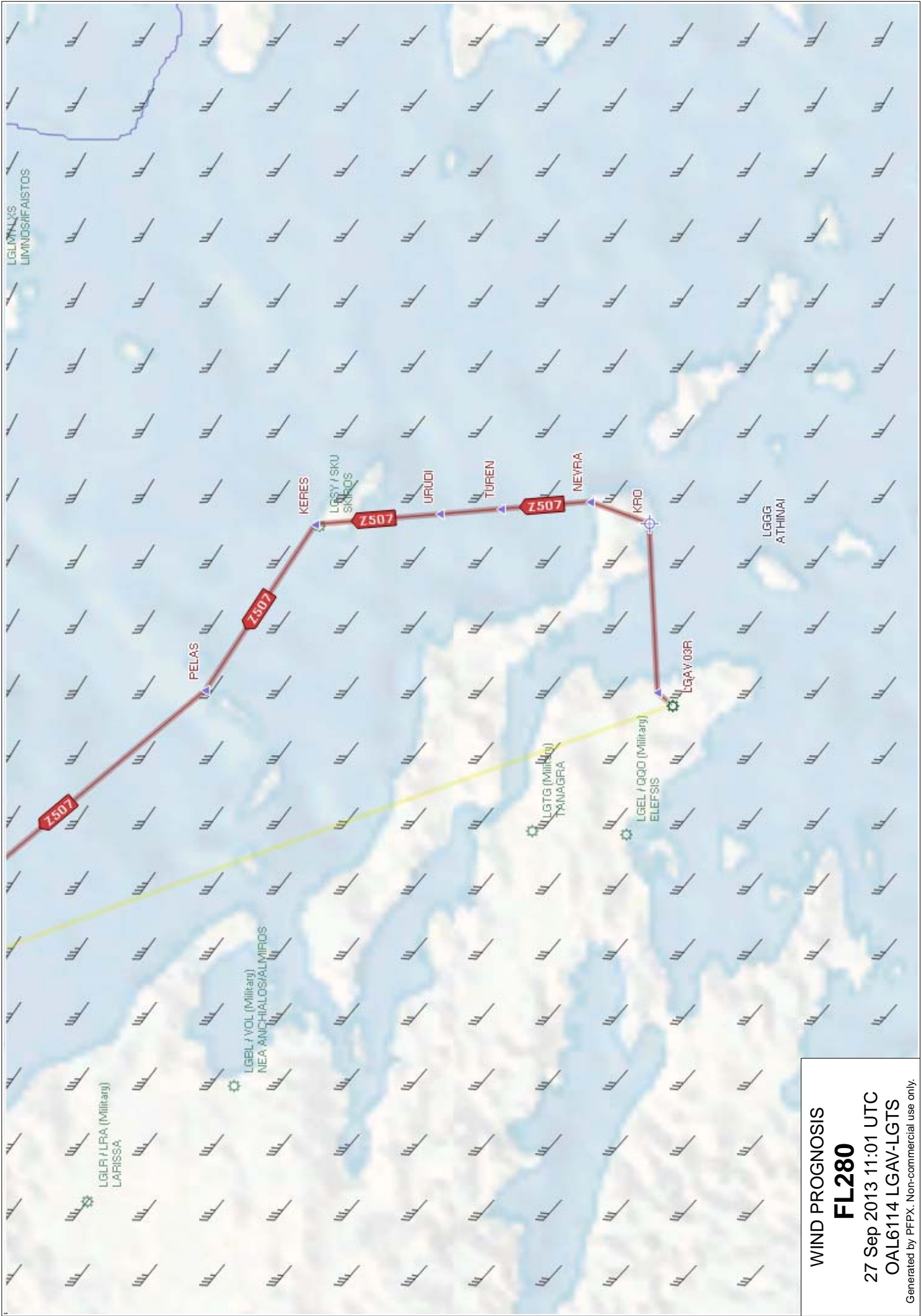
HAND AMMENDMENT CHANGE THE COORDINATES OF THE DVOR/DME 'OHR' THE NEW COORDINATES  
ARE: 411021N 0204411E PAGES AFFECTED: LWOH AD 2.24-7 LWOH AD 2.24-17 LWOH AD  
2.24-19 LWOH AD 2.24-21 LWOH AD 2.24-23. 30 SEP 00:01 2004 UNTIL PERM. CREATED:  
29 SEP 12:04 2004



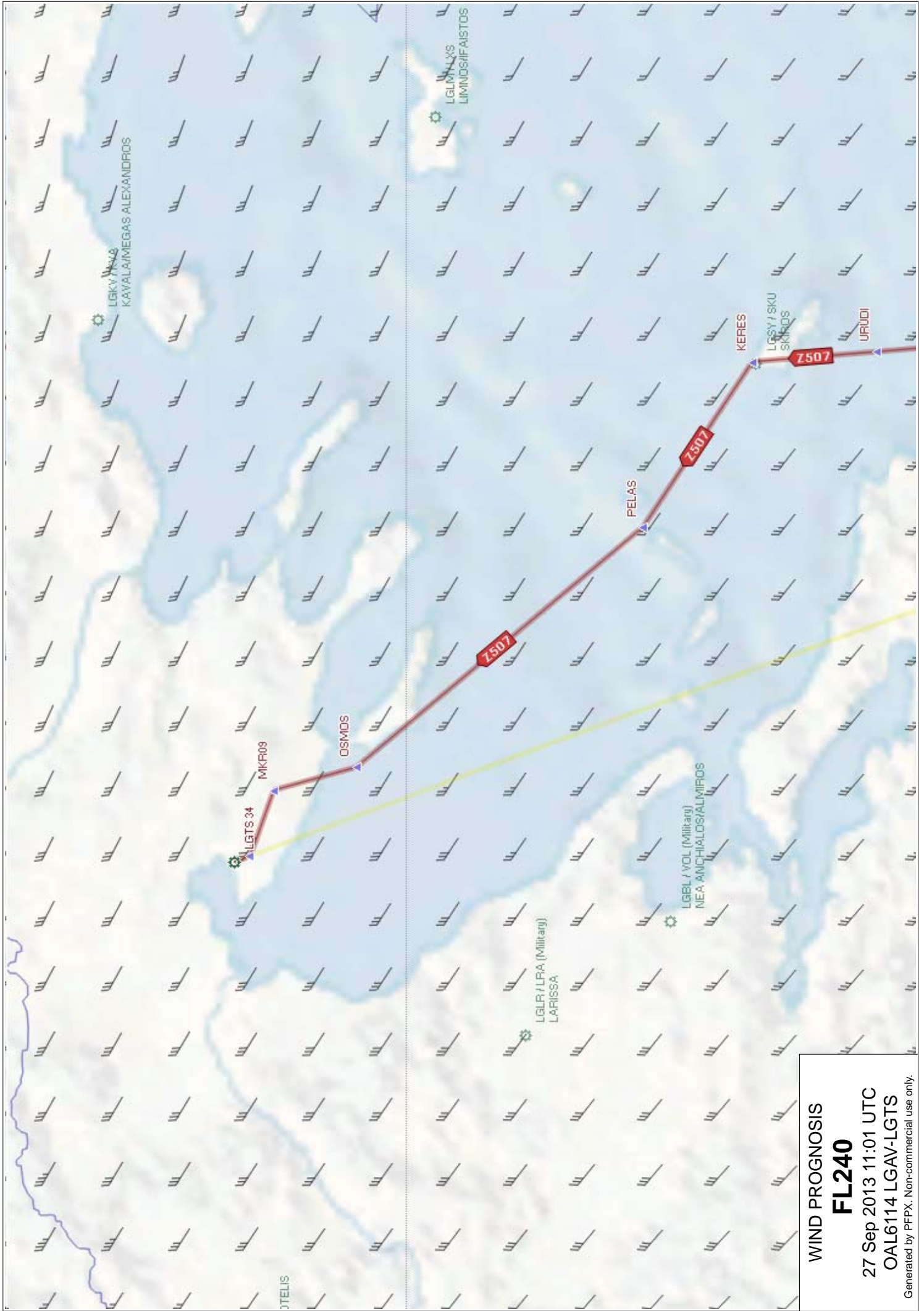




WIND PROGNOSIS  
**FL260**  
 27 Sep 2013 11:01 UTC  
 OAL6114 LGAV-LGTS  
 Generated by PFPX. Non-commercial use only.

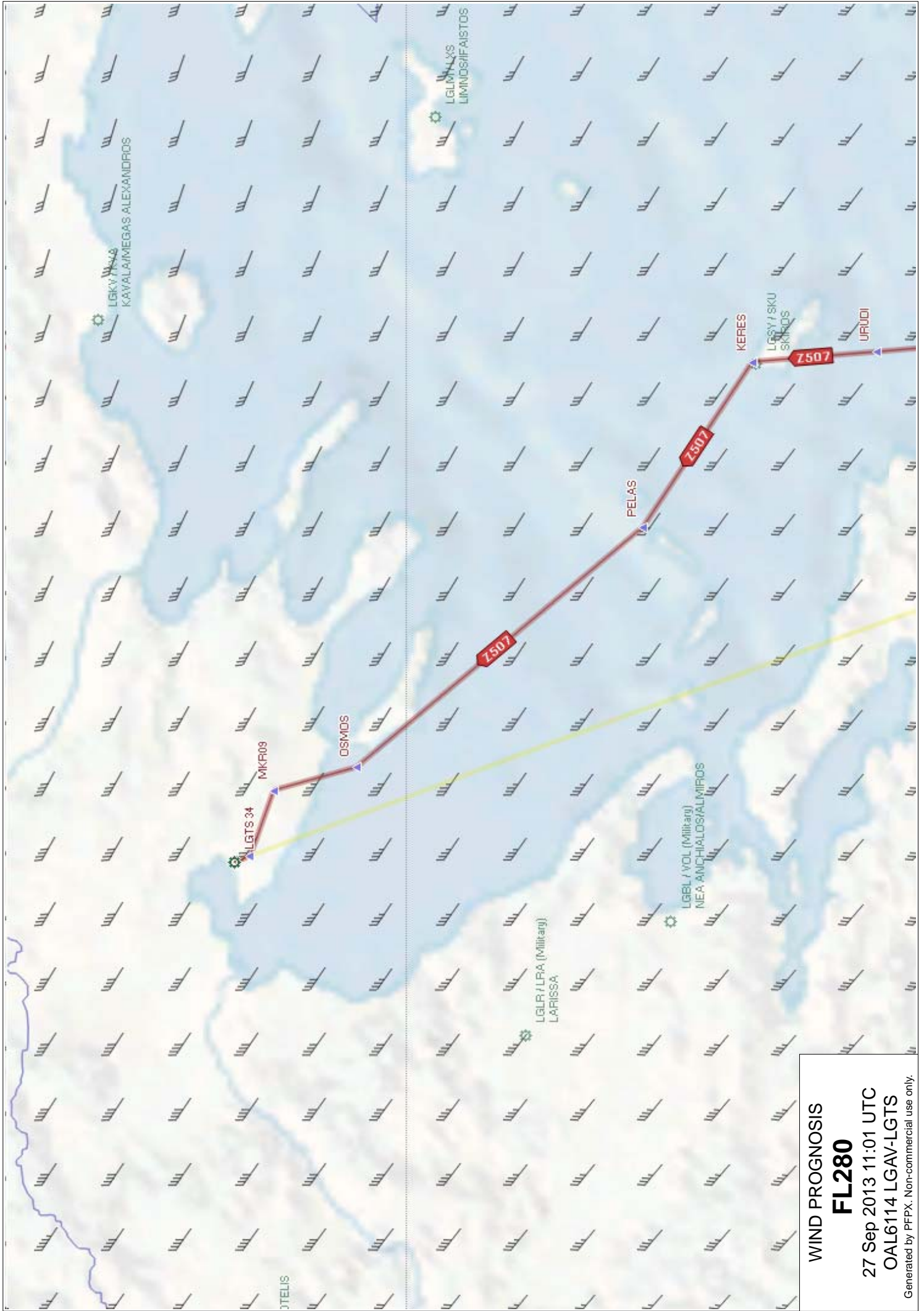


WIND PROGNOSIS  
**FL280**  
 27 Sep 2013 11:01 UTC  
 OAL6114 LGAV-LGTS  
 Generated by PFPX. Non-commercial use only.



**WIND PROGNOSIS**  
**FL240**  
 27 Sep 2013 11:01 UTC  
 OAL6114 LGAV-LGTS  
 Generated by PFPX. Non-commercial use only.





**WIND PROGNOSIS**  
**FL280**  
 27 Sep 2013 11:01 UTC  
 OAL6114 LGAV-LGTS  
 Generated by PFPX. Non-commercial use only.

PGDE14 EGRR 261200

ISSUED BY WAFC LONDON  
PROVIDED BY WAFC LONDON  
FIXED TIME PROGNOSTIC CHART  
ICAO AREA EURO SIGWX  
FL 100-450  
VALID 12 UTC 27 SEP 2013

CB IMPLIES TS, GR  
MOD OR SEV TURB AND ICE

UNITS USED: HEIGHTS IN FLIGHT LEVELS  
CHECK SIGMET, ADVISORIES FOR  
TC AND VA, AND ASHTAM AND  
NOTAM FOR VA

CAT AREAS

- 1 ~ 340  
230
- 2 ~ 390  
280
- 3 ~ 400  
290

