



EGAD, NEWTOWNARDS AIRPORT VISITING AIRCRAFT GUIDE

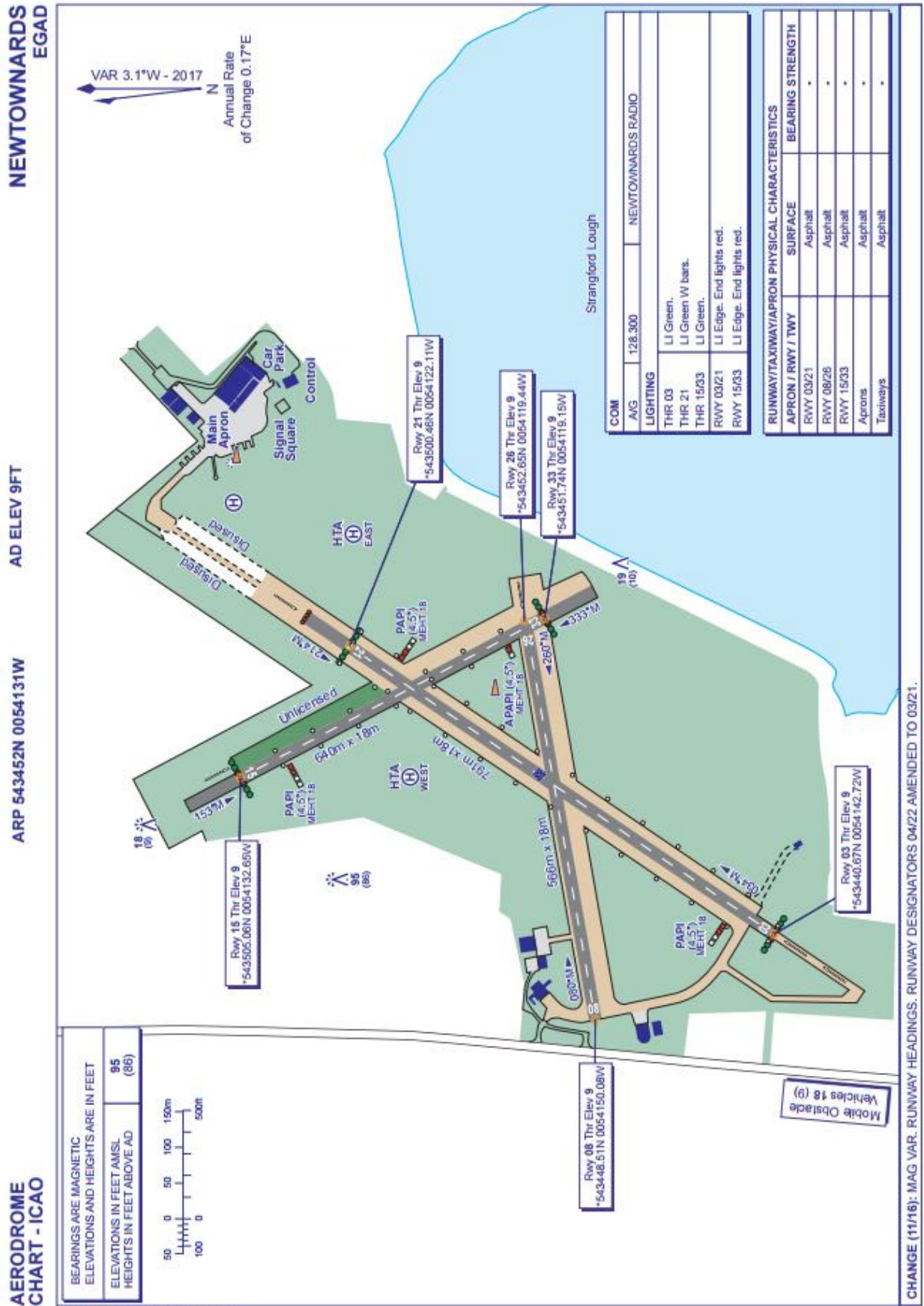
Local Chart

NOT TO BE USED FOR NAVIGATION



Airport Chart

13 Oct 2016



AERO INFO DATE 01 AUG 16

Airfield Information

- All circuit traffic is left hand except RW03 which is right hand.
- Standard circuit height is 1000ft agl and aerodrome elevation is 9ft.
- Please avoid overflying Castle Espie bird sanctuary. (185° at 3nm from EGAD)
- Standard overhead join recommended at 2000ft agl if possible.

Runway Information

Runway	PAPI	LIGHTS	TODA	LDA
03	4.5°	Yes	747m	791m
08	-	-	566m	Unlicensed
15	4.5°	Yes	594m	530m
21	4.5°	Yes	791m	717m
26	-	-	Unlicensed	566m
33	4.5°	Yes	586m	564m
15 Grass	-	0	Unlicensed	Unlicensed

Remarks / Warnings

Approaches to Runway 26 & 33 are directly over a sea wall which may be obstructed by persons and vehicles

15 Approach / 33 Climb out, Police station mast to the east of the centreline (153ft)

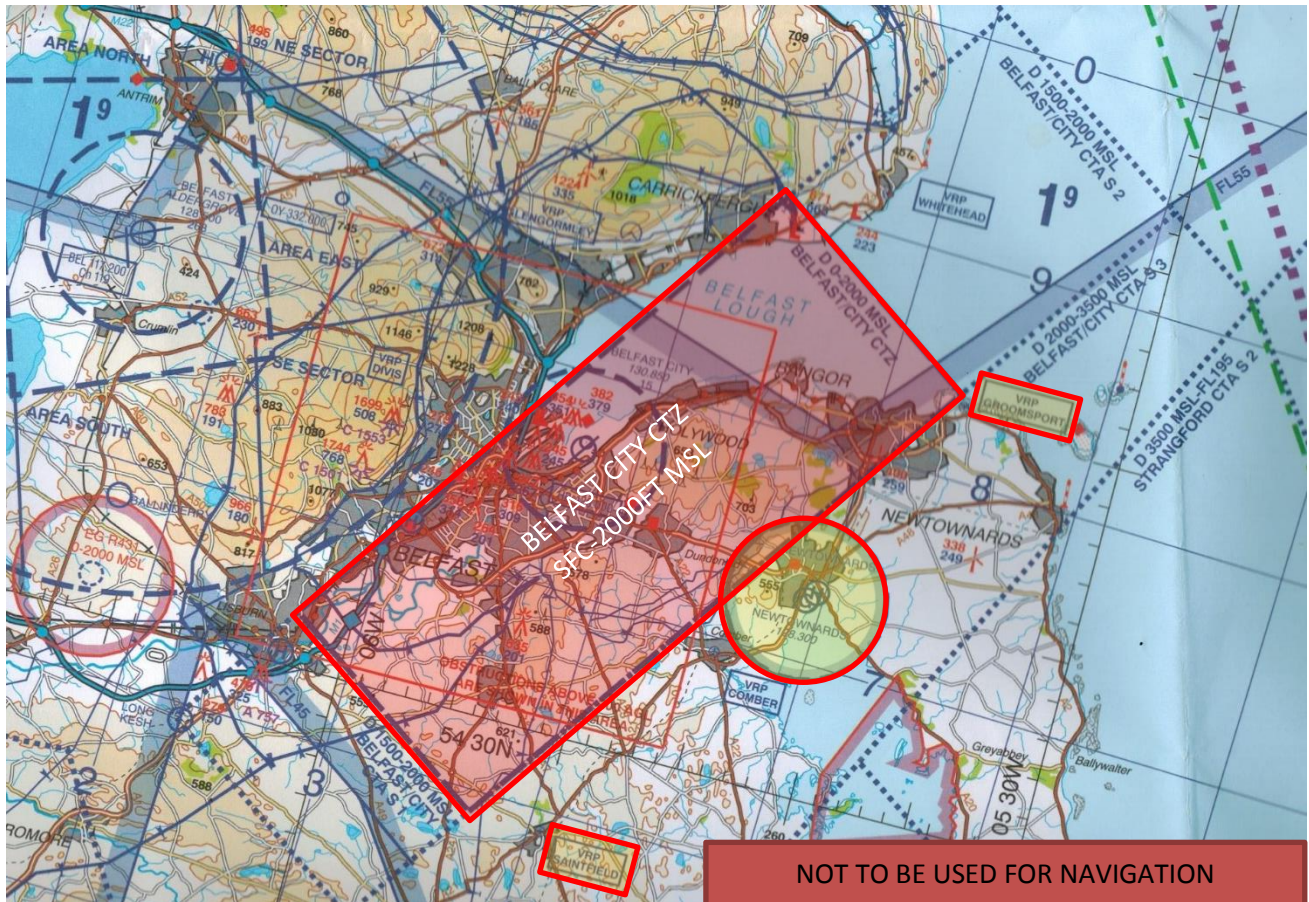
Air Traffic Services Information

- An Air/Ground service on frequency 128.300. Callsign 'Newtownards Radio'
- Belfast Approach on frequency 130.850. Callsign 'Belfast Approach'

Diversion Airfields

- **EGAC, Belfast City** (289° at 6.7nm) **NO AVGAS AVAILABLE**
 - RW04/22 - 1829 x45m, equipped with ILS both ends
- **EGAA, Aldergrove** (284° at 10nm)
 - RW07/25 - 2780 x45m, equipped with VOR 07 & ILS 25
 - RW17/35 – 1891x45m, equipped with ILS 17 & VOR 35
 - Aircraft Maintenance available

Arrival & Departure Procedures



Arrivals

- Aircraft arriving from the **east / south** will be able to route directly to the airfield below 2000ft.
- Aircraft arriving from **west / north** will have to coordinate with Aldergrove Radar 128.500 and Belfast Approach 130.850.
- Inbound traffic to Newtownards will be speaking to Belfast Approach on 130.850. Belfast will ask pilots to free call (QSY) Newtownards Radio.

Departures

- Aircraft departing to the **north** are recommended to use Groomsport VRP
- Aircraft departing to the **west** are recommended to use Saintfield VRP
- Aircraft departing to the **east / south** can plan a direct routing below 2000ft.
- After departure please contact Belfast Approach on 130.850
- Usually Belfast Approach will hand aircraft to Aldergrove Radar for northwest flights through Aldergrove zone but it is the pilot's responsibility to ensure that clearances are received for both zone transits.

General Aviation Report

- The 'Prevention of Terrorism Act' requires that all flights to & from Northern Ireland, The Isle of Man and the Channel Islands shall take place between 'Designated Airports' unless notification has been given in advance to the Chief Constable of the Police Force responsible for the airport.
- Newtownards Airport is **NOT** a designated airport and therefore notification must be given. The normal minimum period of advance notice is 12 hours as outlined in the footnote to the GAR form.
- Submit a GAR to the NCU by fax to 0870 240 3738 or email to **ncu@hmrc.gsi.gov.uk** and to the PSNI by fax to 028 9090 1242 or email to **GAR@psni.pnn.police.uk**.
- A GAR must also be submitted to **XYZ@revenue.ie** if travelling from/to the Republic of Ireland and to the **local airport small ports unit** if travelling from/to the United Kingdom, Isle of Man or Channel islands.

Fuel

- JET A1
- AVGAS 100LL
- MOGAS (Offsite)

Fire Category

- Special Category / Cat 1

Flight Planning

- Flight plans will no longer be accepted by FAX, PHONE OR EMAIL due to new electronic system.
- Flight plans can only sent by AFPEX, skydemon or rocketroute and must be addressed to EGACZTX.
- Flight plans can be activated in the air by Belfast Approach 130.850.

PPR Required

- PPR is required for ALL visiting aircraft. Please request through our website or call the office.
- ALL Aircraft using Newtownards Aerodrome are to carry third party liability insurance cover meeting or exceeding the appropriate European Directive requirements.

Airport Fees 2017

Landing		Parking (Subject to availability)		Extras (per hour)	
£7.00	Microlight	£10.00	Outside – Single / Microlight	FREE	Camping overnight
£18.00	Single under 2500kgs	£20.00	Outside- Twin	£10.00	Runway Lighting
£40.00	Twin under 2500kgs	£25.00	Inside – Single / Microlight	£15.00	Out of Hours - Clubhouse
£60.00	Aircraft 2500-5000kgs	£40.00	Inside – Twin	£20.00	Out of Hours – Fuelling
£95.00	Aircraft over 5000kgs	£75.00	Aircraft over 2500kgs	£30.00	Out of Hours – RFFS

Prices only valid from June 2017 and are subject to change without notice. Please check website for up to date prices

There will be a £10 admin charge on all fees that are not paid on day of arrival / departure

Facilities Available

- Fuel
- Parking
- Hangarage
- Maintenance
- Runway Lighting
- Internet
- Flight Planning
- Telephone
- Picnic Area
- Lounge
- Toilets
- Car Hire
- Public Transport
- Café / Restaurant on site
- Local Restaurants
- Local Shops
- Local Hospital
- Local Accommodation

Accommodation



Distance : 1.3 miles **Telephone :** 028 9181 4141 **Website :** www.strangfordhotel.com
Room Rate : From £45.00 **Facilities :** Restaurant, Bar, Free Car Parking, Packed Lunch, Laundry

Transport

- Bus Service **9 & 10** pass the airfield around every 30 minutes towards Belfast & Portaferry. **Portaferry** bound buses will pass Mountstewart, Greyabbey, Ballywalter, Kircubbin & Portavogie. **Belfast** bound buses pass Newtownards & Dundonald. You can also connect at Newtownards bus station to Bangor, Comber, Donaghadee, & Millisle. Fares & Timetables are available from www.translink.co.uk
- Castlebawn taxis are located in Newtownards. Telephone: 028 9182 7222
- Car Hire is available from SIXT who are 0.4 miles away. Telephone: 028 9181 2525

Local Shops & Restaurants

On Site	Cloud 9 Restaurant	(0900-1700 Daily)
0.5 miles	Tesco Superstore	(Mon-Sat 24hr & Sun 1300-1800)
0.5 miles	Burger King	
0.9 miles	Town Centre	(Various shops & restaurants)
1.5 miles	Ards Shopping Centre	(Various shops & restaurants)

Local Attractions

0.9 miles	Newtownards
4.2 miles	Mount Stewart Gardens
3.5 miles	Scrabo Forest & Country Park
5.2 miles	Bangor
11 miles	Belfast

Contacts

- Club Office fly@ulsterflyingclub.com 028 9181 3327
All enquires including PPR
- Aerodrome Manager manager@ulsterflyingclub.com 028 9181 3327
- Belfast City ATC bca@nats.co.uk 028 9093 5122
- Belfast City ATIS 028 9093 5124
- Aldergrove ATC 028 9442 2152
- Met Office 028 9442 2339