

**WELCOME TO**

**KAVALA "LYDIA" AERODROME**

**VISITOR'S PILOT BRIEFING**



Intentionally left blank

## Contents

1. General .....	4
2. The Aerodrome .....	4
3. Airspace.....	5
4. Limitations .....	5
5. VFR Procedures.....	6
5.1. VFR Procedures when LGKV is operational. ....	6
5.1.1. VFR Arrival Procedures .....	6
5.1.1.1. Approaching from North:.....	6
5.1.1.2. Approaching from West, South and East: .....	11
5.1.2. VFR DEPARTURE PROCEDURES .....	19
5.2. VFR Procedures when LGKV is closed.....	21
5.3. Traffic Patterns .....	22
5.4. Notes .....	23
6. IFR Procedures .....	24
7. Helicopters Procedures .....	25
8. Night Procedures.....	25

## 1. General

Kavala "Lydia" Aerodrome LGKM is a General Aviation aerodrome situated 3.3 NM north-west from Kavala city centre.

Operator of the aerodrome is Egnatia Aerodromes, division of Egnatia Aviation Ltd.

LGKM is operational 7 days per week. The operating hours are notified by NOTAM and are also available at the LGKM web-site at [www.lgkm.aero](http://www.lgkm.aero). In extraordinary cases the aerodrome may be operated ad-hoc upon request.

LGKM is a private aerodrome, and a Prior Permission is Required (PPR). Please submit your PPR at [www.lgkm.aero/PPR](http://www.lgkm.aero/PPR). Please note that by submitting your PPR you are **kindly requested to follow** either during your visit to the aerodrome or just by passing through the ATZ of the aerodrome. As flight safety is our outmost priority, prior to your visit, please ensure that you have the latest version of this briefing. **Only the latest version** is available on the LGKM website.

## 2. The Aerodrome

The aerodrome's coordinates are 40° 58' 22" N, 24° 20' 30" E. It is equipped with an asphalt Runway (RWY13/31) 1,330m x 28m, navigation lights, a taxiway system, and an apron ready to welcome 28 light aircraft. LGKM elevation is 60.70m (199.15 ft).

The aerodrome does not have a dedicated helipad, however, helicopters are welcome to visit.

LGKM's details and aerodrome charts ADC & APDC are published in the AIP Greece under

*AIP ► Part 3 AERODROMES (AD) ► AD 1.6 DIRECTORY of Category B Aerodromes and Water Aerodromes ► AD 1.6.12 KAVALA/AMYGDALEON - LYDIA.*

You may have access to the AIP Greece using this link, <https://aisgr.hcaa.gr/>. Please ensure that you are using the current AIP version. Also visit AIP Greece, LGKV information for VFR Routes around LGKM.

*AIP ► Part 3 AERODROMES (AD) ► AD 2 AERODROMES ► AD 2 LGKV ► AD2-LGKV-VFR*

LGKM is a **Day and Night VFR** approved Aerodrome.

### 3. Airspace

LGKM ATZ is a G classed airspace, and it is adjacent to KAVALA CTR and TMA as shown in AD2 LGKV VFR charts (see par. 2). KAVALA CTR and TMA are Class D airspace when LGKV is operational. LGKV opening hours are announced by NOTAM. When LGKV is closed, CTR and TMA areas are Class G airspace except the Airways passing through the TMA which are Class E airspace. Please follow the relevant to the airspace Visual Flying Rules as described in AIP Greece Enroute ENR 1.2.

IFR flight into or out of LGKM may be performed on a Y or Z flight plan respectively. Please see IFR Flights Briefing for more details.

### 4. Limitations

**LGKM is currently a national aerodrome.** This means that flight from or to any international destination, are not permitted. If you wish to visit LGKM from abroad or fly from LGKM abroad, you will be required to pass through a dedicated entry/exit point aerodrome. Such aerodromes in the region are Alexandroupolis Airport (LGAL) to the east – northeast, Ioannina Airport (LGIO) to the west – north west, Kavala International Airport (LGKV), Iraklion Airport (LGIR) to the south and many more. Please contact our Duty Airside Officers or the aerodrome administrations for more information.

LGKM is a General Aviation aerodrome for light aircraft. Therefore, **Air transport flight such as Scheduled or Charter flight, Air-taxi, cargo or mail flights are not permitted.** However, holders of Air Operators Certificate may fly to LGKM for maintenance purposes on a ferry flight (no passengers or cargo) only. Aircraft using LGKM **may not exceed a MTOW of 5.700kg (12.500 lbs).**

**A maximum of two persons on board** are allowed in any inbound and/or outbound flights. **Training** flights may expand this number to **three persons on board** provided that the third person is company personnel, student, flight observer or examiner. The above POB include crew and flight companions.

Only aircraft equipped with 8,33MHz spacing communication radio are accepted at LGKM

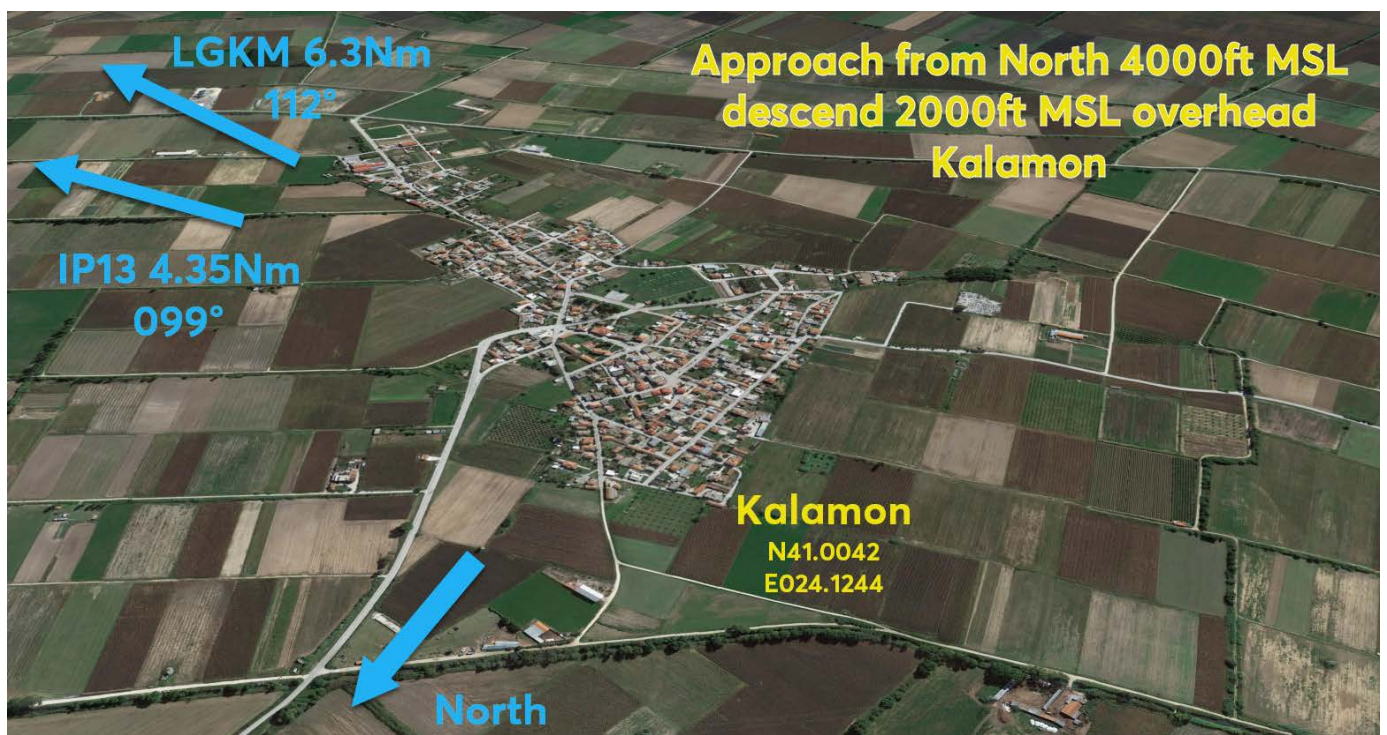
### 5. VFR Procedures

#### 5.1. VFR Procedures when LGKV is operational.

##### 5.1.1. VFR Arrival Procedures

##### 5.1.1.1. Approaching from North:

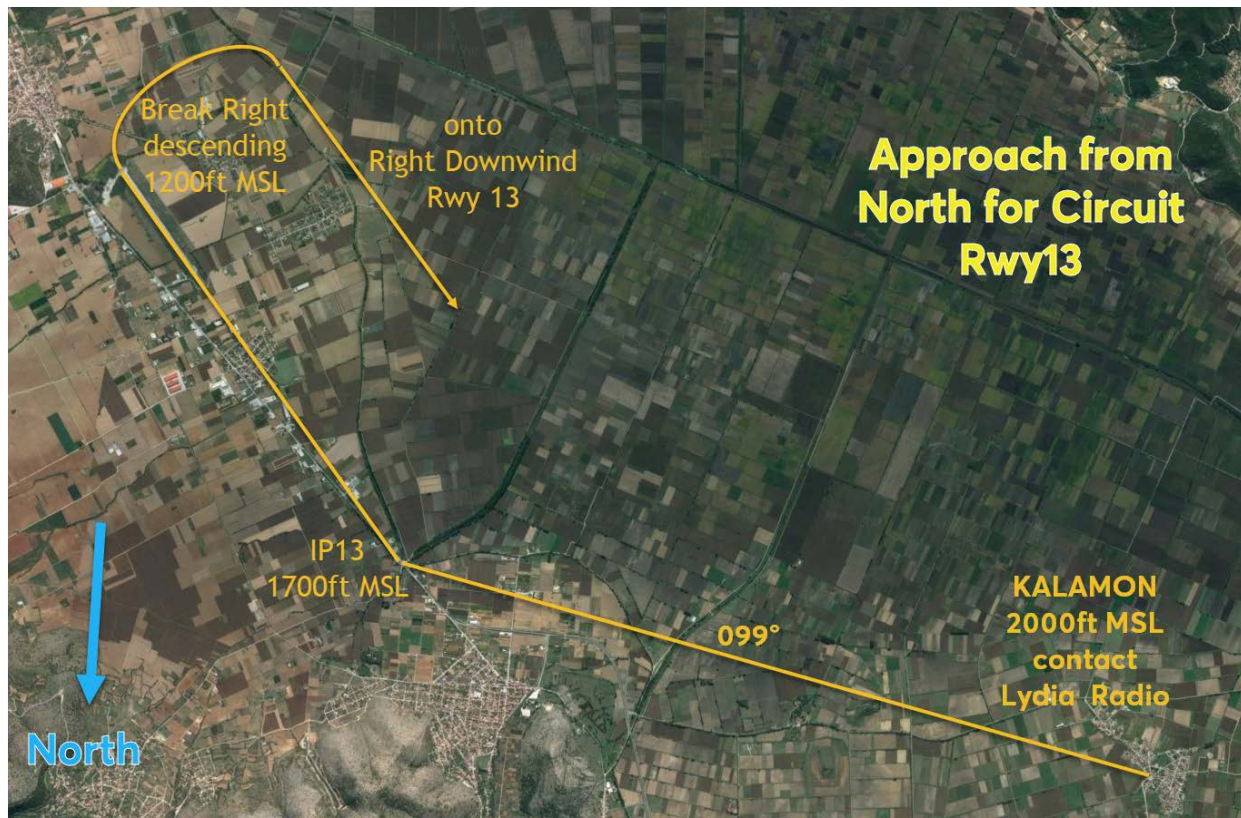
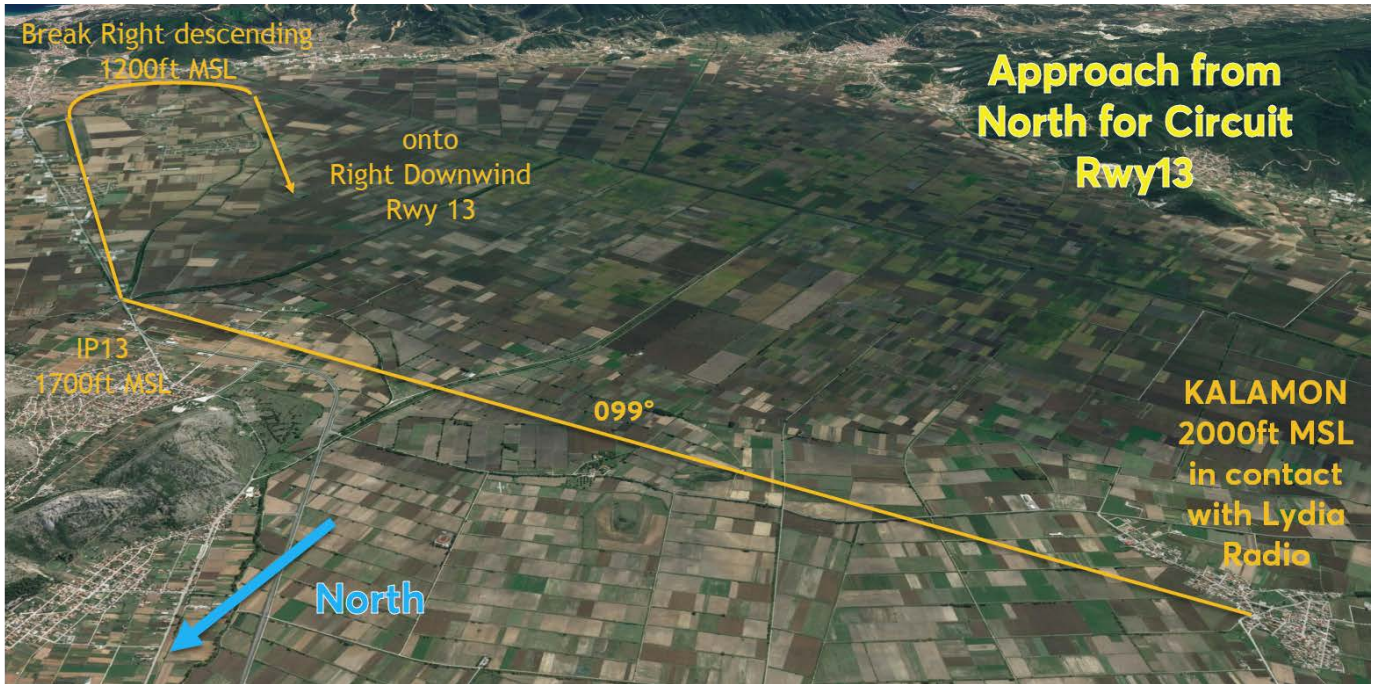
- If approaching from North within Kavala TMA (i.e. within Kavala TMA Sector 2, 3000ft AGL or above) contact Megas Alexandros tower on freq. 118.400MHz, (or Kavala Approach on freq. 124.650MHz) and request to proceed to KALAMON.
- Prior to **KALAMON**, coordinate with Megas Alexandros tower to descend to 4000ft MSL.



- If approaching without interfering CLASS D airspace, contact Lydia Radio (135.505MHz) at least 10 miles inbound or 10 minutes inbound the station whichever is the furthest.
- **OVER KALAMON**, contact LYDIA Radio and descend to 2000 ft MSL, Fly toward and call over Initial Point RWY 13 (IP 13) **1700ft MSL**. and then:

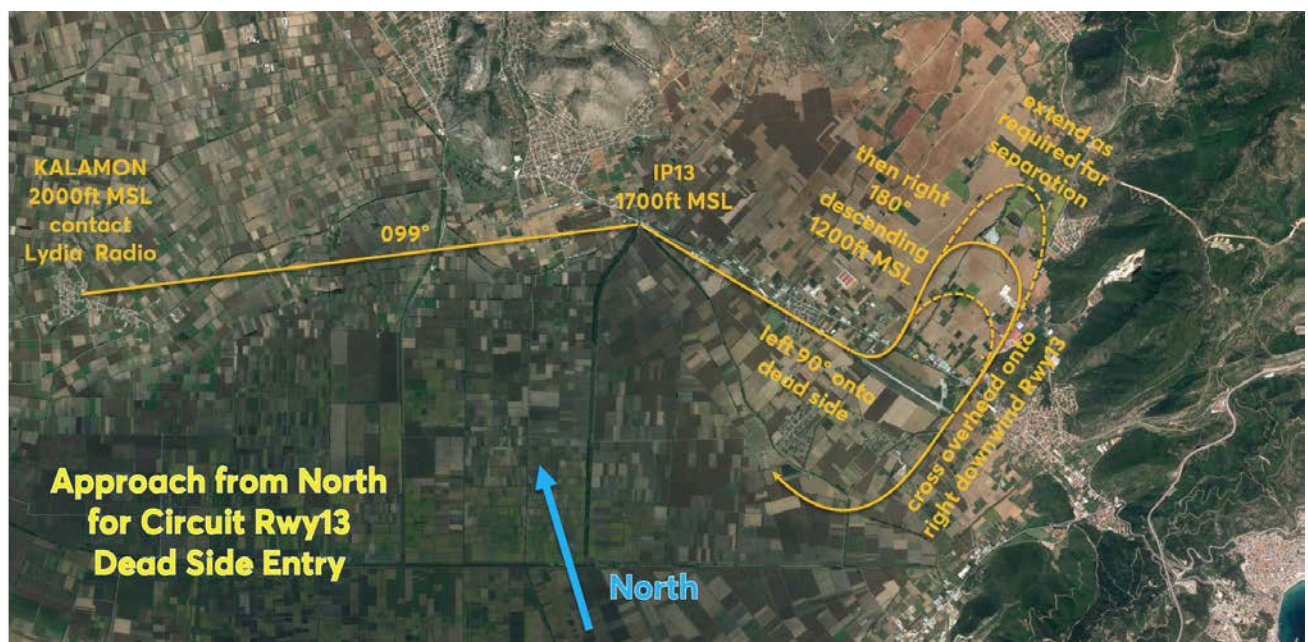
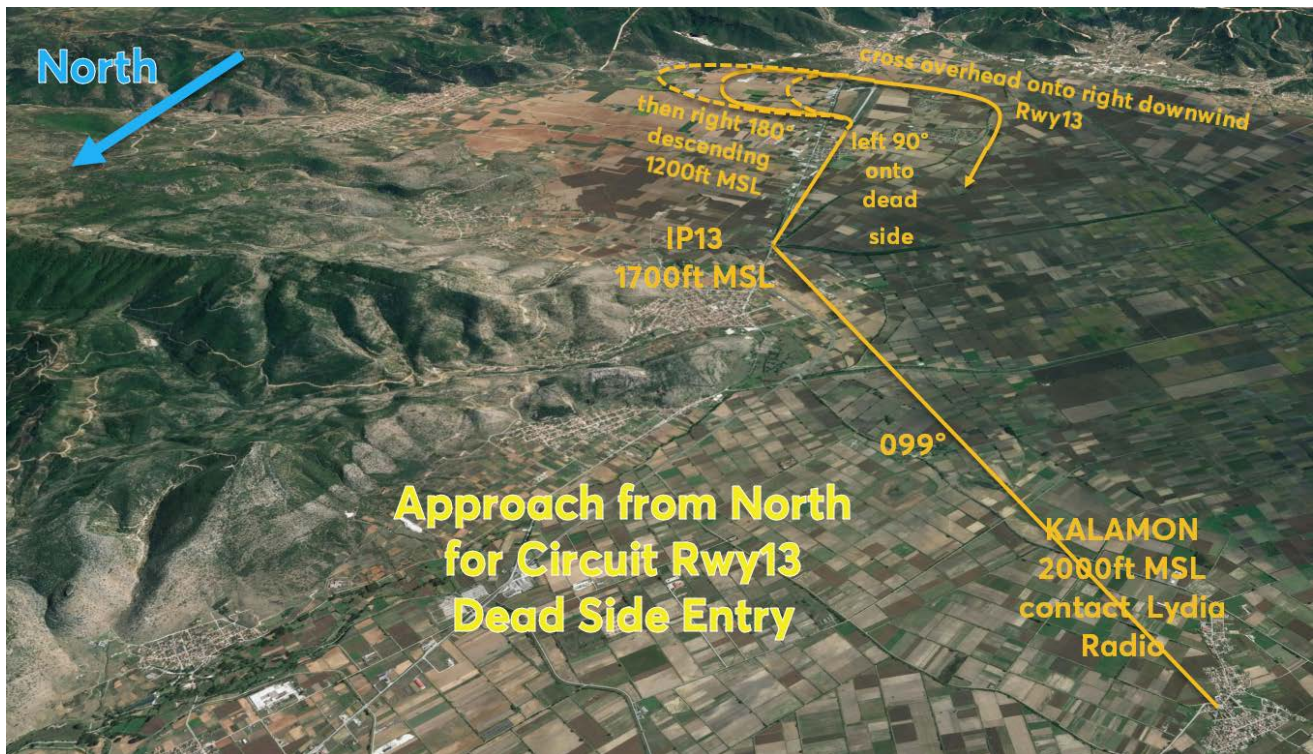


- For Circuit RWY 13 (Overhead Entry): Continue to overfly RWY 13 maintaining 1700ft. Over opposite RWY threshold, break to the right and descend to 1200ft MSL. Join Right Downwind RWY 13.
- *Traffic Pattern altitude RWY 13 is 1200ft.*
- *Left Traffic Pattern RWY 13 is prohibited.*



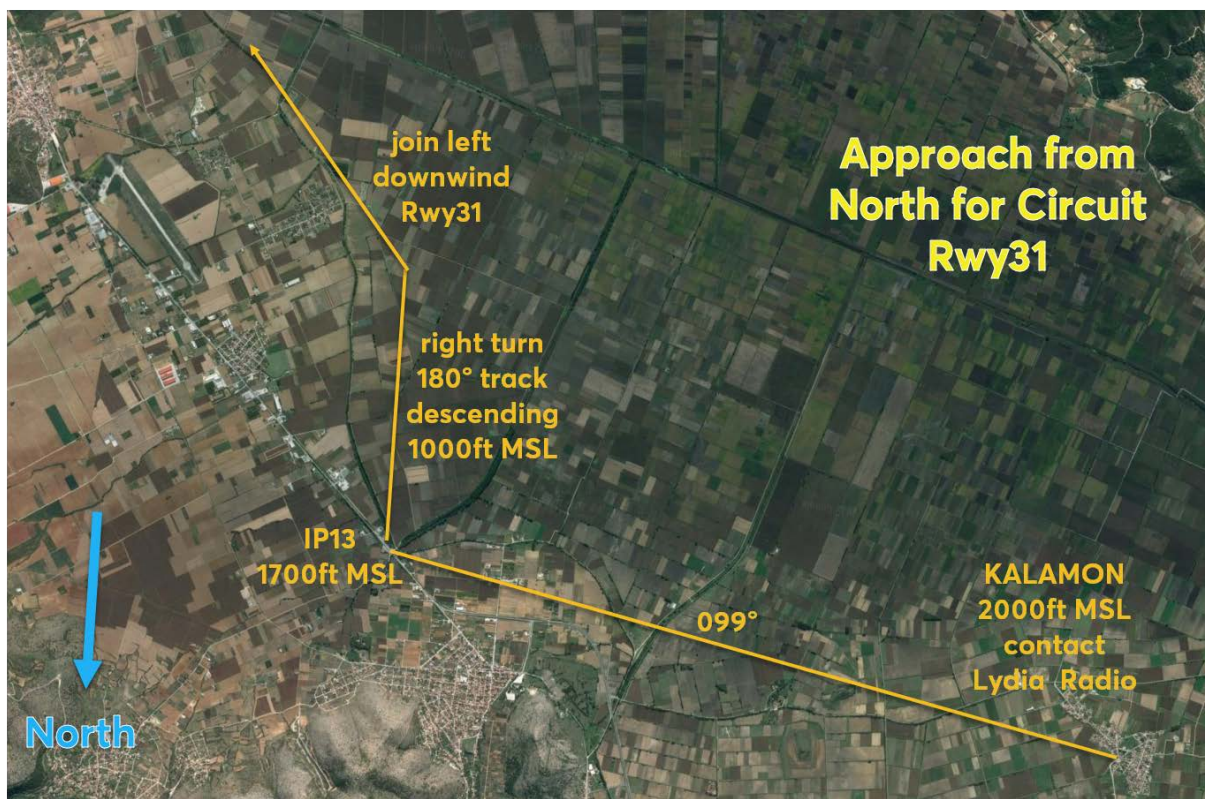
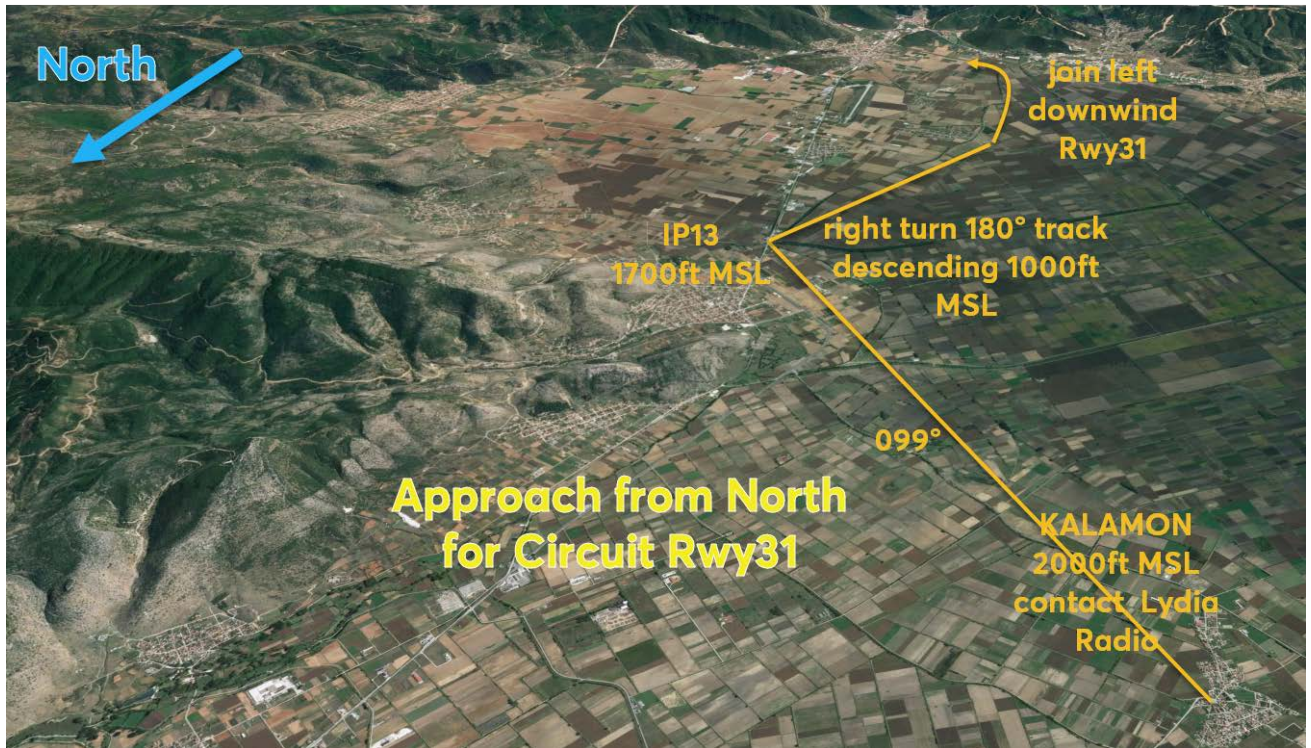


- For Circuit RWY 13 (Dead Side Entry): Continue toward the runway at 1700ft MSL. Approaching threshold RWY 13 turn left 90° descending dead side to 1200ft. Extend as required for separation with traffic in the circuit. Cross overhead Threshold RWY 31 and join right downwind RWY 13.
- *Traffic Pattern altitude RWY 13 is 1200ft.*
- *Left Traffic Pattern RWY 13 is prohibited.*



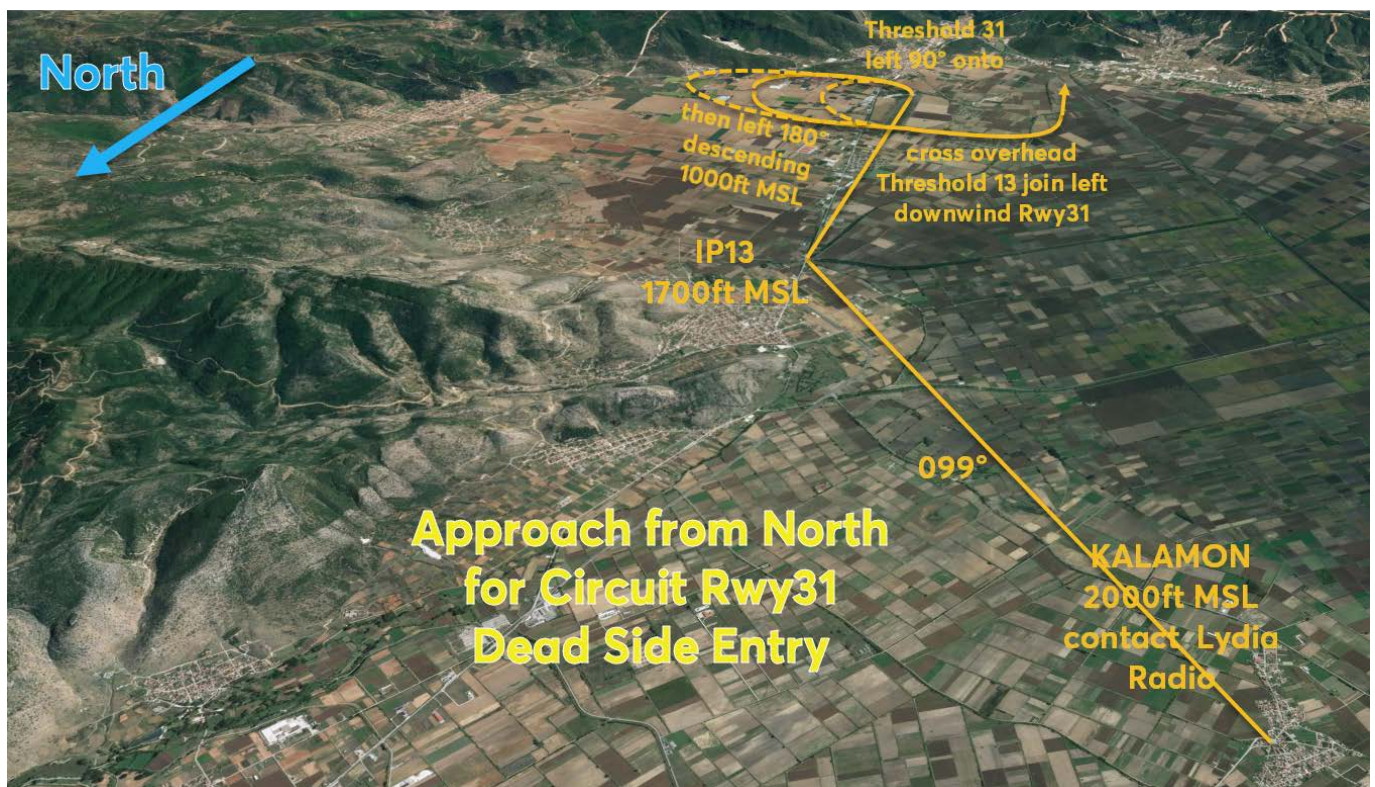
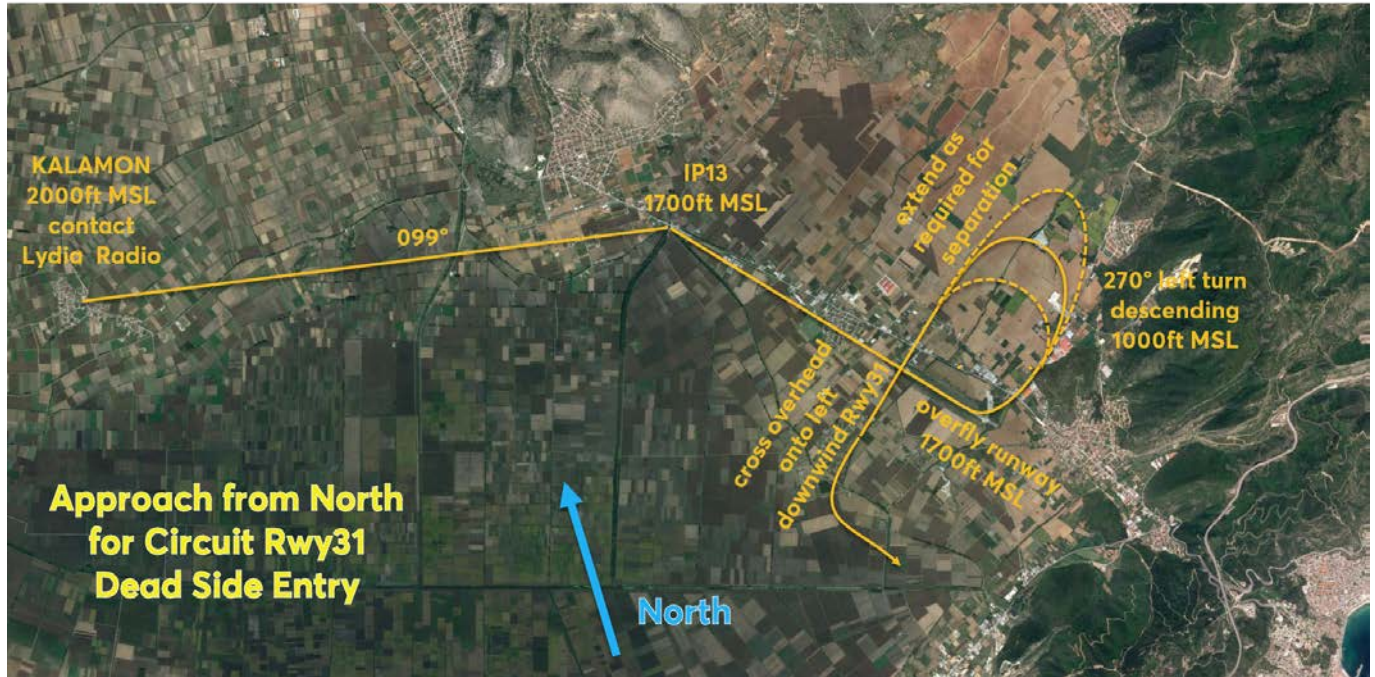


- For Circuit RWY 31: turn right to 180° track to join left downwind of RWY 31 and begin descent to 1000ft MSL.
- *Traffic Pattern altitude RWY 31 is 1000ft.*
- *Right Traffic Pattern RWY 31 is prohibited.*





- For Circuit RWY 31 (Dead Side Entry): Continue overfly Runway at 1700ft MSL. Over Threshold RWY 31 start a left 270° descending turn to the dead side to 1000ft MSL. Cross over threshold of RWY 13 and join left downwind.
- *Traffic Pattern altitude RWY 31 is 1000ft.*
- *Right Traffic Pattern RWY 31 is prohibited.*





### 5.1.1.2. Approaching from West, South and East:

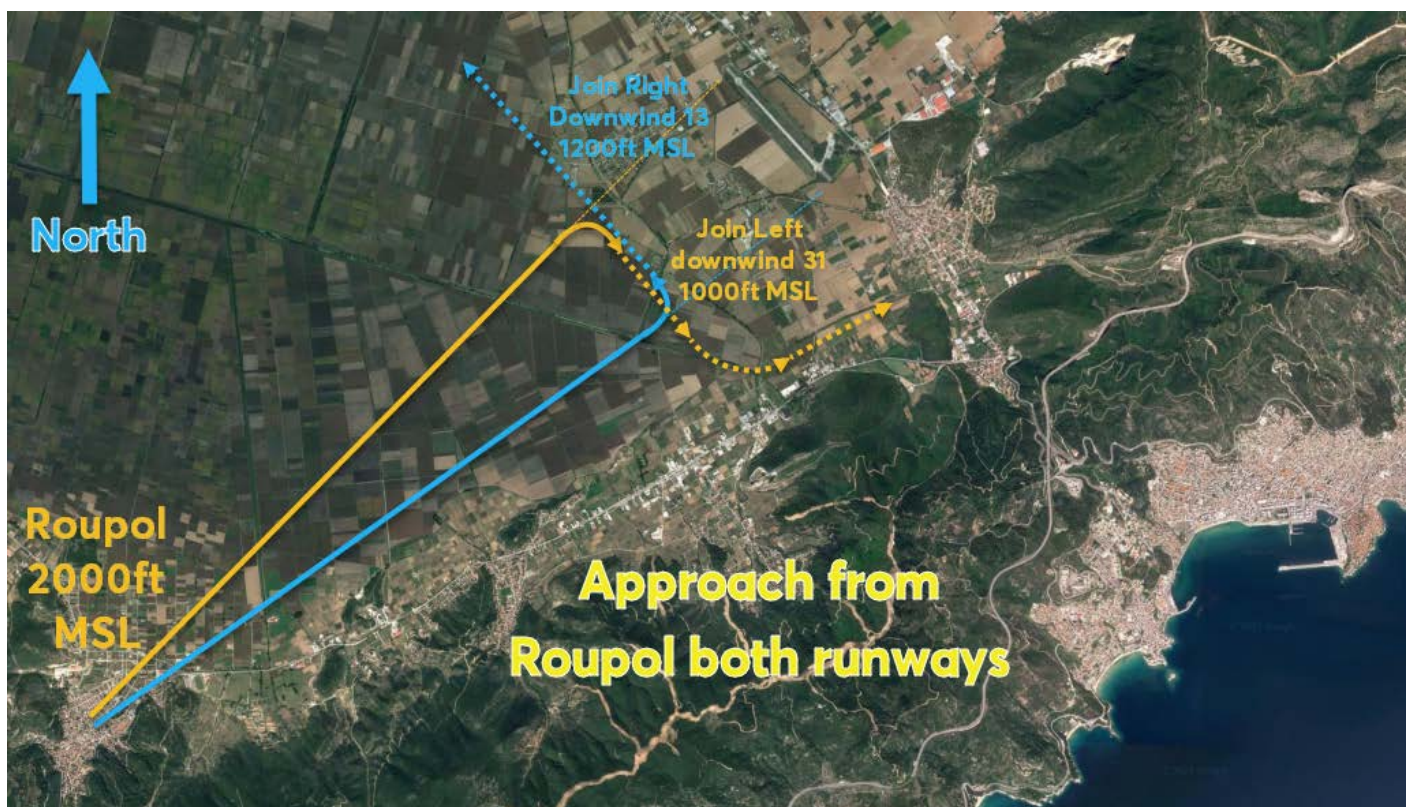
When approaching from the West, South or East, follow Megas Alexandros tower instructions and proceed to either:

- ROUPOL at 4000ft MSL or otherwise instructed by ATC or
- KAVALA at 4000ft MSL or otherwise instructed by ATC.

#### ROUPOL ARRIVALS

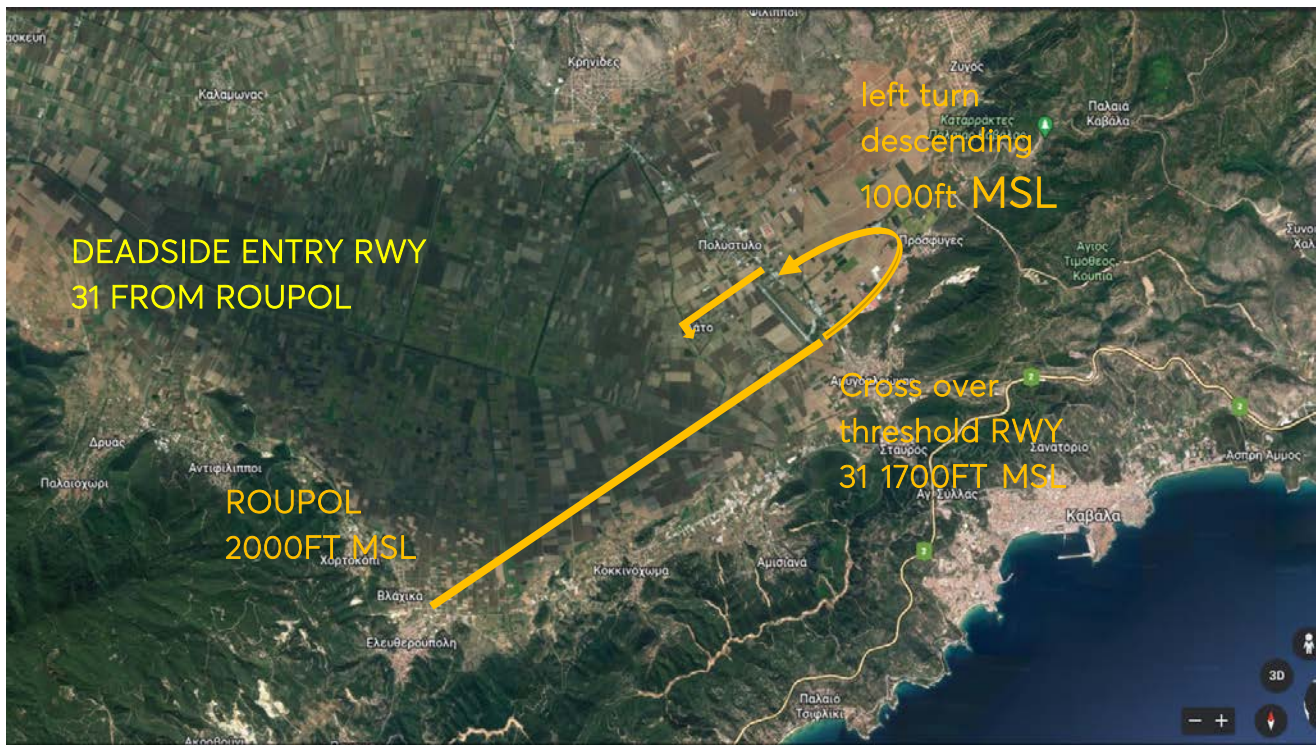
OVER ROUPOL contact LYDIA Radio and follow one of the below options:

- For Circuit RWY 13 (Downwind entry): Continue towards Threshold 31 and join right downwind RWY 13 at 1200ft MSL.
- For Circuit RWY 31 (Downwind entry): Continue towards Threshold 13 and join left downwind RWY 31 at 1000ft MSL.





- For Circuit RWY 31 (Dead Side Entry): Continue overfly Runway 1700ft MSL. At the end of the runway start a left descending turn to the dead side to 1000ft MSL. Cross threshold of runway 13 and join left downwind.



- For Circuit RWY 13 (Dead Side Entry): Continue toward the runway at 1700ft MSL. Approaching threshold RWY 13 turn right descending dead side to 1200ft. Extend as required for separation with traffic in the circuit. Cross overhead Threshold RWY 31 and join right downwind RWY 13.

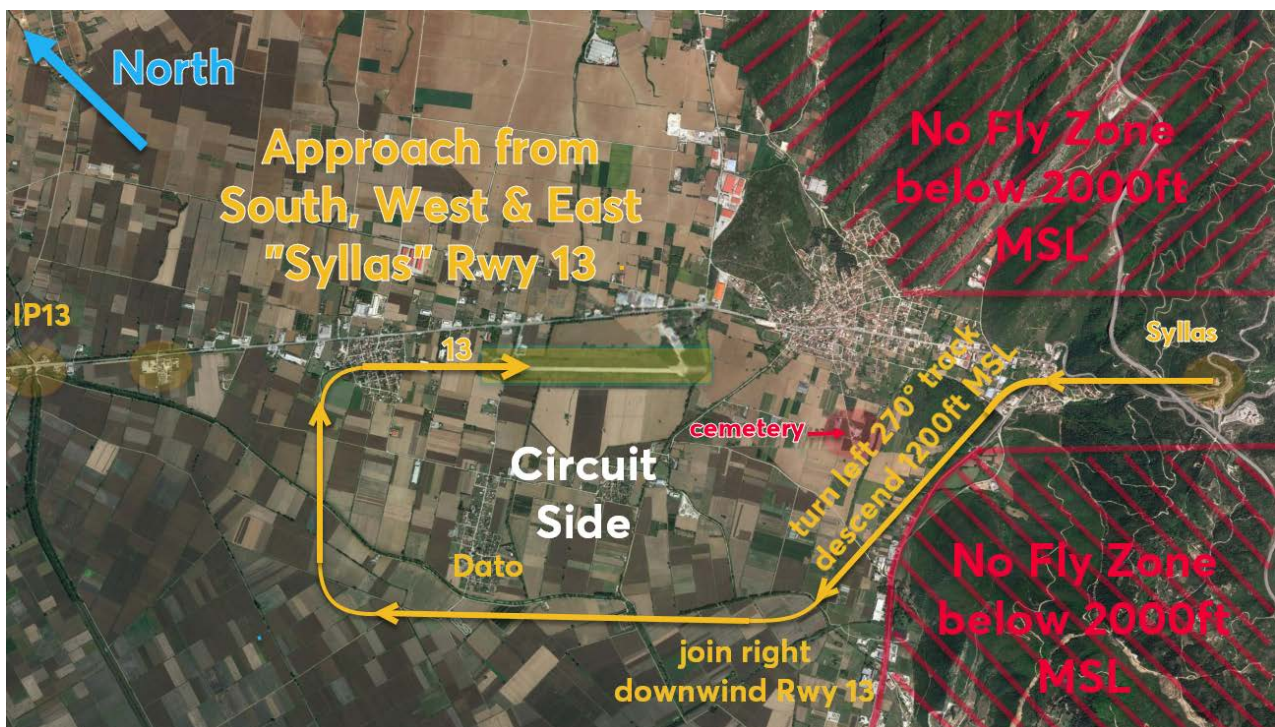
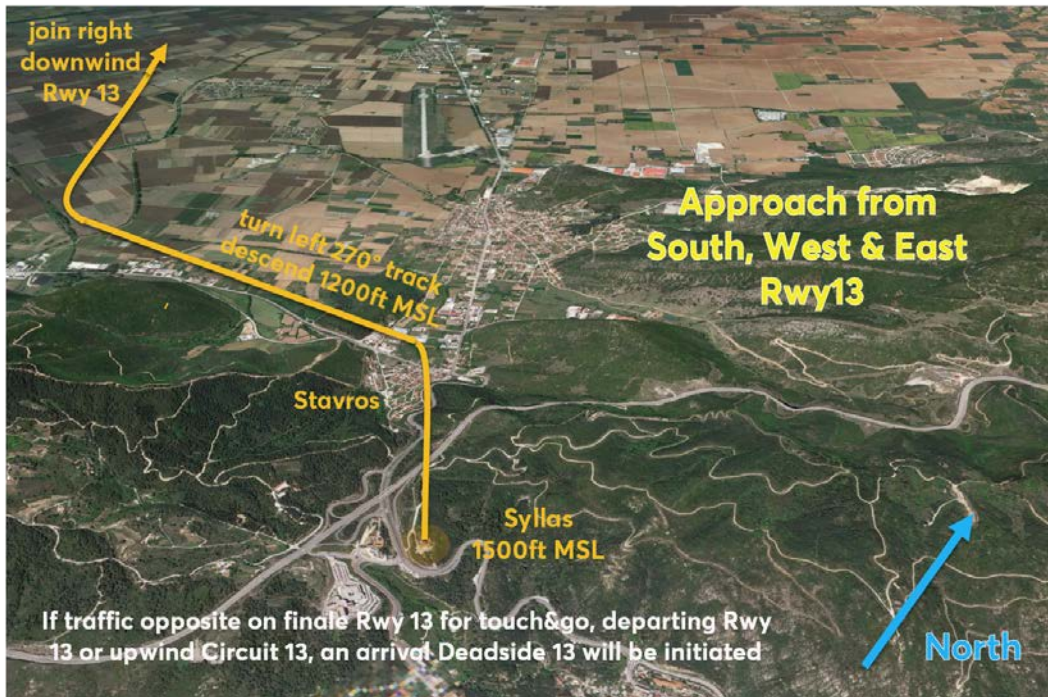




## KAVALA ARRIVALS

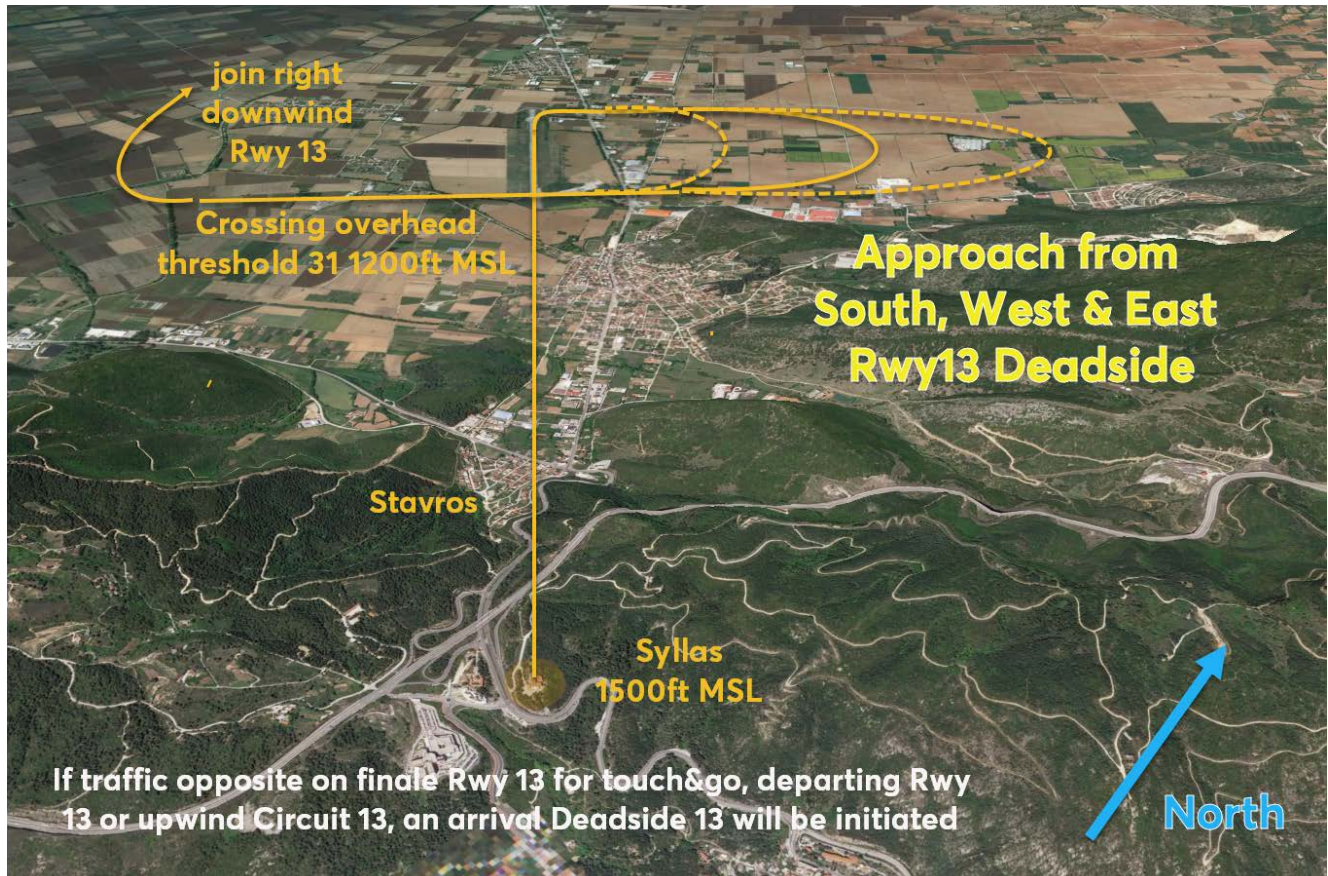
OVER KAVALA, switch to LYDIA Radio and follow one of the below options:

- For Circuit RWY 13: Start descending toward the runway 1200ft MSL, passing "Stavros" turn left to a track of 270° (leave the "parallel" national road on your left) to join right downwind RWY13 at 1200ft MSL.



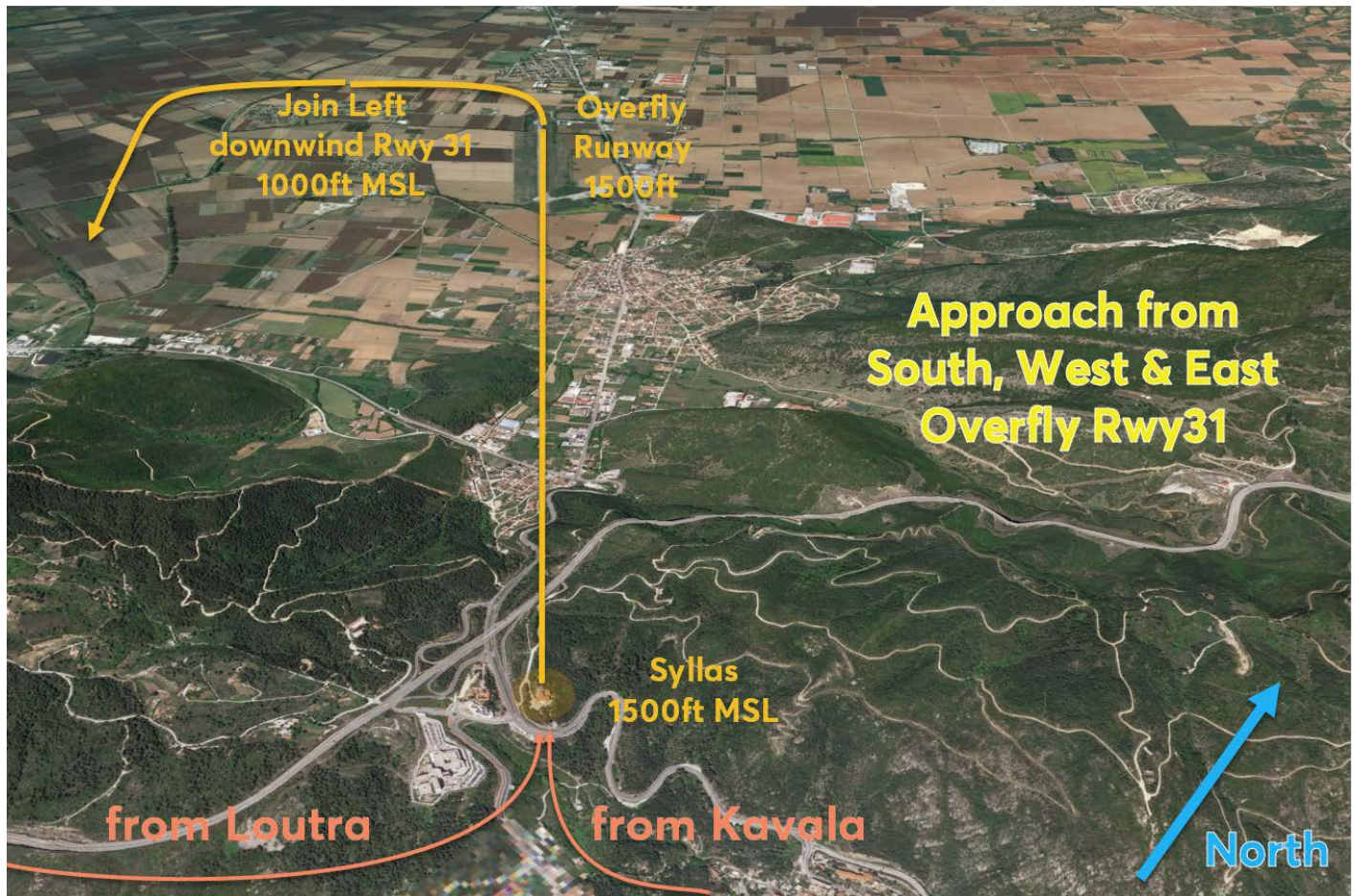


- For Circuit RWY 13 (Dead Side Entry): Continue overfly Runway at 1500ft MSL. At the end of the runway start a descending 270° right turn to the dead side (east) to 1200ft MSL. Cross overhead threshold 31 and join right downwind RWY 13.



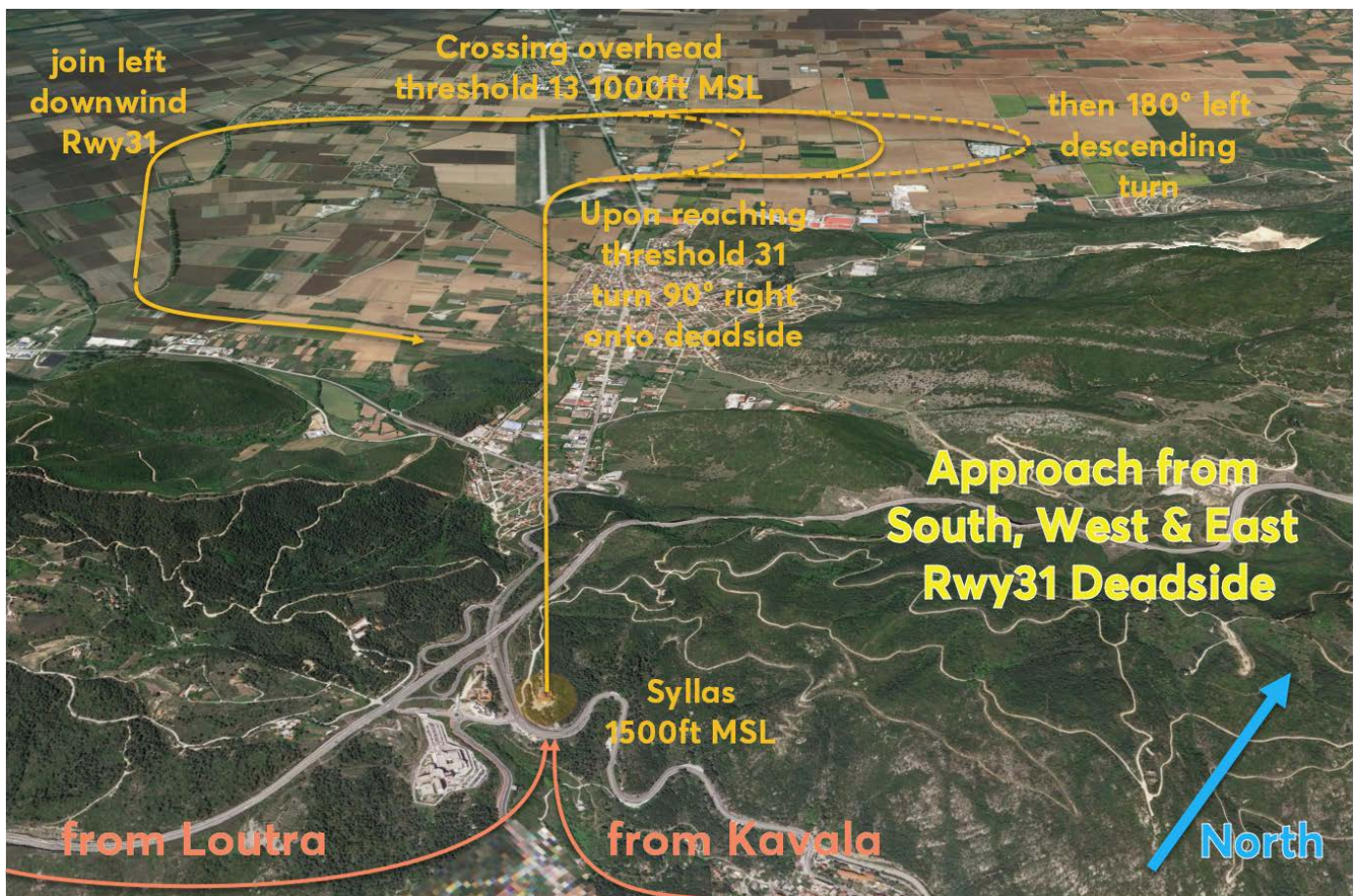


- For Circuit RWY 31: Start descending to 1500ft MSL and continue overflying the Runway. At the end of the RWY break to the left, descend to 1000ft MSL and join left downwind Rwy 31.





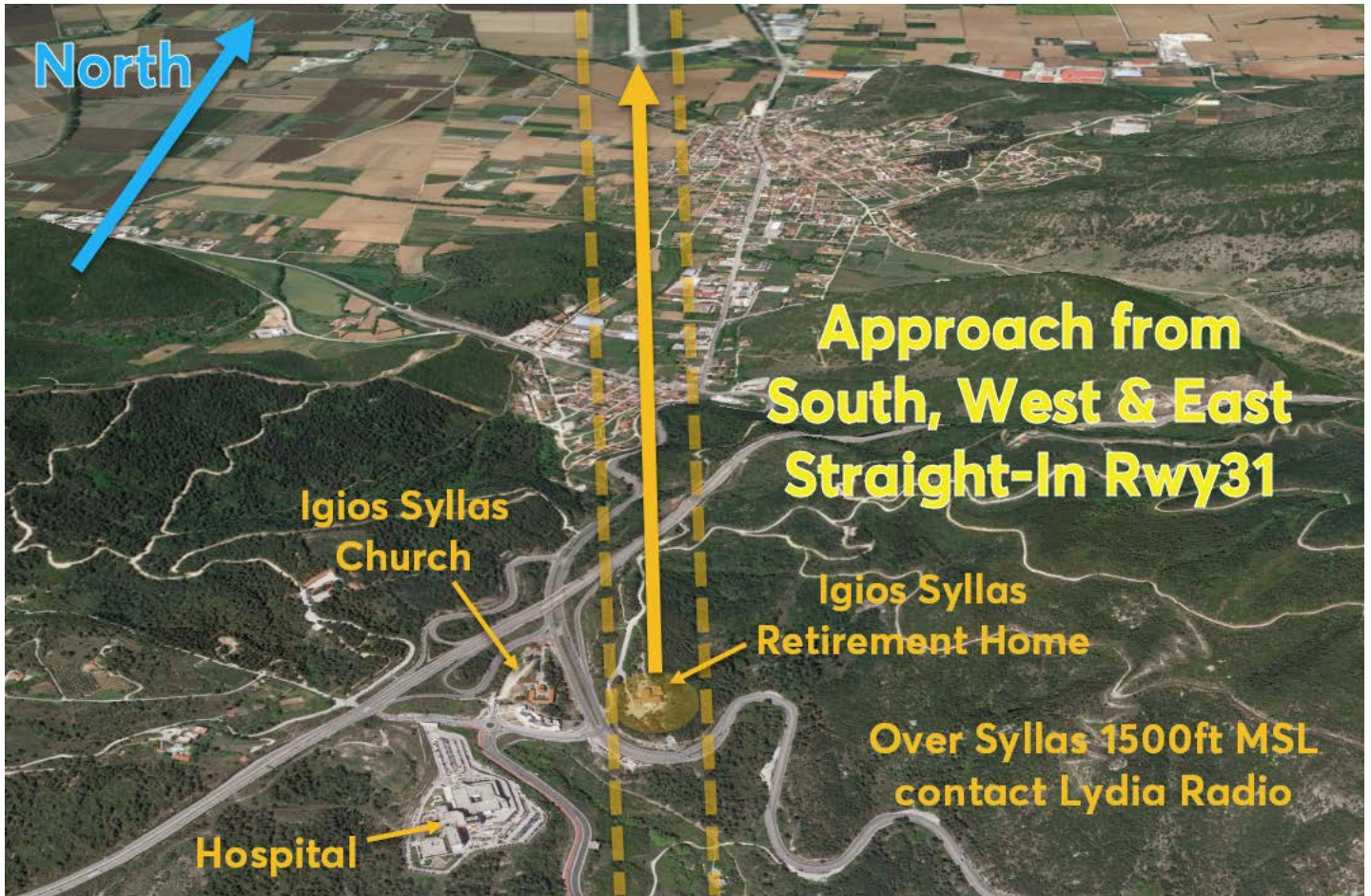
- For Circuit RWY 31 (Dead Side Entry): Continue till threshold 31 at 1500ft MSL then right turn 90° to the dead side (east) followed by left 180° descending to 1000ft MSL. Extend as required for traffic separation. Cross overhead threshold 13 and join left downwind 31.





- For STRAIGHT-IN RWY 31: On Megas Alexandros tower frequency proceed to SYLLAS (over Retirement Home) at 1500ft MSL.

This arrival is only permitted if Megas Alexandros tower clears you for approaching Kavala at 200ft MSL.

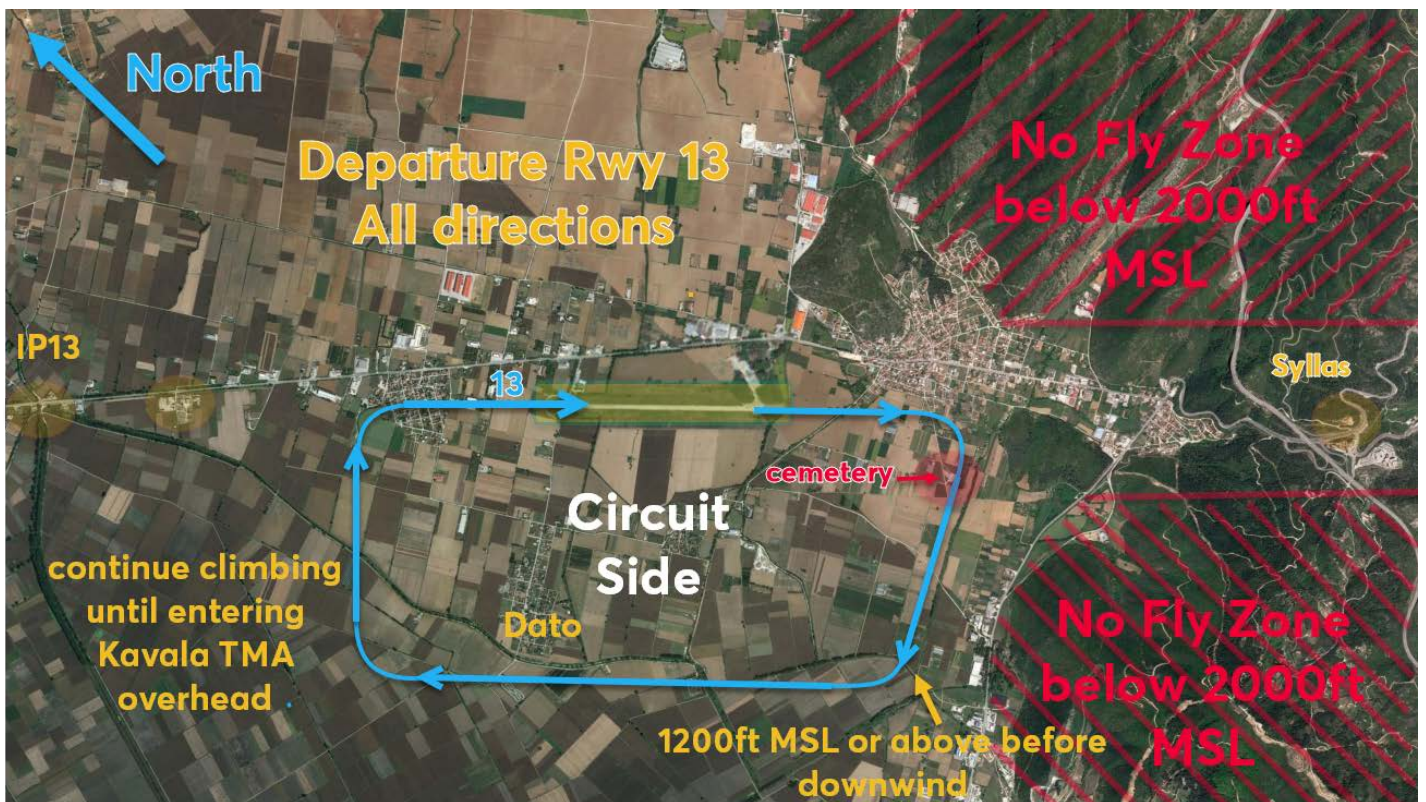




### 5.1.2. VFR DEPARTURE PROCEDURES

#### All Destinations - Departure from RWY 13:

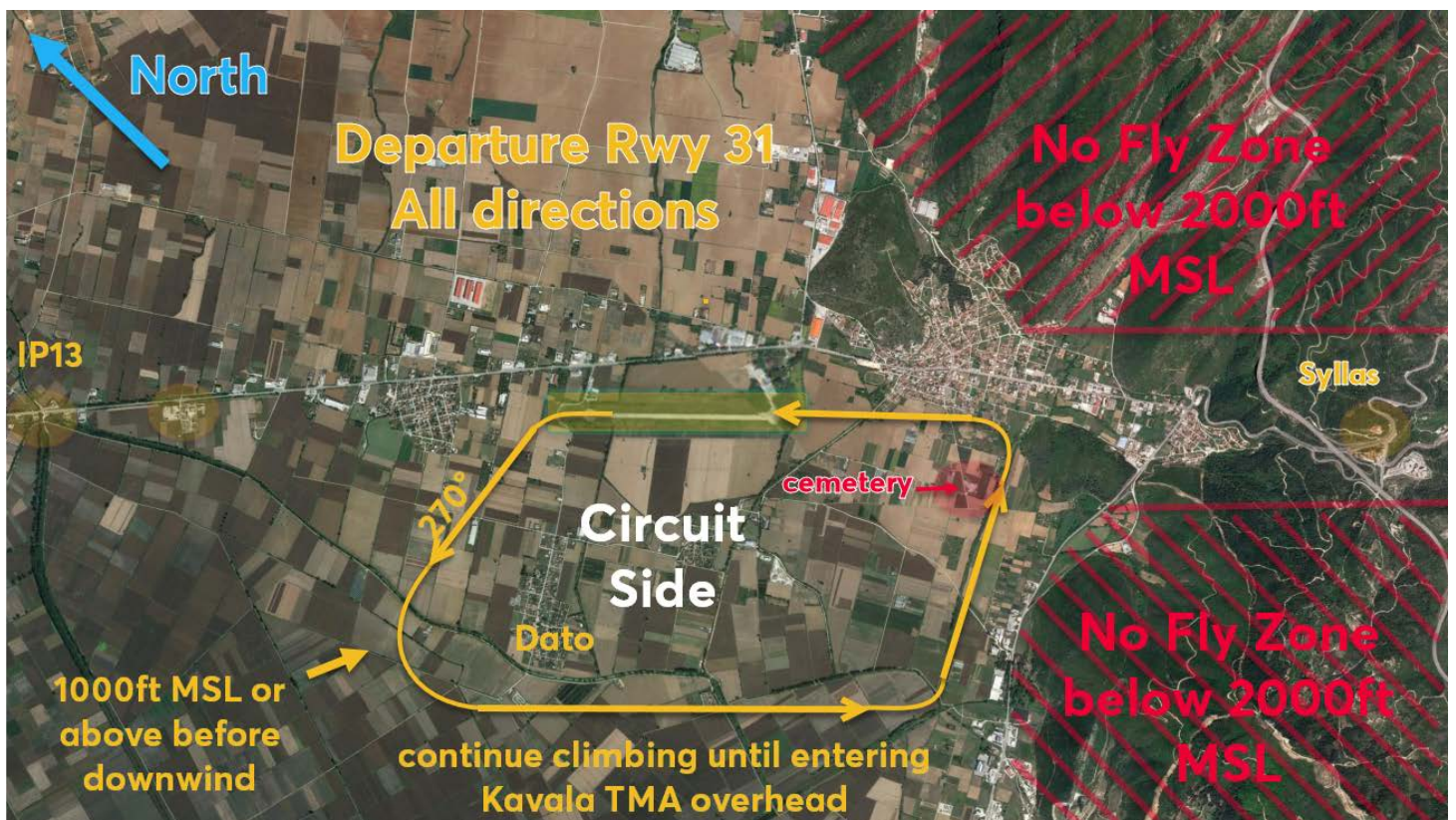
- After takeoff, at 500ft MSL (abeam quarry) start a right climbing turn to a track of 240°. Stay north of the tree line.
- Continue climb, and ensure being above 1200ft MSL before downwind, follow downwind track. Continue to climb overhead the circuit
- Passing 3000ft MSL call Megas Alexandros tower for further instructions.





### All Destinations - Departure from RWY 31:

- After takeoff, at DER turn left and continue climbing on heading 270° to avoid Polystylo.
- Past Polystylo turn left onto downwind above 1000ft MSL and continue climb on downwind track.
- Continue to climb overhead the circuit
- Passing 3000ft MSL call Megas Alexandros tower for further instructions



## 5.2. VFR Procedures when LGKV is closed.

When LGKV is closed, Kavala TMA & CTR are Class G airspace except the airways which are Class E airspace. It is highly recommended that you still fly within LGKV VFR routes and altitudes as local traffic is following them, therefore there will be a better traffic flow. Please note that approaching Lydia Aerodrome you are strongly recommended to try to contact Lydia Radio (135.505MHz) as soon as practically possible in order to coordinate with current traffic. Lydia Radio in any case should be contacted no less than 10 NM or 10 minutes inbound the station whichever is earlier. Lydia Aerodrome is operating an Air/Ground aeronautical service station (UNICOM). This is not an AFIS or an ATC service. The traffic flow is the responsibility of the Pilot in Command.

Lydia Radio is audible some 30 NM around the station, in various altitudes depending on the terrain. It is advisable that if you are not in contact with Lydia Radio, another station should be contacted such as Athina VFR Flight Information Service 130.700MHz or 130.925MHz, Makedonia Approach, 120.800MHz, Alexandroupoli Approach 123.800MHz or in extraordinary cases TUGRIT service 129.800MHz (in the vicinity of LGKM there are two stations you may possibly get in contact with; TOPSY or ISMAROS).

During times when LGKV is closed, an Air Force ATC may be available at LGKV airport. Lydia radio operator will inform you for the availability of the frequency. Please note that, unless otherwise advised, even if an Air Force ATC is manning the tower of LGKV, TMA and CTR remain Class G while LGKV is closed.

When LGKV is closed KAVALA entry point is not conditional and may be used as desired.



### 5.3. Traffic Patterns

#### TRAFFIC PATTERN RWY 13

1. Upwind leg: Use caution to not extend this leg due to higher terrain to the south. After takeoff at 500ft MSL start turn to crosswind with 20° AOB. As a ground reference for the start of the turn, use the quarry on the left side.
2. Crosswind leg: The crosswind track is not perpendicular to the runway. Turn to a track of 240°. Follow and keep the tree line to your left. Level off at 1200ft MSL. Stay North of the national road avoiding the no fly Zone.
3. Downwind leg: Start turn to downwind when abeam the go-kart circuit (abeam DATO) off your right wing or a quarry off your left wing. Use the runway as the primary reference to stay on a parallel track.
4. Base leg: When the desired touchdown point is 45° behind the wing (no wind), initiate the descending turn to base. As a track reference for the 'no wind' base leg, use a large scrap yard off your nose on the extension of the RWY.
5. Final approach: When runway is about 15° forward of the wing (no wind) at 800ft MSL start the turn to final. You will overfly the town of Polystylo at 450ft-550ft MSL.

#### TRAFFIC PATTERN RWY 31

1. Upwind leg: For noise abatement reasons, after takeoff at DER start left turn to track 270°. Abeam Polystylo turn left to join the crosswind leg and climb to 1000ft MSL (800ft AAL).
2. Crosswind leg: The crosswind track is perpendicular to the runway.
3. Downwind leg: Start turn to downwind when abeam the go-kart circuit (abeam DATO) off your left wing. Use the runway as the primary reference to stay on a parallel track.
4. Base leg: The base leg is not at the usual distance due to the high terrain to the south of the runway. Maintain parallel to the tree line under your left wing. Stay North of the national road avoiding the no fly Zone.
5. Final approach: When the runway is about 15°-20 forward of the wing (no wind) start the turn to final you should be about 600ft MSL. Use the cemetery on the left as a reference to begin the turn to final.

## 5.4. Notes

1. KALAMON, ROUPOL, KAVALA points may be used as holding points when required for traffic deconfliction or change of altitude. Approval of LGKV ATC is required.

2. Coordinates:

a. SYLLAS –	N405630 E0242243
b. KAVALA –	N405603 E0242442
c. KALAMON -	N410044 E0241238
d. ROUPOL –	N405500 E0241521
e. INITIAL POINT RWY 13 (IP13)–	N410005 E0241822
f. AMYGDA –	N405744 E0242137

3. Useful Frequencies

3.1. LGKM	Lydia Radio	135.505MHz
	Lydia ATIS	TBA
3.2. LGKV	Megas Alexandros Tower	118.400 MHz
	Kavala Approach	124.650 MHz
	ATIS	128.155 MHz
3.3. FIC	Athina Information	130.700 MHz or 130.925 MHz



## 6. IFR Procedures

LGKM is a Day & Night VFR approved aerodrome.

IFR departures and arrivals are accepted in a Z and Y flight plan respectively.

Weather permitting, you may activate or cancel your IFR flight plan either while within LGKV TMA or, prior entering LGKV TMA.

During within LGKV TMA, you shall use LGKV VFR Routes. If Kavala is closed you may proceed otherwise, however you are advised to follow VFR Routes either way, for better coordination and traffic flow.

## **7. Helicopters Procedures**

To be published soon.

## **8. Night Procedures**

To be published soon.