



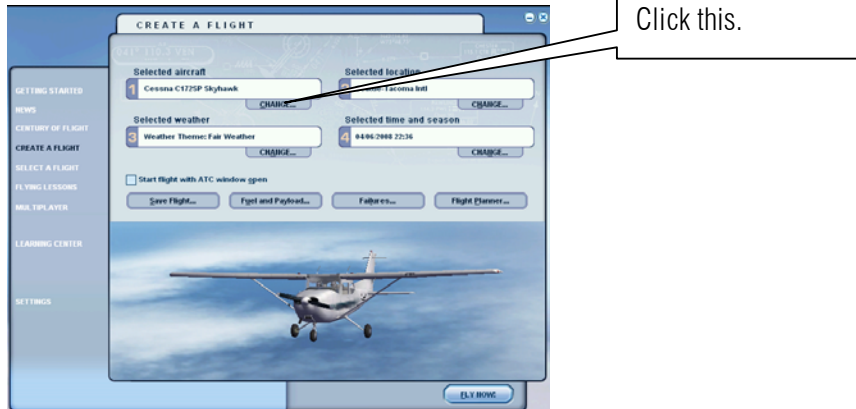
A SAMPLE FLIGHT FOR AIRBUS A400M
EGCC TO EGLL

BY

N HERRERA

The only way a pilot wannabe can learn through sample flight. If you are a beginner and just recently added Airbus 400M to your collection this sample flight shall help you. **WHEN YOU ARE INSIDE THE FLIGHT SIMULATOR ALWAYS PRESS P WHEN READING THE INSTRUCTION.**

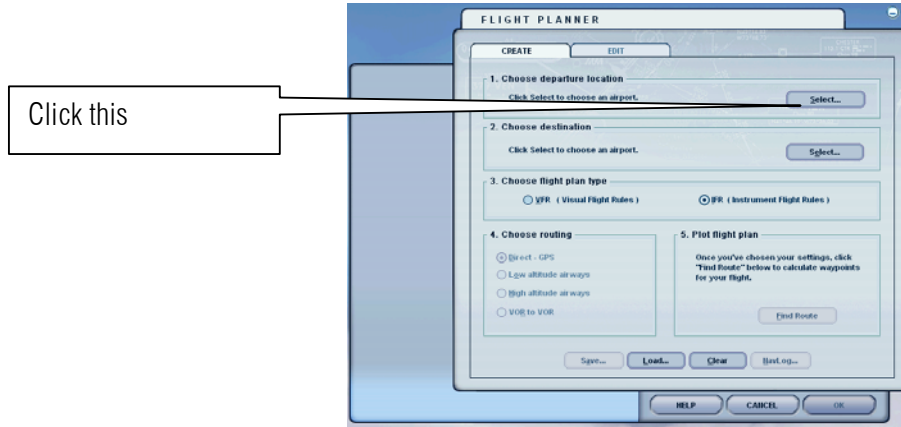
1. Start MS Flight simulator 2004 or FSX



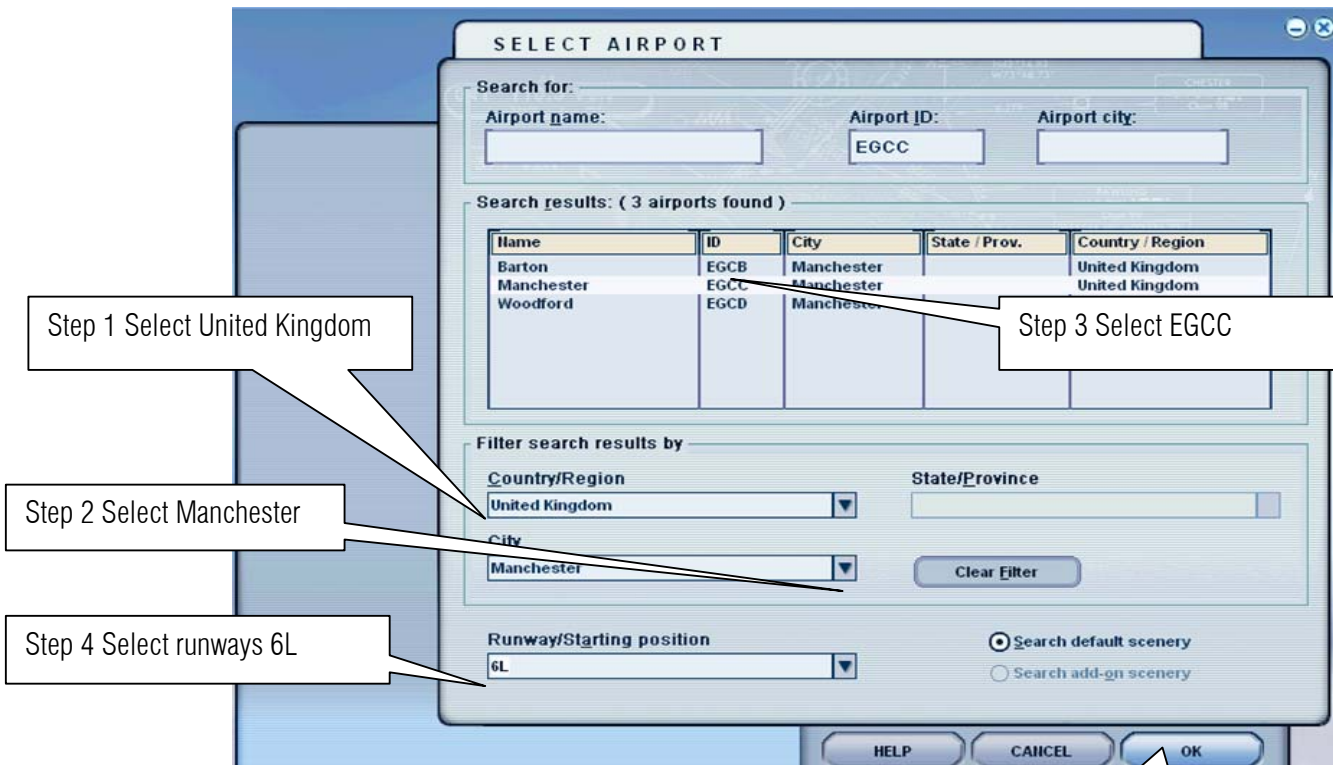
2. Change the setting as shown below. Select Airbus Military. Click ok.



3. Click the flight planner button . I want to fly from Manchester UK to London Heathrow



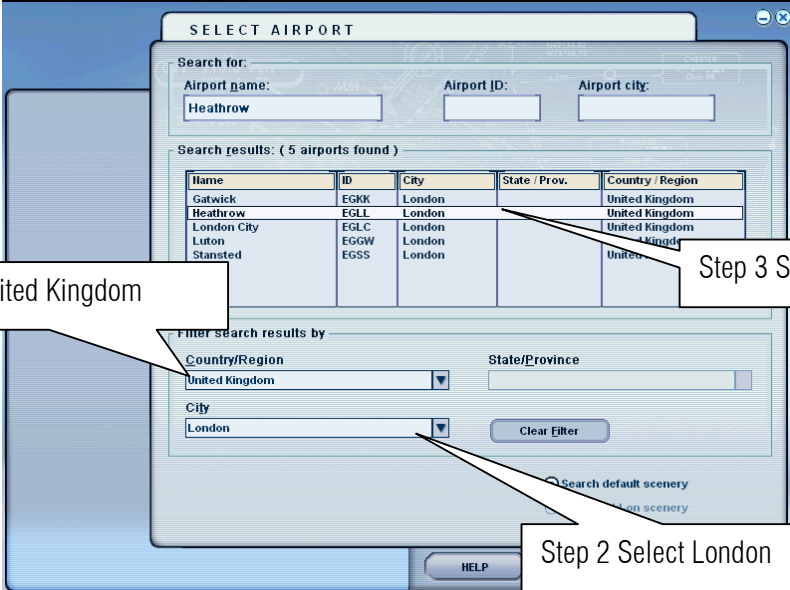
4. Select the departure Airport so I want to depart from Manchester international airport the Airport ID code is EGCC and the runway is 6L



(I saw a lot of bad comment in youtube regarding starting on Runways, HEY! This is a Example remember? You can start To the any gate you want.)

Step 5 Click ok when finish

5. Select the Destination Airport.

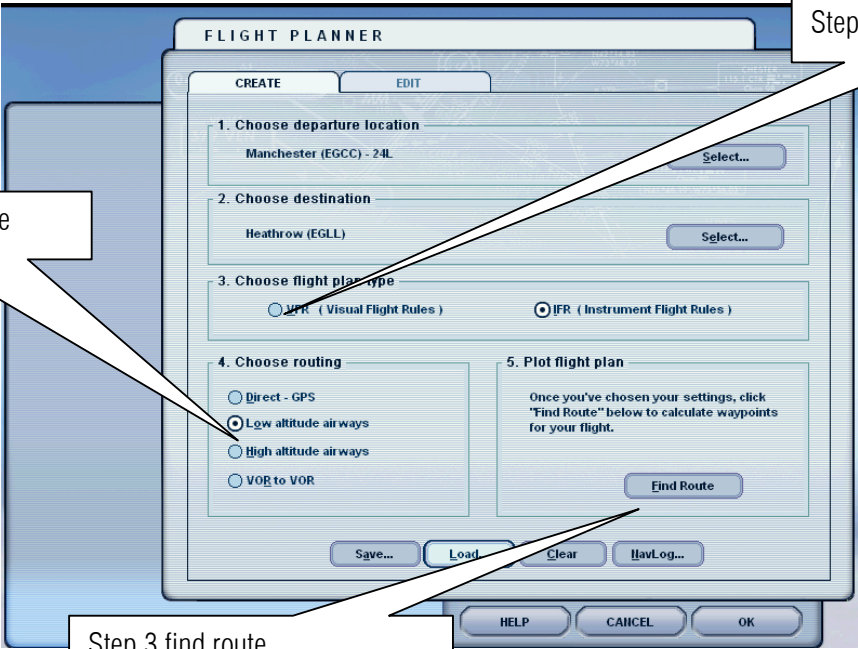


The screenshot shows a 'SELECT AIRPORT' dialog box. At the top, there are input fields for 'Airport name', 'Airport ID', and 'Airport city', with 'Heathrow' entered in the first. Below is a table of search results for 5 airports in the United Kingdom. Callouts indicate the following steps:

- Step 1: Select United Kingdom (Country/Region filter)
- Step 2: Select London (City filter)
- Step 3: Select EGLL (Heathrow airport ID)

Name	ID	City	State / Prov.	Country / Region
Gatwick	EKKK	London		United Kingdom
Heathrow	EGLL	London		United Kingdom
London City	EGLC	London		United Kingdom
Luton	EGGW	London		United Kingdom
Stansted	EGSS	London		United Kingdom

6. Since it not so far I want to select the low altitude because it's a 30 min Ride

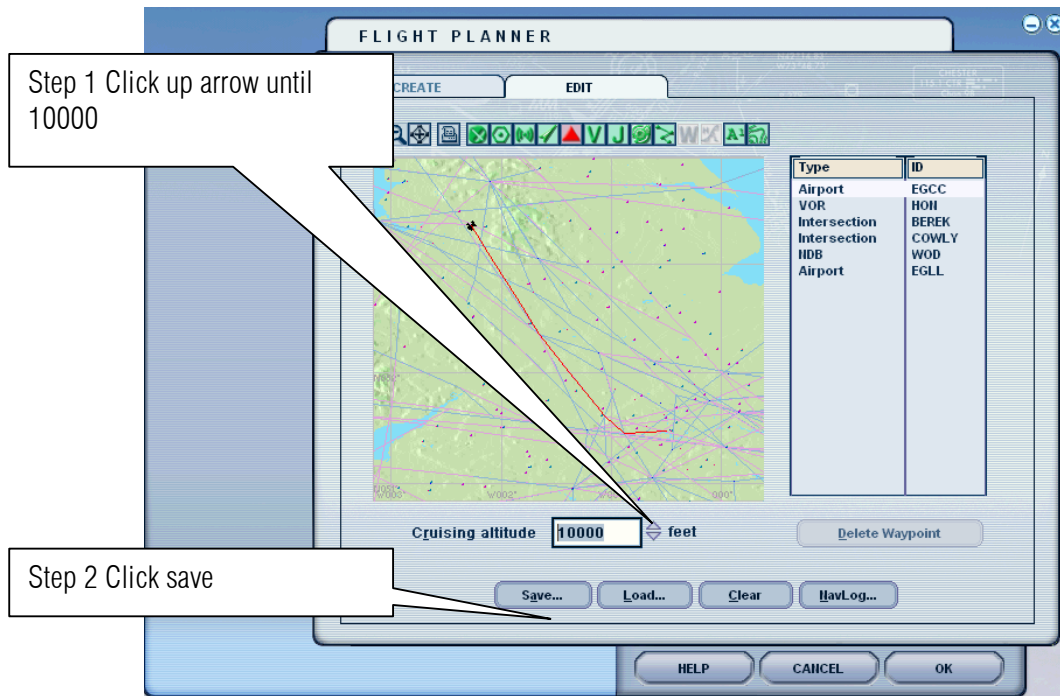


The screenshot shows a 'FLIGHT PLANNER' dialog box with the following settings and callouts:

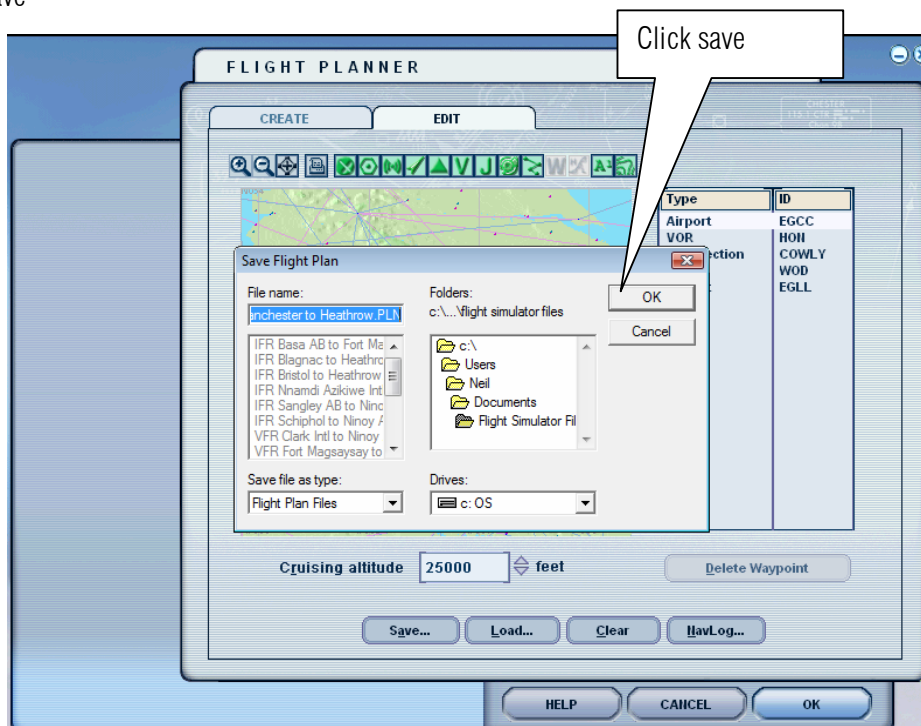
- Step 1: Select Low Altitude (under 'Choose routing')
- Step 2: Select VFR (under 'Choose flight plan type')
- Step 3: Find Route (button)

Other visible settings include: Departure location: Manchester (EGCC) - 24L; Destination: Heathrow (EGLL); Flight plan type: IFR (Instrument Flight Rules) selected; Routing options: Direct - GPS, Low altitude airways (selected), High altitude airways, VOR to VOR.

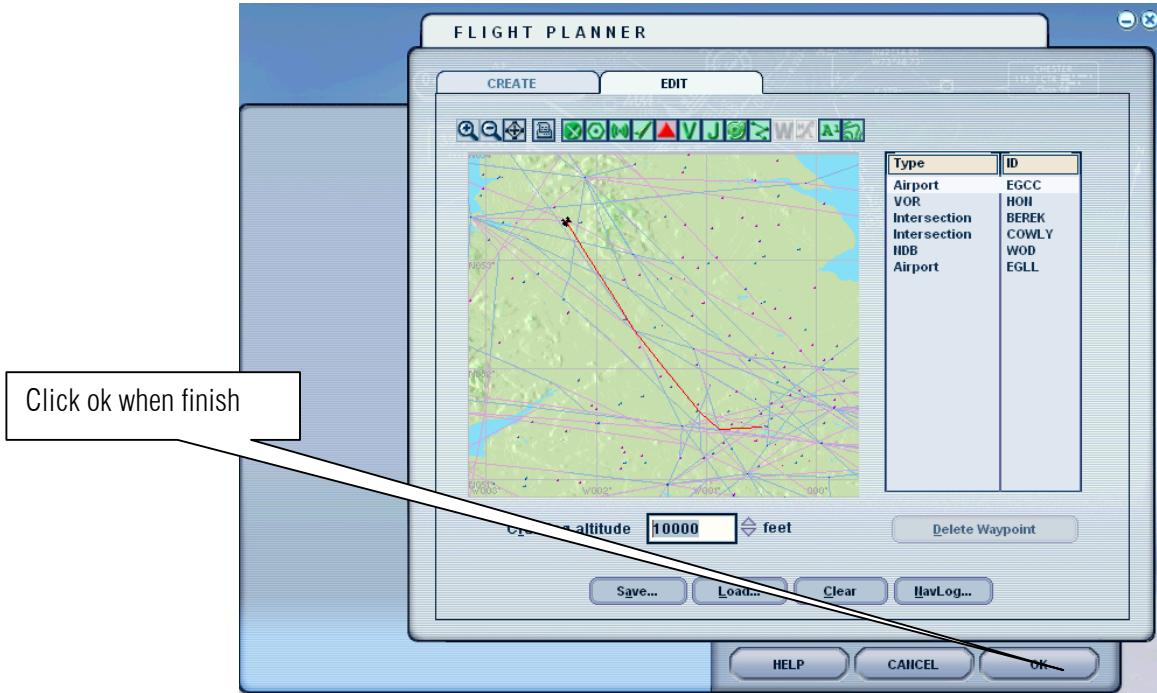
7. The flight planner will show your Waypoints let us save it for future games.



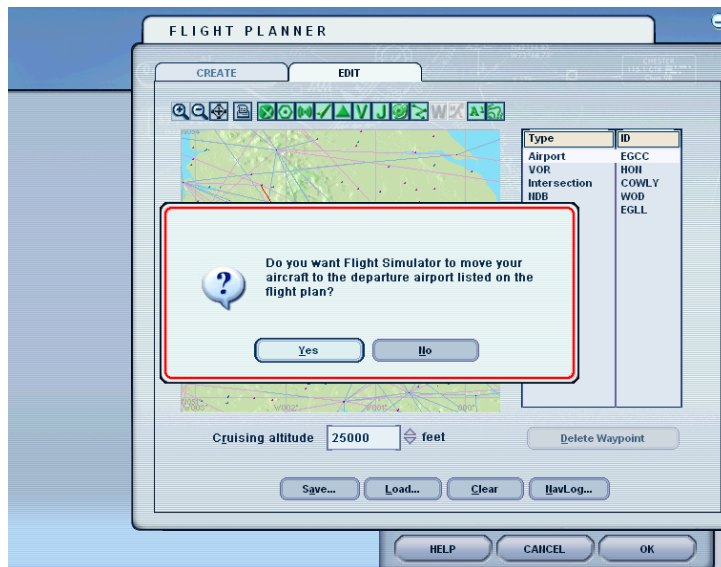
8. Click save



9. Select ok button.



10. Click the Yes button.



11. click fly now



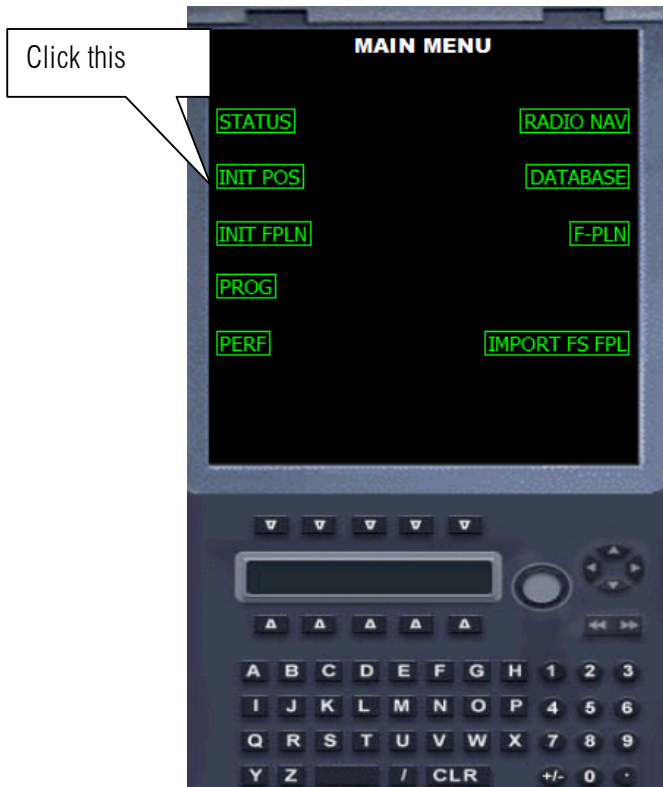
12. Here in this example we are starting on a runway. It's forbidden in the real world.



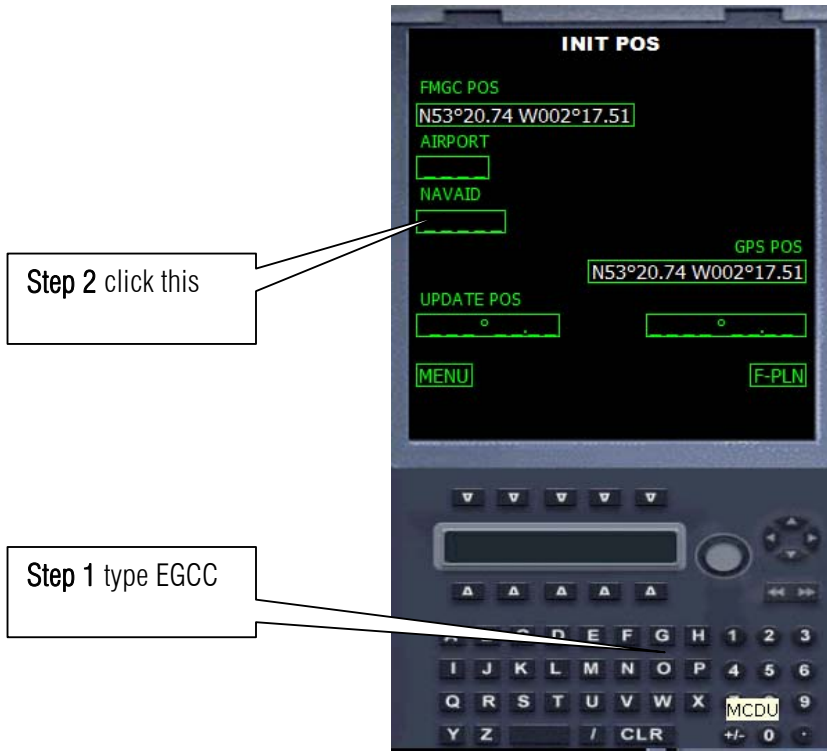
13. Let us start and program the flight plan



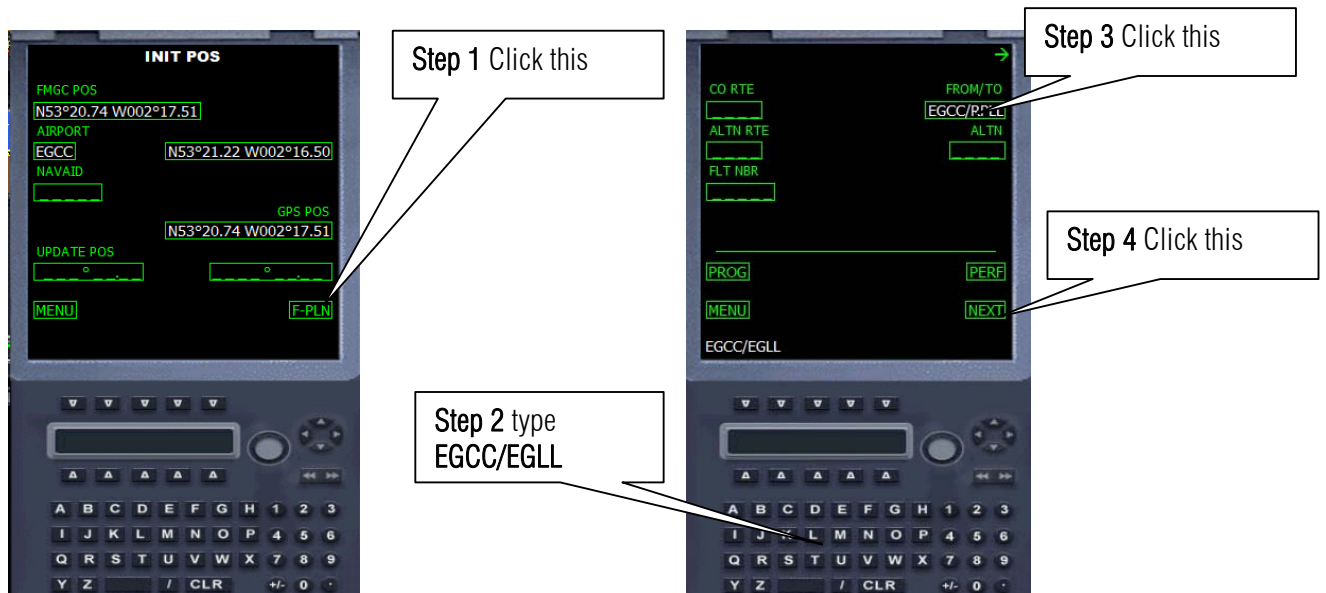
14. We set our initial position.



15. Using the keypad type in EGCC which represent Manchester international airport



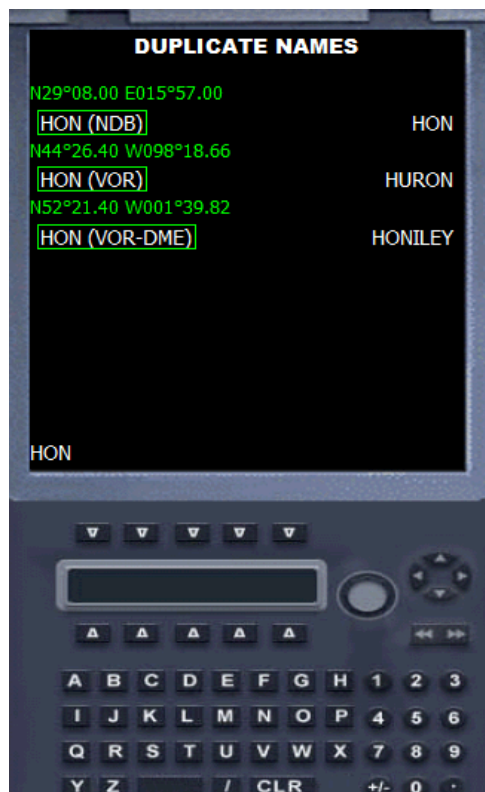
16. Let us enter our flight plan




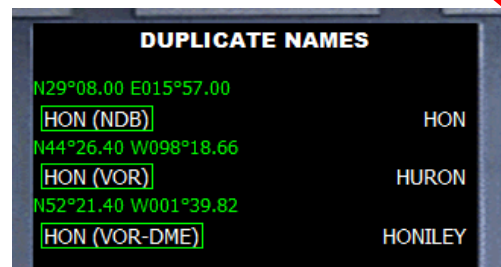
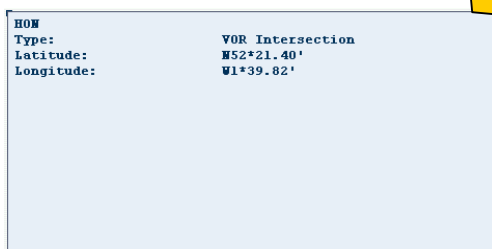
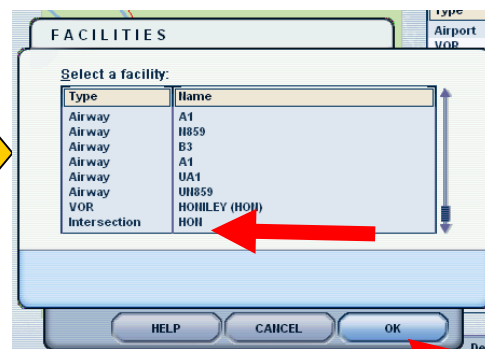
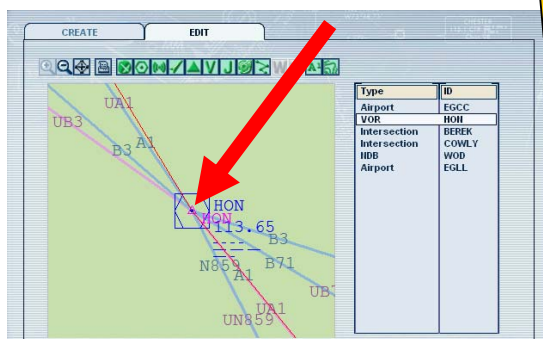
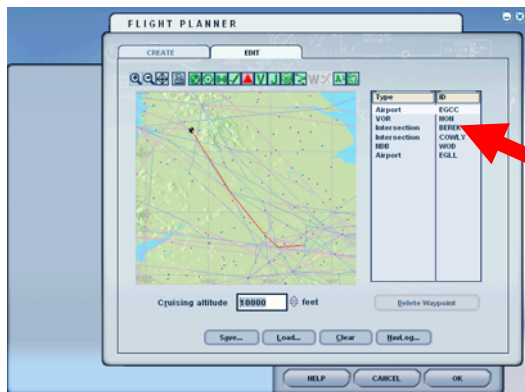
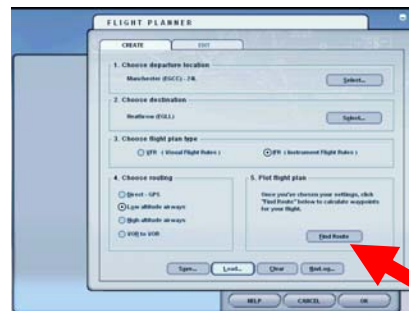
17. Recalling page 5 our first waypoint is HON so enter it on our MCDU



Type	ID
Airport	EGCC
VOR	HON
Intersection	BEREK
Intersection	COWLY
HDB	WOD
Airport	EGLL



18. Oh uh! What is this? This means there is duplication. Go to Flight plan. Press ALT on the keyboard then Flight then flight plan. Click Find Route then on the list box click HON. Zoom in to HON by clicking the  icon. Then click the icon of HON. So the choice is 1L. **DO NOT CLICK LOAD! PRESS CANCEL ON THE FACILITY INFORMATION DIALOG AND CANCEL ON FLIGHT PLANNER DIALOG AND RETURN TO FLIGHT SIM.**



19. Now according to the flight plan after HON is BEREK so enter BEREK now.

Click this

Step 2 click here on EGLL

Step 1 type BEREK

Waypoint	Distance
EGCC	159° 63.8NM
HON	139° 69.0NM
EGLL	TOTAL 132.8NM

Coordinates	Name
N33°38.00 E005°00.00	BEREK
N51°39.38 W001°05.72	BEREK

20. Just like HON, BEREK has a duplicate name. Go to flight plan again and check the coordinates of BEREK

Step 1 Click triangle

Step 2 Double Click

Type	Name
Airport	EGCC
VOR	HON
Intersection	BEREK
Intersection	COVLEY
WOB	WOB
Airway	A1
Airway	A1
Intersection	BEREK

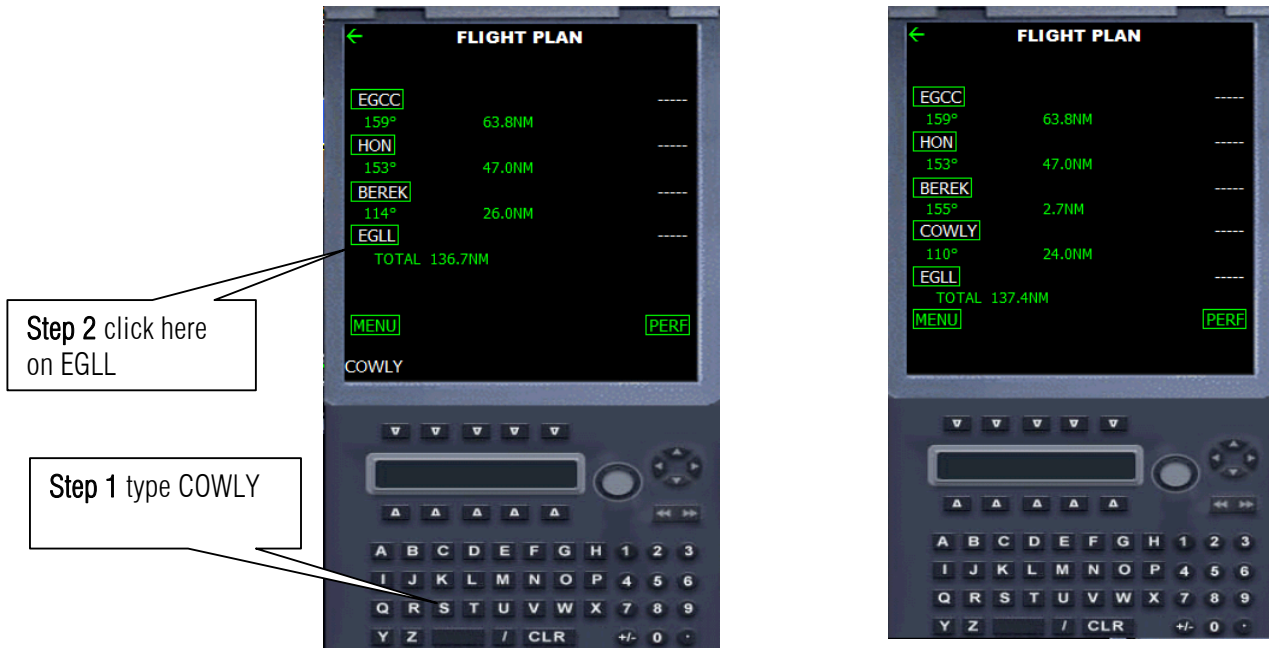
21. So the choice is

Click this

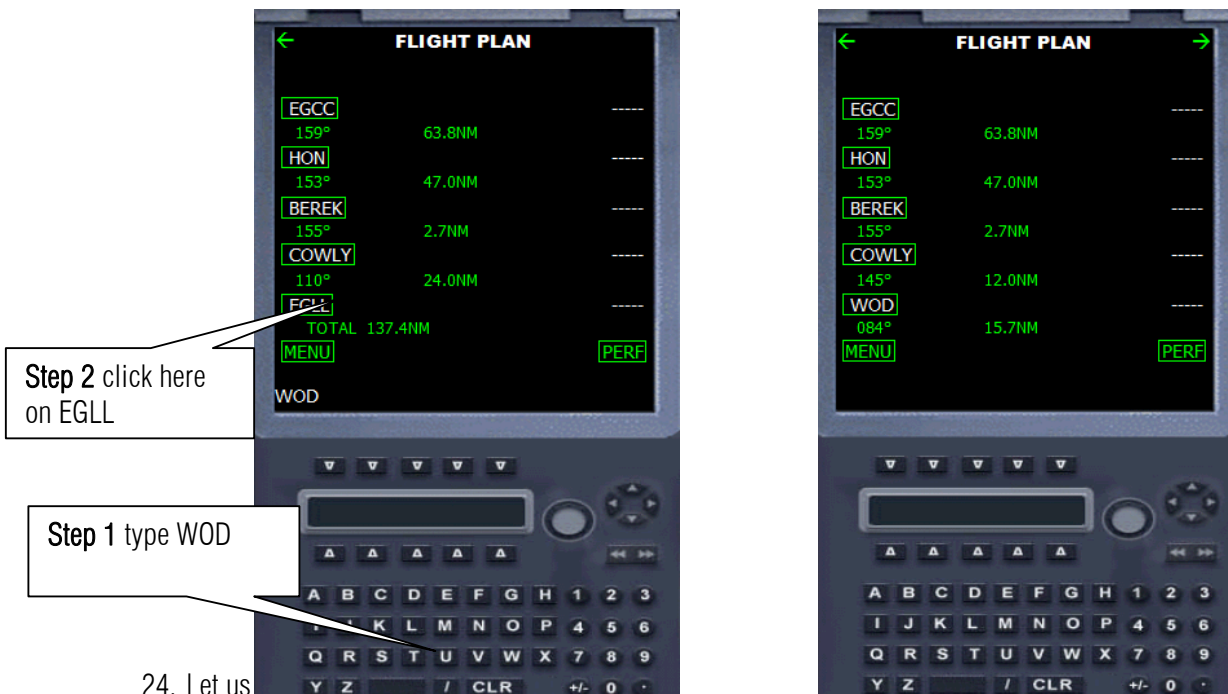
Coordinates	Name
N33°38.00 E005°00.00	BEREK
N51°39.38 W001°05.72	BEREK

Type:	Intersection
Latitude:	N51°39.37'
Longitude:	W1°05.82'

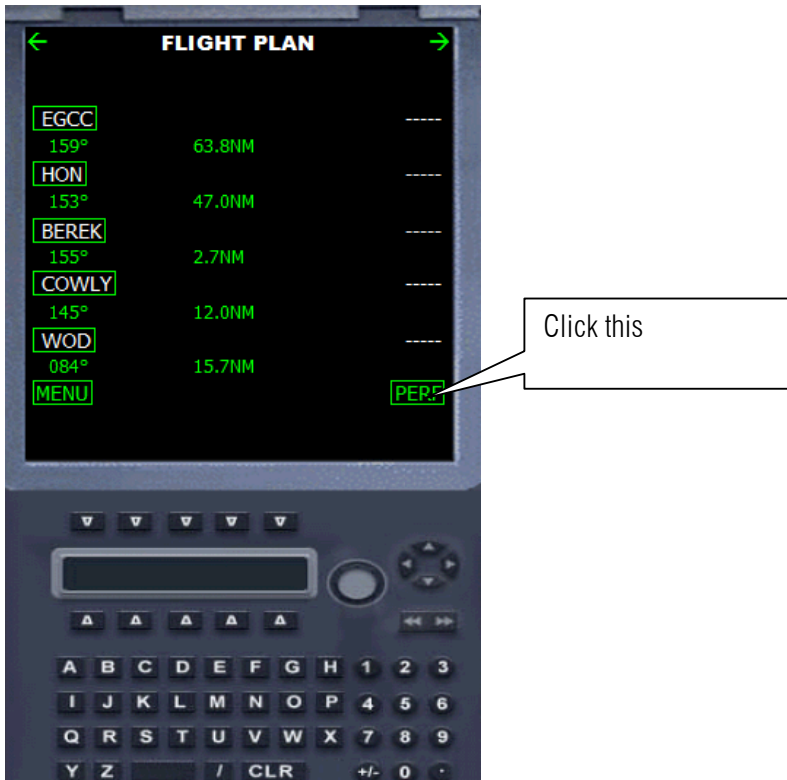
22. Then type COWLY.



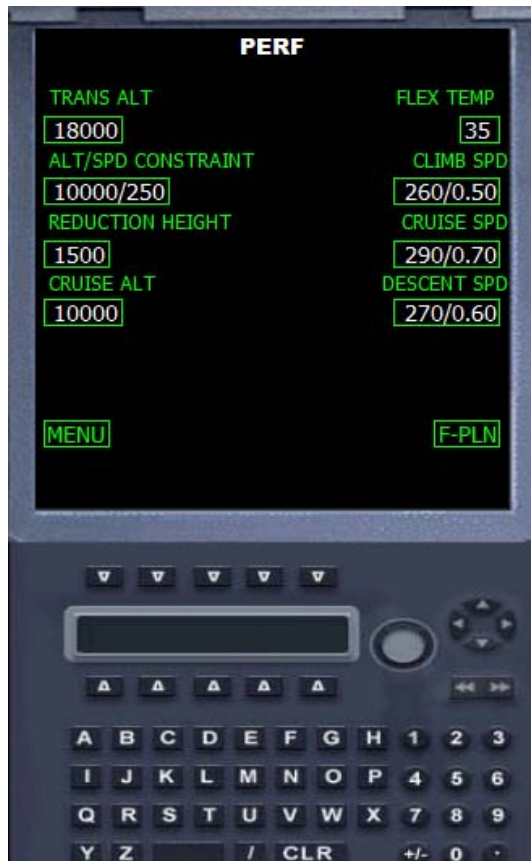
23. Let us enter the last waypoint WOD



24. Let us

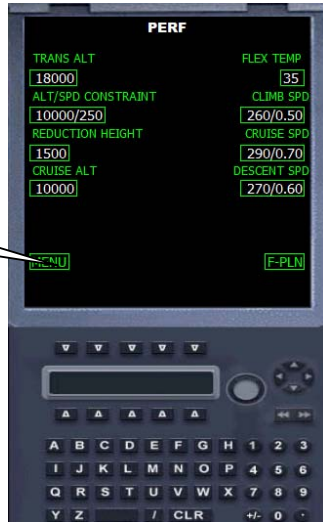


By this time you know how to enter the values so please copy the values shown below



25. Let us go to the main menu and then to our Radio Navigation.

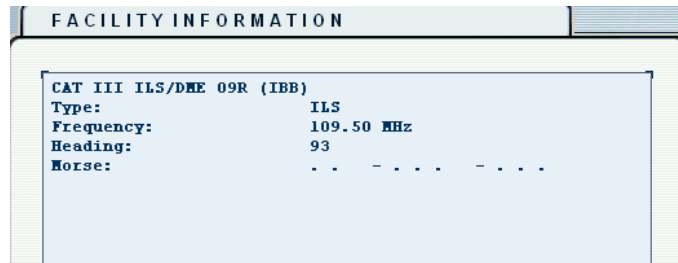
Step 1
Click
this



Step 2
Click
this



26. Looking back the way we check the Radio frequency and coordinates of HON on page 11 we so the same to look for EGLL.



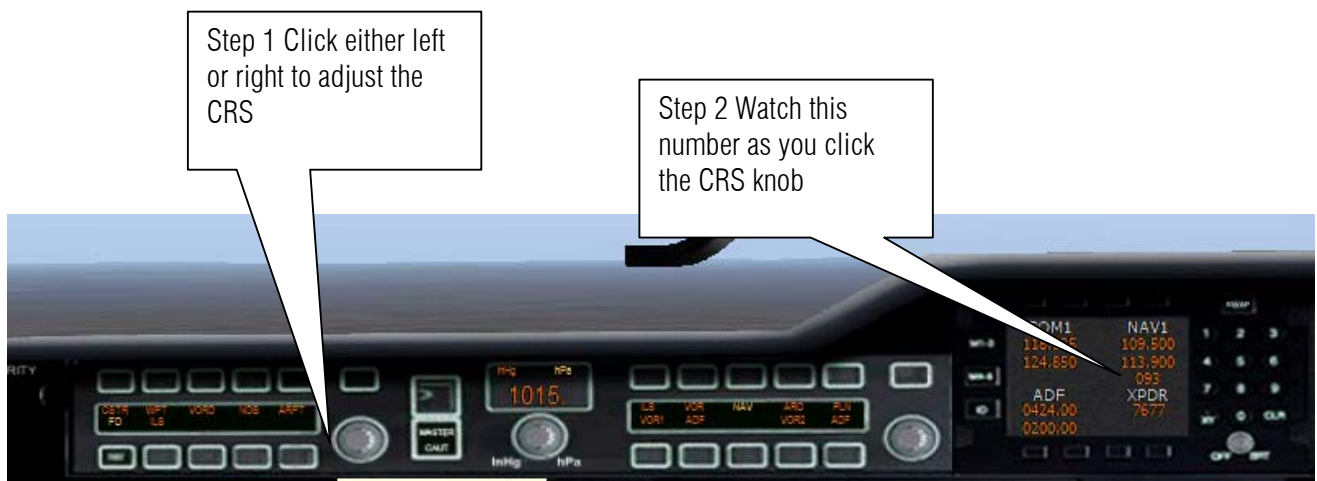
Runway 09 R frequency is 109.50 and the course heading is 093



27. Enter the correct values shown below on the ballons.



28. Now its time to enter the CRS Heading to **093**



29. Final cockpit prep.



30. Do the following as shown.



RIGHT CLICK HERE

RIGHT CLICK HERE



BEFORE



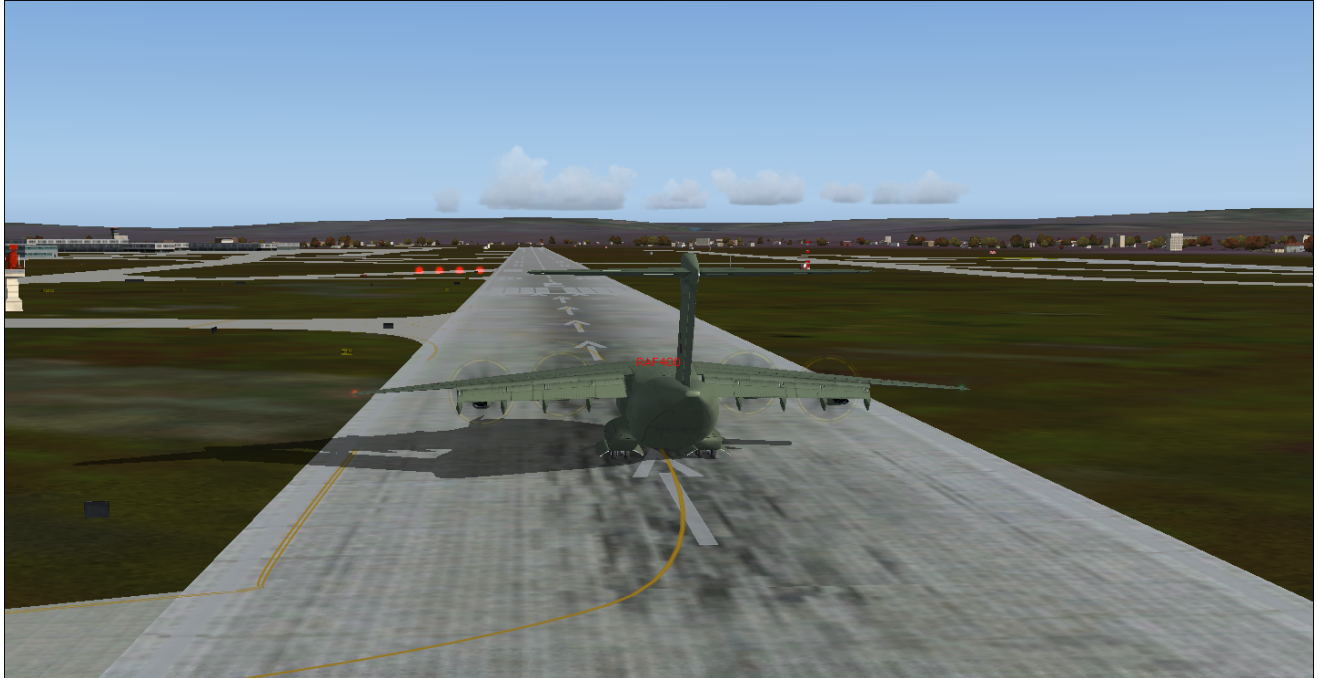
AFTER

31. Let us enter our initial altitude

CLICK here to increase number to 5000



32. Press **F7** three time to deploy the Flaps



33. Radio Tower for take off clearance.

RADIO

Army 700 , cleared for takeoff runway 6L, straight-out departure approved.

Army 700 , taxi to and hold short of runway 6L via taxiway runway 6L.
Contact tower on 118.625 when ready.

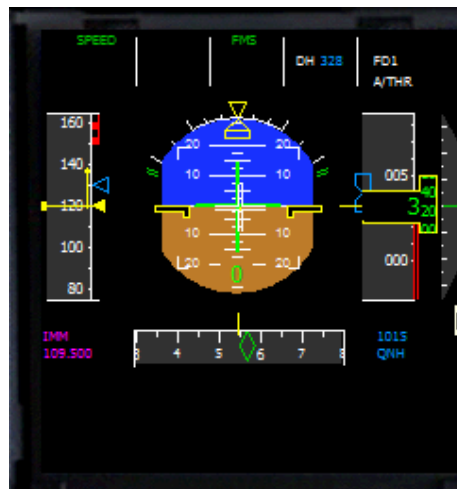
34. Press **F4** for full throttles.



35. Release the parking brake and fly!!!



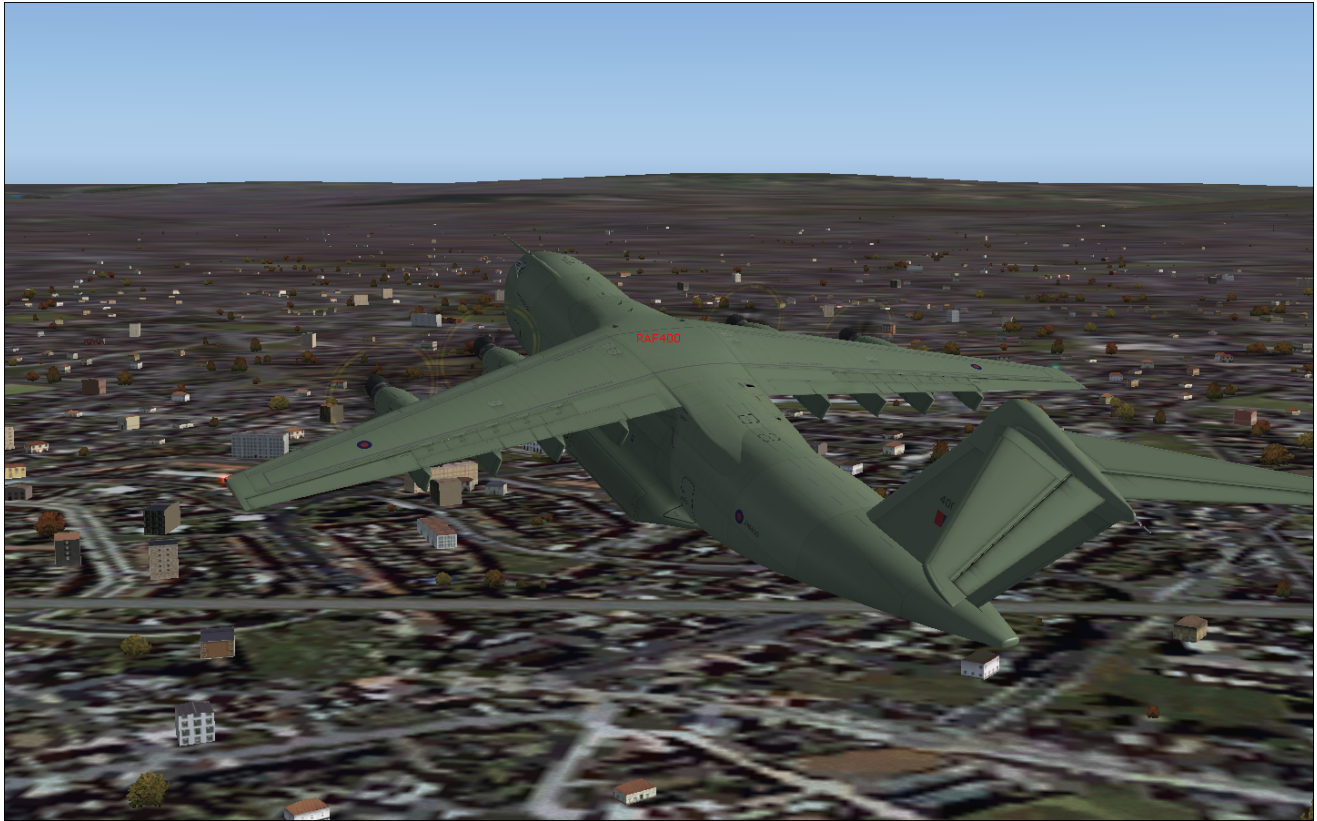
36. watch for your speed when you reach 130 knots nose up 25 degrees.



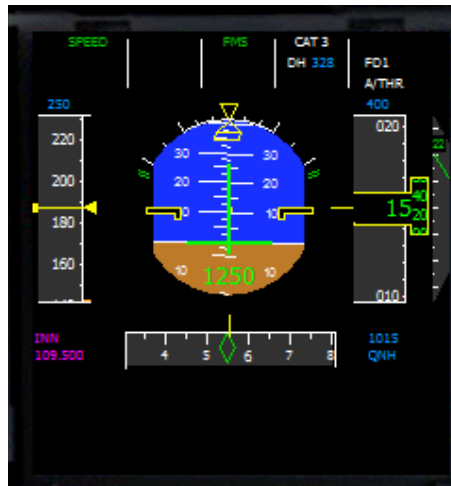
37. press G to retract the landing gear.



38. Press F5 to retract the landing Gear.



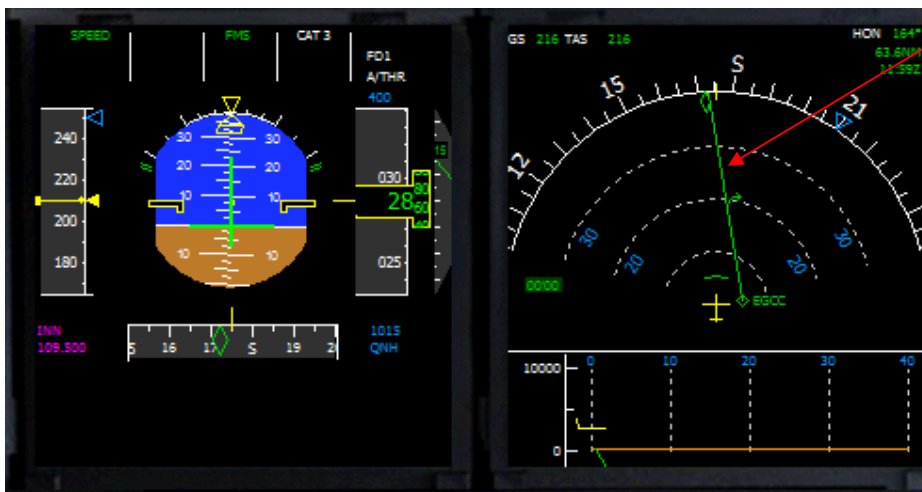
39. Maintain speed to 130 knots plus otherwise you will stall and fall to the earth. To do this go down on a degrees in the ADI.



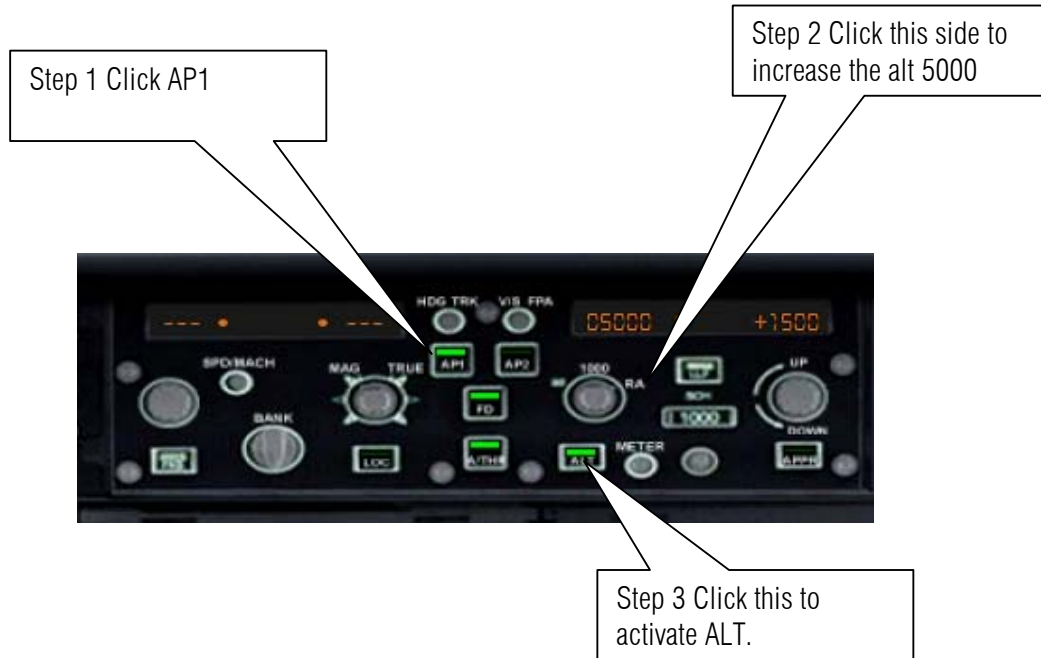
40. We must turn right the A400M toward south.



41. Now we are facing south toward EGLL and we are align towards our flight plan as shown by the green line in the navigation display. Let us engage autopilot . Press Z on the keyboard.



42. Then click altitude hold.



43. Now its climbing and turning in autopilot mode.



44. Let us maintain 5000 Ft towards BEREK.



45. As we level to 5000 ft pull back the throttles down to 80 % so we are in the Auto throttles range.



46. Talk to your co pilot on what is up tonight in London?



47. 10 mile before approaching BEREK descent to 2500 ft.

Click here to decrease number of altitude down to 2500



48. Start slowing down now



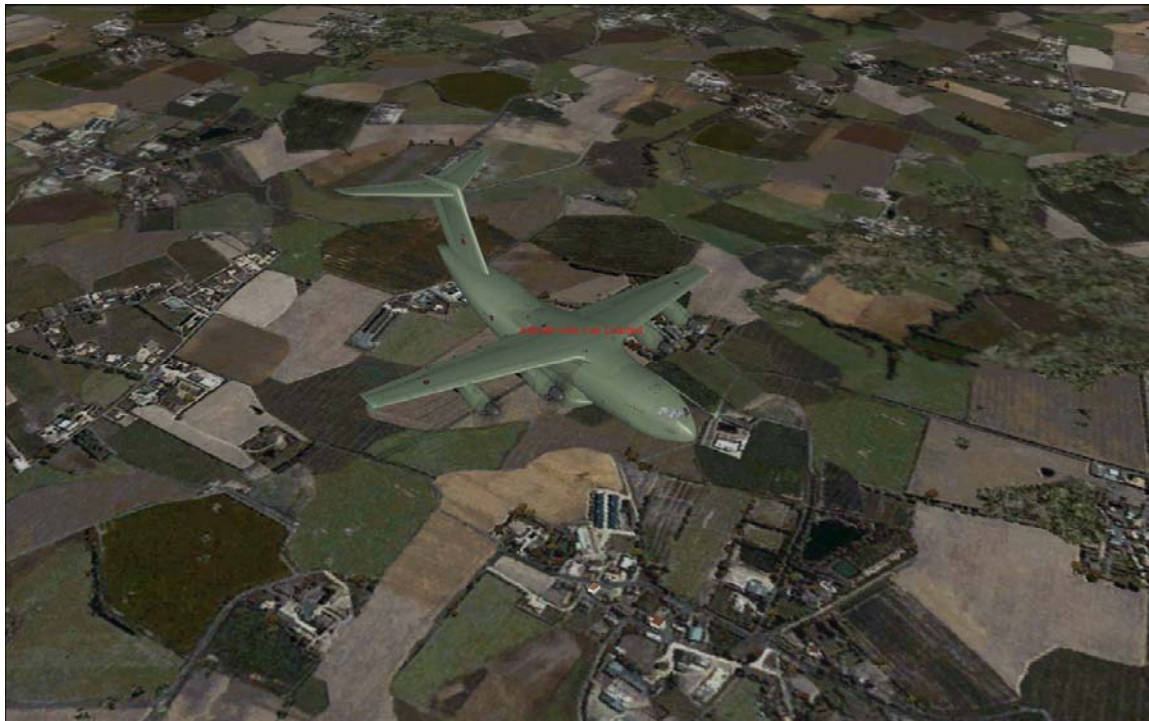
Step 1 Click this side to reduce the number to 180

49. To active the reduction of speed finally click button

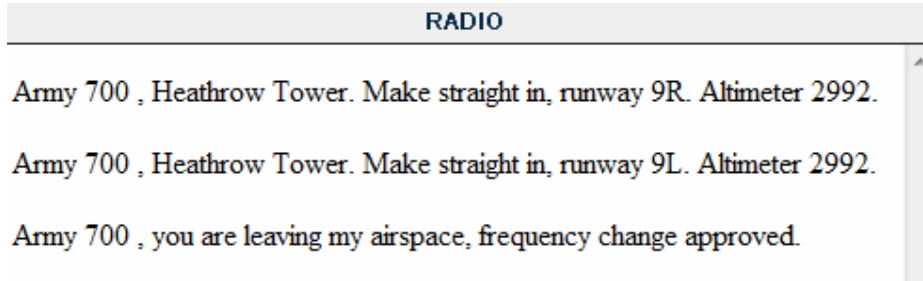


Step 1 Click the center of the knob

Let us prepare for landing let us start slowing down.



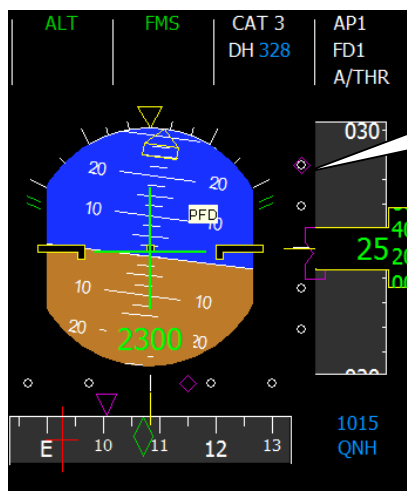
50. Call ATC that we are landing.



51. click ILS as we pass by WOD inbound to EGLL



52. We have to act fast as we are preparing to land.

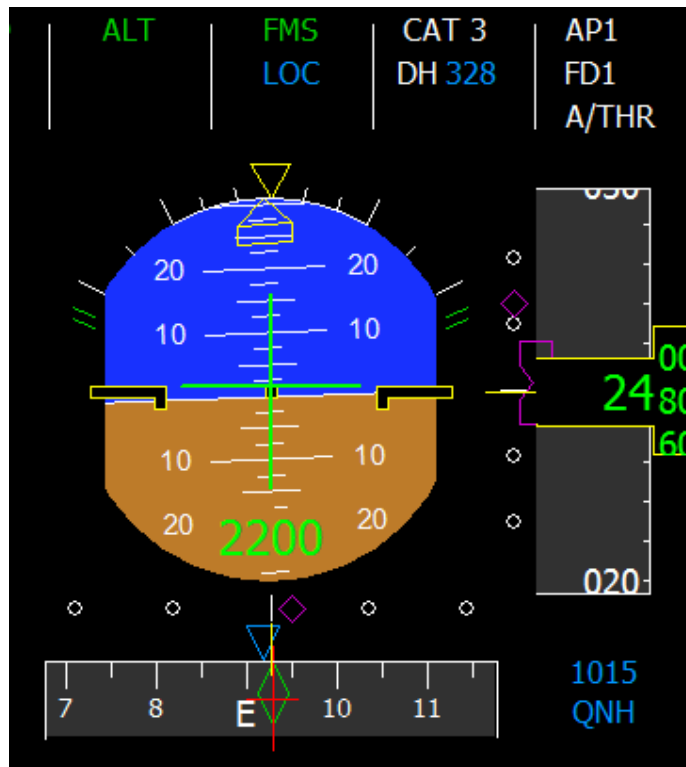


Watch the magenta diamond as it goes down to meet the horizontal line.

53. Now as we are align to the final leg let us click the localizer button.



54. Hey look back on that magenta diamond!!!

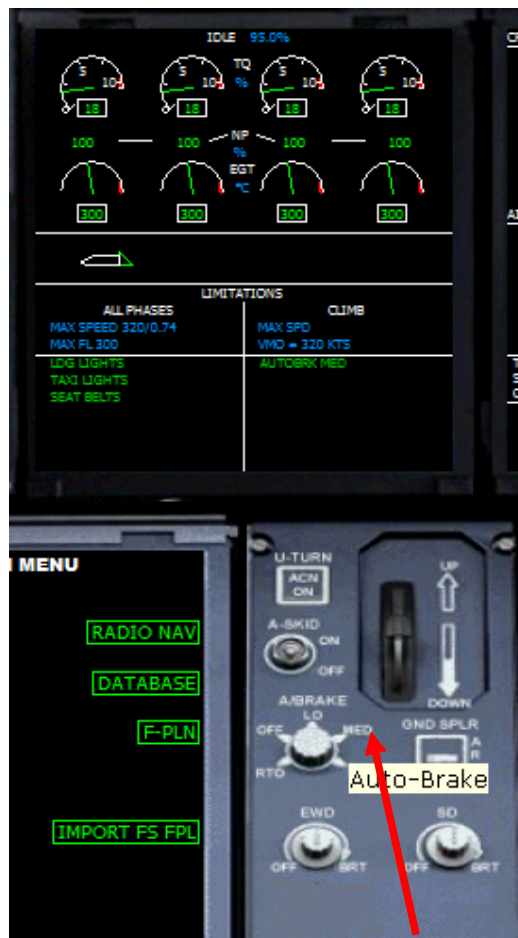


Click this now!!!

55. hit APP now!!



56. Set our brakes to med



57. Deploy the gears press **G**



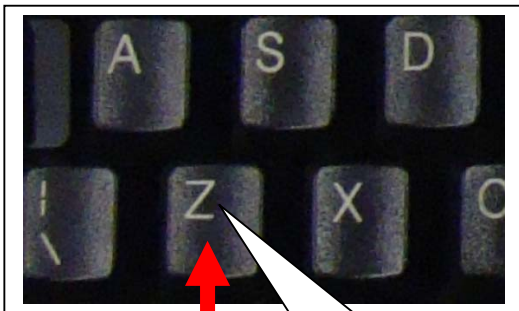
58. Press **F7** to deploy flap to help slow us down. Watch as we make a autoland.



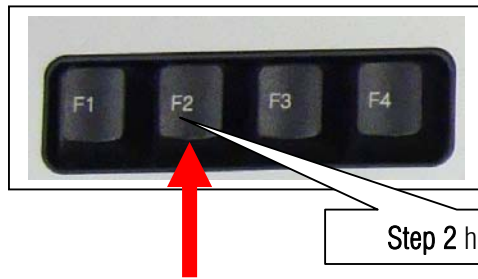
59. As we are about to land !!



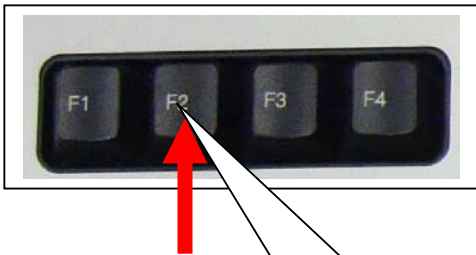
60. Do the following when you touch down!!



Step 1 hit this key



Step 2 hit this key

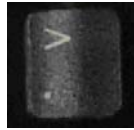


Step 3 hit this key

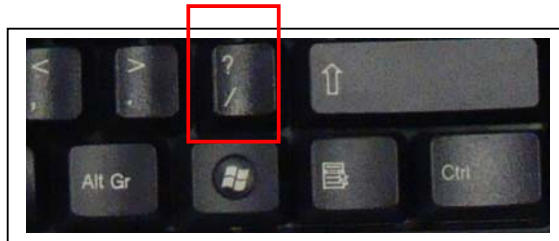


Step 4 hit this key

61. Retract the flaps by pressing **F5**. Then full stop by press. (Period)



62. Press Slash to retract the speed brakes.



63. Nice landing Captain! Call ATC for parking and gates so I can disembark and go to my daughter Bea.



I am not a A400M pilot just an airplane enthusiast so if there is a technical error my apologies. This sample flight is dedicated to my beloved daughter Beatrice Joy. Many thanks to Mr. Christophe Modave. Thank you to **Wilco Publishing**



Recommended Software.

