

## V.C. Bird International Antigua Airport

[V. C. Bird International Airport](#) is an international airport located on the island of Antigua, 8 km (5.0 mi) northeast of St. John's, the capital of Antigua and Barbuda.

### General information

ICAO:	<b>TAPA</b>
IATA:	ANU
Time zone:	UTC-4 (standard time)
Latitude:	17° 08' 27.99" N
Longitude:	61° 47' 08.01" W
Elevation:	62 ft
Transition Altitude:	<b>2,500 ft</b>
Transition level:	FL040
VC BIRD VOR:	<b>ANU</b> 114.5
VC BIRD NDB:	<b>ZDX</b> 369

**No VFR traffic at night.**

## Communications

Name		Frequency
<b>TTPP_ATIS</b>	VC BIRD Atis	<b>114.500</b>
<b>TTPP_GND</b>	VC BIRD Ground	<b>121.900</b>
<b>TTPP_TWR</b>	VC BIRD Tower	<b>118.200</b>
<b>TTPP_APP</b>	VC BIRD Approach	<b>119.100</b>
<b>TTZP_CTR</b>	PIARCO Radar	<b>123.700</b>
<b>TTZP_S_CTR</b>	PIARCO South Radar	<b>125.400</b>

## Runways

RWY	QFU	LDA	TORA
<b>07</b>	073°	8327 feet/2538 m	8983 feet/2738 m
<b>25</b>	253°	8983 feet/2738 m	8999 feet/2538 m

## Approaches

### **Runway 07**

RNAV RWY 07

12 DME ARC RWY 07

VOR DME RWY 07

VOR RWY 07

## Runway 25

12 DME ARC RWY 25

VOR DME RWY 25

VOR DME RWY25

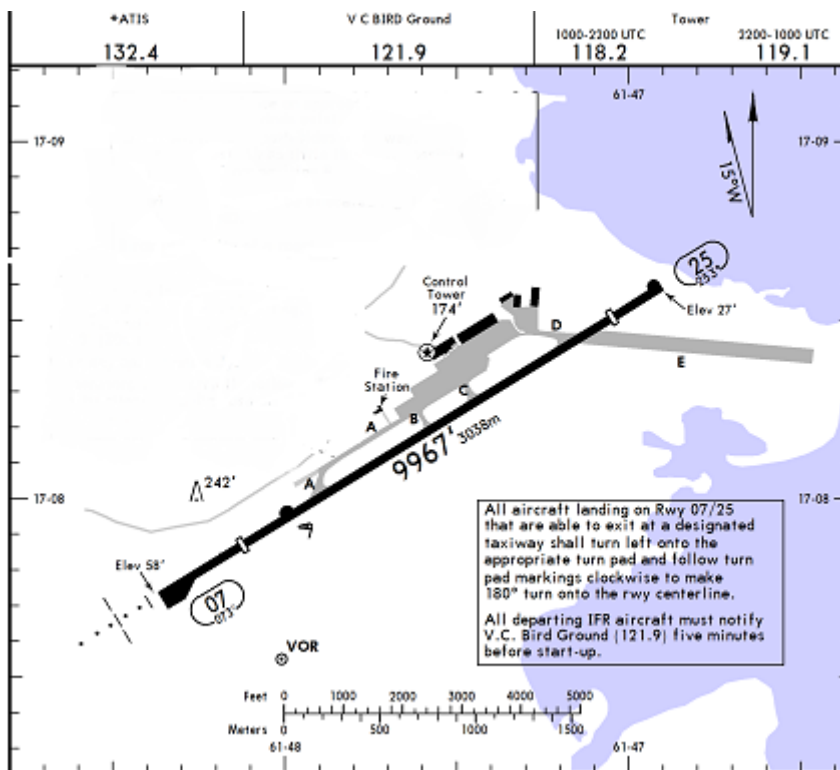
VOR RWY 25

NDB-A

## Airport and parking gates

VC Bird has a 9,967ft (3,038m) runway able to accommodate most international wide-body airliners.

The airport layout consists of one main ramp to the North connecting the runway with 4 taxiways.



All departing IFR traffic should notify VC Bird GND, at the least 5 minutes before starting up.

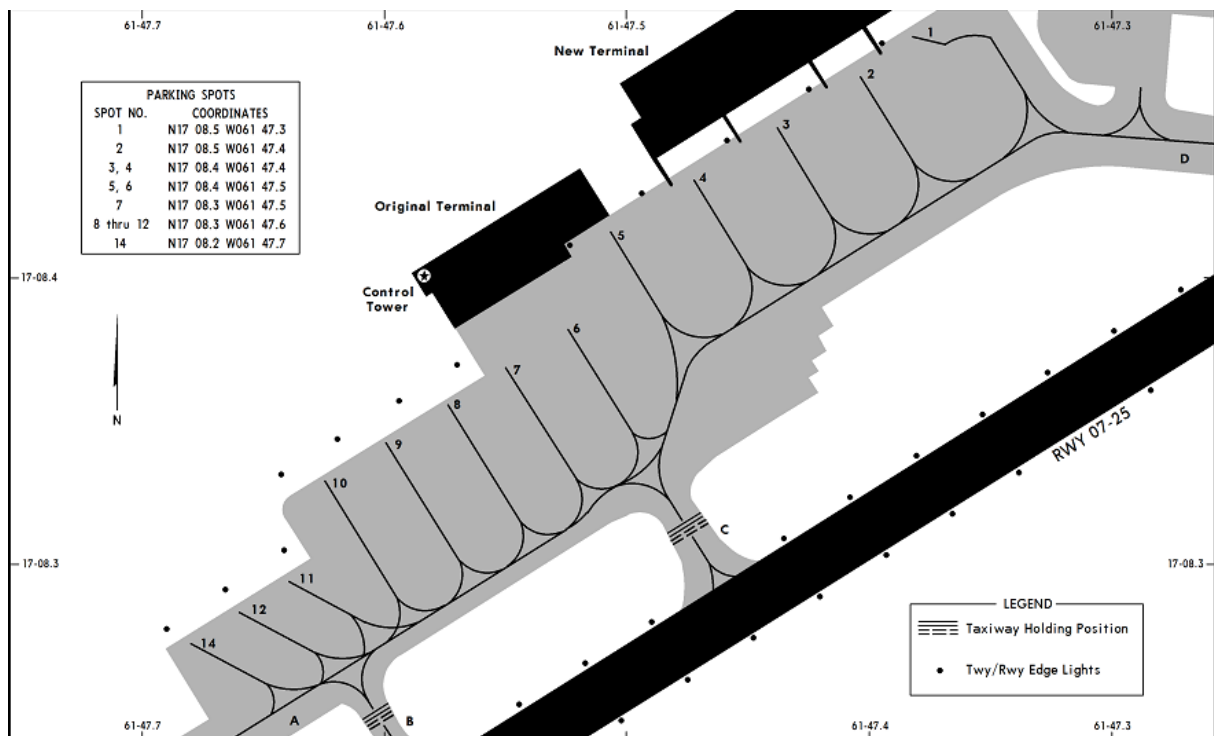
Pilots should be caution on approach to runway 07 and expect turbulence when winds are from the East or South East.

Arriving aircraft provided they have the appropriate scenery will be allocated a gate number by GND or TWR.

### Taxiway A restrictions:

Taxiway A is for day operations only. It is also limited to aircraft with a maximum take-off weight of 65,000lbs (29,500kg) or less and a wing span of 100 feet (30m) or less.

In this case up to the Dash8 Q400 with the MTOW of 65000lbs or less.



When taxiing from position 8, pilots must use idle power.

## **Departures**

### **Piarco departure procedure runway 07**

No restrictions unless specific instructions given by online ATC.

### **Piarco departure procedure runway 25**

No restrictions unless specific instructions given by online ATC.

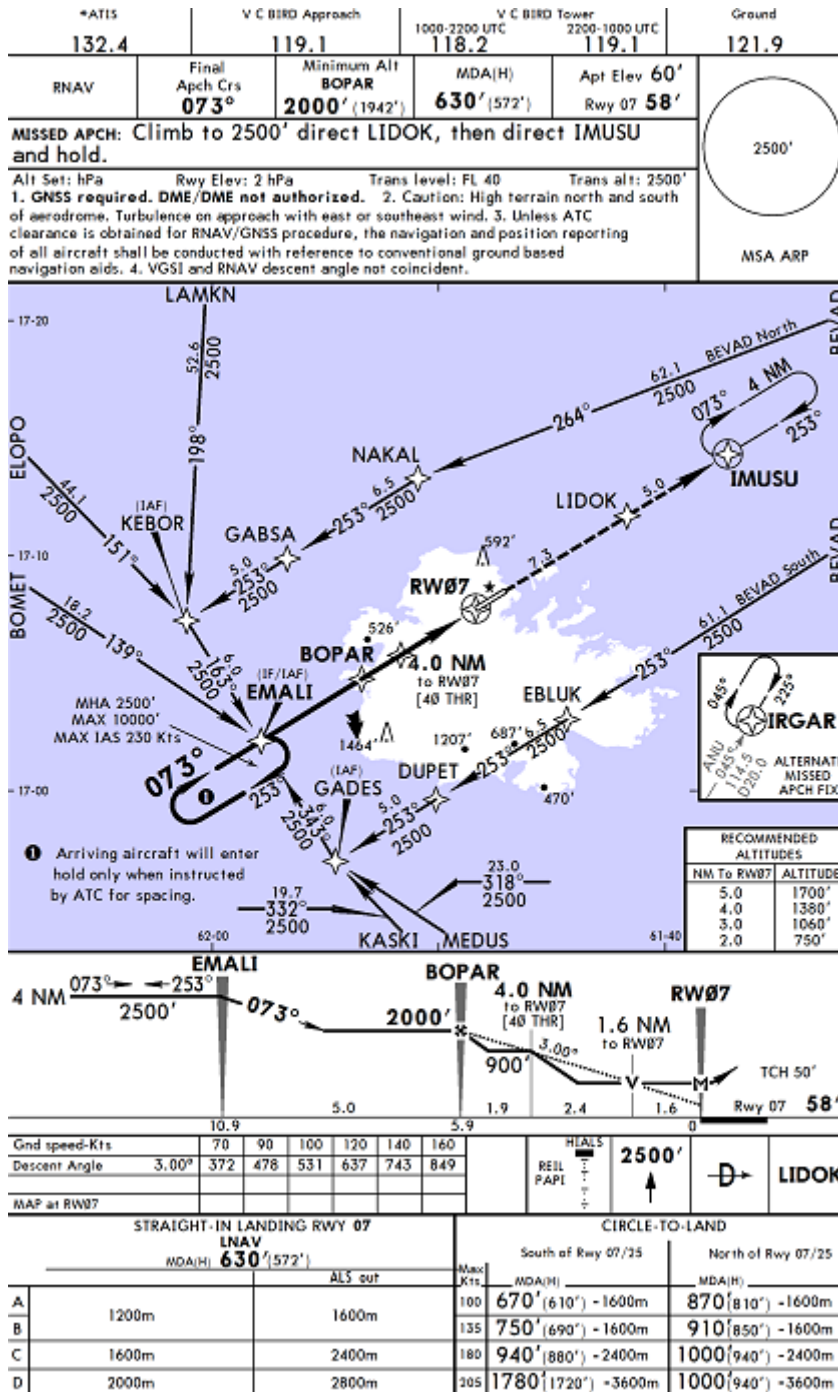
*Note: VC Bird doesn't offer any Standard Instrument Departures (SID).*

## **VC Bird arrival approaches**

VC Bird doesn't have any radar services thus pilots should expect procedural approaches.

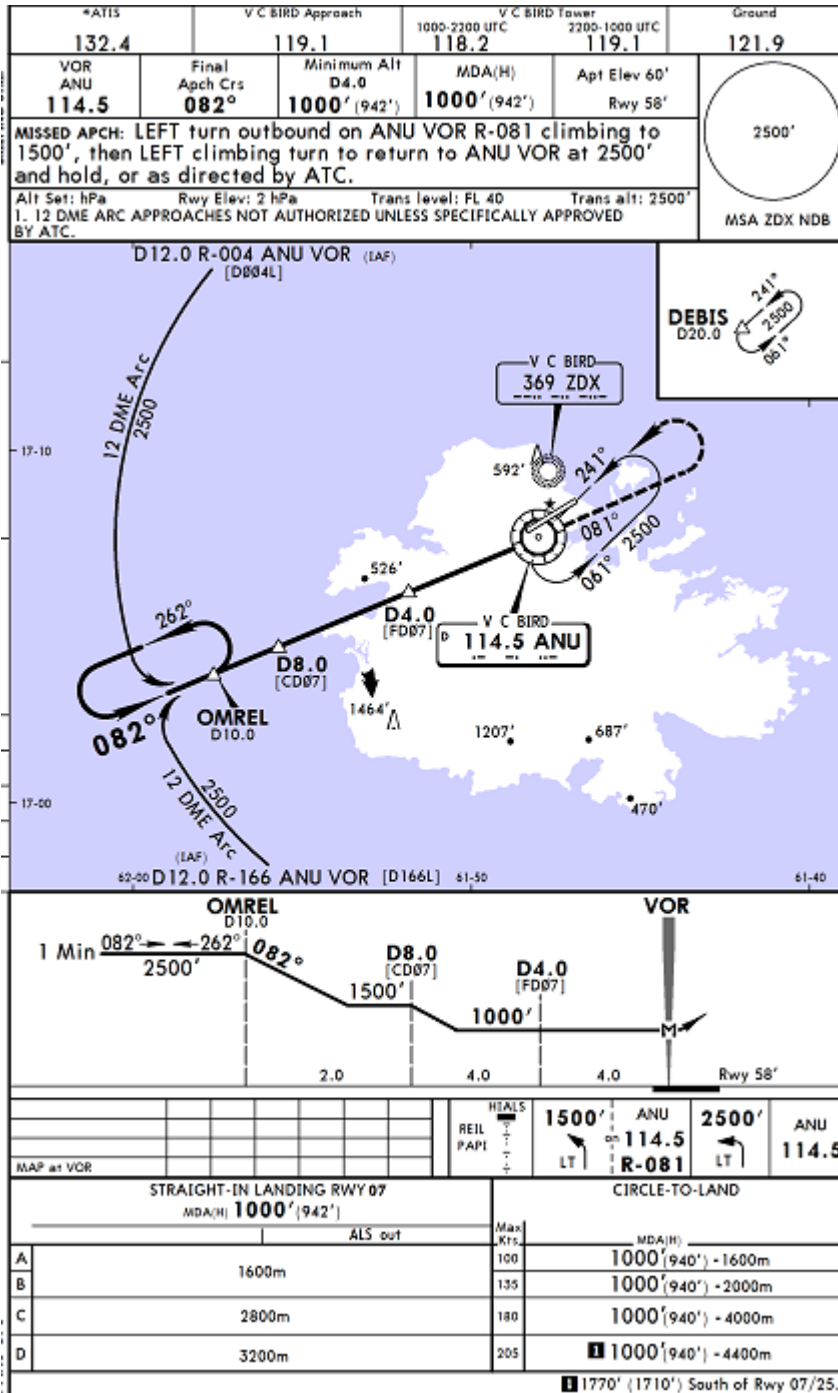
# RNAV RWY 07

Pilots should expect to report at positions **EMALI** and or **BOPAR** before landing clearance for runway 07.



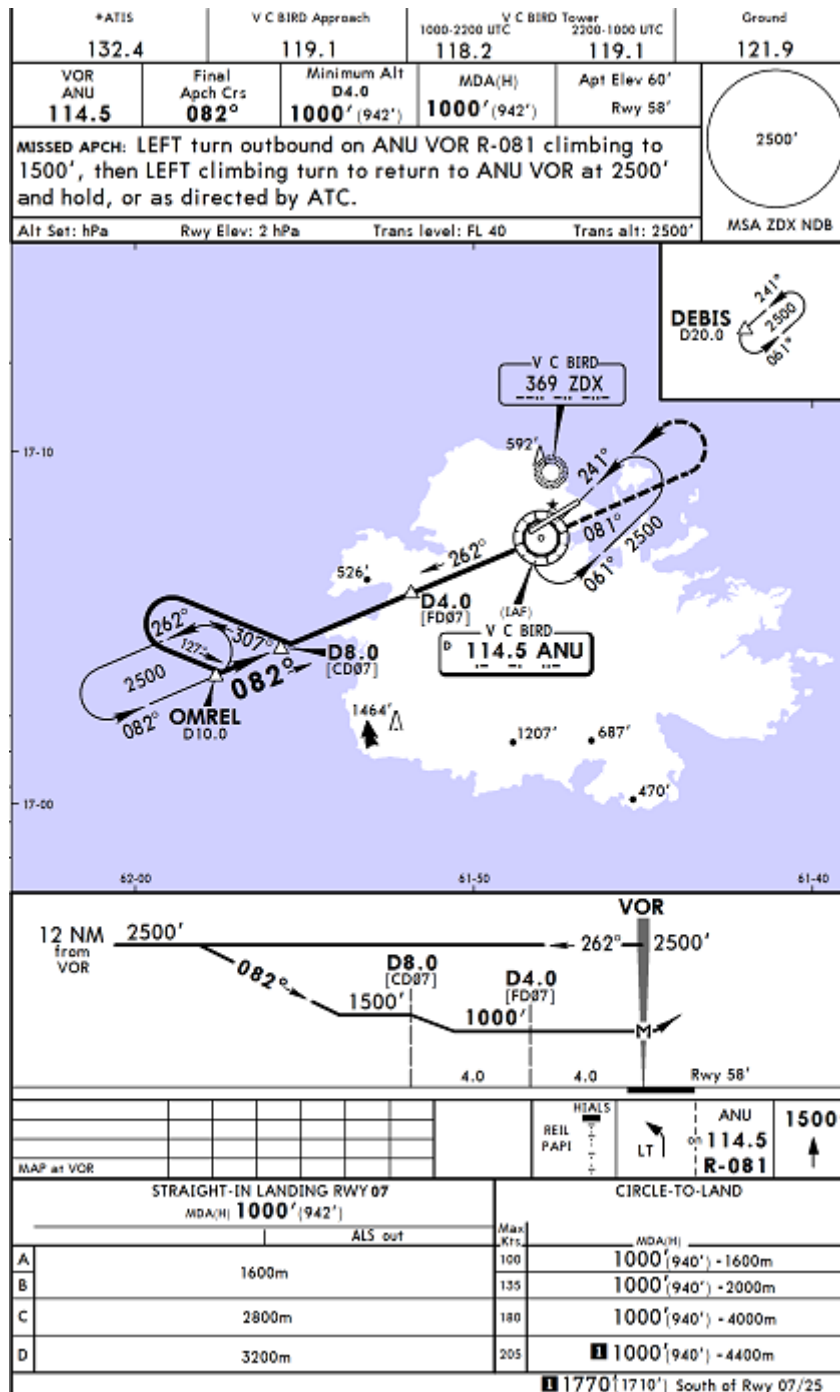
# 12 DME ARC RWY 07

Pilots should expect to report at position OMREL then or DME from ANU before getting landing clearance to runway 07.



# VOR DME RWY 07

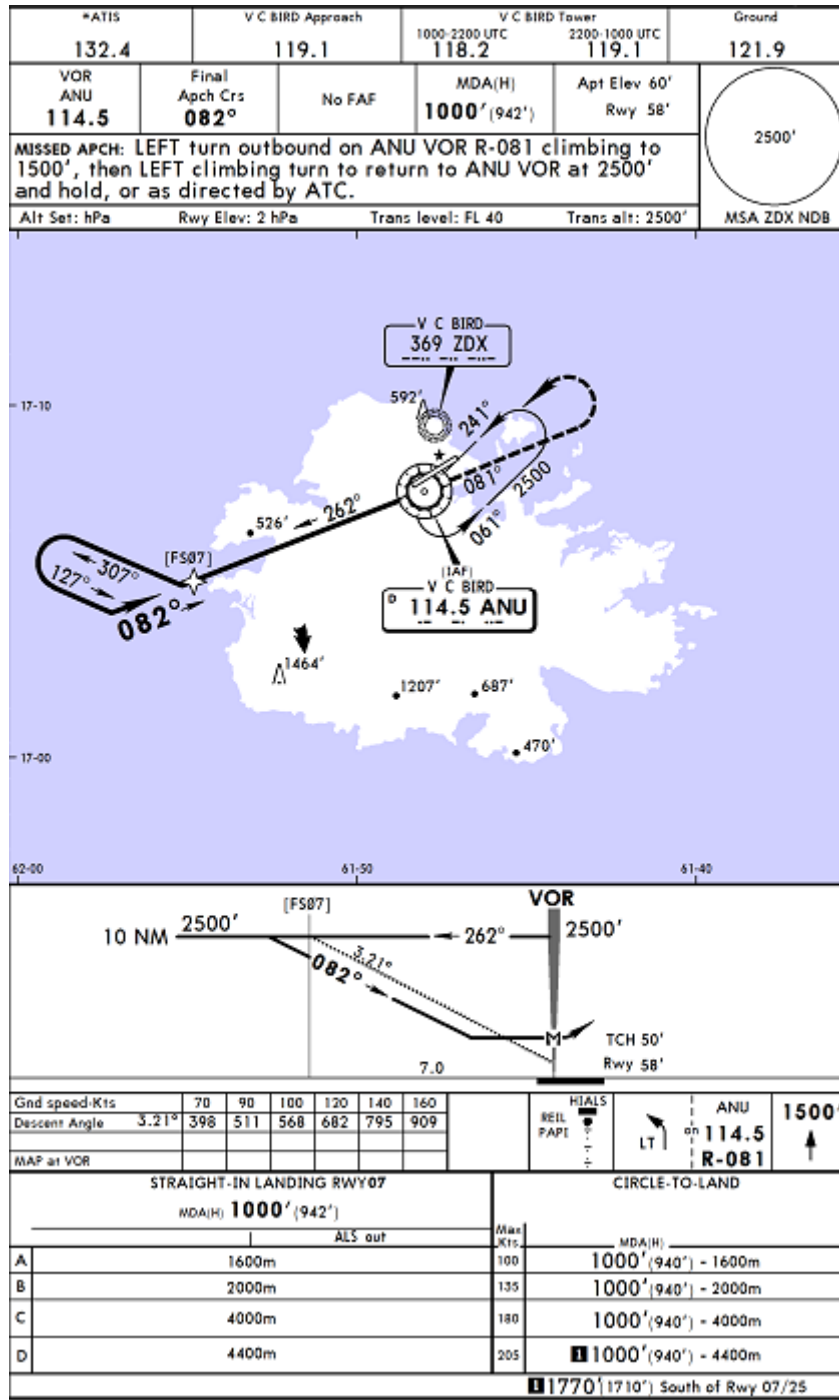
Pilots should expect to report at position ANU then turning inbound runway 07 getting landing clearance to runway 07.





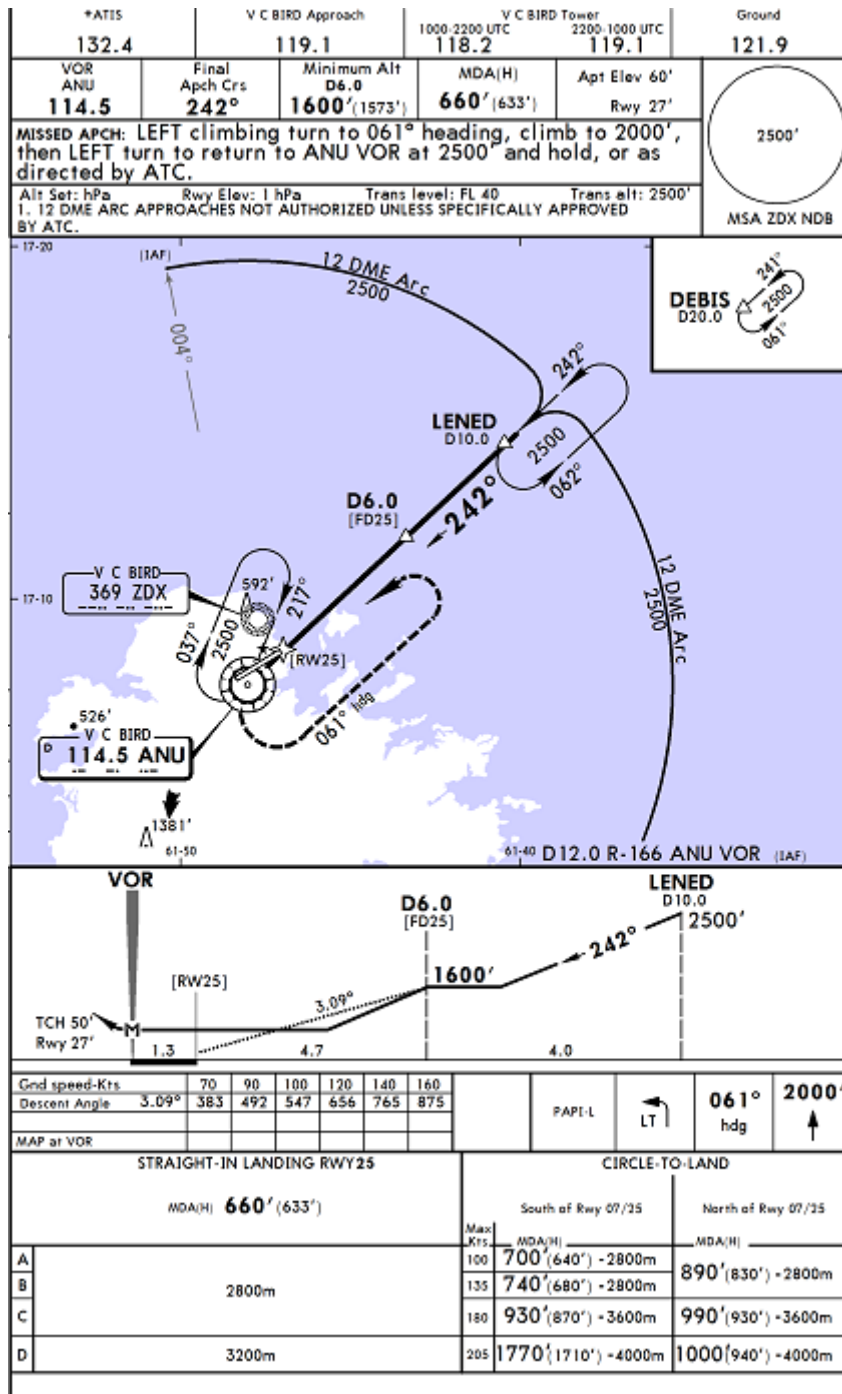
# VOR RWY 07

Pilots should expect to report at position ANU then turning inbound runway 07 before expecting landing clearance to runway 07.



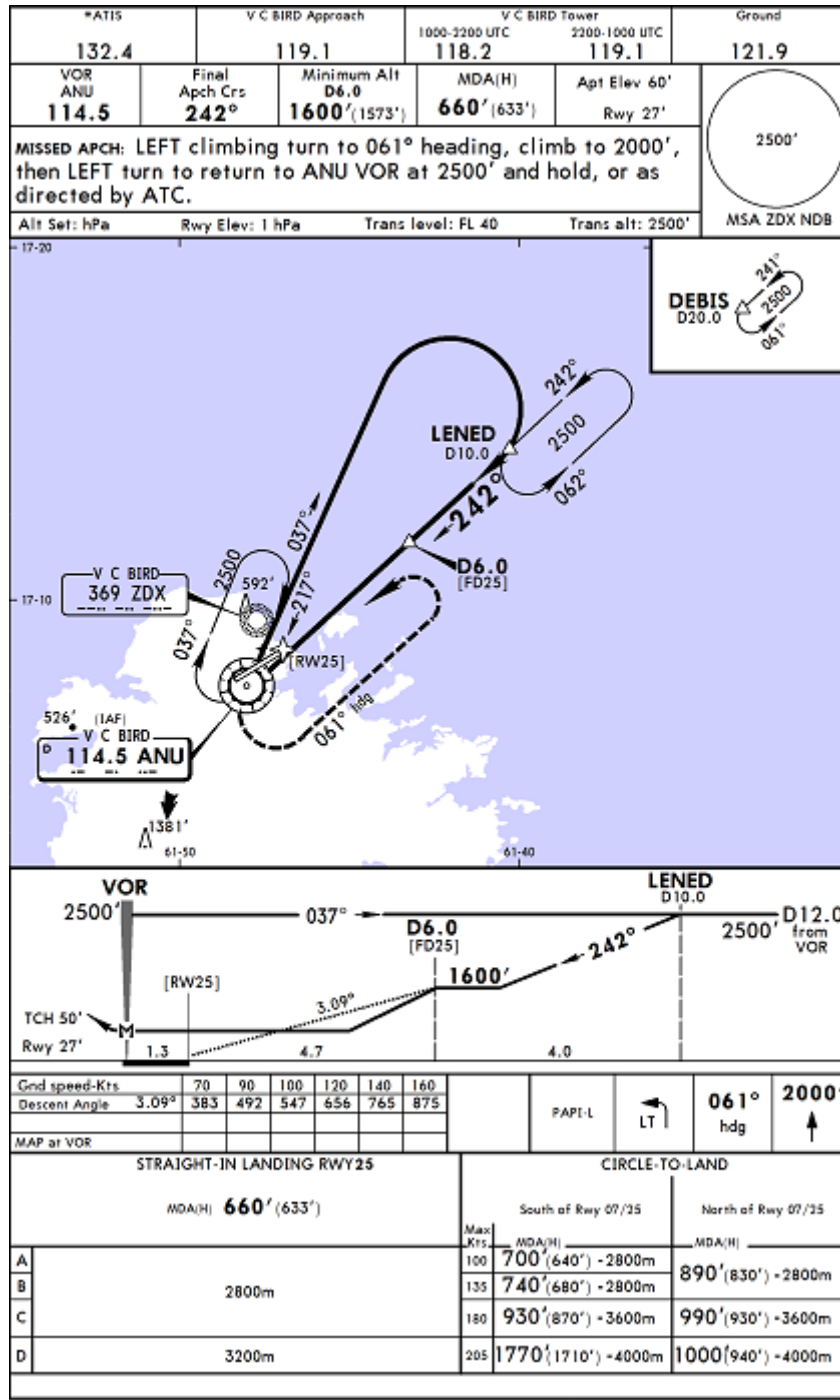
# 12 DME ARC RWY 25

Pilots should expect to report at position **LENED** before expecting landing clearance to runway 25.



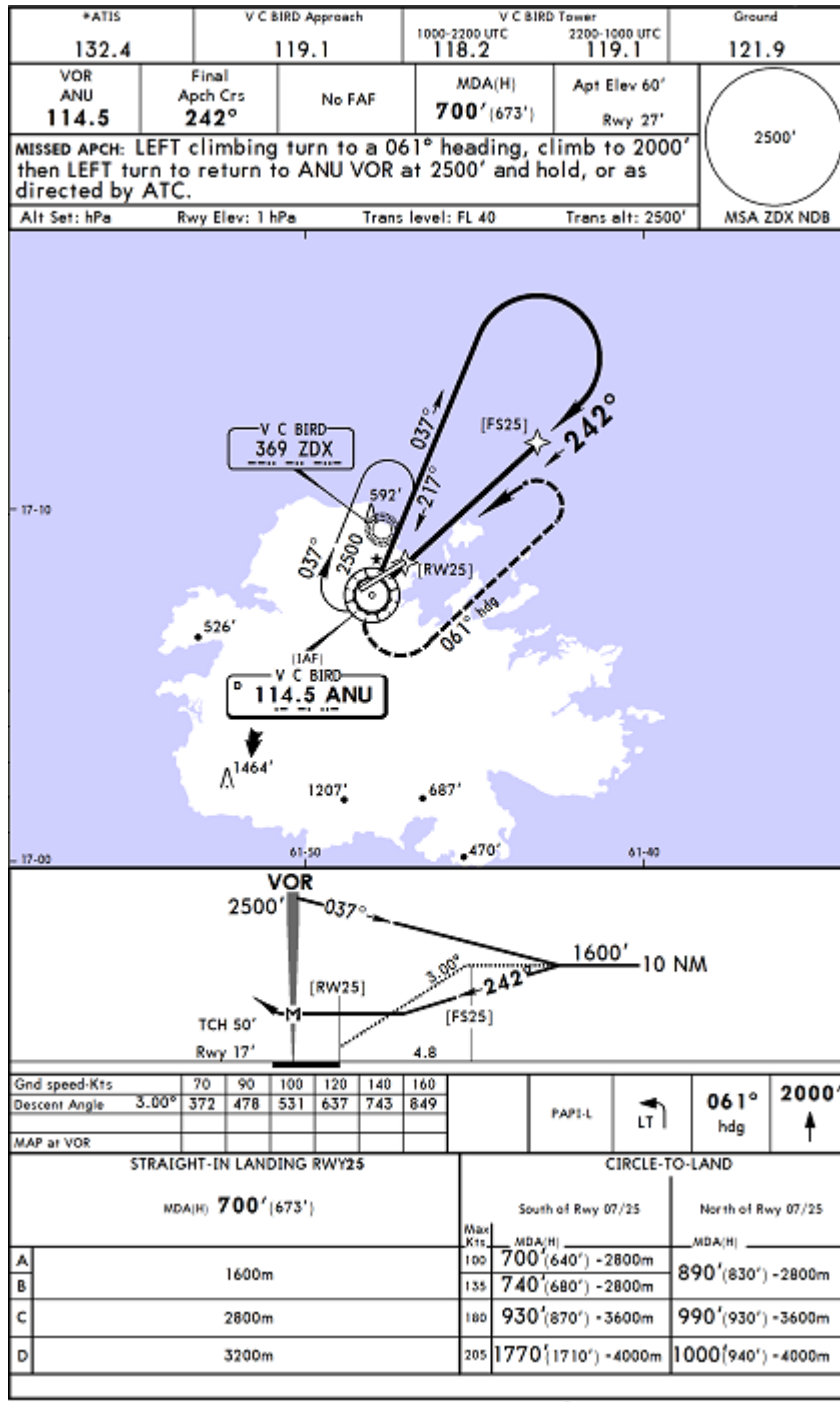
# VOR DME RWY 25

Pilots should expect to report at position ANU then turning inbound runway 07 getting landing clearance to runway 07.




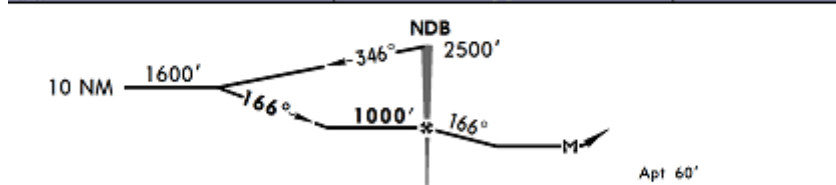
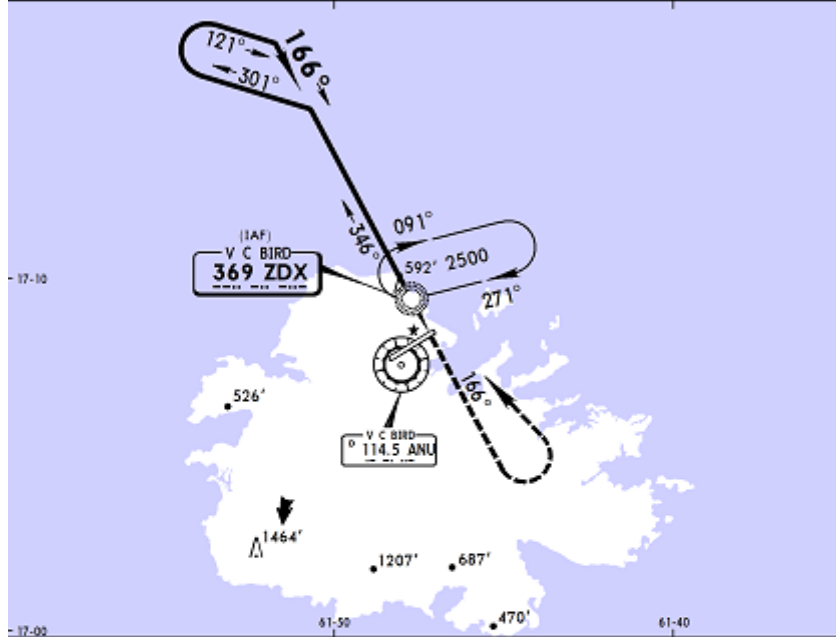
# VOR RWY 25

Pilots should expect to report at position ANU then turning inbound runway 07 before expecting landing clearance to runway 25.



# NDB – A

*ATIS <b>132.4</b>	V C BIRD Approach <b>119.1</b>	V C BIRD Tower 1000-2200 UTC <b>118.2</b>	2200-1000 UTC <b>119.1</b>	Ground <b>121.9</b>
NDB ZDX <b>369</b>	Final Apch Crs <b>166°</b>	Minimum Alt NDB <b>1000'</b> (940')	MDA(H) Refer to Minimums	Appt Elev <b>60'</b>
<b>MISSED APCH: Climb to 2500' on 166°, LEFT turn direct to ZDX NDB and hold, or as directed by ATC.</b>				
Alt Set: hPa	Appt Elev: 2 hPa	Trans level: FL 40	Trans alt: 2500'	



Gnd speed-Kts	70	90	100	120	140	160	Lighting - Refer to Airport Chart	2500' ↑ on 166°
NDB to MAP	1.2	1:02	0:48	0:43	0:36	0:31		

CIRCLE-TO-LAND			
Max Kts	South of Rwy 07/25		North of Rwy 07/25
	MDA(H)		MDA(H)
A 100	<b>700'</b> (640') - 1600m		<b>890'</b> (830') - 1600m
B 135	<b>740'</b> (680') - 1600m		
C 180	<b>930'</b> (870') - 2800m		<b>990'</b> (930') - 2800m
D 205	<b>1770'</b> (1710') - 3600m		<b>1000'</b> (940') - 3600m

## Holding procedures at VC Bird

In the event of ATC needing to hold traffic, pilots can usually expect to be hold at the ANU VOR (VC Bird) on at left hand circuit.

There are other fixes used for holding traffic depending on the type of approach in use:

- EMALI for the RNAV 07
- OMREL for the VOR DME 07
- LENED for the VOR DME 25

## ATC Clearances at Piarco

VC Bird Air Traffic Zone (ATZ) is a **class E** airspace from ground up to 3000 ft.

**IFR and SVFR flights are subject to ATC clearance.**

At VC Bird, the IFR clearance is simple. It is a modified CRAFT method, where the departure frequency is omitted from the clearance.

Pilots should not expect to get a transponder code as VC Bird is non-radar.

Here is an example of an ATC IFR clearance at VC Bird:

**TAPA\_GND:** LIAT 310, clear to Juliana via L451 PJM, FL100, right turn after departure.

## Airlines and destinations

### Passenger

#### Air Canada – **ACA** – Air Canada

Toronto–Pearson **CYYZ**

#### American Airlines – **AAL** - American

Miami **KMIA**, New York **KJFK**

Seasonal: Charlotte **KCLT**

#### British Airways – **BAW** - SpeedBird

London–Gatwick **EGKK**, St Kitts **TKPK**, Punta Cana **MDPJ**, Providence **MBPV**

#### Caribbean Airlines – **BWA** – Caribbean Airlines

Kingston–Norman Manley **MKJP**, Port-of-Spain **TTPP**

#### Condor – **CFG** - Condor

Seasonal: Frankfurt **EDDF**

#### Copa Airlines– **CMP** - Copa

Panama City **MPTO**

#### Eurowings – **EWG** - Eurowings

Seasonal Charter: Düsseldorf **EDDL** (begins 19 November 2018), Munich **EDDM** (begins 22 November 2018)

**JetBlue Airways – JBU - Jetblue**

Fort Lauderdale **KFLL**, New York **KJFK**

Seasonal: Newark **KEWR**

**LIAT – LIA - Liat**

Barbados **TBPB**, Dominica–Douglas/Charles **TDPD**, Pointe-à-Pitre **TFFR**, Port of Spain **TTPP**, Saint Kitts **TKPK**, Saint Lucia–Vigie **TLPC**, Saint Vincent-Argyle **SYEC**, San Juan **TJSJ**, Sint Maarten **TNCM**, St. Thomas **TISX**, Tortola **TUPJ**

**Thomas Cook Airlines– TCX – Thomas Cook**

Seasonal: London–Gatwick **EGKK**, Manchester **EGCC**

**Delta Air Lines - DEL- Delta**

New York **KJFK** (begins 22 December 2018)

Seasonal: Atlanta **KATL**

**FlyMontserrat - MTN - Montserrat**

Barbuda **TBPB**, Montserrat **TRPG**, Nevis **TKPN**

**InterCaribbean Airways - IWY - Islandways**

Tortola **TUPJ**

**Neos- NOS - Moonflower**

Seasonal: Milan–Malpensa **LIMC**

**Seaborne Airlines- SBS - Seaborne**

Seasonal: Milan–Malpensa **LIMC**

**Sky High Aviation Services- SHH - SkyHigh**

Santo Domingo-Las Americas **MDSD**



**Sunwing Airlines- SWG- Sunwing**

Montréal–Trudeau **CYUL**, Toronto–Pearson **CYYZ**

**St Barth Commuter- SBU - BlackFin**

Saint Barthelemy **TFFJ**

**Tradewind Aviation- GPD - Goodspeed**

Saint Barthelemy **TFFJ**

**United- UAL - United**

Newark **KEWR**

**St Barth Commuter- SBU - BlackFin**

Saint Barthelemy **TFFJ**

**TUI Airways- TOM - Tomjet**

Seasonal: London–Gatwick **EGKK**, Manchester **EGCC**

**Virgin Atlantic- VIR - Virgin**

London-Gatwick **EGKK**, Manchester **EGCC**

Seasonal: London-Heathrow **EGLL**

**WestJet- WJA - Westjet**

Toronto–Pearson **CYYZ**

## Cargo

### Amerijet International - **AJT** - Amerijet

Dominica–Douglas/Charles **TDPD**, Miami **KMIA**, Santiago de los Caballeros **MDST**, St. Maarten **TNCM**

### Ameriflight – **AMF** - Amflight

San Juan **TJSJ**

### ABX Air - **ABX** - Abex

Barbados **TBPB**, Georgetown–Cheddi Jagan **SYCJ**, Miami **KMIA**

### Kingfisher Air Services - **BEZ** – Seabreeze

San Juan **TJSJ**, St. Maarten **TNCM**

### Mountain Air Cargo - **MTN** - Mountain

San Juan **TJSJ**, Dominica-Douglas–Charles **TDPD**

## SCENERIES FOR YOUR SIM

### **XPLANE:**

<https://forums.x-plane.org/index.php?/files/file/38943-tapa-v-c-bird-international-antigua/>

### **FSX/P3D**

<https://secure.simmarket.com/tropicals-sim-antigua-2017-tapa-fsx-p3d.phtml>

