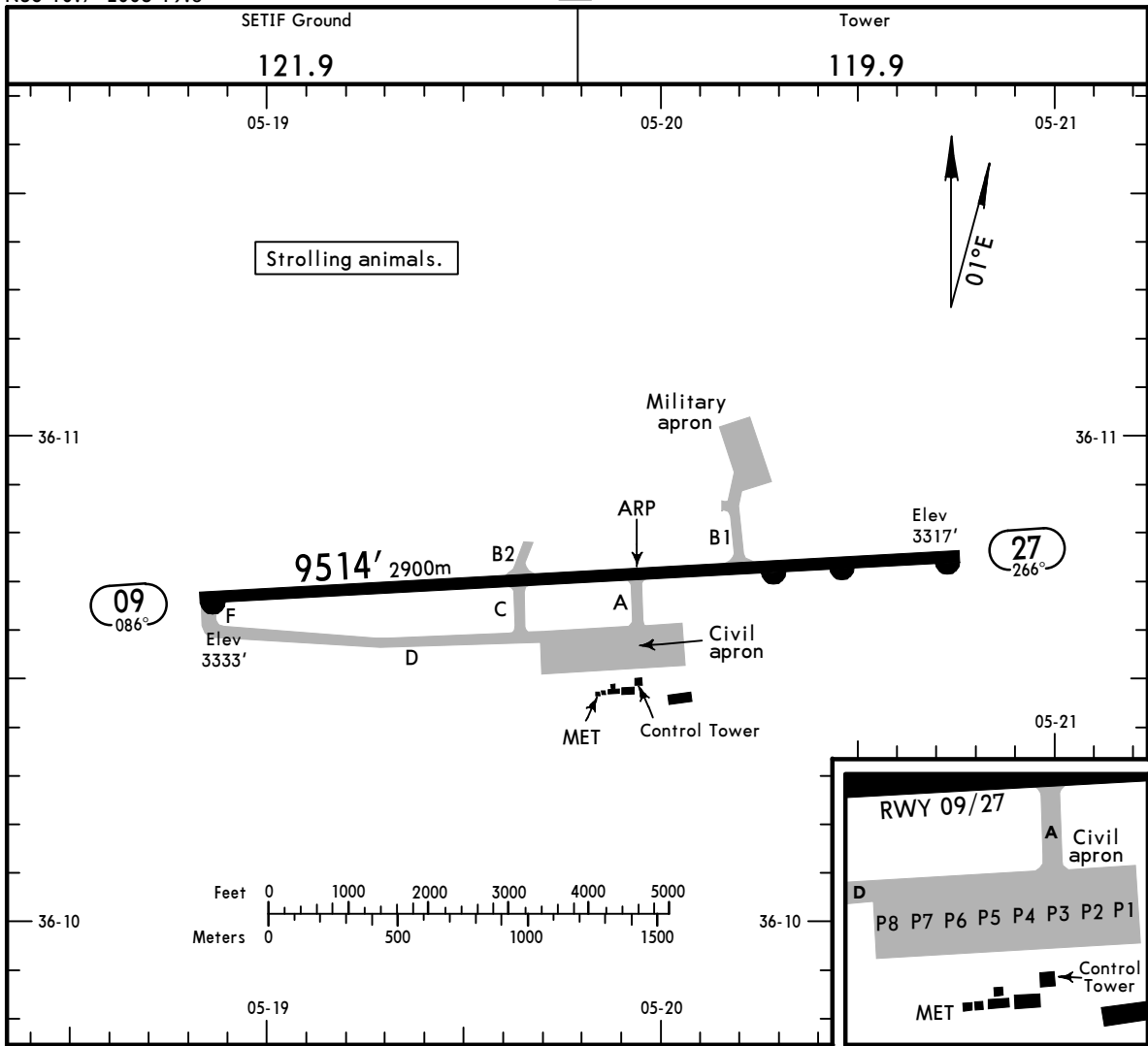


**DAAS/QSF**  
 Apt Elev **3333'**  
 N36 10.7 E005 19.8

**JEPPESSEN**  
 20 SEP 19 **(10-9)**

**SETIF, ALGERIA**  
 8 MAI 45



**ADDITIONAL RUNWAY INFORMATION**

RWY	USABLE LENGTHS	LANDING BEYOND		TAKE-OFF	WIDTH
		Threshold	Glide Slope		
09 27	HIRL (30m) PAPI-L (angle 3.00°)				148' 45m

**TAKE-OFF**

**AIR CARRIER (JAA)**  
**All Rwy's**

RL & CL  
 or RL & RCLM

A	500m
B	
C	
D	

DAAS/QSF



**Standard**  
**SETIF, ALGERIA**  
 8 MAI 45

STRAIGHT-IN RWY		A	B	C	D
<b>09</b>	<b>①</b> VOR DME	<b>3690'</b> (357') <b>2400m</b>	<b>3720'</b> (387') <b>2400m</b>	<b>3760'</b> (427') <b>2800m</b>	NOT APPLICABLE
<b>27</b>	<b>①</b> LOC (with D2.9 ST/D5.5 STF)	<b>3870'</b> (553') <b>2400m</b>	<b>3870'</b> (553') <b>2400m</b>	<b>3870'</b> (553') <b>3200m</b>	<b>3870'</b> (553') <b>3600m</b>
	<b>①</b> LOC (w/o D2.9 ST/D5.5 STF)	<b>4150'</b> (833') <b>2400m</b>	<b>3870'</b> (553') <b>2800m</b>	<b>3870'</b> (553') <b>4800m</b>	<b>3870'</b> (553') <b>5000m</b>
	<b>①</b> VOR (with D5.7)	<b>4090'</b> (773') <b>2400m</b>	<b>4090'</b> (773') <b>2800m</b>	<b>4090'</b> (773') <b>4400m</b>	<b>4090'</b> (773') <b>4800m</b>
	<b>①</b> VOR (w/o D5.7)	<b>4260'</b> (943') <b>2400m</b>	<b>4260'</b> (943') <b>2800m</b>	<b>4260'</b> (943') <b>4800m</b>	<b>4260'</b> (943') <b>5000m</b>

**①** Continuous Descent Final Approach.

<b>②</b> CIRCLE-TO-LAND	100 KT	135 KT	180 KT	205 KT
After VOR DME 09	<b>4020'</b> (687') V3100m	<b>4020'</b> (687') V3100m	<b>4400'</b> (1067') V4900m	NOT APPLICABLE
After LOC 27	<b>4170'</b> (837') V3800m	<b>4170'</b> (837') V3800m	<b>4310'</b> (977') <b>③</b> V4500m	<b>4370'</b> (1037') <b>③</b> V4900m
After VOR 27	<b>4270'</b> (937') V4300m	<b>4270'</b> (937') V4300m	<b>4310'</b> (977') <b>③</b> V4500m	<b>4370'</b> (1037') <b>③</b> V4900m

**②** Not authorized North of airport.

**③** or higher minimums of preceding straight-in approach.

**TAKE-OFF**

RL & CL  
 or RL & RCLM

A  
 B  
 C  
 D

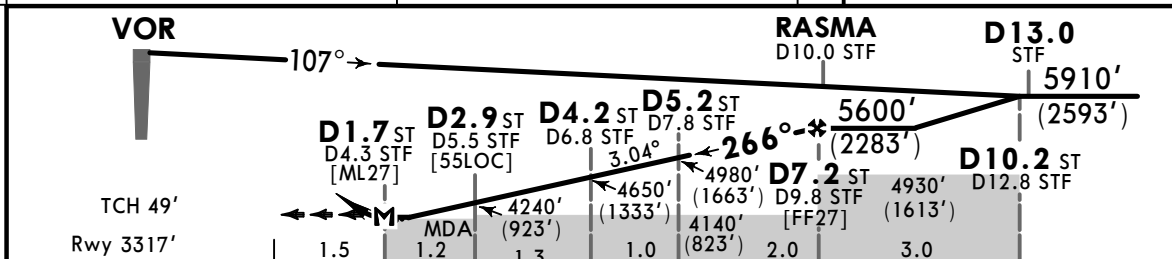
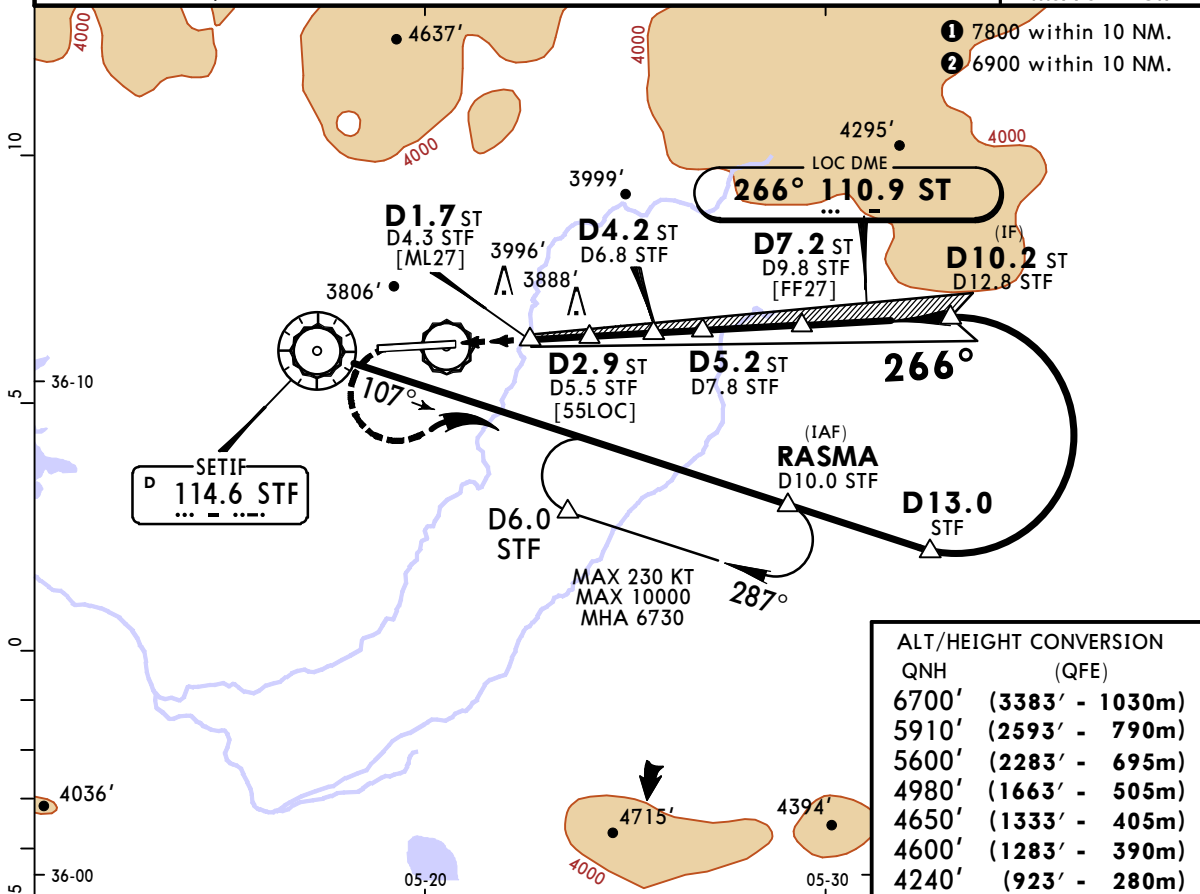
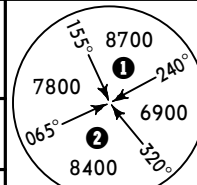
500m

DAAS/QSF  
8 MAI 45

JEPPESSEN  
20 SEP 19 (11-1)

SETIF, ALGERIA  
LOC Rwy 27

SETIF Tower				Ground	
119.9				121.9	
LOC ST <b>110.9</b>	Final Apch Crs <b>266°</b>	Procedure Alt <b>D7.2 ST</b> 5600' (2283')	MDA(H) (CONDITIONAL) 3870' (553')	Apt Elev 3333' Rwy 3317'	
<b>MISSED APCH: Climb STRAIGHT AHEAD. At 4600' (1283') turn LEFT to intercept R-107 STF climbing to MSA, then as directed.</b>					
Alt Set: hPa QNH on req (QFE) Trans level: By ATC Trans alt: 6700' (3383')					
VOR and DME required.					



Gnd speed-Kts	70	90	100	120	140	160	PAPI-L	4600' (1283')	MSA	STF
Descent Angle	3.04°	376	484	538	645	861				
MAP at D1.7 ST/D4.3 STF										

STRAIGHT-IN LANDING RWY 27				CIRCLE-TO-LAND	
with D2.9 ST/D5.5 STF		w/o D2.9 ST/D5.5 STF		Not authorized North of airport	
MDA(H) 3870' (553')		MDA(H) 4150' (833')		MDA(H)	
A	2400m	2400m	100	4170' (837')	3800m
B	3200m	2800m	135	4310' (977')	4500m <b>1</b>
C	3600m	4800m	180	4370' (1037')	4900m <b>1</b>
D	3600m	5000m	205		

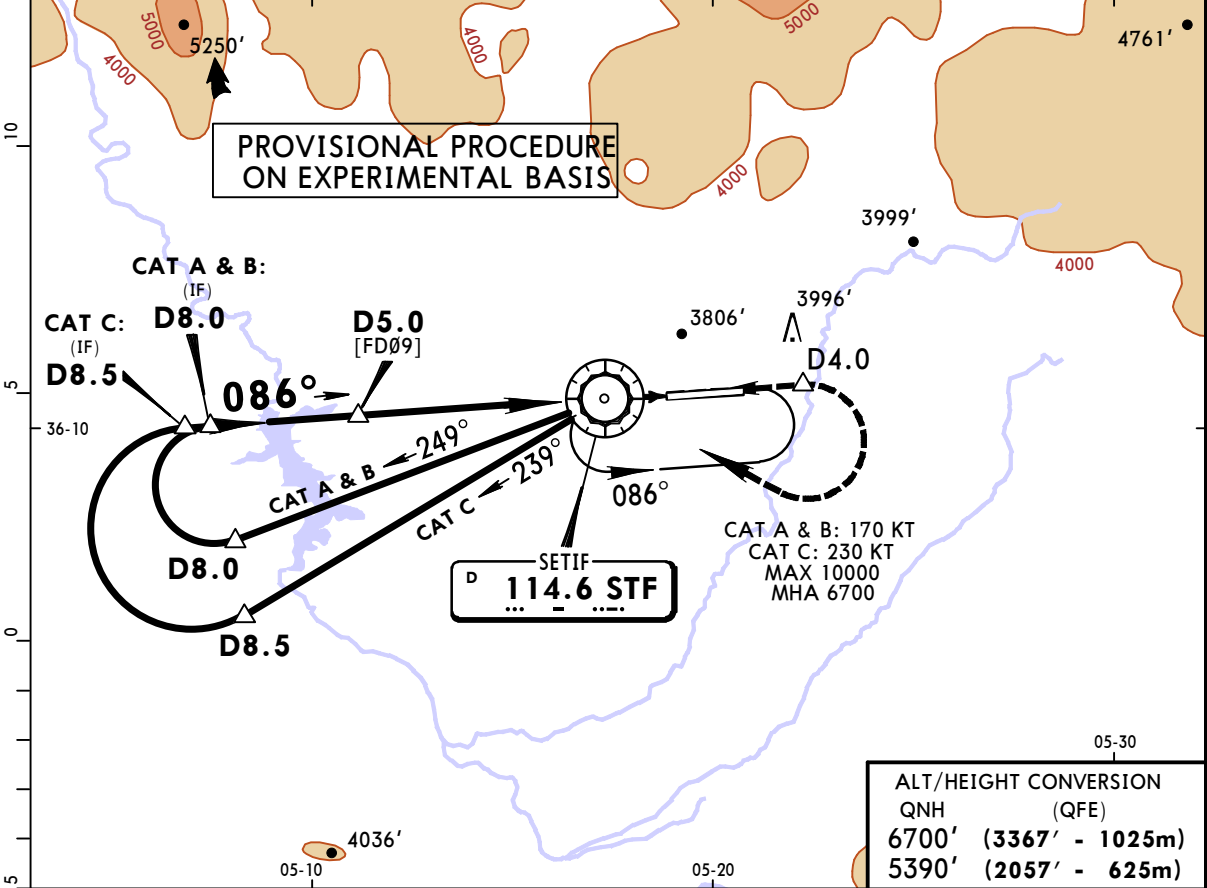
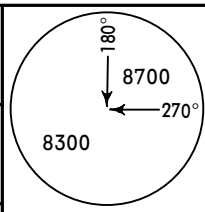
**1** or higher straight-in minimums.  
CHANGES: LOC DME added. Fix names. © JEPPESSEN, 2018, 2019. ALL RIGHTS RESERVED.

**DAAS/QSF**  
8 MAI 45

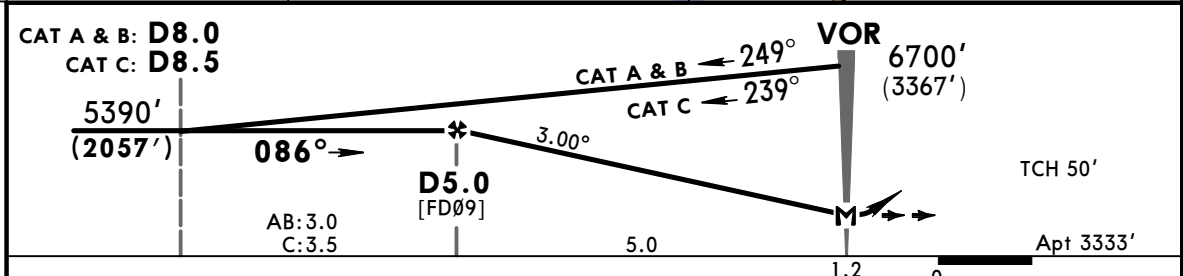
**JEPPESEN**  
5 OCT 18  
Eff 11 Oct **(13-1)** CAT A, B & C

**SETIF, ALGERIA**  
**VOR DME Rwy 09**

SETIF Tower				Ground		
119.9				121.9		
VOR STF	Final Apch Crs	Minimum Alt	MDA(H)	Apt Elev 3333'		
<b>114.6</b>	<b>086°</b>	<b>D5.0</b> <b>5390' (2057')</b>	Refer to Minimums			
<b>MISSED APCH: Climb on R-086 to D4.0, then turn RIGHT to rejoin VOR climbing to 6700'.</b>						
Alt Set: hPa				QNH on req (QFE)	Trans level: By ATC	Trans alt: 6700' (3367')
					MSA STF VOR	



ALT/HEIGHT CONVERSION	
QNH	(QFE)
6700' (3367' - 1025m)	
5390' (2057' - 625m)	



Gnd speed-Kts	70	90	100	120	140	160	PAPI-L	D4.0   STF on   114.6 ↑   R-086
Descent Angle 3.00°	372	478	531	637	743	849		
MAP at VOR								

STRAIGHT-IN LANDING RWY 09				CIRCLE-TO-LAND			
MDA(H) A: 3690' (357') B: 3720' (387') C: 3760' (427')				Not authorized North of airport			
A	2400m			Max Kts	MDA(H)		
B				100	4020' (687')	3100m	
C	2800m			135	4020' (687')	3100m	
D	NOT APPLICABLE			180	4400' (1067')	4900m	
D	NOT APPLICABLE			D	NOT APPLICABLE		

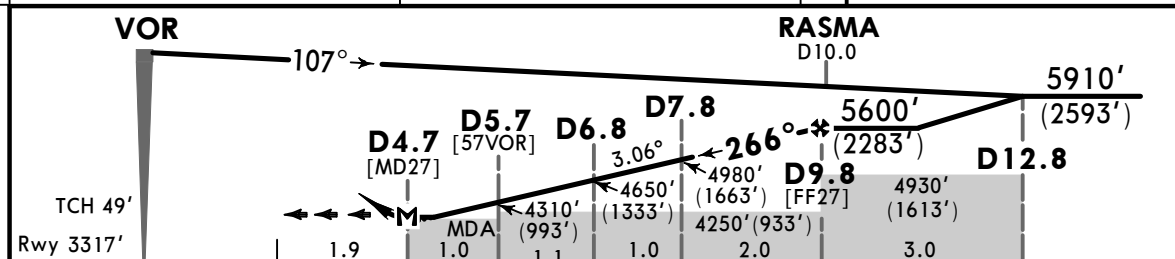
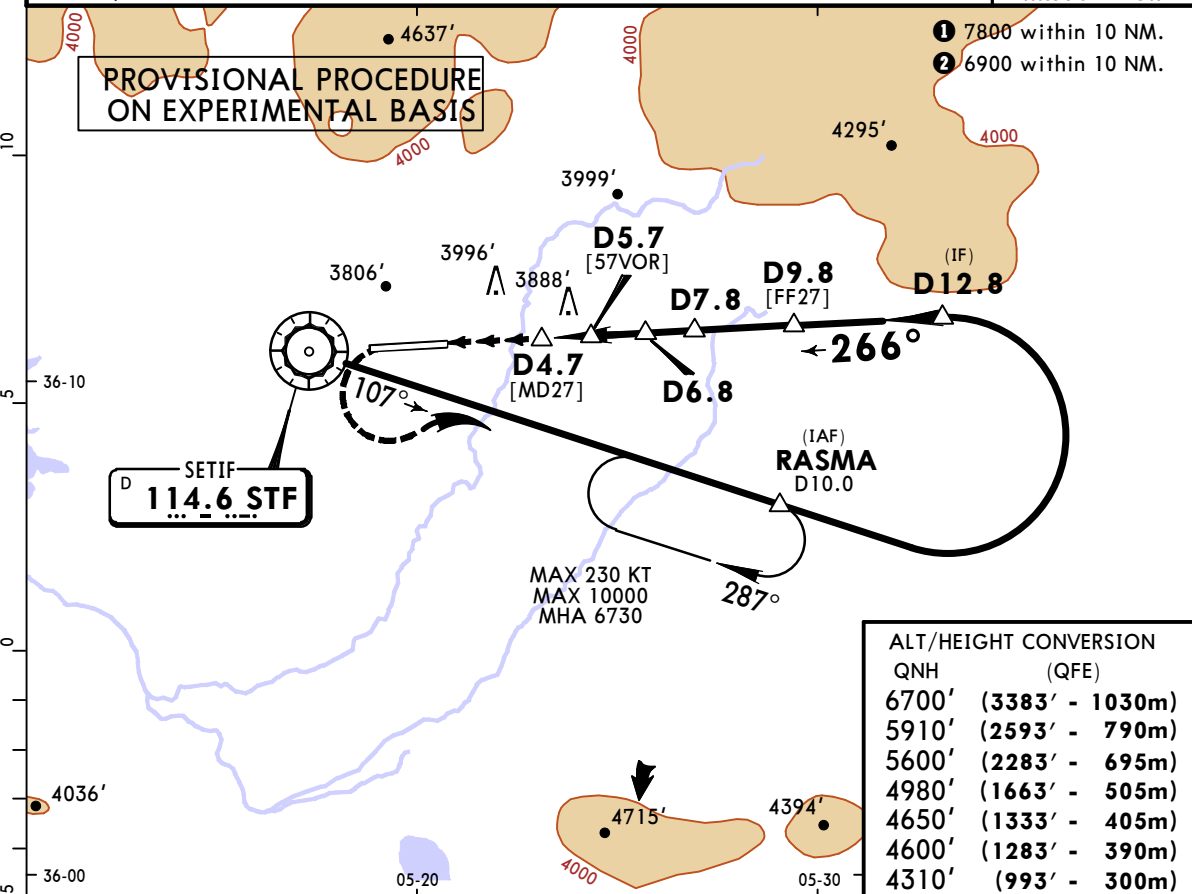
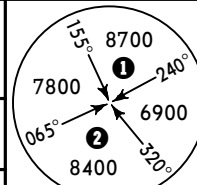
PANS OPS

DAAS/QSF  
8 MAI 45

**JEPPesen**  
5 OCT 18 **(13-2)** Eff 11 Oct

SETIF, ALGERIA  
VOR Rwy 27

SETIF Tower				Ground	
119.9				121.9	
VOR STF	Final Apch Crs	Procedure Alt	MDA(H) (CONDITIONAL)	Apt Elev 3333'	
<b>114.6</b>	<b>266°</b>	<b>5600' (2283')</b>	<b>4090' (773')</b>	Rwy 3317'	
<b>MISSED APCH: Climb STRAIGHT AHEAD. At 4600' (1283') turn LEFT to intercept R-107 climbing to MSA, then as directed.</b>					
Alt Set: hPa		QNH on req (QFE)	Trans level: By ATC	Trans alt: 6700' (3383')	
DME required.					



Gnd speed-Kts	70	90	100	120	140	160	PAPI-L	4600' (1283')	MSA	STF 114.6
Descent Angle	3.06°	379	487	541	650	866				
MAP at D4.7										

	STRAIGHT-IN LANDING RWY 27		CIRCLE-TO-LAND	
	with D5.7	w/o D5.7	Not authorized North of airport	
	MDA(H) 4090' (773')	MDA(H) 4260' (943')	Max Kts	MDA(H)
A	2400m	2400m	100	4270' (937') 4300m
B	2800m	2800m	135	
C	4400m	4800m	180	4310' (977') 4500m <b>1</b>
D	4800m	5000m	205	4370' (1037') 4900m <b>1</b>