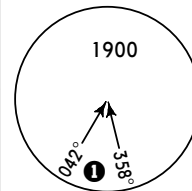


Apt Elev
325

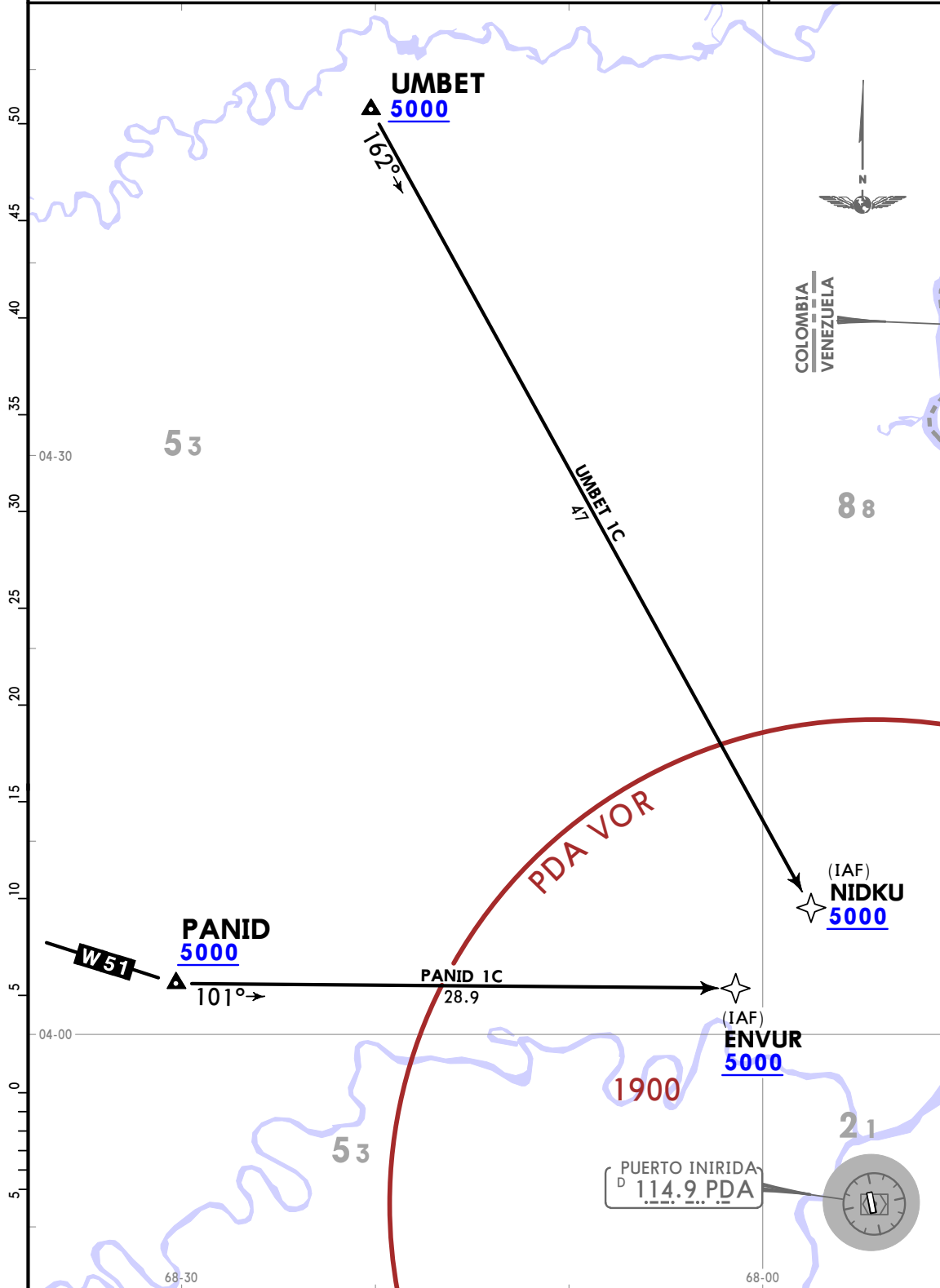
Alt Set: IN (hPa on req) Trans level: FL190
1. RNP 1 or RNAV 1 certification required.
2. GNSS required.

PANID 1C [PANI1C], UMBET 1C [UMBE1C]
RNAV (GNSS) ARRIVALS
(RWY 18)

CAT A, B & C

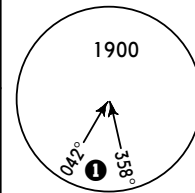


MSA PDA VOR
1 3500 between
15 NM and 25 NM



Apt Elev
325

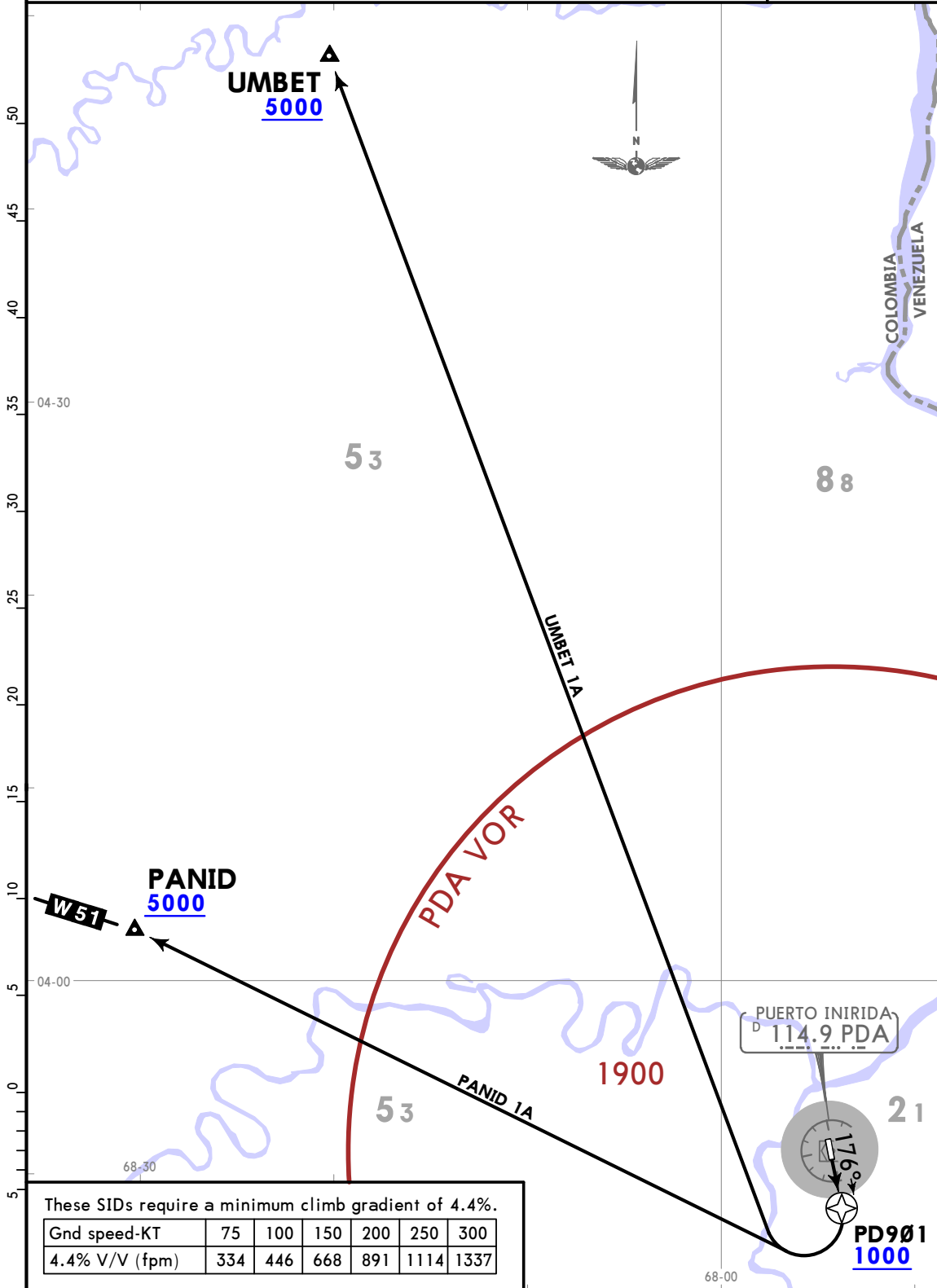
Trans level: 18000
1. RNP 1 or RNAV 1 certification required.
2. GNSS required.



MSA PDA VOR
① 3500 between
15 NM and 25 NM

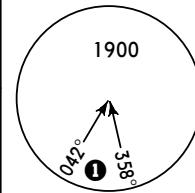
**PANID 1A [PANI1A], UMBET 1A [UMBE1A]
RNAV (GNSS) DEPARTURES
(RWY 18)**

CAT A, B & C



Apt Elev
325

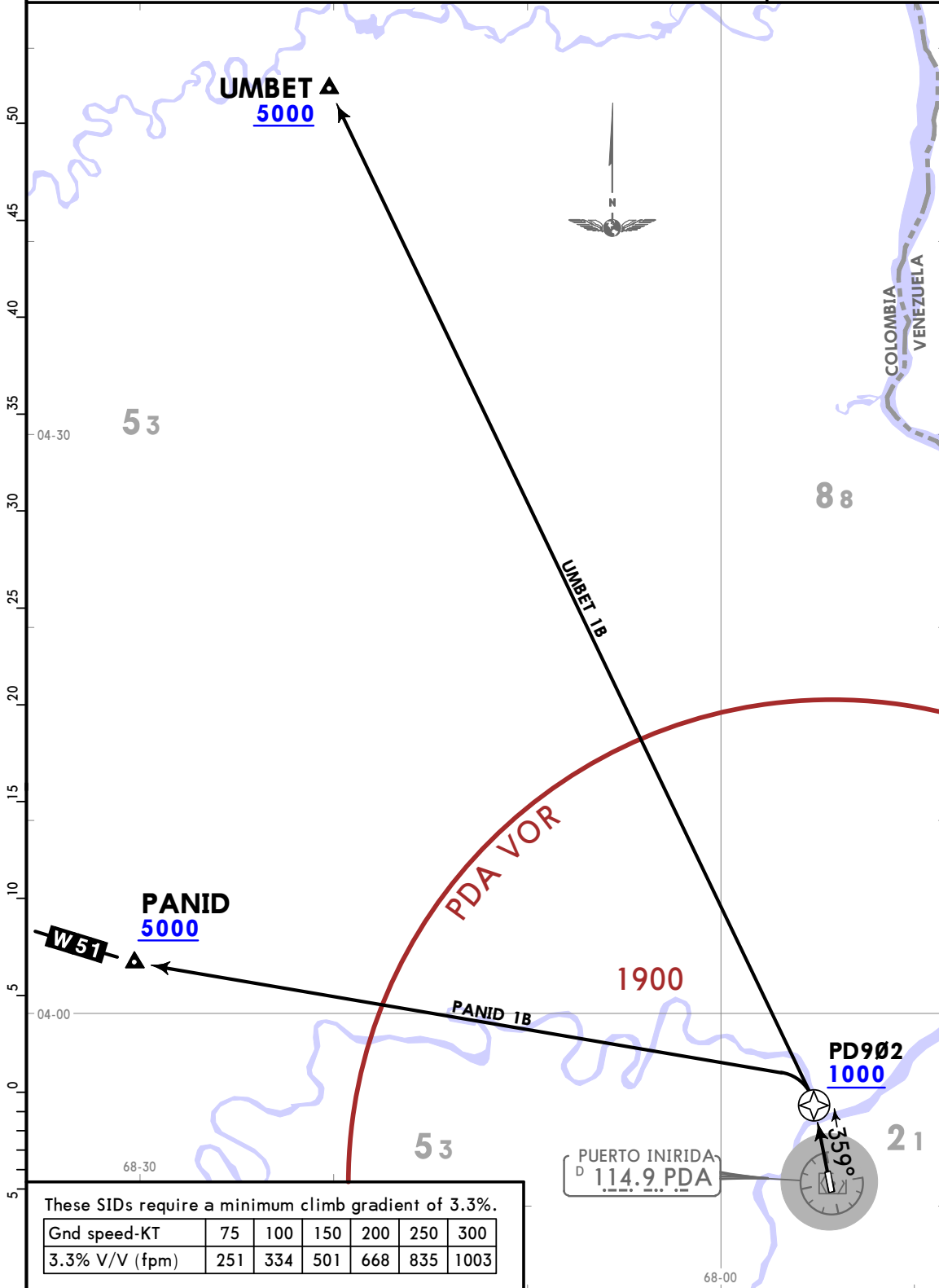
Trans level: 18000
1. RNP 1 or RNAV 1 certification required.
2. GNSS required.



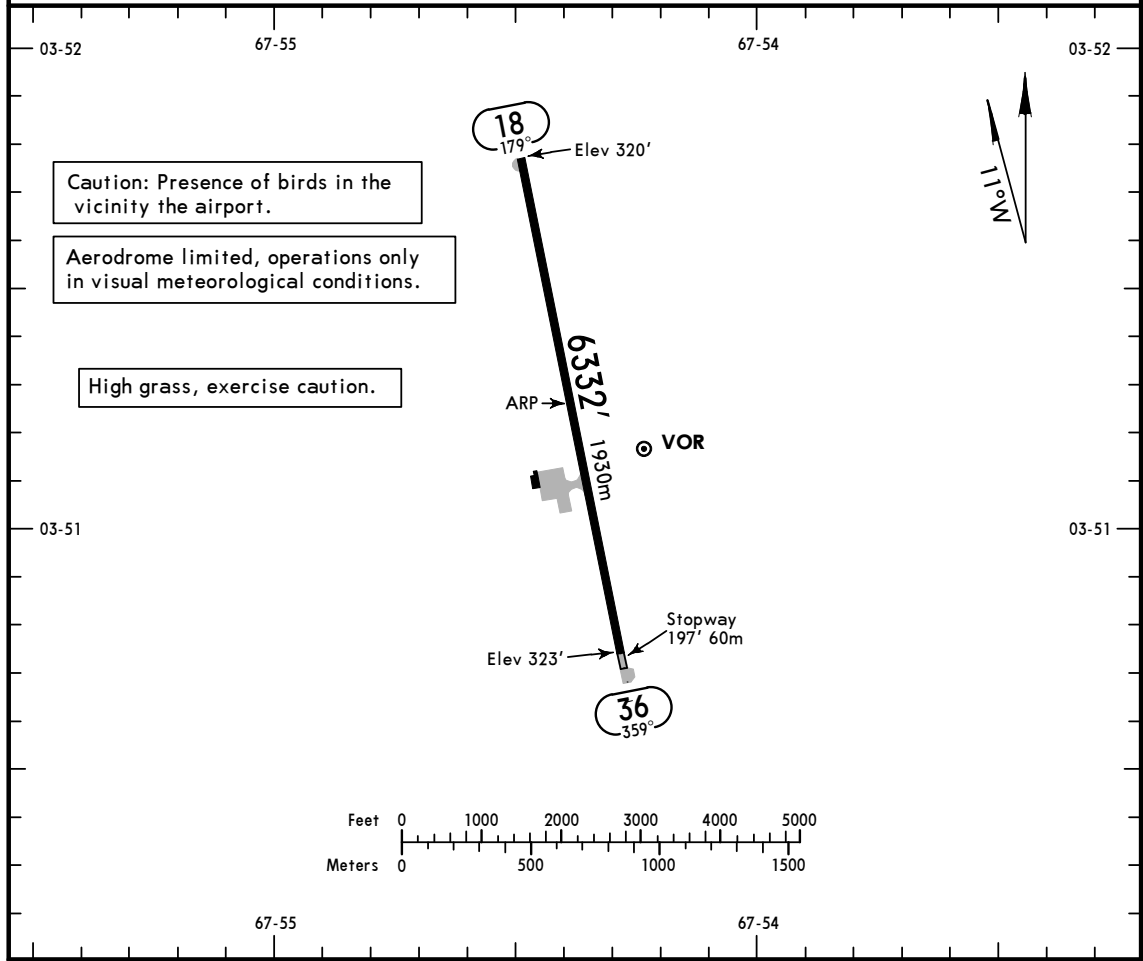
MSA PDA VOR
① 3500 between
15 NM and 25 NM

**PANID 1B [PANI1B], UMBET 1B [UMBE1B]
RNAV (GNSS) DEPARTURES
(RWY 36)**

CAT A, B & C



*CESAR GAVIRIA TRUJILLO Tower 118.7



ADDITIONAL RUNWAY INFORMATION

RWY	USABLE LENGTHS	LANDING BEYOND		TAKE-OFF	WIDTH
		Threshold	Glide Slope		
18 36					98' 30m

TAKE-OFF

All Rwys

Standard

DAY

NIGHT

1 & 2
Eng

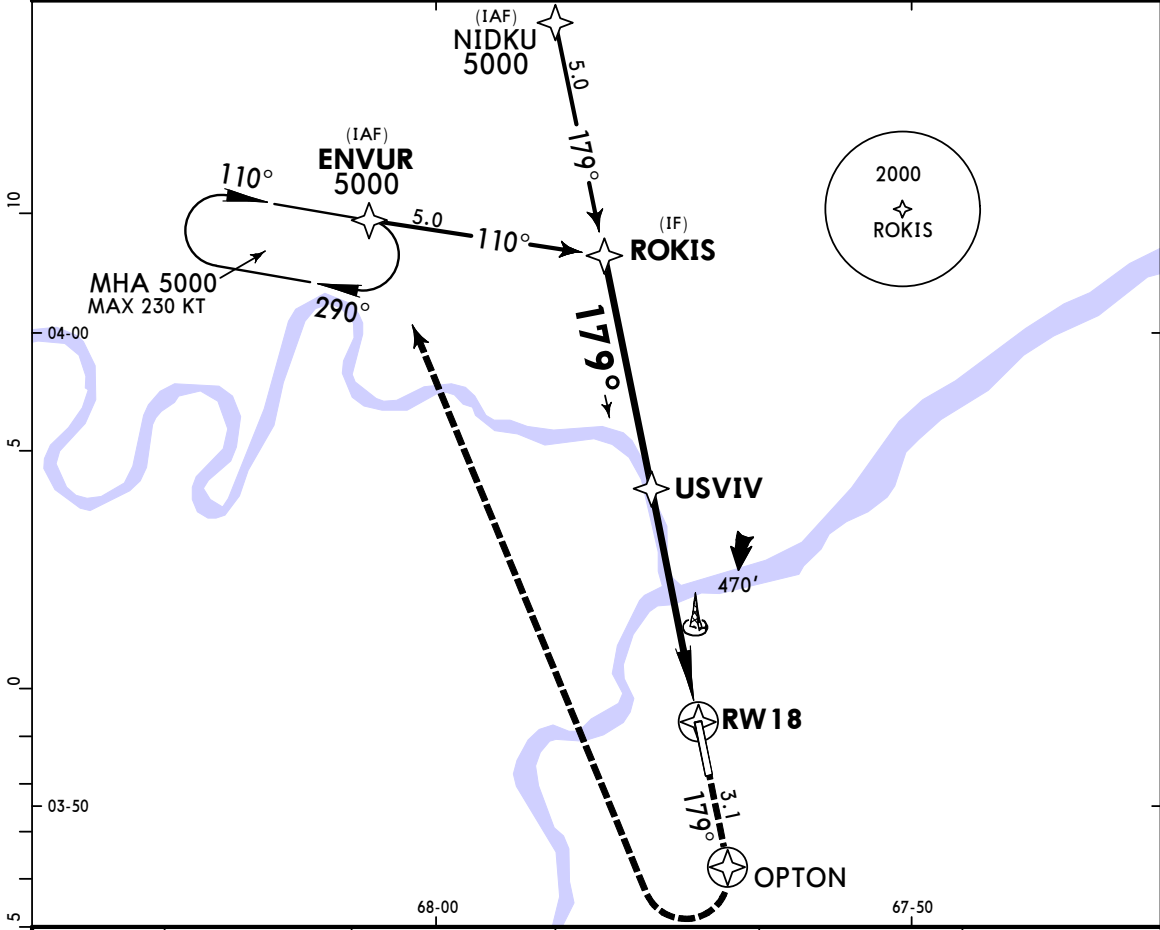
1600m

3 & 4
Eng

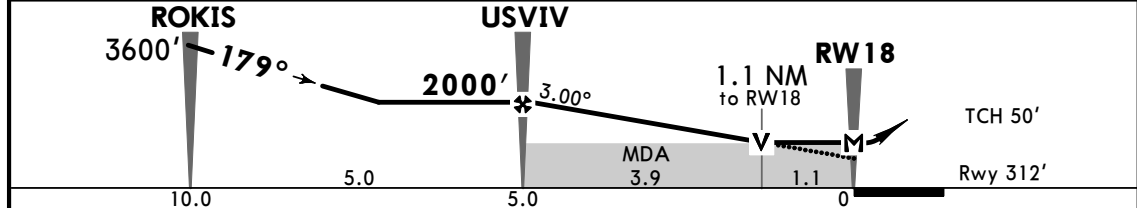
800m

NA

VILLAVICENCIO Information 127.0			CESAR GAVIRIA Tower 118.7		
RNAV	Final Apch Crs 179°	USVIV 2000' (1688')	LNAV MDA(H) 720' (408')	Apt Elev 315'	TAA 25 NM ROKIS
Rwy 312'					
MISSED APCH: Climb on rwy heading to OPTON and 1200', then turn RIGHT (MAX 185 KT until end of the turn) climbing to ENVUR holding pattern at 5000'. Missed apch climb gradient mim 4.0%.					
Alt Set: IN (hPa on req)		Trans Level: FL 190		Trans alt: 18000'	
Certification RNP APCH required.					



DIST to RW18	5.0	4.0	3.0	2.0	1.1
ALTITUDE	2000'	1684'	1368'	1052'	720'



Gnd speed-Kts	70	90	100	120	140	160	1200' on Rwy OPTON hdg	
Descent Angle	3.00°	372	478	531	637	743		849
MAP at RW18 or FAF to MAP	5.0	4:17	3:20	3:00	2:30	2:09		1:53

STRAIGHT-IN LANDING RWY 18 Missed Apch Climb Gradient Mim 4.0% LNAV MDA(H) 720' (408')			CIRCLE-TO-LAND Missed Apch Climb Gradient Mim 4.0%		
A	2100m	Max Kts	100	1000' (685') - 3200m	
B		135		1200' (885') - 4000m	
C	2300m	180		NOT APPLICABLE	
D	NOT APPLICABLE	D		NOT APPLICABLE	

VILLAVICENCIO Information

*CESAR GAVIRIA Tower

127.0

118.7

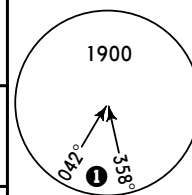
VOR PDA
114.9

Final Apch Crs
175°

D5.0
1740' (1420')

MDA(H)
720' (400')

Apt Elev 325'
Rwy 320'



MISSED APCH: Climb and maintain heading 175° until crossing PDA VOR, then turn LEFT and continue climbing to 3000' and hold at PDA VOR.

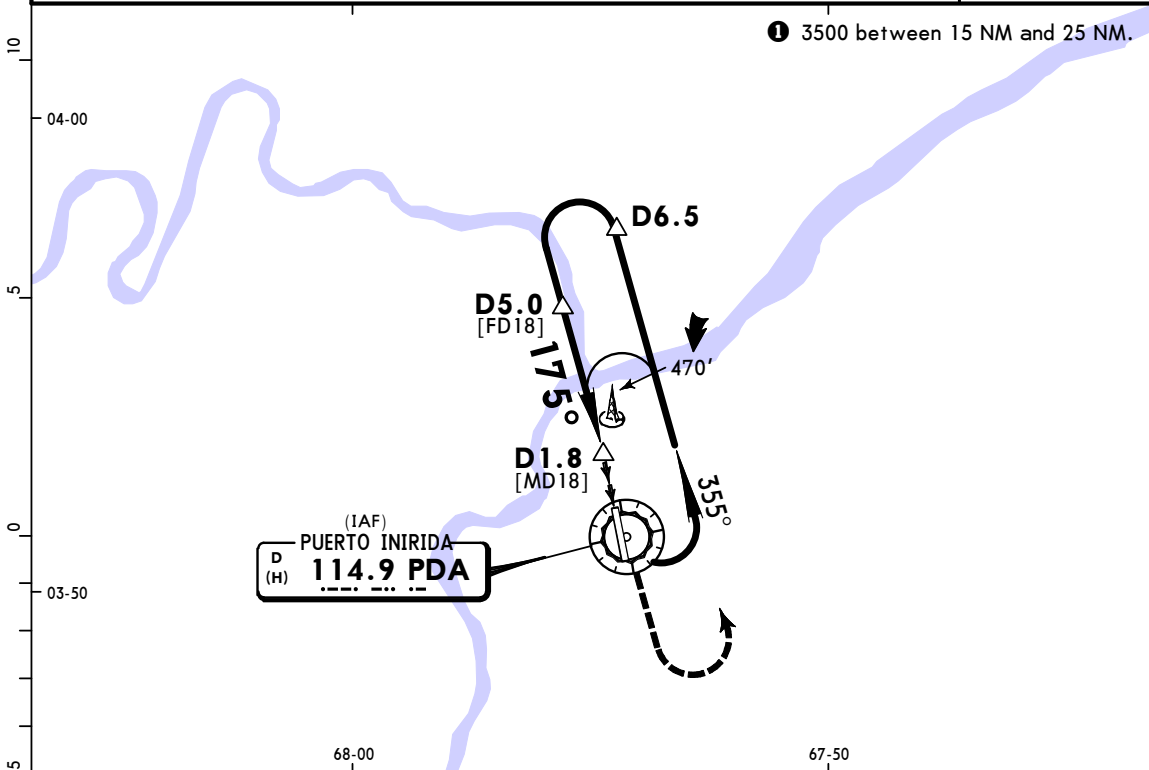
Alt Set: IN (hPa on req)
PDA VOR/DME required.

Trans Level: FL 190

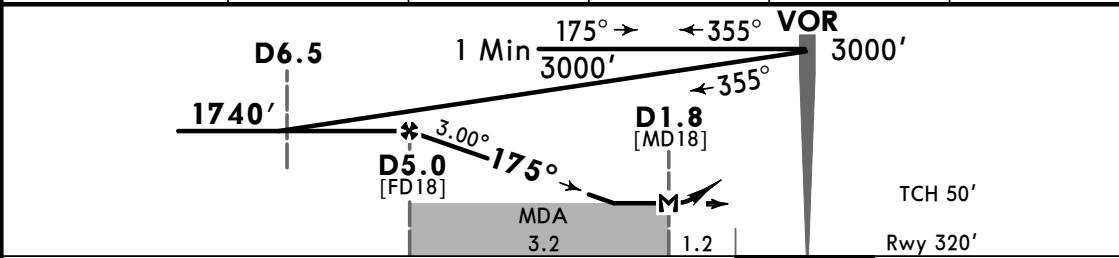
Trans alt: 18000'

MSA PDA VOR

① 3500 between 15 NM and 25 NM.



PDA DME	5.0	4.0	3.0	2.0	1.8
ALTITUDE	1720'	1405'	1090'	775'	720'



Gnd speed-Kts	70	90	100	120	140	160	3000'	175° hdg	PDA 114.9
Descent Angle 3.00°	372	478	531	637	743	849			
MAP at D1.8 or FAF to MAP	3.2	2:45	2:08	1:55	1:36	1:22			

STRAIGHT-IN LANDING RWY 18

CIRCLE-TO-LAND

MDA(H) **720'** (400')

A	B	C	D	Max Kts	MDA(H)
	2100m	2300m	NA	100	870' (545') -3200m
				135	960' (635') -3200m
				180	1060' (735') -4000m
				D	NA