

LCRA AD 2.1 LOCATION INDICATOR AND NAME	
LCRA - AKROTIRI	

LCRA AD 2.2 - AERODROME GEOGRAPHICAL AND ADMINISTRATIVE DATA		
1	ARP Co-ordinates and site at AD:	N34 35 25-20 E032 59 16-20 Mid-point of Runway 10/28
2	Direction and distance from City:	6nm S of Limassol
3	Elevation/Reference Temperature:	76ft / -°C
4	Magnetic Variation / Annual Change:	3-90°E (JUL 06) / 1-72E increasing
5	Geoid Undulation at AD Elev Position	----
6	AD Administration: Address: Telephone: Fax: E-mail: Web site:	Royal Air Force Royal Air Force Akrotiri BFPO 57 Mil: 9231 98435 6664 (Ops) Civ: ++357 2527 6664 (Ops) Mil: 9231 98435 6795 (Ops) Civ: ++357 2527 6795 (Ops)
7	Types of Traffic Permitted (IFR/VFR):	IFR/VFR
8	Remarks:	Nil.

LCRA AD 2.3 - OPERATIONAL HOURS		
1	AD:	0400 - 1600 (Summer), 0500 - 1700 (Winter). Closed during periods of inactivity.
2	Customs and Immigration:	HO
3	Health and Sanitation:	HO
4	AIS Briefing Office:	HO
5	ATS Reporting Office (ARO):	H24
6	MET Briefing Office:	H24
7	ATS:	HO
8	Fuelling:	HO
9	Handling:	HO
10	Security:	H24
11	De-icing:	Nil
12	Remarks:	PNR for Military aircraft. MOD chartered civil aircraft only. Min 24hr PPR strictly adhered to.

28 SEP 06

LCRA AD 2.4 - HANDLING SERVICES AND FACILITIES		
1	Cargo Handling Facilities:	Forklifts, Trepal & Atlas Cargo loaders, Baggage loaders.
2	Fuel/Oil /HydraulicTypes:	F34. O-7, 20, 26, 27, 38. OM-12, 15.
3	Fuelling Facilities/Capacity:	Bowsers; pressure and open line.
4	Oxygen:	HPOX, LOX.
5	De-Icing Facilities:	Nil.
6	Starting Units:	LP1, AST (Mk 12).
7	Hangar space for visiting aircraft:	Limited.
8	Repair facilities for visiting aircraft:	Nil.
9	Remarks:	Nil.

LCRA AD 2.5 - PASSENGER FACILITIES		
1	Accommodation:	Limited on base accommodation available for Service/MOD sponsored personnel only.
2	Medical Facilities:	Medical Centre.
3	Remarks:	Nil.

LCRA AD 2.6 - RESCUE AND FIRE FIGHTING SERVICES		
1	AD Category for Fire Fighting:	Crash Category 4A during operational hours. Crash Category 5A available O/R. Min PPR 24 hrs.
2	Rescue Equipment:	As required for Crash Category 5A.
3	Capability for removal of disabled aircraft:	Universal towing arms. Crash mats. 1 x 75 ton crash trolley, 1 x 10 ton crash trolley.

LCRA AD 2.7 - SEASONAL AVAILABILITY - CLEARING		
1	Type of Clearing equipment:	Nil.
2	Remarks:	Braking action assesment by Mu- Meter. Latest available information from ATC.

LCRA AD 2.8 - APRONS, TAXIWAYS AND CHECK LOCATIONS DATA					
1	Apron surfaces:	Apron	Surface	Strength	
		A, B, D, E Dispersals	Concrete	LCG III	
		G Dispersal	Concrete	LCG VI	
		Compass Swing and T to the N of Rwy 10/28	Concrete	LCG V	
		Engine running platform	Concrete	LCG II	
2	Taxiway width, surface and strength:	Taxiway	Width	Surface	Strength
		Parallel Taxiway	17m	Blacktop	LCG II
		Link Taxiways	17m	Blacktop	LCG II
		Fast access track from G Dispersal	13m	Blacktop	LCG IV
		ERP to parallel taxiway eastward	16m	Blacktop	LCG II
		Access tracks to A & B Dispersals	20m	Blacktop	LCG II
		Taxiway through C & F Dispersals	15m	Blacktop	LCGIII
3	Altimeter Check Location and Elevation:	N/A			
4	VOR Checkpoints: INS Checkpoints:	See AD 2 LCRA-1-13/14			
5	Remarks:	Captains of all aircraft are to exercise caution when taxiing or manoeuvring due to natural FOD hazard.			

LCRA AD 2.9 - SURFACE MOVEMENT GUIDANCE AND CONTROL SYSTEM MARKINGS		
1	Use of aircraft stand ID signs: Taxiway guide lines & visual docking/parking guidance system of aircraft stands:	Nil. Yellow taxiway markings and parking slot guidance with ground marshalls.
2	Runway & taxiway markings & lighting:	Runway: Standard runway and taxiway markings with green centreline and blue edge taxiway lighting. 2 stub bars 130ft from each threshold to mark jet aircraft line-up point to avoid barrier damage.
		Taxiway: Southern taxiway adjacent to 3 and 5 hangars, non-standard white broken entrance lines to dispersal.
3	Stop Bars:	13 red Stop Bars with green centre light at each end of the runway.
4	Remarks:	Nil.

13 JUN 02

LCRA AD 2.10 AERODROME OBSTACLES						
In Approach / Take - off areas				In circling area and at aerodrome		
1				2		
Runway/area affected	Obstacle type Elevation Markings/lighting	Co-ordinates		Obstacle type Elevation Markings/lighting	Co-ordinates	
a	b	c		a	b	
		ft amsl			ft amsl	
10 Approach	Trees	115	N34 35 41.30 E032 58 00.50			
28 Take-off	Trees	109	N34 35 40.60 E032 58 03.10			
	Twr (Lit)	193	N34 35 33.70 E032 58 05.10			
	Trees	113	N34 35 40.20 E032 58 05.40			
	Tree	108	N34 25 39.80 E032 58 07.40			
	Tree	95	N34 25 40.90 E032 58 08.90			
	Trees	106	N34 35 38.80 E032 58 08.60			
	Trees	106	N34 35 40.30 E032 58 09.40			
	Tree	96	N34 35 39.20 E032 58 13.90			
	Bushes	90	N34 35 35.50 E032 58 16.40			
	Trees	87	N34 35 43.60 E032 58 23.90			
	Bush	82	N34 35 41.10 E032 58 27.40			
	Bush	90	N34 35 41.40 E032 58 29.30			
	Twr (Lit)	149	N34 35 27.30 E032 58 31.90			
	Windsock	113	N34 35 40.10 E032 58 32.70			
	RVR Twr/ Anamometer	106	N34 35 39.60 E032 58 35.30			
	Trees	93	N34 35 41.20 E032 58 38.20			
	Bushes	85	N34 35 38.80 E032 58 41.60			
	Hangar & Rail	158	N34 35 18.60 E032 59 09.40			
	ATC Aerial	145	N34 35 14.00 E032 59 25.00			
	Twr (Lit)	188	N34 35 29.40 E032 58 17.40			
	Tree	87	N34 35 42.10 E032 58 30.60			
	Road Sign	81	N34 35 40.50 E032 58 30.80			
	Sign	83	N34 35 41.00 E032 58 31.40			
	Tree	90	N34 35 40.30 E032 58 37.40			
	Trees	108	N34 35 41.70 E032 58 00.50			
	Trees	108	N34 35 46.50 E032 58 00.70			
28 Approach	Hangar & Aerial	220	N34 35 18.00 E032 58 52.60			
10 Take-off	Bushes	86	N34 35 23.20 E032 59 42.60			
	RHAG Housing	84	N34 35 12.60 E032 59 49.40			
	Wind Sock	115	N34 35 19.70 E032 59 53.80			
	PAR Reflector	84	N34 35 13.10 E032 59 55.60			
	RVR Twr/ Anamometer	114	N34 35 11.40 E032 59 56.00			
	GP Aerial	117	N34 35 18.50 E032 59 57.60			
	Tree	86	N34 35 06.30 E033 00 07.90			
	TACAN	237	N34 34 45.80 E032 57 46.30			
	Mast	348	N34 34 36.80 E032 58 19.20			
	Mast	345	N34 34 33.10 E032 58 21.20			
	Tx Mast	289	N34 34 35.80 E032 58 21.80			
	Mast	347	N34 34 34.40 E032 58 22.00			
	Water Tower	251	N34 34 31.80 E032 58 29.80			
	Radar	232	N34 34 20.10 E032 59 18.90			
	Mast	382	N34 37 01.50 E032 59 57.60			
	Mast	381	N34 36 57.60 E032 59 57.60			
	Mast	336	N34 37 15.10 E033 00 05.60			
	Mast	383	N34 37 01.50 E033 00 06.80			
	Mast	382	N34 36 57.70 E033 00 06.80			
	Radar Head	249	N34 34 17.20 E032 59 50.10			
	Mast & Aerial	144	N34 35 12.60 E032 59 29.30			
	CBR	249	N34 34 17.20 E032 59 59.10			
	Mast	234	N34 34 20.20 E033 00 35.40			
	Mast	241	N34 34 19.30 E033 00 25.20			
	Mast	261	N34 34 13.90 E033 00 27.20			
3	Remarks:	Nil.				

LCRA AD 2.11 - METEOROLOGICAL INFORMATION		
1	Associated MET Office:	Akrotiri
2	Hours of service: MET Office outside hours:	H24 -----
3	Office responsible for TAF information: Periods of validity:	Akrotiri 24 hours
4	Type of landing forecast: Interval of issuance:	TAFs 3 Hourly
5	Briefing/consultation provided:	Personal
6	Flight documentation: Language(s) used:	Charts / TAFs / METARs Abbreviated plain language text
7	Charts and other information available for briefing or consultation:	Actual / Forecast surface analyses and upper wind charts, tephigrams, satellite imagery, thunderstorm location
8	Supplementary equipment available for providing information:	PC display - ODS / MSGF / NAMIS
9	ATS units provided with information:	Cyprus Sovereign Base Areas
10	Additional information (limitation of services etc):	Troodos, UN Cyprus
11	Remarks:	Nil.

LCRA AD 2.12 - RUNWAY PHYSICAL CHARACTERISTICS						
Designations Runway number	True and MAG bearing	Dimensions of Runway (m)	Strength (PCN) and surface of Runway and stopway	Threshold co-ordinates	Threshold elevation highest elevation of TDZ of precision APP Rwy	
1	2	3	4	5	6	
10	107.60° GEO 103.70° MAG	2743 x 61	LCG II Asphalt (Grooved)	N34 35 12.00 E033 00 07.20	TDZE 71ft	
28	287.60° GEO 283.70° MAG	2743 x 61	LCG II Asphalt (Grooved)	N34 35 39.00 E032 58 24.60	TDZE 76ft	
Desig & Slope of Rwy/Swy	Stopway Dimensions (m)	Clearway Dimensions (m)	Strip Dimensions (m)	OFZ		
7	8	9	10	11		
10 - 0.06%U	Nil	43 x 150	2863 x 300	-		
28 - 0.06%D	Nil	43 x 150	2863 x 300	-		
12	Arresting Systems					
	Rwy 10	RAF Type B _____ (70ft Ovrn)	RHAG(B) _____ (1,900ft)	RHAG(B) _____ (1,450ft)	RAF Type B _____ (70ft Ovrn)	Rwy 28
	Jet acft are normally to start take-off 130ft from thld (marked by 2 STUB BARS) to avoid barrier damage. Normal op position, both cables de-rigged.					
13	Remarks	Concrete thresholds at each end of runway.				

17 MAR 05

LCRA AD 2.13 - DECLARED DISTANCES					
Runway	TORA (m)	TODA (m)	ASDA (m)	LDA (m)	Remarks
1	2	3	4	5	6
10	2,743	2,786	2,743	2,743	
26	2,743	2,786	2,743	2,743	

LCRA AD 2.14 - APPROACH AND RUNWAY LIGHTING								
Runway	Approach lighting Type Length Intensity	Threshold lighting Colour Wingbars	PAPI VASIS Angle Distance from Thr (MEHT)	TDZ lighting Length	Runway Centreline lighting Length Spacing Colour Intensity	Runway edge lighting Length Spacing Colour Intensity	Runway End lighting Colour Wingbars	Stopway lighting Length(m) Colour
1	2	3	4	5	6	7	8	9
10	CL1B 1,378ft/420m HI	Green Green Wingbars	PAPI 3° 331m (56ft)	Nil	Nil	Elevated, but flush at Rwy accesses & RHAG positions. White HI Uni, 30m White LI Omni, 90m	Red with one green light in centre	Nil
28	CL5B 2,946ft/898m HI	Green Green Wingbars	PAPI 3° 331m (59ft)	Nil	Nil	Elevated, but flush at Rwy accesses & RHAG positions. White HI Uni, 30m White LI Omni, 90m	Red with one green light in centre	Nil
10	Remarks:		Nil.					

LCRA AD 2.15 - OTHER LIGHTING, SECONDARY POWER SUPPLY	
1	A Bn/I Bn location, characteristics and hours of operation: Adjacent to A Dispersal. AK •- -•- HO. Red.
2	Anemometer location and lighting: Eastern end of Airfield between main runway and parallel taxiway. Unlit.
3	Taxiway edge and centreline lighting: Standard on all taxiways.
4	Secondary power supply: Switch-over time: Yes. No break.
5	Remarks: Nil.

LCRA AD 2.16 - HELICOPTER LANDING AREA	
1	Location: See Aerodrome Chart.
2	Elevation:
3	Lighting:
4	Remarks:

LCRA AD 2.17 - ATS AIRSPACE			
Designation and lateral limits		Vertical limits	Airspace Classification
1		2	3
RAF Akrotiri Restricted Flying Area (ARFA). N343845-00 E0330048-00 (Origin) - Arc of a circle radius 3.4nm centred on N343525-20 E0325916-20, clockwise to N343827-00 E0325718-00 thence contiguous with the WSBA boundary to the original. Note: No civil acft will be allowed to fly in the ARFA without authorisation from RAF Akrotiri. Any incursions by unauthorised acft are to be reported to Air Ops immediately.		3,000ft MSL SL	G
4	ATS Unit Callsign: Language:	Akrotiri English	
5	Transition Altitude:	8,000ft	
6	Remarks:	Nil.	

LCRA AD 2.18 - ATS COMMUNICATION FACILITIES					
Service Designation	Callsign	Frequency MHz	Hours of Operation		Remarks
			Winter	Summer	
1	2	3	4		5
APP	Akrotiri Approach	235-05 122-1 362-3*	HO	HO	*NATO common frequency. Available on request only.
DIR	Akrotiri Director	264-85 122-1 344-0* 123-3*	HO	HO	*NATO common frequency. Available on request only.
PAR	Akrotiri Talkdown	240-55 123-3* 385-4* 122-1	HO	HO	*NATO common frequency. Available on request only.
TWR	Akrotiri Tower	339-85 122-1 257-8*	HO	HO	*NATO common frequency. Available on request only.
GND	Akrotiri Ground	396-85	HO	HO	
OPS	Akrotiri Operations	234-05	HO	HO	
ATIS	Akrotiri ATIS	288-2	HO	HO	Answerphone ext 6076.

19 JAN 06

LCRA AD 2.19 - RADIO NAVIGATION AND LANDING AIDS							
Type Category (Variation)	Ident	Frequency	Hours of Operation Winter Summer # and by arrangement		Antenna Site co-ordinates	Elevation of DME Transmitting antenna	Remarks
1	2	3	4		5	6	7
TACAN	AKR	116.0	HO	HO	N343445-60 E0325746-20		CH 107
SSR			HO	HO			
PAR	Akrotiri Talkdown	240.55 123.3* 385.4* 122.1*	HO	HO			*NATO common frequency. Available on request.
SRE	Akrotiri Approach	235.05 264.85 362.3* 344.0* 122.1* 123.3*	HO	HO			*NATO common frequency. Available on request.
UDF		243.0 235.05 264.85 279.05 362.3*	HO	HO			*NATO common frequency. Available on request.
ILS	AK	109.7	HO	HO			Rwy 28 only, QFU 284°. RDH 53ft.

LCRA AD 2.20 - LOCAL TRAFFIC REGULATIONS	
1	Airport regulations: IAW standard military procedures.
2	Ground Movement: As directed by ATC.
3	CAT II/III Operations: Flying club and helicopter movements outside normal opening hours.
4	Warnings: Nil.
5	Helicopter Operations: As directed by ATC.
6	Use of Runways: See LCRA AD 2.12.12 Arresting Systems.
7	Training: None specified.

LCRA AD 2.21 - NOISE ABATEMENT PROCEDURES
See TAP Charts

LCRA AD 2.22 - FLIGHT PROCEDURES		
1	Procedures for in bound aircraft.	See TAP Charts
2	Departures.	See TAP Charts
3	Radio Communication Failure.	See TAP Charts
4	Missed Approach Procedure.	See TAP Charts
5	Aerodrome Operating Minima.	See TAP Charts

LCRA AD 2.23 - ADDITIONAL INFORMATION	
1.	MSA for aircraft approaching or overflying Cyprus is 8700ft.
2.	Helicopter and light aircraft activity at any time.
3.	Radio masts 315ft agl 2.2nm NW and 385ft agl 2.2nm NE of aerodrome.
4.	Visual circuits to South of A/D, circuit altitude 1200ft QFE. Low-level circuit 600ft QFE. Avoid overflying domestic area. Avoid overflying hospital 3.2nm SW of aerodrome.
5.	The fast access track at Rwy 28 threshold end has an LCG IV.
6.	In the event of serious interference on TWR/APP frequencies; Pilots should relay messages via NICOSIA RADAR on 125-5, 126-3.
7.	Crews are to check HIRTA details in Vol 3, Section 2-3 (Cyprus) of the International Planning Document prior to flight. Aircraft that fall into the severe bracket for HIRTA susceptibility are to contact Air Operations prior to arrival.
8.	During airfield opening hours Havequick II TOD is available on request, on Akrotiri Ops frequency 358.6Mhz. Outside airfield opening hours a beacon broadcast of a Havequick II TOD (every 10-15 seconds) will be available on 358.6Mhz.
9.	Hang gliding site at CURIUM CLIFFS. PERM. Circle radius 1nm centred on 34 40 10.20N 032 53.00E. Gnd - 1000ft.
10.	Parascending site at AKROTIRI SALT LAKE, up to 1500ft. Times co-ordinated with ATC or Cyprus Ops (Episkopi) ext 3061 when ATC closed.

LCRA AD 2.24 - CHARTS RELATING TO THIS AERODROME		
Terminal Approach Procedure Charts	En-Route Charts	
Noise Abatement	AD 2 - LCRA - 1 - 10	EU(L) 11
Aerodrome	AD 2 - LCRA - 1 - 11	
Ramp East	AD 2 - LCRA - 1 - 13	EU(H) 11
Ramp West	AD 2 - LCRA - 1 - 14	EU(H) 18
Rwy 10 SID	AD 2 - LCRA - 1 - 15	
Rwy 28 SID	AD 2 - LCRA - 1 - 16	ME(H/L) 1
STAR	AD 2 - LCRA - 1 - 17	
Radar Vector Chart	AD 2 - LCRA - 1 - 18	
Radar Procedure	AD 2 - LCRA - 1 - 19	
TAC to ILS Rwy 28	AD 2 - LCRA - 1 - 20	
TAC Rwy 28	AD 2 - LCRA - 1 - 21	

AERODROME

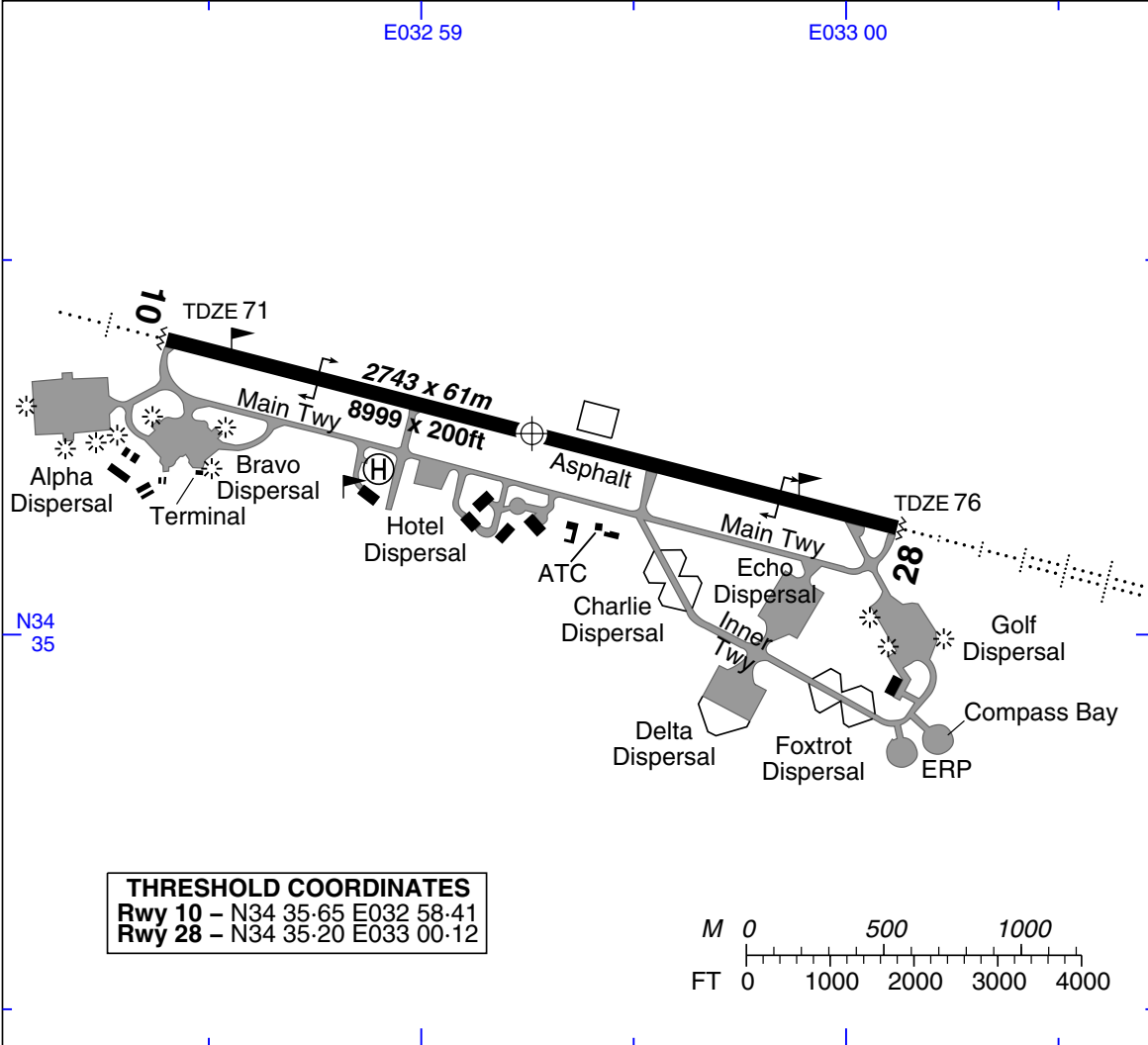
AKROTIRI

LCRA/AKT CYPRUS

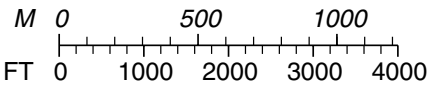
Changes: Freqs, Criteria

No1 AIDU (RAF)/European Aeronautical Group Aerad LCRAD1

Elev 76	Var 4°E	ARP	N34 35.42 E032 59.27 (WGS 84)		D1
AKROTIRI GROUND 396-850 120-4		TOWER 339-850	OPS 234-050	ATIS 288-2	



THRESHOLD COORDINATES	
Rwy 10	- N34 35.65 E032 58.41
Rwy 28	- N34 35.20 E033 00.12



RWY	SLOPE	LDA m/ft	APP LGT		RWY LGT
10(108°T)	0.06%U	2743/8999	P 3° (56)	CL-1B	RTHL(H)+WB:REDL(H,U,O):RENL(H)
28(288°T)	0.06%D	2743/8999	P 3° (59)	CL-5B	RTHL(H):REDL(H,U,O):REDL(H)

- CABLES** Inset:
 - Rwy 10 - 579m/1900ft
 - Rwy 28 - 442m/1450ft.
 Normal Ops. Both cables de-rigged.
 Fast Jet Ops - App cable de-rigged, Overrun cable up.
- CIRCUITS** .
 - Direction. Rwy 10 RHC : Rwy 28 LHC.
 - Height.
 - Normal - 1200 QFE.
 - Low-Level - 600 QFE S of AD.
- Overflight of hospital (3nm SW) **prohibited** below 2000ft QFE.
- After TKOF maintain rwy Tr until over the sea.
- Braking action moderate to poor in wet conditions.
- Inner twy is unsuitable for wide bodied acft.
- Additional freqs: Talkdown 240-550, GATA1 240-100, GATA2 355-000, APS Ops 369-450, SAR 252-8

AKROTIRI
APATC-1

AERODROME

13 JUN 02

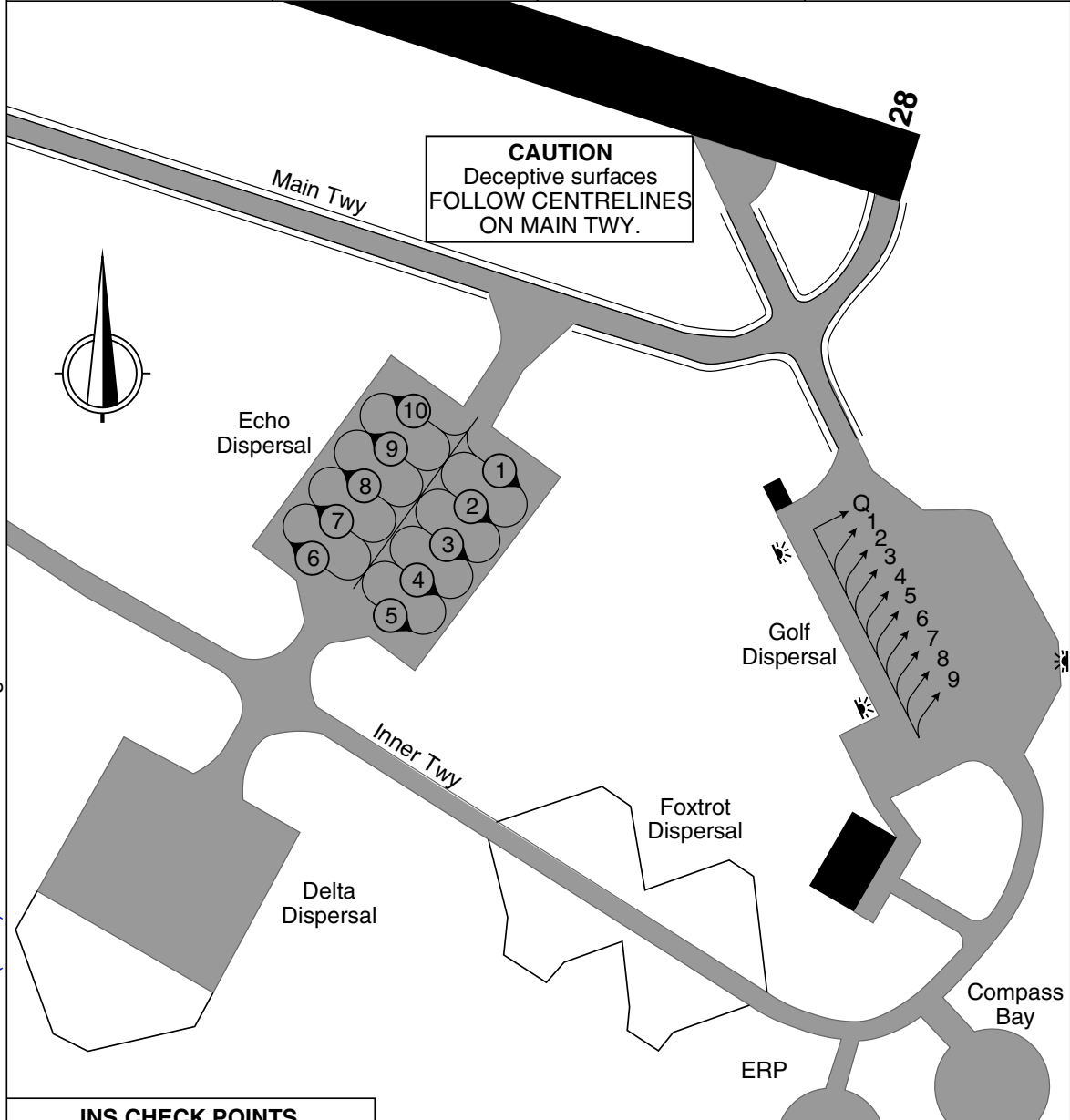
INTENTIONALLY BLANK

RAMP EAST

AKROTIRI

LCRA/AKT CYPRUS

Elev 76	Var 4°E	ARP	N34 35.42 E032 59.27 (WGS 84)	F1
AKROTIRI GROUND 396-850 120-4		TOWER 339-850	OPS 234-050	ATIS 288-2



Changes: Editorial

No1 Aeronautical Information Documents Unit (RAF) LCRAF1

INS CHECK POINTS ECHO DISPERSAL	
BAY NO	CO-ORDS
1	N34 35-07 E032 59-91
2	N34 35-06 E032 59-90
3	N34 35-04 E032 59-88
4	N34 35-02 E032 59-87
5	N34 35-00 E032 59-85
6	N34 35-03 E032 59-81
7	N34 35-05 E032 59-82
8	N34 35-06 E032 59-84
9	N34 35-08 E032 59-85
10	N34 35-10 E032 59-87

GOLF DISPERSAL	
BAY NO	CO-ORDS
1	N34 35-06 E033 00-09
2	N34 35-05 E033 00-09
3	N34 35-04 E033 00-10
4	N34 35-03 E033 00-11
5	N34 35-02 E033 00-12
6	N34 35-00 E033 00-12
7	N34 34-99 E033 00-13
8	N34 34-98 E033 00-14
9	N34 34-97 E033 00-15
Q Shed	N34 35-07 E033 00-07

AKROTIRI
APATC-1

RAMP EAST

23 NOV 06

RAMP WEST

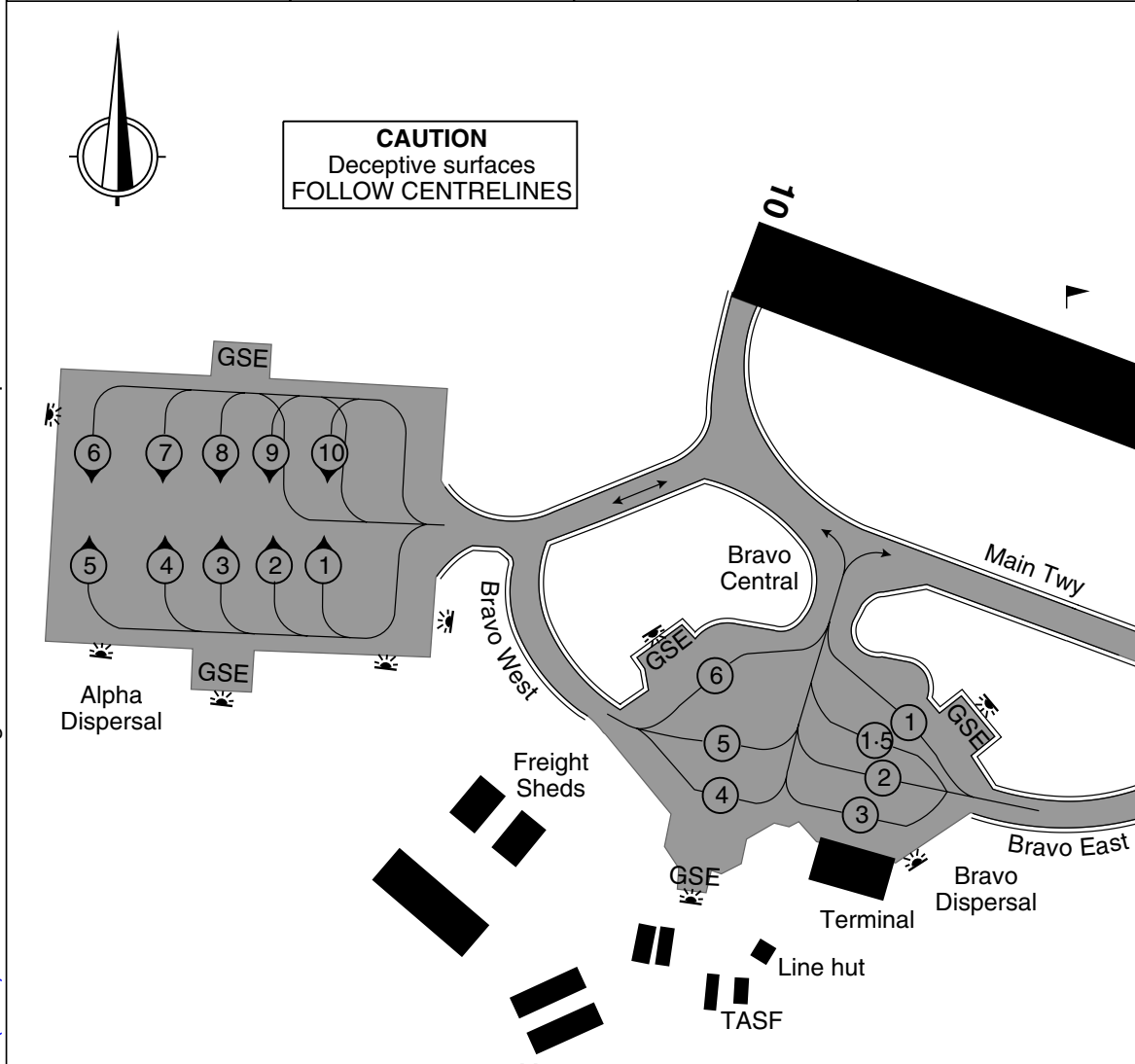
AKROTIRI

LCRA/AKT CYPRUS

Changes: INS Co-ords – BRAVO Dispersal

No1 Aeronautical Information Documents Unit (RAF) LCRAF2

Elev 76	Var 4°E	ARP	N34 35.42 E032 59.27 (WGS 84)		F2
AKROTIRI GROUND 396-850 120.4		TOWER 339-850	OPS 234-050	ATIS 288.2	



INS CHECK POINTS ECHO DISPERSAL	
BAY NO	CO-ORDS
1	N34 35.50 E032 58.50
1.5	N34 35.50 E032 58.50
2	N34 35.40 E032 58.50
3	N34 35.40 E032 58.50
4	N34 35.40 E032 58.40
5	N34 35.40 E032 58.40
6	N34 35.50 E032 58.40

INS CHECK POINTS ALPHA DISPERSAL	
BAY NO	CO-ORDS
1	N34 35.50 E032 58.23
2	N34 35.50 E032 58.20
3	N34 35.50 E032 58.17
4	N34 35.50 E032 58.14
5	N34 35.50 E032 58.11
6	N34 35.55 E032 58.12
7	N34 35.55 E032 58.14
8	N34 35.54 E032 58.17
9	N34 35.54 E032 58.20
10	N34 35.54 E032 58.23

1. **Bravo Dispersal.** Acft will normally enter and exit the dispersal according to the parking slot allocated.

AKROTIRI
APATC-1

RAMP WEST

Rwy 10 SID

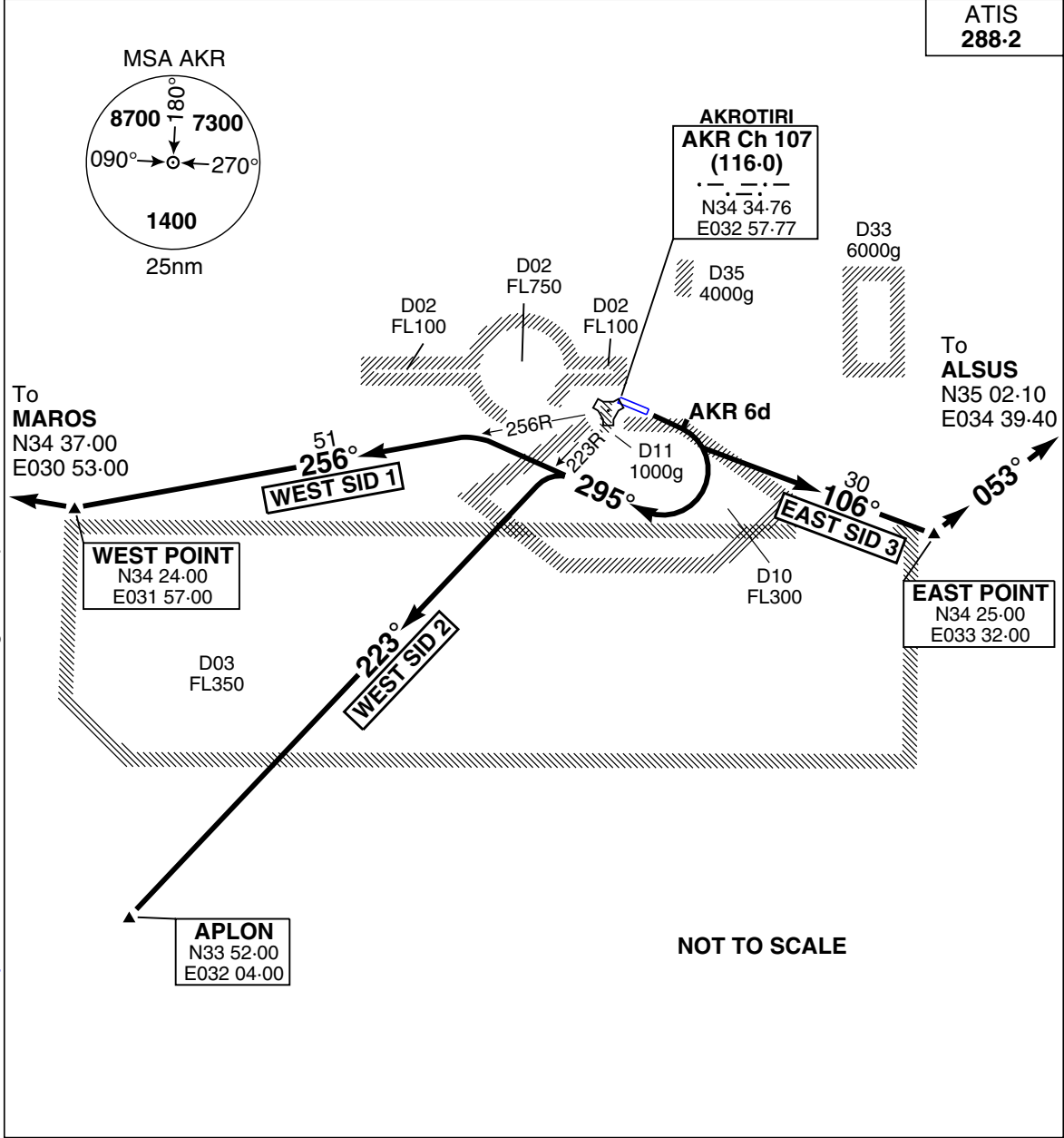
AKROTIRI

LCRA/AKT CYPRUS

Elev 76	Var 4°E	TA 8000	TRL ATC		G1
AKROTIRI GROUND 396-850 120.4		TOWER 339-850	APPROACH 235-050	NICOSIA CONTROL 126.3 353.8 (East) 125.5 353.8 (West)	

Changes: Freqs

No1 AIDU (RAF)/European Aeronautical Group Aerad LCRAG1



1. When possible and range activity permits, APPROACH will co-ordinate a direct track to APLON; pilots will be advised before take-off.

SID	RWY	ROUTEING (Including Mnm Noise Routes)
WEST SID 1	10 104°M	Climb on Rwy Tr to 4nm/AKR 6d, then right on Tr 295° to intcp AKR 256R to WEST POINT.
WEST SID 2		Climb on Rwy Tr to 4nm/AKR 6d, then right on Tr 295° to intcp AKR 223R to APLON.
EAST SID 3		Follow AKR 106R to EAST POINT then left on Tr 053° to ALSUS.

AKROTIRI
APATC-1

Rwy 10 SID

06 JUL 06

Rwy 28 SID

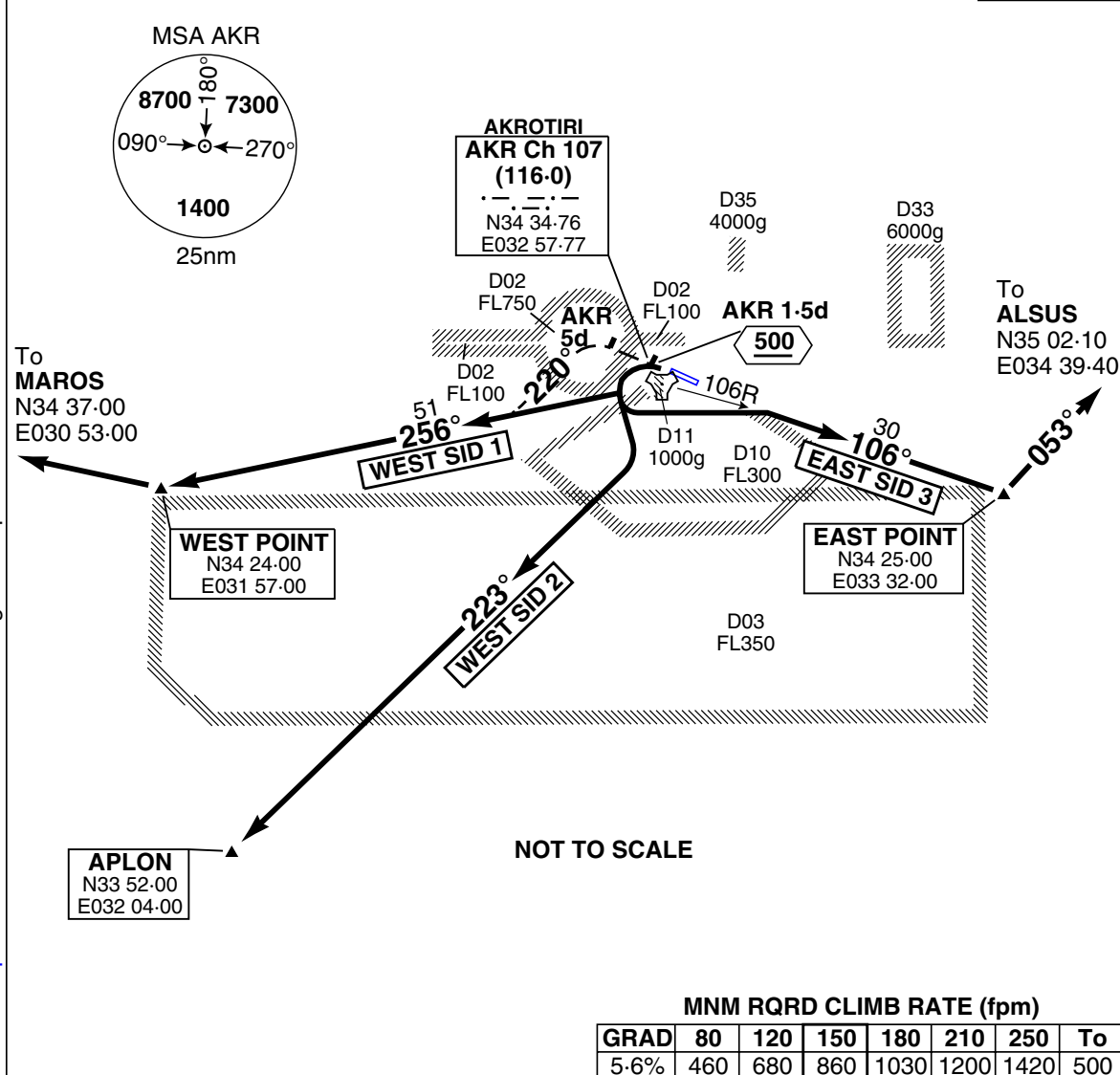
AKROTIRI

LCRA/AKT/CYPRUS

Elev 76	Var 4°E	TA 8000	TRL ATC		G2
AKROTIRI GROUND 396.850 120.4		TOWER 339.850	APPROACH 235.050	NICOSIA CONTROL 126.3 353.8 (East) 125.5 353.8 (West)	
					ATIS 288.2

Changes: Freqs

No 1 AIDU (RAF)/European Aeronautical Group Aerad LCRAG2



1. When possible and range activity permits, APPROACH will co-ordinate a direct track to APLON; pilots will be advised before take-off.
2. A climb rate of 5-6% to 500agl is required for ATC purposes
3. In an emergency, AKROTIRI ATC will suppress LC D02 activity.

SID	RWY	ROUTEING (Including Mnm Noise Routes)
WEST SID 1	28 284°M	D02 Active. Climb on Rwy Tr to cross 1.5nm/AKR 1-5d not below 500, then left on AKR 256R to WEST POINT climbing as cleared. D02 Inactive. Climb on Rwy Tr to 5nm/AKR 5d, then left onto 220° to intcp and follow AKR 256R to West Point.
WEST SID 2		Climb on Rwy Tr to cross 1.5nm/AKR 1-5d not below 500, then left on AKR 223R to APLON climbing as cleared.
EAST SID 3		Climb on Rwy Tr to cross 1.5nm/AKR 1-5d not below 500, then left on AKR 106R to EAST POINT climbing as cleared; at EAST POINT left on Tr 053° to ALSUS.

AKROTIRI
APATC-1

Rwy 28 SID

STAR

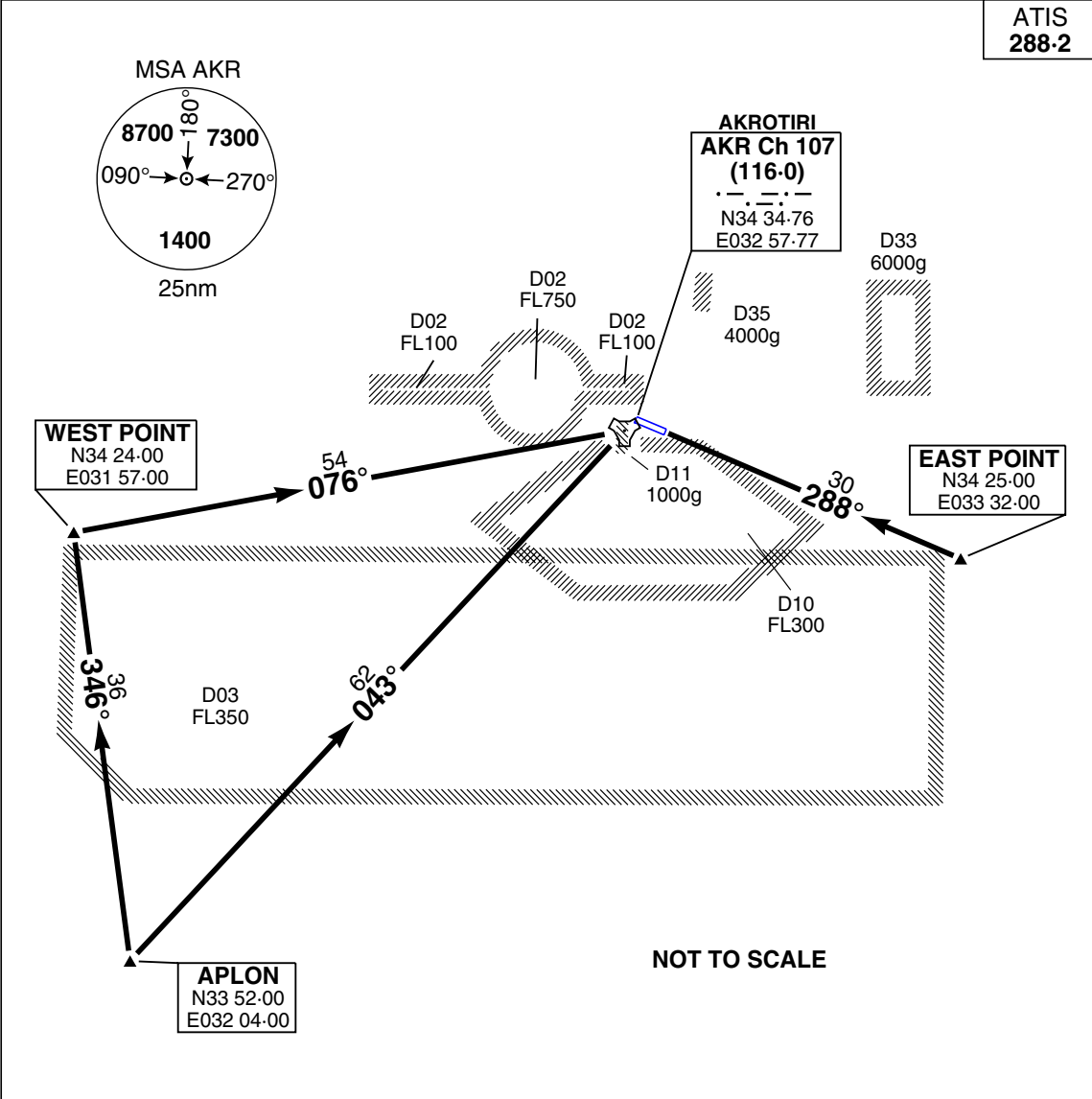
AKROTIRI

LCRA/AKT CYPRUS

Elev 76	Var 4°E	TA 8000	TRL ATC		H1
NICOSIA CONTROL 126-3 353-8 (East) 125-5 353-8 (West)			AKROTIRI APPROACH 235-050	TOWER 339-850	GROUND 396-850 120-4

Changes: Freqs

No1 AIDU (RAF)/European Aeronautical Group Aerad LCRAH1



1. Subject to serviceability of SRE all arrivals are radar monitored.
2. Subject to RT capability and NICOSIA ATCC, initial contact with AKROTIRI APPROACH is before 50nm range.
3. UK military acft are not to overfly Cyprus or approach within 5nm of the coast unless in the AKROTIRI traffic patterns or if specifically authorised (LCP 24).
4. Whenever possible and when range activity permits, AKROTIRI APPROACH will co-ordinate a direct track approach to AKROTIRI.

STAR	ROUTEING (Including Mnm Noise Routes)
From ALSUS	When released by NICOSIA ATCC, call AKROTIRI APPROACH to route via EAST POINT.
From APLON 4	When released by NICOSIA ATCC, call AKROTIRI APPROACH to route direct to AKROTIRI.
From MAROS	When released by NICOSIA ATCC, call AKROTIRI APPROACH to route via WEST POINT.

AKROTIRI
APATC-1

STAR

RADAR VECTERING CHART

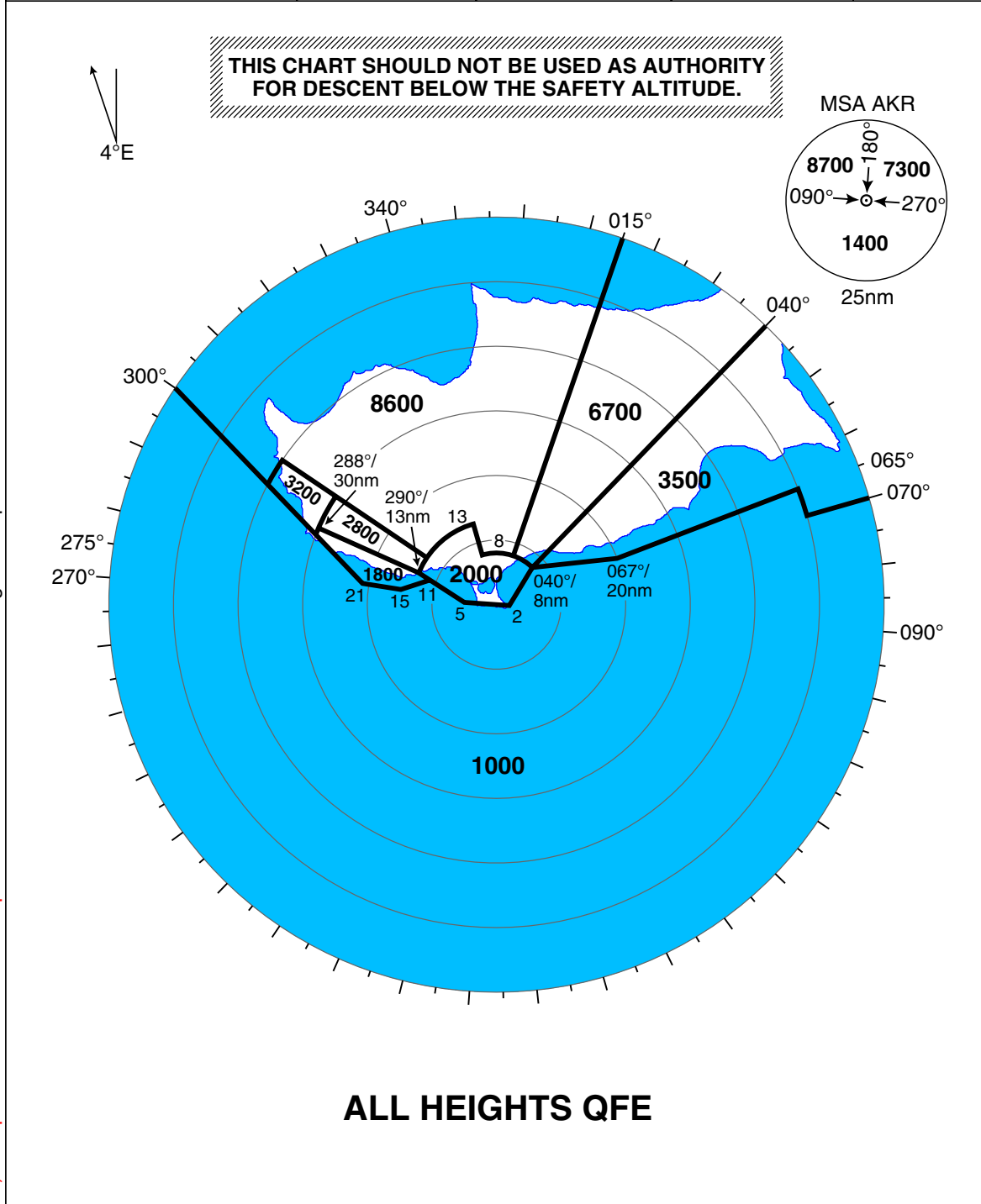
AKROTIRI

LCRA/AKT CYPRUS

Changes: Freqs

No1 AIDU (RAF)/European Aeronautical Group Aerad LCRAK1

Elev 76	Var 4°E	TA 8000	TRL ATC	ESA 8700		K1
AKROTIRI APPROACH 235-050		RADAR 264-850 122-1		TOWER 339-850	GROUND 396-850 120-4	ATIS 288-2



ALL HEIGHTS QFE

<p>GENERAL INFORMATION</p> <ol style="list-style-type: none"> All bearings are magnetic. All distances are NM from the radar head. All levels are based on QFE. QFE Datum is 71ft 	
--	--

AKROTIRI
APATC-1

RADAR VECTERING CHART

RADAR PROCEDURES

AKROTIRI

LCRA/AKT CYPRUS	Elev 76	Var 4° E	TA 8000	TRL	ATC				K2
	AKROTIRI APPROACH 235-050		RADAR 264-850 122-1		TALKDOWN 240-550		TOWER 339-850		
	RWY QFU	PROC	GP/TCH	RTR	MAPt	CAT	DA/RVR MDA/RVR	DH/ MDH	CEILING/ VIS
	10	PAR	2.5°/49	-	-	A BCDE	300/1.6	230	300/1.6
	104°								NOT AUTHORISED
		PAR	3°/58	-	-	ABCDE	290/1.6	220	300/1.6
		AZ	-	-	1nm	ABC DE	410/1.6 410/2.0	340	400/1.6 400/2.0
		SRE	-	-	1nm	AB C D E	560/1.6 560/2.0 560/2.4 560/2.8	490	500/1.6 500/2.0 500/2.4 500/2.8
<p>WARNING. Floodlight towers 193 AMSL (247°/1738ft from Rwy 10 THR) contained within M/App segment. M/App surface originates at DH point. No allowance made for level surface before M/App climb.</p> <p>MISSED APPROACH. Climb on rwy Tr to 2070 2000, then right on Tr 220°, climb as directed.</p>									
Changes: Freqs	28	PAR	2.5°/49	-	-	ABCDE	310/14	230	300/1.4
	284°								
		PAR	3°/58	-	-	ABCDE	280/14	200	300/1.4
		AZ	-	-	1nm	ABCDE	340/14	260	300/1.4
		SRE	-	-	1nm	ABCD E	510/14 510/1.6	430	500/1.4 500/1.6
<p>MISSED APPROACH. Climb on rwy Tr to 2080 2000, then left on Tr 220°, climb as directed.</p> <p>MISSED APPROACH WHEN D02 IS ACTIVE. Immediately climb to 2080 2000, when passing 1580 1500 turn immediately left onto Tr 130°, or as directed.</p>									
No 1 AIDU (RAF)/European Aeronautical Group Aerad LCRAK2	CIRCLING MINIMA					AB	660	580	600/1.6
						C	660	580	600/2.4
						DE	660	580	600/3.2
<p>CIRC prohibited N of Rwy 10/28.</p>									
<p>COMMS FAILURE. If unable to continue approach, do not overfly the mainland. Turn shortest way onto a southerly heading climbing above 8700; attempt contact on any published frequency.</p>									
RADHAZ - Helicopters				<p>a. 2.2nm NW of Akrotiri 315 AMSL. Avoid by 1500 AGL or 0.5nm. b. 2.2nm NE of Akrotiri 385 AMSL. Avoid by 1500 AGL or 1000m. c. 1.6nm SE of Akrotiri. Avoid by 1100 AGL or 300m</p>					
RADHAZ - Fixed Wing				<p>a. Fixed wing acft are to avoid the 'deadside' area to the north of Akrotiri up to 5800 AGL. b. 1.6nm SE of Akrotiri. Avoid by 1100 AGL or 300m.</p>					

AKROTIRI
APATC-1

RADAR PROCEDURES

06 JUL 06

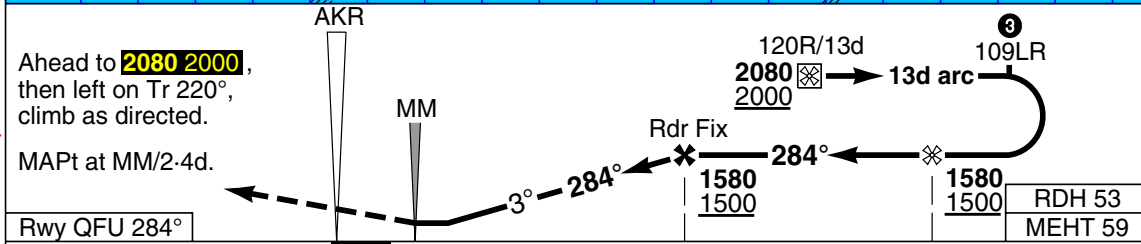
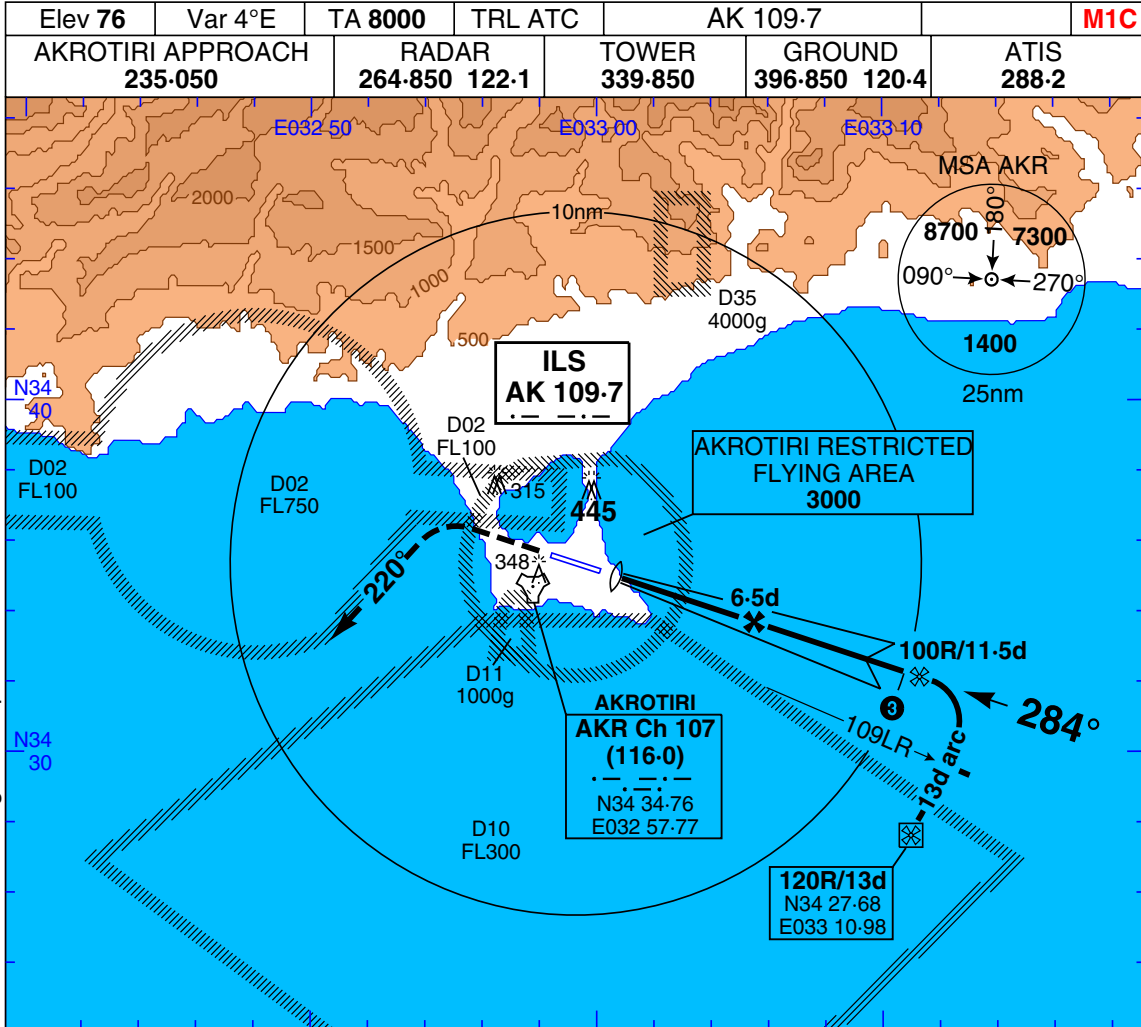
TAC to ILS Rwy 28

AKROTIRI

LCRA/AKT CYPRUS

Changes: Freqs

No1 AIDU (RAF)/European Aeronautical Group Aerod LCRAM1



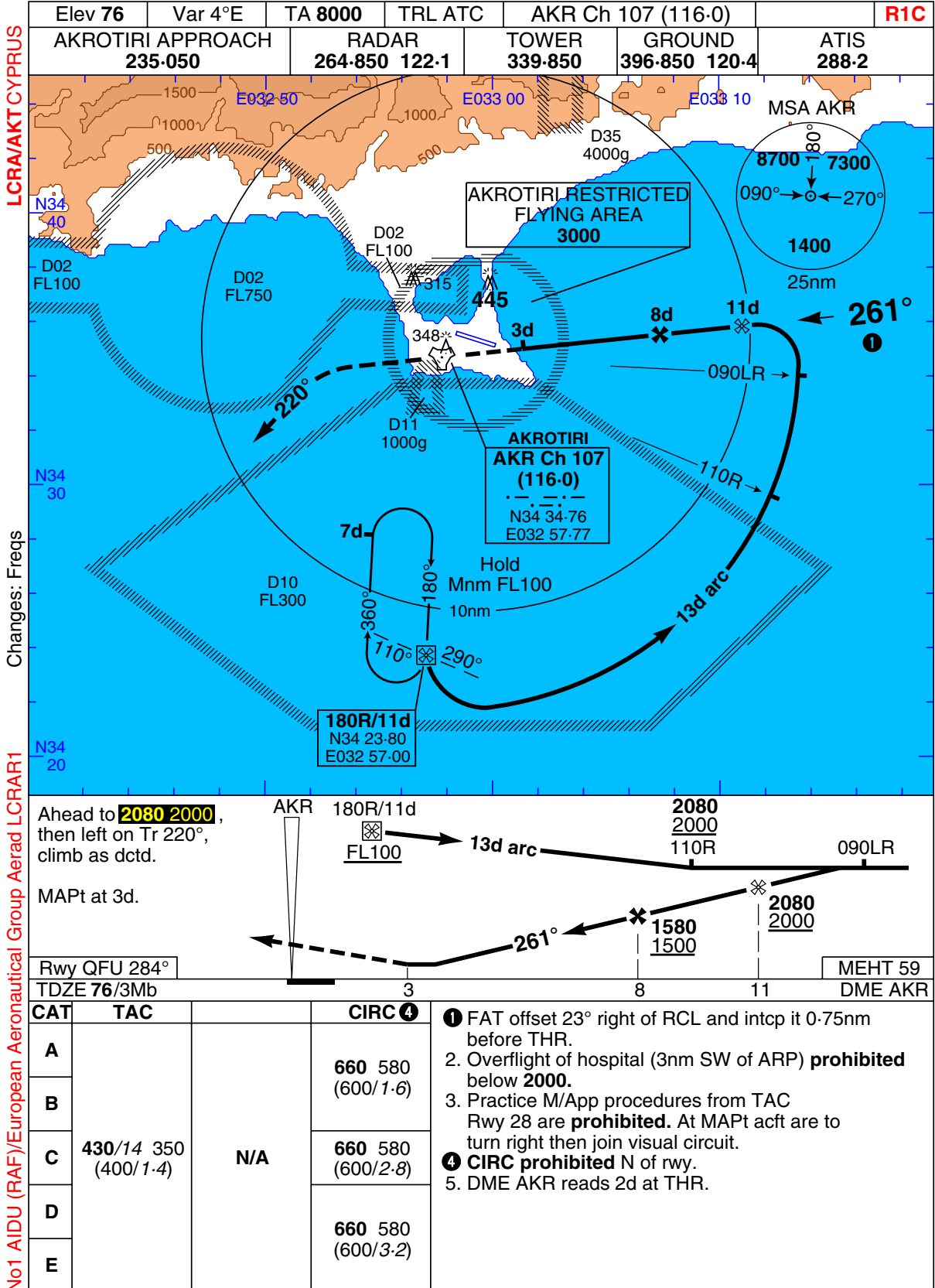
CAT	ILS	LLZ	CIRC ④	DME AKR	ALT HGT
A			660 580 (600/1.6)	6	1410
B			660 580 (600/2.4)	5	1110
C	280/14 200 (200/1.4)	370/14 290 (300/1.4)	660 580 (600/2.4)	4	810
D			660 580 (600/3.2)	3	730
E					510
GS (kt)		80 120 150 180 210			430
FAF-MAPt 4.1nm		3:06 2:03 1:38 1:22 1:10			
ROD (fpm)		3° 420 640 800 950 1110			

AKROTIRI
APATC-1

TAC to ILS Rwy 28

TAC Rwy 28

AKROTIRI



AKROTIRI
APATC-1

TAC Rwy 28

13 MAY 04

INTENTIONALLY BLANK