

VYKI — KANTI

*Note: The following sections in this chapter are intentionally left blank:
AD 2.15, AD 2.16, AD 2.21, AD 2.22, AD 2.23.*

VYKI AD 2.1 AERODROME LOCATION INDICATOR AND NAME

VYKI — KANTI

VYKI AD 2.2 AERODROME GEOGRAPHICAL AND ADMINISTRATIVE DATA

1	ARP coordinates and site at AD	255919.49N 0954028.88E Centre of runway centre line
2	Direction and distance from city	0.8 KM South of town
3	Elevation/Reference temperature	204.7 M (672 FT)/Nil
4	Geoid undulation at ARP	Nil
5	MAG VAR/Annual change	1° W (1956)/annual change negligible
6	AD Administration, address, telephone, telefax, telex, AFS	DEPARTMENT OF CIVIL AVIATION Post: Kanti airport KANTI CHIN STATE MYANMAR Tel: 071 9000232 AFTN: VYKIYDYX
7	Types of traffic permitted (IFR/VFR)	IFR/VFR
8	Remarks	Nil

VYKI AD 2.3 OPERATIONAL HOURS

1	AD Administration	HO
2	Customs and immigration	HS
3	Health and sanitation	Health: Nil Sanitation: Nil
4	AIS Briefing Office	Nil
5	ATS Reporting Office (ARO)	Nil
6	MET Briefing Office	Nil
7	ATS	HO
8	Fuelling	Nil
9	Handling	Nil
10	Security	Nil
11	De-icing	Nil
12	Remarks	Nil

VYKI AD 2.4 HANDLING SERVICES AND FACILITIES

1	Cargo-handling facilities	Baggage Trolleys / Carts
2	Fuel/oil types	Fuel: Nil Oil: Nil
3	Fuelling facilities/capacity	Nil
4	De-icing facilities	Nil
5	Hangar space for visiting aircraft	Nil
6	Repair facilities for visiting aircraft	Nil
7	Remarks	Nil

VYKI AD 2.5 PASSENGER FACILITIES

1	Hotels	Nil
2	Restaurants	Available at airport compound
3	Transportation	Nil
4	Medical facilities	Hospital in town
5	Bank and Post Office	Bank: Nil Post: Nil
6	Tourist Office	Nil
7	Remarks	Nil

VYKI AD 2.6 RESCUE AND FIRE FIGHTING SERVICES

1	AD category for fire fighting	CAT2
2	Rescue equipment	CAT 2
3	Capability for removal of disabled aircraft	Nil
4	Remarks	Nil

VYKI AD 2.7 SEASONAL AVAILABILITY — CLEARING

There is no requirement for clearing as the aerodrome is available throughout the year.

VYKI AD 2.8 APRONS, TAXIWAYS AND CHECK LOCATIONS DATA

1	Apron surface and strength and area	Surface: Bitumen Strength: 20,412 kg Area: 61 M x 61 M
2	Taxiway width, surface and strength	Nil
3	ACL location and elevation	Nil
4	VOR checkpoints	Nil
5	INS checkpoints	Nil
6	Remarks	Nil

VYKI AD 2.9 SURFACE MOVEMENT GUIDANCE AND CONTROL SYSTEM AND MARKINGS

1	Aircraft stand ID signs	Nil
	TWY guide lines	
	Visual docking/parking guidance system of aircraft stands	
2	RWY and TWY markings and LGT	RWY: Designation, THR, aiming point, centre line, edge
3	Stop bars	Nil
4	Remarks	Nil

VYKI AD 2.10 AERODROME OBSTACLES

In Area 2

Designator	Part ID	Type	Coordinates	ELEV	HGT	Marking/LGT type, colour	Remarks
1	2	3	4	5	6	7	8
MCW ANTENNA	Nil	Antenna	255915.36N 0954201.68E	211M (692 FT)	Nil	LGT	Nil
OBST 07	Nil	Building	260158.73N 0953227.67E	1374M (4508 FT)	Nil	LGT	Nil
OBST 10	Nil	Building	255947.98N 0953627.32E	448M (1470 FT)	Nil	LGT	Nil

In Area 3

Designator	Part ID	Type	Coordinates	ELEV	HGT	Marking/LGT type, colour	Remarks
1	2	3	4	5	6	7	8
Nil							

VYKI AD 2.11 METEOROLOGICAL INFORMATION PROVIDED

1	Associated MET Office	to be notified
---	-----------------------	----------------

VYKI AD 2.12 RUNWAY PHYSICAL CHARACTERISTICS

RWY Designations	TRUE & MAG BRG	Dimensions of RWY	Strength (PCN) and surface of RWY and SWY	THR & RWY end coordinates THR geoid undulation	THR elevation and highest elevation of TDZ of precision APP RWY
1	2	3	4	5	6
03	033°	1829 M x 30 M	20,412 KG	255857.37N0954012.33E	204.7M
21	213°		Bitumen	255941.62N0954045.44E	204.7M

Slope of RWY-SWY	SWY dimensions	CWY dimensions (M)	Strip dimensions	OFZ	Remarks
7	8	9	10	11	12
0%	RWY 03 23 M x 30 M	Nil	1950 M x 152 M	Nil	Nil

VYKI AD 2.13 DECLARED DISTANCES

RWY Designator	THR or start of take off run	TORA	TODA	ASDA	LDA	Remarks
1	2	3	4	5	6	7
03	THR	1829 M	1829 M	1852 M	1829 M	Nil
21	THR	1829 M	1829 M	1829 M	1829 M	Nil

VYKI AD 2.14 APPROACH AND RUNWAY LIGHTING

RWY Designator	APCH LGT type LEN INTST	RTHL colour WBAR	VASIS (MEHT) PAPI	RTZL LEN	RCLL LEN, spacing, colour, INTST	REDL LEN, spacing, colour, INTST	RENL colour, WBAR	STWL LEN, colour	Remarks
1	2	3	4	5	6	7	8	9	10
03	Nil	Nil	Nil	Nil	Nil	Nil	Nil	Nil	Nil
21	Nil	Nil	Nil	Nil	Nil	Nil	Nil	Nil	Nil

VYKI AD 2.17 AIR TRAFFIC SERVICES AIRSPACE

Name	Unit providing service	Call sign	Transition altitude	Remarks
Lateral limits Vertical limits Class of airspace		Languages Area and conditions of use Hours of service		
1	2	3	4	5
KANTI ATZ Circle: radius 15 NM, centred at 255919.49N 0954028.88E ARP C FL 1500 GND	KANTI TOWER	KANTI TWR: EN HO	13000 FT	Nil
KANTI CTR Circle: radius 20 NM, centred at 255919.49N 0954028.88E ARP C FL 130 GND	KANTI APPROACH CONTROL OFFICE	KANTI APP: EN HO	13000 FT	Nil

VYKI AD 2.18 ATS COMMUNICATION FACILITIES

Service designation	Call sign	Channel	Hours of operation	Remarks
1	2	3	4	5
APP	Kanti Approach	119.7 MHz	HO	Nil
TWR	Kanti Tower	118.7 MHz	HO	Nil

VYKI AD 2.19 RADIO NAVIGATION AND LANDING AIDS

Type of aid CAT of ILS/MLS (MAG VAR)	ID	Frequency	Hours of operation	Transmitting antenna coordinates	Elevation of DME transmitting antenna	Remarks
1	2	3	4	5	6	7
NDB	KI	230 kHz	HO	255925.82N 0954042.23E	Not applicable	Coverage: 50 NM Em: NONA2A

VYKI AD 2.20 LOCAL TRAFFIC REGULATIONS**1 AIRPORT REGULATIONS**

Kanti Airport complies Manual of Aerodrome Standards (MOAS). This aerodrome standard include the following.

- a. Physical characteristic
- b. Obstacle restriction and Limitation
- c. Visual aids provided by aerodrome marking, markers and signs
- d. Aerodrome lighting
- e. Operating standard for certified aerodrome
- f. Aerodrome facilities

2 TAXIING TO AND FROM STANDS

Arriving aircraft will be allocated a stand number by the TWR.

VYKI AD 2.24 CHARTS RELATED TO AN AERODROME

Aerodrome Chart - ICAO [VYKI AD 2-7](#)
Instrument Approach Chart - ICAO - RWY 03 NDB [VYKI AD 2-9](#)

PAGE INTENTIONALLY LEFT BLANK

AERODROME CHART - ICAO

25°59' 19. 49"N
95°40' 28. 88"E

TWR 118.7

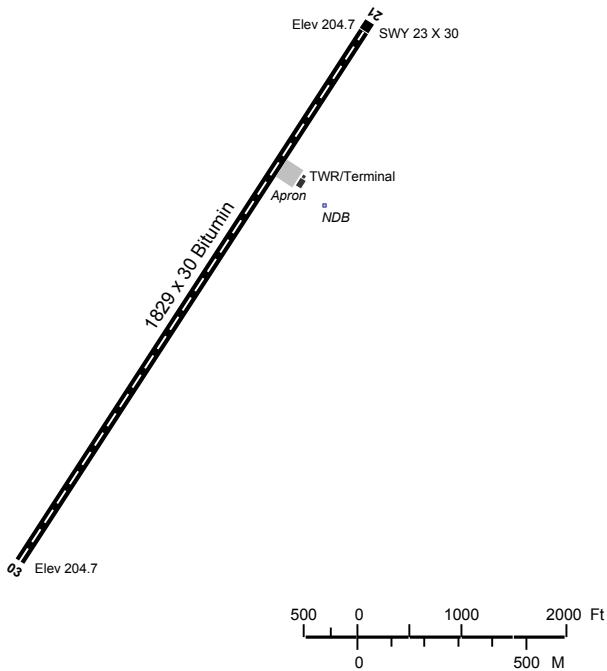
KANTI/Kanti

AD ELEV 204.7 M

RWY	DIRECTION	THR	BEARING STRENGTH
03	033°	25°58'57.37"N 95°40'12.33"E	20412 Kg Runway
21	213°	25°59'41.62"N 95°40'45.44"E	



ELEVATION AND DIMENSION IN METRE
BEARINGS ARE MAGNETIC



MARKING AIDS RWY 03/21 AND EXIT TWY



NO LIGHTING AIDS SERVED FOR BOTH RWY

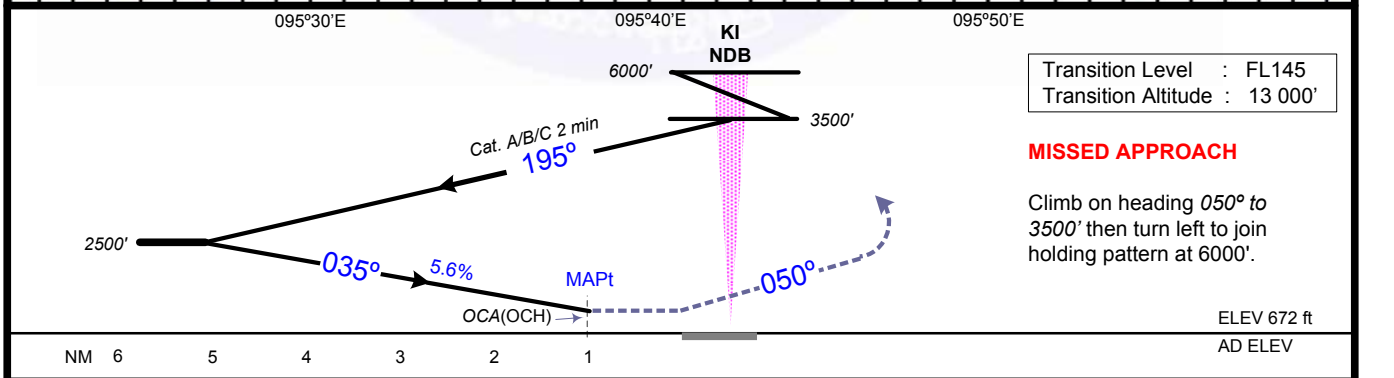
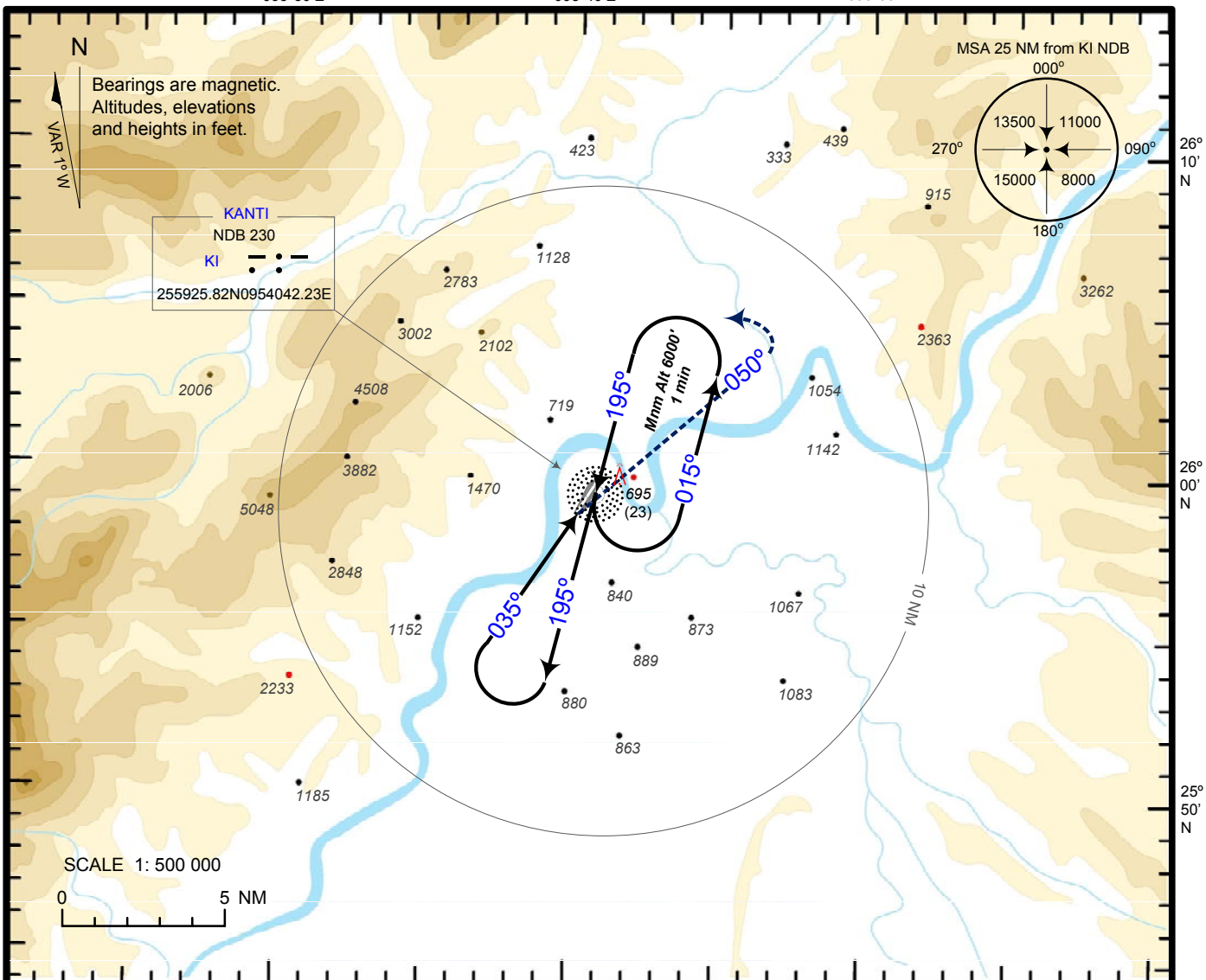
PAGE INTENTIONALLY LEFT BLANK

**INSTRUMENT
APPROACH
CHART - ICAO**

AERODROME ELEV - 672 ft
HEIGHTS RELATED TO AD ELEV
25°59'19.49"N 095°40'28.88"E

TWR	118.7
APP	119.7

**KANTI/Kanti
NDB
RWY 03**



OCA (OCH)			
Category of aircraft	A	B	C
Straight - in	1040 (370)		
Circling	1870 (1200)		

PAGE INTENTIONALLY LEFT BLANK