

**Contact**

Post:

AERONAUTICAL  
INFORMATION SERVICES  
Department of Civil Aviation  
ATC Operations Building  
Yangon International airport  
YANGON 11021, MYANMAR

Tel: 95 1 533085

Fax: 95 1 533085/533016

AFTN: VYYYYOYX

URL: [www.ais.gov.mm](http://www.ais.gov.mm)mailto: [aiso@ais.gov.mm](mailto:aiso@ais.gov.mm)**AIS Publications****AMDT****01/2019****Effective date****14 JAN 2019****Publication date****01 JAN 2019****SIGNIFICANT CHANGES IN YANGON FIR****SUNRISE / SUNSET TABLE FOR THE YEAR 2019, PUBLIC HOLIDAYS, VYYY ADC , VYNT ADC, VYDW VOR/DME16 and ID of VYBG NDB****1 GENERAL(GEN)**

<b>PREFACE</b>	GEN 0.1
<b>TABLE AND CODE</b>	GEN 2.1
<b>LIST OF RADIO NAVIGATION AIDS</b>	GEN 2.5
<b>SUNRISE/SUNSET TABLE</b>	GEN 2.7

**2 AERODROME(AD)**

- AD 2.VYYY-ADC
- AD 2.VYDW-VOR/DME16
- AD 2.VYNT-ADC

3 Insert the attachment replacement pages which are marked with highlighted in the checklist of pages: GEN 0.4-1 to GEN 0.4-3.

4 Record of AIP Amendments: GEN 0.2-1.

5 Records of Current AIP Supplements: GEN 0.3-1.

6 List of Hand amendments to the AIP: GEN 0.5-1.

7 This amendment incorporates information contained in the following AIP SUP, AIC and NOTAM which are hereby cancelled:

- AIP SUP: Nil
- AIC: Nil
- NOTAM: Nil

8 Monthly NOTAM Lists are available on [www.ais.gov.mm](http://www.ais.gov.mm).

9 AIS Myanmar certified **ISO 9001:2015 Quality Management System** Effective From 01 JAN 2018.

**Amended Pages**

GEN 0.1-1/2:	: <i>replaced.</i>
GEN 0.2-1:	: <i>replaced.</i>
GEN 0.4-1/2:	: <i>replaced.</i>
GEN 0.4-3:	: <i>replaced.</i>
GEN 0.5-1:	: <i>replaced.</i>
GEN 2.1-1/2:	: <i>replaced.</i>
GEN 2.5-1/2:	: <i>replaced.</i>
GEN 2.7-1/2:	: <i>replaced.</i>
ENR 4.1-1/2:	: <i>replaced.</i>

AD 2.VYYY-9/10: : *replaced.*  
AD 2.VYYY-ADC: : *replaced.*  
AD 2.VYYY-ILS/DME21 : : *remove.*  
AD 2.VYBG-5/6: : *replaced.*  
AD 2.VYDW-5/6: : *replaced.*  
AD 2.VYDW-VOR/DME16: : *replaced.*  
AD 2.VYHH-1/2: : *replaced.*  
AD 2.VYHH-5: : *replaced.*  
AD 2.VYMK-1/2: : *replaced.*  
AD 2.VYNT-1/2: : *replaced.*  
AD 2.VYNT-7: : *replaced.*  
AD 2.VYNT-ADC: : *replaced.*  
AD 2.VYPN-5: : *replaced.*  
AD 2.VYPT-3/4: : *replaced.*

## Part 1 — General (GEN)

### GEN 0

#### GEN 0.1 PREFACE

##### 1 Name of the publishing authority

The AIP Myanmar is published by the Department of Civil Aviation, Myanmar.

##### 2 Applicable ICAO documents

The AIP is prepared in accordance with the Standards and Recommended Practices (SARPs) of Annex 15 to the Convention on International Civil Aviation and the Aeronautical Information Services Manual (ICAO Doc 8126). Charts contained in the AIP are produced in accordance with Annex 4 to the Convention on International Civil Aviation and the Aeronautical Chart Manual (ICAO Doc 8697).

Differences from ICAO Standards, Recommended Practices and Procedures are given in subsection [GEN 1.7](#).

##### 3 The AIP structure and established regular amendment interval

###### 3.1 The AIP structure

The AIP forms part of the Integrated Aeronautical Information Package, details of which are given in subsection [GEN 3.1](#). The principal AIP structure is shown in graphic form in page [GEN 0.1.3](#).

The AIP is made up of three Parts, General ([GEN](#)), En-route ([ENR](#)) and Aerodromes ([AD](#)), each divided into sections and subsections as applicable, containing various types of information subjects.

###### 3.1.1 Part 1 — GENERAL (GEN)

Part 1 consists of five sections containing information as briefly described hereafter.

[GEN 0](#). — Preface; Record of AIP Amendments; Record of AIP Supplements; Checklist of AIP pages; List of hand amendments to the AIP; and the Table of Contents to Part 1.

[GEN 1](#). — *National regulations and requirements* - Designated authorities; Entry, transit and departure of aircraft; Entry, transit and departure of passengers and crew; Entry, transit and departure of cargo; Aircraft instruments, equipment and flight documents; Summary of national regulations and international agreements/conventions; and Differences from ICAO Standards, Recommended Practices and Procedures.

[GEN 2](#). — *Tables and Codes* - Measuring system, aircraft markings, holidays; Abbreviations used in AIS publications; Chart symbols; Location indicators; List of radio navigation aids; Conversion tables; and Sunrise/Sunset tables.

[GEN 3](#). — *Services* - Aeronautical Information Services; Aeronautical Charts; Air Traffic Services; Communication Services; Meteorological Services; and Search and Rescue Services.

[GEN 4](#). — *Charges for Aerodromes and Air Navigation Services* - Aerodrome/heliport charges; and Air navigation services charges.

###### 3.1.2 Part 2 — EN-ROUTE (ENR)

Part 2 consists of seven sections containing information as briefly described hereafter.

[ENR 0](#). — Table of Contents to Part 2.

[ENR 1](#). — *General rules and procedures* - General rules; Visual flight rules; Instrument flight rules; ATS Airspace Classification, Holding approach and departure procedures; Radar services and procedures; Altimeter setting procedures; Regional supplementary procedures; Air traffic flow management; Flight planning; Addressing of flight plan messages; Interception of civil aircraft; Unlawful interference; and Air traffic incidents.

[ENR 2](#). — *Air Traffic Services Airspace* - Detailed description of Flight information regions (FIR); Terminal control area (TMA); and other regulated airspace.

[ENR 3](#) . —ATS routes - Detailed description of ATS routes; Area navigation routes; Helicopter routes; other routes and En - route holding.

[ENR 4](#) . — *Radio Navigation Aids/Systems* - Radio navigation aids - en-route; Special navigation systems; Name - code designators for significant points; and Aeronautical ground lights - en-route.

[ENR 5](#) . — *Navigation Warnings* - Prohibited, restricted and danger areas; Military exercise and training areas; Other activities of a dangerous nature; Air navigation obstacles - en-route; Aerial sporting and recreational activities; and Bird migration and area with sensitive fauna.

[ENR 6](#) . — *En-route Charts* - En-route Chart - ICAO and index charts.

### 3.1.3 Part 3 — AERODROMES (AD)

Part 3 consists of three sections containing information as briefly described hereafter.

[AD 0](#) . — The Table of Contents to part 3.

[AD 1](#) . — *Aerodromes - Introduction* - Aerodrome availability; Rescue and fire fighting services; Index to aerodromes; and grouping of aerodromes.

[AD 2](#) . — *Aerodromes* - Detailed information about aerodromes, including helicopter landing areas, if located at the aerodrome.

[AD 3](#) . — *Heliports* -This section has been omitted as there is no heliport in Myanmar.

### 3.2 Regular Amendment Interval

← Regular Amendments to the AIP Myanmar will be issued in every three months. The publication dates for the year 2019 are as follows:

AMDT NR	PUBLICATION DATE
← 01/2019	01 JAN 2019
← 02/2019	01 APR 2019
← 03/2019	01 JUL 2019
04/2019	01 OCT 2019

## 4 Service to contact in case of detected AIP errors or omission

In the compilation of the AIP, care has been taken to ensure that the information contained therein is accurate and complete. Any error and omission which may nevertheless be detected should be referred to:

Post:

AERONAUTICAL INFORMATION SERVICES  
Department of Civil Aviation ATC Operations Building Yangon International airport  
YANGON 11021, MYANMAR

Tel: 95 1 533085

Fax: 95 1 533085/533016

AFTN: VYYYYOYX

URL: [www.ais.gov.mm](http://www.ais.gov.mm)

mailto: [aiso@ais.gov.mm](mailto:aiso@ais.gov.mm)

**GEN 0.2 RECORD OF AIP AMENDMENTS****AIP AMENDMENT**

<b>NR/Year</b>	<b>Publication date</b>	<b>Date inserted</b>	<b>Inserted by</b>
01/2016	24 JUN 2016	08 JUL 2016	
02/2017	02 MAR 2017	15 MAR 2017	
01/2019	01 JAN 2019	14 JAN 2019	

**AIRAC AIP AMENDMENT**

<b>NR/Year</b>	<b>Publication date</b>	<b>Effective date</b>	<b>Inserted by</b>
02/2016	13 OCT 2016	10 NOV 2016	
01/2017	03 AUG 2017	14 SEP 2017	
01/2018	07 DEC 2017	04 JAN 2018	
02/2018	01 MAR 2018	29 MAR 2018	
03/2018	16 AUG 2018	13 SEP 2018	
04/2018	22 NOV 2018	03 JAN 2019	

*PAGE INTENTIONALLY LEFT BLANK*

**GEN 0.4 CHECKLIST OF AIP PAGES**

<b>Part 1 – General (GEN)</b>							
<b>GEN 0</b>		GEN 3.4-Telephone	04 JAN 2018	ENR 3.1-6		03 JAN 2019	
GEN 0.1-1	10 NOV 2016	GEN 3.5-1	04 JAN 2018	ENR 3.1-7		03 JAN 2019	
GEN 0.1-2	14 JAN 2019	GEN 3.5-2	04 JAN 2018	ENR 3.1-8		03 JAN 2019	
GEN 0.1-3	01 JAN 2015	GEN 3.5-3	01 JAN 2013	ENR 3.1-9		03 JAN 2019	
GEN 0.2-1	14 JAN 2019	GEN 3.6-1	03 JAN 2019	ENR 3.1-10		04 JAN 2018	
GEN 0.3-1	03 JAN 2019	GEN 3.6-2	03 JAN 2019	ENR 3.1-11		03 JAN 2019	
GEN 0.3-2	03 JAN 2019	GEN 3.6-SAR	14 SEP 2017	ENR 3.1-12		03 JAN 2019	
GEN 0.4-1	14 JAN 2019	<b>GEN 4</b>		ENR 3.1-13		03 JAN 2019	
GEN 0.4-2	14 JAN 2019	GEN 4.1-1	29 MAR 2018	ENR 3.1-14		04 JAN 2018	
GEN 0.4-3	14 JAN 2019	GEN 4.1-2	23 JUN 2016	ENR 3.1-15		03 JAN 2019	
GEN 0.5-1	14 JAN 2019	GEN 4.2-1	23 JUN 2016	ENR 3.1-16		03 JAN 2019	
GEN 0.6-1	15 MAR 2017	<b>Part 2 – En-route (ENR)</b>		ENR 3.1-17		03 JAN 2019	
GEN 0.6-2	04 JAN 2018	<b>ENR 0</b>		ENR 3.1-18		03 JAN 2019	
<b>GEN 1</b>		ENR 0.6-1	10 NOV 2016	ENR 3.1-19		03 JAN 2019	
GEN 1.1-1	04 JAN 2018	ENR 0.6-2	23 JUN 2016	ENR 3.1-20		04 JAN 2018	
GEN 1.2-1	23 JUN 2016	<b>ENR 1</b>		ENR 3.1-21		04 JAN 2018	
GEN 1.2-2	23 JUN 2016	ENR 1.1-1	14 SEP 2017	ENR 3.1-22		04 JAN 2018	
GEN 1.2-3	23 JUN 2016	ENR 1.1-2	29 MAR 2018	ENR 3.1-23		04 JAN 2018	
GEN 1.3-1	23 JUN 2016	ENR 1.1-3	23 JUN 2016	ENR 3.1-24		04 JAN 2018	
GEN 1.3-2	23 JUN 2016	ENR 1.1-4	23 JUN 2016	ENR 3.1-25		04 JAN 2018	
GEN 1.4-1	23 JUN 2016	ENR 1.1-5	23 JUN 2016	ENR 3.1-26		04 JAN 2018	
GEN 1.4-2	10 NOV 2016	ENR 1.1-6	23 JUN 2016	ENR 3.1-27		04 JAN 2018	
GEN 1.5-1	10 NOV 2016	ENR 1.1-7	23 JUN 2016	ENR 3.1-28		04 JAN 2018	
GEN 1.6-1	10 NOV 2016	ENR 1.1-8	23 JUN 2016	ENR 3.1-29		14 SEP 2017	
GEN 1.6-2	10 NOV 2016	ENR 1.1-9	10 NOV 2016	ENR 3.1-30		03 JAN 2019	
GEN 1.6-3	23 JUN 2016	ENR 1.1-VFRROUTES	10 NOV 2016	ENR 3.1-31		03 JAN 2019	
GEN 1.7-1	13 SEP 2018	ENR 1.2-1	10 NOV 2016	ENR 3.1-32		03 JAN 2019	
GEN 1.7-2	03 JAN 2019	ENR 1.2-2	23 JUN 2016	ENR 3.1-33		03 JAN 2019	
GEN 1.7-3	03 JAN 2019	ENR 1.3-1	23 JUN 2016	ENR 3.1-34		03 JAN 2019	
GEN 1.7-4	03 JAN 2019	ENR 1.4-1	14 SEP 2017	ENR 3.1-35		03 JAN 2019	
GEN 1.7-5	03 JAN 2019	ENR 1.5-1	23 JUN 2016	ENR 3.1-36		04 JAN 2018	
GEN 1.7-6	03 JAN 2019	ENR 1.5-2	10 NOV 2016	ENR 3.1-37		03 JAN 2019	
<b>GEN 2</b>		ENR 1.5-3	10 NOV 2016	ENR 3.1-38		03 JAN 2019	
GEN 2.1-1	14 JAN 2019	ENR 1.5-4	10 NOV 2016	ENR 3.1-39		04 JAN 2018	
GEN 2.1-2	14 JAN 2019	ENR 1.5-5	10 NOV 2016	ENR 3.1-40		04 JAN 2018	
GEN 2.2-1	13 SEP 2018	ENR 1.5-6	10 NOV 2016	ENR 3.1-41		14 SEP 2017	
GEN 2.2-2	13 SEP 2018	ENR 1.5-7	10 NOV 2016	ENR 3.1-42		03 JAN 2019	
GEN 2.2-3	13 SEP 2018	ENR 1.5-8	10 NOV 2016	ENR 3.1-43		04 JAN 2018	
GEN 2.2-4	13 SEP 2018	ENR 1.6-1	23 JUN 2016	ENR 3.1-44		04 JAN 2018	
GEN 2.2-5	13 SEP 2018	ENR 1.6-2	23 JUN 2016	ENR 3.1-45		04 JAN 2018	
GEN 2.2-6	13 SEP 2018	ENR 1.6-3	23 JUN 2016	ENR 3.1-46		04 JAN 2018	
GEN 2.2-7	13 SEP 2018	ENR 1.6-4	23 JUN 2016	ENR 3.1-47		04 JAN 2018	
GEN 2.2-8	13 SEP 2018	ENR 1.6-RadarCov	01 APR 2014	ENR 3.1-48		04 JAN 2018	
GEN 2.2-9	13 SEP 2018	ENR 1.6-RCAGCov	01 APR 2014	ENR 3.1-49		04 JAN 2018	
GEN 2.3-1	23 JUN 2016	ENR 1.7-1	10 NOV 2016	ENR 3.1-50		04 JAN 2018	
GEN 2.3-2	08 JUL 2016	ENR 1.7-2	23 JUN 2016	ENR 3.1-51		04 JAN 2018	
GEN 2.4-1	29 MAR 2018	ENR 1.7-3	23 JUN 2016	ENR 3.1-52		04 JAN 2018	
GEN 2.4-2	23 JUN 2016	ENR 1.7-4	23 JUN 2016	ENR 3.1-53		04 JAN 2018	
GEN 2.5-1	14 JAN 2019	ENR 1.9-1	23 JUN 2016	ENR 3.1-INTL		03 JAN 2019	
GEN 2.5-2	14 JAN 2019	ENR 1.9-2	23 JUN 2016	ENR 3.1-DOM		10 NOV 2016	
GEN 2.5-RADIOFAC	03 JAN 2019	ENR 1.10-1	23 JUN 2016	ENR 3.3-1		03 JAN 2019	
GEN 2.6-1	23 JUN 2016	ENR 1.10-2	23 JUN 2016	ENR 3.3-2		03 JAN 2019	
GEN 2.6-2	23 JUN 2016	ENR 1.11-1	10 NOV 2016	ENR 3.3-3		04 JAN 2018	
GEN 2.7-1	14 JAN 2019	ENR 1.12-1	10 NOV 2016	ENR 3.3-4		04 JAN 2018	
GEN 2.7-2	14 JAN 2019	ENR 1.12-2	23 JUN 2016	ENR 3.3-5		04 JAN 2018	
<b>GEN 3</b>		ENR 1.13-1	23 JUN 2016	ENR 3.3-6		03 JAN 2019	
GEN 3.1-1	14 SEP 2017	<b>ENR 2</b>		ENR 3.3-7		04 JAN 2018	
GEN 3.1-2	23 JUN 2016	ENR 2.1-1	04 JAN 2018	ENR 3.3-8		03 JAN 2019	
GEN 3.1-3	10 NOV 2016	ENR 2.1-2	04 JAN 2018	ENR 3.3-9		03 JAN 2019	
GEN 3.1-4	10 NOV 2016	ENR 2.1-3	04 JAN 2018	ENR 3.3-10		04 JAN 2018	
GEN 3.2-1	23 JUN 2016	ENR 2.1-4	04 JAN 2018	ENR 3.3-11		04 JAN 2018	
GEN 3.2-2	10 NOV 2016	ENR 2.1-5	04 JAN 2018	ENR 3.3-12		04 JAN 2018	
GEN 3.3-1	14 SEP 2017	ENR 2.1-6	13 SEP 2018	ENR 3.3-13		03 JAN 2019	
GEN 3.3-2	13 SEP 2018	ENR 2.1-7	04 JAN 2018	ENR 3.6-1		23 JUN 2016	
GEN 3.3-3	03 JAN 2019	ENR 2.1-8	13 SEP 2018	<b>ENR 4</b>			
GEN 3.4-1	14 SEP 2017	<b>ENR 3</b>		ENR 4.1-1		14 JAN 2019	
GEN 3.4-2	23 JUN 2016	ENR 3.1-1	04 JAN 2018	ENR 4.1-2		03 JAN 2019	
GEN 3.4-3	14 SEP 2017	ENR 3.1-2	03 JAN 2019	ENR 4.4-1		03 JAN 2019	
GEN 3.4-4	14 SEP 2017	ENR 3.1-3	13 SEP 2018	ENR 4.4-2		04 JAN 2018	
GEN 3.4-5	14 SEP 2017	ENR 3.1-4	03 JAN 2019	ENR 4.5-1		23 JUN 2016	
GEN 3.4-Telegraph	04 JAN 2018	ENR 3.1-5	04 JAN 2018	<b>ENR 5</b>			
				ENR 5.1-1		13 SEP 2018	
				ENR 5.1-2		29 MAR 2018	
				ENR 5.1-3		13 SEP 2018	
				ENR 5.1-4		13 SEP 2018	

ENR 5.1-5	13 SEP 2018	AD 2.VYBG-ADC	04 JAN 2018	AD 2.VYKT-4	14 SEP 2017
ENR 5.1-6	13 SEP 2018	AD 2.VYBG-VOR/DME18	04 JAN 2018	AD 2.VYKT-5	29 MAR 2018
ENR 5.1-VYR20	12 NOV 2015	AD 2.VYBG-VOR/DME36	04 JAN 2018	AD 2.VYKT-ADC	29 MAR 2018
ENR 5.1-SHANTE	15 MAR 2017	AD 2.VYBG-NDB18	03 JAN 2019	VYKT AD 2-9	01 JAN 2011
ENR 5.1- DELTA	29 MAR 2018	AD 2.VYBG-NDB36	03 JAN 2019	AD 2.VYKU-1	23 JUN 2016
ENR 5.1-TRNG	13 SEP 2018	AD 2.VYBM-1	14 SEP 2017	AD 2.VYKU-2	23 JUN 2016
ENR 5.2-1	10 NOV 2016	AD 2.VYBM-2	14 SEP 2017	AD 2.VYKU-3	14 SEP 2017
ENR 5.2-2	03 JAN 2019	AD 2.VYBM-3	14 SEP 2017	AD 2.VYKU-4	14 SEP 2017
ENR 5.2-3	03 JAN 2019	AD 2.VYBM-4	14 SEP 2017	AD 2.VYKU-5	08 JUL 2016
ENR 5.2-4	03 JAN 2019	AD 2.VYBM-5	14 SEP 2017	AD 2.VYLK-1	14 SEP 2017
ENR 5.3-1	23 JUN 2016	VYBM AD 2-7	01 JAN 2011	AD 2.VYLK-2	14 SEP 2017
ENR 5.5-1	23 JUN 2016	VYBM AD 2-9	01 JAN 2011	AD 2.VYLK-3	03 JAN 2019
ENR 5.6-1	23 JUN 2016	VYBM AD 2-11	01 JAN 2011	AD 2.VYLK-4	14 SEP 2017
		AD 2.VYBP-1	14 SEP 2017	AD 2.VYLK-5	13 SEP 2018
		AD 2.VYBP-2	08 JUL 2016	AD 2.VYLK-ADC	03 JAN 2019
		AD 2.VYBP-3	14 SEP 2017	VYLK AD 2-9	01 JAN 2011
		AD 2.VYBP-4	14 SEP 2017	AD 2.VYLS-1	14 SEP 2017
		AD 2.VYBP-5	14 SEP 2017	AD 2.VYLS-2	14 SEP 2017
		AD 2.VYBP-ADC	01 APR 2011	AD 2.VYLS-3	13 SEP 2018
		AD 2.VYBP-VAC	01 JUL 2011	AD 2.VYLS-4	03 JAN 2019
		AD 2.VYDW-1	14 SEP 2017	AD 2.VYLS-5	03 JAN 2019
		AD 2.VYDW-2	14 SEP 2017	AD 2.VYLS-6	03 JAN 2019
		AD 2.VYDW-3	03 JAN 2019	VYLS AD 2-7	01 APR 2011
		AD 2.VYDW-4	14 SEP 2017	AD 2.VYLS-VAC	03 JAN 2019
		AD 2.VYDW-5	03 JAN 2019	AD 2.VYMD-1	14 SEP 2017
		AD 2.VYDW-6	14 JAN 2019	AD 2.VYMD-2	13 SEP 2018
		AD 2.VYDW-ADC	13 SEP 2018	AD 2.VYMD-3	13 SEP 2018
		AD 2.VYDW-VOR/DME16	14 JAN 2019	AD 2.VYMD-4	03 JAN 2019
		VYDW AD 2-13	01 JAN 2011	AD 2.VYMD-5	03 JAN 2019
		AD 2.VYHH-1	04 JAN 2018	AD 2.VYMD-6	13 SEP 2018
		AD 2.VYHH-2	14 JAN 2019	AD 2.VYMD-7	03 JAN 2019
		AD 2.VYHH-3	03 JAN 2019	AD 2.VYMD-8	13 SEP 2018
		AD 2.VYHH-4	14 SEP 2017	VYMD AD 2-8.1	12 NOV 2015
		AD 2.VYHH-5	14 JAN 2019	AD 2.VYMD-ADC	03 JAN 2019
		AD 2.VYHH-ADC	03 JAN 2019	VYMD AD 2-11	01 JAN 2011
		AD 2.VYHH-VOR/DME36	04 JAN 2018	VYMD AD 2-13	01 JAN 2011
		VYHH AD 2-9	01 JAN 2011	VYMD AD 2-15	01 JAN 2011
		AD 2.VYHL-1	13 SEP 2018	VYMD AD 2-17	01 JAN 2011
		AD 2.VYHL-2	13 SEP 2018	VYMD AD 2-19	01 APR 2011
		AD 2.VYHL-3	14 SEP 2017	AD 2.VYME-1	14 SEP 2017
		AD 2.VYHL-4	14 SEP 2017	AD 2.VYME-2	14 SEP 2017
		AD 2.VYHL-5	14 SEP 2017	AD 2.VYME-3	03 JAN 2019
		VYHL AD 2-7	01 APR 2011	AD 2.VYME-4	14 SEP 2017
		VYHL AD 2-9	01 JAN 2011	AD 2.VYME-5	03 JAN 2019
		VYHL AD 2-11	01 JAN 2011	AD 2.VYME-ADC	13 SEP 2018
		AD 2.VYKG-1	14 SEP 2017	AD 2.VYME-NDB18	13 SEP 2018
		AD 2.VYKG-2	14 SEP 2017	AD 2.VYME-NDB36	13 SEP 2018
		AD 2.VYKG-3	14 SEP 2017	AD 2.VYMK-1	13 SEP 2018
		AD 2.VYKG-4	14 SEP 2017	AD 2.VYMK-2	14 JAN 2019
		AD 2.VYKG-5	29 MAR 2018	AD 2.VYMK-3	03 JAN 2019
		AD 2.VYKG-6	04 JAN 2018	AD 2.VYMK-4	04 JAN 2018
		VYKG AD 2-7	12 NOV 2015	AD 2.VYMK-5	29 MAR 2018
		VYKG AD 2-9	01 JAN 2011	AD 2.VYMK-ADC	29 MAR 2018
		VYKG AD 2-11	01 JAN 2011	VYMK AD 2-9	01 JAN 2011
		AD 2.VYKI-1	03 JAN 2019	VYMK AD 2-11	01 JAN 2011
		AD 2.VYKI-2	14 SEP 2017	AD 2.VYMK-VOR/DME04	13 SEP 2018
		AD 2.VYKI-3	14 SEP 2017	AD 2.VYMK-VOR/DME22	13 SEP 2018
		AD 2.VYKI-4	14 SEP 2017	AD 2.VYMM-1	14 SEP 2017
		AD 2.VYKI-5	14 SEP 2017	AD 2.VYMM-2	14 SEP 2017
		VYKI AD 2-7	12 NOV 2015	AD 2.VYMM-3	14 SEP 2017
		VYKI AD 2-9	01 JAN 2011	AD 2.VYMM-4	14 SEP 2017
		AD 2.VYKL-1	04 JAN 2018	AD 2.VYMM-5	14 SEP 2017
		AD 2.VYKL-2	14 SEP 2017	VYMM AD 2-7	01 JAN 2011
		AD 2.VYKL-3	03 JAN 2019	VYMM AD 2-9	01 APR 2011
		AD 2.VYKL-4	03 JAN 2019	VYMM AD 2-11	01 APR 2011
		AD 2.VYKL-5	03 JAN 2019	AD 2.VYMN-1	04 JAN 2018
		AD 2.VYKL-6	03 JAN 2019	AD 2.VYMN-2	14 SEP 2017
		VYKL AD 2-7	01 JAN 2011	AD 2.VYMN-3	03 JAN 2019
		VYKL AD 2-9	01 APR 2011	AD 2.VYMN-4	13 SEP 2018
		AD 2.VYKP-1	04 JAN 2018	AD 2.VYMN-5	10 NOV 2016
		AD 2.VYKP-2	23 JUN 2016	AD 2.VYMS-1	14 SEP 2017
		AD 2.VYKP-3	14 SEP 2017	AD 2.VYMS-2	14 SEP 2017
		AD 2.VYKP-4	04 JAN 2018	AD 2.VYMS-3	14 SEP 2017
		AD 2.VYKP-5	13 SEP 2018	AD 2.VYMS-4	14 SEP 2017
		AD 2.VYKP-ADC	13 SEP 2018	AD 2.VYMS-5	14 SEP 2017
		VYKP AD 2-9	01 JAN 2011	VYMS AD 2-7	01 JAN 2011
		VYKP AD 2-11	01 JAN 2011	VYMS AD 2-9	01 APR 2011
		AD 2.VYKT-1	14 SEP 2017	AD 2.VYMW-1	14 SEP 2017
		AD 2.VYKT-2	03 JAN 2019	AD 2.VYMW-2	23 JUN 2016
		AD 2.VYKT-3	29 MAR 2018	AD 2.VYMW-3	03 JAN 2019

**Part 3 – Aerodromes (AD)**

**AD 0**

**AD 1**

**AD 2**



AD 2.VYMW-4	14 SEP 2017
AD 2.VYMW-5	14 SEP 2017
VYMW AD 2-7	01 JAN 2011
VYMW AD 2-9	01 JAN 2011
VYMW AD 2-11	01 JAN 2011
AD 2.VYMY-1	14 SEP 2017
AD 2.VYMY-2	14 SEP 2017
AD 2.VYMY-3	13 SEP 2018
AD 2.VYMY-4	13 SEP 2018
AD 2.VYMY-5	13 SEP 2018
VYMY AD 2-7	12 NOV 2015
AD 2.VYNT-1	13 SEP 2018
AD 2.VYNT-2	14 JAN 2019
AD 2.VYNT-3	13 SEP 2018
AD 2.VYNT-4	03 JAN 2019
AD 2.VYNT-5	13 SEP 2018
AD 2.VYNT-6	13 SEP 2018
AD 2.VYNT-7	14 JAN 2019
AD 2.VYNT-ADC	14 JAN 2019
AD 2.VYNT-ILS/DME16	10 NOV 2016
AD 2.VYNT-DVOR/DME16	10 NOV 2016
AD 2.VYNT-DVOR/DME34	10 NOV 2016
AD 2.VYNT-NDB/DME16	03 JAN 2019
AD 2.VYNT-NDB/DME34	03 JAN 2019
AD 2.VYPA-1	14 SEP 2017
AD 2.VYPA-2	23 JUN 2016
AD 2.VYPA-3	14 SEP 2017
AD 2.VYPA-4	14 SEP 2017
AD 2.VYPA-5	14 SEP 2017
AD 2.VYPN-1	13 SEP 2018
AD 2.VYPN-2	14 SEP 2017
AD 2.VYPN-3	04 JAN 2018
AD 2.VYPN-4	14 SEP 2017
AD 2.VYPN-5	14 JAN 2019
AD 2.VYPN-ADC	13 SEP 2018
AD 2.VYPN-NDB06	10 NOV 2016
AD 2.VYPN-NDB24	10 NOV 2016
AD 2.VYPN-VOR/DME06	10 NOV 2016
AD 2.VYPN-VOR/DME24	10 NOV 2016
AD 2.VYPT-1	14 SEP 2017
AD 2.VYPT-2	14 SEP 2017
AD 2.VYPT-3	14 JAN 2019
AD 2.VYPT-4	14 SEP 2017
AD 2.VYPT-5	14 SEP 2017
VYPT AD 2-7	01 JAN 2011
VYPT AD 2-9	01 JAN 2011
VYPT AD 2-11	01 JAN 2011
AD 2.VYPU-1	14 SEP 2017
AD 2.VYPU-2	23 JUN 2016
AD 2.VYPU-3	14 SEP 2017
AD 2.VYPU-4	14 SEP 2017
AD 2.VYPU-5	14 SEP 2017
AD 2.VYSW-1	13 SEP 2018
AD 2.VYSW-2	13 SEP 2018
AD 2.VYSW-3	03 JAN 2019
AD 2.VYSW-4	13 SEP 2018
AD 2.VYSW-5	04 JAN 2018
AD 2.VYSW-ADC	29 MAR 2018
AD 2.VYSW-VOR/DME11	04 JAN 2018
AD 2.VYSW-VOR/DME29	04 JAN 2018
AD 2.VYTD-1	14 SEP 2017
AD 2.VYTD-2	14 SEP 2017
AD 2.VYTD-3	03 JAN 2019
AD 2.VYTD-4	14 SEP 2017
AD 2.VYTD-5	04 JAN 2018
AD 2.VYTD-ADC	04 JAN 2018
AD 2.VYTD-VOR/DME02	04 JAN 2018
VYTD AD 2-9	01 JAN 2011
VYTD AD 2-11	01 JAN 2011
AD 2.VYTL-1	04 JAN 2018
AD 2.VYTL-2	03 JAN 2019
AD 2.VYTL-3	03 JAN 2019
AD 2.VYTL-4	04 JAN 2018
AD 2.VYTL-5	04 JAN 2018
AD 2.VYTL-ADC	04 JAN 2018
AD 2.VYTL-VOR/DME22	04 JAN 2018
VYTL AD 2-9	01 JAN 2011

*PAGE INTENTIONALLY LEFT BLANK*

## GEN 0.5 LIST OF HAND AMENDMENTS TO THE AIP

<i>AIP page(s) affected</i>	<i>Amendment text</i>	<i>Introduced by AIP Amendment NR</i>
VYKL AD 2-7/Chart ← ←	Amend ARP coordinates 231119.79N094030.17E to read as 231119.67N0940304.04E	AIRAC AMDT 4/15
	Amend THRS coordinates RWY09 231122.80N0940236.87E to read as 231124.86N0940218.75E RWY27 231116.78N0940329.48E to read as 231116.35N0940333.21E	
	Amend RWY Length 1676 x 30(M) to read as 2133 x 30(M)(7000)FT AD Elev 130.9 (M) to read as 133.8(M), THRS Elev 130.9(M) to read as 123.8(M), 122.3(M) to read as 123.1(M)	
	Amend Bearing 87° and 267° to read as 97° and 277°	AIRAC AIP AMDT 04/2018

*PAGE INTENTIONALLY LEFT BLANK*

# GEN 2 Tables and Codes

## GEN 2.1 MEASURING SYSTEM, AIRCRAFT MARKINGS, HOLIDAYS

### 1 Units of measurement

The table of units of measurement shown below will be used by aeronautical stations within Yangon FIR for air and ground operations.

<i>For measurement of</i>	<i>Units used</i>
Distance used in navigation, position reporting, etc., generally in excess of 2 to 3 nautical miles	NAUTICAL MILES AND TENTHS
Relatively short distances such as those relating to aerodromes (e.g. runway lengths)	METRES OR FEET
Altitudes, elevations and heights	METRES OR FEET
Horizontal speed including wind speed	KNOTS
Vertical speed	FEET PER MINUTE OR METRES PER SECOND
Wind direction for landing and take-off	DEGREES MAGNETIC
Wind direction except for landing and take-off	DEGREES TRUE
Visibility, including runway visual range	KILOMETRES OR METRES
Altimeter setting	HECTO PASCAL
Temperature	DEGREES CELSIUS
Mass	METRIC TONS OR KILOGRAMMES
Time	HOURS AND MINUTES, THE DAY OF 24 HOURS BEGINNING AT MIDNIGHT UTC

### 2 Time system

Coordinated Universal Time (UTC) is used by air navigation services and in publications issued by the Aeronautical Information Services. Reporting of time is expressed to the nearest full minute, e.g., 12 hr. 40 min. 40 sec. is reported as 1241. Local time is **6 1/2 hours ahead of UTC** in Myanmar. Time checks to aircraft are accurate to within 30 seconds.

### 3 Geodetic reference datum

#### 3.1 Name / designation of datum

All published geographical coordinates in the Yangon FIR indicating latitude and longitude are expressed in terms of the World Geodetic System – 1984 WGS-84 geodetic reference datum.

#### 3.2 Area of application

The area of application for the published geographical coordinates coincides with the area of responsibility of the Aeronautical Information Services, i.e. the entire territory of Myanmar as well as the airspace over the high seas encompassed by the Yangon Flight Information Region in accordance with the regional air navigation agreement.

### 4 Aircraft nationality and registration marks

The nationality mark for aircraft registered in the Republic of the Union of Myanmar are the letters XY. The nationality mark is followed by a hyphen and a registration mark consisting of 3 letters e.g XY-ADW.

### 5 Public holidays

	<i>Name</i>		<i>Date</i>		<i>Day</i>
←	International New Year's Holiday	1	January	2019	Tuesday
←	Independence Day	4	January	2019	Friday
	Kayin New Year	6	January	2019	Sunday
←	Union Day	12	February	2019	Tuesday
←	Peasant's Day	2	March	2019	Saturday
←	Full Moon Day of Tabaung	20	March	2019	Wednesday
←	Armed Forces Day	27	March	2019	Wednesday

	<b>Name</b>	<b>Date</b>			<b>Day</b>
←	Water Festival	13 - 16	April	2019	Saturday - Tuesday
←	Myanmar New Year Day	17	April	2019	Wednesday
←	Labour Day	1	May	2019	Wednesday
	Full Moon Day of Kasong	18	May	2019	Saturday
	Beginning of Buddhist Lent	16	July	2019	Tuesday
←	Martyrs' Day	19	July	2019	Friday
←	End of Buddhist Lent	12 - 14	October	2019	Saturday - Monday
←	Lighting Festival	10-11	November	2019	Sunday-Monday
←	National Day	21	November	2019	Thursday
←	Christmas Day	25	December	2019	Wednesday
	Kayin New Year	26	December	2019	Thursday
←	International New Year's Holiday	31	December	2019	Tuesday
	Depawali	*			
	Idul Athw aha	*			

\* The date will be notified later in due course.

## GEN 2.5 LIST OF RADIO NAVIGATION AIDS

ID	Station name	Facility	Purpose	Station name	ID	Facility	Purpose
AN	ANN	NDB	AE	ANISAKAN	AS	NDB	AE
AS	ANISAKAN	NDB	AE	ANN	AN	NDB	AE
← BGN	BAGAN	DVOR/DME	AE	BAGAN	BGN	DVOR/DME	AE
BGN	BAGAN	NDB	A	BAGAN	BGN	NDB	A
← BGO	YANGON	DVOR/DME	AE	← BANMAW	BM	NDB	AE
BM	BANMAW	NDB	AE	DAWEI	DWI	NDB	AE
DWI	DAWEI	NDB	AE	DAWEI	DWI	DVOR/DME	AE
DWI	DAWEI	DVOR/DME	AE	← HEHO	HHO	DVOR/DME	AE
← HGU	YANGON	DVOR/DME	AE	HEHO	HH	NDB	A
HH	HEHO	NDB	A	HOMMALINN	HL	NDB	AE
HHO	HEHO	DVOR/DME	AE	HPA-AN	PA	NDB	AE
HL	HOMMALINN	NDB	AE	KALAY	KL	NDB	AE
IMIA	MANDALAY INTERNATIONAL	ILS	A	KANTI	KI	NDB	AE
INPT	NAYPYITAW INTERNATIONAL	ILS	A	KAWTHOUNG	KT	NDB	AE
IYGN	YANGON	ILS	A	KENG TUNG	KTG	DVOR/DME	AE
KG	KENGTUNG	NDB	AE	KENGTUNG	KG	NDB	AE
KI	KANTI	NDB	AE	KYAUKPYU	KP	NDB	AE
KL	KALAY	NDB	AE	LASHIO	LSO	DVOR/DME	AE
KP	KYAUKPYU	NDB	AE	LASHIO	LSO	NDB	AE
KT	KAWTHOUNG	NDB	AE	← LOIKAW	LK	NDB	AE
KTG	KENG TUNG	DVOR/DME	AE	MAGWAY	MW	NDB	AE
LK	LOIKAW	NDB	AE	MANAUNG	MN	NDB	AE
LSO	LASHIO	DVOR/DME	AE	← MANDALAY INTERNATIONAL	MIA	NDB	AE
LSO	LASHIO	NDB	AE	MANDALAY INTERNATIONAL	MIA	VOR/DME	AE
← MDS	YANGON	NDB	AE	MANDALAY INTERNATIONAL	MDY	VOR/DME	E
MDY	MANDALAY INTERNATIONAL	VOR/DME	E	MANDALAY INTERNATIONAL	IMIA	ILS	A
ME	MYEIK	NDB	AE	MANDALAY INTERNATIONAL	IMIA	ILS	A
MIA	MANDALAY INTERNATIONAL	NDB	AE	← MAWLAMYINE	MM	NDB	AE
MIA	MANDALAY INTERNATIONAL	VOR/DME	AE	MONG-HSAT	MS	NDB	AE
← MK	MYITKYINA/PAMTI	NDB	AE	MONYWAR	MY	NDB	AE
MKA	MYITKYINA/NAMPONG	NDB	E	MYEIK	ME	NDB	AE
MKN	MYITKYINA	DVOR/DME	AE	MYITKYINA	MKN	DVOR/DME	AE
MM	MAWLAMYINE	NDB	AE	MYITKYINA/NAMPONG	MKA	NDB	E
MN	MANAUNG	NDB	AE	MYITKYINA/PAMTI	MK	NDB	AE
MS	MONG-HSAT	NDB	AE	NAMSANG	NS	NDB	AE
MW	MAGWAY	NDB	AE	← NAYPYITAW INTERNATIONAL	INPT	ILS	A
MY	MONYWAR	NDB	AE	NAYPYITAW INTERNATIONAL	NPT	DVOR/DME	AE
NPT	NAYPYITAW INTERNATIONAL	DVOR/DME	AE	NAYPYITAW INTERNATIONAL	NT	NDB	AE
NS	NAMSANG	NDB	AE	NAYPYITAW INTERNATIONAL	NT	NDB	AE
NT	NAYPYITAW INTERNATIONAL	NDB	AE	PATHEIN	PTN	VOR/DME	AE
PA	HPA-AN	NDB	AE	PATHEIN	PTN	NDB	AE
PT	PUTAO	NDB	AE	← SITTWE	PT	NDB	AE
← PTN	PATHEIN	VOR/DME	AE	TACHILEIK	STW	DVOR/DME	AE
PTN	PATHEIN	NDB	AE	← TACHILEIK	TL	NDB	AE
STW	SITTWE	DVOR/DME	AE	TAUNGOO	TGU	VOR/DME	AE
TCL	TACHILEIK	DVOR/DME	AE	← THANDWE	TGO	NDB	AE
TDE	THANDWE	DVOR/DME	AE	YANGON	TDE	DVOR/DME	AE
TGO	TAUNGOO	NDB	AE	YANGON	HGU	DVOR/DME	AE
				YANGON	IYGN	ILS	A

ID	Station name	Facility	Purpose	Station name	ID	Facility	Purpose
TGU	TAUNGOO	VOR/DME	AE ←	YANGON	BGO	DVOR/DME	AE
TL	TACHILEIK	NDB	AE ←	YANGON	MDS	NDB	AE

RADIO FACILITY INDEX CHART ..... [GEN 2.5-RADIOFAC](#)



**GEN 2.7 SUNRISE/SUNSET TABLES**

1 The sunrise/sunset table has been prepared by the Meteorological Service of Myanmar and is reproduced here with permission. The table represents the Yangon International Airport being served by the Myanmar air traffic services.

← 2 The times in the table are given in Local Mean Time for sunrise (SR) and sunset (SS) for the year 2019.

**← Sunrise / Sunset Table for the Year 2019**

Month	Jan		Feb		Mar		Apr		May		Jun	
Day	SR	SS	SR	SS	SR	SS	SR	SS	SR	SS	SR	SS
← 1	0633	1743	0635	1801	0622	1812	0559	1819	0539	1825	0530	1836
← 2	0633	1744	0635	1802	0622	1813	0558	1819	0538	1825	0530	1836
← 3	0634	1745	0635	1802	0621	1813	0558	1819	0538	1826	0530	1836
← 4	0634	1745	0635	1803	0620	1813	0557	1819	0537	1826	0530	1837
← 5	0634	1746	0634	1803	0620	1813	0556	1819	0537	1826	0530	1837
← 6	0635	1746	0634	1804	0619	1814	0555	1820	0536	1827	0530	1837
← 7	0635	1747	0634	1804	0618	1814	0555	1820	0536	1827	0530	1838
← 8	0635	1748	0633	1805	0618	1814	0554	1820	0536	1827	0530	1838
← 9	0635	1748	0633	1805	0617	1814	0553	1820	0535	1828	0530	1838
← 10	0636	1749	0633	1806	0616	1814	0552	1820	0535	1828	0530	1839
← 11	0636	1749	0632	1806	0615	1815	0552	1820	0534	1828	0530	1839
← 12	0636	1750	0632	1806	0615	1815	0551	1821	0534	1829	0530	1839
← 13	0636	1751	0631	1807	0614	1815	0550	1821	0534	1829	0530	1839
← 14	0636	1751	0631	1807	0613	1815	0550	1821	0533	1829	0530	1840
← 15	0636	1752	0630	1808	0612	1816	0549	1821	0533	1830	0530	1840
← 16	0636	1752	0630	1808	0612	1816	0548	1821	0533	1830	0530	1840
← 17	0636	1753	0629	1808	0611	1816	0547	1822	0532	1830	0531	1841
← 18	0637	1754	0629	1809	0610	1816	0547	1822	0532	1831	0531	1841
← 19	0637	1754	0628	1809	0609	1816	0546	1822	0532	1831	0531	1841
← 20	0637	1755	0628	1810	0609	1816	0545	1822	0531	1831	0531	1841
← 21	0637	1755	0627	1810	0608	1817	0545	1823	0531	1832	0531	1842
← 22	0637	1756	0627	1810	0607	1817	0544	1823	0531	1832	0532	1842
← 23	0637	1757	0626	1810	0606	1817	0544	1823	0531	1832	0532	1842
← 24	0636	1757	0626	1811	0605	1817	0543	1823	0531	1833	0532	1842
← 25	0636	1758	0625	1811	0605	1817	0542	1824	0530	1833	0532	1842
← 26	0636	1758	0624	1811	0604	1818	0542	1824	0530	1833	0533	1842
← 27	0636	1759	0624	1812	0603	1818	0541	1824	0530	1834	0533	1843
← 28	0636	1759	0623	1812	0602	1818	0541	1824	0530	1834	0533	1843
← 29	0636	1800			0602	1818	0540	1825	0530	1834	0533	1843
← 30	0636	1800			0601	1818	0539	1825	0530	1835	0534	1843
← 31	0636	1801			0600	1818			0530	1835		

Month	Jul		Aug		Sep		Oct		Nov		Dec	
Day	SR	SS	SR	SS	SR	SS	SR	SS	SR	SS	SR	SS
← 1	0534	1843	0544	1838	0550	1819	0554	1755	0602	1735	0617	1730
← 2	0534	1843	0544	1838	0550	1819	0554	1754	0602	1735	0617	1731
← 3	0535	1843	0544	1838	0551	1818	0554	1753	0602	1734	0618	1731
← 4	0535	1843	0545	1837	0551	1817	0554	1753	0603	1734	0618	1731
← 5	0535	1843	0545	1837	0551	1816	0555	1752	0603	1733	0619	1731
← 6	0535	1843	0545	1836	0551	1815	0555	1751	0604	1733	0620	1731
← 7	0536	1843	0545	1836	0551	1815	0555	1750	0604	1733	0620	1732
← 8	0536	1843	0546	1835	0551	1814	0555	1750	0604	1732	0621	1732
← 9	0536	1843	0546	1835	0551	1813	0555	1749	0605	1732	0621	1732
← 10	0537	1843	0546	1834	0551	1812	0555	1748	0605	1732	0622	1733
← 11	0537	1843	0546	1834	0552	1811	0556	1747	0606	1731	0622	1733
← 12	0537	1843	0547	1833	0552	1811	0556	1747	0606	1731	0623	1733
← 13	0538	1843	0547	1832	0552	1810	0556	1746	0607	1731	0624	1734

Month	Jul		Aug		Sep		Oct		Nov		Dec	
← 14	0538	1843	0547	1832	0552	1809	0556	1745	0607	1731	0624	1734
← 15	0538	1843	0547	1831	0552	1808	0556	1745	0608	1731	0625	1734
← 16	0539	1843	0547	1831	0552	1807	0557	1744	0608	1730	0625	1735
← 17	0539	1843	0548	1830	0552	1806	0557	1743	0609	1730	0626	1735
← 18	0539	1842	0548	1829	0552	1806	0557	1743	0609	1730	0626	1736
← 19	0540	1842	0548	1829	0552	1805	0557	1742	0610	1730	0627	1736
← 20	0540	1842	0548	1828	0553	1804	0558	1741	0610	1730	0627	1737
← 21	0540	1842	0548	1827	0553	1803	0558	1741	0611	1730	0628	1737
← 22	0541	1842	0549	1827	0553	1802	0558	1740	0611	1730	0628	1738
← 23	0541	1841	0549	1826	0553	1801	0559	1740	0612	1730	0629	1738
← 24	0541	1841	0549	1825	0553	1801	0559	1739	0613	1730	0629	1739
← 25	0542	1841	0549	1825	0553	1800	0559	1738	0613	1730	0630	1739
← 26	0542	1841	0549	1824	0553	1759	0559	1738	0614	1730	0630	1740
← 27	0542	1840	0550	1823	0553	1758	0600	1737	0614	1730	0631	1740
← 28	0543	1840	0550	1822	0554	1757	0600	1737	0615	1730	0631	1741
← 29	0543	1840	0550	1822	0554	1757	0600	1736	0615	1730	0632	1741
← 30	0543	1839	0550	1821	0554	1756	0601	1736	0616	1730	0632	1742
← 31	0543	1839	0550	1820			0601	1735			0632	1743

## ENR 4 Radio Navigation Aids/Systems

### ENR 4.1 RADIO NAVIGATION AIDS – EN-ROUTE

Name of station (VOR/VAR)	ID	Frequency (CH)	Hours of operation	Coordinates	ELEV DME antenna	Remarks
1	2	3	4	5	6	7
ANISAKAN NDB	AS	345 kHz	HO	215715.67N 0962409.39E		Coverage: 50 NM
ANN NDB	AN	385 kHz	HO	194612.03N 0940145.77E		Coverage: 80 NM
BAGAN NDB	BGN	335 kHz	HO	211035.50N 0945543.30E		Coverage 100 NM
BAGAN DVOR/DME	BGN	114.9 MHz (CH 96X)	HO	211010.33N 0945541.35E	Nil	Coverage 70 NM
BANMAW NDB	BM	320 kHz	HO	241609.58N 0971454.59E		Coverage: 50 NM
DAWEI DVOR/DME	DWI	112 MHz (CH 57X)	H24	140602.02N 0981224.49E	98 FT	Coverage: 180 NM
DAWEI NDB	DWI	310 kHz	HO	140558.61N 0981201.66E		Coverage: 60 NM
HEHO DVOR/DME	HHO	113.2 MHz (CH 79X)	HO	204452.90N 0964723.74E	Nil	Coverage: 70 NM
HEHO NDB	HH	360 kHz	HO	204434.01N 0964744.62E		Coverage: 60 NM
HOMMALINN NDB	HL	255 kHz	HO	245342.10N 0945447.54E		Coverage: 50 NM
HPA-AN NDB	PA	365 kHz	HO	165331.62N 0974030.48E		Coverage: 50 NM
KALAY NDB	KL	225 kHz	HO	231119.19N 0940342.00E		Coverage 50 NM
KANTI NDB	KI	230 kHz	HO	255925.82N 0954042.23E		Coverage: 50 NM
KAWTHOUNG NDB	KT	290 kHz	HO	100300.03N 0983224.25E		Coverage: 50 NM
KENGTUNG NDB	KG	400 kHz	HO	211809.84N 0993750.01E		Coverage: 50 NM
KENG TUNG DVOR/DME	KTG	115.6 MHz (CH 103X)	HO	211823.34N 0993748.00E	2736 FT	Coverage: 50 NM
KYAUKPYU NDB	KP	250 kHz	HO	192545.10N 0933211.90E		Coverage 50 NM
LASHIO NDB	LSO	370 kHz	HO	225839.46N 0974519.43E		Coverage: 50 NM
LASHIO DVOR/DME	LSO	116.8 MHz (CH 115X)	H24	225851.47N 0974515.19E	2545 FT	Coverage: 100 NM
LOIKAW NDB	LK	295 kHz	HO	194125.64N 0971247.79E		Coverage: 50 NM
MAGWAY NDB	MW	305 kHz	HO	200940.26N 0945829.04E		Coverage 100 NM
MANDALAY INTERNATIONAL VOR/DME	MIA	116.3 MHz (CH 110X)	HO	214241.72N 0955845.20E	Nil	Coverage 100 NM
MANDALAY INTERNATIONAL VOR/DME	MDY	112.8 MHz (CH 75X)	H24	215603.40N 0960747.10E	252 FT	Coverage: 100 NM
MANDALAY INTERNATIONAL NDB	MIA	259 kHz	HO	214117.33N 0955912.69E		Coverage 50 NM
MAWLAMYINE NDB	MM	330 kHz	HO	162635.95N 0973927.83E		Coverage: 50 NM
MONG-HSAT NDB	MS	312 kHz	HO	203101.37N 0991525.61E		Coverage: 50 NM
MONYWAR NDB	MY	570 kHz	HO	221308.83N 0950540.49E		Coverage: 60NM
MYEIK NDB	ME	300 kHz	HO	122700.24N 0983710.87E		Coverage: 50 NM
MYITKYINA DVOR/DME	MKN	115.7 MHz (CH 104X)	HO	252315.56N 0972130.76E	Nil	Coverage: 50 NM
MYITKYINA/NAMPONG NDB	MKA	410 kHz	HO	252102.50N 0971646.20E		Coverage: 50 NM
MYITKYINA/PAMTI NDB	MK	275 kHz	HO	252301.14N 0972125.44E		Coverage: 50 NM
NAMSANG NDB	NS	240 kHz	HO	205309.80N 0974358.00E		Coverage 80NM

<i>Name of station (VOR/VAR)</i>	<i>ID</i>	<i>Frequency (CH)</i>	<i>Hours of operation</i>	<i>Coordinates</i>	<i>ELEV DME antenna</i>	<i>Remarks</i>
1	2	3	4	5	6	7
NAYPYITAW INTERNATIONAL DVOR/DME	NPT	113.7 MHz (CH 84X)	H24	193735.60N 0961144.10E	Nil	Coverage: 100 NM
NAYPYITAW INTERNATIONAL NDB	NT	390 kHz	H24	193757.19N 0961204.04E		Coverage: 80 NM
PATHEIN VOR/DME	PTN	115.6 MHz (CH 103X)	H24	164831.28N 0944610.38E	37 FT	Coverage: 180 NM
PATHEIN NDB	PTN	415 kHz	HO	164847.16N 0944646.90E		Coverage: 50 NM
PUTAO NDB	PT	340 kHz	HO	271933.78N 0972526.96E		Coverage 80 NM
SITTWE DVOR/DME	STW	115.3 MHz (CH 100X)	HO	200758.81N 0925243.05E	Nil	Coverage: 70 NM
TACHILEIK NDB	TL	375 kHz	HO	202858.33N 0995603.98E		Coverage: 50 NM
TACHILEIK DVOR/DME	TCL	114.5 MHz (CH 92X)	HO	202901.11N 0995607.75E	426 M	Coverage: 50 NM
TAUNGOO NDB	TGO	315 kHz	HO	190028.56N 0962404.27E		Coverage: 50 NM
TAUNGOO VOR/DME	TGU	115.1 MHz (CH 98X)	HO	190321.58N 0962404.62E	183 FT	Coverage: 58 NM
THANDWE DVOR/DME	TDE	113 MHz (CH 77X)	HO	182724.17N 0941744.75E	Nil	Coverage: 70 NM
THANDWE NDB	TD	270 kHz	HO	182718.07N 0941803.76E		Coverage: 50 NM
YANGON NDB	MDS	397 kHz	H24	165205.78N 0960621.54E		1.5 NM from THR 03 Coverage: 50 NM
YANGON DVOR/DME	HGU	112.3 MHz (CH 70X)	H24	170449.87N 0961502.49E	49 FT	12 NM from THR 21 Coverage: 130 NM
YANGON DVOR/DME	BGO	112.6 MHz (CH 73X)	H24	171906.58N 0963111.55E	38 FT	Coverage: 180 NM

- a. All drivers and other personnel authorised to operate on the movement area are must be properly trained and familiarized with the airport layout.
- b. Non-essential vehicles and personnel shall not be allowed to access the manoeuvring area.
- c. Essential vehicles permitted to enter the manoeuvring area must be equipped with RT, shall be kept to a minimum number and shall be driven at low speed.
- d. All aircraft shall be guided by Follow Me vehicles as follows :  
Taxiing-in - After leaving the active RWY to the parking position.  
Taxiing-out - From the push-back (engine start) position to the RWY entering TWY.
- e. A record is maintained by airlines concerning persons and vehicles deployed on the manoeuvring area on daily basis.

## VYYY AD 2.23 ADDITIONAL INFORMATION

### 1 Bird concentration in the vicinity of the airport

- Migratory birds appear in sizable numbers throughout the year.
- Observed bird concentration in the vicinity of the airport mainly at sunrise and sunset, at low altitude (at to 500')
- Highly recommendable the usage of landing light at all times.

### 2 Geographical Coordinates of Fixed Gates(loading bridges)

Fixed Gate Stand		Aircraft Type Available	Coordinates
Terminal 1	3	A321, B737 - 700/800/900, E190 - 170	165414.92N 0960806.76E
		A319, A320, E190, E170, B737 - 300/400	165414.75N 0960806.39E
	4	A321, B737 - 700/800/900, E190 - 170	165413.49N 0960805.64E
		B737 - 300/400, A319, A320	165413.46N 0960805.69E
	5	A321, B737 - 700/800/900, E190 - 170	165412.33N 0960804.85E
		B737 - 300/400, A319, A320	165412.29N 0960804.91E
	6	B777 - 300ER, A340 - 600	165410.71N 0960803.88E
		B747 - 400, B777 - 200LR, A350 - 900, A340 - 300/500, B767 - 300/400	165410.64N 0960803.99E
		B787 - 8, B767 - 200, A330, A300 - 600	165410.58N 0960804.09E
		B757 - 200, A310, A321	165410.53N 0960804.17E
		B737 - 300/400/700/800/900, A319, A320, E170/190	165410.48N 0960804.24E
		ATR42, ATR72	165410.42N 0960804.34E
	7	B777 - 300ER, A340 - 600	165408.73N 0960803.88E
		B747 - 400, B777 - 200LR, A350 - 900, A340 - 300/500, B767 - 300/400	165408.66N 0960802.66E
		B787 - 8, B767 - 200, A330, A300 - 600	165408.60N 0960802.76E
		B757 - 200, A310, A321	165408.54N 0960802.84E
		B737 - 300/400/700/800/900, A319, A320, E170/190	165408.50N 0960802.91E
		ATR42, ATR72	165408.44N 0960803.01E

Fixed Gate Stand		Aircraft Type Available	Coordinates
Terminal 2	8	A340 - 600	165405.94N 0960801.59E
		B777 - 300	165406.00N 0960801.52E
		A330 - 200, 300/A340 - 300/B747 - 400/B757 - 300/B777 - 200	165406.05N 0960801.42E
		A300/B757 - 200	165406.09N 0960801.34E
		B767 - 300	165406.14N 0960801.28E
		B737 - 400, 800/B767 - 200	165406.22N 0960801.14E
		A310/A318/A319/A320	165406.25N 0960801.10E
	9	A300 - 200, 300/A340 - 300/B777 - 200, 300	165404.11N 0960800.15E
		B757 - 200, 300	165404.16N 0960800.06E
		A300/B767 - 300	165404.20N 0960759.99E
		B737 - 400, 800/B767 - 200	165404.28N 0960759.86E
		A310/A318/A319/A320	165404.30N 0960759.83E
	10	A340 - 600/B777 - 300	165402.09N 0960759.01E
		A330 - 200/A340 - 300/B777 - 200	165402.20N 0960759.83E
		B757 - 200, 300	165402.23N 0960758.78E
		A300/B767 - 300	165402.27N 0960758.71E
		B737 - 400, 800/B767 - 200	165402.35N 0960758.59E
		A310/A318/A319/A320	165402.38N 0960758.55E
	11	A340 - 600/B777 - 300	165400.11N 0960757.67E
		A300 - 200/A340 - 300/B747 - 400/B757 - 300/B777 - 200	165400.22N 0960757.51E
		A300/B757 - 200	165400.24N 0960757.47E
		B767 - 300	165400.30N 0960757.37E
		B737 - 400, 800/B767 - 200	165400.38N 0960757.25E
		A310/A318/A319/A320	165400.40N 0960757.22E
Terminal 3	15	B737 - 800, ER190	165357.49N 0960753.22E
		ERJ145	165357.48N 0960752.78E
		CRJ200	165357.46N 0960752.73E

## VYYY AD 2.24 CHARTS RELATED TO AN AERODROME

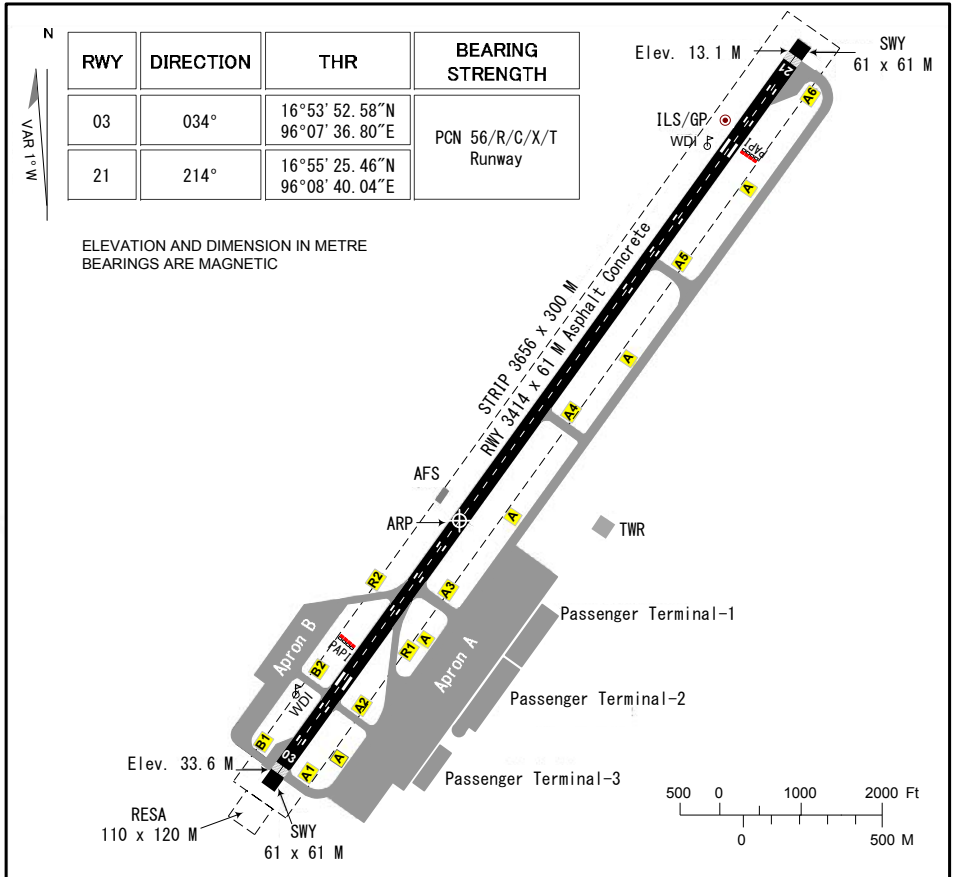
VFR ARRIVING AND DEPARTING PROCEDURE .....	<a href="#">AD 2.VYYY-VFRPROC</a>
AERODROME CHART - ICAO .....	<a href="#">AD 2.VYYY-ADC</a>
AIRCRAFT PARKING LAYOUT AND SAFEDOCK SYSTEM .....	<a href="#">AD 2.VYYY-LAYOUT</a>
← INSTRUMENT APPROACH CHART - ICAO - RWY21 - VOR/DME21 .....	<a href="#">AD 2.VYYY-VOR/DME21</a>
INSTRUMENT APPROACH CHART - ICAO - RWY03 - NDB/DME03 .....	<a href="#">AD 2.VYYY-NDB/DME03</a>
AREA CHART - ICAO .....	<a href="#">AD 2.VYYY-TMA</a>
INSTRUMENT APPROACH CHART - ICAO - RWY21 - ILSY/DME21 .....	<a href="#">AD 2.VYYY-ILSY/DME21</a>

AERODROME CHART - ICAO

16°54' 26.16"N  
96°07' 59.66"E  
AD ELEV 33.6 M

TWR 118.1

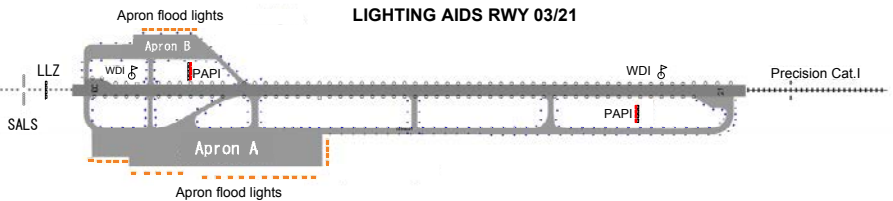
YANGON/Mingaladon(VYYY)



MARKING AIDS RWY 03/21



LIGHTING AIDS RWY 03/21



*PAGE INTENTIONALLY LEFT BLANK*



**VYBG AD 2.17 AIR TRAFFIC SERVICES AIRSPACE**

Name		Unit providing service	Call sign Languages Area and conditions of use Hours of service	Transition altitude	Remarks
Lateral limits	Vertical limits				
Class of airspace					
1	2	3	4	5	
<b>NYAUNG U ATZ</b> Circle: radius 10 NM, centred at 211044.28N 0945549.27E ARP C		BAGAN TOWER	NYAUNG U TOWER: EN HO	8000 FT	Nil
<b>NYAUNG U CTR</b> Circle: radius 30 NM, centred at 211044.28N 0945549.27E ARP B		BAGAN APPROACH CONTROL OFFICE	NYAUNG U APPROACH: EN HO	8000 FT	Nil

**VYBG AD 2.18 ATS COMMUNICATION FACILITIES**

Service designation	Call sign	Channel	Hours of operation	Remarks
1	2	3	4	5
BAGAN APPROACH CONTROL OFFICE	NYAUNG U APPROACH: EN	119.700 MHz	HO	Nil
BAGAN TOWER	NYAUNG U TOWER: EN	118.700 MHz	HO	Nil

**VYBG AD 2.19 RADIO NAVIGATION AND LANDING AIDS**

Type of aid CAT of ILS/MLS (MAG VAR)	ID	Frequency	Hours of operation	Transmitting antenna coordinates	Elevation of DME transmitting antenna	Remarks
1	2	3	4	5	6	7
DVOR/DME	BGN	114.9 MHz CH 96X	HO	211010.33N 0945541.35E	64 M	Coverage 70 NM Em: A9WNON
NDB	BGN	335 kHz	HO	211035.50N 0945543.30E	Not applicable	Coverage 100 NM Em: NON/A2A

**VYBG AD 2.20 LOCAL TRAFFIC REGULATIONS****1 AIRPORT REGULATIONS**

Nyaung U Airport complies MCAR Part 139, Section 2 Aerodrome Standards. This aerodrome standard include the following:

- a. Physical Characteristic
- b. Obstacle Restriction and Removal
- c. Visual Aids for Navigation
- d. Visual Aids for Denoting Obstacles
- e. Visual Aids for Denoting Restricted Use Areas
- f. Electrical System
- g. Aerodrome Operational Services, Equipment and Installation
- h. Aerodrome Maintenance

---

## 2 TAXIING TO AND FROM STANDS

Arriving aircraft will be allocated a stand number by the TWR

### VYBG AD 2.24 CHARTS RELATED TO AN AERODROME

Aerodrome Chart - ICAO .....	<a href="#">AD 2.VYBG-ADC</a>
Instrument Approach Chart - ICAO - RWY18 - VOR/DME18 .....	<a href="#">AD 2.VYBG-VOR/DME18</a>
Instrument Approach Chart - ICAO - RWY36 - VOR/DME36 .....	<a href="#">AD 2.VYBG-VOR/DME36</a>
Instrument Approach Chart - ICAO - RWY18 - NDB18 .....	<a href="#">AD 2.VYBG-NDB18</a>
Instrument Approach Chart - ICAO - RWY36 - NDB36 .....	<a href="#">AD 2.VYBG-NDB36</a>

**VYDW AD 2.17 AIR TRAFFIC SERVICES AIRSPACE**

Name		Unit providing service	Call sign Languages Area and conditions of use Hours of service	Transition altitude	Remarks
Lateral limits	Vertical limits				
Class of airspace					
1	2	3	4	5	
<b>DAWEI ATZ</b> Circle: radius 5 NM, centred at 140550.55N 0981224.18E ARP C		DAWEI TOWER	DAWEI TOWER: EN HO	6000 FT	Nil
1500 FT AMSL GND					
<b>DAWEI CTR</b> Circle: radius 30 NM, centred at 140550.55N 0981224.18E ARP C		DAWEI APPROACH CONTROL	DAWEI APP: EN HO	6000 FT	Nil
FL 130 STD GND					

**VYDW AD 2.18 ATS COMMUNICATION FACILITIES**

Service designation	Call sign	Channel	Hours of operation	Remarks
1	2	3	4	5
DAWEI APPROACH CONTROL	DAWEI APP: EN	119.700 MHz	HO	Nil
DAWEI TOWER	DAWEI TOWER: EN	118.700 MHz	HO	Nil

**VYDW AD 2.19 RADIO NAVIGATION AND LANDING AIDS**

Type of aid CAT of ILS/MLS (MAG VAR)	ID	Frequency	Hours of operation	Transmitting antenna coordinates	Elevation of DME transmitting antenna	Remarks
1	2	3	4	5	6	7
NDB	DWI	310 kHz	HO	140558.61N 0981201.67E	Not applicable	Coverage: 60 NM Em: NON/A2A
DVOR/DME	DWI	CH 57X 112 MHz	H24	140602.02N 0981224.49E	98 FT	Coverage: 180 NM Em:

**VYDW AD 2.20 LOCAL TRAFFIC REGULATIONS****1 AIRPORT REGULATIONS**

Daewei Airport complies MCAR Part 139, Section 2 Aerodrome Standards. This aerodrome standard include the following:

- a. Physical Characteristic
- b. Obstacle Restriction and Removal
- c. Visual Aids for Navigation
- d. Visual Aids for Denoting Obstacles
- e. Visual Aids for Denoting Restricted Use Areas
- f. Electrical System
- g. Aerodrome Operational Services, Equipment and Installation
- h. Aerodrome Maintenance

---

## 2 TAXIING TO AND FROM STANDS

Arriving aircraft will be allocated a stand number by the TWR.

### VYDW AD 2.24 CHARTS RELATED TO AN AERODROME

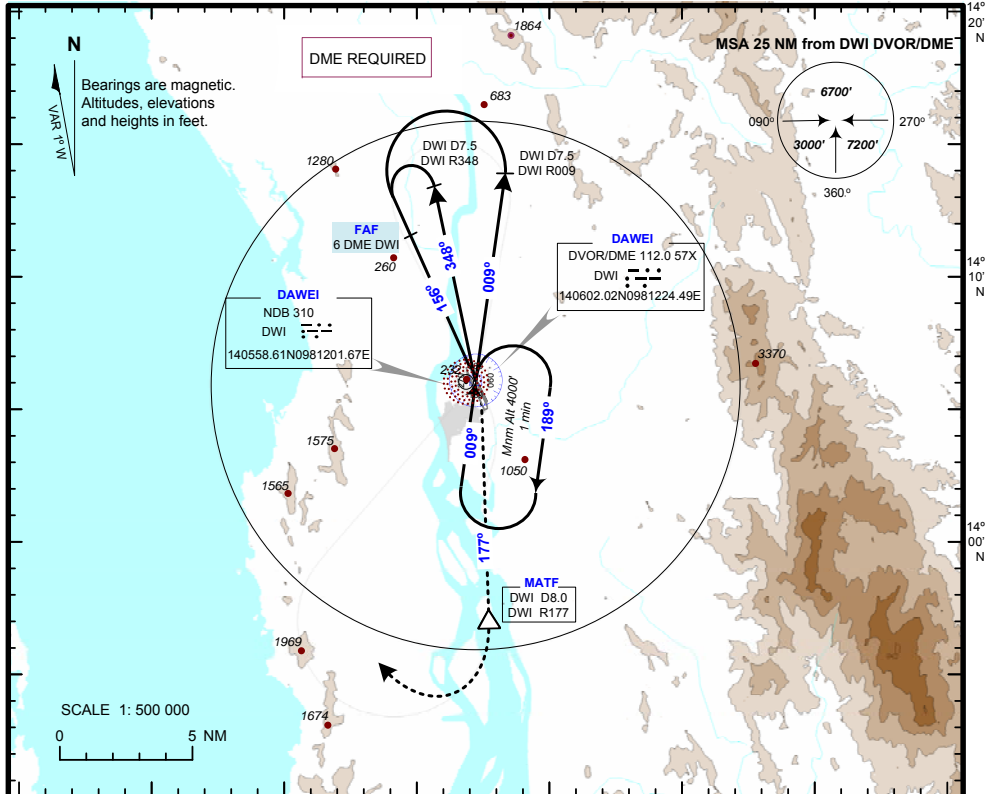
Aerodrome Chart - ICAO .....	<a href="#">AD 2.VYDW-ADC</a>
Instrument Approach Chart - ICAO - RWY16 - VOR/DME16 .....	<a href="#">AD 2.VYDW-VOR/DME16</a>
Instrument Approach Chart - ICAO - RWY16 - NDB .....	<a href="#">VYDW AD 2-13</a>

INSTRUMENT  
APPROACH  
CHART - ICAO

AERODROME ELEV - 84 ft  
HEIGHTS RELATED TO THR ELEV - 73 ft  
14°05'50.55"N 098°12'24.18"E

TWR 118.7  
APP 119.7

DAWEI (VYDW)  
VOR/DME  
RWY 16



**MISSED APPROACH**  
Climb on R177 via DWI to DWI D8 then turn right to join holding pattern at 4000' or as instructed by ATC.  
THR ELEV 73 ft

	OCA (OCH)			
	A	B	C	
Category of aircraft				
Straight - in (CG 2.5%)	1030(957)			
Straight - in (CG 4%)	600(527)			
Circling	820(747)		1350(1277)	
Distance	3 DME	4 DME	5 DME	6 DME
Altitude	890	1210	1530	1850
Speed (knots)	70	90	120	150
FAF-MAPt 6 NM (min:sec)	5:09	4:00	3:00	2:24
Rate of Descend (ft/min)	370	480	640	800
			800	960

*PAGE INTENTIONALLY LEFT BLANK*

## VYHH — HEHO

*Note: The following sections in this chapter are intentionally left blank:  
AD 2.16, AD 2.21, AD 2.22, AD 2.23.*

### VYHH AD 2.1 AERODROME LOCATION INDICATOR AND NAME

VYHH — HEHO

### VYHH AD 2.2 AERODROME GEOGRAPHICAL AND ADMINISTRATIVE DATA

1	<b>ARP coordinates and site at AD</b>	204449.36N 0964731.28E
2	<b>Direction and distance from city</b>	3.7 KM North West of Heho town
3	<b>Elevation/Reference temperature</b>	1199.4 M (3935 FT)/31.1 °C
4	<b>Geoid undulation at ARP</b>	-38 M
5	<b>MAG VAR/Annual change</b>	1 ° W (1956)/annual change negligible
6	<b>AD Administration, address, telephone, telefax, telex, AFS</b>	DEPARTMENT OF CIVIL AVIATION Post: Heho airport SHAN STATE MYANMAR Tel: 95 81 63032 AFTN: VYHHYDYX
7	<b>Types of traffic permitted (IFR/VFR)</b>	IFR/VFR
8	<b>Remarks</b>	Nil

### VYHH AD 2.3 OPERATIONAL HOURS

1	<b>AD Administration</b>	HO
2	<b>Customs and immigration</b>	HS
3	<b>Health and sanitation</b>	Health: Nil Sanitation: Nil
4	<b>AIS Briefing Office</b>	Nil
5	<b>ATS Reporting Office (ARO)</b>	Nil
6	<b>MET Briefing Office</b>	Nil
7	<b>ATS</b>	HO
8	<b>Fuelling</b>	Nil
9	<b>Handling</b>	Nil
10	<b>Security</b>	Nil
11	<b>De-icing</b>	Nil
12	<b>Remarks</b>	Nil

### VYHH AD 2.4 HANDLING SERVICES AND FACILITIES

1	<b>Cargo-handling facilities</b>	Baggage Trolley or Carts
---	----------------------------------	--------------------------

2	<b>Fuel/oil types</b>	Fuel: JP1 Oil: Nil
3	<b>Fuelling facilities/capacity</b>	Nil 44000 gals
4	<b>De-icing facilities</b>	Nil
5	<b>Hangar space for visiting aircraft</b>	Nil
6	<b>Repair facilities for visiting aircraft</b>	Nil
7	<b>Remarks</b>	Nil

### VYHH AD 2.5 PASSENGER FACILITIES

1	<b>Hotels</b>	Nil
2	<b>Restaurants</b>	Available at airport
3	<b>Transportation</b>	Taxi service
4	<b>Medical facilities</b>	First Aid
5	<b>Bank and Post Office</b>	Bank: Three Money Changers and Two ATM Post: Available at Arrival Hall
6	<b>Tourist Office</b>	Nil
7	<b>Remarks</b>	Nil

### VYHH AD 2.6 RESCUE AND FIRE FIGHTING SERVICES

1	<b>AD category for fire fighting</b>	CAT 5
2	<b>Rescue equipment</b>	CAT 5
3	<b>Capability for removal of disabled aircraft</b>	Nil
4	<b>Remarks</b>	Nil

### VYHH AD 2.7 SEASONAL AVAILABILITY — CLEARING

There is no requirement for clearing as the aerodrome is available throughout the year.

### VYHH AD 2.8 APRONS, TAXIWAYS AND CHECK LOCATIONS DATA

1	<b>Apron surface and strength and area</b>	Surface: Bitumen Strength: 68,039 kg Area: 427 M x 69 M
2	<b>Taxiway width, surface and strength</b>	Nil
3	<b>ACL location and elevation</b>	Nil
4	<b>VOR checkpoints</b>	Nil
5	<b>INS checkpoints</b>	Nil
6	<b>Remarks</b>	Nil



Lateral limits	Name		Unit providing service	Call sign Languages Area and conditions of use Hours of service	Transition altitude	Remarks
	Vertical limits	Class of airspace				
1	2	3	4	5		
HEHO CTR Circle: radius 35 NM, centred at 204449.36N 0964731.28E ARP  C	FL 130 STD GND		HEHO APPROACH CONTROL	HEHO APPROACH: EN HO	11000 FT	Nil

**VYHH AD 2.18 ATS COMMUNICATION FACILITIES**

Service designation	Call sign	Channel	Hours of operation	Remarks
1	2	3	4	5
HEHO APPROACH CONTROL	HEHO APPROACH: EN	119.700 MHz	HO	Nil
HEHO TOWER	HEHO TOWER: EN	118.100 MHz	HO	Nil

**VYHH AD 2.19 RADIO NAVIGATION AND LANDING AIDS**

Type of aid CAT of ILS/MLS (MAG VAR)	ID	Frequency	Hours of operation	Transmitting antenna coordinates	Elevation of DME transmitting antenna	Remarks
1	2	3	4	5	6	7
NDB	HH	360 kHz	HO	204434.01N 0964744.62E	Not applicable	Coverage: 60 NM Em: NON/A2A
DVOR/DME	HHO	113.2 MHz CH 79X	HO	204452.90N 0964723.74E	Not applicable	Coverage: 70 NM Em: A9WN0N

**VYHH AD 2.20 LOCAL TRAFFIC REGULATION**

**1 AIRPORT REGULATIONS**

Heho Airport complies MCAR Part 139, Section 2 Aerodrome Standards. This aerodrome standard include the following:

- a. Physical Characteristic
- b. Obstacle Restriction and Removal
- c. Visual Aids for Navigation
- d. Visual Aids for Denoting Obstacles
- e. Visual Aids for Denoting Restricted Use Areas
- f. Electrical System
- g. Aerodrome Operational Services, Equipment and Installation
- h. Aerodrome Maintenance

**2 TAXIING TO AND FROM STANDS**

Arriving aircraft will be allocated a stand number by the TWR.

**VYHH AD 2.24 CHARTS RELATED TO AN AERODROME**

- Aerodrome Chart - ICAO ..... [AD 2.VYHH-ADC](#)
- Instrument Approach Chart - ICAO - RWY36 - VOR/DME36 ..... [AD 2.VYHH-VOR/DME36](#)
- Instrument Approach Chart - ICAO - RWY36 - NDB ..... [VYHH AD 2-9](#)

*PAGE INTENTIONALLY LEFT BLANK*

**VYMK — MYITKYINA**

*Note: The following sections in this chapter are intentionally left blank:  
AD 2.16, AD 2.21, AD 2.22, AD 2.23.*

**VYMK AD 2.1 AERODROME LOCATION INDICATOR AND NAME**

VYMK — MYITKYINA

**VYMK AD 2.2 AERODROME GEOGRAPHICAL AND ADMINISTRATIVE DATA**

1	<b>ARP coordinates and site at AD</b>	252258.04N 0972109.60E
2	<b>Direction and distance from city</b>	4 KM West of town
3	<b>Elevation/Reference temperature</b>	147.5 M (483.9 FT)/Nil
4	<b>Geoid undulation at ARP</b>	-43 M
5	<b>MAG VAR/Annual change</b>	1° W (1956)/annual change negligible
6	<b>AD Administration, address, telephone, telefax, telex, AFS</b>	DEPARTMENT OF CIVIL AVIATION Post: Myitkyina airport MYITKYINA KACHIN STATE MYANMAR Tel: 95 74 2526354 - 95 74 2526042 AFTN: VYMKYDYX
7	<b>Types of traffic permitted (IFR/VFR)</b>	IFR/VFR
8	<b>Remarks</b>	Nil

**VYMK AD 2.3 OPERATIONAL HOURS**

1	<b>AD Administration</b>	HO
2	<b>Customs and immigration</b>	HS
3	<b>Health and sanitation</b>	Health: Nil Sanitation: Nil
4	<b>AIS Briefing Office</b>	Nil
5	<b>ATS Reporting Office (ARO)</b>	Nil
6	<b>MET Briefing Office</b>	Nil
7	<b>ATS</b>	HO
8	<b>Fuelling</b>	
9	<b>Handling</b>	HO
10	<b>Security</b>	
11	<b>De-icing</b>	Nil
12	<b>Remarks</b>	Nil

**VYMK AD 2.4 HANDLING SERVICES AND FACILITIES**

1	<b>Cargo-handling facilities</b>	Baggage Trolleys / Carts
---	----------------------------------	--------------------------

2	<b>Fuel/oil types</b>	Fuel: JET, A1 Oil: Nil
3	<b>Fuelling facilities/capacity</b>	Nil 3360 gals
4	<b>De-icing facilities</b>	Nil
5	<b>Hangar space for visiting aircraft</b>	Nil
6	<b>Repair facilities for visiting aircraft</b>	Nil
7	<b>Remarks</b>	Nil

### VYMK AD 2.5 PASSENGER FACILITIES

1	<b>Hotels</b>	Nil
2	<b>Restaurants</b>	Available in airport compound
3	<b>Transportation</b>	Taxi and bus services available
4	<b>Medical facilities</b>	Nil
5	<b>Bank and Post Office</b>	Bank: Nil Post: Nil
6	<b>Tourist Office</b>	Nil
7	<b>Remarks</b>	Nil

### VYMK AD 2.6 RESCUE AND FIRE FIGHTING SERVICES

1	<b>AD category for fire fighting</b>	CAT 3
2	<b>Rescue equipment</b>	CAT 3
3	<b>Capability for removal of disabled aircraft</b>	TBN
4	<b>Remarks</b>	Nil

### VYMK AD 2.7 SEASONAL AVAILABILITY — CLEARING

There is no requirement for clearing as the aerodrome is available throughout the year.

### VYMK AD 2.8 APRONS, TAXIWAYS AND CHECK LOCATIONS DATA

1	<b>Apron surface and strength</b>	Surface: Asphalt Concrete Strength: 33,112 KG Area: 183 M x 55 M
2	<b>Taxiway width, surface and strength</b>	Nil
3	<b>ACL location and elevation</b>	Nil
4	<b>VOR checkpoints</b>	Nil
5	<b>INS checkpoints</b>	Nil
6	<b>Remarks</b>	Nil

## VYNT — NAYPYITAW INTERNATIONAL

*Note: The following sections in this chapter are intentionally left blank:  
AD 2.16, AD 2.23.*

### VYNT AD 2.1 AERODROME LOCATION INDICATOR AND NAME

VYNT — NAYPYITAW INTERNATIONAL

### VYNT AD 2.2 AERODROME GEOGRAPHICAL AND ADMINISTRATIVE DATA

1	<b>ARP coordinates and site at AD</b>	193724.78N 0961203.60E
2	<b>Direction and distance from city</b>	20 KM South of Naypyitaw Capital City
3	<b>Elevation/Reference temperature</b>	89.9 M (295 FT)/33.4°C
4	<b>Geoid undulation at ARP</b>	-41 M
5	<b>MAG VAR/Annual change</b>	1° W (1956)/annual change negligible
6	<b>AD Administration, address, telephone, telefax, telex, AFS</b>	PIONEER AERODROME SERVICES CO., LTD Post: Naypyitaw International Airport NAYPYITAW CAPITAL CITY Tel: 067 8109111-067 8109015 Ext 3115, 3116 Fax: 067 8109033 AFTN: VYNTYDYX
7	<b>Types of traffic permitted (IFR/VFR)</b>	IFR/VFR
8	<b>Remarks</b>	Nil

### VYNT AD 2.3 OPERATIONAL HOURS

1	<b>AD Administration</b>	H24
2	<b>Customs and immigration</b>	H24
3	<b>Health and sanitation</b>	Health: H24 Sanitation: H24
4	<b>AIS Briefing Office</b>	Nil
5	<b>ATS Reporting Office (ARO)</b>	H24
6	<b>MET Briefing Office</b>	
7	<b>ATS</b>	H24
8	<b>Fuelling</b>	H24
9	<b>Handling</b>	H24
10	<b>Security</b>	H24
11	<b>De-icing</b>	(Not practicable)
12	<b>Remarks</b>	Nil

### VYNT AD 2.4 HANDLING SERVICES AND FACILITIES

1	<b>Cargo-handling facilities</b>	Baggage Trolleys/Carts, GPU(140KVA/180KVA), Air Start Unit, Container Pallet Loader Aero Bus 6200, B747 Tow Bar, 2 Universal Tow Bar, Follow me, A/C Towing Tractor, Baggage Towing Tractor and Lavatory Service Vehicle, Main Deck Loader.
2	<b>Fuel/oil types</b>	Fuel: JET, A1 Oil: Nil
3	<b>Fuelling facilities/capacity</b>	Available Boxer 3500 Gals and Hydrant Dispenser (Fuelling maximum 1000 Litre/minute), 80000 IG Tank 3 Nos. Nil
4	<b>De-icing facilities</b>	Nil
5	<b>Hangar space for visiting aircraft</b>	Nil
6	<b>Repair facilities for visiting aircraft</b>	Nil
7	<b>Remarks</b>	Nil

### VYNT AD 2.5 PASSENGER FACILITIES

1	<b>Hotels</b>	2 Nos of Airport Hotels in City: (1) Horizon lake View Resort (28 km from Airport and 40 Double Rooms) (2) Myat Taw Win (26km from Airport and 80 Double Rooms)
2	<b>Restaurants</b>	Available at airport compound
3	<b>Transportation</b>	Taxi, Car Rental and Tour Arrangement services available at airport.
4	<b>Medical facilities</b>	Only Ambulance Services (Hospital available in city)
5	<b>Bank and Post Office</b>	Bank: Available in city Post: Available in city
6	<b>Tourist Office</b>	Tourist Information Available at Airport
7	<b>Remarks</b>	Int'l CIP Lounge Service, Retail Service, Telecommunication Service, ATM and Money Changer Available at Airport.

### VYNT AD 2.6 RESCUE AND FIRE FIGHTING SERVICES

1	<b>AD category for fire fighting</b>	CAT 9
2	<b>Rescue equipment</b>	CAT 9
3	<b>Capability for removal of disabled aircraft</b>	2 Cranes 50TON, 1 Crane 30TON and several light equipment. Coordinator: Assistant General Manager Ph: +95 678109037 Email: myomin@pioneer aerodrome.aero
4	<b>Remarks</b>	Nil

### VYNT AD 2.7 SEASONAL AVAILABILITY — CLEARING

There is no requirement for clearing as the aerodrome is available throughout the year.

### VYNT AD 2.8 APRONS, TAXIWAYS AND CHECK LOCATIONS DATA

← I	<b>Apron surface and strength</b>	<b>Apron</b>	<b>Area</b>	<b>Composition</b>	<b>Strength</b>
		← A1(contact stand)	57371.2 sq.m	Concrete	50/R/B/W/T
		A2(remote stand)	17155 sq.m	Concrete	50/R/B/W/T

## 6 REMOVAL OF DISABLE FROM RUNWAYS

When an aircraft is wrecked on a runway, it is the duty of the owner or user of such aircraft to have it removed as soon as possible. If a wrecked aircraft is not removed from the runway as quickly as possible by the owner or user, the aircraft will be removed by the aerodrome authority at the owner's or user's expense.

## VYNT AD 2.21 NOISE ABATEMENT PROCEDURES

There are no noise abatement procedures established for Naypyitaw International Airport(NIA).

## VYNT AD 2.22 FLIGHT PROCEDURES

### 1 LOW VISIBILITY PROCEDURE FOR GROUND MOVEMENT CONTROL

Vehicular movement on the manoeuvring area will be restricted to Operations Officers, REFS and vehicles or aircraft escorted by an Operation Officer. Non-essential vehicles are not permitted on the manoeuvring area in low visibility conditions. No vehicle is permitted within 150 m of the runway center line while a take-off or landing is in progress. Other safety considerations include:

- i. Two-way radio communications are to be maintained between the Operations Officer, and
- ii. ATC on the Aerodrome Control Frequency VHF 121.9 MHz during runway visibility assessments.

## VYNT AD 2.24 CHARTS RELATED TO AN AERODROME

AERODROME CHART - ICAO .....	<a href="#">AD 2.VYNT-ADC</a>
INSTRUMENT APPROACH CHART - ICAO - RWY16 - ILS/DME16 .....	<a href="#">AD 2.VYNT-ILS/DME16</a>
INSTRUMENT APPROACH CHART - ICAO - RWY16 - DVOR/DME16 .....	<a href="#">AD 2.VYNT-DVOR/DME16</a>
INSTRUMENT APPROACH CHART - ICAO - RWY34 - DVOR/DME34 .....	<a href="#">AD 2.VYNT-DVOR/DME34</a>
INSTRUMENT APPROACH CHART - ICAO - RWY16 - NDB/DME16 .....	<a href="#">AD 2.VYNT-NDB/DME16</a>
INSTRUMENT APPROACH CHART - ICAO - RWY34 - NDB/DME34 .....	<a href="#">AD 2.VYNT-NDB/DME34</a>

*PAGE INTENTIONALLY LEFT BLANK*

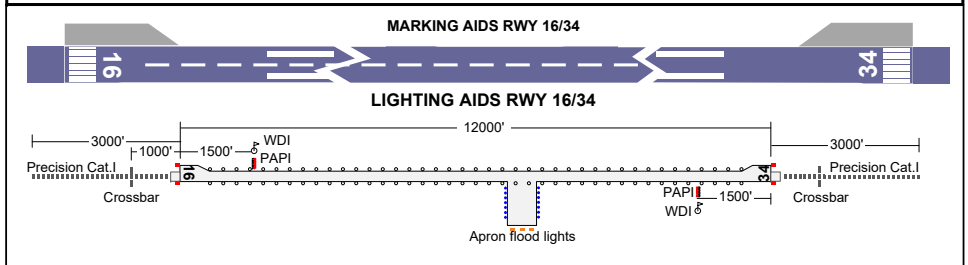
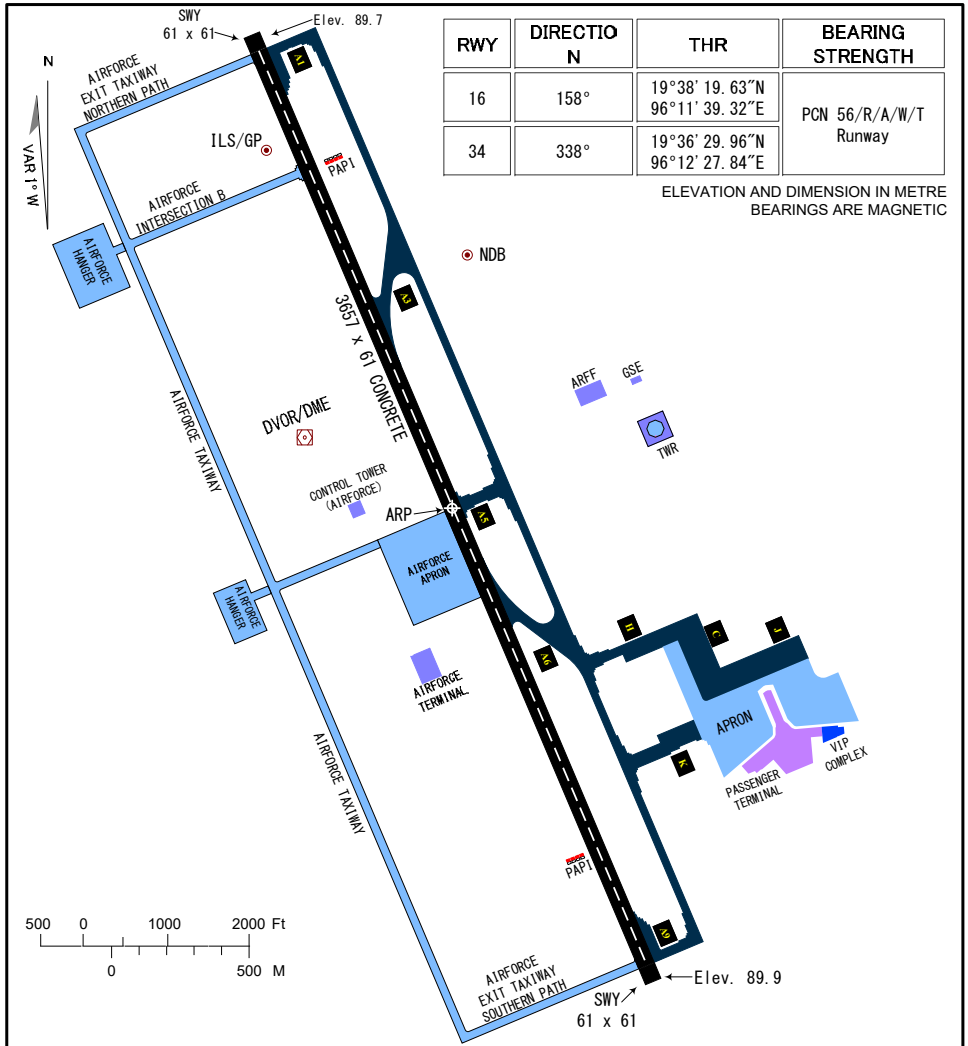


AERODROME CHART - ICAO

19°37' 24.78"N  
96°12' 03.60"E  
AD ELEV 89.9 M

TWR 118.7

NAYPYITAW/  
Naypyitaw



*PAGE INTENTIONALLY LEFT BLANK*

## VYPN AD 2.18 ATS COMMUNICATION FACILITIES

Service designation	Call sign	Channel	Hours of operation	Remarks
1	2	3	4	5
PATHEIN APPROACH CONTROL	PATHEIN APP: EN	119.700 MHz	HO	Nil
PATHEIN TOWER	PATHEIN TWR: EN	118.700 MHz	HO	Nil

## VYPN AD 2.19 RADIO NAVIGATION AND LANDING AIDS

Type of aid CAT of ILS/MLS (MAG VAR)	ID	Frequency	Hours of operation	Transmitting antenna coordinates	Elevation of DME transmitting antenna	Remarks
1	2	3	4	5	6	7
VOR/DME	PTN	115.6 MHz CH 103X	H24	164831.28N 0944610.38E	37 FT	Coverage: 180 NM Em:
NDB	PTN	415 kHz	HO	164847.16N 0944646.90E	Not applicable	Coverage: 50 NM Em: NON/A2A

## VYPN AD 2.20 LOCAL TRAFFIC REGULATIONS

### 1 AIRPORT REGULATIONS

Patheingyi Airport complies MCAR Part 139, Section 2 Aerodrome Standards. This aerodrome standard include the following:

- a. Physical Characteristic
- b. Obstacle Restriction and Removal
- c. Visual Aids for Navigation
- d. Visual Aids for Denoting Obstacles
- e. Visual Aids for Denoting Restricted Use Areas
- f. Electrical System
- g. Aerodrome Operational Services, Equipment and Installation
- h. Aerodrome Maintenance

### 2 TAXIING TO AND FROM STANDS

Arriving aircraft will be allocated a stand number by the TWR.

## VYPN AD 2.24 CHARTS RELATED TO AN AERODROME

AERODROME CHART .....	<a href="#">AD 2.VYPN-ADC</a>
INSTRUMENT APPROACH CHART - ICAO - RWY06 - NDB06 .....	<a href="#">AD 2.VYPN-NDB06</a>
INSTRUMENT APPROACH CHART - ICAO - RWY24 - NDB24 .....	<a href="#">AD 2.VYPN-NDB24</a>
INSTRUMENT APPROACH CHART - ICAO - RWY06 - VOR/DME06 .....	<a href="#">AD 2.VYPN-VOR/DME06</a>
INSTRUMENT APPROACH CHART - ICAO - RWY24 - VOR/DME24 .....	<a href="#">AD 2.VYPN-VOR/DME24</a>

*PAGE INTENTIONALLY LEFT BLANK*

3	<b>Stop bars</b>	Nil
4	<b>Remarks</b>	Nil

## VYPT AD 2.10 AERODROME OBSTACLES

### In Area 2

Designator	Part ID	Type	Coordinates	ELEV	HGT	Marking/LGT type, colour	Remarks
1	2	3	4	5	6	7	8
NOI KUM SAWNG M TOP	Nil	Building	271649.62N 0972258.93E	888M	Nil	LGT	Nil
OBST 11	Nil	Building	271146.18N 0972523.42E	1048M	Nil	LGT	Nil
NOI ZI NAM M TOP	Nil	Building	272356.36N 0972911.19E	739M	Nil	LGT	Nil
OBST 01	Nil	Building	272523.79N 0971923.78E	686M	Nil	LGT	Nil

### In Area 3

Designator	Part ID	Type	Coordinates	ELEV	HGT	Marking/LGT type, colour	Remarks
1	2	3	4	5	6	7	8
Nil							

## VYPT AD 2.11 METEOROLOGICAL INFORMATION PROVIDED

1	<b>Associated MET Office</b>	Nil
---	------------------------------	-----

## VYPT AD 2.12 RUNWAY PHYSICAL CHARACTERISTICS

RWY Designations	TRUE & MAG BRG	Dimensions of RWY	Strength (PCN) and surface of RWY and SWY	THR & RWY end coordinates THR geoid undulation	THR elevation and highest elevation of TDZ of precision APP RWY
1	2	3	4	5	6
RWY35	354.00°	2591 M x 30	60,781 KG	271858.88N 0972540.60E	464.7M
RWY17	174.00°	M	Bitumen	272022.47N 0972529.70E	438.5M

Slope of RWY-SWY	SWY dimensions	CWY dimensions (M)	Strip dimensions	OFZ	Remarks
7	8	9	10	11	12
1.02%	Nil	152 M x 91 M	2804 M x 150 M	Nil	Nil
0.86%, 1.24%	61 M x 30 M	Nil		Nil	Nil

## VYPT AD 2.13 DECLARED DISTANCES

RWY Designator	THR or start of take off run	TORA	TODA	ASDA	LDA	Remarks
1	2	3	4	5	6	7
17	THR	2591 M	2743 M	2652 M	2591 M	Nil
35	THR	2591 M	2591 M	2652 M	2591 M	Nil

## VYPT AD 2.17 AIR TRAFFIC SERVICES AIRSPACE

Name Lateral limits      Vertical limits Class of airspace	Unit providing service	Call sign Languages Area and conditions of use Hours of service	Transition altitude	Remarks
1	2	3	4	5
<b>PUTAO ATZ</b> Circle: radius 5 NM, centred at 271948.09N 0972534.16E ARP C 4000 FT AMSL GND	PUTAO TOWER	PUTAO TOWER: EN HO	17000 FT	Nil
<b>PUTAO CTR</b> Circle: radius 20 NM, centred at 271948.09N 0972534.16E ARP C FL 130 STD GND	PUTAO APPROACH CONTROL OFFICE	PUTAO APPROACH: EN HO	17000 FT	Nil

## VYPT AD 2.18 ATS COMMUNICATION FACILITIES

Service designation	Call sign	Channel	Hours of operation	Remarks
1	2	3	4	5
PUTAO APPROACH CONTROL OFFICE	PUTAO APPROACH: EN	119.700 MHz	HO	Nil
PUTAO TOWER	PUTAO TOWER: EN	118.700 MHz	HO	Nil

## VYPT AD 2.19 RADIO NAVIGATION AND LANDING AIDS

Type of aid CAT of ILS/MLS (MAG VAR)	ID	Frequency	Hours of operation	Transmitting antenna coordinates	Elevation of DME transmitting antenna	Remarks
1	2	3	4	5	6	7
NDB	PT	340 kHz	HO	271933.78N 0972526.96E	Not applicable	Coverage 80 NM Em: NON/A2A

## VYPT AD 2.20 LOCAL TRAFFIC REGULATIONS

### 1 AIRPORT REGULATIONS

Puato Airport complies MCAR Part 139, Section 2 Aerodrome Standards. This aerodrome standard include the following:

- a. Physical Characteristic
- b. Obstacle Restriction and Removal
- c. Visual Aids for Navigation
- d. Visual Aids for Denoting Obstacles
- e. Visual Aids for Denoting Restricted Use Areas
- f. Electrical System
- g. Aerodrome Operational Services, Equipment and Installation
- h. Aerodrome Maintenance