

# **GOVERNMENT REPORT**

# **QUINTANA ROO**

**SEPTEMBER 9TH, 2014**

# Government report

- Every year Governments present a report which express the general condition that keeps their local public administration, so it is considered a Republican exercise where the Government reports to the people the facts and actions taken in the previous year.

# Government report

- This report is conducted in the month of September each year in the State of Quintana Roo.
- With the presence of important guests from different fields such as the political, cultural, artistic, etc.

# Coordination meetings

- There are scheduled meetings with staff of the Government, DGAC, ASA, Mexican Navy and SENEAM to coordinate dates, expected demand, timetables, airport capacity, logistics and security aspects, etc.

# Expected Demand

- According to the latest information received the expected demand will be between 70 and 110 aircraft.
- Approximately 8 Governors and some Ministers are expected.
- The assistance of the President has not been confirmed.

# Weather conditions

## September 8th. 2014,

Cloudy throughout the day, wind: “E” 12 Kts. high probability of rain in the evening with temperatures of 24 to 30° C.

## September 9th. 2014,,

Cloudy throughout the day, wind: “SE” 12kts to 14 Kts. with 90's chance of rain during the day and temperatures from 24 to 30°C.

# Airport MMCM

- 2 positions for commercial aviation, 11 for G.A. and 2 for helicopters.
- 1 taxiway.
- 4 ATC's.
- No night shift.
- 1 frequency for ATC.
- No dispatch office.

# Airport layout





# AAR MMCM

Pista en uso	Tipo de Operaciones	AAR para VMC		AAR para VMC marginal		AAR para IMC	
		Separación entre aeronaves en minutos	Número máximo de aeronaves por hora	Separación entre aeronaves en minutos	Número máximo de aeronaves por hora	Separación entre aeronaves en minutos	Número máximo de aeronaves por hora
10	Solo llegadas	2	31	4	16	5	13
	Solo salidas	3	20	4	16	5	13
	Combinado	----	25	----	11	----	7
28	Solo llegadas	3.5	18	4	16	5	13
	Solo salidas	2.5	25	4	16	5	13
	Combinado	----	22	----	11	----	8
Capacidad plataforma		Posibles aptos. alternos		NOTAMS que afectan el AAR (vigencia y afectación)			
Com.	2	CPE	CZM				
Gral.	11	MID	CUN				
Observaciones		No cuenta con APP.					

# Plan 2014

- According with the information we started our internal coordination (CTM, CUN, MID, CAPMA and.
- Note: There is confidential information about guests, aircraft and hours of operation .

# MMCM external support

- 3 Cancún ATC's.
- 1 Cancún Office Dispatcher.
- Radio equipment for 2 frequencies (GND and FPQ))

# Plan 2014

- **ARRIVALS**

30 MIT via V28 descending to 10,000 ft and G765 (low performance) descending to 5,000 ft. from 13:00 UTC at 21:00 UTC.

MEX ACC will re-route flights via VER-CPE-CTM.

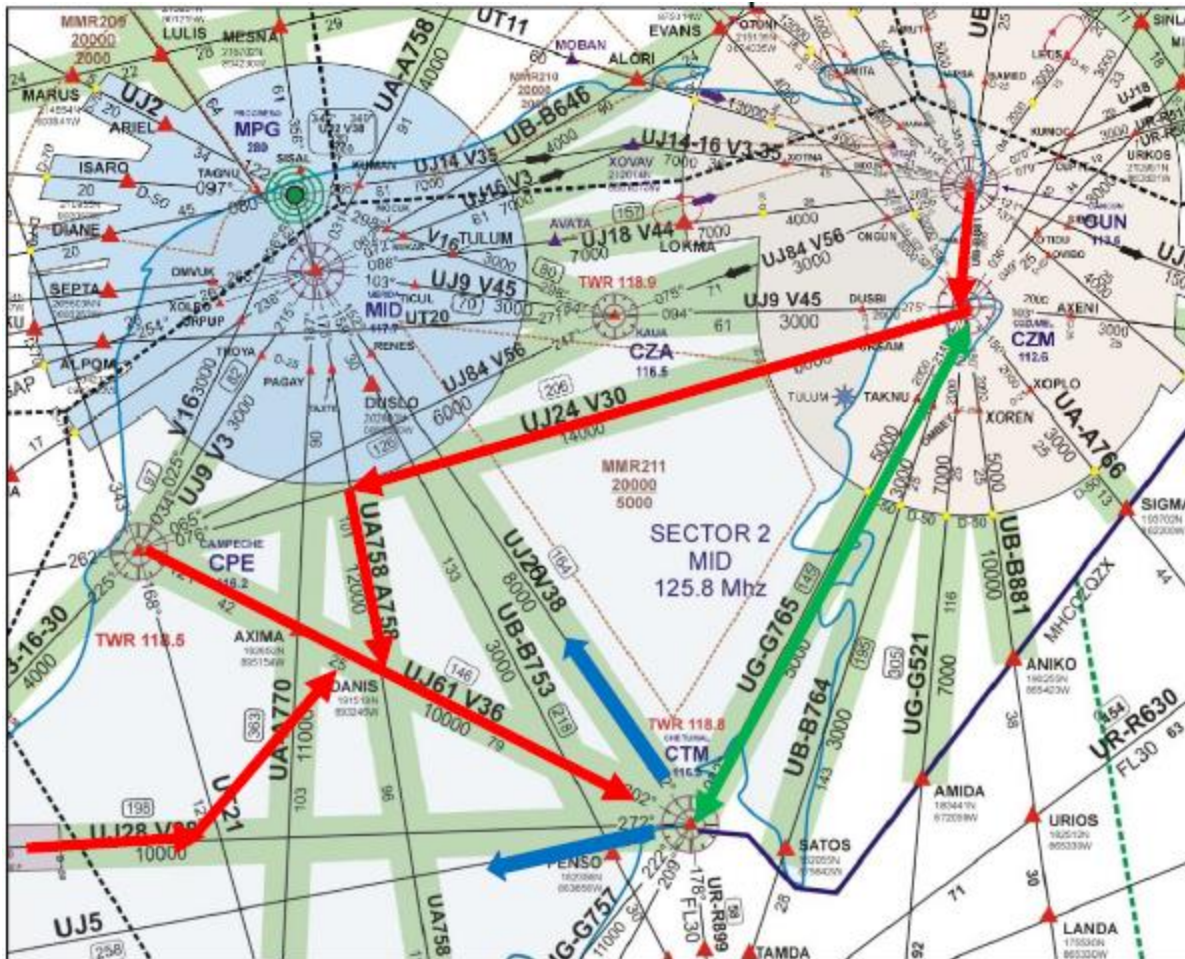
MTY ACC will re-route flights via VER.

- **DEPARTURES**

Via UJ26V38 to MID, UJ5 to VSA and vectored and G765 to Cozumel (low performance) from 13:00 UTC at 21:00 UTC.



# Flows september 9th. 2014



- Flujos de salida
- Flujos de llegada
- Flujo mixto  
Bajo performance

# Plan 2014

- **HOLDING PATTERNS**

If necessary aircraft will wait within the MID ACC area.

- **STAFF IN CANCUN AND MERIDA**

Both Cancun and Merida will have sufficient staff to make coordinations and regulation actions to ensure not to exceed capacity and AAR.

# Plan 2014

- **AUTHORIZATION TO OPERATE AT THE CHETUMAL AIRPORT**

MID ACC will take care of flights within his own area to Chetumal.

VFR flights will be restricted by NOTAM.

2 frequencies, 124.0 for GND and CD, and 122.3 for FPQ will be enabled.

SMART will not provide any ETD for traffic departing Chetumal from 13: 00 at 22:00 UTC.

# Information for pilots and FBO

## Cancún

### Operativo informe de gobierno Quintana Roo 9 de septiembre 2014

- Rutas de MMUN y MMCZ hacia MMCM 9 de septiembre 2014 de 13:00 a 21:00 UTC
  - CUN B881 CZM UJ24 CPE UJ61 CTM (Esperando vectores entre 80 y 50 m.n. antes de CPE)\*
  - CUN G765 CTM\*\*

*\*JETS*  
*\*\*BAJO PERFORMANCE (300KTS O MENOR)*
- Se emitirá NOTAM restringiendo operaciones VFR en MMCM de 14:00 a 18:00 UTC
- Se habilitarán las siguientes frecuencias en MMCM:
  - 124.0 Mhz Plan de vuelo grabado
  - 121.8 Mhz Control terrestre
  - 118.8 Mhz Control de aeródromo
- Todos los vuelos con destino MMCM estarán sujetos a control de flujo.
- El supervisor de TMA CUN coordinará todas las salidas con el supervisor de ACC MID



# Overview

Arrivals started about 9:30 a.m.

At 10:30 a.m., we decided to reduce to 15 MIT.

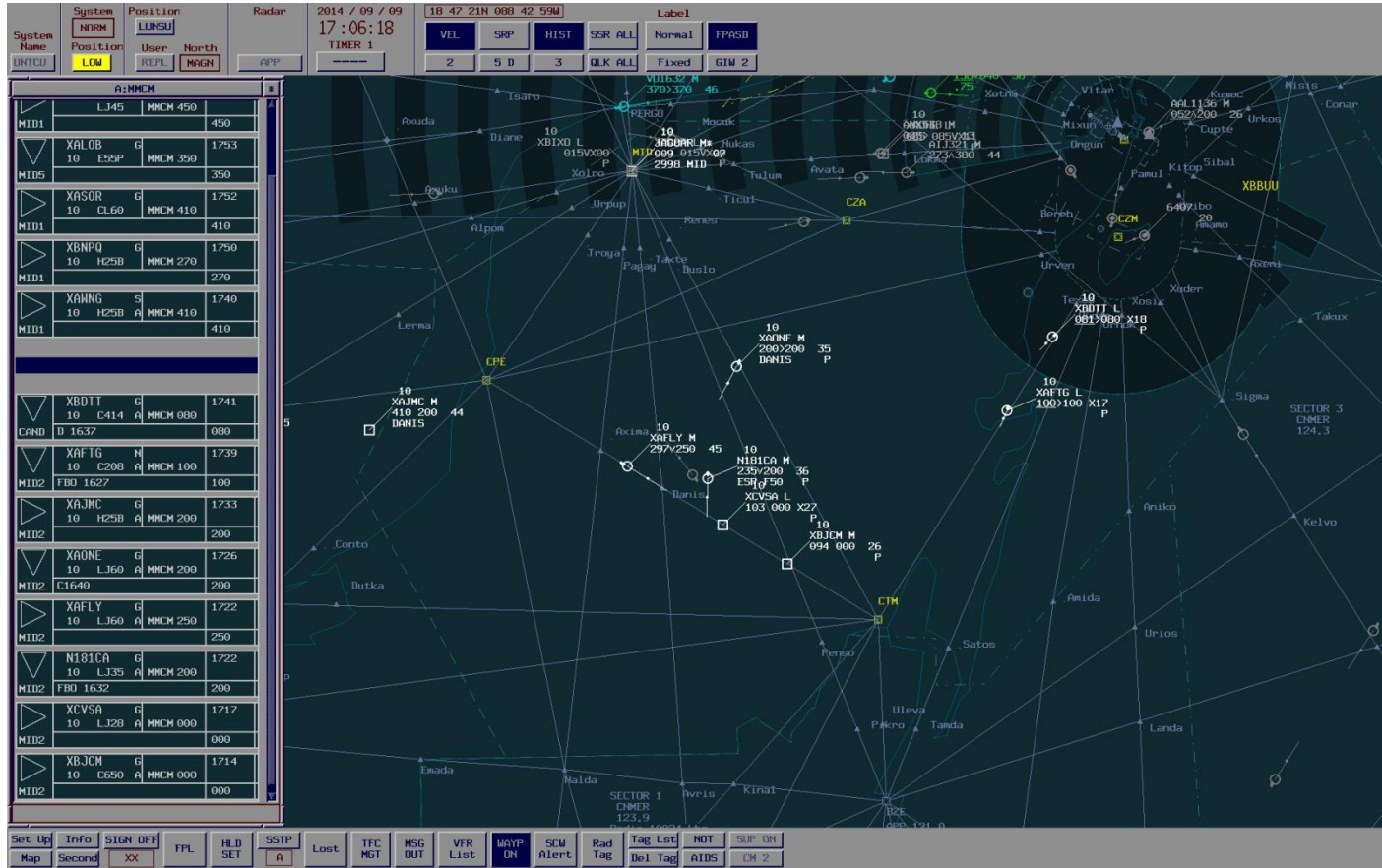
GND coordinated with government staff positions for each of the flights (VIP).

81 operations (arrival) were held, all in time.

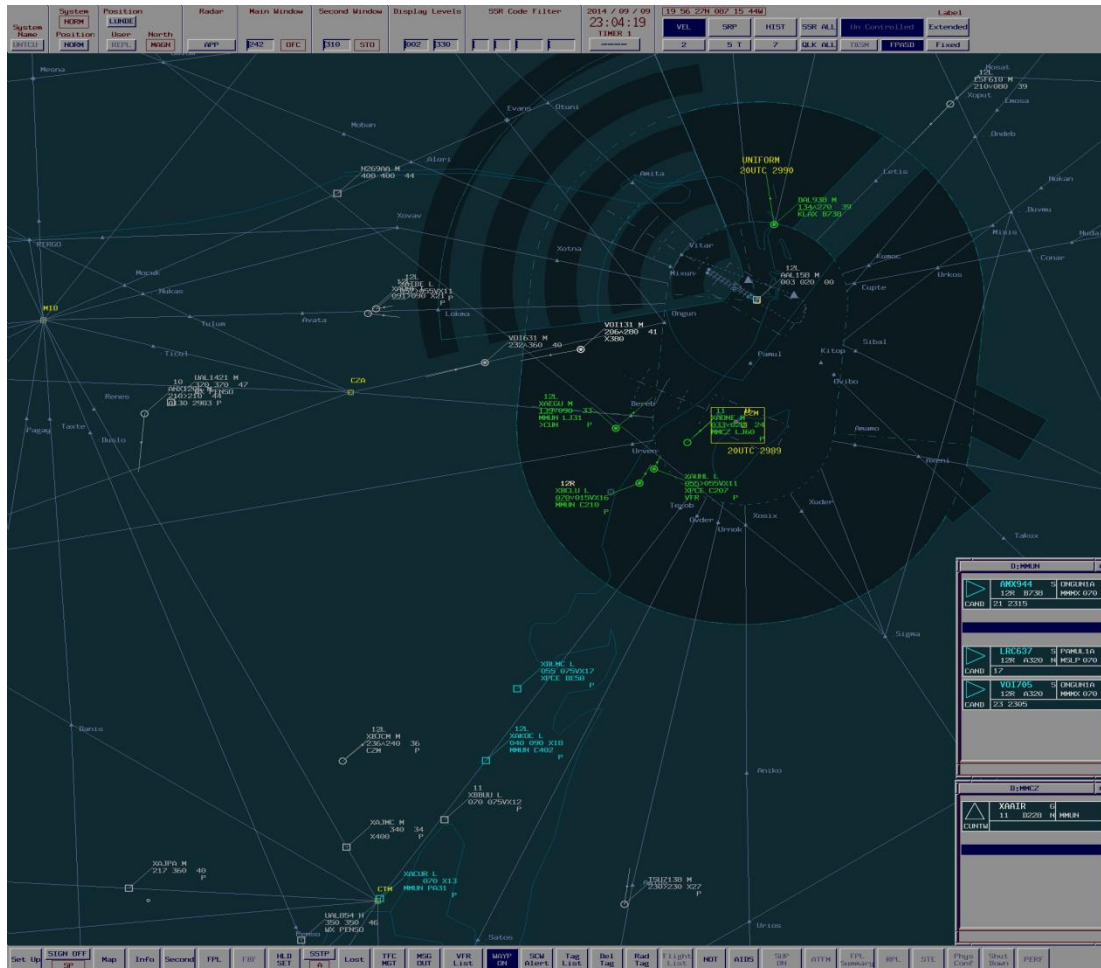
Almost all left that day.

We end approximately at 07:00 p.m.

# Arrival flows



# Departures



# Ramp photos



# Our Team

