

CANADA FLIGHT SUPPLEMENT / GPH 205

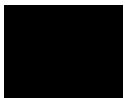
Effective 0901Z 20 November 2008 to 0901Z 15 January 2009

AERODROME/FACILITY DIRECTORY B731

QUAQTAQ QC (Cont'd)

CYHA

RWY DATA RCR	Rwy 01(005°)/19(185°) 3520x100 gravel Rwy 19 up 1.3% first 820' Opr
LIGHTING	01-AS(TE ME), 19-AS(TE ME) ARCAL-122.1 type J
COMM MF/ATF APRT RDO	aprt rdo (English only) ltd hrs O/T tfc 122.1 5NM 3200 ASL (CAR 602.98) 122.1 (V) 1230-2230Z†
NAV NDB	UHA 285 (M) N61 02 34 W69 37 38 081° 0.4NM to A/D Unmonitored when CARS closed
CAUTION	Birds activity at garbage dump, located aprx 800' NE of thld 19. Possibility of wandering dogs across rwy btwn village & garbage dump.

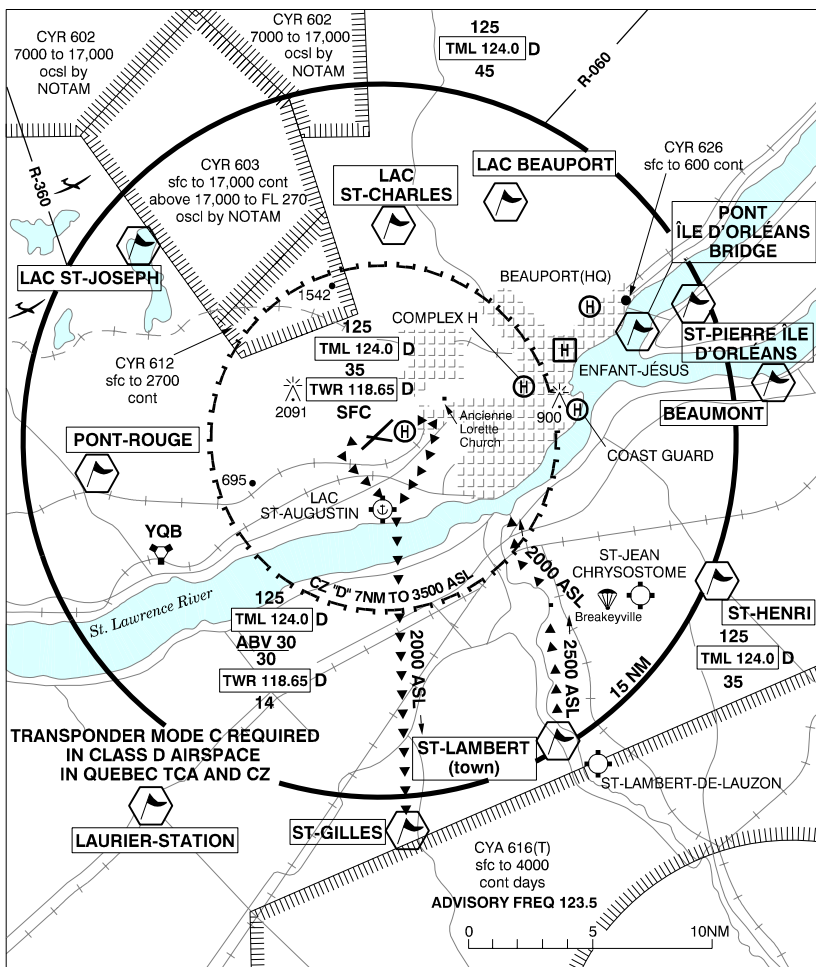


CANADA FLIGHT SUPPLEMENT / GPH 205

Effective 0901Z 20 November 2008 to 0901Z 15 January 2009

B732 AERODROME/FACILITY DIRECTORY

QUÉBEC VFR TERMINAL PROCEDURES CHART



LOCATION	IDENT	LAT/LONG
BEAUMONT	VCBMT	N46° 49.50 W71° 00.47
PONT ÎLE D'ORLÉANS BRIDGE	VCTMN	N46° 52.75 W71° 08.00
LAC BEAUPORT	VCBOP	N46° 56.80 W71° 16.57
LAC ST-CHARLES	VCLSC	N46° 56.00 W71° 23.00
LAC ST-JOSEPH	VCLSJ	N46° 55.00 W71° 38.63
LAURIER-STATION	VCLST	N46° 32.35 W71° 37.95
PONT-ROUGE	VCRED	N46° 45.00 W71° 42.00
ST-GILLES	VCGLS	N46° 30.50 W71° 21.97
ST-HENRI	VCHRN	N46° 41.50 W71° 03.63
ST-LAMBERT (town)	VCLAM	N46° 35.00 W71° 12.47
ST-PIERRE ÎLE D'ORLÉANS	VCPRO	N46° 53.00 W71° 04.47

CANADA FLIGHT SUPPLEMENT / GPH 205

Effective 0901Z 20 November 2008 to 0901Z 15 January 2009

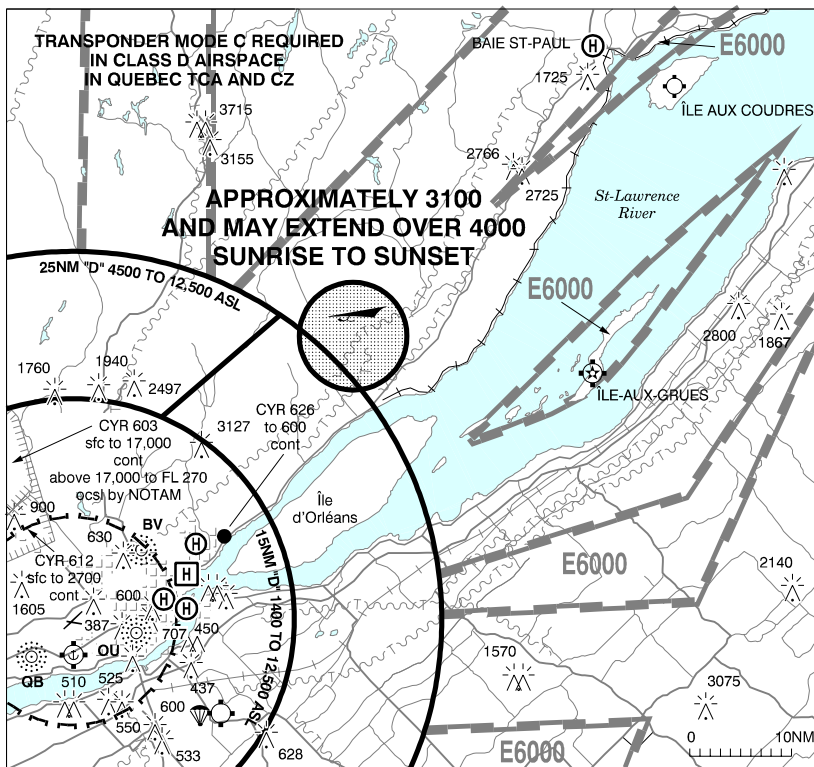
AERODROME/FACILITY DIRECTORY B733

QUÉBEC VFR TERMINAL PROCEDURES CHART (Cont'd)

QUÉBEC CLASS D AIRSPACE

In order to minimize inflight delays & to augment the tml radar capacity svc, VFR acft wishing to penetrate Québec class D airspace & not having filed a Flt Pln with arr or dep to/fr Québec, may obtain transponder code before tkof. Therefore, flight info could be transmitted to Montréal ACC 514-633-3211, 800-633-1353 or by Fax 514-633-2877 or Québec FIC 866-GOMÉTEO or 866-WXBRIEF, 30 min before intended flight toward TCA. Following must be specified: ident & type of acft, dep, destn & estimated time for airspace. Dly 11-02Z±. This transponder code may be obtained inflight thru the Québec FIC on freq 126.7 or 123.55 at least 10 min before entering TCA. Squak assigned code before initial ctc with ACC.

QUÉBEC VFR TERMINAL PROCEDURES CHART - PARAGLIDING OPERATIONS



PARAGLIDING OPERATIONS

Paragliding takeoffs are engaged from the top of Mont-Ste-Anne from sunrise to sunset. The operating zone for paraglider training extends up to approximately 3100 ASL, and may extend over 4000 ASL for accredited paragliders, within a 3 NM radius excluding the Québec class D Terminal airspace. Paragliders who wish to enter the Québec class D Terminal airspace must establish two way communications with Québec Terminal on 124.0 before entering the airspace (see map).

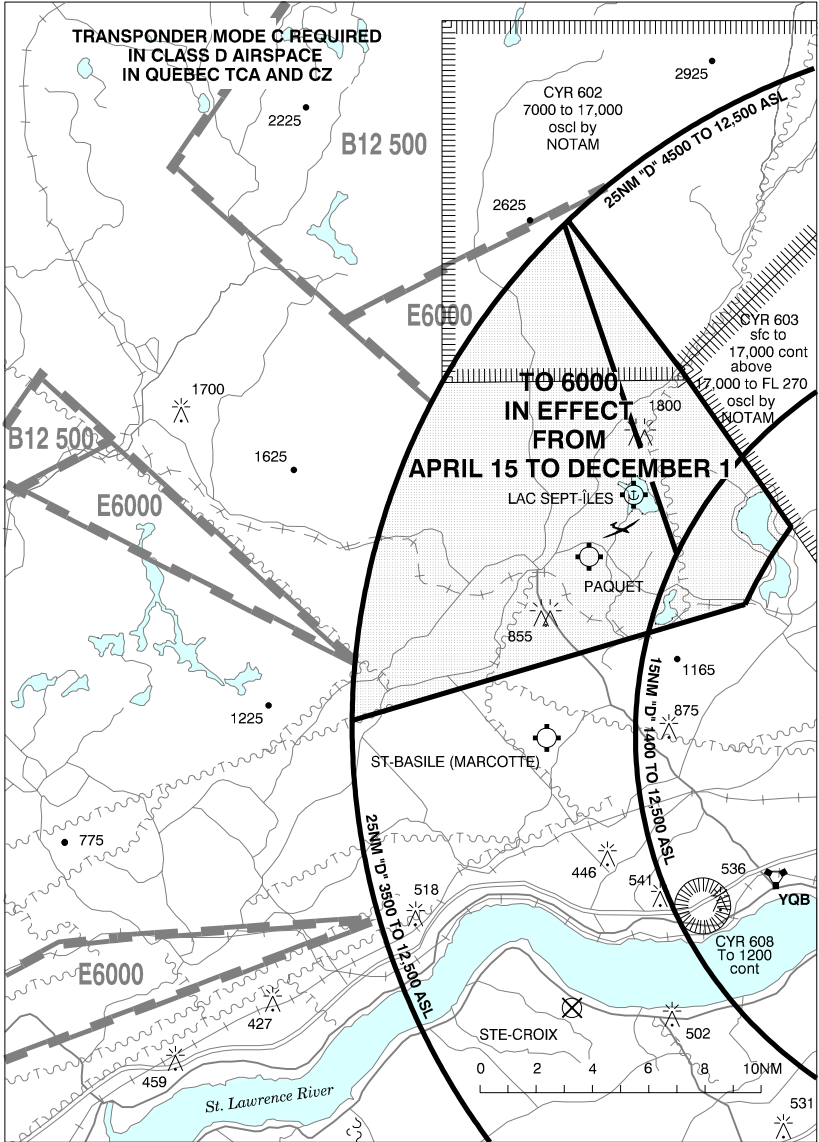
The density of traffic is increased by paragliding activities, the proximity of airways and VFR routes, as well as local tourist flights, and consequently, pilots flying in this vicinity should be extremely cautious. Comments regarding this subject can be directed to Transport Canada at 514-633-3240.

CANADA FLIGHT SUPPLEMENT / GPH 205

Effective 0901Z 20 November 2008 to 0901Z 15 January 2009

B734 AERODROME/FACILITY DIRECTORY

QUÉBEC VFR TERMINAL PROCEDURES CHART - GLIDER OPERATIONS



CANADA FLIGHT SUPPLEMENT / GPH 205

Effective 0901Z 20 November 2008 to 0901Z 15 January 2009

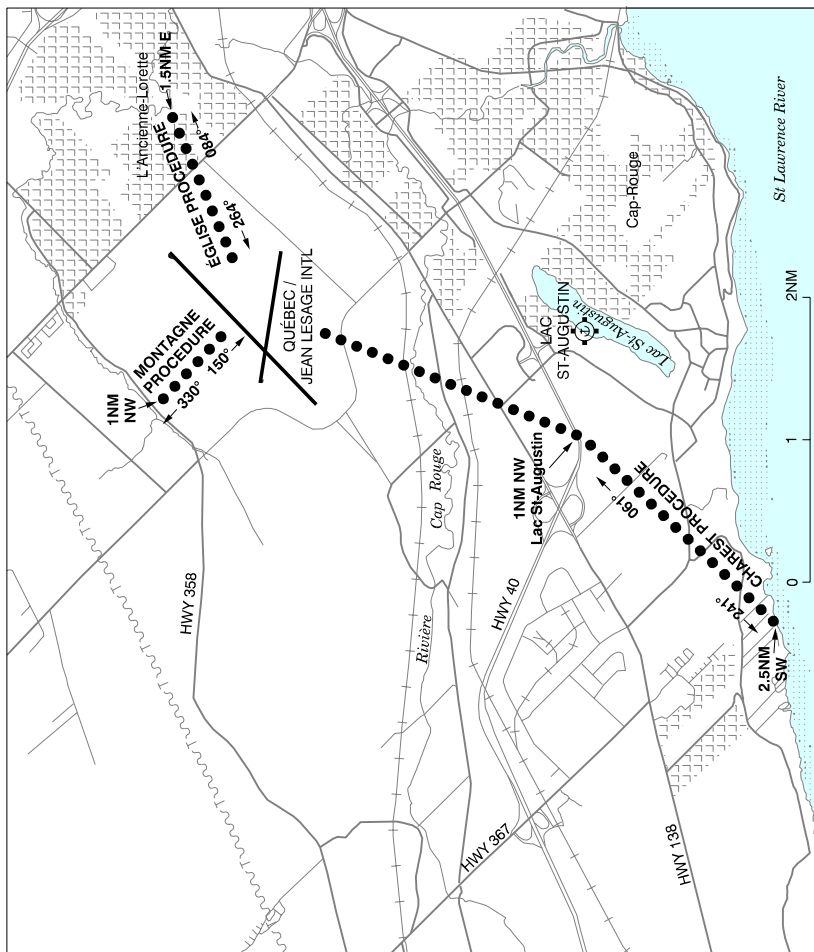
AERODROME/FACILITY DIRECTORY B735

QUÉBEC VFR TERMINAL PROCEDURES CHART - GLIDER OPERATIONS (Cont'd)

GLIDER OPERATIONS

Glider ops will occur in the region depicted above, from Apr 15 to Dec 1, fr the sfc up to 6000 ASL inclusively. Ctc Québec tml (freq 124.0) to inquire about the status of this area in class D airspace.

QUÉBEC HELI VFR TERMINAL PROCEDURES CHART



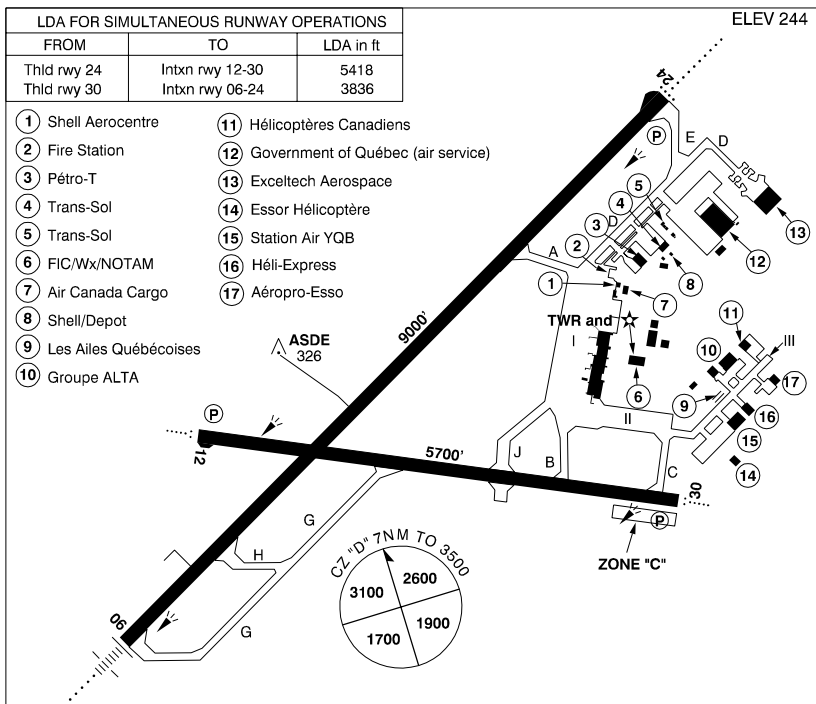
CANADA FLIGHT SUPPLEMENT / GPH 205

Effective 0901Z 20 November 2008 to 0901Z 15 January 2009

B736 AERODROME/FACILITY DIRECTORY

QUÉBEC / JEAN LESAGE INTL QC

CYQB



REF	N46 47 28 W71 23 36 6WSW 17°W UTC-5(4) Elev 244' A5002 F-21 LO6 LO7 LO8 HI5 HI6 T2 CAP
OPR	Aéroport de Québec Inc 418-640-2663 Cert
PF	A-2,3,6 10-05Z‡ A-1 C-4,5
CUST	AOE 888-226-7277 13-05Z‡
FLT PLN	(bil) NOTAM FILE CYQB
FIC	Québec 866-GOMÉTÉO or 866-WXBRIEF (Toll free within Canada) or 866-541-4105 (Toll free within Canada & USA) or 418-871-8678
ACC	Montréal 800-633-1353, IFR flt pln, IFR tng flts PPR.
WX	METAR H24. TAF H24, issue times: 00, 06, 12, 18Z.
SERVICES	Call out chg may be levied for one or more svcs
FUEL	100LL, JA-1, JB, F-34 (CON I IP JA-1, FSII HPR)
OIL	All
S	1,2,4,5,6
ARFF	7 (8 avbl 1 hr PNR) 1035-0425Z‡ O/T aprt clsd to acft 20 seats & abv, exc for diversions or as an altn A/D, without 1 hr PPR
SUP FL	D & A-ice
JASU	Elect Start 10/15
PVT ADV	Shell Aerocentre 123.0 0930-03Z‡; Avitair Inc 122.9 10-03Z‡ Mon-Fri, 10-02Z‡ Sat & 10-0230Z‡ Sun; Pétro T 122.95 11-03Z‡ 418-871-1958; Service Aérien Gouvernemental PPR 1hr 418-528-8600, 129.625; Contract Air Inc 122.725 418-877-4858; Pétro Air Svcs (Imperial Oil/Esso) 122.47 0930-03Z‡ 418-877-4419 Trans-Sol Aviation Ltée 122.9 418-877-6708, 888-592-3835
MIL CON	Petro Air Svcs (Imperial Oil/Esso) 418-877-4419

CANADA FLIGHT SUPPLEMENT / GPH 205

Effective 0901Z 20 November 2008 to 0901Z 15 January 2009

AERODROME/FACILITY DIRECTORY B737

QUÉBEC / JEAN LESAGE INTL QC (Cont'd)

CYQB

RWY DATA	Rwy 06(062°)/24(242°) 9000x150 asphalt Rwy 24 up 0.7% first 2500' Rwy 12(115°)/30(295°) 5700x150 asphalt
TWY	Twy J rstd to acct of 66,000 lbs or less
APRON	No parking on apron III
RCR	Opr 13-21Z†, 01-09Z† & as needed btwn these periods. Twy J no win maint. CRFI, PLR/PCN
LIGHTING	06-AN(TE HI), 24-AD (non-std 2800') AS(TE HI) P2, 12-AO(TE ME) P2 offset 12° to the S, 30-AO(TE ME) P2
COMM	(bil) Québec rdo 123.275 (FISE) 126.7 (bcst) (English) 134.6 418-871-6893; (French) 128.3 418-871-6895 Québec 121.9 250.0 Québec 118.65 236.6 (E) (emerg only 418-871-7691) Québec 124.0 VFR 127.85 IFR 322.8 118.65 (Québec TWR VFR acct at or below 3000 ASL) Montréal Ctr 135.025 270.9
NAV	VOT 115.7 NDB QB 230 (M) N46 44 59 W71 27 45 067° 3.0NM to thld rwy 06 CHAMPLAIN BV 336 (L) N46 52 16 W71 16 53 242° 5.9NM to thld rwy 24 STE-FOY OU 329 (L) N46 46 40 W71 17 23 295° 3.8NM to thld rwy 30 VORTAC YQB 112.8 Ch 75 N46 42 19 W71 37 36 081° 10.2NM to thld rwy 06 ILS IQB 109.5 (Rwy 06/24) RVR
PRO	Arr at 3000 ASL or lower before entering the CZ exc when overflying. Tng Flts dep apt to CYA616T as per VTPC to cross St-Augustin at 2000 ASL & maintain until St-Gilles checkpoint. Arr ctc twr leaving CYA616T & continue as per VTPC St-Lambert (town) checkpoint enter CZ 2000 ASL. Paragliding: Paragliding activities in the region of Mont-Ste-Anne refer to Planning Section - Quebec.
HELI	All heli must ctc Ground Ctl ZONE RESTRICTIONS: (See A/D sketch) - Zone Charlie, remain clear of rwy 12/30 not above 1000 ASL. Make turn before twy G. Avoid overflying north shore of Lac St-Augustin. ROUTES: (See Québec Heli VTPC) - Église: For arr & dep via Église, proceed to a point 1.5NM E, heading 264°/084° not above 750 ASL. - Charest: For arr & dep via Charest, proceed to a point 1NM NW of Lac St-Augustin then to a point 2.5NM SW heading 039°/219° not above 750 ASL. - Montagne: For arr & dep via Montagne, proceed to a point 1NM NW, heading 150°/330° not above 750 ASL.
CAUTION	Twin antennas aprx 2035' N of thld of rwy 24, 140 AGL, 336 ASL, only one antenna painted & lighted.

CANADA FLIGHT SUPPLEMENT / GPH 205

Effective 0901Z 20 November 2008 to 0901Z 15 January 2009

B738 AERODROME/FACILITY DIRECTORY

QUÉBEC FIC – RCO (emerg only 418-871-7464)

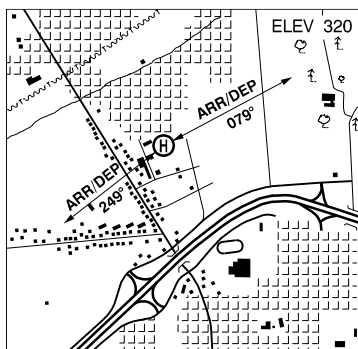
Bathurst	123.45 (FISE) DRCO (N47 37 W65 44)
Bonaventure	123.55 (FISE) DRCO (N48 08 W66 07)
Brisay	123.55 (FISE) DRCO (N54 23 W70 35)
Charlo	126.7 (FISE) (U) (N47 59 W66 20)
Chibougamau	126.7 (FISE) (N49 47 W74 32)
Gaspé	123.475 (FISE) 126.7 (bcst) (N48 47 W64 29)
Grand Falls/St. Leonard	126.7 (FISE) DRCO (N47 05 W67 46)
Îles-de-la-Madeleine	126.7 (FISE) (N47 22 W61 54)
Inukjuak	126.7 (FISE) DRCO (N58 27 W78 07)
Kangiqsujuaq (Wakeham Bay)	123.475 (FISE) 126.7 (bcst) DRCO (N61 35 W71 56)
Kangirsuk	126.7 (FISE) DRCO (N60 01 W70 00)
Kuujuuaq	123.55 (above 12,500 ASL) (FISE) 126.7 (at or below 12,500 ASL) (FISE) 5680 (N58 06 W68 26)
Kuujuuarapik	123.475 5680 (FISE) 126.7 (bcst) (N55 17 W77 46)
La Grande	123.25 (FISE) 126.7 (FISE) (N53 38 W77 42)
La Grande-4	122.5 (FISE) DRCO (N53 52 W73 25)
Matagami	123.55 (FISE) DRCO (N49 46 W77 48)
Mont-Joli	123.25 (FISE) 126.7 (N48 37 W68 12)
Mont-Laurier	122.1 (FISE) DRCO (N46 32 W75 49)
Mont-Mégantic	123.25 (FISE) DRCO (N45 27 W71 07)
Montréal/Pierre Elliott Trudeau Intl	123.55 (FISE) (above 12,500 ASL) 126.7 (at or below 12,500 ASL) (FISE) (N45 29 W73 46)
Natashquan	126.7 (FISE) (N50 11 W61 49)
Nemiscau	123.275 (FISE) 126.7 (bcst) (N51 44 W76 06)
Ottawa/Gatineau	126.7 (FISE) (N45 31 W75 34)
Ottawa/M.-C. Intl	123.15 (FISE) (N45 19 W75 40)
Parc des Laurentides	123.15 (FISE) DRCO (N48 01 W71 16)
Puvirnituq	123.275 (FISE) 126.7 (bcst) RCO (N60 03 W77 17)
Québec	123.275 (FISE) 126.7 (bcst) (N46 47 W71 23)
Roberval	123.55 5680 (FISE) 126.7 (bcst) (N48 31 W72 16)
Rouyn	123.475 (FISE) 126.7 (bcst) (N48 12 W78 50)
St-Augustin	126.7 (FISE) (N51 13 W58 40)
Salluit	126.7 (FISE) DRCO (N62 11 W75 40)
Schefferville	126.7 (FISE) 312.7 (FISE) RCO Jul 1-Sep 30; 126.7 (FISE) 312.7 (FISE) DRCO Oct 1- Jun 30 (N54 49 W66 46)
Sept-Îles	123.275 (FISE) 126.7 (bcst) (N50 13 W66 16)
Val-d'Or	126.7 (FISE) (N48 03 W77 47)
Wabush	126.7 (FISE) (N52 55 W66 52)

QUÉBEC TERMINAL (emerg only 514-633-3365)

QUÉBEC / BEAUPORT (HQ) QC (Heli)

CTS2

REF	N46 52 45 W71 11 38 17°W UTC-5(4) Elev 320' A5002
OPR	Hydro-Québec 418-845-7000 Cert PPR
PF	C-1,2,3,4,5,6
FLT PLN	(bil) NOTAM FILE CYQB Québec 866-GOMÉTÉO or 866-WXBRIEF (Toll free within Canada) or 866-541-4105 (Toll free within Canada & USA)
PAD DATA	64' dia concrete 144' x 144'
COMM	
TWR	Québec 118.65
PRO	Arr/dep 079° & 249°.

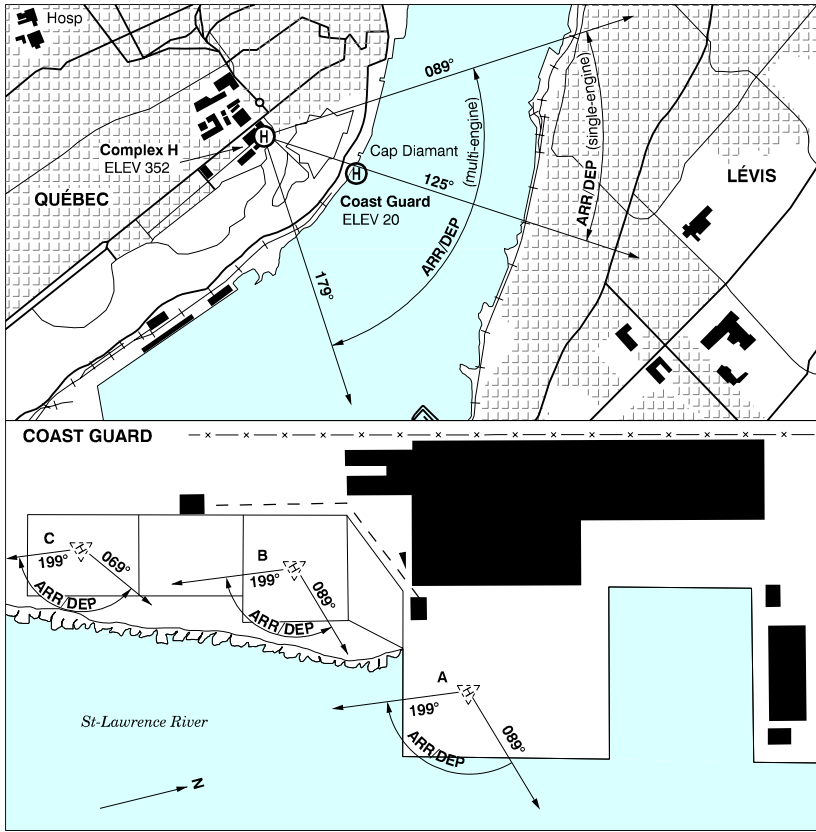


CANADA FLIGHT SUPPLEMENT / GPH 205

Effective 0901Z 20 November 2008 to 0901Z 15 January 2009

AERODROME/FACILITY DIRECTORY B739

QUÉBEC QC (Heliports)



QUÉBEC (COAST GUARD) QC (Heli)

CTJ2

REF	N46 48 22 W71 12 13 17°W UTC-5(4) Elev 20' A5002
OPR	Canadian Coast Guard 418-648-7488 13-2130Z† Mon-Fri O/T 418-648-3599 or 800-463-4393 Cert PPR
FLT PLN	(bil) NOTAM FILE CYQB
FIG	Québec 866-GOMÉTÉO or 866-WXBRIEF (Toll free within Canada) or 866-541-4105 (Toll free within Canada & USA)
PAD DATA	Pad A; 60' x 60' 115' x 115' Pad B; 58' x 58' 86' x 86' Pad C; 44' x 59' 86' x 86'
LIGHTING	Pad A; LO
COMM	(bil)
TWR	Québec 118.65
A/G	129.07 ctc 10 min prior to arr
PRO	Arr/dep; Pad A 089°-199°, Pad B 089°-199°, Pad C 069°-199°
CAUTION	Possibility of vehicle traffic between pads A and C, contact A/G 129.07

CANADA FLIGHT SUPPLEMENT / GPH 205

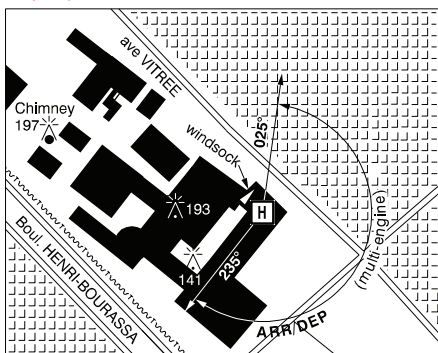
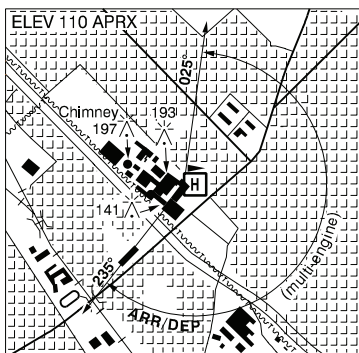
Effective 0901Z 20 November 2008 to 0901Z 15 January 2009

B740 AERODROME/FACILITY DIRECTORY

QUÉBEC (COMPLEX H) QC (Heli) CSZ2

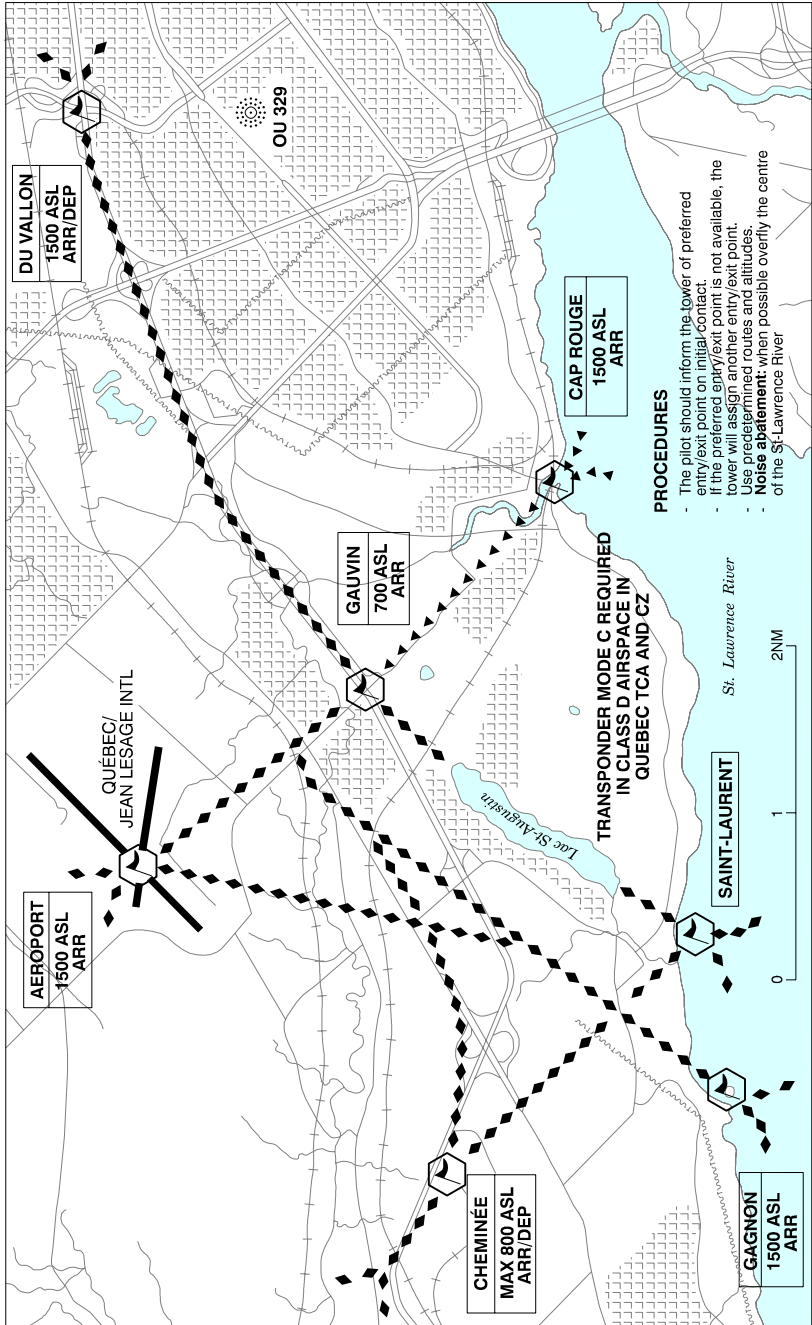
REF	N46 48 26 W71 12 42 17°W UTC-5(4) Elev 352' A5002
OPR	Govt of Quebec 418-643-9880/3604 Cert PPR
FLT PLN FIC	(bil) NOTAM FILE CYQB Québec 866-GOMÉTÉO or 866-WXBRIEF (Toll free within Canada) or 866-541-4105 (Toll free within Canada & USA)
PAD DATA RCR	48' x 48' 9500 lbs Rstd to heli with an overall length of 43' or less & tail rotor clearance of 35 inches or more. Tkof & Idg area delimited by an 8 inch rim. Lighting rods 27 inches above surface.
COMM TWR	(bil) Québec 118.65
PRO	Climb and descent fr alt must be conducted in sector over river; <u>Multi-engine helicopters:</u> btwn 089° and 179° fr helipad. <u>Single-engine helicopters:</u> btwn 089° and 125° fr helipad.

QUÉBEC / HÔPITAL DE L'ENFANT-JÉSUS QC (Heli) CTJ5



REF	N46 50 15 W71 13 31 Adj 17°W UTC-5(4) Elev 110' aprx A5002
OPR	Hôpital de L'Enfant-Jésus 418-649-5870 Fax 418-649-5905 Cert PNR
FLT PLN FIC	NOTAM FILE CYQB Québec 866-GOMÉTÉO or 866-WXBRIEF (Toll free within Canada) or 866-541-4105 (Toll free within Canada & USA)
PAD DATA	86' x 86' concrete rooftop (max overall length of 56.2') Rstd to multi-engine heli Max heli weight 11,900 lbs for H1 & H2.
LIGHTING	RY(ME) RF(FL) ARCAL-123.05 type K
COMM TWR	Québec 118.65
PRO	Restricted arr/dep to an arc clockwise btwn 025° to 235° from heliport. Multi-engine helicopters that may hover at least 15' above all obstacles located within the arr/dep path when used with one engine out as per heli flight manual.
CAUTION	Unmarked P-line aprx 800' SW of pad. Guard rail and access ramp inside safety area.

QUÉBEC / LAC ST-AUGUSTIN VFR TERMINAL PROCEDURES CHART



CANADA FLIGHT SUPPLEMENT / GPH 205

Effective 0901Z 20 November 2008 to 0901Z 15 January 2009

B742 AERODROME/FACILITY DIRECTORY

QUÉBEC / LAC ST-AUGUSTIN VFR TERMINAL PROCEDURES CHART (Cont'd)

LOCATION	IDENT	LAT/LONG
AEROPORT	VCAIR	N46° 47.30 W71° 23.85
CAP ROUGE	VCAPR	N46° 44.85 W71° 20.60
CHEMINÉE	VCCHM	N46° 45.43 W71° 26.55
DU VALLON	VCDVL	N46° 47.90 W71° 17.40
GAGNON	VCGAG	N46° 43.78 W71° 25.88
GAUVIN	VCGOV	N46° 45.97 W71° 22.37
SAINT-LAURENT	VCSLR	N46° 43.98 W71° 24.45

NOISE OPERATING RESTRICTIONS AND NOISE ABATEMENT PROCEDURES

Pursuant to CAR 602.105, the Aircraft Operating Criteria Noise Restrictions Order, the following noise abatement procedures and noise control requirements apply at the Lac St-Augustin (Québec) water airport.

Noise Operating Restrictions

- a. Commercial operations except in special circumstances (forest fire fighting, rescue, police operations, etc.) are not permitted at Lac St-Augustin, unless the operator obtains written authorization from the Regional Director Civil Aviation Transport Canada at the following address:
Regional Director Civil Aviation
Transport Canada
Regional Administration Building
700, Leigh Capr  ol
Dorval, Qu  bec, H4Y 1G7
Fax 514-633-3052
- b. Touch and go landings are not authorized.
- c. Training flights are not authorized.
- d. Take-offs or landings are not authorized during the following time periods:
Before 0800 (local time) Monday through Friday;
Before 0900 (local time) Saturdays;
Before 1000 (local time) Sundays.
- e. Take-offs by the same aircraft at intervals of less than 60 minutes are not authorized during the following time periods:
After 1800 (local time) Monday through Saturday;
All day Sunday; and
All day on Qu  bec-designated statutory holidays.

CANADA FLIGHT SUPPLEMENT / GPH 205

Effective 0901Z 20 November 2008 to 0901Z 15 January 2009

B744 AERODROME/FACILITY DIRECTORY

QUESNEL BC

CYQZ

REF	N53 01 34 W122 30 37 2N 20°E UTC-8(7) Elev 1788' A5014 E-15 LO2 HI3 CAP	
OPR	City 250-992-2208 Cert	
PF	A-1,6 C-2,3,4,5	
FLT PLN	NOTAM FILE CYQZ	
FIC WX PIK	Kamloops 866-WXBRIEF (Toll free within Canada) or 866-541-4101 (Toll free within Canada & USA) Legacy AWOS (See COMM) 250-992-5320. WxCam TAF 12-06Z, issue times: 12, 19, 01Z. Operations Building - 24 hr airside access	
SERVICES		
FUEL	100LL, JA-1 with FSII, SP 250-992-2208 (Self serve, Visa, Mastercard & pvt accounts only). Heli refuelling at heli.	
S	2,4,5,6	
RWY DATA	Rwy 13(130°)/31(310°) 5500x200 asphalt	
RCR	Opr CRFI, Win maint Nov 1-Mar 31 - 14-05Z Mon-Fri, 15-0130Z Sat, 15-05Z Sun, exc hols O/T 2 hr PNR, call out chg may be levied. PLR/PCN	
PAD DATA	50' x 50' concrete 70' x 70'	
LIGHTING	13-AO(TE ME) P2, 31-AO(TE ME) P2 ARCAL-122.2 type K	
COMM		
RCO	Williams Lake rdo 122.2 (RAAS) 14-06Z‡	
MF	Williams Lake rdo 14-06Z‡ O/T tfc 122.2 5NM 4800 ASL (CAR 602.98)	
Legacy AWOS	124.4	
NAV		
NDB	YQZ 359 (M) N52 57 38 W122 29 10 330° 3.6NM to A/D	
PRO	Rgt hand circuits rwy 13 (CAR 602.96). Ngt circuit pro see VTPC.	
CAUTION	Adj to and E of both apchs are hills marked by hazard bcns. 100' AGL trees along W side of rwy 500' fr rwy edge. Only pilots familiar with local terrain should use this aprt dur hrs of darkness. Ngt ops not recommended unles all 4 hazard bcns are oprg. Extv smoke from pulp mills frequently obscures apch to rwy 31. Reported winds may not be representative of landing area winds.	

CANADA FLIGHT SUPPLEMENT / GPH 205

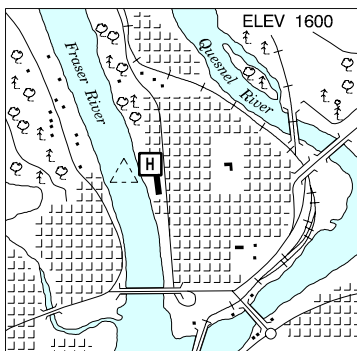
Effective 0901Z 20 November 2008 to 0901Z 15 January 2009

AERODROME/FACILITY DIRECTORY B745

QUESNEL (HOSP) BC (Heli)

CAZ4

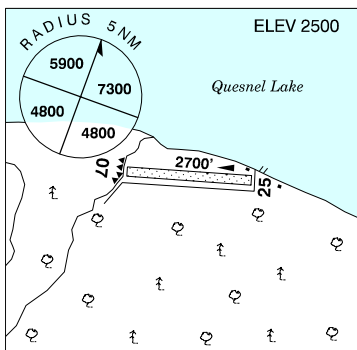
REF	N52 58 57 W122 30 01 Adj 20°E UTC-8(7) Elev 1600' A5014
OPR	Quesnel Hosp Admin 250-992-0600 Cert PPR
PF	B-1,4 C-2,3,5,6
FLT PLN	NOTAM FILE CYQZ FIC Kamloops 866-WXBRIEF (Toll free within Canada) or 866-541-4101 (Toll free within Canada & USA)
PAD DATA	60' x 60' concrete
COMM	MF Williams Lake rdo 14-06Z† O/T tfc 122.2 5NM 4800 ASL centred on Quesnel land A/D (CAR 602.98)
PRO	Arr/dep along river.



QUESNEL LAKE BC

CBK6

REF	N52 30 54 W121 02 42 Adj E 20°E UTC-8(7) Elev 2500' A5014 E-15
OPR	Elysia Resort 250-243-2433 Reg
PF	A-1,2,5
FLT PLN	NOTAM FILE CYWL FIC Kamloops 866-WXBRIEF (Toll free within Canada) or 866-541-4101 (Toll free within Canada & USA)
SERVICES	S 4,5
RWY DATA	Rwy 07/25 2700x150 turf Rwy 25 up 2% RCR Opr From May 15 to Oct 15. No win maint. Rwy soft when wet.
COMM	ATF tfc 123.2 2NM 4000 ASL
PRO	Rgt hand circuits rwy 25 (CAR 602.96).
CAUTION	Ravine W thld 07. 50' trees at both rwy ends. 60' P-lines at thld of rwy 25.



CANADA FLIGHT SUPPLEMENT / GPH 205

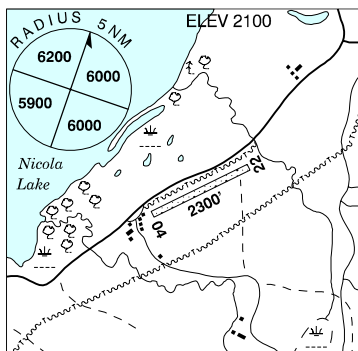
Effective 0901Z 20 November 2008 to 0901Z 15 January 2009

B746 AERODROME/FACILITY DIRECTORY

QUILCHENA BC

CBT6

REF	N50 10 W120 30 19°E UTC-8(7) Elev 2100' A5004 E-15
OPR	Quilchena Cattle Co Ltd 250-378-4449 Reg
PF	A-5 B-1,2
FLT PLN	NOTAM FILE CYKA FIC Kamloops 866-WXBRIEF (Toll free within Canada) or 866-541-4101 (Toll free within Canada & USA)
SERVICES	
FUEL	MG-1, MG-3
RWY DATA	Rwy 04/22 2300x50 gravel RCR Opr May-Oct No win maint.
COMM	
ATF	tfc 123.2 5NM 5100 ASL
CAUTION	Watch for cattle on rwy in fall and winter.



QUILL LAKE SK

CKE2

REF	N52 04 W104 16 Adj S 11°E UTC-6 Elev 1750' A5006 A5016 E-16
OPR	Town 306-383-2592/2261 Reg
PF	C-1,2,4,5
FLT PLN	NOTAM FILE CYXE FIC Edmonton 866-WXBRIEF (Toll free within Canada) or 866-541-4102 (Toll free within Canada & USA)
SERVICES	
S	5
RWY DATA	Rwy 08(079°)/26(259°) 2500x100 turf RCR Opr No win maint
LIGHTING	08-(LO), 26-(LO) Only 2000' lgtd
COMM	
ATF	tfc 123.2 5NM 4800 ASL
PRO	Rgt hand circuits rwy 08 (CAR 602.96).

