



MMCV / CVM GRAL. PEDRO JOSÉ MÉNDEZ INTERNATIONAL AIRPORT

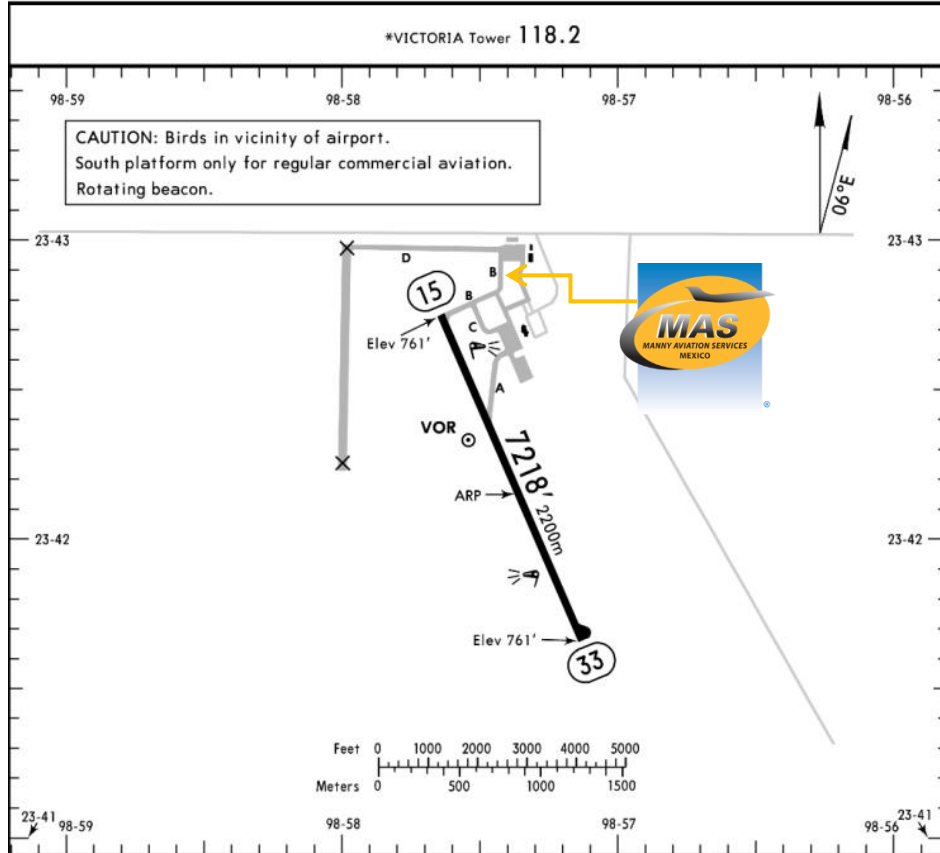
MMCV/CVM
Apt Elev **761'**
N23 42.2 W098 57.4

JEPPESSEN CIUDAD VICTORIA, MEXICO
18 DEC 15 (13-1) GEN PEDRO JOSE MENDEZ INTL

Address:

KM 18.5 Carretera a Soto la Marina,
Municipio de Güémez Ciudad Victoria,
Tamaulipas ZC 87230.

Telephone: +52 (722) 273 0981.



Operational Information

Operational hours: Winter 1300-0100
UTC / Summer 1200-0000 UTC.

Customs and Immigration: During airport
operational hours.

Fuel available: Avgas 100/130, Jet A-1.

Fuel delays can be expected as the
government fuel provider has top priority
for commercial operations.

Fuel method of payment:

Credit card, debit card, Uvair-World Fuel
card or ASA release.

Fire Cat: V.

ADDITIONAL RUNWAY INFORMATION

RWY	USABLE LENGTHS	LANDING BEYOND	TAKE-OFF	WIDTH
15 33	HIRL ① PAPI-L (angle 3.0°)			148' 45m

① On request in IFR conditions.

TAKE-OFF & DEPARTURE PROCEDURE

FOR FILING AS ALTERNATE

TAKE-OFF & DEPARTURE PROCEDURE		FOR FILING AS ALTERNATE	
Rwys 15, 33			
1 & 2 Eng	300-1	A	1000-3
3 & 4 Eng	300-½	B	
		C	
		D	

For departure procedures and MCA's see
Ciudad Victoria SIDs.



MMCV / CVM GRAL. PEDRO JOSÉ MÉNDEZ INTERNATIONAL AIRPORT

Arrival

1. Upon arrival, crew must follow ATC instructions for taxiing to General Aviation Apron.
2. Crew and passenger passports will be asked by one of our staff representatives to take them to immigration facilities.
3. When all passengers deplane, customs, federal police and agriculture officers will come onboard to make a quick inspection about any remaining luggage, food or people. Please remember that all luggage must be offloaded and food will be disposed.
4. Passengers must walk inside the general aviation building to make the CIQ (Customs, Immigration and quarantine) processes. Luggage cannot be inspected without passenger's presence.
5. The whole process will take around 15-20 minutes.

Departure

1. Crew and passenger passports will be asked by one of our staff representatives to take them to immigration facilities as well as their luggage.
2. The luggage will be taken inside the Xray machine for inspection.
3. The whole process will take around 15-20 minutes.

