



MMCE/ CME
 CIUDAD DEL CARMEN INTERNATIONAL AIRPORT

MMCE/CME

Apt Elev 10'
 N18 39.1 W091 48.0

JEPPESEN CIUDAD DEL CARMEN, MEX
 17 JUN 16 (10-9) Eff 23 Jun CIUDAD DEL CARMEN INTL

Address:

Calle 31 S/N
 Ciudad del Carmen, Campeche
 ZC 24190

Telephone: +52 (722) 273 0981

Operational Information

Operational hours: Winter 1300/0100
 UTC / Summer 1200-0000 UTC.

Customs and immigration: During airport
 operational hours.

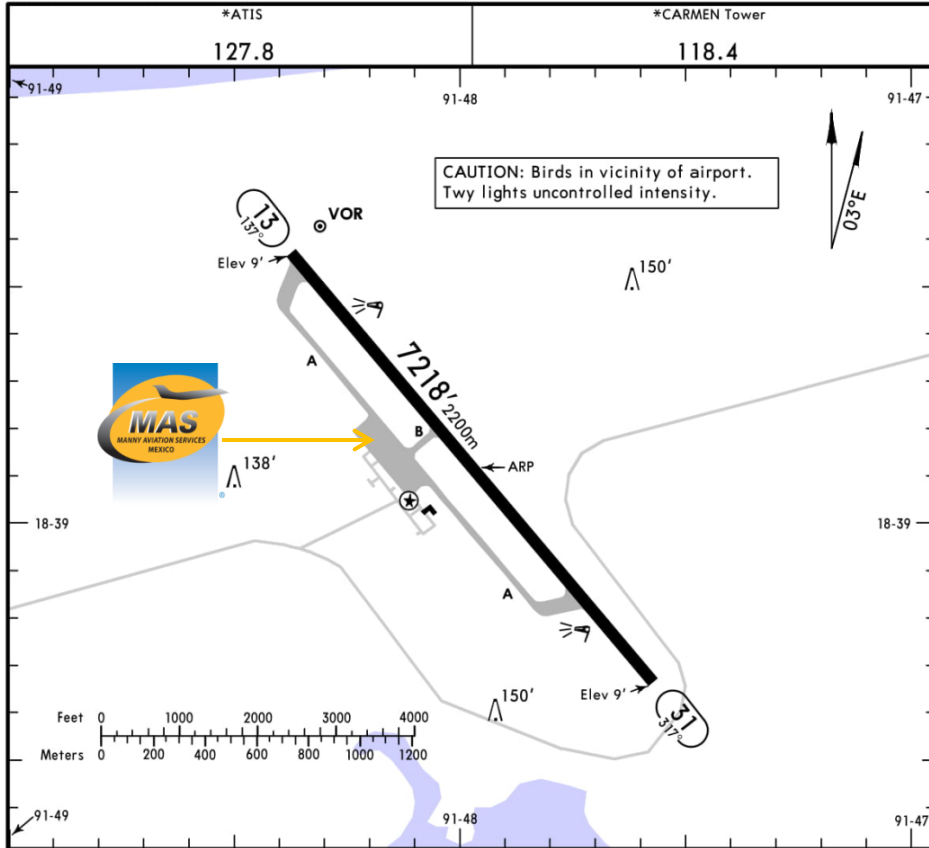
Fuel available: Avgas 100/130, Jet A-1

Fuel delays can be expected as the
 government fuel provider has top priority
 for commercial operations.

Fuel method of payment:

Credit card, debit card, Uvair-World Fuel
 card or ASA release.

Fire Cat: VI



ADDITIONAL RUNWAY INFORMATION

RWY	USABLE LENGTHS	LANDING BEYOND		TAKE-OFF	WIDTH
		Threshold	Glide Slope		
13 31	HIRL PAPI-L (angle 3.0°)				148' 45m

TAKE-OFF & DEPARTURE PROCEDURE

FOR FILING AS ALTERNATE

	All Rwys	
1 & 2 Eng	200-1	A
3 & 4 Eng		B
		C
		D

DEPARTURE PROCEDURE: For departures and
 MCAs see Ciudad Del Carmen 10-3/10-3A.

CHANGES: Chart reindexed, rwy end elevations added.

© JEPPESEN, 1999, 2016. ALL RIGHTS RESERVED.

MANNY AVIATION SERVICES

T +52 (722) 273 09 81 · F +52 (722) 273 11 14 - 273 34 59 · US & Can Toll Free 1 877 50 MANNY ops@mannyaviation.com customer.service@mannyaviation.com



MMCE/ CME CIUDAD DEL CARMEN INTERNATIONAL AIRPORT

Arrival

1. Upon arrival, crew must follow ATC instructions for taxiing to General Aviation Apron.
2. Crew and passenger passports will be asked by one of our staff representatives to take them to immigration facilities.
3. When all passengers deplane, customs, federal police and agriculture officers will come onboard to make a quick inspection about any remaining luggage, food or people. Please remember that all luggages must be offloaded and food will be disposed.
4. Passengers must walk inside the general aviation building to make the CIQ (Customs, Immigration and quarantine) processes. Luggage cannot be inspected without passenger's presence.
5. The whole process will take around 10-15 minutes.

Departure

1. Crew and passenger passports will be asked by one of our staff representatives to take them to immigration facilities as well as their luggage.
2. The luggage will be taken inside the Xray machine for inspection
3. The whole process will take around 15-20 minutes.

