



# MMCM / CTM CHETUMAL INTERNATIONAL AIRPORT

**MMCM/CTM**

Apt Elev **39'**  
N18 30.3 W088 19.6

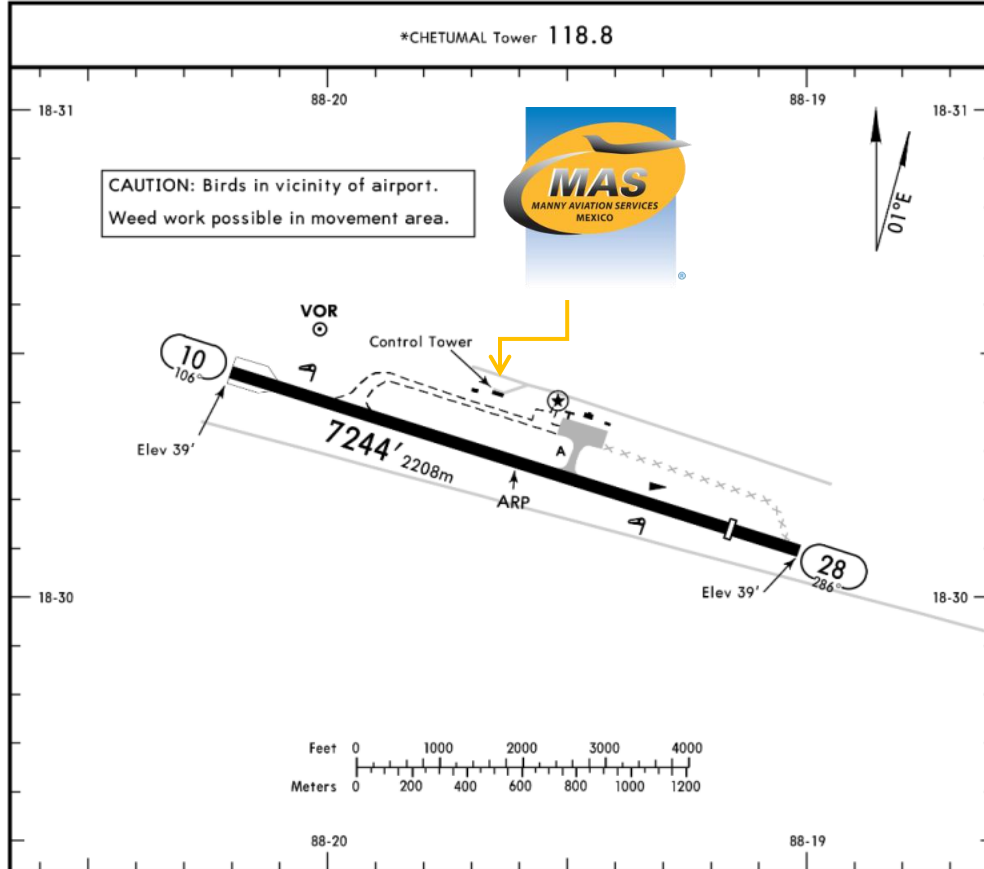
**JEPPESEN**

15 JAN 16

**(13-1)**

**CHETUMAL, MEXICO**

**CHETUMAL INTL**



**Address:**

Prolongación Av. Revolución 660,  
Col. Industrial Chetumal,  
Quintana Roo

**Telephone:** +52 (722) 273 0981

**Operational Information**

Operational hours: 1200 - 0000 UTC  
Customs and immigration: During airport  
operational hours.

Fuel available: Avgas 100/130, Jet A-1

Fuel delays can be expected as the  
government fuel provider has top priority  
for commercial operations.

**Fuel method of payment:**

Credit card, debit card, Uvair-World Fuel  
card or ASA release.

**Fire Cat:** V

**ADDITIONAL RUNWAY INFORMATION**

RWY	USABLE LENGTHS LANDING BEYOND	TAKE-OFF	WIDTH
10 28	HIRL PAPI-L (angle 3.0°)	6375' 1943m	151' 46m

PROP	TAKE-OFF	FOR FILING AS ALTERNATE
	All Rwys	
1 & 2 Eng	500-1	A B C D 800-2
3 & 4 Eng	300-1	
ALL JET		



## MMCM / CTM CHETUMAL INTERNATIONAL AIRPORT

### Arrival

1. Upon arrival aircraft must follow ATC instructions to taxi into General Aviation apron.
2. Passengers will disembark and walk into the main terminal to follow customs and immigration procedures; all bags, backpacks, handbags, briefcases must be taken inside the terminal to be subject to a review process by the customs and federal police authorities, the passengers must be with their luggage all the time.
3. When the passengers disembark the aircraft, one representative of customs, federal police and agricultural authorities will embark the aircraft to check if there is no one of the passengers left or any luggage and food that cannot be introduced into Mexican territory.
4. The whole process will take around 15-20 minutes.

### Departure

1. Crew and passenger passports will be asked by one of our staff representatives to take them to immigration facilities as well as their luggage.
2. The luggage will be taken inside the x ray clearance due a brief security inspection.
3. The whole process will take around 15-20 minutes.

