

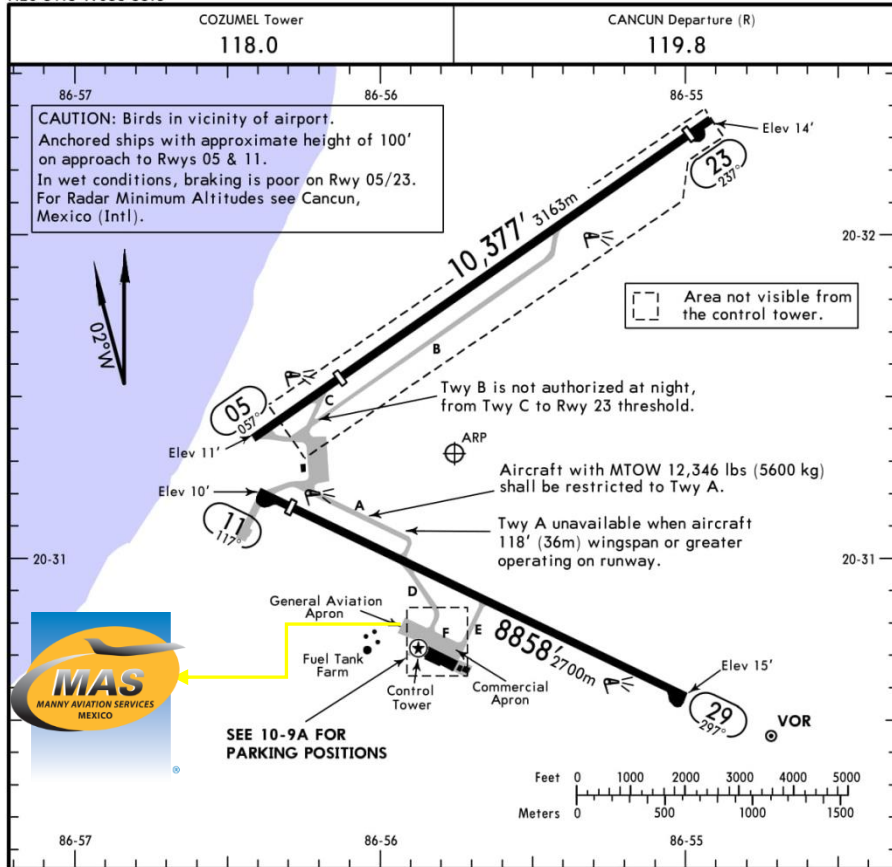


MMCZ/CZM COZUMEL INTERNATIONAL AIRPORT

MMCZ/CZM
Apt Elev 15'
N20 31.3 W086 55.8

JEPPESEN
23 MAR 18 (10-9) Eff 29 Mar

COZUMEL, MEXICO
COZUMEL INTL



Address:

Carretera Aeropuerto Internacional de Cozumel Quintana Roo. ZC. 77600.

Telephone: +52 (722) 273 0981.

Operational Information:

Operational hours: 24 hrs.

Customs and Immigration: 24 hrs.

Fuel available: Avgas 100/130, Jet A-1.

Fuel delays can be expected as the government fuel provider has top priority for commercial operations.

Manny's Representatives: Daniel Larios Juarez and Daniel Larios Jr.

Fuel method of payment:

Credit card, debit card, Uvair-World Fuel card or ASA release.

Fire Cat: VII.

NOTE: Now, there is no GPU and lavatory service available, it is must to be coordinated 24 hrs in advance prior to arrival.

RWY		USABLE LENGTHS		TAKE-OFF	WIDTH
		Threshold	Glide Slope		
05 23	PAPI-L (angle 3.0°)	7917' 2413m		9885' 3013m	148'
		9885' 3013m		7917' 2413m	45m
11 29	HIRL REIL PAPI-L (angle 3.0°)	8202' 2500m		8202' 2500m	148'
					45m

① Military Operations only.

	TAKE-OFF			FOR FILING AS ALTERNATE
	Rwy 05/23		Rwy 11/29	
	DAY	NIGHT		
1 & 2 Eng	VFR	NOT APPLICABLE	200-½	A
3 & 4 Eng				B
				C
				D

CHANGES: Declared distances, notes.

© JEPPESEN, 2001, 2018. ALL RIGHTS RESERVED.



MMCZ/CZM COZUMEL INTERNATIONAL AIRPORT

Arrival

- Aircraft coming from Bahamas, Central and South America must follow ATC instructions to be parked on position number 6 for inspection, due to the current NOTAM.
 - Flights coming from North America, Asia, Europe and Africa will be parked at General Aviation apron.
 - If you overnight the ACFT will be parked at General Aviation.
1. In overnight or coming from North America, Asia, Europe and Africa, crew and passenger passports will be asked by one of our staff.
 2. Mexican army members will inspect the aircraft and the entire luggage with a trained dog.
 3. Once the army is done with the inspection, crew and passengers are allowed to go to the GA building to clear Customs and Immigration.
 4. The whole process will take around 30-40 minutes.

Departure

1. Our team will ask for crew / passenger's passports and luggage.
2. The luggage will be taken inside the Xray machine for Customs' inspection.
3. The whole procedure will take around 15-20 minutes.

