



MMCU/CUU
 GRAL. DIV. P.A. ROBERTO FIERRO VILLALOBOS
 INTERNATIONAL AIRPORT

MMCU/CUU

Apt Elev **4462'**
 N28 42.1 W105 57.8

JEPPESEN

22 APR 16 (10-9) Eff 28 Apr

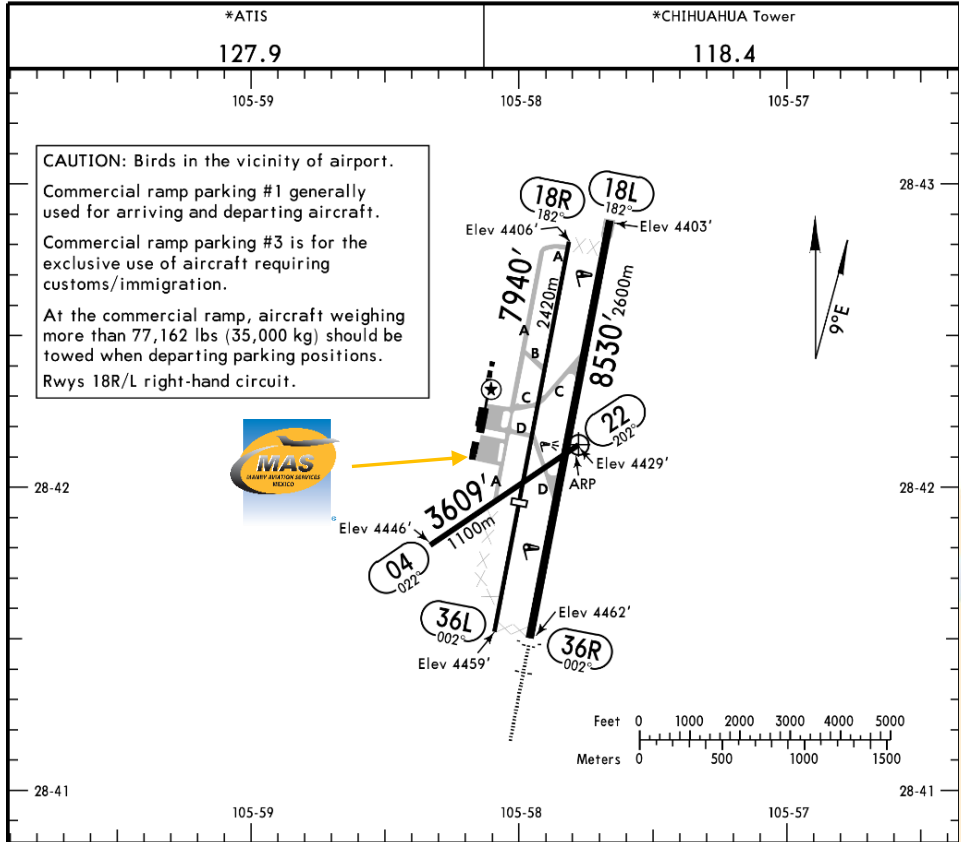
CHIHUAHUA, MEXICO

GEN DIV P A ROBERTO
 FIERRO VILLALOBOS INTL

Address:

Boulevard Juan Pablo II, Km 14,
 Chihuahua, Chihuahua
 ZC. 31390.

Telephone: +52 (722) 273 0981



Operational Information

Operational hours: Winter 1400-0400
 UTC / Summer 1300-0300 UTC.
 Customs and Immigration: During airport
 operational hours.
 Fuel available: Avgas 100/130 Jet A-1.

Fuel delays can be expected as the
 government fuel provider has top priority
 for commercial operations.

Fuel method of payment:

Credit card, debit card, Uvair-World Fuel
 card or ASA release.

Fire Cat: VI.

RWY	USABLE LENGTHS			WIDTH
	Threshold	Landing Beyond Glide Slope	TAKE-OFF	
04 ① 22				98' 30m
18L 36R	HIRL REIL PAPI-L (angle 3.0°)			148' 45m
	HIRL ALSF-1 REIL PAPI-L (angle 3.0°)	7405' 2257m		
18R ② 36L			5315' 1620m	75' 23m

- ① Maximum weight of 33,069 lbs (15,000 kg).
- ② VFR operations only. Weight bearing capacity of 33,069 lbs (15,000 kg).

	TAKE-OFF			FOR FILING AS ALTERNATE		
	Rwy 36R Authorized Only When CUU VOR Operating	Rwy 18L	Rwy 18R/36L, Rwy 04/22	Precision	Non-Precision	
1 & 2 Eng	500-1	1200-3	VFR	A	600-2	1400-3
3 & 4 Eng				B		
	C					
	D					



MMCU/CUU
GRAL. DIV. P.A. ROBERTO FIERRO VILLALOBOS
INTERNATIONAL AIRPORT

Arrival

1. Upon arrival, crew must follow ATC instructions for taxiing to General Aviation terminal.
2. Crew and passenger passports will be asked by one of our staff representatives to take them to immigration facilities.
3. When all passengers deplane, customs, federal police and agriculture officers will come onboard to make a quick inspection about any remaining luggage, food or people. Please remember that all luggages must be offloaded and food will be disposed.
4. Passengers must walk inside the general aviation building to make the CIQ (Customs, Immigration and quarantine) processes. Luggage cannot be inspected without passenger's presence.
5. The whole process will take around 15-20 minutes.

Departure

1. Crew and passenger passports will be asked by one of our staff representatives to take them to immigration facilities as well as their luggage.
2. The luggage will be screened inside the x ray machine due a brief security inspection.
3. The whole process will take around 15-20 minutes.

