



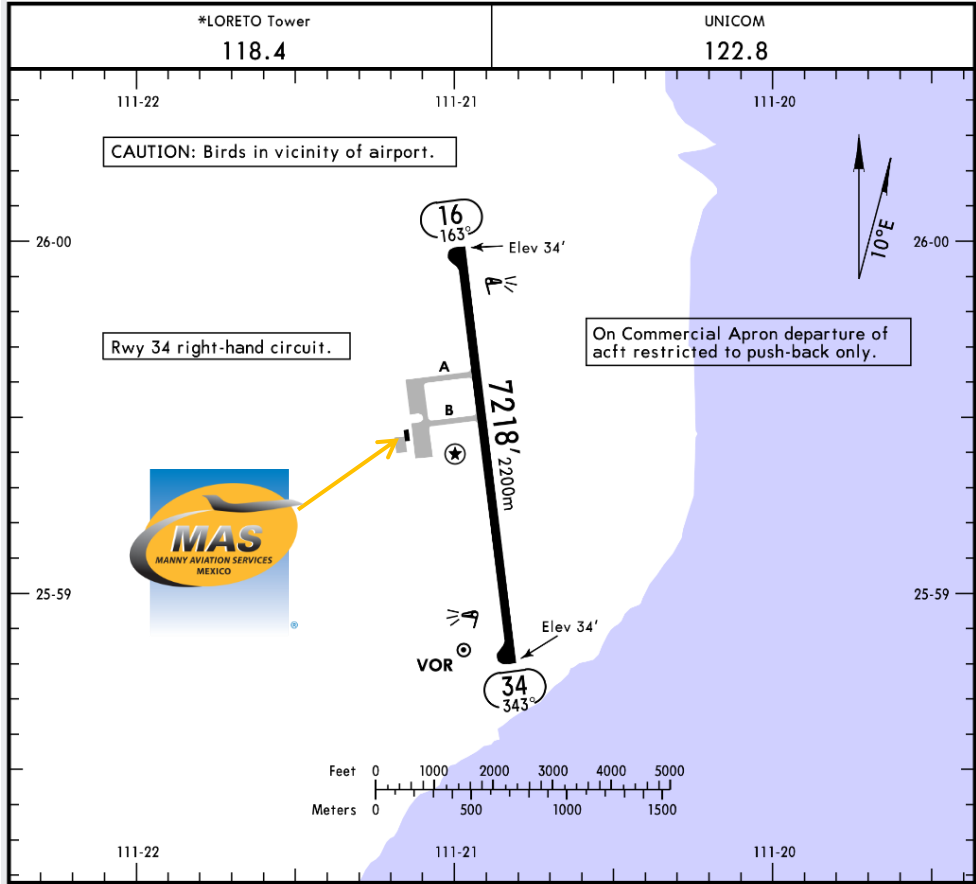
MMLT/LTO LORETO INTERNATIONAL AIRPORT

MMLT/LTO

Apt Elev 34'
N25 59.4 W111 20.8

JEPPESEN
27 MAR 15 (13-1)

LORETO, MEXICO
LORETO INTL



Address:

km 5 carretera transpeninsular
aeropuerto internacional de, 23880
Loreto, B.C.S.

Telephone: +52 (722) 273 0981.

Operational information:

Operational hours:

Winter 1400-0200 UTC

Summer 1300-0100 UTC.

Customs and Immigration:

During airport operational hours.

FBO Loreto Aviation Services:

During airport operational hours.

NO OVERTIME IS AVAILABLE AT THE TIME DUE THE PANDEMIC

Inflight catering: Service is available up to 24 hrs in advance.

Fuel available:

Avgas 100/130, Jet A.

Fuel delays can be expected as the government fuel provider has top priority for commercial operations.

Fuel method of payment:

Fuel release through your preferred fuel vendor, credit or debit card.

Fire Cat: VI.

| RWY | ADDITIONAL RUNWAY INFORMATION | | | USABLE LENGTHS | | | WIDTH |
|-----|-------------------------------|------|-----------------------|----------------|-------------|----------|-------|
| | HIRL | REIL | PAPI-L (angle 3.0°) | Threshold | Glide Slope | TAKE-OFF | |
| 16 | | | ① PAPI-L (angle 3.0°) | | | | 148' |
| 34 | | | PAPI-L (angle 3.0°) | | | | 45m |
| | | | | | | | |
| | | | | | | | |
| | | | | | | | |
| | | | | | | | |

① Use restricted to 5 NM due to obstruction beyond 5 NM.

| | TAKE-OFF | | | FOR FILING AS ALTERNATE | |
|-----------|----------|--------|-------|-------------------------|-------|
| | Rwy 16 | Rwy 34 | | DAY | NIGHT |
| | | DAY | NIGHT | | |
| 1 & 2 Eng | 500-1 | 500-1 | 700-1 | A | NA |
| 3 & 4 Eng | | | | B | |
| | C | 800-2½ | | | |
| | D | | | | |



MMLT/LTO LORETO INTERNATIONAL AIRPORT

Arrivals:

1. Upon arrival Crew must follow ATC instructions to taxi into the GA / FBO Apron.
2. CIQ will be cleared inside the FBO facilities.
3. The whole procedure will take around 10-15 minutes.
4. Transportation services can wait on the parking lot outside the FBO.

Departures:

1. For departure the passenger and crew will arrive at the FBO and they will complete customs and immigration procedures inside the building.
2. After this process, the passenger will be cleared to board the aircraft.
3. The whole procedure will take around 10-15 minutes.

