



Tour No II

Be in Chicago

at 5:30 June 7<sup>th</sup> <sup>at 10:00</sup>  
Beverly Hotel

Monday

8 AM.

stay

Leave Tue. 9 pm.

# world congress of gastroenterology

*Washington, D. C., U. S. A.*

*May 25-31 1958*





*Sheraton Park Hotel*

*Shoreham Hotel*



*Program*

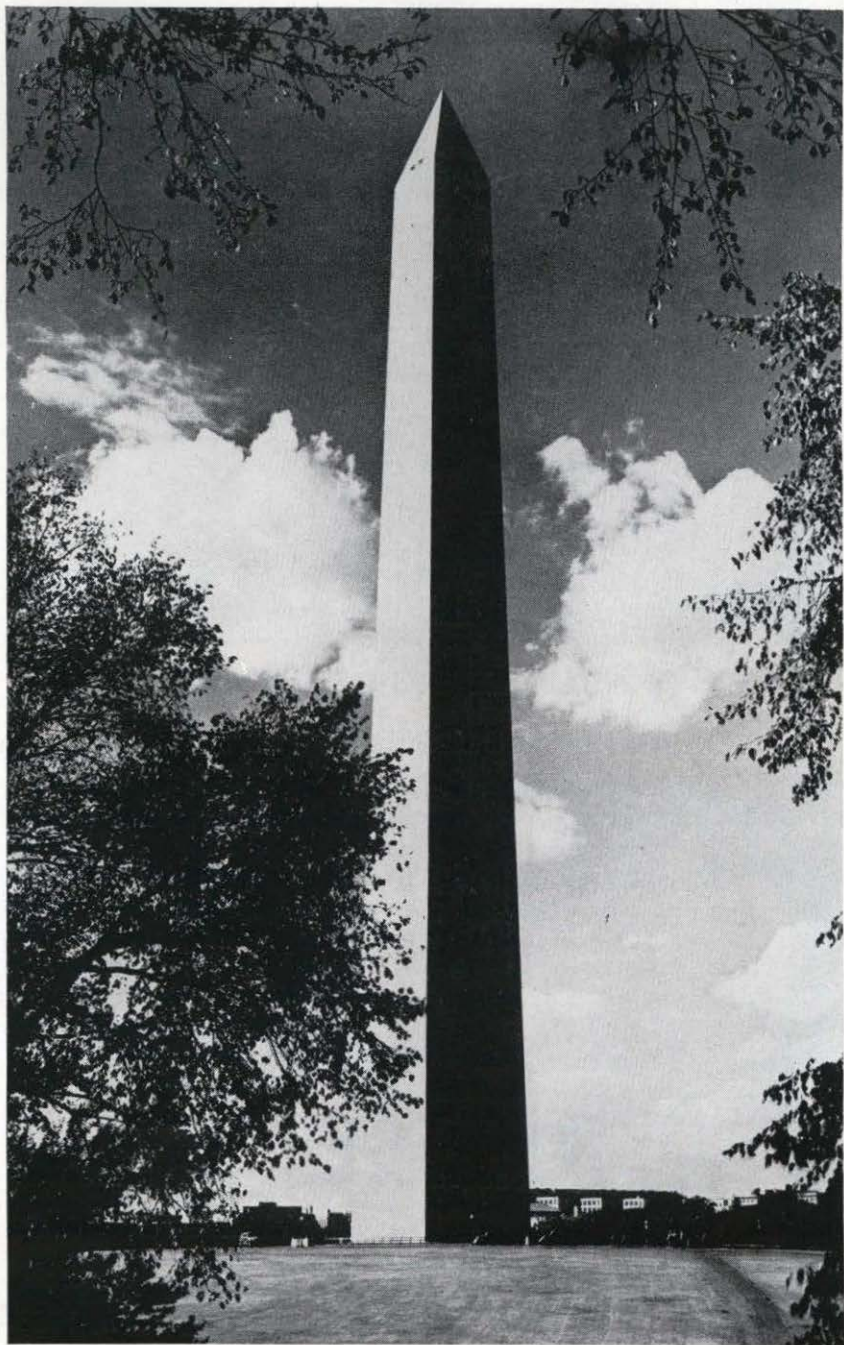
**WORLD CONGRESS  
OF GASTROENTEROLOGY**

AND THE

**59th ANNUAL MEETING OF THE AMERICAN  
GASTROENTEROLOGICAL ASSOCIATION**

Headquarters: SHERATON PARK HOTEL  
WASHINGTON, D. C.  
U. S. A.

MAY 25th through 31st, 1958



*Washington Monument*

## CHAIRMAN'S FOREWORD

A complete account of the proceedings of the Congress is contained in these pages. The scientific program is divided into two principal parts. Five half-day sessions are devoted to symposia, followed by panel discussions dealing with five timely, important aspects of gastroenterology and nutrition. This segment of the proceedings is devoted to differences in epidemiology and in clinical behavior patterns of the diseases under consideration as they occur in various parts of the world. These sessions truly represent an exchange of scientific knowledge on an international basis. Simultaneous interpretation in English, French, German and Spanish will be available. I should like to express my appreciation to the distinguished members of these symposia for their willingness to participate.

In addition to the symposium-panel sessions there are approximately 175 original papers. They also are arranged in symposia, being listed as "Original Contributions." These symposia will be followed by discussions from the floor, according to the established custom. Unfortunately, almost an equal number of requests for participation in the scientific sessions had to be denied because of limits by time. The names of scientists from 49 countries other than the United States of America appear in the program.

A symposium and panel discussion devoted to methods of graduate training in gastroenterology is considered to be a unique feature of the program. We have been fortunate in having for our inaugural session and banquet a group of most distinguished gentlemen. The list of scientific and commercial exhibits should prove of unusual interest.

The Secretary General and members of the Central Committee join with me in expressing appreciation to all those participating in the scientific deliberations of the Congress, to the Chairman and members of the Post Convention Tour Committee, and to that group of splendid physicians in Washington comprising the Committee on Local Arrangements for the Congress.

It will be noted that a very interesting program has been arranged by the host society, the American Gastroenterological Association. Also, during the week, three other organizations, The American Gastroscopic Society, The Gastroenterology Research Group and The American Association for the Study of Liver Diseases, will conduct meetings in Washington. This week, May 24-31, should prove a truly outstanding one in the annals of gastroenterology.

In behalf of the Central Committee responsible for the organization of the Congress, I extend to all those attending best wishes for a truly rewarding and memorable week.

HENRY L. BOCKUS, M.D.  
*Chairman, Central Committee*

## TABLE OF CONTENTS

Welcome to Washington .....	9
History of the World Congress .....	11
General Information .....	12
Congress Information .....	16
Committees .....	19
Scientific Program Schedule .....	23
Outline of Scientific and Social Programs .....	42
Exhibits .....	53
Social and Ladies' Program .....	58
American Gastroenterological Association .....	60
American Gastroscopic Society .....	72
Gastroenterology Research Group .....	74
American Association for the Study of Liver Diseases .....	75
Tours .....	76
Acknowledgements .....	78
Speakers Index .....	80

## A Welcome to the World Congress from the American Gastroenterological Association

The untimely death of Dr. Mandred W. Comfort, President of the American Gastroenterological Association, places upon me the responsibility of expressing in behalf of the Association how honored we are to be the host to the World Congress of Gastroenterology.

We extend to all physicians throughout the world who are attending this congress a most sincere and cordial invitation to attend the full scientific programs and to participate in the many attractive social and educational activities of the Congress in Washington, D.C. We are particularly looking forward to your participation in the sessions of the American Gastroenterological Association, beginning Friday morning immediately following the closing of the World Congress and ending Saturday noon. It will be our privilege to make your visit with us professionally stimulating and personally enjoyable.

CLIFFORD J. BARBORKA, M.D.

*President-Elect*

American Gastroenterological Association

## INFORMATION INDEX

While attending the World Congress in Washington, D.C., there are facilities, services, and other information about which you will want to know, such as:

Amusement Guide .....	13
Badges .....	15
Banking and foreign currency .....	12
Bars and bar laws .....	14
Busses .....	13
Dress .....	15
Emergency Situations .....	12
First Aid .....	12
Good Eating in Washington—Restaurants and their specialties .....	13
Headquarters of the World Congress .....	15
Hotel Physician .....	12
Interpreters .....	12
Ladies lounge .....	15
The Hospitality Desk .....	15
Lost and Found .....	12
Mail and Messages .....	14
Map of Washington .....	14
News Bulletin .....	15
Notices .....	12
Information on registrants .....	15
Parking .....	14
Photographer .....	13
Postage rates .....	12
Press Room .....	15
Public Transportation .....	13
Religious Facilities .....	15
Renting automobiles .....	14
Sales tax .....	13
Snacks .....	14
Taxis .....	13
Tipping .....	13
Time Zone .....	12
Travel agent .....	14
Tours—local and post-Congress .....	14



## Washington — the Nation's Capital

Washington is one of the world's most beautiful cities, with many attractions for the visitor to enjoy. Its shrines, monuments and public buildings, its delightful parks, its theatres, concerts, art exhibits, all afford pleasure. And here, too, the visitor, whether tourist or convention delegate, feels the impact of history past, and in the making.

The site of the Nation's Capital was selected originally in 1791. Washington, the country's first President, selected Major Pierre L'Enfant, French engineer, to draw up a plan for the projected capital. The city was established in 1800, with Washington, Jefferson and Madison having selected the designs for most of the public buildings.

Most of the public buildings, old and new, have been concentrated in a comparatively small area at the city's south end, between Pennsylvania Avenue and the south side of the Mall. The broad Mall runs from the Lincoln Memorial, at Memorial Bridge over the Potomac River, east to Capitol Hill, imposingly crowned by the domed Capitol. Not quite halfway between the Lincoln Memorial and the Capitol, on a slight eminence, rises the mighty obelisk of the Washington Monument. Here is a transverse axis from which the White House can be seen across the Ellipse on one side, and the gleaming white temple of the Jefferson Memorial, across the Tidal Basin, on the other.

### Entertainment in Washington

Summer in Washington offers the Watergate Concerts just off the District of Columbia end of the Memorial Bridge. Enhanced by the rippling waters of the Potomac, the barge theatre offers concerts by the famed Service bands of Army, Navy, Marines and Air Force, open without charge to the public, and other forms of entertainment at popular prices. Farther into the northwest section of the city, the summer also offers topflight entertainment at the Carter Barron Amphitheatre, Washington's famed "Theatre Under the Stars."

The Capital City's attractions are many and varied throughout the year. Along the Mall, the Smithsonian Institution beckons, with its great roomfuls of historic treasures. The National Gallery of Art, with its renowned collections, the Museum of Natural History, and, on Capitol Hill, the Library of Congress, offer interest, as does the Folger-Shakespearean Library, and the Supreme

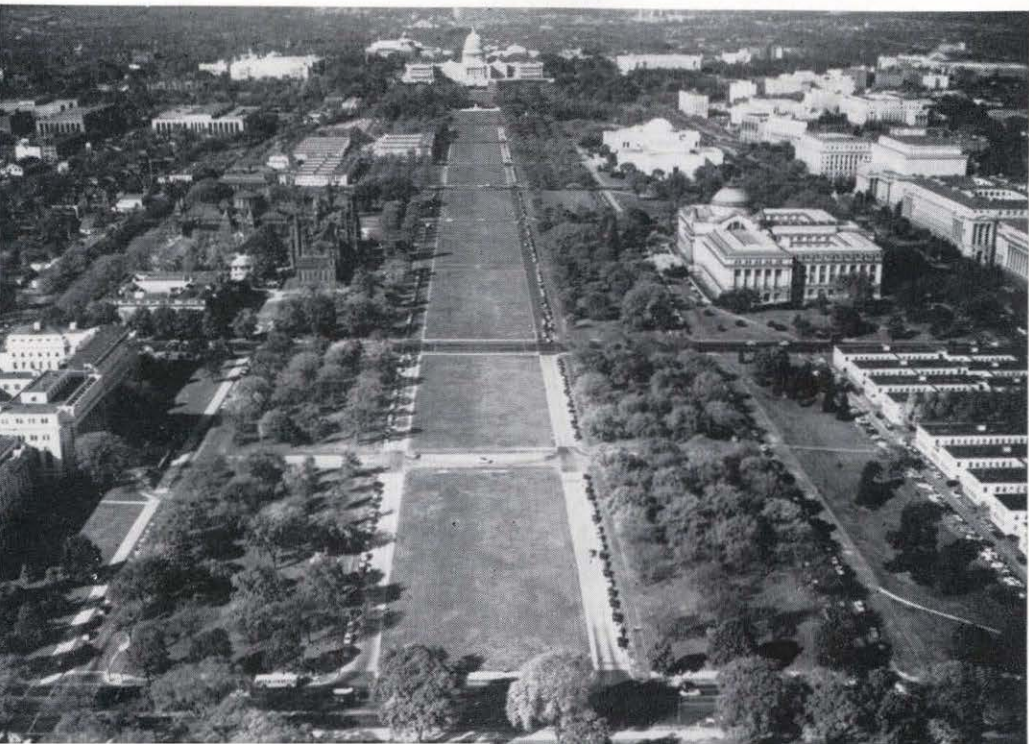
Court. Here, too, when the Congress is in session, the action in House and Senate provides much that is interesting, educational and entertaining for the visitor.

#### Varied Religious Facilities

Washington is a city which, within its welcome, does not forget the spiritual needs of its visitors. It contains many fine churches, of every faith. Many of these are of imposing and historic significance of themselves: the Franciscan Monastery, the almost completed Shrine of the Immaculate Conception which, when finished, will rank as one of the five greatest basilicas in the world, and the Islamic Mosque, one of two such edifices on the North American continent.

This, then, is the city that welcomes you in convention assembled. It is the crossroads of the world, the center of history in the making, of vital importance today as the world seeks a way to peace and the security of peace for all peoples. It is the city of stately buildings, broad, tree-shaded avenues and streets, beautifully green parkways. It is a haven for the traveler from abroad, and it is every American's other home town. It is the Nation's city, loved and honored for its eminence, an inspiring symbol to citizen and visitor of the dignity and vigor of American democratic government.

*Air View of the Mall, looking towards the U.S. Capitol Building*



## Introduction and History of the Congress

The World Congress of Gastroenterology was initiated by the International Society of Gastroenterology which was originally founded in Brussels on August 10, 1935, through the initiative of Dr. Georges Brohée. At this time the members of the organization were individual members. The Second International Congress was held in Paris, France, in September, 1937, and the Third Congress was to have been held in London, England, in July, 1940. Because of World War II, however, activities were suspended and the Congress was not held.

At the General Assembly in Paris, France, after the Second Congress of the International Society of Gastroenterology in September, 1937, Sir Arthur Hurst was elected President of the International Society of Gastroenterology and Dr. Gallart Mones of Barcelona, Spain, was chosen as the First Vice-President. Dr. Gallart Mones subsequently became President of the International Society of Gastroenterology and he called a General Assembly in Paris, France, on June 30, 1954. At that time the Assembly unanimously decided that the International Congress of Gastroenterology should in the future be a federation of National Societies rather than an organization consisting of individual memberships.

On that occasion it was likewise decided to hold the World Congress of Gastroenterology in the United States of America in 1958 and the American Gastroenterological Association was suggested as the host. The American Gastroenterological Association assumed this responsibility and formed a Central Committee with Dr. H. L. Bockus as its Chairman, and Dr. H. M. Pollard as Secretary General.

---

Scientific sessions of specialty groups related to the World Congress meeting in Washington during the week include:

American Gastroscopic Society, Shoreham Hotel, Saturday afternoon, May 24, 1958.

Gastroenterology Research Group, Shoreham Hotel, Thursday, afternoon, May 29, 1958.

American Association for the Study of Liver Diseases, Shoreham Hotel, Saturday afternoon, May 31, 1958.

American Gastroenterological Association, Sheraton Park Hotel, Friday and Saturday, May 30 and 31, 1958.

## GENERAL INFORMATION

---

### NOTICES

Watch the Bulletin Board in the center lobby near the main entrance for Congress program and related notices.

### TIME ZONE

Washington is on Eastern Standard Time during the winter months, but on Daylight Saving Time, which is one hour earlier than Eastern Standard, during the summer. Currently, the city is on Daylight Saving.

### POST OFFICE AND POSTAGE RATES

The Washington Post Office is located at North Capitol and G Streets, adjacent to the Union Station. A large branch post office is at 13th and Pennsylvania Avenue, N.W., with smaller branches in districts throughout the city. Postal rates are as follows:

	Regular Mail	Airmail	Postcards	
			Reg.	Air
United States, Canada and Mexico	3c ounce	6c ounce	2c	4c
South America	8c ounce	20c ounce		10c
Europe	8c ounce	15c ½ ounce	4c	10c
Australia, Africa, Middle East, Far East	8c ounce	25c ½ ounce		10c

### BANKING FACILITIES AND FOREIGN CURRENCY EXCHANGE

Please contact the assistant manager of the Sheraton Park Hotel.

### HOTEL PHYSICIAN

Please contact the hotel telephone operator.

### PETS

Pets are permitted. The owner, however, will be responsible.

### FIRST AID

In case of emergency please contact the Assistant Manager in the lobby.

### LOST AND FOUND DEPARTMENT

Please call the Housekeeper on extension No. 52.

### INTERPRETER

The Sheraton Park has an International Manager. He will be pleased to help in any situation. Ask operator for "International Manager."

### BULLETIN BOARD

Information and notices concerning the congress program will be available on the bulletin board in the main lobby.

### INFORMATION

Contact World Congress Registration desk in the main lobby.

## AMUSEMENT GUIDE

Legitimate theaters, cinema, sports arenas, concert halls and art galleries offer entertainment in its varied forms. Copies of the weekly "This Week in Washington," which lists all entertainment in the city, are available at hotel desks.

## TAXIS

A fast method of getting around Washington. Taxis are available at the front door at all times. Fare to downtown: one person 75c, Two persons \$1.00. Each additional person 20c more, up to five persons.

## BUSSES

Busses numbered L2 and L4 will take you to the terminal (13th and Pennsylvania Avenue) in the middle of the downtown shopping district. Use the same busses returning. It is about fifteen minutes ride. The fare is 20c per person each way.

## SALES TAX

The District of Columbia (Washington) imposes a 3 per cent tax on hotel accommodations, a 2 per cent tax on food and beverage bills over 50c, a 2 per cent tax on store and shop purchases. These taxes are added to all bills.

## WEATHER

Washington weather is pleasant throughout the year. The average summer temperature is 77 degrees, the winter averages 37 degrees. The average for spring is 55 degrees, and for the fall 56 degrees. Most of Washington's hotels are air conditioned, adding to the comfort of visitors. It is recommended that visitors bring raincoats and umbrellas.

## TIPPING

It is customary, for hotel and restaurant service, to tip approximately 15 per cent of the total bill rendered. The taxicab driver is usually tipped 10 per cent above the charge for his service, plus an extra amount if he is required to handle luggage. Hotel bellboys customarily receive from 15c to 25c per piece of luggage. In general, practices for tipping in Washington are the same as in other comparable cities.

## RESTAURANTS—Good Eating in Washington

Washington is one of the United States' finest "eating" cities. It offers a large variety of fine restaurants and dining in the Nation's capital is a pleasant experience. There are many restaurants featuring every type of cuisine, Italian, French, German, Chinese, Latinamerican, Japanese, Middle Eastern, Scandinavian, Kosher, Sea food, Steaks, Chops, etc. There are quality restaurants to suit every budget. Many of the city's more noted restaurants provide dancing and entertainment after sundown. The best source of information on places to eat is the Restaurant section of your hotel room telephone directory, yellow pages.

## PHOTOGRAPHER

The official photographer for the Congress is Chase Studios, 19th and M Street, N.W., Washington, D.C.

## MAIL AND MESSAGES

Calls from outside will be handled by the hotel's telephone operators. Messages will be placed in your mail box at the main desk, and one copy tucked under the knocker of your room door. Messages for other congress participants may be left at the registration desk. Check your mail box daily.

## BARS AND BAR LAWS

Alcoholic beverages in the District of Columbia (Washington) can be purchased, by the drink, in licensed establishments from 10:00 a.m. to 2:00 a.m. daily, Monday through Friday, 10:00 a.m. to 12 midnight on Saturday. Beer and light wine only can be purchased on Sunday and these only from 1:00 p.m. to 12 midnight. District law requires that patrons must be seated to be served. Bottled alcoholic beverages for room or home consumption can be purchased from the hotel daily except Sunday. Package stores in the city are open from 10:00 a.m. to 12:00 midnight Saturday. They are closed Sunday.

## MAP OF WASHINGTON

Maps of the entire District of Columbia can be obtained from the Congress Registration Desk.

## PARKING

Washington, as other U. S. cities, has an acute parking problem. If you are driving it is suggested that you inquire about parking at the Registration Desk. Parking lots are available in the downtown shopping area for temporary parking.

## RENTING AUTOMOBILES

This is the best way to see Washington if you do not have a car of your own. The Avis Rent-A-Car system has an office in the Sheraton Park Hotel. The Hertz Rental System main office is 1815 L Street, telephone NAional 8-5600.

## TOURS

See the section on tours, both local and post-congress, at the end of the program.

## TRAVEL

The official travel agent for the congress is the American Express Company, 65 Broadway, New York City, New York. The Washington office is located at 624 14th Street.

## SNACKS

Although the Sheraton Park does not have a snack bar which stays open late at night, there are several sandwich and short order eating places on Connecticut Avenue, a short walk from the hotel.

## LADIES' LOUNGE

The Madison Suite of the Sheraton Park Hotel has been reserved for the use of the wives and guests of the registrants. The ladies are cordially invited to use the Suite as a meeting place and social headquarters.

## BADGES

General Congress registrants wear a metal nameplate badge with a red, white and blue ribbon. Speakers have a blue ribbon and committee members wear a red ribbon. Ladies have a red, white and blue ribbon with a plastic name badge.

## DRESS

Dress during the World Congress is optional with the exception of the Congress Banquet, Tuesday evening, when formal dress is requested.

## HOSPITALITY DESK

Polly Pierson and Ruth Jones will supervise the Hospitality Desk in the main lobby of the Sheraton Park Hotel. They will be in charge of bus tour tickets and luncheon tickets and will be happy to assist all registrants with information and suggestions about what to do in Washington and how to get there.

## NEWS BULLETIN

A Congress News Bulletin will be issued Monday and Wednesday. Copies will be available at the Congress Registration Desk.

## INFORMATION ON REGISTRANTS

If you wish information concerning those in attendance, please inquire at the Congress Registration Desk.

## PRESS ROOM

Facilities for interviewing and general newspaper, radio, and TV coverage of the World Congress will be available in Wing C. The representative of the World Congress to work with communications media is Dr. Maurice Mensh.

## RELIGIOUS FACILITIES

Washington has religious facilities to satisfy individually most of the world's major religious faiths. It is a city of churches. The Washington Cathedral is one of the city's most beautiful buildings. The only Moslem Mosque in North America is located here. The Franciscan Monastery is an outstanding religious landmark in the city.

## CONGRESS HEADQUARTERS

Registration headquarters, information bureau, the technical and scientific exhibits, the general sessions and symposia will be held in the Sheraton Park Hotel. Additional meetings and concurrent sessions will be held in the Shoreham Hotel.

## CONGRESS INFORMATION

### HEADQUARTERS DIRECTORY

The Sheraton Park Hotel is the official Congress Headquarters. Information on meeting locations, Congress offices, officials, facilities, program, business, can be obtained from the registration desk.

### OFFICIAL WORLD CONGRESS LANGUAGES

English, French, German, and Spanish are the official languages of the World Congress. Simultaneous interpretation equipment will be available in Sheraton Hall to those who desire it.

**Simultaneous interpretation will be under the direction and supervision of Dr. Eduardo Orbe.**

### PROCEEDINGS

Proceedings will be published in a single volume, available by subscription during the Congress. Proceedings will also be published as a series in *Gastroenterology*, in the issues of July, August, September, and October, 1958. Inquire at Congress Registration Desk.

### SIMULTANEOUS INTERPRETATION—directions for use of equipment:

Each unit is a self-contained portable radio, capable of receiving the different language channels in use. Receivers will be supplied by attendants at the entrance of Sheraton Hall.

#### Instructions for use:

1. Remove headset from receiver. Place neckstrap over the head allowing receiver to rest on the chest. Place headphones on head.
2. To turn on, lift tab labelled "IBM" found on the top center of the receiver.
3. Select language turning knob labelled "Channel" to the number desired.

Channel 1 Speaker on floor (directly)

Channel 2 English

Channel 3 French

Channel 4 German

Channel 5 Spanish

Channel 6 not in use

Channel 7 not in use

When returning the unit to the attendant, members are requested to be sure that the receiver has been turned off and the earphones placed over the neckstrap in the same manner as when the units were handed out.

### SPEAKERS INFORMATION

All individuals appearing on the scientific program must have final manuscripts available in triplicate to hand to the secretary of that particular session at the time of his address.

### SLIDES

Speakers should leave their slides in the Speakers Bureau prior to the opening of their particular session, and are requested to pick them up immediately following their session.



# National and International Societies of Gastroenterology

## 1958

	<i>President</i>	<i>Secretary</i>
International Society of Gastroenterology	Professor F. Gallart Mones	Dr. A. L. Froehlich
Association des Sociétés Européennes et Méditerranéennes de Gastroentérologie	Dr. A. J. Ch. Haex	Dr. A. L. Froehlich
Interamerican Association of Gastroenterology	Dr. L. Falla A.	Dr. G. Siffert
Argentina	Dr. Pedro O. Bolo	Dr. J. Uriburu
Austria		Professor R. Boller
Belgium	Dr. C. Rahier	Dr. J. Massion
Gastro-Enterologische Colloquia	Professor A. Lacquet	Dr. O. Hoste
Bolivia		Dr. L. Gauma
Brazil	Professor C. Fraga	Dr. Geraldo Siffert
Bulgaria		Professor Tasho A. Tashev
Canada		
Gastrointestinal Section of Canadian Medical Association	Dr. R. D. McKenna	Dr. Robert MacDonald
Chile	Dr. Jacobo Lerner	Dr. E. Doerr Zavala
Colombia	Dr. A. Albornoz	Dr. Jorge R. Segura
Cuba	Dr. Orlando do los Heros	Dr. Carlos J. Sanz
Czechoslovakia	Professor K. Carsky	Dr. J. Masek
Denmark	Dr. Tage Christensen	Dr. Mogens Faber
Egypt		Professor M. A. Arafa
Finland		
Section of Internal Medicine	Docent E. Adlercreutz	Docent Max Siurala
France	Dr. J. Caroli	Dr. A. Varay
Germany	Professor H. Kalk	Dr. G. Martini
Great Britain	Professor C. F. W. Illingworth	Dr. W. A. Bourne
Greece	Professor E. Phocas	Dr. G. Voulpiotis
Hungary	Professor G. Hetényi	Professor L. Friedrich
Israel	Professor J. Kleeberg	Dr. D. Birnbaum
Italy	Professor A. Gasbarrini	Professor A. Bonadies

OFFICERS—NATIONAL AND INTERNATIONAL SOCIETIES, 1958

(continued)

	<i>President</i>	<i>Secretary</i>
Japan	Dr. Shinichi Kawashima	Professor Shingo Aoyama
Mexico	Dr. A. Ayala Gonzalez	Dr. Pedro Ramos
Morocco	Dr. Callandry	Dr. G. Liscia
Netherlands	Dr. A. J. Ch. Haex	Dr. H. J. N. Dekkers
Paraguay	Dr. Carlos A. Centurion	
Peru	Dr. Hector Colichon	Dr. G. M. Arevalo
Poland		Professor L. Plocker
Rumania	Professor N. Gh. Lupu	Dr. V. Prodesco
Spain	Professor H. G. Mogená	
Sweden	Professor E. Perman	Dr. Bengt J. E. Ihre
Switzerland	Dr. H. Kapp	Dr. H. Fahrländer
Tunisia		Dr. Sassi
Hawaii		
Hawaii Medical Association		Mr. Lee McCaslin
Turkey		Dr. Hadice Cevat
Uruguay	Professor A. G. Martinez P.	Dr. Julio Moretti
Venezuela	Dr. J. V. Paparcen	Dr. E. Candia C.
United States of America		
American Gastroenterological Association	*Dr. Mandred W. Comfort	Dr. Franz J. Ingelfinger
American Gastroscopic Society	Dr. C. J. Barborka	Dr. C. Wilmer Wirts
American Association for the Study of Liver Diseases	Dr. Hans Popper	Dr. Thomas Chalmers
Gastroenterology Research Group	Dr. Charles F. Code	Dr. E. Clinton Texter
Section of Gastroenterology and Proctology, American Medical Association	Dr. Everett D. Kiefer	Dr. W. H. Dearing
American College of Gastroenterology	Dr. C. Wilmer Wirts	Mr. Daniel Weiss

The above list is as nearly accurate and complete as possible at the time of going to press. We regret any errors or omissions.

\*Deceased August 7, 1957.

Acting President—Dr. C. J. Barborka.

# Committees of the World Congress of Gastroenterology

## CENTRAL COMMITTEE

Dr. H. L. Bockus, <i>Chairman</i>	Dr. G. G. McHardy
Dr. J. A. Bargaen, <i>Vice Chairman</i>	Dr. D. L. Wilbur
Dr. H. M. Pollard, <i>Secretary General</i>	Dr. S. M. Jordan
Dr. A. H. Aaron	Dr. W. L. Palmer
Dr. C. J. Barborka	

## FINANCE COMMITTEE

Dr. C. J. Barborka, <i>Chairman</i>	Dr. S. M. Jordan
Dr. G. G. McHardy, <i>Treasurer</i>	Dr. H. L. Thompson

## PUBLICITY AND COMMERCIAL EXHIBITS COMMITTEE

Dr. A. H. Aaron, <i>Chairman</i>	Dr. T. A. Johnson
Dr. J. A. Bargaen	Dr. W. F. Lipp
Dr. S. M. Jordan	

## COMMITTEE TO COOPERATE WITH WORLD MEDICAL ASSOCIATION

Dr. A. F. R. Andresen, *Chairman*

## COMMUNICATIONS COMMITTEE

Dr. C. J. Barborka, <i>Chairman</i>	Dr. T. S. Sappington, <i>Vice Chairman</i>
-------------------------------------	--------------------------------------------

## EDITORIAL BOARD FOR PROCEEDINGS

Dr. A. H. Aaron	Dr. G. G. McHardy
Dr. H. L. Bockus	Dr. S. M. Jordan
Dr. H. M. Pollard	Dr. F. J. Ingelfinger
Dr. C. J. Barborka	

## POST CONGRESS TOURS COMMITTEE

Dr. Hilton S. Read, Atlantic City, N.J., *Chairman*  
Dr. C. J. Barborka, Chicago, Illinois  
Dr. Thomas P. Almy, New York City, New York  
Dr. Lucien A. Gregg, Pittsburgh, Pennsylvania  
Dr. Emil Jobb, Seattle, Washington  
Dr. Sara M. Jordan, Boston, Massachusetts  
Dr. H. M. Pollard, Ann Arbor, Michigan  
Dr. Harry L. Segal, Rochester, New York  
Dr. Harold L. Thompson, Los Angeles, California  
Dr. Henry J. Tumen, Philadelphia, Pennsylvania  
Dr. Dwight L. Wilbur, San Francisco, California  
Dr. Eric E. Wollaeger, Rochester, Minnesota

## COMMITTEE ON SCIENTIFIC EXHIBITS AND MOTION PICTURES

Dr. G. G. McHardy, <i>Chairman</i>	Dr. D. F. Marion
Dr. R. D. McKenna, <i>Chairman</i>	Dr. C. O. Patterson
Dr. J. W. Baker	Dr. J. A. Rider
Dr. I. B. Brick	Dr. W. G. Sauer
Dr. P. J. Culver	Dr. A. Winkelstein

### LADIES' COMMITTEE

Mrs. H. L. Bockus, *Chairman*  
Mrs. H. M. Pollard, *Chairman*  
Mrs. C. J. Barborka

Mrs J. A Bargaen  
Mrs. G. G. McHardy

### SECRETARIAT

Miss Robin Cridland, *Organizing Secretary*  
Mr. Alan C. Davis, *Program Editor*  
Miss Ella A. Mahnken, *Secretary*

---

## Local Committees on Arrangements

Dr. P. D. Comanduras, *Chairman*  
Dr. T. S. Sappington, *Co-Chairman*

Dr. W. E. Clark  
Dr. M. Mensh  
Colonel B. H. Sullivan, Jr. USA  
Captain L. J. Pope, USN  
Dr. W. T. Gibb  
Dr. E. S. Gladsden  
Mrs. T. S. Sappington

Dr. M. W. Perry  
Dr. W. K. Billingsley  
Dr. F. A. Geier  
Dr. I. B. Brick  
Dr. E. W. Nicklas  
Dr. J. C. Sullivan  
Dr. H. A. Monat

### LADIES COMMITTEE

Mrs. T. S. Sappington, *Chairman*  
Mrs. W. K. Billingsley  
Mrs. P. D. Comanduras  
Mrs. W. T. Gibb

Mrs. M. Mensh  
Mrs. L. J. Pope  
Mrs. B. H. Sullivan

### COMMITTEE ON AUDITORIUM, LECTURES

Dr. I. B. Brick, *Chairman*  
Dr. G. E. Meerckrees  
Dr. C. W. Thompson  
Dr. E. T. Phelps  
Dr. C. E. Rath  
Dr. C. E. Law  
Dr. J. J. Hughes

Dr. J. R. Nugent  
Dr. H. C. Maganzini  
Dr. H. A. Bloomer  
Dr. B. C. Snyder  
Dr. C. E. Keegan  
Dr. J. F. Barr  
Dr. R. H. Gruver

### RECEPTION OF DELEGATES AND ESCORT COMMITTEE

Colonel B. H. Sullivan, Jr., USA, *Chairman*

Dr. J. F. Pessel  
Dr. Hans Popper  
Dr. Charles Flood  
Dr. José F. Pontes

Dr. Geraldo Siffert  
Dr. José M. de la Vega  
Dr. D. C. H. Sun  
Dr. B. D. Pimparker

### COMMITTEE ON MEDICAL TOURS

Captain L. J. Pope, MC, USN, *Chairman*  
VADM. W. T. Brown, USN, Ret.  
Dr. Floyd F. Daft, PHD  
Capt. G. F. Duffner, USN

Col. A. A. Hoffman, USAF  
Capt. H. E. Richardson, USN  
Capt. M. H. Silliphant, USA  
Col. B. H. Sullivan, Jr., USN

#### HOSPITALITY COMMITTEE

Dr. W. T. Gibb, *Chairman*                      Dr. F. D. Threadgill  
Dr. R. Young                                        Dr. J. R. Creer  
Dr. M. H. Friedman

#### COMMITTEE ON HOTELS

Dr. E. S. Gladsden, *Chairman*                      Dr. A. W. Danish  
Dr. A. B. Rosenbaum                              Dr. C. R. Hartman

#### COMMITTEE ON EMBASSIES

Dr. W. M. Perry, *Chairman*                      Dr. F. G. MacMurray  
Dr. H. H. Hawfield

#### COMMITTEE ON REGISTRATION

Dr. W. H. Ferguson, *Chairman*                      Dr. C. H. Harnsberger  
Dr. W. L. Hall                                      Dr. R. D. Whitley  
Dr. R. W. Painter                                  Dr. A. F. Castro  
Dr. B. G. Brown

#### COMMITTEE ON TRANSPORTATION

Dr. W. K. Billingsley, *Chairman*                      Dr. B. G. Brown  
Dr. C. W. Camalier, Jr.

#### BANQUET COMMITTEE

Dr. F. A. Geier, *Chairman*                          Dr. L. T. Brown  
Dr. R. V. Choisser, *Co-Chairman*                      Dr. C. S. White, Jr.  
Dr. W. A. Ballinger

#### COMMITTEE ON PAN-AMERICAN UNION

Dr. T. S. Sappington, *Chairman*                      Dr. A. W. Thompson  
Dr. H. H. Custis, Jr.

#### PUBLICITY COMMITTEE

Dr. M. Mensh, *Chairman*                              Dr. C. E. Wilson, Jr.  
Dr. E. A. Gould                                      Dr. C. D. Cooper

#### COMMITTEE ON PRINTING

Dr. J. C. Sullivan, *Chairman*                      Dr. R. W. Sjogren  
Dr. C. E. Woodson

#### COMMITTEE ON SHOREHAM NIGHT

Dr. E. W. Nicklas, *Chairman*                      Dr. R. M. Tilley, Jr.  
Dr. W. P. Baker                                      Dr. B. Miller

#### COMMITTEE ON INTERPRETERS

Dr. H. A. Monat, *Chairman*                          Dr. Z. Gondos  
Dr. H. J. Coutinho                                  Dr. B. E. Nunez  
Dr. H. Einstein                                      Dr. N. Paul

#### COMMITTEE ON INAUGURAL CEREMONIES

Dr. J. H. Epstein, *Chairman*                      Dr. K. Brown  
Dr. Henry Beye

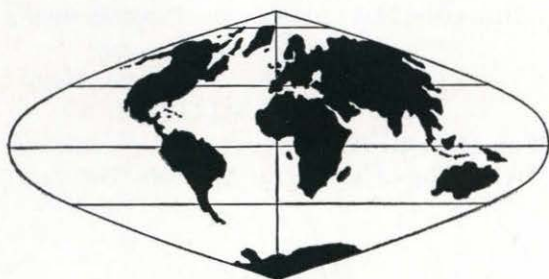
#### COMMITTEE ON SYMPHONY NIGHT

Dr. W. E. Clark, *Chairman*                          Dr. Hill Carter  
Dr. Robert Sjogren

## TABLE OF SCIENTIFIC SESSIONS

Monday, May 26 9:00 A.M.	Symposium Panel on PEPTIC ULCER: EPIDEMIOLOGY AND ETIOLOGY Sheraton Hall, Sheraton Park Hotel (Simultaneous Interpretation)					
Monday, May 26 2:00 P.M. Original Contributions	<i>Sheraton Hall Sheraton Park</i>	<i>Main Ballroom Shoreham Hotel</i>	<i>West Ballroom Shoreham Hotel</i>	<i>Terrace Banquet Shoreham Hotel</i>	<i>Park Room Shoreham Hotel</i>	<i>Continental Sheraton Park</i>
	Gastrointestinal Physiology (simultaneous interpretation)	Affections of the Pancreas and Biliary Tract	Peptic Ulcer	Intestinal Malabsorption	Nutritional and Physiological Aspects of Affec- tions of the Liver and Pancreas	Intestinal Infections and Infestations
Tuesday, May 27 9:00 A.M.	Symposium Panel on MALABSORPTION AND SPRUE-LIKE STATES Sheraton Hall, Sheraton Park Hotel (Simultaneous Interpretation)					
Tuesday, May 27 2:00 P.M.	Symposium Panel on NUTRITION AND ITS EFFECTS ON THE LIVER AND PANCREAS Sheraton Hall, Sheraton Park Hotel (Simultaneous Interpretation)					
Wednesday, May 28 9:00 A.M.	Symposium Panel on INTESTINAL INFECTIONS AND INFESTATIONS Sheraton Hall, Sheraton Park Hotel (Simultaneous Interpretation)					
Wednesday, May 28 2:00 P.M. Original Contributions	<i>Sheraton Hall Sheraton Park</i>	<i>Main Ballroom Shoreham Hotel</i>	<i>West Ballroom Shoreham Hotel</i>	<i>Terrace Banquet Shoreham Hotel</i>	<i>Park Room Shoreham Hotel</i>	<i>Continental Sheraton Park</i>
	Symposium on Education of Gastroentero- logic Internist (Simultaneous Interpretation)	Affections of the Liver; Clinical Aspects.	Affections of the Intestines. Pathological and Clinical Features	Gastric Carcinoma	Gastric Surgery and its Consequences	Upper Gastro- intestinal Hemor- rhage and Gastric Affections
Thursday, May 29 9:00 A.M.	Symposium Panel on CANCER OF THE STOMACH Sheraton Hall, Sheraton Park Hotel (Simultaneous Interpretation)					

There will be an intermission, each morning and afternoon of approximately 30 minutes, for coffee and viewing of exhibits.



## SCIENTIFIC PROGRAM SCHEDULE

WORLD CONGRESS OF GASTROENTEROLOGY  
Sheraton Park Hotel — Shoreham Hotel  
Washington D.C., U.S.A.  
May 25-31, 1958

### *INCLUDING MEETINGS OF:*

American Gastroenterological Association  
American Gastroscopic Society  
Gastroenterology Research Group  
American Association for the Study of Liver Diseases



# THE INAUGURAL CEREMONY

SUNDAY, MAY 25, 1958, 2:30 P.M.

SHERATON HALL, SHERATON PARK HOTEL

## INVOCATION

THE MOST REVEREND AMLETO G. CICOGNANI  
Archbishop of Laodicea, Apostolic Delegate

## MESSAGE

The President of the United States

### INTRODUCTORY REMARKS

H. L. BOCKUS

*Chairman, World Congress of Gastroenterology*

### INAUGURAL SPEAKERS

**Dr. Francisco Gallart Mones, M.D.,** Barcelona, Spain.

*President, International Society of Gastroenterology.*

THE ULCER PROBLEM—MEDICAL AND SOCIAL.

**Dr. T. C. Hunt, D.M., F.R.C.P.,**

*Senior Physician, St. Mary's Hospital, London, England.*

*President, International Congress of Gastroenterology and Fifth Meeting of L'Association des Sociétés Européennes et Méditerranéennes de Gastroentérologie, London, 1956.*

PROGRESS AND CHANGE IN GASTROENTEROLOGY.

**Dr. Benedicto Montenegro, M.S., F.A.C.S. (Hon).**

*Professor of Surgery, University of Sao Paulo Medical School, Brazil.*

*Past-President, Interamerican Gastroenterological Association.*

THE ROLE OF THE SURGEON IN THE DEVELOPMENT OF GASTROENTEROLOGY AS A SPECIALTY.

### ADDRESS

**David Sarnoff**

*Chairman of the Board, Radio Corporation of America.*

ELECTRONICS AND BIOLOGY.

Music by the United States Marine Band



## SYMPOSIUM PANEL

### Epidemiologic and Clinical Features of Peptic Ulcer Disease Throughout the World

Monday, May 26, at 9:00 A.M.

SHERATON HALL, SHERATON PARK HOTEL

(With Simultaneous Interpretation)

Chairman—GEORGE B. EUSTERMAN (Rochester, Minnesota)

Co-Chairman—RALPH COLP (New York, N. Y.)

Secretary—C. M. CARAVATI (Richmond, Virginia)

101\* Methods and Results in Treatment of Gastric and Duodenal Ulcer in Austria.

REINHOLD BOLLER (Austria)

102 Clinical Behavior Patterns of Peptic Ulcer Disease in Mexico.

J. M. DE LA VEGA (Mexico)

103 Observations on the Epidemiology of Peptic Ulcer in Great Britain with Special Reference to its Relationship with Smoking.

F. AVERY JONES (Great Britain)

104 Peptic Ulcer in the United States of America.

SARA M. JORDAN (U.S.A.)

105 Etiological Factors Influencing the Clinical Aspects, and in particular the sex and age distribution, of Gastro-Duodenal Ulcer.

A. LAMBLING, S. BONFILS, A. BURGER, B. BARATGIN (France)

106 Epidemiology and Clinical Aspects of Peptic Ulcer in Venezuela.

J. V. PARPARCEN, F. ACEVEDO GALLEGOS, ANTONIO ARAUJO, M. ANTONIO MATOS (Venezuela)

107 Epidemiology and Clinical Aspects of Peptic Ulcer in India.

PADMANABHA RAGHAVEN (India)

108 Epidemiology and Clinical Aspects of Peptic Ulcer in Brazil.

GERALDO SIFFERT (Brazil)

109 Epidemiology and Clinical Aspects of Peptic Ulcer in Switzerland.

BERNARD WISSMER, H. FAHRLANDER, E. HAFTER, W. HESS, A. WERTHEMANN (Switzerland)

110 Gastro-Duodenal Ulcer in High Altitudes (Peruvian Andes).

GERMAN GARRIDO-KLINGE, LUIS R. PENA (Peru)

#### Panel Discussion

Moderator—WALTER L. PALMER (Chicago, Illinois)

Summarizer—M. I. GROSSMAN (Los Angeles, California)

### ORIGINAL CONTRIBUTIONS

Monday, May 26 at 2:00 P.M.

SHERATON HALL, SHERATON PARK HOTEL

(With Simultaneous Interpretation)

#### The Pavlov Lecture

152 The Regulation of the Work of the Digestive Glands.

ACADEMICIAN KONSTANTINE M. BYKOV, Director, I. P. Pavlov Institute of Physiology, U.S.S.R. Academy of Sciences, Leningrad.

\* The same reference number is used for the abstract papers in the abstract book.

*Handwritten notes:*  
101\* also had 1st part  
102 gets more info  
103 multibio / special notes  
104  
105  
106  
107  
108  
109  
110  
Abstracts from studies gets more info  
European stock (grows)

*Handwritten:* Aug 1

*Handwritten:* Aug 1

Nov 2, 02/16  
Joe Johnson

## Gastrointestinal Physiology

- Chairman—FRANZ J. INGELFINGER (Boston, Massachusetts)  
 Co-Chairman—H. NECHELES (Chicago, Illinois)  
 Secretary—T. S. SAPPINGTON (Washington, D. C.)  
 Discussors—C. M. WILHELMLJ (Omaha, Nebraska), J. E. THOMAS (Los Angeles, California), SHINGO AOYAMA (Japan), K. S. KIM (Malaya)
- 153 Evaluation of the "Maximal Histamine Test" of Acid Gastric Secretion.  
 W. I. CARD (Great Britain)
- 154 What is Meant by Gastric Mucus? ✓  
 FRANKLIN HOLLANDER (U.S.A.)
- 155 The Effects of a Long-Acting Inhibitor of Gastric Secretion in Patients with Peptic Ulcer.  
 J. N. HUNT, A. H. DOUTHWAITE (Great Britain)
- 156 Radioactive Iodine and Gastric Secretion. ✓  
 JACOBO LEGNER, JOSE J. BARZELATTO, PATRICIO P. ROJAS (Chile)
- 157 Proof that Histamine is a Gastric Secretory Hormone. ✓  
 A. C. IVY, R. W. SCHAYER (U.S.A.)
- 158 Neutral-Red Transfer in the Stomach as a Measure of Mucosal Integrity.  
 V. VARRO, T. JAVOR (Hungary) ✓
- 159 Potentiation of Gastric Contractions by Brief Periods of 'Fast' Vagal Stimulation.  
 A. A. HARPER, C. KIDD, T. SCRATCHERD (Great Britain) *serotonin*
- 160 Action of Psychopharmacologic Agents on Interdigestive Gastric Secretion in the Rat. *cholinergics*  
 HARRY SHAY, DAVID C. H. SUN, MARGOT GRUENSTEIN (U.S.A.)
- 161 Effects of Antibiotics on Chemistry of Gastric Juices. ✓  
 CH. S. LIEBER, A. LEFEVRE (Belgium)
- 162 Fractionation of the Biologically Active Large Molecular Component of Human Gastric Content. ✓  
 STEWART WOLF, RANWEL CAPUTTO, VIRGINIA RICHMOND, W. O. SMITH (U.S.A.)
- 163 About the Production and Urinary Excretion of Proteolytic Enzymes of the Gastric Mucosa in the Fetus and Newborn.  
 HELMUT WAGNER (Germany)
- 164 Mechanism of Action of Morphine on the Small Intestine. ✓  
 E. E. DANIEL, W. H. SUTHERLAND, A. BOGOCH (Canada)
- 165 Pharmacodynamics of Colonic Motility.  
 S. KOHAN, L. COLOMBATO, M. ROYER (Argentina)
- 166 The Action of Curare on the Gallbladder and Oddi Musculature.  
 FRANCISCO RIVADENEYRA (Mexico)
- 167 Motor Disturbances of Esophagus. ✓  
 F. BIEL, S. LECANNELIER, J. WERLINGER, G. ASTE, J. MUNOZ (Chile)
- 168 Experimental Studies on the Psychosomatic Disorders of the Digestive System. ✓  
 YUJIRO IKEMI, MINORU AKAGI, CHISATO HIRAYAMA (Japan)

- 169 Comparison of 120 Estimations of Serum Mucoprotein and  $\alpha$ 1 Globulin in the Metabolic Diseases. ✓  
A. VARAY, M. MASSON (France)
- 170 Electrolyte Metabolism and Intestinal Function in Anorexia Nervosa.  
HEINRICH BERNING (Germany)

To be read if time permits.

- 171 The Effect of Prednisone on Gastric Secretion and Uropepsin Excretion in the Dog.  
THEODORE PLAINOS, A. J. PHILIPPU (Greece) Athens
- 172 Study on ~~Transfer~~ of Water and Salts through the Intestinal Walls.  
D. BIRNBAUM, F. BERGMANN, S. DICKSTEIN (Israel)
- 219 Some Metabolic Patterns of Lipogenesis.  
JOSEF MASEK, EDUARD KUHN (Czechoslovakia)
- 420 The Metabolism of the Mucous Membrane of the Alimentary Tracts and its Clinical Significance.  
MASASUKE MASUDA (Japan)

## ORIGINAL CONTRIBUTIONS

### Intestinal Infections and Infestations

Monday, May 26, at 2:00 P.M.

CONTINENTAL ROOM, SHERATON PARK HOTEL

- Chairman—DONOVAN C. BROWNE (New Orleans, Louisiana)  
Co-Chairman—Z. T. BERCOVITZ (New York, N. Y.)  
Secretary—JAMES L. BORLAND (Jacksonville, Florida)  
DISCUSSORS—H. DOONER (Chile), JEROME S. LEVY (Little Rock, Arkansas), E. CANDIA (Venezuela), J. LEGA S. (Colombia)
- 173 Effect of Tetracycline on Human Fecal Flora.  
A. DONOSO, L. PAREDES (Chile)
- 174 Recognition of Early Amoebiasis.  
M. A. ARAFA (Egypt) ✓
- 175 Scrapings of Rectal Mucosa in the Diagnosis of Intestinal Amebiasis.  
EDUARDO FREJOMIL, RAFAEL SILVEIRA (Cuba)
- 176 Chronic Amebiasis or Climatic Colitis.  
G. LISCIA, P. BERTIN (Morocco)
- 177 Advances in Therapy of Adult Intestinal Amebiasis.  
HERNAN ALESSANDRI, JACOBO FAIGUENBAUM, AMADOR NEGHME (Chile)
- 178 Treatment of Hepatic Amebiasis in 120 Cases.  
FRED SIGUIER, CL. BÉTOURNÉ, A. VARAY (France)
- 179 Schistosomiasis of the Colon. ✓  
MOUFID RAGHEB (Egypt)
- 180 Hepatic Cirrhosis in Schistosomiasis.  
HELIO PUCCI, SILVIO SANTOS C. (Brazil) ?

- 181 Hepato-Splenic Schistosomiasis.  
T. FIGUEIREDO MENDES (Brazil)
- 182 Surgery of Portal Hypertension in Schistosomiasis.  
F. L. RAFFUCCI, M. R. GARCIA P., LUIS A. DIAZ B. (Puerto Rico)
- 183 Intestinal Parasitosis in Paraguay, South America.  
GUSTAVO GONZALEZ, MIGUEL ANGEL MARTINEZ Y. (Paraguay)
- 184 Gnathostomiasis in Japan.  
ICHIRO MIYAZAKI (Japan)
- 185 Colitis Parasitaria in the Parasitic Infestation of the Gastrointestinal Tract.  
ZYGMUNT DZIECIOLOWSKI, RYSZARD KUZMICKI (Poland)

## ORIGINAL CONTRIBUTIONS

Monday, May 26, at 2:00 P.M.

MAIN BALLROOM, SHOREHAM HOTEL

### Affections of the Pancreas and Biliary Tract

- Chairman—RICHARD B. CATTELL (Boston, Massachusetts)  
Co-Chairman—MILFORD O. ROUSE (Dallas, Texas)  
Secretary—J. RUSSELL TWISS (New York, N. Y.)  
Discussors—CHARLES THOMPSON (Philadelphia, Pennsylvania),  
E. BARROSO (Mexico), J. VANDENBROUCKE (Belgium)
- 186 Functional Activity of Exocrine Human Pathologic Pancreas Studied Under the Effects of Some Drugs.  
PLINIO BOVE (Brazil)
- 187 Mechanism of Pancreatic Secretion of Electrolytes in Man.  
DAVID A. DREILING, HENRY D. JANOWITZ (U.S.A.)
- 188 Pancreatic Examination by Transverse Axial Stratigraphy.  
M. LEVRAT, M. GIRAUD, P. BRET, R. BRETTE (France)
- 189 Serum Enzyme Studies in Acute Pancreatitis.  
J. EDWARD BERK, GEN NIWAYAMA, ALEXANDER Z. LANE (U.S.A.)
- 190 Duodenal and Jejunal Biopsy in some Parasitic Diseases.  
JOSE RODRIGUES DA SILVA, J. A. ESCOSTEGUY, D. DE PAOLA, L. DIAS, A. J. ERTHAL (Brazil)
- 191 Chronic Recurrent Pancreatitis: Study of Sixty Cases Proved by Laparotomy.  
ABEL OLMOS C., D. ENRIQUEZ, S. SALAZAR (Chile)
- 192 Indications for Sphincterotomy of Oddi and Pancreatic Drainage.  
ANDRÉ CALAME (Switzerland)
- 193 Peroperative Manometric and Roentgenographic Examination of the Biliary Tract: Sixteen Years' Experience.  
PIERRE A. MALLET-GUY (France)
- 194 The Advantages of Peroperative Serial Cholangiography under Manometric Control in 520 Surgical Procedures on the Biliary Tract.  
ANDRÉ A. ARIANOFF, ETIENNE H. HENRARD (Belgium)
- 195 Studies on Experimental Production of Cholelithiasis.  
EUGENE G. CAIRA, D. R. WEBSTER, S. C. SKORYNA (Canada)

- 196 Biliary Lithiasis and Oxidation of Cholesterol by the Liver Dietetic Incidences.  
HENRI SARLES (France)
- 197 The Precipitation of Calcium Bilirubinate and/or Cholesterol Crystals in the Choledochus as an Entity in the Post-Cholecystectomy Syndrome.  
JOHN N. DAMBASSIS (Greece)
- 198 Hepatic Duct Syndrome.  
PABLO LUIS MIRIZZI (Argentina)
- 199 Gall Bladder Siphon Diseases.  
CH. DEBRAY, R. LAUMONIER, M. ROUX, R. LECANUET (France)
- 200 Unsuspected Cancer of Gall Bladder in Acute and Chronic Cholecystitis.  
RAUL A. MARCIAL R., RUBEN MEDINA (Puerto Rico)
- 201 A New Surgical Repair of the Biliary Tract.  
RAFAEL MUNOZ (Mexico)
- 202 Thirty-four Years' Experience in the Treatment of Stricture of the Common Bile Ducts: Report of 375 Cases.  
WALTMAN WALTERS (U.S.A.)
- 203 Indications for Therapy with Pancreatic Enzymes in Surgery.  
T. LINDENSCHMIDT (Germany)
- To be read if time permits.**
- 428 Effects of an Anti-Spasmotic Cholecystokinetic Agent, R. 253, on the Bile, Radiology and Radiomanometry.  
A. CHARBONNIER (France)

## ORIGINAL CONTRIBUTIONS

Monday, May 26, at 2:00 P.M.

WEST BALLROOM, SHOREHAM HOTEL

### Peptic Ulcer: Epidemiology and Etiology

Chairman—J. B. KIRSNER (Chicago)

Co-Chairman—C. A. FLOOD (New York, N. Y.)

Secretary—B. H. SULLIVAN, JR. (Washington, D. C.)

DISCUSSORS—A. H. WIEBENGA (Netherlands), I. VELEZ ESCOBAR (Colombia), B. BROOKE (Great Britain), RICHARD D. TONKIN (Great Britain)

205 Ten Year Follow Up of So Called Pseudo Ulcer Patients and True Peptic Ulcer.

A. BARFRED (Denmark)

206 Relation Between Hemorrhage in Peptic Ulcer and Meteorologic Factors.

J. KLEEBERG, D. ASHBEL (Israel)

207 Special Aspects of Peptic Ulcer Disease in the Middle East.

DACCAK MUNZER (Syria)

208 Incidence of Peptic Ulcer in Town and Country.

C. N. PULVERTAFT (Great Britain)

209 Regional Differences in the Autopsy Incidence of Chronic Peptic Ulcer in England and Scotland in 1956.

GEOFFREY WATKINSON (Great Britain)

- 210 Clinical Observations on Peptic Ulcer in Japan.  
TOSHIO KUROKAWA (Japan)
- 211 Incidence of Peptic Ulcer and Gastric Cancer in Bombay.  
F. P. ANTIA (India)
- 212 Hereditary Factor in Peptic Ulcer.  
J. J. DUBARRY, CH. PISOT, J. DUHAMEL (France)
- 213 Cerebral Lesions as a Cause of Peptic Ulceration.  
JØRGEN B. DALGAARD (Norway)
- 214 Chronic Gastric Ulcer: ABO Blood Groups, Site and Sex.  
B. P. BILLINGTON (Australia)
- 215 Present Status of Endocrine Influences upon the Stomach and their Relationship to Peptic Ulcer Disease.  
SEYMOUR J. GRAY (U.S.A.)
- 216 Radiologic Contributions to the Relationship of Peptic Ulcer to Adrenal Function.  
M. FOTI (Hungary)
- 217 Sympathetic Innervation in Peptic Ulcer.  
A. DE SOUSA PEREIRA (Portugal)
- 218 Pancreatic Endocrine Function and Peptic Ulceration.  
ROBERT M. ZOLLINGER, DAN W. ELLIOTT (U.S.A.)
- 221 Some Investigations of 23,788 Patients with Gastric and Duodenal Ulcer in Bulgaria.  
R. ZOLOFF (Bulgaria)
- To be read if time permits.
- 220 Gastric Ulcer: Some Indestructible Misconceptions.  
WILLIAM H. BACHRACH (U.S.A.)

## ORIGINAL CONTRIBUTIONS

Monday, May 26, at 2:00 P.M.

TERRACE BANQUET ROOM, SHOREHAM HOTEL

### Intestinal Malabsorption

Chairman—J. M. RUFFIN (Durham, North Carolina)

Co-Chairman—CHARLES L. BROWN (Philadelphia, Pennsylvania)

Secretary—T. P. ALMY (New York, N. Y.)

Discussors—DEWITT STETTEN, JR. (Bethesda, Maryland), RODRIGUEZ MOLINA (Puerto Rico), PERRY J. CULVER (Boston, Massachusetts), ARTHUR B. FRENCH (Ann Arbor, Michigan), L. J. POPE (Bethesda, Maryland)

222 The Celiac Syndrome.

DOROTHY H. ANDERSEN (U.S.A.)

223 The Bacterial Flora of the Small Intestine in Normal Children and Children with Malabsorption and Steatorrhea.

CHARLOTTE M. ANDERSON (Australia)

225 The Bile Components in Idiopathic Steatorrhea.

A. L. FROELICH (Belgium)

226 The Absorption of L-Methionine-S<sup>35</sup> and Oleic Acid-I<sup>131</sup> in Various Gastrointestinal Diseases (Peptic Ulcer, Regional Ileitis, Ulcerative Colitis).

DAVID J. SANDWEISS, STANLEY H. LEVY, RAYMOND A. GAGLIARDI, HOWARD H. FEIGELSON (U.S.A.)

- 227 Mechanism of Absorption and Excretion of Radioactive Labeled Fat.  
C. WILMER WIRTS, FRANZ GOLDSTEIN, FRANCO R. CALARESCU, SIMON KRAMER, JOSEPH P. CONCANNON (U.S.A.)
- 228 Physiological Significance of Fat Fractions of the Stool.  
G. SOTGIU (Italy)
- \* 229 Relation of Small Bowel Resection to Nutrition in Man. *add my work*  
M. H. KALSER, J. L. A ROTH, H. TUMEN, T. JOHNSON, H. L. BOCKUS (U.S.A.)
- 230 Histological and Psychological Findings in Idiopathic Steatorrhoea and Sprue.  
J. W. PAULLEY (Great Britain)
- 231 The Role of Liver Disease in the Malabsorption Syndrome.  
MARTIN SELER KLECKNER JR. (U.S.A.)
- 232 Sprue Syndrome with Very Large Dilatation of the Small Bowel.  
CARLOS M. RAMIREZ B. (Paraguay)
- 234 Malabsorption and Sprue-like Syndrome.  
G. MARTINEZ P. (Uruguay)
- 235 Intestinal Vitamin B<sub>12</sub> Absorption, its Structure Specificity and Influence by Augmenting or Inhibiting Factors.  
H. C. HEINRICH (Germany)
- 237 Some Effects of Too Rapid Reduction in Weight.  
BURRILL B. CROHN (U.S.A.)
- 238 The Pathogenesis of B<sub>12</sub> and Folic Acid Deficiency in Idiopathic Steatorrhoea.  
D. L. MOLLIN, C. C. BOOTH, I. CHANARIN (Great Britain)

## ORIGINAL CONTRIBUTIONS

Monday, May 26, at 2:00 P.M.

PARK ROOM, SHOREHAM HOTEL

### Nutritional and Physiological Aspects of Affections of the Liver and Pancreas

- Chairman—CECIL J. WATSON (Minneapolis, Minnesota)
- Co-Chairman—JESSE L. BOLLMAN (Rochester, Minnesota)
- Secretary—IRWIN J. PINCUS (Philadelphia, Pennsylvania)
- Discussors—D SELIGSON (Philadelphia, Pennsylvania), E. KOPPISCH (Puerto Rico), A. KLOTZ (Kansas City, Missouri), J. STOKES (Philadelphia, Pennsylvania)
- 239 Determination of Enzyme Activities in the Human Liver.  
E. SCHMIDT, F. W. SCHMIDT (Germany)
- 240 A Study of the Enzyme Activities of Abnormal Human Liver Specimen Obtained by Needle Biopsy.  
TSUNEO YOSHIDA (Japan)
- 241 The Influence of the Enzymolytic Agents on Experimental Liver Necrosis in Rats by Torula Diet.  
A. RODRIGUEZ O., LORENZO GALINDO (Puerto Rico)
- 236 Further Observations on Venous-Occlusive Disease of the Liver in Jamaica.  
G. BRAS, K. L. STUART, D. M. BERRY, K. R. HILL, P. GYORGY (British West Indies)

- 242 The Fatty Liver, Deficiency in Choline and Experimental Hepatoma in the White Rat.  
E. LE BRETON (France)
- 421 Primary Carcinoma of the Liver in Thailand.  
V. VIRANUVATTI, C. S. SATAPANAKUL (Thailand)
- 243 Histochemical and Microchemical Study of the Hepatic Glycogen in Tissue Specimens obtained by Liver Puncture.  
ANIBAL CAUSA, RAFAEL PLASENCIA (Cuba)
- 244 Changes in Blood Coagulation in Hepatectomised Dogs, in Dogs intoxicated with Carbon Tetrachloride and in Patients with Liver Disease.  
CLEMENTINO FRAGA FILHO (Brazil)
- 245 The Influence of Physiologic Irritations on the Enteroportal Blood-flow in Man.  
L. DEMLING, R. GROMOTKA (Germany)
- 247 Chromatographic Blood Keto-Acids, their Significance in Liver Pathology. Identification of three new Keto-Acids.  
P. DE SCHEPPER (Belgium)
- 248 Effect of Cortisone upon the Experimental Nutritional Fat Liver.  
C. DARNAUD, Y. DENARD, G. MOREAU, R. VOISIN (France)
- 249 Malnutrition and its Effects through the Liver and Pancreas on the Thromboembolic Problem in Surgical Affections of the Abdomen.  
HENRI PASCHOUD (Switzerland)
- 250 Nutrition and its Hepatosplenic Enteric and Pancreatic Effects.  
E. OLIVER P., (Spain)
- 251 Influence of Nutrition on Atrophy of the Pancreas and the Production of Diastase and Lipase after Ligation of the Pancreatic Duct.  
M. M. FORELL (Germany)
- 252 Protein Deficiency Disease and Pancreatic Failure.  
PETER V. VEGHELYI (Hungary)
- 254 A Method for the Continuous Registration of Blood Circulation in the Liver under Physiologic Conditions.  
A. NEUMAYR (Austria)
- 255 Critical Study of the Normal and Pathological 'Ammonia' Content of the Blood.  
J. DE GROOTE (Belgium)

## SYMPOSIUM PANEL

Tuesday, May 27, at 9:00 A.M.

SHERATON HALL, SHERATON PARK HOTEL

(With Simultaneous Interpretation)

### Malabsorption Syndromes

Chairman—R. SUAREZ (Puerto Rico)

Co-Chairman—T. SPIES (Birmingham, Alabama)

Secretary—R. D. MCKENNA (Canada)

111 Clinical Behavior of Sprue in the United States.

E. E. WOLLAEGER, P. A. GREEN (U.S.A.)

112 Celiac Disease and Wheat Sensitivity.

H. A. WEIJERS, J. H. VAN DE KAMER (Netherlands)



- 113 The Clinical Picture of Tropical Sprue in Puerto Rico. ✓  
 F. HERNANDEZ MORALES (Puerto Rico)
- 114 Small Intestinal Biopsies in Non-Tropical Sprue. ✓  
 MARGOT SHINER, I. DONIACH (Great Britain)
- 115 Changes in Epidemiology and Clinical Behavior in the Sprue-Like States in the Past Three Decades in Cuba. ✓  
 FERNANDO MILANES (Cuba)
- 116 Clinical Experience with the Wheat Factor in Non-Tropical Sprue.  
 J. M. FRENCH, C. F. HAWKINS, W. T. COOKE (Great Britain)
- 117 Pathogenesis of the Malabsorption Syndrome. (20 minutes)  
 A. C. Frazer (Great Britain)
- 118 Pathological Findings in Jejunal Specimens Obtained by Peroral Intubation in Patients with Malabsorption.  
 C. E. BUTTERWORTH, JR., ENRIQUE PEREZ S. (U.S.A.) ✓
- 119 Malabsorption Syndrome in New York City: Observations in Puerto Ricans versus Non-Puerto Ricans. ✓  
 DAVID ADLERSBERG (U.S.A.) *good*
- 120 Studies on the Idiopathic Malabsorption Syndrome with the aid of Labeled Fats. *good*  
 ROLF BLOMSBRAND (Sweden)
- 233 The Mechanism of the Metabolic Repercussions in Sprue. *modif*  
 C. JIMINEZ D., C. MARINA, J. M. ROMEO (Spain)

#### Panel Discussion

Moderator—A. M. SNELL (Palto Alto, California)  
 Summarizer—CHESTER JONES (Boston, Massachusetts)

## SYMPOSIUM PANEL

Tuesday, May 27, at 2:00 P.M.

SHERATON HALL, SHERATON PARK HOTEL  
 (With Simultaneous Interpretation)

### Nutrition and Its Effect on the Liver and Pancreas

Chairman—D. L. WILBUR (San Francisco, California)  
 Co-Chairman—F. W. HOFFBAUER (Minneapolis, Minnesota)  
 Secretary—A. J. CUMMINS (Memphis, Tennessee)

- 122 The Lipotropic Factors.  
 CHARLES H. BEST, GEORGE WILGRAM, C. C. LUCAS (Canada)
- 123 On Alcoholic Etiology of Cirrhosis. .  
 J. CAROLI, G. PEQUIGNOT, C. JACOT, A. JACOT (France)
- 124 Nutrition and the Liver and Pancreas. *good*  
 CHARLES S. DAVIDSON (U.S.A.)
- 253 The Relationship between Primary Liver Cancer and Underlying Nutritional Factors.  
 CHARLES BERMAN (South Africa)
- 126 Epidemiological Aspects of Acute Hepatitis in Chile.  
 HECTOR DUCCI, RICARDO KATZ, M. VELASCO (Chile)
- 127 Changes in the Liver and Pancreas in Kwashiorkor with Reference to the Role of Antecedent Infections and Infestations. *Low protein intake*  
 NEVIN SCRIMSHAW, CARLOS TEJADA, GUILLERMO ARROYAVE, MOISES BEHAR (Guatemala)

- 128 Chronic Malnutrition and Liver Damage in Mexico.  
SALVADOR ZUBIRAN, BERNARDO SEPULVEDA (Mexico)
- 129 Chronic Neuropsychiatric Syndrome with Intolerance to Dietary Protein in Patients with Hepatic Cirrhosis.  
SHEILA SHERLOCK (Great Britain)
- 130 Malnutrition and Liver Enzymes.  
JOHN WATERLOW (British West Indies)
- 131 The Behavior of Liver and Pancreatic Disease as it relates to Nutrition in Australia.  
IAN J. WOOD (Australia)

**Panel Discussion**

Moderator—P. GYORGY (Philadelphia, Pennsylvania)  
Summarizer—R. M. KARK (Chicago, Illinois)

**SYMPOSIUM PANEL**

Wednesday, May 28, at 9:00 A.M.

SHERATON HALL, SHERATON PARK HOTEL  
(With Simultaneous Interpretation)

**Intestinal Infections and Infestations**

Chairman—LAUREANO FALLA A. (Cuba)  
Co-Chairman—D. F. MARION (Miami, Florida)  
Secretary—WADE VOLWILER (Seattle, Washington)

**(a) Intestinal Infections**

- 132 The Present Significance of Escherichia Coli and Viral Enteritis.  
ERWIN NETER (U.S.A.)
- 133 Dysentery in the Northern Countries and the Postdysenteric Colonic Syndrome.  
NANNA SVARTZ (Sweden)
- 134 Epidemiology and Classification of Bacterial Intestinal Infections.  
JOAN TAYLOR (Great Britain)
- 135 Studies on Postantibiotic Microscopic Enteritis and on Pseudomembranous Enteritis.  
WILLIAM H. DEARING (U.S.A.)

**Panel Discussion**

Moderator—CHARLES JONES (Williamson, W. Virginia)  
Summarizer—WILLIAM EWING (Chamblee, Georgia)

**(b) Intestinal Infestations**

- 136 Epidemiology, Diagnosis and Treatment of Intestinal Helminthiases in Families of Ward Siloé, Cali, Colombia.  
ERNEST CARROLL FAUST (Colombia)
- 137 Epidemiologic Features of Amebiasis in Cuba.  
JOSE G. BASNUEVO (Cuba)
- 138 Laboratory Regimens for Diagnosis of Intestinal Amebiasis by Gastroenterologists.  
M. M. BROOKE (U.S.A.)
- 139 Intestinal Amebiasis: Its Clinical Importance.  
R. ARMAS CRUZ, OSCAR PERALTA, JOSE M. FUENZALIDA, ESTEBAN PARROCHIA, FERNANDO RUFIN, JORGE ARTIGAS (Chile)

- 140 The Factors Influencing Amebic Pathogenicity.  
R. ELSDON-DEW (South Africa)

**Panel Discussion**

- Moderator—G. G. McHARDY (New Orleans, Louisiana)  
Summarizer—WILLIAM W. FRYE (New Orleans, Louisiana)

**SYMPOSIUM PANEL**

Wednesday, May 28, at 2:00 P.M.

SHERATON HALL, SHERATON PARK HOTEL

(With Simultaneous Interpretation)

**Education of the Gastroenterologic Internist with  
Particular Emphasis on the Future in this Field of  
Medicine**

- Chairman—T. GRIER MILLER (Philadelphia, Pennsylvania)  
Co-Chairman—J. C. TIDMARSH (McGill University, Montreal,  
Canada)  
Secretary—MAURICE MENSCH (Washington, D. C.)
- 257 The Pursuit of Advanced Education by Physicians.  
VICTOR JOHNSON (Rochester, Minnesota)
- 258 Basic Science Training and its Correlation with Clinical Teaching.  
GEORGE B. KOELLE (Philadelphia, Pennsylvania)
- 259 The Role of the Graduate School of Medicine in the Training of  
the Gastroenterologic Internist.  
H. A. TOWSLEY (Ann Arbor, Michigan)
- 260 Training Methods in Internal Medicine with Special Attention to  
Gastroenterology in Mexico.  
RAOUL FOURNIER V. (Mexico)
- 261 Residency Training Programs, Strength and Weaknesses.  
JOHN MATEER (Detroit, Michigan)
- 262 A Critique of Methods and Facilities as seen by the Subspecialty  
Committee of the American Board of Internal Medicine.  
LOWELL SNORF (Chicago, Illinois)
- 263 The Role of Research in the Training of the Gastroenterologic In-  
ternist.  
THEODORE L. ALTHAUSEN (San Francisco, California)
- 423 Gastroenterology in Great Britain: Its Present Day Problems.  
HAROLD W. RODGERS (Northern Ireland)
- 264 Postgraduate Training in Gastroenterology from the Standpoint of  
the Active Practitioner.  
A. H. AARON (Buffalo, New York)
- 422 Gastroenterology in Switzerland: Its Development and Present Day  
Situation.  
H. KAPP (Switzerland)
- 265 The Role of Federal Agencies in Strengthening Training Programs  
for Foreign Physicians.  
HOWARD M. KLINE (Bethesda, Maryland)

424 The Role of the Federal Government in Education and Research in Gastroenterology.

THE HON. JOHN E. FOGARTY, M.C. (Washington, D.C.)

266 The Role of the Privately Endowed Foundation in the Training of Physicians from Foreign Countries.

DETLEV BRONK (New York, N.Y.)

### Panel Discussion

Moderator—H. L. BOCKUS (Philadelphia, Pennsylvania)

Panelists—Physicians taking part in the Symposium on Education of the Gastroenterologic Internist.



## ORIGINAL CONTRIBUTIONS

Wednesday, May 28, at 2:00 P.M.

CONTINENTAL ROOM, SHERATON PARK HOTEL

### Upper Gastrointestinal Hemorrhage and Gastric Affections (Clinical)

Chairman—C. J. BARBORKA (Chicago, Illinois)

Co-Chairman—A. F. R. ANDRESEN (Brooklyn, N. Y.)

Secretary—CECIL O. PATTERSON (Dallas, Texas)

Discussors—H. L. THOMPSON (Los Angeles, California), THOMAS E. MACHELLA (Philadelphia, Pennsylvania), I. B. BRICK (Washington, D. C.)

267 Experimental Data on the Pathogenesis of Gastric Hemorrhage. ✓

ISTVAN CSILLAG, HARRY JELLINEK (Hungary)

268 Gastrointestinal Bleeding—in Some Rare Diseases with Pathognomonic Skin Lesions. ✓

WILLIAM BENNETT BEAN (U.S.A.)

269 Recurrent Haematemesis due to Pseudoxanthoma Elasticum (Grönblad-Strandberg Syndrome).

HAROLD C. EDWARDS (Great Britain)

270 Treatment of Patients with Large Gastric Hemorrhage by Blood Transfusions, Simple Psychotherapy, Free Choice of Diet and, if necessary, Partial Gastrectomy.

J. J. GROEN, A. H. J. BOERRIGTER (Netherlands)

271 Treatment of Hemorrhage of Gastric and Duodenal Ulcer.

JOSEF BOGUSZ (Poland)

272 Pain Mechanism in Duodenal Ulcer: Its Relation to Gastric Emptying. ✓

H. J. N. DEKKERS, J. W. TJEENK WILLINK (Netherlands)

273 The So-Called Activity of Ulcer Disease.

GEZA HETENYI (Hungary)

274 The Pyloric Antrum and Peptic Ulceration.

A. W. KAY (Great Britain)

275 Studies on Etiology and Therapy of Peptic Ulcer.

ASHER WINKELSTEIN (U.S.A.)

276 Treatment of Gastroduodenal Ulcers by Pre-frontal Coagulation.

ROGER CATTAN, P. FRUMUSAN, M. BUCAILLE (France)

*Sustigen*

- 277 New Data Relating to the Liquiritia Treatment of Ulcer Disease.  
L. FRIEDRICH, B. LASZLO, ERZSEBET NAGY (Hungary)
- 278 Sleep Therapy in Peptic Ulcer with Studies on Metabolic Balance.  
JAN ROGUSKI (Poland)
- 279 Comparative Investigations on Various Therapeutic Methods in Gastroduodenal Ulcer.  
TASHO A. TASHEV (Bulgaria)
- 284 Double Blind Control in Hospital Treatment of Peptic Ulcer.  
BENGT J. E. IHRE (Sweden)
- 280 Radiologic Problems in Hiatal Hernia.  
ERNST HAFTER (Switzerland)
- 281 Cardioesophageal Insufficiency.  
CARLOS J. SANZ, ROLANDO SOLER (Cuba)
- 282 Chronic Gastritis.  
AGR. CANDIDO MUNOZ M. (Uruguay)
- 283 Human Gastric Lesions Occurring During Treatment with Corticoids.  
MARCEL CACHIN, MICHEL CONTE (France)

## ORIGINAL CONTRIBUTIONS

Wednesday, May 28, at 2:00 P.M.

MAIN BALLROOM, SHOREHAM HOTEL

### Affections of the Liver: Clinical Aspects

- Chairman—H. MARVIN POLLARD (Ann Arbor, Michigan)
- Co-Chairman—F. M. HANGER (New York, N. Y.)
- Secretary—J. R. NEEFE (St. Petersburg, Florida)
- Discussors—H. TUMEN (Philadelphia, Pennsylvania), A. J. PATEK, JR. (New York, N. Y.), HANS POPPER (New York, N. Y.), R. R. LINTON (Boston, Massachusetts), T. E. USER (Turkey), W. P. HAVENS (Philadelphia, Pennsylvania)
- 285 Review of Hepatic Disease seen in Northern Ireland.  
HAROLD W. RODGERS, DESMOND A. D. MONTGOMERY, JAMES GIBSON (Northern Ireland)
- 286 Serum Proteins by Paper Electrophoresis in Hepatobiliary Disease.  
RENÉ A. ALBACETE, VICENTE ANIDO, LAUREANO FALLA, ORESTES REDONDO (Cuba)
- 287 Cirrhosis of the Liver in Hereditary Hemorrhagic Telangiectasia.  
G. A. MARTINI (Germany)
- 288 Circulation of Cirrhotic Liver: The Hepatic Architecture in Cardiac Cirrhosis and the Incidence of Hepatoma in Liver Cirrhosis in Japan.  
HIDEO UEDA (Japan)
- 289 Hemodynamic Aspects of the Administration of Human Salt Poor Albumin in Patients with Cirrhosis of the Liver and Ascites.  
A. WEEKE (Netherlands)
- 290 Study of Normal and Pathological Liver Cytology using a Small Caliber Needle.  
HECTOR ORREGO M., J. ESPINOZA, CARLOS MEZA, ALEJANDRO NIJAMKIN (Chile)

- 291 Clinical Value of Needle Biopsy of the Liver.  
LEON SCHIFF (U.S.A.)
- 292 Annulation of Respiratory Shifts of the Liver or Spleen through Anaesthesia of the Phrenic to facilitate the Punch Biopsy of the Liver: the Spleno-Portography and the Percutaneous Transhepatic Cholangiography.  
B. VARELA F., G. BERTONI, E. PEREZ F. (Uruguay)
- 293 Portal Hypertension of Splenic Origin.  
MARIO ARCOS P. (Uruguay)
- 294 Hepatic Abscess.  
ARTURO PINEDA (Colombia)
- 295 Results of Strict Low Sodium Diet in Treatment of Hepatic Cirrhosis with Ascites.  
J. M. ORELLANA A., E. DOERR Z., A. GONZALEZ R. (Chile)
- 296 Treatment of Ascitic Hepatic Cirrhosis with Large Doses of Testosterone Propionate.  
MARIO GIROLAMI (Italy)
- 297 Viral Hepatitis in the Dominican Republic.  
AULIO R. BREA (Dominican Republic)
- 298 Viral Hepatitis in the Aged and its Evaluation.  
G. DOMINICI (Italy)
- 299 The Cholestatic Form of Viral Hepatitis: Experiences with Viral Hepatitis at Brooke Army Hospital during the years of 1951-1953.  
I. N. DUBIN, B. H. SULLIVAN, JR., P. C. LEGOLVAN, L. C. MURPHY (U.S.A)
- 300 Prognosis of Infective Hepatitis  
E. R. CULLINAN, R. C. KING, J. S. RIVERS (Great Britain)
- 301 The Significance of Alterations in Serum Enzymes in the Diagnosis of Icteric and Non-Icteric Hepatic Disease.  
FELIX WROBLEWSKI (U.S.A.)
- To be read if time permits.**
- 302 One Second Needle Biopsy of the Liver.  
GIORGIO MENGHINI (Italy)
- 303 Remarks on the Treatment of Hepatic Coma.  
EGMONT WILDHIRT (Germany)
- 304 Nutritional Aspects of the Relation between the Liver and Arteriosclerosis.  
M. MESSINI (Italy)
- 256 New Method for the Determination of the Size of the Liver and Spleen.  
WILLIAM NIMEH (Lebanon)

## ORIGINAL CONTRIBUTIONS

Wednesday, May 28, at 2:00 P.M.

WEST BALLROOM, SHOREHAM HOTEL

### Affections of the Intestines: Pathologic and Clinical Features

Chairman—J. A. BARGEN (Rochester, Minnesota)

Co-Chairman—JOHN TILDEN HOWARD (Baltimore, Maryland)

Secretary—P. D. COMANDURAS (Washington, D. C.)

Discussors—J. H. GARLOCK (New York, N. Y.), NORBERT STAPLER (Argentina) J. F. PESSEL (Trenton, New Jersey), M. PELAEZ C. (Mexico)

305 Duodenal Biopsies by Aspiration.

M. ROYER, L. BIEMPICA, E. CABANNE, M. RAPPAPORT (Argentina)

306 Experiences with Small Bowel Biopsy and Correlation with Histological Enzyme Determinations.

ROBERT J. BOLT, H. MARVIN POLLARD, LUDOVICI STANDAERT (U.S.A.)

307 The Pathogenesis of Whipple's Disease Investigated in Animal Experiments.

RUDOLF W. AMMANN (Switzerland)

308 Massive Intestinal Resection and the Loop Syndrome.

W. P. U. JACKSON (South Africa)

309 Potassium Depletion following Self-Induced Diarrhea and Vomiting, treated by Prolonged Psychotherapy.

ROBERT M. KARK, VICTOR E. POLLAK, GLENN W. FLAGG, ROBERT C. MUEHRCKE (U.S.A.)

310 Follicular Terminal Ileitis.

P. HILLEMAND, E. CHERIGIE (France)

311 The Terminal Ileal Loop in Tuberculous Patients.

CARLOS A. ESTAPE (Uruguay)

312 Volvulus of the Colon.

MANUEL RIVEROS, SILVIO DIAZ E. (Paraguay)

~~313 On the Histopathology of Chronic Ulcerative Colitis and its Pathogenetic Implications.~~

MOSHE B. GOLDGRABER, JOSEPH B. KIRSNER, WALTER L. PALMER (U.S.A.)

314 Ulcerative Colitis: A Pathologic Study of 152 Surgical Specimens.

GEORGE LUMB (Great Britain)

315 Ulcerative Colitis in Puerto Rico.

RAMON SIFRE, CARLOS BERTRAN, JOSE A. DE JESUS, F. HERNANDEZ M. (Puerto Rico)

316 Clinical Studies on Ulcerative Colitis and its Related Diseases in Japan.

FUJIO MATSUNAGA (Japan)

317 Treatment of Ulcerative Colitis with Local Hydrocortisone.

S. C. TRUELOVE (Great Britain)

318 New Concepts in Medical and Surgical Therapy of Ulcerative Colitis.

HENRY W. CAVE, Z. T. BERCOVITZ (U.S.A.)

319 Pneumatosis Intestinalis.

M. NACI AYRAL, MUZEYYEN COKDEGERLI (Turkey)

320 Indications for the Surgical Management of Diverticular Disease of the Colon.

HERBERT R. HAWTHORNE, ALFRED S. FROBES (U.S.A.)

321 Rectal Polyposis. 100 Cases.

JORGE DIEZ C., G. AREVALO, O. ESTREMADOYRO (Petu)

**To be read if time permits.**

322 Therapy of Ulcerative Recto-Sigmoiditis.

A. FRANCAVIGLIA (Italy)

## ORIGINAL CONTRIBUTIONS

Wednesday, May 28, at 2:00 P.M.  
TERRACE BANQUET ROOM, SHOREHAM HOTEL

### Gastric Carcinoma

- Chairman—LOWELL T. COGGESHALL (Chicago, Illinois)  
Co-Chairman—CINTRO DE PRADO (Brazil)  
Secretary—W. F. LIPP (Buffalo, N. Y.)  
Discussors—GEORGE CRILE, JR. (Cleveland, Ohio), S. REIMAN (Philadelphia, Pennsylvania), F. J. HODGES (Ann Arbor, Michigan), E. B. BENEDICT (Boston, Massachusetts), W. M. HAENZEL (Bethesda, Maryland), R. SCHINDLER (Los Angeles, California), IVAN B. JOSE (Australia), JOSE JACOME (Bogota, Columbia)
- 323 Cancer of the Stomach: Accuracy of Diagnosis and Incidence in Denmark.  
L. C. GRANDJEAN (Denmark)
- 324 Biological Diagnosis of Gastric Cancer.  
HACHIRO SATO (Japan)
- 325 A Specific Biologic Activity of Stomach Juice from Stomach Cancer Patients (KIK Reaction).  
RUZO IWATSURU, ISAO KATO, KAICHIRO OGURA (Japan)
- 326 Paper Electrophoretic Analysis of Gastric Juice in Gastric Anacidity.  
Gastric Atrophy and Cancer of the Stomach.  
GEORGE B. JERZY GLASS, LOUKIA STEPHANSON-LIOUNIS, MARILYN RICH, SALLIE E. MITCHELL (U.S.A.)
- 327 Exfoliative Cytology of the Digestive System.  
MARCOS FISCHMAN, GUILLERMO TERZANO (Argentina)
- 328 Five Years of Cytologic Diagnosis of Gastric Cancer by "Exfoliative Biopsy."  
V. CABRE FIOL, R. OLO GARCIA, F. VILARDELL (Spain)
- 329 Diagnosis of Early Cancer of the Stomach in Ambulatory Condition.  
E. SALIT-ALEKSANDROWICZ (Poland)
- 330 Malignant Transformations Observed in Benign Stomach Tumors.  
HENRY VIDAL C. (Spain)
- 331 The Gastric Cancer of Small Size: A Clinical Study.  
H. KAPP, L. ECKMANN (Switzerland)
- 332 Contributions to the Study of Gastric Cancer.  
ANTONIO BONADIES (Italy)
- 333 Relations of Clinical and Roentgenological Aspects of Stomach Cancer to Operative Risk and Post Operative Survival.  
J. J. BERNIER, S. BONFILS, P. DAUPHIN, A. LAMBLING (France)
- 334 Development of Gastric Cancer after Gastro-Enterostomy and Gastrectomy for Benign Ulcer.  
GEORGE PACK, ROBERT BANNER (U.S.A.)
- 335 Causes of Failure and their Possible Correction in the Management of Gastric Cancer.  
GORDON McNEER (U.S.A.)
- 336 Surgical Treatment of Gastric Carcinoma and its Results.  
CARLOS GONZALEZ B. (Spain)



- 337 Some Technical Problems Concerning Resection of the Upper Stomach for Carcinoma.

NORMAN C. TANNER (Great Britain)

## ORIGINAL CONTRIBUTIONS

Wednesday, May 28, at 2:00 P.M.

PARK ROOM, SHOREHAM HOTEL

### Gastric Surgery and Its Consequences

Chairman—L. K. FERGUSON (Philadelphia, Pennsylvania)

Co-Chairman—WARREN COLE (Chicago, Illinois)

Secretary—DAVID CAYER (Winston-Salem, N. Carolina)

Discussors—J. E. DUNPHY (Boston, Massachusetts), J. L. A. ROTH (Philadelphia, Pennsylvania), N. C. HIGHTOWER (Temple, Texas), H. J. HEIMLICH (New York, N. Y.), I. SCHOR (Argentina)

- 338 Peptic Ulcer: Its Surgical Management.

J. PI-FIGUERAS (Spain)

- 339 A Method of Proving Completeness of Nerve Section during Vagotomy.

HAROLD BURGE, J. R. VANE (Great Britain)

- 340 The Status of the Duodenal Ulcer Patient Five Years after Vagotomy-Pyloroplasty.

STEPHEN J. STEMPIEN, JOSEPH A. WEINBERG, HAROLD W. SEIFER, ANGELO DAGRADI (U.S.A.)

- 341 Experimental and Clinical Investigations of the Pathogenesis and Treatment of the Dumping Syndrome.

ERIK AMDRUP, J. BALSLEV JORGENSEN (Denmark)

- ~~342 Life with a Subtotal Gastrectomy.~~

~~EVERETT D. KIEFER (U.S.A.)~~

- 343 Disturbances of Motor and Secretory Function of the Operated Stomach.

T. SPARCHEZ, S. STOICHITA, S. TACORIAN, C. DULGHERU, S. CONSTANTINESCU, L. CLEJAN (Rumania)

- 344 A Sequel of Gastrectomy for Peptic Ulcer.

JOSE M. OVIEDO B. (Argentina)

- ~~345 Ability to Utilize Different kinds of Proteins and Fat by Persons who have undergone Partial Gastrectomy.~~

~~JOSE FERNANDES PONTES, DIRCEU PFUHL N., ALBERTO APARECIDA P., CANTIDIO DE MOURA C. (Brazil)~~

- 346 Management of the Post Gastrectomy Syndrome.

L. S. FALLIS, JAMES BARRON (U.S.A.)

- 347 Extended Total Gastrectomy and Reconstruction of a Gastric Reservoir.

CARLOS MONTEIRO (Brazil)

- ~~348 Intestinal Digestion and Absorption Following Gastric Resection.~~

~~GORAN LUNDH (Sweden)~~

# CALENDAR OF SCIENTIFIC

## Saturday, May 24

8:15 A.M. 17th Annual Meeting of American Gastroscopic Society, Shoreham Hotel

8:00 P.M. Annual Banquet, American Gastroscopic Society, Shoreham Hotel

## Sunday, May 25

2:30 P.M. World Congress of Gastroenterology  
INAUGURAL CEREMONY, Sheraton Hall

6:30 P.M. Grand Reception.  
Pan American Union Building

## Monday, May 26

2:30 P.M. Tour, Naval Medical Center, Bethesda  
Tea, Home of the Surgeon General, U.S.N.

8:30 P.M. Concert in Constitution Hall  
National Symphony Orchestra  
Howard University Choir

## Tuesday, May 27

9:00 A.M. Tours

- (1) Washington, D.C., Capitol and other Government Buildings
- (2) Bureau of Printing and Engraving, Smithsonian Institute

8:00 P.M. OFFICIAL BANQUET  
World Congress of Gastroenterology  
Sheraton Hall

## *Scientific*

### PLENARY SESSIONS

Monday, Tuesday,  
Thursday, at 9:00  
2:00 p.m.

### ORIGINAL CONTRIBUTIONS

Sheraton Park Hotel  
Shoreham Hotel  
Monday, Wednesday

There will be simultaneous sessions  
at all sessions held

## C AND SOCIAL EVENTS

### Sessions

Sheraton Hall

Wednesday,  
a.m. and Tuesday,

UTIONS

y, 2:00 p.m.

uous interpretation  
in Sheraton Hall.

### Wednesday, May 28

- 9:00 A.M. Tour, White House, Lee Mansion,  
Arlington Cemetery
- 12:15 P.M. Fashion Show and Luncheon, Shore-  
ham Hotel Terrace
- 5:00 P.M. International Society of Gastroenter-  
ology Business Meeting, Sheraton Hall
- 7:30 P.M. Cocktails, Dinner and Dancing, Shore-  
ham Hotel Terrace

### Thursday, May 29

- 2:00 P.M. Gastroenterology Research Group,  
Shoreham Hotel
- 2:00 P.M. Tours
- (1) Alexandria, Mount Vernon,  
Tea served at Woodlawn
  - (2) Alexandria, Gunston Hall,  
Tea served at Woodlawn
- 2:00 P.M. Tours of Medical Interest
- Evening—Visits to Embassies, Private Parties

### Friday, May 30

- 8:45 A.M. American Gastroenterological Associ-  
ation, Sheraton Hall, Sheraton Park Hotel
- 7:30 P.M. Cocktails, Continental Room
- 8:30 P.M. Annual Banquet of the American Gas-  
troenterological Association, Sheraton Hall

### Saturday, May 31

- 2:00 P.M. American Association for the Study of  
Liver Diseases. Shoreham Hotel

- 349 Nutrition, Absorption and Metabolism Following Total Gastrectomy.  
R. G. A. VAN WAYJEN, J. GROEN, P. J. KNYJER, A. F. WILLEBRANDS (Netherlands)
- 350 Functional Adaptation after Total Gastrectomy.  
E. LIMA B. (Portugal)
- 351 Economic Assessment of Gastrectomy.  
W. A. BOURNE (Great Britain)
- 352 Construction of a New Esophagus by means of the Transverse Colon.  
EDWIN BENEDITO MONTENEGRO, DAHER E. CUTAIT, MARIO RAMOS, MARIO FANGANIELLO, ERMETTIS FERRARINI, PLINIO DE MATTOS B., OSWALDO THOMAS WHATELY (Brazil)  
**To be read if time permits.**
- 353 Billroth I Resection in Duodenal Ulcer.  
HANS WILLENEGGER (Switzerland)

**Business Meeting  
of the  
International Society of Gastroenterology**  
Wednesday, May 28, at 5:00 P.M.  
SHERATON HALL, SHERATON PARK HOTEL

**SYMPOSIUM PANEL**  
Thursday, May 29, at 9:00 A.M.  
SHERATON HALL, SHERATON PARK HOTEL  
(With Simultaneous Interpretation)

**Gastric Carcinoma**

Chairman—RUSSELL S. BOLES (Philadelphia, Pennsylvania)

Co-Chairman—JOHN R. HELLER (Bethesda, Maryland)

Secretary—T. A. JOHNSON (Philadelphia, Pennsylvania)

142 Gastric Carcinoma: Epidemiology and Clinical Aspects as seen in Western Germany.

HANS HEINRICH BERG (Germany)

143 Incidence of Gastric Carcinoma in Denmark as compared with Other Countries.

JOHANNES CLEMMESEN (Denmark)

144 Evolution of Gastric Cancer.

RENÉ-A. GUTMANN (France) ✓ *go to see him*

145 Gastric Carcinoma in Belgium.

J. MAISIN, A. TUYNS, R. GOFFIN (Belgium)

146 Primarily Generalized Forms of Gastric Carcinoma.

H. G. MOGENA (Spain)

147 Factors Influencing the Surgical End Results in Gastric Carcinoma.

I. S. RAVDIN (U.S.A.)

~~148 Gastric Carcinoma: The Importance of X-Ray Examination.~~

~~LEO RIGLER (U.S.A.)~~

- 149 Experimental Gastric Carcinoma and So-Called Pre-Cancerous Lesions of the Stomach. *Says they can find circulating cancer cells in blood.*  
 HAROLD L. STEWART (U.S.A.) *② Does this occur in early cancer?*
- 151 Clinical Aspects of Gastric Carcinoma in Japan. *③ we need more quantitative terms in describing*  
 YUZO TAZAKI (Japan)

**Panel Discussion**

Moderator—W. HEUPER (Bethesda, Maryland)  
 Summarizer—GEORGE MOORE (Buffalo, N. Y.)

Expression of Appreciation to Participants,  
 Authors and Officers of Sessions and  
 International Societies.

H. M. POLLARD, *Secretary-General*

UNTIL WE MEET AGAIN

H. L. BOCKUS, *Chairman*

**ORIGINAL CONTRIBUTIONS  
 TO BE READ BY TITLE**

- The Pancreas and Liver in Kwashiorkor. *How long should you treat a patient & diet.*  
 J. N. P. DAVIES (East Africa)
- A Follow Up Study of 240 Gastrectomized Patients. *Symptoms without X-ray? Palmer says*  
 preventing the weight loss by using an adequate and regulated diet. *3 wks only*  
 ISAIAS SCHOR, SALOMON KRIGUN (Argentina)
- Pharmacological, Experimental and Clinical Aspects of 11925 C.  
 JOSE WAKS (Argentina)
- Transparietal Hepatic Cholangiography. *Taking all cancers as a whole*  
 P. GARCIA S., R. RIGHI (Argentina)
- Clinical and Surgical Experience with Painful Non-Calculous Cholelithiasis. *Small cancers have better prognosis than a large one.*  
 P. GARCIA S., P. REGHI (Argentina)
- Prognostic Meaning of the Galactose Test in the Breakdown Processes of the Liver.  
 H. PATILLA, R. BOLLER (Austria)
- Technical Improvement of the B.S.P. Liver Function Test.  
 A. DELCOURT, R. DELCOURT, A. DOMB (Belgium)
- Personality Configuration of 32 Patients with Non-Specific Ulcerative Colitis. *show it therefore*  
 H. FRANCISCO CAPISANO, J. FERNANDES PONTES (Brazil)
- Inadvertent Gastrostomy. Clinical, Radiological and Pathological Study. *Englishman says the*  
 M. RAMOS (Brazil)
- Achalasia of the Pylorus. *ad most reliable -*  
 ARRIGO RAY (Brazil)
- Disturbances in the Metabolism and Absorption of Fat in the Enteropathies. *diagnostic technique is a*  
 E. LLOPART C., GERALDO ESCOSTEGUY, C. FELIPE M. (Brazil)
- Portal Hypertension Due to Schistosomiasis: Its Surgical Treatment.  
 PEDRO ABDALLA (Brazil)

*Clinical Analysis & high index of cancer consciousness*

Effective Peptic Ulcer Therapy with Gastroduodenal Tissue Extract: Its Usefulness in Differentiating Benign from Malignant Gastric Ulceration.

LOUIS J. NOTKIN (Canada)

A Method for Studying Absorption from the Small Bowel in Humans.

A. BOGOCH, W. G. B. CASSELMAN, W. H. SUTHERLAND (Canada)

Distant Results in the Combined Treatment of Chronic Intestinal Amebiasis.

H. DOONER, J. SAAVEDRA, T. LABRIN (Chile)

Preventive Aspect of Peptic Ulcer.

A. ALBORNOZ P. (Colombia)

Hepatico-Biliary Ascariasis in Colombia.

TOMAS QUEVEDO (Colombia)

Laparo-Cholangiography in Colombia.

A. PENALOZA R. (Colombia)

Peritoneoscopy.

R. BARRERA C., R. MORFFI I. (Cuba)

Serum Transaminase in Liver Diseases.

JOAQUIN H. PIEDRA, JUAN BENCOMO, MERCEDES FERNANDEZ S. (Cuba)

Physiopathologic Study of Total Gastrectomy with Esophago-Duodenal Jejunoplasty.

EMILIO MORALES, JUAN BOLIVAR (Cuba)

Autopsy Studies on the Incidence of Gastric and Duodenal Ulcer. A Fifty Years' Survey.

JENS L. HANSEN (Denmark)

Epidemiologic Features in Amebiasis in Central and South America.

LUIS A. LEON (Ecuador)

Study of the Mechanism of the Action of Phenylbutazone on the Gastric Mucosa of the Rat.

S. BONFILS, CL. RICHIR, J. P. HARDOUIN, A. LAMBLING (France)

A New Technique of Experimental Gastric Ulceration: The Unnatural Ulcer.

S. BONFILS, G. LIEFOOGHE, G. ROSSI, CL. RICHIR, A. LAMBLING (France)

Pancreatography and Pancreatic Diseases.

J. HEPP (France)

Early Diagnosis of Carcinoma of the Stomach.

WILHELM BRUHL (Germany)

Peptic Ulcer as a Social Problem.

J. MATAKAS (Germany)

The Site of Absorption of Radioactive Vitamin B<sub>12</sub> in Man and the Experimental Animal.

C. C. BOOTH, D. L. MOLLIN (Great Britain)

The Post-Cholecystectomy Syndrome.

W. BURNETT (Great Britain)

Causes and Treatment of Weight Loss After Gastrectomy.

R. D. WELBOURN, I. D. A. JOHNSTON (N. Ireland)

Combined Cholecystography and Gastro-Intestinal Series.

A. S. JOHNSTONE (Great Britain)

Syndrome of Severe Bleeding in Colonic Diverticulosis.

J. S. FREW (Great Britain)

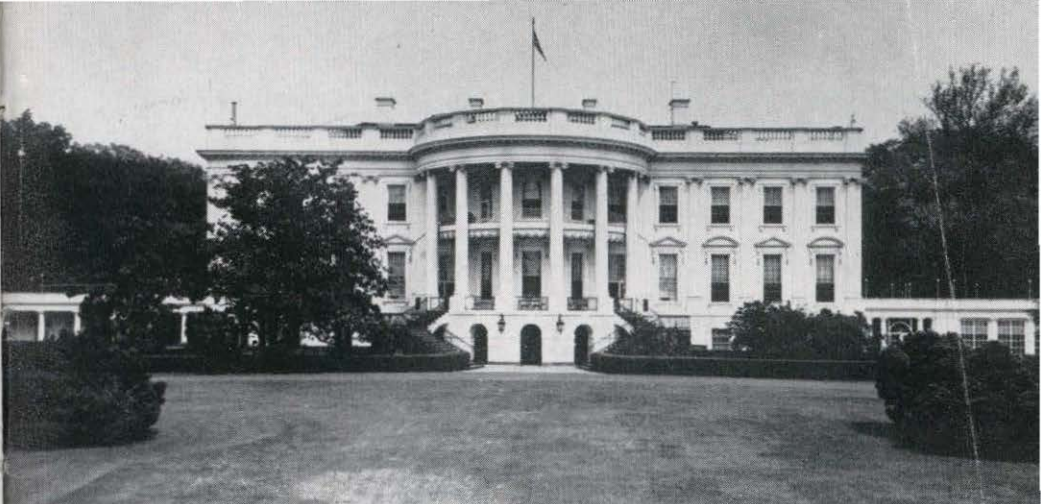
The Effect of Liquiritia Extract on Ulcer Disease of Man and Experimental Ulcer.

ZS. SZABO, GY. VARGHA (Hungary)

- The Lymphatic System of the Small Intestine and its Significance.  
 F. RENYI-VAMOS (Hungary)
- Observations on the Malabsorption Syndrome as Seen in South India  
 (Tropical Sprue).  
 S. J. BAKER (South India)
- Electrogastrography.  
 M. B. J. NADEL (Israel)
- Clinical Aspects of Amebiasis in Israel.  
 Z. LEWITUS (Israel)
- Factors in the Morbidity and Mortality of Diarrheal Disease in Israel  
 with Special Reference to Infantile Diarrhea.  
 P. YEKUTIEL (Israel)
- Contributions to the Study of Amebiasis.  
 L. CANNAVO (Italy)
- Trophopathic Pancreatitis.  
 M. COPPO (Italy)
- Experimental and Clinical Studies on the Interrelationship between Enta-  
 moeba Histolytica and Accompanying Bacterial Flora in the Intestinal  
 Amoebiasis.  
 M. SAITO (Japan)
- Recent Advances in Diagnosis of Peptic Ulcer.  
 T. MURAKAMI (Japan)
- Studies on Gastric Diseases Using "Gastro-Camera."  
 S. TASAKA, T. SAKITA, S. ASHIZAWA (Japan)
- Pancreatic Injury and Lipid.  
 SHINGO AOYAMA (Japan)
- Biochemical Studies on the Influences of the Pancreatic Disorder upon  
 the Liver Functions.  
 SHINGO AOYAMA (Japan)
- The Cytologic Diagnosis for Cancer of the Digestive Tract.  
 H. MIURA (Japan)
- Studies on Experimental Allergic Cirrhosis of the Liver.  
 K. ISHII (Japan)
- "Wakana Disease"; A Peculiar, Acute Syndrome Induced by Oral Inva-  
 sion of Numerous Larvae of Hookworm.  
 K. HIRAKI (Japan)
- Studies on So-Called Pseudocholera Infantum (Epidemic Diarrhea of  
 Weanling in Japan).  
 T. SHINOZUKA (Japan)
- Experimental Study on the Noble Operation on the Dog.  
 J. J. TEINTURIER, P. BERTIN, G. LISCIA (Morocco)
- Surgery of the Anal Sphincter Infections and of their Sequences in One  
 Unique Intervention: Their Anatomico-Physiological Basis.  
 G. CABANIÉ (Morocco)
- The Excretion of some Higher Saturated and Unsaturated Fatty Acids in  
 Celiac Disease and Mucoviscidosis.  
 J. FERNANDES, J. H. VAN DE KAMER, H. A. WEIJERS (Netherlands)
- Salmonellosis in Peru.  
 HECTOR COLICHON (Peru)
- Expulsion of Tapeworms in Out Patients.  
 J. CHLEBOVSKY, M. ZABLOCKY (Poland)
- Pancreatitis, Glycosuria and Diabetes in the Course of Peptic Ulcer.  
 J. W. GROTT, H. LISIECKA-ADAMSKA (Poland)

- Research into the Significance of the Adrenal Cortex in the Pathogenesis of Peptic Ulcer.  
K. BOJANOWICZ (Poland)
- Sleep Therapy of Peptic Ulcer.  
A. GOLDSCHMIED (Poland)
- Polyorganic Abdominal Syndrome, its Pathogenesis and Clinical Value.  
A. GOLDSCHMIED (Poland)
- Gastric Ulcerations Localized near the Cardia.  
R. DREWS (Poland)
- The Further Results of a Total Gastrectomy.  
J. BORSZEWSKI (Poland)
- The Problem of Cancer of the Cardiac Part of Esophagus and Stomach Associated with Diaphragmatic Hernia.  
J. BURACZEWSKI (Poland)
- Radiological Examination of the Oesophagus in Profile in a Deeply Forward-Bent Position: New Diagnostic Opportunities.  
S. LESZCZYNSKI (Poland)
- Normocytoperitonaeogram in Phase Contrast Microscope.  
T. TEMPKA, D. CEMBALA, M. KOWALCZYK, I. URASINSKI (Poland)
- The Inhibitory Effect of the New Polish Barbituric Drug on Experimental Gastric Ulcer in Rats.  
M. GAMSKI, Z. LYSANOWICZ-CZOCRA, M. CZOCRA, M. GORSKI (Poland)
- Experimental and Clinical Investigations on Partial Gastrectomy.  
K. CZYZEWSKI, H. BELOWSKI, J. KOTZ (Poland)
- The Sulphathiazole Test in Gastric Cancer.  
E. SZCZEKLIK, T. BOGDANIK, M. ORLOWSKI (Poland)
- On the Possibility of Applying a Simplified Treatment of Lambliasis with Atabrin.  
J. W. GROTT (Poland)
- Portal Hypertension due to Hepatitis Interstitiatis.  
K. CZYZEWSKI, A. FALKIEWICZ (Poland)
- Studies on the Early Detection of Ulcer Disease.  
N. GOLDENBERG, M. CASETTI, M. BLUM, O. CAPSA, E. HODOREANU (Rumania)
- Functional Origin of Jaundice in the Course of Icterus, said to be caused by Intrahepatic Stasis.  
I. PAVEL (Rumania)
- Meteorological Determination in the Periodic Evolution of Duodenal Ulcer.  
T. NICOLAESCO (Rumania)
- Variations in Uropepsin in the Evolution of Duodenal Ulcer.  
T. NICOLAESCO (Rumania)
- The Small Intestine in the Course of the Starvation Syndrome.  
T. NICOLAESCO, C. MIHAI, I. ANTONESCO (Rumania)
- Hematuria as a Symptom in the Evolution of Ulcer Disease and Duodenal Ulcer.  
C. MIHAI, E. CEAUSU (Rumania)
- Deficiency Manifestations in Resected Stomach Following Intestinal Absorption Troubles.  
OCTAVIAN FODOR (Rumania)





*The White House, Washington, D.C.*

Research on Gastric Secretion in the Jejunal Peptic Postoperative Ulcer.

OCTAVIAN FODOR (Rumania)

Considerations on Peptic Ulcer.

I. GOIA, GR. GHERMAN, O. BLENDEA, C. CUTUS (Rumania)

The Role of the Vascular Factor in the Pathogenesis of Pain in Ulcer Disease.

C. DIMITRIU, V. BERONIADE (Rumania)

Comparative Action of Oxygen and Carbon Dioxide Upon Some Liver Metabolic and Enzymatic Processes.

C. STOICESCU, A. M. ZIRRA, L. A. VOICU (Rumania)

Erosive Gastritis.

L. WALK (Sweden)

Iron Deficiency after Gastric Resection.

STEN WALLENSTEN (Sweden)

The Clinical Use of Cholecystokinin.

JOHN TOMENIUS (Sweden)

The Infundibulo-Cystic Syndrome: Its Diagnosis by Combined Cholecystographic Timed Duodenal Drainage and Biligraphin (Cholographin).

E. CAVIGLIA STARICCO (Uruguay)

Histamine in the Treatment of Ulcer: Twelve Years' Experience.

B. M. BERNSTEIN (New York, N.Y.)

Blinding Central Serous Choroidosis and Coexisting Amebiasis Responding to Antiamebic Therapy.

H. E. HAMILTON, A. E. BRALEY (Iowa City, Iowa)

Reversibility of the Pathologic Physiology of Achalasia following Pneumatic Dilatation Illustrated by X-Ray Cinematography.

J. ALFRED RIDER, H. C. MOELLER, EARL MILLER (San Francisco, California)

- The Closing Mechanism at the Lower Esophagus.  
C. ZAINO (New York, N.Y.)
- Effect of Cortisone, Hydrocortisone and Adrenocortisone Hormone alone and in combination with Mecholyl and Histamine on Gastric Secretion in the Dog.  
D. C. H. SUN, HARRY SHAY (Philadelphia, Pennsylvania)
- Effect of Using Injected Vein for Determination of Bromsulfalein Dye Retention.  
E. W. HAUCH, LUCILE COOLIDGE (Pomona, California)
- Dissociation of Human Gastric Juice Components.  
ARTHUR P. KLOTZ (Kansas City, Kansas)
- The Effect of Single Intravenous Injections of Sodium Dehydrocholate and Hydrocortisone Succinate upon Bile from Unanesthetized, Cholecystectomized Dogs.  
FRANK P. BROOKS, BRUCE J. GOULD (Philadelphia, Pennsylvania)
- The Significance of the Stomal Size and Position in the Prevention of Postgastrectomy Syndrome.  
WILLIAM E. ABBOTT, HARVEY KRIEGER, STANLEY LEVEY (Cleveland, Ohio)
- Recent Advances in Knowledge of Chemotherapy of Intestinal Helminthiases.  
C. SWARTZWELDER, W. W. FRYE (New Orleans, Louisiana)
- Infarction of the Small Intestine.  
R. H. MARSHAK, B. S. WOLF, JOAN ELIASOPH (New York, N.Y.)
- Malabsorption of Starch (Carbohydrate Dyspepsia: Chronic Enteritis).  
RUDOLF SCHINDLER (Los Angeles, California)
- Effects of Smoking on Gastric Secretion and Gastric Motility in Patients with Duodenal Ulcer.  
N. C. HIGHTOWER, J. M. MCKENZIE (Temple, Texas)
- Newer Developments in Proctology.  
ALFRED J. CANTOR (Flushing, New York)
- The Natural History of Esophageal Varices.  
DONALD BERKOWITZ, C. M. THOMPSON (Philadelphia, Pennsylvania)
- Formation of Direct Reacting Bilirubin Glucuronide in Vitro and Demonstration of a Defect in Bilirubin Conjugation in Constitutional Hepatic Dysfunction Gilbert's Disease).  
IRWIN M. ARIAS, IRVING M. LONDON (New York, N.Y.)
- The Secretary Consequences of Gastritis.  
H. M. SPIRO (New Haven, Connecticut)
- Evaluation of End Results Following the Use of Large Bowel for Replacement after Gastrectomy.  
FRANK B. MCGLONE, MARSHALL FREEDMAN, G. E. ARAGON (Denver, Colorado)
- Studies of the Gastric Biopsy Obtained at Gastroscopy.  
EMMANUEL DEUTSCH (Boston, Massachusetts)
- The Pathophysiology of Symptomatic "Curling" or so-called "Diffuse Spasm."  
PHILIP KRAMER, BERTRAM FLESHLER (Boston, Massachusetts)
- The Clinical Usefulness of Newer Methods for Determining Lipase and Esterase in Human Serum.  
JULIUS WENGER (Atlanta, Georgia)

Studies of the Relationship between D-Xylose Absorption and Gastrointestinal Motility.

LAWRENCE H. WARBASSE, JR., JOHN A. BENSON, JR., CHESTER M. JONES with technical assistance of GLADYS D. DRUMMEY, HARRIET PROVINE (Boston, Massachusetts)

Peptic Ulcer in Women.

E. FRIEDMAN, R. D. SCHWARTZ, W. CURTIS, M. L. PILOT, H. M. SPIRO (New Haven, Connecticut)

Amyloidosis in Regional Enteritis: A Frequent and Significant Complication in Autopsied Cases.

J. LAWRENCE WERTHER, ADOLPHO SCHAPIRA, OSVALDO L. RUBINSTEIN, ABRAHAM I. FRIEDMAN, HENRY D. JANOWITZ (New York, N.Y.)

Potassium Concentration in Histamine Stimulated Gastric Juice of Man.

J. LAWRENCE WERTHER, FRANKLIN HOLLANDER (New York, N.Y.)

The Effect of Small Intestinal Mucus on the Radiological Appearance of Barium Sulfate Suspensions in Vivo and Vitro.

CHARLES J. SHERKOW, FRANKLIN HOLLANDER, VERNON A. WEINSTEIN (New York, N.Y.)

Incidence of Carcinoma in Ulcerative Colitis.

HARRY YARNIS (New York, N.Y.)

Carcinoma of the Gall Bladder: Review of Sixty-Five Cases.

DONALD BERKOWITZ, CHARLES M. THOMPSON, ALEX ULIN (Philadelphia, Pennsylvania)

An Aggressive Approach to the Management of Hepatic Coma.

DONALD BERKOWITZ, CHARLES M. THOMPSON (Philadelphia, Pennsylvania)

Improved Cytological Diagnostic Accuracy of Gastric Lesions with a New Method of Cell Collection.

HERBERT E. NIEBURGS, FRANKLIN HOLLANDER, J. LAWRENCE WERTHER, HENRY D. JANOWITZ (New York, N.Y.)

The Exfoliation of Cells of Gastrointestinal Malignancies into the Blood Stream and Peritoneal Cavity.

GEORGE E. MOORE (Buffalo, New York)

Quantitative Gastric Secretory Studies in the Primate.

LLOYD M. NYHUS, ROBERT V. DE VITO, ANDREW J. MARTINIS, HENRY N. HARKINS (Seattle, Washington)

The Use of Cinefluorography in Lesions of the Gastrointestinal Tract.

THEODORE A. TRISTAN, RAYMOND GRAMIAK, JAMES S. WATSON, JR., GEORGE H. RAMSEY, HARRY L. SEGAL (Rochester, New York)

The Role of Gastric Reflux in Heartburn and Diseases of the Esophagus.

EDWIN BOROS (New York, N.Y.)

Detection of Gastro-Esophageal Reflux by Intraluminal Measurement of Pressure and pH.

STEWART G. TUTTLE, MORTON I. GROSSMAN (Los Angeles, California)

Nutritional Crises in Gastrointestinal Disease.

ARTHUR M. FREEMAN (Birmingham, Alabama)

Biliary Atresia Treated by Establishment of Biliary Fistula.

JULIAN A. STERLING (Philadelphia, Pennsylvania)

Regional Enteritis: Clinical Aspects and Diagnosis in One Hundred Patients.

CHARLES H. BROWN, JOHN E. DAFENER (Cleveland, Ohio)

Functional Dysphagia due to Esophageal Dysrhythmia.

STANLEY H. LORBER, HARRY SHAY (Philadelphia, Pennsylvania)

A Method for Intragastric Beta Radiation Therapy with Radioactive Ruthenium-Rhodium<sup>106</sup> in Humans.

ARMAND LITTMAN, BENUM W. FOX, RAYMOND TEPLITZ, ERWIN M. KAMMERLING (Chicago, Illinois)

The Clinical Significance of Blood Ammonia Levels in Cirrhosis of the Liver.

N. W. CHAIKIN, MAX KONIGSBERG (New York, N.Y.)

Abrasive Brush Technique for the Cytologic Detection of Cancer of the Colon.

SAMUEL S. GILBERT (Brooklyn, New York)

Achlorhydria Detection: Experience with Tubeless Gastric Analysis.

SAMUEL S. GILBERT (Brooklyn, New York)

A Comparison between three commonly employed Tests of Gastric Section.

I. N. MARKS, HARRY SHAY (Philadelphia, Pennsylvania)

A Comparison of the Usefulness of I<sup>131</sup> Triolein, Risa and Fat and Nitrogen Balance Techniques in the Diagnosis of Malabsorption.

A. B. FRENCH, M. ISHIKAWA, H. S. WIGGINS, H. M. POLLARD (Ann Arbor, Michigan)

Experiences with the Gluten-Gliadin Free Diet in the Treatment of Idiopathic Malabsorption Syndrome.

MARVIN H. SLEISENGER, DAVID H. LAW, JAMES H. PERT, THOMAS P. ALMY (New York, N.Y.)

The Fibroscope.

MOSES PAULSON, SAMUEL A. TALBOT (Baltimore, Maryland)

Colon Obstruction due to Carcinoma: 227 Cases (Diagnostic and Therapeutic Problems).

A. W. ULIN, E. EHRLICH, W. C. SHOEMAKER, J. AZORSKY (Philadelphia, Pennsylvania)

Mortality Factors in Hemorrhagic Pancreatitis.

A. W. ULIN, I. H. SOKOLIC (Philadelphia, Pennsylvania)

Carcinoma of the Gallbladder: A Significant Complication of Cholelithiasis.

A. W. ULIN, SEYMOUR WAGNER, JOSEPH M. GAMBESCIA (Philadelphia, Pennsylvania)

Studies of Infectious Agents in Infant Diarrhea: The Importance of Concomitant Virologic, Bacteriologic and Parasitologic Studies of the Fecal Flora.

VIOLA M. YOUNG, MINNIE R. SOCHARD, DEBORAH B. JAHIEL (Washington, D.C.)

Residual Biliary Infection, Bacteriology, Biliary Dynamics and a Report of a New Choleric.

JOHN MALCOLM MCGOWAN (Quincy, Massachusetts)

Clinical Studies of the Gastrointestinal Tract Utilizing Radioisotopes.

L. J. POPE, R. G. MUTH, C. R. KOONS with technical assistance of R. W. MATLOCK, B. L. SHULZ (Bethesda, Maryland)

An Operation for Agnesis of the External Bile Ducts

HEINRICH NECHELES, N. C. JEFFERSON, T. OWAGA (Chicago, Illinois)

Components of Bile obtained by Duodenal Intubation.

R. URRUTIA (Venezuela)

Bacteriology of Cholecystitis.

R. URRUTIA (Venezuela)

---

## SCIENTIFIC EXHIBITION

The exhibit applicants were carefully screened by the Committee, with the selection influenced by the desire to give comprehensive coverage to as many aspects of gastroenterology as possible, while correlating these presentations with the formal program.

354 The Use of Color Photomicrographs in Teaching Recognition of the Intestinal Parasites.

FRANCES M. SPENCER (San Angelo, Texas); LEE S. MONROE (La Jolla, California)

355 Bile Pigments of Icteric Serum.

J. L. BOLLMAN, F. F. WHITCOMB, Jr., H. N. HOFFMAN, II, H. R. BUTT (Rochester, Minnesota)

356 Gastrointestinal Cancer: Definitive Diagnosis by Exfoliative Cytology.

HOWARD F. RASKIN, JOSEPH B. KIRSNER, WALTER L. PALMER, SYLVIA PLETICKA, WILLARD A. YAREMA (Chicago, Illinois)

357 Complete Nutriment in Therapy of Peptic Ulcer.

ASHER WINKELSTEIN (New York, N.Y.)

358 Malabsorption Syndromes.

ROBERT J. BOLT, ARTHUR B. FRENCH, H. MARVIN POLLARD (Ann Arbor, Michigan)

359 Life History of Non-Specific Ulcerative Colitis: Relation of Prognosis to Anatomical and Clinical Varieties.

JAMES L. A. ROTH, A. VALDES-D., G. N. STEIN, H. L. BOCKUS (Philadelphia, Pennsylvania)

360 Helminthiases and Anthelmintics.

J. C. SWARTZWELDER, W. W. FRYE, J. P. MUHLEISEN, J. H. MILLER, R. LAMPERT, A. PENA CHAVARRIA, S. H. ABADIE, R. W. SAPPENFIELD, S. O. ANTHONY, L. J. COCO, C. B. CARSON, JR., P. E. ROBERTSON, J. F. HEBERT (New Orleans, Louisiana)

361 Obstructive Lesions of the Duodenum Distal to the Bulb.

CHARLES H. BROWN, WILLIAM H. STRITTMATTER (Cleveland, Ohio)

362 Clinical Experience with the I.V. Secretin Test in Pancreatic Disease and Function.

ARTHUR P. KLOTZ, HAMDİ S. AKTAN (Kansas City, Kansas)

363 Clinical Radioisotope Studies of the Gastrointestinal Tract.

E. R. KING, WILLIAM S. MAXFIELD, S. F. WILLIAMS (Washington, D.C.)

364 The Relationship between Acid Output and Parietal Cell Population in the Dog.

I. N. MARKS, S. A. KOMAROV, HARRY SHAY (Philadelphia, Pennsylvania)

- 365 Studies on Ulcer Pain.  
E. CLINTON TEXTER, JR., HUBBARD W. SMITH, GASTON VANTRAPPEN,  
MARTIN LIEMER, JUNKO IKEYA, CLIFFORD J. BARBORKA (Chicago,  
Illinois)
- 366 Failures in Long term Oral Treatment of Pernicious Anemia with  
B<sub>12</sub> Intrinsic Factor Preparations.  
RAGNER BERLIN, HANS BERLIN, GUNNAR BRANTE, SVEN-GOSTA SJO-  
BERG (Eskilstuna, Sweden)
- 367 Small Intestinal Biopsy: Method and Findings.  
MARGOT SHINER, I. DONIACH (London, England)
- 368 Peritoneoscopic Study of Liver and Gallbladder Diseases.  
ROGELIO LAVIN, VICENTE SAHIG, FERNANDO VILLA (Havana, Cuba)
- 369 Intestinal Biopsy Capsule.  
WILLIAM CROSBY, BENJAMIN H. SULLIVAN, C. E. BUTTERWORTH,  
R. B. W. SMITH (Washington, D.C.)
- 370 Recognition and Treatment of Alterations of Ammonia Metabolism.  
JOHN S. NAJARIAN, HAROLD A. HARPER, H. J. MCCORKLE (San  
Francisco, California)
- 371 Intrasplenic Approach to the Portal Circulation.  
W. D. DAVIS, JR., STANLEY REICHMAN, RICHARD GORLIN, J. P.  
STORAASSLI, H. M. BATSON, JR. (New Orleans, Louisiana)
- 372 The Bile Duct Papilla.  
JULIAN A. STERLING (Philadelphia, Pennsylvania)
- 373 Primary Neoplasms of the Small Bowel.  
A. C. BRODERS, JR., N. C. HIGHTOWER, JR., R. R. WHITE, J. C.  
STINSON, W. H. HUNT, III (Temple, Texas)
- 374 The Treatment of Idiopathic Ulcerative Proctitis by the Topical  
Application of the Corticosteroids.  
JOHN MCGIVNEY, MARCEL PATTERSON (Galveston, Texas)
- 375 Pain Patterns in Abdominal Diseases.  
L. A. SMITH, N. A. CHRISTENSEN, N. O. HANSON, D. E. RALSTON,  
R. W. P. ACHOR, K. G. BERGE, G. W. MORROW, JR., A. H. BUL-  
BULIAN (Rochester, Minnesota)
- 376 Refractory Diarrhea and the Malignant Carcinoid Syndrome.  
GUY JORON, GORDON YOUNG (Montreal, Canada)
- 377 Studies in Fourteen Patients with Steatorrhoea.  
A. C. FRAZER, R. SCHNEIDER, R. F. FLETCHER, H. G. SAMMONS,  
W. F. POVER, B. SHAW, MARJORIE HARRIS (Birmingham, England)
- 378 Cytological Evaluation of Gastric Lesions.  
TOM ARNOLD, JAMES HAMPTON, WALTER OLIN, HENRY GLASS,  
CATHARINE CARRUTH (Houston, Texas)
- 379 Management of Gastric Ulcer.  
WILLIAM H. BACHRACH, LEO KAPLAN, VERNON LIEBERMAN (Los  
Angeles, California)
- 380 The Gastric Analysis: Its Diagnosis and Therapeutic Implications.  
J. ALFRED RIDER, HUGO C. MOELLER, JOYCE SWADER, LOURDES O.  
AGOAILI, RICHARD G. DEVEREAUX, JENNIE LEE, ERNESTO PULETTI,  
JOHN O. GIBBS (San Francisco, California)
- 381 A New Method of Liver Puncture.  
L. FRIEDRICH (Budapest, Hungary)

- 382 A Study on Iron Absorption.  
 JULIUS POMERANZE, RAYMOND J. GADEK, RONALD C. BISHOP, DON-  
 ALD R. KORST (New York, N.Y.)
- 383 The Prevalence of Intestinal Parasites in Foreign Service Employees  
 and their Dependents.  
 DONALD E. KAYHOE, HENRY K. BEYE, G. P. GEORGE (Bethesda,  
 Maryland)
- 384 Coloured Laparophotographs.  
 JACQUES CAROLI (Paris, France)

Addendum—See page 76

## MOTION PICTURES

CARIBAR ROOM, SHERATON PARK HOTEL

The formal motion picture exhibits are shown continuously from Monday morning to Thursday noon. Upon request, certain films may be reshowed on Thursday morning, May 29.

Monday, May 26

### Esophagus

- 385 9:00 a.m.—9:15 a.m.—Cinefluorographic Analysis of the Mechanism of Swallowing.  
 G. H. RAMSEY, JAMES S. WATSON, R. GRAMIAK, S. A. WEINBERG, (U.S.A.)
- 386 9:25 a.m.—9:40 a.m.—Cinefluorographic Views of Specific Lesions of the Esophagus, Stomach and Duodenum.  
 THEODORE A. TRISTAN, GEORGE RAMSEY, JAMES S. WATSON, HARRY L. SEGAL (U.S.A.)
- 387 9:50 a.m.—10:20 a.m.—Roentgen Studies of Motor Phenomena in the Distal Esophagus: Application to Differential Diagnosis of the Vestibule, the Phrenic Ampulla and Minimal Hiatal Hernia.  
 BERNARD S. WOLF, MAX L. SOM, RICHARD H. MARSHAK, SIGMUND A. BRAHMS, ELLIOT GREENBERG (U.S.A.)
- 388 10:30 a.m.—10:50 a.m.—Esophagosopic Views of Lesions of the Esophagus.  
 PAUL H. HOLINGER, KENNETH C. JOHNSTON (U.S.A.)
- 389 11 a.m.—11:20 a.m.—Closing Mechanism of the Lower Esophagus.  
 CONSTANTINO ZAINO (U.S.A.)
- 390 11:30 a.m.—12 noon—Simultaneous Esophagogastroscopy: A Simple Method of Rotation for Multiple Position Examination.  
 HENRY LAURENS, A. C. BRODERS, JR. (U.S.A.)

### Stomach

- 391 2 p.m.—2:25 p.m.—Human Gastric Function: An Experimental Study of Tom, a Unique Subject with Gastric Fistula.  
 STEWART WOLF (U.S.A.)
- 392 2:34 p.m.—3:00 p.m.—Measurement of Gastrointestinal Motility.  
 WILLIAM H. BACHRACH (U.S.A.)
- 393 3:10 p.m.—3:40 p.m.—Stress and the Adaptation Syndrome.  
 HANS SELYE (Canada)
- 394 4:20 p.m.—4:40 p.m.—Volvulus of the Stomach.  
 L. DIAMANT-BERGER (France)

## Tuesday, May 27

### Miscellaneous

- 395 9:00 a.m.—9:30 a.m.—The Malnutrition Syndrome (Kwashiorkor) in Children.  
CARLOS MONSON M. (Guatemala)
- 396 10:25 a.m.—10:50 a.m.—Intestinal Polyposis Associated with Mucocutaneous Melanin Pigmentation (Peutz-Jeghers Syndrome).  
LLOYD G. BARTHOLOMEW, JOHN M. WAUGH (U.S.A.)
- 397 11 a.m.—11:20 a.m.—Bedside Management of Fluid Balance Problems.  
BELDING SCRIBNER, CARL R. HINES (U.S.A.)
- 398 11:30 a.m.—11:50 a.m.—Liver Biopsy with the Vim Silverman Needle.  
CHARLES H. BROWN, ARTHUR M. CLARK (U.S.A.)
- 399 2 p.m.—2:15 p.m.—Endoscopic Exploration of the Abdomen.  
ANDRÉ CALAME (Switzerland)
- 400 2:25 p.m.—2:40 p.m.—Menghini's Method of Rapid Needle Biopsy of the Liver.  
GIORGIO MENGhini (Italy)
- 401 2:50 p.m.—3:20 p.m.—Pathology of the Rectosigmoid by Rectoscope.  
SACHA SEGAL (France)
- 402 3:30 p.m.—3:50 p.m.—Gnathostomiasis in Japan.  
ICHIRO MIYAZAKI (Japan)
- 403 3:50 p.m.—close—Diagnostic and Therapeutic Advances in Liver Disease.  
UPJOHN COMPANY (U.S.A.)

## Wednesday, May 28

### Biliary Tract

- 404 9:00 a.m.—9:20 a.m.—Management of Biliary Atresia.  
JULIAN STERLING (U.S.A.)
- 405 9:25 a.m.—10 a.m.—Cholecystectomy and Operative Cholangiography.  
JOEL BAKER (U.S.A.)
- 406 10:05 a.m.—10:30 a.m.—Right Hepatic Lobectomy for Cancer.  
GEORGE PACK, RICHARD BRASFIELD (U.S.A.)
- 407 10:35 a.m.—10:55 a.m.—Hepatic-jejunostomy with Transhepatic Insertion of a Catell Tube.  
RAFAEL MUNOZ K. (Mexico)
- 408 11:00 a.m.—11:30 a.m.—New Operation for the Prevention of Adhesions arising from Operations for Perforated Gastrointestinal Ulcers.  
E. KUBANYI (Hungary)
- 409 11:35 a.m. 12 noon—The Technic of Early Ambulation in Abdominal Major Operations.  
HENRI PASCHOUD (Switzerland)

### Gastric Surgery

- 410 2:00 p.m.—2:20 p.m.—Billroth One Resection in Duodenal Ulcer.  
H. WILLENEGER (Switzerland)
- 411 2:30 p.m.—3 p.m.—Subtotal Gastrectomy.  
BENEDICTO MONTENEGRO (Brazil)



- 412 3:10 p.m.—3:40 p.m.—Extended Total Gastrectomy and Reconstruction of a Gastric Reservoir with a Jejunal Loop.  
CARLOS MONTEIRO (Brazil)
- 413 3:40 p.m.—4:20 p.m.—Transabdominal Total Gastrectomy with Supradiaphragmatic Anastomosis.  
M. VERSTEEG (Netherlands)
- 414 4:20 p.m.—4:50 p.m.—Anorectal and Sigmoidoscopic Examination with Differential Diagnosis.  
MALCOLM HILL, SR. (U.S.A.)
- 415 4:50 p.m.—close—Sigmoid Resection with Preliminary Isolation Technique.  
RUPERT TURNBULL (U.S.A.)

Thursday, May 29

- 416 Television Radioscopy during Operations of the Biliary Passages.  
P. MALLET-GUY (France)
- 417 Esophageal Replacement with a Reversed Gastric Tube.  
H. J. HEIMLICH (U.S.A.)
- 418 The Sphincter of Oddi.  
JACQUES CAROLI (France)
- 427 Cysto-Jejunostomy.  
A. L. MORENO (Mexico)
- 429 The Radio-Cinematography of Deglutition.  
E. CHERIGIE (France)
- 430 Radio-Cinematography; The Modern Examination Technique.  
E. CHERIGIE (France)

*Lincoln Memorial*



# WORLD CONGRESS OF GASTROENTEROLOGY

## SOCIAL PROGRAM

**Sunday Evening, May 25, 6:30 P.M.**

**GRAND RECEPTION**—Pan American Union Building. The Reception will be a gathering of all World Congress registrants and will feature a cocktail hour, buffet dinner and entertainment.

**Monday Afternoon, May 26, 2:30 P.M.**

**TOUR OF NATIONAL NAVAL MEDICAL CENTER** at Bethesda, Maryland. Busses will leave Sheraton Park and Shoreham Hotels at 2:30 p.m. Tour will be followed by Tea at the home of the Surgeon General, United States Navy.

**Evening, 8:30 P.M.**

**CONCERT NIGHT.** The National Symphony Orchestra and Howard University Choir at Constitution Hall.

**Tuesday Morning, May 27, 9:00 A.M.**

**TOURS OF WASHINGTON, D.C.**

(a) Including a visit to the National Capitol Building, Lincoln Memorial and other Government Buildings. Return to Hotels in time for lunch.

(b) Including visits in tour (a). Instead of returning to the hotels, tour (b) will go to Hogate's Seafood Restaurant for lunch. Following lunch the tour will visit the Bureau of Printing and Engraving and the Smithsonian Institute. Return at 3:30 p.m. Tickets available at the Hospitality Desk.

**Evening, 8:00 P.M.**

**FORMAL BANQUET** of the World Congress of Gastroenterology at Sheraton Hall, the Sheraton Park Hotel. Address: Sir Leslie Monro, President, General Assembly, U.N. Entertainment: Le Ballet Espagnol, Ximenez-Vargas.

*Pan American Union Building*





### *Mount Vernon*

#### **Wednesday Morning, May 28, 8:00 A.M.**

Visit to THE WHITE HOUSE, LEE MANSION and ARLINGTON. Busses will leave at 8:00 a.m. in order to be at The White House at 8:30 a.m. Visit will continue to the Lee Mansion, home of General Robert E. Lee, and Arlington Cemetery. Tickets available at Hospitality Desk.

#### **Midday, 12.05 P.M.**

Luncheon on the Terrace of the Shoreham Hotel, followed by a presentation of the newest FASHIONS by glamorous models from Julius Garfinkel and Company. Tickets available at Hospitality Desk.

#### **Evening, 7:30 P.M.**

Cocktails, dinner and dancing, Terrace of the Shoreham Hotel, under the stars. Xavier Cugat and his orchestra.

#### **Thursday Afternoon, May 29, 2:00 P.M.**

TOUR OF ALEXANDRIA and MOUNT VERNON, the home of George Washington, followed by tea at WOODLAWN

or

TOUR OF ALEXANDRIA AND GUNSTON HALL, followed by tea at WOODLAWN

Tickets available at Hospitality Desk.

#### **Evening**

EMBASSY NIGHT AND PRIVATE PARTIES. This will be a splendid opportunity for many of the Congress registrants from other countries to visit their own national embassies in Washington, D.C. This is also an evening available for private parties.

#### **Friday Evening, May 30**

ANNUAL BANQUET — AMERICAN GASTROENTEROLOGICAL ASSOCIATION. Sheraton Hall. Cocktails 7:30 p.m. Continental Room.

**PROGRAM**  
of the  
**FIFTY-NINTH ANNUAL MEETING**

**AMERICAN**  
**GASTROENTEROLOGICAL**  
**ASSOCIATION**

-----  
WASHINGTON, D. C.  
FRIDAY AND SATURDAY  
May 30 and 31, 1958  
-----

HEADQUARTERS FOR ALL SESSIONS  
SHERATON PARK HOTEL  
-----

*The Medical Profession is Cordially Invited*

**SPECIAL NOTICES**

The Annual Meeting will be adjourned at the conclusion of the Saturday Morning Session.

All sessions and the banquet will be conducted on Eastern Daylight Saving Time and will start promptly at the time specified.

The time allowed for each presentation is listed under the name of the essayist. Three minutes will be allowed for closing discussions and discussions from the floor. The time limit will be strictly and impartially enforced.

Any member or invited guest desiring to discuss a paper from the floor is requested to file a written request with the presiding officer. No member shall discuss more than one paper at each morning or afternoon session except by request of the chairman.

All papers presented at the Annual Meeting become the property of the Association and should be given to the Secretary immediately after their presentation in order to have them considered for publication in GASTROENTEROLOGY.

In the matter of publication of papers, the responsibility of the Association is limited to the printing of papers not to exceed five thousand words, with an allowable total additional expense for illustrations, and so forth, of not more than six cuts per paper, all additional expense to be borne by the individual authors of the papers.

The Executive Session on Friday afternoon is attended only by Senior and Active Members. Associate members and guests will be given an opportunity to retire before this meeting.

The Annual Banquet will be held at the Sheraton Park Hotel on Friday, May 30, at 8:30 o'clock p.m. A cocktail party for those who wish to attend will precede the banquet. Ladies and guests invited by members are welcome. Tickets for the banquet and the cocktail party must be secured at the Registration Desk before noon, Friday, the 30th.

*Members be sure to sign the register, thus supplying the proof which the Council requires of your presence at the Annual Meeting in accordance with the terms of the By-laws, i.e., "Any member failing to attend three consecutive Annual Meetings of the Association, without excuse acceptable to the Council, may be dropped from the Association by vote of the Council, but before he shall be dropped notice must be sent to him informing him of the proposed action."*

## AMERICAN GASTROENTEROLOGICAL ASSOCIATION

FRIDAY MORNING

May 30, 1958, 8:45 A.M.

Eastern Daylight Saving Time

SHERATON PARK HOTEL, WASHINGTON, D. C.

### LIVER

501 PANEL DISCUSSION: Bilirubin Metabolism.

HUGH R. BUTT, Rochester, Minnesota—MODERATOR; IRWIN M. ARIAS (by invitation), New York, N. Y., JESSE L. BOLLMAN, Rochester, Minnesota, KURT ISSELBACHER (by invitation), Boston, Massachusetts, RUDI SCHMID (by invitation), Boston, Massachusetts.

60 minutes

502 Newer Studies of the Portal Circulation.

By NORBERT HENNING (by invitation), Erlangen, Germany.

20 minutes

503 The Differential Analysis of the Stages of Hepatic Excretory Function Utilizing Substances Tagged with Gamma-Emitting Isotopes.

By EDWIN ENGLERT, JR. (by invitation), BELTON A. BURROWS (by invitation), and FRANZ J. INGELFINGER, Boston, Massachusetts.

10 minutes

Discussion of papers 502 and 503 to be opened by WADE VOLWILER, Seattle, Washington, and CHARLES H. BROWN, Cleveland, Ohio.

505 Deposition and Storage of Vitamin B<sub>12</sub> in the Normal and Diseased Liver.

By GEORGE B. JERZY GLASS, WALTER L. MERSHEIMER (by invitation), LINN J. BOYD (by invitation), and LEONARD EBIN (by invitation), New York, N.Y.

10 minutes

Discussion of paper 505 to be opened by JAMES A. HALSTED, Syracuse, New York, and HANS POPPER, New York, N.Y.

- 506 The Transaminase Content of Parenchymatous Liver Cells.  
By KEITH S. HENLEY (by invitation), HUGH S. WIGGINS (by invitation), H. MARVIN POLLARD, and ESTHER DULLAERT (by invitation), Ann Arbor, Michigan.  
10 minutes
- 507 Serum  $\beta$ -Glucuronidase Activity in Gastrointestinal Disease.  
By ESTEBAN P. PINEDA (by invitation), JULIUS A. GOLDBERG (by invitation), BENJAMIN M. BANKS, and ALEXANDER M. RUTENBURG (by invitation), Boston, Massachusetts.  
10 minutes
- Discussion of papers 506 and 507 to be opened by FELIX WROBLEWSKI (by invitation), New York, N.Y., and THOMAS C. CHALMERS, Boston, Massachusetts.
- 508 Urinary Excretion of 5-Hydroxyindoleacetic Acid After the Administration of Serotonin Precursor in Patients with Hepatic Cirrhosis.  
By ROBERT DONALDSON (by invitation) and SEYMOUR J. GRAY, Boston, Massachusetts.  
10 minutes

**FRIDAY AFTERNOON**  
**May 30, 1958, 2:00 P.M.**  
Eastern Daylight Saving Time

**PANCREAS**

Symposium in Memory of MANDRED W. COMFORT  
President, American Gastroenterological Association  
Deceased August 7, 1957

- 509 The Pathogenesis of Acute Pancreatitis: Experimental and Clinical Study.  
By PAUL NEMIR, JR. (by invitation), and DAVID L. DRABKIN (by invitation). Introduced by HENRY L. BOCKUS, Philadelphia, Pennsylvania.  
10 minutes
- 510 Is There Pancreatic Ductal Obstruction in Chronic Pancreatitis?  
By HENRY D. JANOWITZ, and DAVID A. DREILING, New York, N.Y.  
10 minutes

Discussion of papers 509 and 510 to be opened by HARRY SHAY, Philadelphia, Pennsylvania, and MORTON I. GROSSMAN, Los Angeles, California.

- ~~511 Newer Aspects of Pancreatic Disease.~~  
By LLOYD G. BARTHOLOMEW (by invitation). Introduced by CARL G. MORLOCK, Rochester, Minnesota.  
10 minutes
- ~~512 Urine Diastase in the Evaluation of Pancreatic Disease.~~  
By JOHN J. BUDD, JR., (by invitation), K. E. WALTER (by invitation), SR. M. LAUREN HARRIS, S.S.M. (by invitation), and WILLIAM A. KNIGHT, JR., St. Louis, Missouri.  
10 minutes

~~513~~ An Evaluation of Roentgen Changes in Acute Pancreatitis; Correlation with Clinical Findings.

By GEORGE N. STEIN (by invitation), MARTIN H. KALSER, NORAIR N. SARIAN (by invitation) and ARTHUR FINKELSTEIN (by invitation), Philadelphia, Pennsylvania.

10 minutes

Discussion of papers 511, 512 and 513 to be opened by CHESTER M. JONES, Boston, Massachusetts, THOMAS E. MACHELLA, Philadelphia, Pennsylvania, and HARRY M. WEBER, Rochester, Minnesota.

~~514~~ Pathologic Correlations as a Guide to the Surgical Therapy of Chronic Relapsing Pancreatitis.

By KENNETH W. WARREN (by invitation). Introduced by S. ALLEN WILKINSON, JR., Boston, Massachusetts.

10 minutes

515 Surgical Aspects of Pancreatitis.

By JOHN M. WAUGH, Rochester, Minnesota.

10 minutes

Discussion of papers 514 and 515 to be opened by J. WILLIAM HINTON, New York, N.Y., and WILLIAM W. SHINGLETON, Durham, N.C.

## EXECUTIVE SESSION

For Senior and Active Members Only

4:00 P.M.

Eastern Daylight Saving Time

## SATURDAY MORNING

May 31, 1958, 9:00 A.M.

Eastern Daylight Saving Time

## METHODOLOGY

516 Simultaneous Fluorocinematography and Intraluminal Pressure Measurements in the Study of Esophageal Motility.

By GASTON VANTRAPPEN (by invitation), MARTIN D. LIEMER (by invitation), JUNKO IKEYA (by invitation), E. CLINTON TEXTER, JR. and CLIFFORD J. BARBORKA, Chicago, Illinois.

10 minutes

517 Recording of Intraluminal Gastrointestinal Pressures by a Radio-telemetering Capsule.

By JOHN T. FARRAR (by invitation), and JAMES S. BERNSTEIN (by invitation). Introduced by THOMAS P. ALMY, New York, N.Y.

10 minutes

Discussion of papers 516 and 517 to be opened by CHARLES F. CODE, Rochester, Minnesota, and PHILIP KRAMER, Syracuse, New York.

## INTESTINES

FOURTH ANNUAL MEMORIAL LECTURE of the American Gastroenterological Association.

The Clinical Picture of Carcinoidosis.

By JAN WALDENSTROM, Malmo, Sweden.

30 minutes

518 ~~Serotonin and the Gastrointestinal~~ Tract.

By BERNARD J. HAVERBACK (by invitation. Introduced by GEORGE K. WHARTON, Los Angeles, California.

10 minutes

Discussion of paper 518 to be opened by THOMAS R. HENDRIX (by invitation), Baltimore, Maryland.

519 Clinical Significance of Diverticulosis.

By RUSSELL S. BOLES, JR. (by invitation), and SARA M. JORDAN, Boston, Massachusetts.

10 minutes

Discussion of paper 519 to be opened by WALTER L. PALMER, Chicago, Illinois.

520 Antibiotics for Colon Surgery.

By ISIDORE COHN, JR. (by invitation). Introduced by G. GORDON McHARDY, New Orleans, Louisiana.

10 minutes

Discussion of paper 520 to be opened by NATHAN A. WOMACK, Chapel Hill, North Carolina.

521 PANEL DISCUSSION: Regional Enteritis.

BURRILL B. CROHN, New York, N.Y.—MODERATOR; J. ARNOLD BARGEN, Rochester, Minnesota, BRYAN N. BROOKE (by invitation), Birmingham, England, RICHARD B. CATTELL, Boston, Massachusetts, JOSEPH B. KIRSNER, Chicago, Illinois, FREDERIC E. TEMPLETON, Seattle, Washington.

60 minutes

### TO BE READ BY TITLE

Fluid and Electrolyte Alterations Resulting from Diseases of the Gastrointestinal Tract.

By WM. E. ABBOTT, HARVEY KRIEGER (by invitation), and STANLEY LEVEY (by invitation), Cleveland, Ohio.

The Effect of Increasing Doses of Adrenal Glucocorticoids on Gastric Acid and Pepsin Secretion.

By IVAN T. BECK (by invitation), HAROLD W. FLETCHER (by invitation), HELEN K. GRIFF (by invitation), and RICHARD D. MCKENNA, Montreal, Canada.

A Clinical Test for Recognition of Chest and Abdominal Pain Due to Esophagitis.

By LIONEL M. BERNSTEIN (by invitation) Hines, Illinois. Introduced by MORTON I. GROSSMAN, Los Angeles, California.



The Significance of Target Cells in Hepato-Biliary Disease.

By JOHN R. BINGHAM, Toronto, Canada.

A Preliminary Report on the Use of Cobalt-60 Teletherapy in the Treatment of Complicated Peptic Ulcer.

By CHARLES H. BROWN, and ROBERT A. HAYS (by invitation), Cleveland, Ohio.

Diagnostic Value of Enzymes, Glycoproteins and Cells in the Study of Ascites.

By JAMES C. CAIN, LLOYD G. BARTHOLOMEW (by invitation), RANDOLPH A. ROVELSTAD (by invitation), GERARD A. FLEISHER (by invitation), WARREN F. MCGUCKIN (by invitation), and EDWARD H. SOULE (by invitation), Rochester, Minnesota.

Esophageal Pain Related to Disturbed Motility.

By HENRY COLCHER (by invitation), JAMES A. L. MATHERS (by invitation), EDMUND N. GOODMAN (by invitation), and CHARLES FLOOD, New York, N.Y.

Electrical Activity of the Small Intestine.

By E. E. DANIEL (by invitation), A. DODD (by invitation), W. H. SUTHERLAND (by invitation), and A. BOGOCH (by invitation). Introduced by HENRY L. BOCKUS,

The Serum Glutamic Oxalacetic Transaminase (SGO-T) in the Differential Diagnosis of Acute Abdominal Catastrophies.

By T. DAVIS (by invitation), M. H. KALSER, and D. SELIGSON (by invitation), Philadelphia, Pennsylvania.

Diagnostic Pitfalls in Chronic Pancreatitis.

By HARVEY J. DWORKEN, CHESTER L. PLOTKIN (by invitation), and FRANKLIN H. PLOTKIN (by invitation), Cleveland, Ohio.

Effect of Drugs on Esophageal Motility and Esophageal Pain.

By CHARLES A. FLOOD, and SIDNEY FINK (by invitation), New York, N.Y.

A Comparison of the Usefulness of I<sup>131</sup> Triolein, Risa and Fat and Nitrogen Balance Techniques in the Diagnosis of Malabsorption.

By A. B. FRENCH, M. ISHIKAWA (by invitation), H. S. WIGGINS (by invitation), and H. M. POLLARD, Ann Arbor, Michigan.

Atypical Pancreatitis: Report of Five Cases.

By EARL E. GAMBILL, and JOHN B. GROSS (by invitation), Rochester, Minnesota.

Quantitation of Pepsin in Gastric Juice by Paper-Electrophoresis.

By GEORGE B. JERZY GLASS, LOUKIA STEPHANSON-LIOUNIS (by invitation), MARILYN RICH (by invitation), and SALLIE E. MITCHELL (by invitation). New York, N.Y.

Gastric Secretory Failure.

By GEORGE B. JERZY GLASS, LINN J. BOYD (by invitation), ROGER SMITH (by invitation), and SAUL A. SCHWARTZ (by invitation), New York, N.Y.

Electrogastrographic Studies in Patients with the "Dumping Syndrome."

By E. N. GOODMAN (by invitation), HENRY COLCHER (by invitation), and GEORGE M. KATZ (by invitation). Introduced by CHARLES FLOOD, New York, N.Y.

- The Study of Proteolytic Enzyme Activation and Inhibition as an Etiological Factor in Acute Pancreatitis.  
By RAYMOND GREGORY (by invitation), MARCEL PATTERSON, and IRA M. GOLDSTEIN (by invitation), Galveston, Texas.
- Effect of Using Injected Vein for Determination of Bromsulfalein Dye Retention.  
By EDWARD W. HAUCH (by invitation), Pomona, California. Introduced by GEORGE K. WHARTON, Los Angeles, California.
- The Electrical Potential of Isolated Human Gastric Mucosa.  
By NICHOLAS C. HIGHTOWER, JR. (by invitation), Temple, Texas. Introduced by G. GORDON MCHARDY, New Orleans, Louisiana.
- Agammaglobulinemia Associated with Nontropical Sprue: Report of Two Cases.  
By KENNETH A. HUIZENGA, and ERIC E. WOLLAEGER, Rochester Minnesota.
- Relationship of the Increased Iron Absorption and Storage in Secondary Hemochromatosis to Marrow Erythropoiesis.  
By G. KENT (by invitation), Chicago, Illinois, and H. POPPER, New York, N.Y.
- Experimental "Colitis": Schwartzman and Arthus Reactions in the Colon.  
By JOSEPH B. KIRSNER, and MOSHE B. GOLDGRABER (by invitation), Chicago, Illinois.
- Megaloblastosis Associated with Small Bowel Disease.  
By D. H. LAW (by invitation), C. M. LEWIS (by invitation), and MARVIN H. SLEISENGER, New York, N.Y.
- Onset of Idiopathic Chronic Ulcerative Colitis After Age 50.  
By D. H. LAW (by invitation), and MARVIN H. SLEISENGER, New York, N.Y.
- Increased Red Cell Destruction in Hepatic Cirrhosis.  
By J. CAWEIN MADISON (by invitation), ALBERT B. HAGEDORN (by invitation), and CHARLES A. OWEN (by invitation). Introduced by JESSE L. BOLLMAN, Rochester, Minnesota.
- A Comparison Between Three Commonly Employed Tests of Gastric Secretion.  
By I. N. MARKS (by invitation), and HARRY SHAY, Philadelphia, Pennsylvania.
- Calcium Metabolism in Pancreatic Diseases.  
By ALBERT I. MENDELOFF, and ALBERT SCHILLING (by invitation), Baltimore, Maryland.
- Prognosis in Pancreatitis.  
By SAMUEL MORRISON, and CLYDE B. COPE (by invitation), Baltimore, Maryland.
- Serum Cholesterol Esters and Intestinal Cholesterol Exchange in Patients with Obstructive Jaundice.  
By ESTEBAN PINEDA (by invitation), Boston, Massachusetts, SAMUEL CHENG (by invitation), and MALCOLM STANLEY, Louisville, Kentucky.

Gastroscopy by a Glass Fiber-Endoscope.

By MOSES PAULSON, and SAMUEL A. TALBOT (by invitation), Baltimore, Maryland.

Carcinoma of the Pancreas—A Diagnostic Challenge. Review of One Hundred Cases.

By EDWARD C. RAFFENSPERGER, Harrisburg, Pennsylvania.

A Preliminary Evaluation of a Rapid and Simple Technique for Screening Non-Tropical Sprue from Other Causes of Steatorrhea.

By C. E. RUBIN, L. L. BRANDBOG (by invitation), W. L. BEEKEN (by invitation), P. C. PHELPS (by invitation), EMIL JOBB, and WADE VOLWILER, Seattle, Washington.

The Gastric Acid Secretory Equivalent of Different Foods.

By SUZANNE SAINT-HILAIRE (by invitation), MARJORIE K. LAVERS (by invitation), and CHARLES F. CODE, Rochester, Minnesota.

Local Hydrocortisone in Ulcerative Colitis.

By RAPHAEL D. SCHWARTZ (by invitation), GEORGE L. COHN (by invitation), MURRAY BRODOFF (by invitation), SYDNEY SELESNICK, and HOWARD M. SPIRO (by invitation), New Haven, Connecticut.

Penetration of Experimental Gastric Ulcer on Cortisone Administration.

By STANLEY C. SKORYNA (by invitation), DAVID S. KAHN (by invitation), and D. R. WEBSTER, Montreal, Canada.

The Clinical Significance of Pancreatitis.

By FREDERICK STEIGMANN, Chicago, Illinois.

Mechanisms Involved in the Stimulating Action of the Stress Effect of Insulin Hypoglycemia on Gastric Secretion in Man.

By DAVID C. H. SUN, and HARRY SHAY, Philadelphia, Pennsylvania.

Recent Advances in Knowledge of Chemotherapy of Intestinal Helminthiases.

By CLYDE SWARTZWELDER (by invitation), and WILLIAM W. FRYE (by invitation). Introduced by G. GORDON MCHARDY, New Orleans, Louisiana.

Potassium Concentration in Histamine-Stimulated Gastric Juice of Man.

By J. LAWRENCE WERTHER (by invitation), and FRANKLIN HOLLANDER, New York, N.Y.

Skin Test for Amebiasis (A Preliminary Report).

By GEORGE K. WHARTON, and MARJORIE BIDDLE (by invitation), Los Angeles, California.

Scleroderma and Malabsorption Syndrome: Jejunal Biopsy and Clinical Studies.

By VICTOR WILLNER (by invitation), CHUNI WANG (by invitation), and DAVID ADLERSBERG, New York, N.Y.

Diminution of Gastric Hypersecretion during Psychoanalytic Psychotherapy in Patient with a Gastric Fistula.

By A. WINKELSTEIN, H. JANOWITZ, F. HOLLANDER, A. STEIN (by invitation), M. LEVY (by invitation), and M. R. KAUFMAN (by invitation), New York, N. Y.

# ANNUAL BANQUET

FRIDAY, MAY 30, 1958

COCKTAILS—7:30 P.M.

BANQUET—8:30 P.M.

SHERATON PARK HOTEL, WASHINGTON, D.C.

---

*Toastmaster*

CLIFFORD J. BARBORKA

---

PRESENTATION OF NEW MEMBERS

---

PRESENTATION OF THE JULIUS FRIEDENWALD MEDAL

to

A. H. AARON

by

SARA M. JORDAN

---

*Speaker*

THE HON. JOHN W. BRICKER

“Building A World Community”

---

MUSIC

## IN MEMORIAM

MANDRED W. COMFORT ..... Rochester, Minnesota

JOHN H. FITZGIBBON ..... Portland, Oregon

JOHN A. KILLIAN ..... New York, N. Y.

STOCKTON KIMBALL ..... Buffalo, New York

## Presidents of the Association

1897	C. G. Stockton	1928	Walter C. Alvarez
1898	D. D. Stewart	1929	Frank Smithies
1899	Max Einhorn	1930	Ludwig Kast
1900	Max Einhorn	1931	Clement R. Jones
1901	J. C. Hammeter	1932	Burrill B. Crohn
1902	J. C. Hammeter	1933	John Bryant
1903	S. J. Meltzer	1934	B. B. Vincent Lyon
1904	S. J. Meltzer	1935	Howard F. Shattuck
1905	H. W. Bettmann	1936	Ralph C. Brown
1906	H. W. Bettmann	1937	Chester M. Jones
1907	J. P. Sawyer	1938	Ernest H. Gaither
1908	J. Friedenwald	1939	Irvin Abell
1909	J. Friedenwald	1940	Andrew C. Ivy
1910	W. B. Cannon	1941	Russell S. Boles
1911	W. B. Cannon	1942	Sara M. Jordan
1912	J. Kaufmann	1943	Sara M. Jordan
1913	J. Kaufmann	1944	A. H. Aaron
1914	W. C. Bloodgood	1945	A. H. Aaron
1915	C. G. Stockton	1946	Walter L. Palmer
1916	W. G. Morgan	1947	Henry L. Bockus
1917	J. A. Lichty	1948	Albert F. R. Andresen
1918	W. A. Bastedo	1949	J. Arnold Bargaen
1919	T. R. Brown	1950	John C. Mateer
1920	Joseph Sailer	1951	T. Grier Miller
1921	A. A. Jones	1952	A. M. Snell
1922	G. B. Eusterman	1953	Julian M. Ruffin
1923	R. W. Mills	1954	Dwight L. Wilbur
1924	A. F. Chace	1955	Robert Elman
1925	Charles G. Lucas	1956	S. Allen Wilkinson, Jr.
1926	Franklin W. White	1957	Mandred W. Comfort
1927	George M. Piersol		

## Recipients of the Julius Friedenwald Medal \*

1941	Walter B. Cannon	1950	B. B. Vincent Lyon
1942	Max Einhorn	1951	Walter C. Alvarez
1943	Thomas R. Brown	1952	Sara M. Jordan
1944	A. J. Carlson	1953	Burrill B. Crohn
1945	Lewis Gregory Cole	1954	Albert F. R. Andresen
1946	Frank H. Lahey	1955	Frank Charles Mann
1947	George B. Eusterman	1956	Donald C. Balfour
1948	Franklin W. White	1957	T. Grier Miller
1949	Boris B. Babkin		

\*The Julius Friedenwald Medal is presented for outstanding achievement in gastroenterology.

## Memorial Lectures

- 1955 F. Avery Jones, London, England  
1956 John R. Brobeck, Philadelphia, Pennsylvania  
1957 Horace W. Davenport, Ann Arbor, Michigan

## OFFICERS



### *President*

MANDRED W. COMFORT, Rochester, Minnesota \*

### *President-Elect*

CLIFFORD J. BARBORKA, Chicago, Illinois

### *Vice-President*

H. MARVIN POLLARD, Ann Arbor, Michigan

### *Treasurer*

G. GORDON McHARDY, New Orleans, Louisiana

### *Secretary*

FRANZ J. INGELFINGER, Boston, Massachusetts

### *Members of the Council*

DWIGHT L. WILBUR, San Francisco, California  
JULIAN M. RUFFIN, Durham, North Carolina  
S. ALLEN WILKINSON, JR., Boston, Massachusetts

### *Committee an Admissions*

LEON SCHIFF, Cincinnati, Ohio  
DAVID CAYER, Winston-Salem, North Carolina  
WILLIAM F. LIPP, Buffalo, New York

\* Deceased: August 7, 1957.

SEVENTEENTH ANNUAL MEETING OF THE  
AMERICAN GASTROSCOPIC SOCIETY

SATURDAY, MAY 24 AT 8:15 A.M.

WEST BALLROOM, SHOREHAM HOTEL

*The Medical Profession is Cordially Invited.*

PRESIDENT'S ADDRESS

CLIFFORD J. BARBORKA (Chicago, Illinois)

Regurgitant Esophagitis

HERBERT W. SCHMIDT (Rochester, Minnesota)

An Introduction to Gastrofiberscope

N. S. KAPANY (Chicago, Illinois)

Duodenscopy and Esophagoscopy by Glass-Fiber-Endoscope

MOSES PAULSON and SAMUEL H. TALBOT (Baltimore, Maryland)

Studies on Gastric Diseases using Gastro-Camera

SADATAKA TASAKA and SHINROKU ASHIZAWA (Japan)

Color Gastrophotography with an Electric Flash

CH. DEBRAY and PIERRE HOUSSET (France)

Gastroscopic Photography in the Demonstration of Gastric Tumors

ROBERT NELSON (Houston, Texas)

Comparative Values of Colored Laparophotography and Biopsy  
Puncture in the Diagnosis of Hepatic and Biliary Diseases

JACQUES CAROLI (France)

Combined Gastroscopy and Direct Vision Biopsy

(a) Method and Application

P. E. THOMPSON HANCOCK

(b) Histological Findings

MARGOT SHINER (Great Britain)

A Multipurpose Instrument for Suction Biopsy of the Esophagus,  
Stomach and Small Bowel

CYRUS E. RUBIN, LLOYD L. BRANDBORG, H. PAUL NEWMAN,  
W. E. QUINTON (Seattle, Washington)

2:00 P.M.

Gastroenterology at the Walter Reed Army Medical Center: A  
Colored Television Presentation

Technical Advisor: COLONEL B. H. SULLIVAN, JR., M.C. (Wash-  
ington, D. C.)

Gastroscopic Diagnosis of Chronic Gastritis

N. HENNING (Germany)

Room  
501-F

Ad 4 0700  
Shoreham



Gastroscopic Biopsies

EDWARD B. BENEDICT (Boston, Massachusetts)

A Concept of Chronic Gastritis based upon the Study of Gastric Biopsy

EMMANUEL DEUTSCH (Boston, Massachusetts)

Clinical Significance of Chronic Inflammation of the Stomach and Small Intestine

RUDOLF SCHINDLER (Los Angeles, California)

*Discussion of the above four papers*

Gastric Ulcer as seen in Australia

JOHN HORAN (Australia)

Gastroscopic Findings in Advanced Cirrhosis

PABLO INIGUEZ (Dominican Republic)

*Discussion will be permitted according to time available during the program.*

*Dr. Siffert*

## AMERICAN GASTROSCOPIC SOCIETY

### Annual Banquet

Saturday, May 24, 1958

Cocktails—7:00 P.M.

Banquet—8:00 P.M.

---

SHOREHAM HOTEL, WASHINGTON, D. C.

*Toastmaster*

CLIFFORD J. BARBORKA

Presentation of New Members and Honorary Members

Presentation of the Schindler Award to

NORBERT HENNING,  
University of Erlangen,  
West Germany

*Speaker*

THE HONORABLE WILLIAM O. DOUGLAS  
Associate Justice, United States Supreme Court

---

Music

# GASTROENTEROLOGY RESEARCH GROUP

## Program of Spring Meeting

THURSDAY, MAY 29, 1958

WEST BALLROOM, SHOREHAM HOTEL, WASHINGTON, D.C.

1:30 P.M.

GENERAL SUBJECT—Physiology of exocrine pancreatic function.

MODERATOR—DR. MORTON I. GROSSMAN, V. A. Center, Los Angeles, California.

### PARTICIPANTS

PROF. J. EARL THOMAS, Dept. of Physiology, College of Medical Evangelists, Los Angeles, California.  
Collection of Pancreatic Juice.

PROF. LOWELL E. HOKIN, Dept. of Physiological Chemistry, University of Wisconsin, Madison, Wisconsin.  
In Vitro Studies of Pancreatic Tissue.

PROF. A. A. HARPER, Dept. of Physiology, University of Durham Medical School, Kings College, Newcastle-upon-Tyne, England.  
Enzyme Stimulation and Release.

PROF. J. ERIC JORPES and VICTOR MUTT, Karolinska Sjukhuset, Stockholm, Sweden.  
Secretion and Pancreozymin: Their Preparation and Properties.

6:00 P.M.—Social Hour and Dinner

WEST BALLROOM, SHOREHAM HOTEL

*All interested physicians and investigators are cordially invited to attend.*

Meeting of the  
**AMERICAN ASSOCIATION FOR THE STUDY OF  
LIVER DISEASES**

**SATURDAY, MAY 31, at 2:00 P.M.**

**MAIN BALLROOM, SHOREHAM HOTEL**

Panel Discussion on

**The Geographic Pathology of Cirrhosis**

Moderator—HANS POPPER (New York, N. Y.)

Participating—M. A. ARAFA (Egypt), F. P. ANTIA (India), J. CAROLI (France), GIORGIO DOMINICI (Italy), W. STANLEY HARTROFT (U.S.A.), G. A. MARTINI (Germany), M. PAYET (French West Africa), MARCELO ROYER (Argentina), BERNARDO SEPULVEDA (Mexico), SHEILA SHERLOCK (Great Britain), GERALDO SIFFERT (Brazil), IAN WOOD (Australia).

*W. M. Johnston*  
Panel Discussion on

*✓* **The Electron Microscope in the Study of Liver Disease**

*✗* Moderator—THOMAS C. CHALMERS (Boston, Mass.)

Morphology of the Normal Liver.  
DON W. FAWCETT (New York, N.Y.)

Liver Biopsies from Patients with Viral Hepatitis.  
KARL FELLINGER (Austria)

Discussion—FREDERIK B. BANG (Baltimore, Md.), BORIS GUEFT Cincinnati, Ohio)

## SCIENTIFIC TOURS

Five separate scientific tours have been arranged by the Committee on Medical Tours for the open period Thursday afternoon. Individual tours are limited in attendance, with total space available for some 800 registrants.

Transportation will be provided from the Sheraton Park Hotel. The outline of the tours follows. Interested registrants are urged to register for the tour they prefer at the Congress Registration Desk.

### SCHEDULE OF TOURS

Thursday, May 29, 1958

<i>Tour No.</i>	<i>Destination</i>	<i>Duration</i>	<i>Accommodation</i>
1	(a) Armed Forces Institute of Pathology	2 hours	150
	(b) Walter Reed Army Medical Center	2 hours	(in groups of 20)
2	(a) National Institutes of Health	1½ hours	150
	(b) Naval Medical Center, Bethesda	2 hours	150
3	Washington Hospital Center		100
4	Air Force Medicine Tour— Hospital at Andrews Field and aviation medicine orientation	2 hours	
		3 hours	50
5	Submarine Medicine Tour— Submarine medicine orientation and tour of a submarine	3 hours	50

-----  
Addendum to list of SCIENTIFIC EXHIBITORS—Page 55

- 425 Visualizing the Non-Visualized Gallbladder.  
J. RUSSELL TWISS, R. STERLING MUELLER, LEE GILLETTE (New York, N.Y.)
- 426 Sustained Release Medication in the Treatment of Gastrointestinal Disturbances.  
FREDERICK STIEGMANN, LUDWIG KAMINSKI (Chicago, Illinois)  
Aspirin and ACP Irritation of the Stomach: Incidence and Prevention by the Use of Aluminum Glycinate and Magnesium Carbonate.  
DAVID B. SHER (Jackson, Michigan)

## POST CONGRESS TOURS

The World Congress Post Convention Tour Committee has arranged three special tours for the benefit of our foreign visitors who may wish to make their visit to Washington into an informal medical sightseeing trip of the United States.

Congress members in all of the tour cities along the way have organized committees to welcome and entertain tourists during their stay in each stopover city, including Ann Arbor (Michigan), Boston, Buffalo, Chicago, Los Angeles, New York, Philadelphia, Pittsburgh, Portland, Rochester (Minnesota), Rochester (New York), San Francisco and Seattle.

Three tours have been arranged by the Shreve Travel Service and the world wide organization of the American Express Company. TOUR NUMBER ONE will include visits to Philadelphia, Boston, and New York City. TOUR NUMBER TWO will visit Pittsburgh, Chicago, Rochester (Minnesota), Ann Arbor, Buffalo, Rochester (N.Y.) and New York. TOUR NUMBER THREE will go to Pittsburgh, Chicago, Grand Canyon, Los Angeles, San Francisco, Portland, Seattle, Lake Louise, Banff, Buffalo and New York.

Tour chairman Dr. Hilton S. Read of Atlantic City, N.J., reports that host committee members in the various cities will take complete responsibility for your entertainment and enjoyment during each visit. Special shopping and sightseeing expeditions will be arranged in each stopover for wives and families while physician colleagues visit scientific installations.

All tours are planned to travel by first class railroad accommodations. For those physicians and their wives who do not have the time available to make a leisurely, vacation type "busman's holiday," air travel is available to each of the cities on the schedule. Traveling by air will involve making special arrangements, however. Such arrangements can be made by contacting the American Express Travel Service office in Washington. Special Post Convention Tour brochures are available at the registration desk. For further information please contact Dr. Hilton Read through the Congress registration desk.

## ACKNOWLEDGMENTS AND DONORS

The Central Committee of the World Congress of Gastroenterology wishes to express its appreciation to the following persons and organizations for their interest and support.

Abbott Laboratories	Nordmark Pharmaceutical Laboratories
American Cancer Society	Northwest Orient Airlines
American Gastroenterological Association Membership	Pharmacia Laboratories Inc.
Ames Company Inc.	Pfizer Laboratories
Arner Company	Pfizer International
Mr. Irving Berger	Wm. P. Poythress & Company
Bristol Meyers, Inc.	Purdue Frederick Company
Burton, Parsons & Company	Radio Corporation of America
Burroughs Wellcome Fund	A. H. Robins Company Inc.
Council for International Organization of Medical Sciences (subsidized by World Health Organization and UNESCO)	William H. Rorer Inc.
Eaton Laboratories	Sandoz Company
Ford Motor Company	W. B. Saunders Company
General Motors Corporation	Schering Corporation
Mr. Peter Grace	G. D. Searle & Company
Mr. E. C. Gerstein	Smith, Kline & French Laboratories
Hoffmann-La Roche Inc.	Southern California Society of Gastroenterology
International Business Machines Corporation	E. R. Squibb & Sons
Kellogg Foundation	Tourist and Convention Bureau, Washington, D. C. Board of Trade
Joseph P. Kennedy Jr. Foundation	Mr. Samuel Ungerleider
Lakeside Laboratories	University of Colorado Postgraduate School of Medicine
Lederle Laboratories	U. S. Vitamin Corporation
Eli Lilly & Company	Warren-Teed Products Company
McNeil Laboratories	Warner Chilcott Laboratories
Mead, Johnson Company	Wellcome Trust, London, England
Mennen Company	William and Rose Gluckin Charitable Foundation Inc.
Merck, Sharp and Dohme	Williams & Wilkins Company
William S. Merrell Company	Wine Growers of California
Miles-Ames Laboratories	Wyeth Laboratories
National Cancer Institute	
National Institute of Arthritis and Metabolic Disease	

The Committee wishes to express its thanks to The Sisters of Mercy, St. Joseph Mercy Hospital, Ann Arbor, Michigan, for office accommodation and many considerations afforded the secretarial staff and members of the committee.

## COMMERCIAL EXHIBITS

The outstanding chemical, pharmaceutical and technical manufacturers are participating in this exhibition. The field of nutrition is well represented. The diagnostic aids in medical, surgical and therapeutic fields are included. Roentgenologic exhibits of advances in this science as well as specialized laboratory equipment and many medical publications will be on display. The exhibits include:

- |                                          |                                              |
|------------------------------------------|----------------------------------------------|
| Abbott Laboratories                      | E. Miltenberg, Inc.                          |
| American Cystoscopic Makers Inc.         | Nordmark Pharmaceutical<br>Laboratories Inc. |
| Ames Company Inc.                        | Parke Davis & Company                        |
| Audio Digest                             | Pepsi Coal Company                           |
| Ayerst Laboratories                      | Pharmacia Laboratories Inc.                  |
| Burton, Parsons & Company                | Purdue Frederick Company                     |
| Burroughs Wellcome & Company             | R. J. Reynolds Tobacco Company               |
| Eder Instrument Company                  | Rittenhouse Book Store                       |
| Eaton Laboratories                       | A. H. Robins Company Inc.                    |
| Encyclopedia Britannica                  | Roche Laboratories                           |
| Geigy Pharmaceuticals                    | William H. Rorer Inc.                        |
| General Foods Corporation                | Sandoz Company                               |
| Grune and Stratton                       | W. B. Saunders Company                       |
| Eli Lilly Company                        | Schering Corporation                         |
| Paul B. Hoeber Inc.                      | G. D. Searle & Company                       |
| Intercontinental Medical Book<br>Company | Smith, Kline & French Laboratories           |
| Kellogg Company                          | E. R. Squibb & Sons                          |
| Lloyd Brothers Inc.                      | R. J. Strassenburgh & Company                |
| Mead Johnson & Company                   | U. S. Vitamin Corporation                    |
| Medical Dental Photo                     | Wallace Laboratories                         |
| Merck, Sharp & Dohme                     | Warner-Chilcott Laboratories                 |
| William S. Merrell Company               | The Williams & Wilkins Company               |
| Metro-Tec Scope Makers                   | Wyeth Laboratories                           |
| Miles Reproducer                         |                                              |

# PROGRAM PARTICIPANTS

- Aaron, A. H., 35  
 Abadie, S. H., 53  
 Acevedo G., F., 25  
 Achor, R. W. P., 54  
 Adlersberg, D., 33  
 Agoaoli, L. O., 54  
 Akagi, M., 26  
 Aktan, H. S., 53  
 Albacete, R. A., 37  
 Alessandri, H., 27  
 Almy, T. P., 30, 63  
 Althausen, T. L., 35  
 Amdrup, E., 41  
 Ammann, R. W., 39  
 Anthony, S. O., 53  
 Antia, F. P., 75  
 Aoyama, S., 26  
 Andersen, D. H., 30  
 Anderson, C. M., 30  
 Andresen, A. F. R., 36  
 Anido, V., 37  
 Antia, F. P., 30  
 Aparecida P., A., 41  
 Arafa, M. A., 27, 75  
 Araujo, A., 25  
 Arcos P. M., 38  
 Arevalo, G., 39  
 Arias, I. M., 61  
 Arianoff, A. A., 28  
 Armos C., R., 34  
 Arnold, T., 54  
 Arroyave, G., 33  
 Artigas, J., 34  
 Ashbel, D., 29  
 Ashizawa, S., 72  
 Aste, G., 26  
 Ayral, M. N., 39  
  
 Bachrach, W. H., 30, 54, 55  
 Baker, J., 56  
 Bang, F. B., 75  
 Banks, B. J., 62  
 Banner, R., 40  
 Baratgin, B., 25  
 Barborka, C. J., 36, 54, 63, 72  
 Barfred, A., 29  
 Bargen, J. A., 38, 64  
 Barron, J., 41  
 Barroso, E., 28  
 Bartholomew, L. G., 56, 62  
 Barzelatto, J. J., 26  
 Basnuevo, J. B., 34  
 Batson, H. M., Jr., 54  
 Bean, W. B., 36  
 Behar, M., 33  
 Benedict, E. B., 40, 73  
 Bercovitz, Z. T., 27, 39  
 Berg, H. H., 44  
 Berge, K. G., 54  
 Bergmann, F., 27  
 Berk, J. E., 28  
 Berlin, H., 54  
 Berlin, R., 54  
 Berman, C., 33  
 Bernier, J. J., 40  
 Berning, H., 27  
 Bernstein, J. S., 63  
 Berry, D. M., 31  
 Bertin, J., 27  
 Bertoni, G., 38  
 Bertran, C., 39  
 Best, C. H., 33  
 Bétourné, Cl., 27  
 Beye, H. K., 55  
 Biel, F., 26  
 Biempica, L., 39  
 Billington, B. P., 30  
 Birnbaum, D., 27  
 Bishop, R. C., 55  
 Blomstrand, R., 33  
 Bockus, H. L., 24, 31, 36, 53,  
 62  
 Boerrigter, A. H. J., 36  
 Bogoch, A., 26  
 Bogusz, J., 36  
  
 Boles, R. S., 44, 64  
 Bollner, R., 25  
 Bollman, J. L., 31, 53, 61  
 Bolt, R. J., 39, 53  
 Bonadies, A., 40  
 Bonifis, S., 25, 40  
 Booth, C. C., 31  
 Borland, J. L., 27  
 Bourne, W. A., 44  
 Bove, P., 28  
 Boyd, L. J., 61  
 Brahms, S. A., 55  
 Brandborg, L. L., 72  
 Brante, G., 54  
 Bras, G., 31  
 Brasfield, R., 56  
 Brea, A. R., 38  
 Bret, P., 28  
 Brette, R., 28  
 Brick, I. B., 36  
 Broders, A. C., Jr., 54, 55  
 Bronk, D., 36  
 Brooke, B. N., 29, 64  
 Brooke, M. M., 34  
 Brown, C. H., 53, 56, 61  
 Brown, C. L., 30  
 Browne, D. C., 27  
 Bucaille, M., 36  
 Budd, J. J., Jr., 62  
 Bulbulian, A. H., 54  
 Burge, H., 41  
 Burger, A., 25  
 Burrows, B. A., 61  
 Butt, H. R., 53, 61  
 Butterworth, C. E., Jr., 33, 54  
 Bykov, K. M., 25  
  
 Cabanne, E., 39  
 Cabré Fiol, V., 40  
 Cachin, M., 37  
 Caira, E. G., 28  
 Calame, A., 28, 56  
 Calarescu, F. R., 31  
 Candia C., E., 27  
 Caputto, R., 26  
 Caravati, C. M., 25  
 Card, W. I., 26  
 Caroli, J., 33, 55, 72, 75  
 Carruth, C., 54  
 Carson, C. B., Jr., 53  
 Cattani, R., 36  
 Cattell, R. B., 28, 64  
 Causa, A., 32  
 Cave, H. W., 39  
 Cayer, D., 41  
 Chalmers, T. C., 62, 75  
 Chanarin, I., 31  
 Charbonnier, A., 29  
 Cherigie, E., 39, 57  
 Christensen, N. A., 54  
 Cicognani, The Most Rev.  
     Amleto G., 24  
 Clark, A. M., 56  
 Clejan, L., 41  
 Clemmesen, J., 44  
 Coco, L. J., 53  
 Code, C. F., 63  
 Coggeshall, L. T., 40  
 Cohn, I., Jr., 64  
 Cokdegerli, M., 39  
 Cole, W., 41  
 Colombato, L., 26  
 Colp, R. M., 25  
 Comanduras, P. D., 39  
 Concannon, J. P., 31  
 Constantinescu, S., 41  
 Conte, M., 37  
 Cooke, W. T., 33  
 Crile, G., Jr., 40  
 Crohn, B. B., 31, 64  
 Crosby, W., 54  
 Csillag, I., 36  
 Cullinan, E. R., 38  
 Culver, P. J., 30  
 Cummins, A. J., 33  
  
 Cutait, D. E., 44  
  
 Dagradi, A., 41  
 Daigard, J. B., 30  
 Dambassis, J. N., 29  
 Daniel, E. E., 26  
 Darnaud, C., 32  
 Da Silva, J. R., 28  
 Dauphin, P., 40  
 Davidson, C. S., 33  
 Davis, W. D., Jr., 54  
 Dearing, W. H., 34  
 Debray, Ch., 29, 72  
 De Groote, J., 32  
 De Jesús, J. A., 39  
 Dekkers, H. J. N., 36  
 De La Vega, J. M., 25  
 De Mattos, B., P., 44  
 Demling, L., 32  
 De Moura Campos, C., 41  
 Denard, Y., 32  
 De Paola, D., 28  
 De Prado, C., 40  
 De Schepper, P., 32  
 De Sousa Pereira, A., 30  
 Deutsch, E., 73  
 Devereaux, R. G., 54  
 Diamant-Berger, L., 55  
 Dias, L., 28  
 Diaz B., L. A., 28  
 Diaz E., S., 39  
 Dieckstein, S., 27  
 Diez C., J. R., 53  
 Doerr Z., E., 38  
 Dominici, G., 38, 75  
 Donaldson, R., 62  
 Doniach, I., 33, 54  
 Donoso, A., 27  
 Dooner, H., 27  
 Douthwaite, A. H., 26  
 Drabkin, D. L., 62  
 Dreiling, D. A., 28, 62  
 Dubarry, J. J., 30  
 Dubin, I. N., 38  
 Ducci, H., 33  
 Duhamel, J., 30  
 Dulgheru, C., 41  
 Dunlphy, E., 62  
 Dunphy, J. E., 41  
 Dzieciolowski, Z., 28  
  
 Ebin, L., 61  
 Eckmann, L., 40  
 Edwards, H. C., 36  
 Elliott, D. W., 30  
 Elsdon-Dew, R., 35  
 Englert, E., Jr., 61  
 Enriquez, D., 28  
 Erthal, A. J., 28  
 Ecoteguy, J. A., 28  
 Espinoza, J., 37  
 Estapé, C. A., 39  
 Estremadoyro, O., 39  
 Eusterman, G. B., 25  
 Ewing, W., 34  
  
 Fahrlander, H., 25  
 Faiguenbaum, J., 27  
 Falla A., L., 34, 37  
 Fallis, L. S., 41  
 Fanganiello, M., 44  
 Farrar, J. T., 63  
 Faust, E. C., 34  
 Fawcett, D. W., 75  
 Feigelson, H. H., 30  
 Fellingner, K., 75  
 Ferguson, L. K., 41  
 Ferrarini, E., 44  
 Finkelstein, A., 63  
 Fischman, M., 40  
 Flagge, G. W., 39  
 Fletcher, R. F., 54  
 Flood, C. A., 29  
 Fogarty, The Hon. John E., 36  
 Forell, M. M., 32  
 Fóti, M., 30



- Fournier V., R., 35  
 Fraga, C., 32  
 Francaviglia, A., 39  
 Frazer, A. C., 33, 54  
 Frejomil, E., 27  
 French, A. B., 30, 53  
 French, J. M., 33  
 Friedrich, L., 37, 54  
 Frobose, A. S. 39  
 Froelich, A. L., 30  
 Frumusan, P., 36  
 Frye, W. W., 35, 53  
 Fuenzalida, J. M., 34  
  
 Gadek, R. J., 55  
 Gagliardi, R. A., 30  
 Galindo, L., 31  
 Gallart Mones, F., 24  
 Garcia P. M. R., 28  
 Garlock, J. H., 39  
 Garrido Klinge, G., 25  
 George, G. P., 55  
 Gibbs, J. O., 54  
 Gibson, J., 37  
 Gillette, L., 76  
 Giraud, M., 28  
 Girolami, M., 38  
 Glass, G. B. Jerzy, 40, 61  
 Glass, H., 54  
 Goffin, R., 44  
 Goldbarg, J. A., 62  
 Goldgraber, M. B., 39  
 Goldstein, F., 31  
 Gonzalez B., C., 40  
 Gonzalez, G., 28  
 Gonzalez R., A., 38  
 Gorlin, R., 54  
 Gramiak, R., 55  
 Grandjean, L. C., 40  
 Gray, S. J., 30, 62  
 Green, P. A., 32  
 Greenberg, E., 55  
 Groen, J. J., 36, 44  
 Gromotka, R., 32  
 Grossman, M. I., 26, 62, 74  
 Gruenstein, M., 26  
 Gueft, B., 75  
 Gutmann, R. A., 44  
 Gyorgy, P., 31, 34  
  
 Haenszel, W. M., 40  
 Hafter, E., 25, 37  
 Halsted, J. A., 61  
 Hampton, J., 54  
 Hancock, P. E. Thompson, 72  
 Hanger, F. M., 37  
 Hanson, N. O., 54  
 Harper, A. A., 26, 74  
 Harper, H. A., 54  
 Harris, M., 54  
 Harris, M. L., 62  
 Hartroft, W. S., 75  
 Havens, W. P., 37  
 Haverback, B. J., 64  
 Hawkins, C. F., 33  
 Hawthorne, H. R., 39  
 Hebert, J. R., 53  
 Heimlich, H. J., 41, 57  
 Heinrich, H. C., 31  
 Heller, J. R., 44  
 Hendrix, T. R., 62  
 Henley, K. S., 62  
 Henning, 61, 72  
 Henrard, E. H., 28  
 Hernandez M., F., 33, 39  
 Hess, W., 25  
 Hetényi, G., 36  
 Heuper, W., 45  
 Hightower, N. C., 41, 54  
 Hill, K. R., 31  
 Hill, M., Sr., 57  
 Hillemand, P., 39  
 Hines, C. R., 56  
 Hinton, J. W., 63  
 Hirayama, C., 26  
 Hodges, F. J., 40  
 Hoffbauer, F. W., 33  
 Hoffman, H. N. II, 53  
  
 Hokin, L., 74  
 Hollander, F., 26  
 Holinger, P. H., 55  
 Horan, J., 73  
 Housset, P., 72  
 Howard, J. T., 38  
 Hunt, J. N., 26  
 Hunt, T. C., 24  
 Hunt, W. H. III, 54  
  
 Ihre, B. J. E., 37  
 Ikemi, Y., 26  
 Ikeya, J., 63  
 Ingelfinger, F. J., 26, 61  
 Iniguez, P., 73  
 Isselbacher, K., 61  
 Ivy, A. C., 26  
 Iwatsuru, R., 40  
  
 Jackson, W. P. U., 39  
 Jacome, J. A., 40  
 Jacot, A., 33  
 Jacot, C., 33  
 Janowitz, H. D., 28, 62  
 Javor, T., 26  
 Jellinek, H., 36  
 Jimenez D., C., 33  
 Johnson, T. A., 31, 44  
 Johnson, V., 35  
 Johnston, K. C., 55  
 Jones, Charles, 34  
 Jones, Chester, 33, 63  
 Jones, F. Avery, 25  
 Jordan, S. M., 25, 64  
 Jorgensen, J. B., 41  
 Joron, G., 34  
 Jorpes, E., 74  
 Jose, I. B., 40  
  
 Kalsler, M. H., 31, 63  
 Kaminski, L., 76  
 Kapany, N. S., 72  
 Kaplan, L., 54  
 Kapp, H., 35, 40  
 Kark, R. M., 34, 39  
 Kato, I., 40  
 Katz, R., 33  
 Kay, A. W., 36  
 Kayhoe, D. E., 55  
 Kidd, C., 26  
 Kiefer, E. D., 41  
 Kim, K. S., 26  
 King, E. R., 53  
 King, R. C., 38  
 Kirsner, J. B., 29, 39, 53, 64  
 Kleckner, M. S., Jr., 31  
 Kleeberg, J., 29  
 Kline, H. M., 35  
 Klotz, A. P., 31, 53  
 Knight, W. A., Jr., 62  
 Knyier, P. J., 44  
 Koelle, G. B., 35  
 Kohan, S., 26  
 Komarov, S. A., 53  
 Koppisch, E., 31  
 Korst, D. R., 55  
 Kramer, P., 63  
 Kramer, S., 31  
 Kubanyi, E., 56  
 Kuhn, E., 27  
 Kurokawa, T., 30  
 Kuzmicki, R., 28  
  
 Lambling, A., 25, 40  
 Lampert, R., 53  
 Lane, A. Z., 28  
 Laszlo, B., 37  
 Laumonier, R., 29  
 Laurens, H., 55  
 Lavin, R., 54  
 Le Breton, E., 32  
 Lecannelier, S., 26  
 Le Canuet, R., 29  
 Lee, J., 54  
 Lefèvre, A., 26  
 Lega S., J., 27  
 LeGolvan, P. C., 38  
 Lerner, J., 26  
  
 Levrat, M., 28  
 Levy, J. S., 27  
 Levy, S. H., 30  
 Lieber, Ch. S., 26  
 Lieberman, V., 54  
 Lierner, M., 54, 63  
 Lima B., E., 44  
 Lindenschmidt, T., 29  
 Linton, R. R., 37  
 Lipp, W. F., 40  
 Liscia, G., 27  
 Lucas, C. C., 33  
 Lumb, G., 39  
 Lundh, G., 41  
  
 Machella, T. E., 36, 63  
 Maisin, J., 44  
 Mallet-Guy, P., 28, 57  
 Marcial R., R. A., 29  
 Marina, C., 33  
 Marion, D. F., 34  
 Marks, I. N., 53  
 Marshak, R. H., 55  
 Martinez P., G., 31  
 Martinez Y., M. A., 28  
 Martini, G. A., 37, 75  
 Masek, J., 27  
 Masson, M., 27  
 Masuda, M., 27  
 Mateer, J., 35  
 Matos, M. A., 25  
 Matsunaga, F., 39  
 Maxfield, W. S., 53  
 McCorkle, H. J., 54  
 McGivney, J., 54  
 McHardy, G. C., 35, 64  
 McKenna, R. D., 32  
 McNeer, G., 40  
 Medina, R., 29  
 Mendes, T. Figueiredo, 28  
 Menghini, G., 38 56  
 Mensh, M., 35  
 Mersheimer, W. L., 61  
 Messini, M., 38  
 Meza, C., 37  
 Milanese, F., 33  
 Miller, J. H., 53  
 Miller, T. G., 35  
 Mirizzi, P. L., 29  
 Mitchell, S. E., 40  
 Miyazaki, I., 28, 56  
 Moeller, H. C., 54  
 Mogen, H. G., 44  
 Molina, R., 30  
 Mollin, D. L., 31  
 Monroe, L. S., 53  
 Monson M., C., 56  
 Monteiro, C., 41, 57  
 Montenegro, B., 24, 56  
 Montenegro, E. B., 44  
 Montgomery, D. A. D., 37  
 Moore, G., 45  
 Moreau, G., 32  
 Moreno, A. L., 57  
 Morlock, C. G., 62  
 Morrow, G. W., Jr., 54  
 Muehrcke, R. C., 39  
 Mueller, R. S., 76  
 Muhlaisen, J. P., 53  
 Munoz, J., 26  
 Munoz, K. R., 56  
 Munoz M., A. C., 37  
 Munoz R., 29  
 Murphy, L. C., 38  
 Munzer, D., 29  
 Mutt, V., 74  
  
 Nagy, E., 37  
 Najarian, J. S., 54  
 Necheles, H., 26  
 Neefe, J. R., 37  
 Neghme, A., 27  
 Nelson, R. S., 72  
 Nemir, P., Jr., 62  
 Neter, E., 34  
 Neumayr, A., 32  
 Newman, H. P., 72  
 Nijamkin, A., 37

- Nimeh, W., 38  
 Niwayama, G., 28  
 Ogura, K., 40  
 Olin, W., 54  
 Oliver P., E., 32  
 Olmos C., A., 28  
 Oló García, R., 40  
 Orellana A., J. M., 38  
 Orrego M., H., 37  
 Oviedo B., J. M., 41  
 Pack, G., 40, 56  
 Palmer, W. L., 25, 39, 53, 62  
 Paredes, L., 27  
 Parparcen, J. V., 25  
 Parrochia, E., 34  
 Paschoud, H., 32, 56  
 Patek, A. J., Jr., 37  
 Patterson, C. O., 36  
 Patterson, M., 54  
 Paulley, J. W., 31  
 Paulson, M., 72  
 Payet, M., 75  
 Pelaez C., M., 39  
 Pena C., A., 53  
 Pena, L. R., 25  
 Pequignot, G., 33  
 Peralta, O., 34  
 Perez F., E., 38  
 Perez S., E., 33  
 Fessel, J. F., 39  
 Pfuhl N., D., 41  
 Philippu, A. J., 27  
 Pi-Figuera, J., 41  
 Pincus, I. J., 31  
 Pineda, A., 38  
 Pineda, E. P., 62  
 Pisot, Ch., 30  
 Plainos, T., 27  
 Plasencia, R., 32  
 Pleticka, S., 53  
 Pollak, V. E., 39  
 Pollard, H. M., 37, 39, 53, 62  
 Fomeranze, J., 55  
 Pontes, J. F., 41  
 Pope, L. J., 30  
 Popper, H., 37, 61, 75  
 Pover, W. F., 54  
 Pucci, H., 27  
 Puletti, E., 54  
 Pulvertaft, C. N., 29  
 Quinton, W. E., 72  
 Raffucci, F. L., 28  
 Raghaven, P., 25  
 Ragheb, M., 27  
 Rakston, D. E., 54  
 Ramirez B., C. M., 31  
 Ramos, M., 44  
 Ramsey, G., 55  
 Rappaport, M., 39  
 Raskin, H. F., 53  
 Ravdin, I. S., 44  
 Redondo, O., 37  
 Reichman, S., 54  
 Reiman, S., 40  
 Rich, M., 40  
 Richmond, V., 26  
 Rider, J. A., 54  
 Rigler, L., 44  
 Rivadeneyra, F., 26  
 Riveros, M., 39  
 Rivers, J. S., 38  
 Robertson, P. E., 53  
 Rodgers, H., 35, 37  
 Rodriguez O., A., 31  
 Roguski, J., 37  
 Rojas, P. P., 26  
 Romeo, J. M., 33  
 Roth, J. L. A., 31, 41, 53  
 Rouse, M. O., 28  
 Roux, M., 29  
 Royer, M., 26, 39, 75  
 Rubin, C. E., 72  
 Ruffin, J. M., 30  
 Rufin, F., 34  
 Rutenberg, A. M., 62  
 Sahig, V., 54  
 Salazar, S., 28  
 Salit-Aleksandrowicz, E., 40  
 Sammons, H. G., 54  
 Sandweiss, D. J., 30  
 Santos C., S., 27  
 Sanz, C. J., 37  
 Sappenfield, R. W., 53  
 Sappington, T. S., 26  
 Sarian, N. N., 63  
 Sarles, H., 29  
 Sarnoff, D., 24  
 Satapanakul, C. S., 32  
 Sato, H., 40  
 Schayer, R. W., 26  
 Schiff, L., 38  
 Schindler, R., 40, 73  
 Schmid, R., 61  
 Schmidt, E., 31  
 Schmidt, F. W., 31  
 Schmidt, H. W., 72  
 Schneider, R., 54  
 Schor, I., 41  
 Scratcherd, T., 26  
 Scribner, B., 56  
 Scrimshaw, N., 33  
 Segal, H. L., 55  
 Segal, S., 56  
 Seifer, H., 41  
 Seligson, D., 31  
 Selye, H., 55  
 Sepulveda, B., 34, 75  
 Shaw, B., 54  
 Shay, H., 26, 53, 62  
 Sher, D. B., 76  
 Sherlock, S., 34, 75  
 Shiner, M., 33, 54, 72  
 Shingleton, W. W., 63  
 Siffert, G., 25, 75  
 Sifre, R., 39  
 Siguier, F., 27  
 Silveira, R., 27  
 Sjoberg, S-G., 54  
 Skoryna, S. C., 28  
 Smith, H. W., 54  
 Smith, L. A., 54  
 Smith, R. B. W., 54  
 Smith, W. O., 26  
 Snell, A. M., 33  
 Snorf, L., 35  
 Soler, R., 37  
 Som, M. L., 55  
 Sotgiu, G., 31  
 Sparchez, T., 41  
 Spencer, F. M., 53  
 Spies, T., 32  
 Standaert, L., 39  
 Stapler, N., 39  
 Steigmann, F., 76  
 Stein, G. N., 53, 63  
 Stempien, S. J., 41  
 Stephanson-Liouinis, L., 40  
 Sterling, J. A., 54, 56  
 Stetten, D., Jr., 30  
 Stewart, H. L., 45  
 Stinson, J. C., 54  
 Stoichita, S., 41  
 Stokes, J., 31  
 Storaasli, J. P., 54  
 Strittmatter, W. C., 53  
 Stuart, K. L., 31  
 Suarez, R., 32  
 Sullivan, B. H., Jr., 29, 38, 54, 72  
 Sun, D. C. H., 26  
 Sutherland, W. H., 26  
 Svartz, N., 34  
 Swader, J., 54  
 Swartzwelder, J. C., 53  
 Tacorian, S., 41  
 Talbot, S. H., 72  
 Tanner, N. C., 41  
 Tasaka, S., 72  
 Tashev, T. A., 37  
 Taylor, J., 34  
 Tazaki, Y., 45  
 Tejada, C., 33  
 Templeton, F. E., 64  
 Texter, E. C., Jr., 54, 63  
 Texter, E. C., Jr., 54, 61  
 Thomas, J. E., 26, 74  
 Thompson, C., 28  
 Thompson, H. L., 36  
 Tidmarsh, J. C., 35  
 Tonkin, R. D., 29  
 Trowsley, H. A., 35  
 Tristan, T. A., 55  
 Truelove, S. C., 39  
 Tumeno, H., 31, 37  
 Turnbull, R., 57  
 Tuyns, A., 44  
 Twiss, J. R., 28, 76  
 Ueda, H., 37  
 Ujohn Company, 56  
 User, T. E., 37  
 Valdes D., A., 53  
 Vane, J. R., 41  
 Van De Kamer, J. H., 33  
 Vandenbroucke, J., 28  
 Vantrappen, G., 54, 63  
 Van Wayjen, R. G. A., 44  
 Varay, A., 27  
 Varela F., B., 38  
 Varro, V., 26  
 Véghelyi, P. V., 32  
 Velasco, M., 33  
 Velez, E. I., 29  
 Versteeg, M., 57  
 Vidal C., H., 40  
 Vilardeff, F., 40  
 Villa, F., 54  
 Viranuvatti, V., 32  
 Voisin, R., 32  
 Volwiler, W., 34, 61  
 Wagner, H., 26  
 Waldenstrom, J., 64  
 Walter, K. E., 62  
 Walters, W., 29  
 Warren, K. W., 63  
 Waterlow, J., 34  
 Watkinson, G., 29  
 Watson, C. J., 31  
 Watson, J. S., 55  
 Waugh, J. M., 56, 63  
 Weber, H. M., 63  
 Webster, D. R., 28  
 Weeke, A., 37  
 Weijers, H. A., 33  
 Weinberg, J. A., 41  
 Weinberg, S. A., 55  
 Werlinger, J., 26  
 Werthemann, A., 25  
 Wharton, G. K., 64  
 Whately, O. T., 44  
 Whitcomb, F. F., Jr., 53  
 White, R. R., 54  
 Wiebenga, A. H., 29  
 Wiggins, H. W., 62  
 Wilbur, D. L., 33  
 Wildhirt, E., 38  
 Wilgram, G., 33  
 Wilhelmj, C. M., 26  
 Wilkinson, S. A., Jr., 63  
 Willebrands, A. F., 44  
 Willenegger, H., 44, 56  
 Williams, S. F., 53  
 Willink, J. W. T., 36  
 Winkelstein, A., 36, 53  
 Wissmer, B., 25  
 Wollaeger, E. E., 32  
 Wolf, B. S., 55  
 Wolf, S., 26, 55  
 Womack, N. A., 64  
 Wood, I. J., 34, 75  
 Wroblewski, F., 38, 62  
 Yarema, W. A., 53  
 Yoshida, T., 31  
 Young, G., 54  
 Zaino, C., 55  
 Zollinger, R. M., 30  
 Zoloff, R., 30  
 Zubiran, S., 34

Summary -

of Cancer diagnosis (Stomach)

~~most~~ soap to present techniques adequate.

must eventually depend on chemistry & physics to solve the problem of diagnosis

\* Stomach Ca in USA, is ropping

fast <sup>20 to 30%</sup> since 1925  
do anything about it. <sup>our puny efforts to</sup>  
George Moore of Buffalo.

(look up  
epidemiology  
abstracts  
for talk in  
August)