



# Student Guide

université  
PARIS-SACLAY





# CONTENTS

- A word from the Vice-President of Educational Innovation and Student Life and the Vice President for University Life - P.4
- A word from the Student Vice-President - P.5

## **AN INTRODUCTION TO UNIVERSITÉ PARIS-SACLAY**

- About Université Paris-Saclay - P.8
- Key figures - P.9
- Governance - P.10
- Student elected representatives - P.11
- Graduate network - P.12

## **BECOMING A STUDENT AT UNIVERSITÉ PARIS-SACLAY**

- Enrollment - P.15
- Student and Campus Life Contribution - P.19
- Student card - P.20

## **STUDYING AT UNIVERSITÉ PARIS-SACLAY**

- General introduction to the courses - P.24
- Undergraduate courses - P.26
- Engineering and *Grandes Écoles* courses - P.32
- Master's courses - P.34
- Health studies - P.38
- Magistères (Senior vocational diplomas) - P.39
- University Diplomas - P.40
- Work-study courses - P.41
- Continuing Education / Accreditation of prior learning - P.42
- Phds - P.43

## **MAKING A SUCCESS OF YOUR STUDIES AND PREPARING FOR YOUR FUTURE**

- Student success and graduate outcomes - P.48
- Direction and development of your research project - P.49
- Student entrepreneurship - P.51
- Professional integration, Partnerships and Alumni - P.52
- Student Jobs, Tutoring and Civic Service - P.53
- Language learning - P.54
- International mobility - P.55

## **LIVING AT UNIVERSITÉ PARIS-SACLAY**

- Arts and culture - P.60
- Science and society - P.61
- Sport - P.62
- Student Centre - P.63
- Community life - P.64
- Digital services - P.65
- Libraries - P.67
- Catering - P.69
- Accommodation - P.70
- Health - P.72
- Protective measures - P.73
- Disability and studies - P.74
- Grants, financial and social assistance - P.75
- A committed and inclusive university - P.77
- Facilities to create, innovate and learn - P.78

## **THE UNIVERSITY**

- Jean Monnet Faculty (Law, Economics and Management) - P.82
- Faculty of Medicine - P.84
- Faculty of Pharmacy - P.86
- Faculty of Science - P.88
- Faculty of Sports Science - P.90
- Cachan Technical Institute (IUT) - P.92
- Orsay Technical Institute (IUT) - P.94
- Sceaux Technical Institute (IUT) - P.96
- Polytech Paris-Saclay - P.98
- CentraleSupélec - P.100
- AgroParisTech - P.102
- École normale supérieure Paris-Saclay - P.104
- Institut d'Optique Graduate School - P.106
- Université de Versailles Saint-Quentin-en-Yvelines - P.108
- Université d'Évry - P.110
- Glossary/List of abbreviations - P.112
- Index/Key words - P.115



**Professor Isabelle Demachy,**  
**Vice-President of Educational Innovation**  
**and Student Life**



**Professor Anne Guiochon-Mantel,**  
**Vice-President of Student Life**

## **A word from the Vice-President of Educational Innovation and Student Life and the Vice President for University Life**

**Welcome to Université Paris-Saclay - a world-class, multidisciplinary university.**

You are joining a community of students who have come from all over the world to enjoy a cutting-edge education in the three main scientific fields of life sciences and health, sciences and engineering, and humanities and social sciences.

**Our programmes of education** take into account the current challenges faced by our society, economic and societal issues and individual and collective challenges. We have created a variety of undergraduate courses (Undergraduate degrees, University Undergraduate Degrees in Technology, Vocational Undergraduate Degrees, Undergraduate Joint Degrees, Entry to Health Studies) which are backed by research and linked to the socio-economic world, as well as meeting the expectations of each and every one of you and training the citizens of tomorrow. You will also have the opportunity to find out about our specialist Graduate Schools which offer Master's, Engineering and PhD courses and which, with their international reputation, provide the best possible springboard into your professional integration.

**You will have access to 230 research laboratories for work placements,** PhDs and sometimes just for the pleasure of learning within the Université Paris-Saclay community, as well as support right from the start of your course from an academic community renowned for its excellence and commitment to their students.

**Today, Université Paris-Saclay comprises 10 member universities.** These include five faculties of education and research (in Law, Economics and Management, Medicine, Pharmacy, Sciences and Sport Science) three Technical Institutes in Cachan, Orsay and Sceaux, a Polytech University School of Engineering, and an Observatory for Sciences of the Universe.

**It also comprises 4 Grandes Écoles: CentraleSupélec, ENS Paris-Saclay, Institut d'Optique.** Graduate School and works in partnership with two universities - Université de Versailles Saint-Quentin-en-Yvelines and Université d'Evry. It is this network which fosters the excellence and diversity of the education provided for the undergraduate, Master's, Engineering and Health courses!

**Cultural and sports activities** in modern facilities and excellent and wide-ranging programmes are available on the various Université Paris-Saclay campuses in partnership with prestigious organisations. Université Paris-Saclay is aware that a good student life experience contributes to your integration and personal growth. To this end, the University supports student initiatives through active associations and numerous events on the different campuses. The University is strongly committed to supporting students with disabilities, to combating all forms of discrimination and to respecting diversity.

You will be entering a vast and stimulating world which is new to you and which you will undoubtedly explore anew each year with every choice you make. This Guide, and all the information tools at your disposal, are intended to help you with any steps you need to take and with your student life. The departments and the teaching community are also there to welcome you and to answer any questions you may have. Please do not hesitate to use them.

I hope that the vibrant, inclusive and prestigious University you are entering today will be a place of personal achievement and success, as well as a community to which you will always be proud to belong.

Welcome!





## A word from the Student Vice-President

**Whether you arrive having passed through the Parcoursup platform, whether you are international exchange student, or that you have reoriented yourself within of this establishment, you integrate today your first year of studies at the University of Paris-Saclay.**

For many, it is therefore the end of high school and entry into the world of higher education, this transition being accompanied by many changes. We're still feeling the fallout confinement and various health restrictions who have been able to turn our life paths upside down. HAS all the people who have been able to experience situations of isolation, I would like the University of Paris-Saclay can be for you a place of meetings and discoveries. We are fortunate to host a wide variety of associations and events, led by passionate people and willing to transmit. Do not hesitate to go to their meeting !

The University must also be for you a place of well-being and inclusion. Many services working for the University will be present to support you throughout your course. You will have the opportunity to discover some of them during your back-to-school events, or in this booklet: do not hesitate to call on them.

Likewise, you will have the opportunity to meet your elected students who will be in charge to represent you during this year. You can contact them if you have any questions relating to your training, or to the operation of this University in general.

I hope you can find in this University the image of this institution of excellence, but also a place of reception, who were able to push to choose to begin your entry into Higher Education. In the meantime, I welcome everyone, and a very nice return to the University of Paris-Saclay.

**Elise Dubois,  
Student Vice-President**





# AN INTRODUCTION TO UNIVERSITÉ PARIS-SACLAY



# About Université Paris-Saclay

Université Paris-Saclay offers a complete and varied range of **undergraduate, Master's and PhD courses**, the quality of which is internationally recognised thanks to the reputation of its research and the commitment of its academic staff.

## Its 9 member universities

(5 training and research units (also called 'faculties') in Science, Medicine, Pharmacy, Law-Economics-Management, Sport Science; 3 technological university institutes in the scientific and technical fields in Cachan and Orsay, and in the tertiary sector in Sceaux; and a university engineering school), **its Grandes Écoles** (CentraleSupélec, AgroParisTech, the École

normale supérieure Paris-Saclay and the Institut d'optique graduate school) and **its associate institutions** (Université de Versailles Saint- Quentin-en-Yvelines and Université d'Évry) offer state-of-the-art education in **science and engineering, life sciences and health, humanities and social sciences**.

**With 230 laboratories shared** with CEA, CNRS, IHES, inrae, and inria, inserm, and Onéra, Université Paris-Saclay represents **13% of the research capacity in France**.

## The strengths of Université Paris-Saclay

**Innovative undergraduate programmes to ensure success**

An undergraduate school

Selective undergraduate programmes

**A common Master's degree**

**67** Master's programmes

**540** 1st and 2nd year Masters: M1 & M2

**A unique PhD degree**

**1,300** PhDs per year

**4,600** PhD students

**21** Doctoral schools

**A common signature for scientific publications**

**13,000** publications per year



**An ecosystem with a strong international outreach**

**+8,500** new R&D jobs in 10 years



Denon, Thales, EDF, Safran, ... large companies and SMEs

**A common induction programme for international students**

**20%** of students

A single application portal



**A world-class campus**

**10,700** mixed housing units



Sports and cultural facilities

# Key figures

## Training and research

**48,000** students

**23,200** undergraduates

**21,000** Master's students

**4,600** PhD students

**18** Graduate schools and institutes

**7 400** Researchers and academic staff

**13 000** Publications per year

**8 200** Administrative staff and technicians



of research conducted in France



Laboratories



Experimental platforms

**Top** university in France

**Top 20** best universities in the world

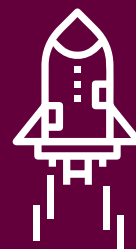
**1** FABLAB network

**1** Design centre

**7** Incubators

**1** Technology transfer acceleration company

**152** student entrepreneurs per year



# Governance

**Two committees, in addition to the President, are responsible for the governance of Université Paris-Saclay and enable all stakeholders to be represented.**

## PARIS-SACLAY AND ITS COMMITTEES

The governance of the University is carried out by its President and various committees.

## THE PRESIDENCY OF THE UNIVERSITY

Today, this role is carried out by a President who is elected by members of the Governing Board. Presidents serve for four years and may do just one additional term in office.

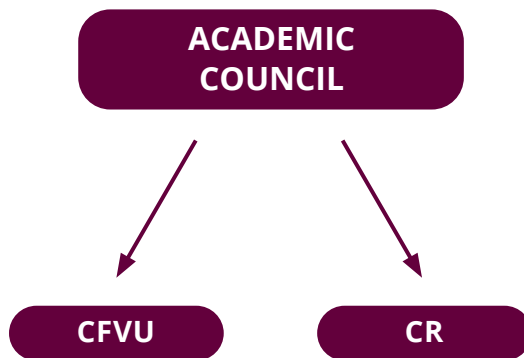
The President of the University is supported by several Vice-Presidents, including a Student Vice-President. The current President was elected on 2 March 2020.

### **The Governing Board (CA)**

The Governing Board decides the general policy of the institution and approves the University's budget. It comprises 37 members. The Governing Board has 4 external seats.

### **The Academic Council (CAC)**

In plenary sessions, the Academic Council is mainly responsible for key issues concerning research and training policy or the dissemination of scientific expertise. In restricted sessions, it is responsible for issues involving human resources concerning academic staff.



The Academic Council comprises the two following committees:

### **Committee for Education and University Life**

Made up of 40 members (including 14 external seats), it is consulted on policies relating to courses (examination methods, university timetables, course content) and the living and studying conditions of students (student assistance, cultural and sports policy).

### **The Committee for Research (CR)**

Made up of 40 members (including 4 PhD student seats), it is consulted on research policy guidelines and the distribution of research credits.

**CONTACTS** 01 69 15 61 02 / 74 14

The Department of Legal and Institutional Affairs, [direction.daji@universite-paris-saclay.fr](mailto:direction.daji@universite-paris-saclay.fr)  
Find out more at [universite-paris-saclay.fr/luniversite/gouvernance](https://universite-paris-saclay.fr/luniversite/gouvernance)

# Student elected representatives

Student representatives are elected by their peers on the strength of a manifesto and participate in the life of the University's central bodies under the leadership of the Student Vice-President (VPE).

## Your elected student representatives

As full members of the committees (like the representatives of the teaching and administrative staff), elected student representatives are the key intermediaries between you and the University's management team.

They decide on issues such as the methods of degree validation, the conditions for awarding travel scholarships or support for student projects, on issues concerning the budget and social issues, and sports and socio-cultural activities, etc.

## Putting yourself forward

You can contribute to the University by participating in the bodies responsible for managing it. Elected student representatives benefit from a special status which allows them to pursue their studies while carrying out their elected role.

## Student elections

You will be asked to vote to select your representatives for the University's main committees and for your department's or institution's committees.

University elections are a great opportunity to learn about democracy. By electing your representatives in the different governing bodies of the University, **you are choosing those who will be your key intermediaries with the institution.**

**The term of office for elected student representatives is 2 years.**

All information will be sent to your email address **prenom.nom@universite-paris-saclay.fr** and on our intranet.



## CONTACTS

To contact your elected representatives: [elus.etudiant@universite-paris-saclay.fr](mailto:elus.etudiant@universite-paris-saclay.fr)

To contact the Student Vice-President: [vp.etudiant@universite-paris-saclay.fr](mailto:vp.etudiant@universite-paris-saclay.fr)

# Graduate network

## **A springboard to career guidance and professional integration**

Université Paris-Saclay's graduate network, or 'alumni network', is one of our best professional networks. Its goal is to create a space where discussions and meetings can take place between the University, the students, graduates and their businesses. Just as the name implies, you can join once you graduate. However, it is available for you to use now.

## **This network can help you find your direction and professional integration.**

### **It enables you to:**

- Choose your course with confidence after listening to feedback from graduates
- Be inspired by the wide range of professions, professional sectors and careers of graduates who have completed the same course as you
- Succeed in your professional integration thanks to the advice given by graduates
- Be recruited thanks to the job offers posted by students on the Career Center
- Meet graduate entrepreneurs if you are interested in entrepreneurship
- Get coaching/ be mentored thanks to the Club RH.

## **A career area at your disposal**

- The Career Center is for the exclusive use of students and graduates. You can access it using your ENT login by going to the Université Paris-Saclay website.

## **Did you know?**

When you register for your first year, you are pre-registered for the University's Graduate Network.

## **Follow us on social media!**

**Twitter : @ParisSaclayPro LinkedIn: Alumni Université Paris- Saclay.**

## **CONTACTS**

**alumni.upsaclay@universite-paris-saclay.fr**

**01 69 15 33 29 - 06 24 54 09 76**

## **Additional information:**

**[www.universite-paris-saclay.fr](http://www.universite-paris-saclay.fr),  
rubrique L'Université > Alumni**











# BECOMING A STUDENT AT UNIVERSITÉ PARIS-SACLAY



# Enrollment

## ParcourSup

Are you hoping to join Université Paris-Saclay for your first year of study after the baccalauréat? Or would you like to make a change in direction after your first year? Find out what we can offer on [Parcoursup.fr](http://Parcoursup.fr). We offer nearly 50 selective and non-selective **courses accredited by Université Paris-Saclay or the Paris-Saclay Undergraduate School**, which are available across the 5 campuses situated in the south of the Île-de-France region. You can find out what can be expected of each course, its characteristics and the opportunities it offers. After creating your file on the platform, you will be able to apply for your chosen courses between January and March and will receive replies to your applications from May onwards. As soon as you have accepted the offer of admission you want, you will receive a message with all the information you need to proceed with your administrative and academic registration.

## CONTACT

Department for Training and Success, Guidance and Development of Research Projects Hub [accueil.oip@universite-paris-saclay.fr](mailto:accueil.oip@universite-paris-saclay.fr) or on 01 69 15 54 47

**Additional information:** [www.universite-paris-saclay.fr](http://www.universite-paris-saclay.fr), **Education section > Undergraduate courses**

## Open Days (JPO)

Every year, the member universities (faculties, IUT's and university engineering schools), the Grandes Écoles and associate institutions of Université Paris-Saclay open their doors to you and your parents so that you can come and find out about the very wide range of courses on offer.

Lecturers, students and career guidance professionals will be there to answer your questions and to advise you about your future choices.

During these open days, you can also find out about the wealth of student and community life which flourishes on the University's campuses. Numerous workshops and courses in artistic and cultural activities are on offer, as well as the various sports activities which take place in the different sports venues.

Finally, these days are also a chance to learn about the many options available for work placements or periods abroad.

## Additional information:

[www.universite-paris-saclay.fr](http://www.universite-paris-saclay.fr)

Admission section > Upper secondary students: University entrance > Open days

## Applying for an undergraduate degree

If you are applying for the first time to the University using Parcoursup, **registration for the administrative** process can take place online as soon as the results of the baccalauréat are announced.

Before your registration, you must pay the mandatory Student and **Campus Life Contribution (CVEC)** to CROUS by going to the website [www.messervices.etudiant.gouv.fr](http://www.messervices.etudiant.gouv.fr).

This contribution, which is €92, provides social, health, cultural and sports support for students. Once you have paid the CVEC, you will be given a certificate. This certificate will be requested when you register.

# Enrollment

**The administrative registration must be updated every year.** It leads to the statutory collection of tuition fees. Each student also pays his or her library fees at the time of administrative registration.

Students granted scholarships on social grounds are exempt from paying tuition fees on presentation of the official notice of the award for the current year.

Except in special cases, the student social security scheme is no longer available. Students enrolling for the first time in a higher education institution do not need to change their statutory health insurance policy. It is possible to supplement your health insurance cover with additional health insurance. Membership of a mutual insurance company for students (LMDE or HEYME) is an option available.

After completing the administrative registration process, you can move on to **the academic registration** process with the administrative office of your course of study or with the Registrar's Office (depending on the academic unit) for an assignment to a group of tutorials (TD) and to practical work (TP).

In most of the courses, the lectures, tutorials and practical work are for each semester. Academic registration sometimes has to be renewed for the 2nd semester.

The Registrar's Office will be your main point of contact throughout the year for finding out about timetables, the dates when courses start and changes in teaching hours or location.

## **Additional information:**

[www.universite-paris-saclay.fr](http://www.universite-paris-saclay.fr),

Admission section > Upper secondary students: University entrance > Undergraduate admission

## **CONTACT**

[information.bachelier@universite-paris-saclay.fr](mailto:information.bachelier@universite-paris-saclay.fr)

## **Applying for a Master's degree**

Master's degrees from Université Paris-Saclay are courses with limited capacity, so are therefore selective.

All applications for a Master's are based on application documents and involve the following steps:

- Submission of your application to the University's application platform.
- Examination of your file by the Master's degree programme panel.
- Feedback on your application sent to you via email. If you are accepted, you will also receive all the information you need to be able to proceed with your registration. Each Master's course has one or more application rounds. Further details about these application rounds are available in the 'Application procedures' section for each course. It is not possible to submit an application outside of these periods.

## **Additional information:**

[www.universite-paris-saclay.fr](http://www.universite-paris-saclay.fr),

Admission section > Applying for our Master's

## **Applying for a PhD**

You must apply to the doctoral school via Université Paris-Saclay's application portal. For the application to be considered as submitted, the file must be complete and finalised.

Find out all the information about applying for a PhD at

[www.universite-paris-saclay.fr](http://www.universite-paris-saclay.fr),

Admission section > PhD

# Enrollment

## Admission procedure for international students

### Applying for an undergraduate degree

Are you a student coming from abroad who would like to apply for an undergraduate degree at Université Paris-Saclay? Want to know how to apply to a French university for the first time? The procedures vary depending on your nationality, your country of residence and the nature of your intended studies.

Applying for an undergraduate degree:

- Students coming from Europe can follow the procedure on Parcoursup.
- Students who do not hold or will not hold a French or European baccalauréat and who live in one of the 46 countries covered by the Study in France (Études en France) programme must go through an online procedure by contacting the Campus France site.
- Students residing in a country not covered by the Study in France programme must complete a Preliminary Admission Application (Demande d'Admission Préalable) (DAP).

To apply for the second and third year, students must submit an application on the eCandidat platform.

### Additional information:

[www.universite-paris-saclay.fr](http://www.universite-paris-saclay.fr)

Admission section > Upper secondary students: University entrance > International students: applying for an undergraduate degree

### CONTACT

[relations.internationales@universite-paris-saclay.fr](mailto:relations.internationales@universite-paris-saclay.fr)

## Students on an exchange programme in one of Université Paris-Saclay's member universities

With several hundred partner universities on all continents, each year Université Paris-Saclay welcomes students on the exchange programme, particularly within the framework of the Erasmus+ programme, and in doing so confirms its commitment to an international outlook. International students wishing to join one of Université Paris-Saclay's institutions as part of an exchange programme must first pre-register with their home university. An application form is then sent to each student. The application is considered by the international exchange officers in each member university. The study period abroad becomes official once the study programme is validated and signed by the student, the home institution and the host institution.

In order to start the academic year in the best possible way, a week-long French as a Foreign Language course is offered to enable students to develop their French language skills.

### Additional information:

[www.universite-paris-saclay.fr](http://www.universite-paris-saclay.fr)

Admission section > International students

# Student and Campus Life Contribution



Before your registration with the University, you must pay the mandatory **Student and Campus Life Contribution (CVEC)** to CROUS by going to the website [www.messervices.etudiant.gouv.fr](http://www.messervices.etudiant.gouv.fr)

This contribution provides social, health, cultural and sports support for students. For example, it allows you:

- to access healthcare on campus
- to take part in cultural workshops which are available throughout the year.
- to benefit from social assistance or financial support, depending on your situation
- to make use of the broad and varied sports opportunities available
- to support projects initiated by the University's student associations.<sup>1</sup>

The total amount of the CVEC is €95

After you have paid the CVEC, you will receive a certificate via email with the certificate number you need for registration.

Students also have the option of paying for their CVEC in cash using efficash. They will then receive a certificate within 48 hours.

Students granted scholarships on social grounds, refugees, persons benefiting from subsidiary protection and asylum seekers will be exempt from paying the CVEC but must log in to obtain a CVEC certificate number.

information and FAQs:  
<https://cvec.etudiant.gouv.fr/>

## CONTACT

Student Life and Equal Opportunities Department,  
[cvec.etudiant@universite-paris-saclay.fr](mailto:cvec.etudiant@universite-paris-saclay.fr)

## Student card

**Your multi-service card is a student ID card as well as an IZLY electronic wallet.**

It has to be shown every time you take an exam. Your student card also allows you to borrow books from the University's library network.

**The card is valid for the duration of your studies at Université Paris-Saclay.**

Once you have your card, go to [www.izly.fr](http://www.izly.fr) to activate your IZLY account.

You can then top-up your card:

- via transfers to your account at [www.izly.fr](http://www.izly.fr)
- using cash at the CROUS university restaurants.

IZLY is available in your CROUS food and drink outlets. It also allows you to pay for other CROUS services and facilities (photocopying, vending machines, etc.).











# STUDYING AT UNIVERSITÉ PARIS-SACLAY



# General introduction to the courses

## A comprehensive range of courses

Université Paris-Saclay, together with its member universities, Grandes Écoles and associate institutions, offers a comprehensive and varied range of undergraduate, Master's and PhD courses. The quality of what it has to offer is recognised internationally due to the reputation of its research, its multidisciplinary approach and its innovative teaching methods. As a result, you can follow cutting-edge courses in the following fields:

- **Business**
- **Management**
- **Humanities**
- **Law, Economics and Management**
- **Human and Social Sciences**
- **Science**
- **Science and Technology of Physical Activity and Sport (STAPS)**
- **Health**
- **Engineering, Information Technology**

See all the courses on offer  
at [www.universite-paris-saclay.fr](http://www.universite-paris-saclay.fr)



## Innovative undergraduate courses:

**21 000** students

**12** Undergraduate Joint Degrees

**17** Undergraduate Degrees

**42** Vocational Undergraduate Degrees

**7** B.U.T (University Undergraduate Degree in Technology)

**1** DEUST (Scientific and Technical University Diploma)

**33** University Diplomas

Preparation for health studies



## From the Master's level onwards, the courses on offer are organised around 17 GRADUATE SCHOOLS and 1 INSTITUTE

A Graduate School incorporates a coordinated collection of Master's tracks, training programmes, doctoral schools and research activities. Higher Education and Research Professions Education, Training, Teaching

				Higher Education and Research Professions	Education, Training, Teaching
Chemistry	Information Technology			Institute for the Sciences of Light	Biosphere (Biology, Society, Ecology & Environment, Resources, Agriculture and Food)
Geosciences, Climate, Environmental and Planetary Sciences	Mathematics	Law	Economics and management	Life sciences and Health	Health and Drug Sciences
Physics	Engineering and Systems Sciences	Humanities and Heritage Science	Sociology and Political Science	Sport, Movement and Human Factors	Public Health

### Master's Degrees supported by high-level research work:

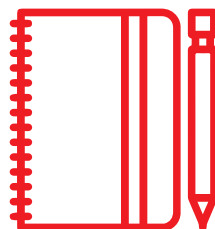
- Over 12,000 students enrolled in M1 and M2
- Over 5,900 graduates
- 67 Master's Degrees
- 580 M1 and M2 Master's
- 118 bilingual Master's
- 70 Master's conducted solely in English
- 17 Graduate Schools and 1 Institute
- 150 international study grants

### The PhD, a flagship degree

- 4,600 PhD students
- 21 Doctoral Schools
- 45% international PhD students
- 7,400 researchers and lecturers dedicated to supervision
- 17 Graduate Schools and 1 Institute

# Undergraduate courses

Université Paris-Saclay offers you high-quality courses which provide you with access to employment as well as enhancing your knowledge in various scientific and economic sectors, in academic laboratories (both in the private and public sectors) and in a variety of fields (engineering, teaching, the legal profession, health professions and the service sector, etc.).



## FOCUS

### ON THE ECOLE UNIVERSITAIRE DE PREMIER CYCLE PARIS-SACLAY

In conjunction with the degrees supported by **Université Paris-Saclay**, the **Paris-Saclay Undergraduate School** coordinates all national Undergraduate Degrees, Vocational Degrees, B.U.T.s (University Undergraduate Degree in Technology) and DEUSTs (Scientific and Technical University Diploma).

You will benefit from quality training, enhanced by the educational and scientific expertise of the lecturers and researchers, as well as by numerous partnerships with the socio-economic world.

Find out about all undergraduate courses on the University's website:  
[www.universite-paris-saclay.fr/formation/premier-cycle](http://www.universite-paris-saclay.fr/formation/premier-cycle)

## Joint Degrees

The 12 Undergraduate Joint Degrees offered by Université Paris-Saclay open the doors to the best courses to a Master's level in France or the world and enable access to the Grandes Écoles following a competitive university examination.

A Joint Degree offers the opportunity to specialise in two main disciplines and to attain joint expertise during the course of study.

- **Chemistry, Life Sciences**
- **Law, Economics**
- **Law, Information Technology**
- **Law, Science and Innovation**
- **Economics, Mathematics**
- **Geosciences, Physics, Chemistry**
- **Information Technology, Mathematics**
- **Information Technology, Life Sciences**
- **Mathematics, Engineering Physics and Science**
- **Mathematics, Life Sciences**
- **Physics, Chemistry**
- **STAPS, Engineering Science**

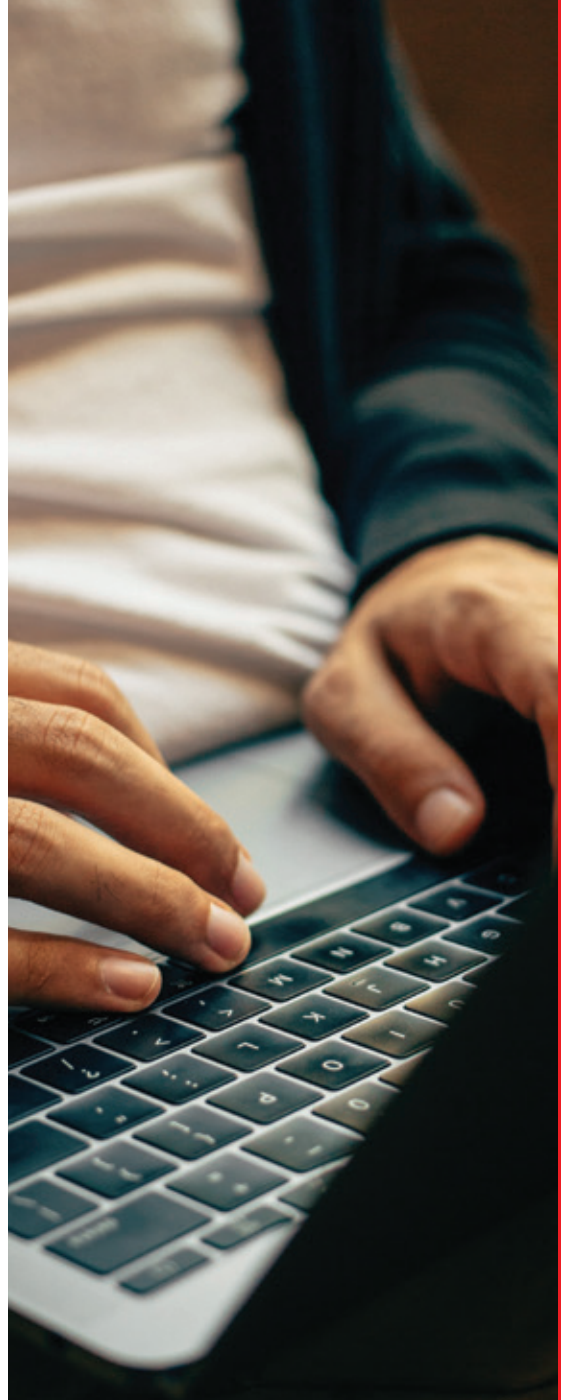


# Degrees

Over 3 years, the degrees (180 ECTS) offer you progressive specialisation in a discipline and provide you with all the necessary skills to go on and pursue a Master's degree. The Paris-Saclay Undergraduate School has put in place numerous pathways to other degrees (DUT, joint degrees, etc.) as well as numerous openings into research and the international scene through work placements and tutored projects.

Amongst the 17 existing degrees, some offer several pathways. The teaching can take place, depending on the course, on the Orsay, Sceaux, Évry and Guyancourt campuses

- **Economic and social administration**
- **Chemistry**
- **Law**
- **Economics and Management**
- **Information Technology**
- **Applied Foreign Languages**
- **Mathematics**
- **Physics**
- **Earth Science**
- **Life Sciences**
- **Science and Technology**
- **Science, Education, Mediation**
- **Sociology**
- **STAPS: Adapted Physical Activity and Health**
- **STAPS: Education and Motor Development**
- **STAPS: Sport Coaching**
- **STAPS: Sports Management**



# Vocational Undergraduate Degrees

Developed alongside businesses and employers in the target sector, the Vocational Undergraduate Degree is the course of choice for successful professional integration after 3 years of higher education. Vocational Undergraduate Degrees can be accessed after two years of an Undergraduate degree, DUT or BTS and are highly vocational.

**37 Vocational Undergraduate Degrees are available and cover a very broad range of sectors.** Depending on the course being studied, teaching takes place at Orsay, Cachan, Sceaux, Évry, Versailles-Saint-Quentin-en-Yvelines

- **Landscaping: design, management, maintenance**
- **Insurance Bank Finance: account management**
- **Bio-industry and bio-technology**
- **Analytical chemistry, control, quality, environment**
- **Synthetic chemistry**
- **Business and distribution**
- **Process engineering and industrial bioprocesses**
- **Pharmaceutical, cosmetic and health industries: management, production and development**
- **Maintenance and technology: Industrial control**
- **Maintenance and technology: electronics, instrumentation**
- **Management and Management of Organisations**
- **Electrical and energy professions**
- **Electronics professions: communication, embedded systems**
- **Industrial professions: Industrial product design**
- **Industrial professions: industrial production management**
- **Industrial professions: mechatronics,**

## **robotics**

- **Industrial professions: Aeronautical industry**
- **Information technology professions: system and network administration and security**
- **Information technology professions: design, development, testing of software**
- **Instrumentation, measurement and quality control professions**
- **Communication professions: communication management**
- **Fitness professions**
- **Human Resources Management: assistant**
- **Management and accounting professions: Management control**
- **Management and accounting professions: Client portfolio manager in a consultancy firm**
- **Environmental protection and management professions**
- **Professions in government and local authorities**
- **Computer network and telecommunications professions**
- **Professions in construction: civil engineering and construction**
- **International trade professions**
- **Professional optics**
- **Protection and development of historical and cultural heritage**
- **Quality, hygiene, safety, health, environment**
- **Automated systems, networks and industrial computing**
- **Technical sales**
- **Sound and Image Technology (TSI)**





by kari shea de unsplash.com

## B.U.T and DEUST

The **B.U.T. (University Undergraduate Degree in Technology)** are vocational courses which are completed in three years. They can be accessed as apprenticeships directly after the baccalauréat. These courses provide you with a solid technical background for professional integration at the baccalauréat +3 level or for further study.

7 specialist B.U.T. are available (at Orsay, Cachan and Sceaux depending on the course)

### the B.U.T

- **B.U.T. Industrial Electrical and Computer Engineering (GII)**
- **B.U.T. Mechanical and Production Engineering (GMP)**
- **B.U.T. Chemistry**
- **B.U.T. Information Technology**
- **B.U.T. Physical Measurements**
- **B.U.T. Business and Administration Management (GEA)**
- **B.U.T. Marketing Techniques (TC)**

### the DEUST

The **DEUST (Scientific and Technical University Diploma)** is a vocational course which takes two years to complete.

1 DEUST is offered in Evry.

# The year-long specialist course in health

The year-long specialist course in **health** **If you are wanting to access health courses in Medicine, Midwifery, Odontology, Pharmacy (MMOP), the Paris-Saclay Undergraduate School can provide training and offers you two access pathways:**

- The Gateway Specialist Health course (PASS)
- Minor Illness Degree (LAS)

Entry to physiotherapy training is possible within the framework of agreements between the University and the physiotherapy schools after a first year of preparation for health studies or within the framework of L1 courses in Science or STAPS degrees.

## REFORM OF ENTRY TO HEALTH STUDIES

Since 2020, the reform of entry to health studies has resulted in:

- > The replacement of the numerous *clausus* with an intake capacity in the 2nd cycle of health studies courses
- > The development of an access pathway based on the validation of Undergraduate degree credits (ultimately for more than 30% of places)
- > The requirement, in the case of a second attempt, to go through an Undergraduate Degree
- > The commitment to recruit students from diverse backgrounds Entry is still very selective (less than half of applicants are given a place), but oral exams, the motivation of students and essay topics are given greater weight.

**Further information:** [ecole-universitaire-paris-saclay.fr/sante/](https://ecole-universitaire-paris-saclay.fr/sante/)



## Refresher courses

### \* PCSO (PREPARATION FOR SCIENTIFIC COURSES AT ORSAY)

Paris-Saclay Undergraduate School offers a **PCSO preparatory year**.

Entering scientific or technical higher education when you do not have a scientific background is made possible by completing a year-long 'Preparation for Scientific Courses' study period. Results obtained throughout the year count towards the award of a University Diploma.

### \* DAEU (DIPLOMA OF ENTRY TO UNIVERSITY STUDIES)

If you do not have the baccalauréat, there are diplomas available which provide access to higher education: **the DAEU A arts** option (offered at the Jean-Monnet Faculty in Sceaux) and the **B scientific option** (offered by the Orsay Faculty of Science).

The DAEU gives its holder the same rights as someone with a baccalauréat, including entry to university. This course offers people who have not obtained a baccalauréat, or who are looking for work, the chance to give fresh impetus to their efforts to integrate into the job market. There are certain age and experience requirements for entry to this course.

**Further information:** [ecole-universitaire-paris-saclay.fr/remise-a-niveau/](https://ecole-universitaire-paris-saclay.fr/remise-a-niveau/)

## Grande École courses

### ÉCOLE NORMALE SUPÉRIEURE PARIS-SACLAY

The École normale supérieure Paris-Saclay, a Grande École for research and higher education, aims to guide its students towards completing a PhD. Students are carefully selected and follow intensive courses in the basic sciences, humanities and social sciences or engineering sciences.

The École also offers several unique research training courses on topics such as quantum technologies, artificial intelligence and research-creation.

ENS Paris-Saclay, which has been located on the Saclay plateau since 2020, coordinates the Graduate School for Research and Higher Education Professions from within Université Paris-Saclay, which is the top university in France.

# Engineering and Grandes Écoles courses

**Université Paris-Saclay offers a very wide range of courses in engineering together with its member universities, Grandes Écoles and research organisations.**

## **POLYTECH PARIS-SACLAY**

Polytech Paris-Saclay is the university polytechnic school at Université Paris-Saclay. It is part of the Polytech network, which is one of the largest networks in France for the training of engineers.

An integrated preparatory course: following a general baccalauréat, Polytech Paris-Saclay offers two initial years of generalist training which take place within the Parcours des Écoles d'Ingénieurs Polytech (PeiP). This preparatory programme enables students to continue on to the engineering programme in the 15 schools in the Polytech network, with around one hundred specialisms to choose from. Four specialisms are available at Polytech Paris-Saclay:

- Electronics and Robotic Systems
- Information Technology
- Materials: Mechanics and Energy
- Photonics and Optronic Systems

It is possible to enter the 1st or 2nd year of the engineering cycle after the CPGE (MP,PC,PSI), ATS, L2, L3, DUT, BUT, M1 or M2.

The course is available as an apprenticeship.

**Further information is available at:**

[www.polytech.universite-paris-saclay.fr/](http://www.polytech.universite-paris-saclay.fr/)

## **CENTRALESUPÉLEC**

CentraleSupélec is a partner institution of Université Paris-Saclay. It is one of the two largest general engineering schools in France and in the world.

The entrance exam covers the curriculum of the Preparatory Courses for Admission to the Scientific Grandes Écoles (CPGE). The minimum level required equates to two years of preparatory study after the baccalauréat. Separate exams are offered depending on candidates' backgrounds (MP, PC, PSI, PT, TSI, BCPST).

It is also open to students with a L3 / Undergraduate Degree in Mathematics-Biology.

In the third year, students choose a specialism from the eight key fields of study offered (the majors), each of these domains is subdivided into specialities (the specialisms):

- Construction, city and transport
- Large interacting systems
- Information Technology and digital technology
- Mathematics and data science
- Physics and nanotechnology
- Communicating systems & connected objects
- Life sciences, health and environment

**Further information is available at:**

[www.centralesupelec.fr/](http://www.centralesupelec.fr/)

## **AGROPARISTECH**

The Institute of Life Sciences, Industries and the Environment, otherwise known as AgroParisTech, is a partner institution of Université Paris-Saclay.

The engineering training provided includes three main disciplines (life sciences, engineering sciences and economic, social and management sciences) which are combined in order to find solutions to today's major challenges. This expertise is gradually deepened through one of the institution's four key fields:

- sustainable production, networks, areas for sustainable development
- food engineering, biomolecules and energy
- environmental management and engineering
- engineering and health: people, bioproducts, environment.

Even though, generally speaking, entry to the first year is by competitive examination, AgroParisTech aims at a diversity of student backgrounds. A main stream of access allows entry to the first year and a complementary stream of access on the basis of qualifications is available for international students or as part of a joint degree course.

**Further information is available at:**

[www2.agroparistech.fr/Admission-2112.html](http://www2.agroparistech.fr/Admission-2112.html)



## INSTITUT D'OPTIQUE GRADUATE SCHOOL

institution of Université Paris-Saclay. It is also a member of ParisTech.

Entry to the school requires sitting the same competitive examination as for the CentraleSupélec for the courses PC, PSI, MP and TSI or the common Banque PT entrance examination. The Institut d'Optique Graduate School recruits engineering students based on the CentraleSupélec and Banque PT competitive examination and the international ParisTech examination (an international competitive examination mainly for students from Asia, South America and Russia). The remaining places are reserved for students admitted on the basis of qualifications.

For more than 100 years, the SupOptique community has been at the forefront of photonics in France and abroad. The school provides outstanding training in Systems Engineering. It combines a variety of skills (digital and Information Technology, electronics, applied mathematics) based around a core focus on optics and photonics. The programme has 4 courses of study:

- a traditional SupOptique student course
- student employee on an apprenticeship
- student engineer-entrepreneur
- student on a joint degree course in photonics and biomedicine

Enrolment for each course of study takes place during the first year and is generally for the entire duration of the course

**Further information is available at:**

[www.institutoptique.fr/admissions-0](http://www.institutoptique.fr/admissions-0)



## NATIONAL INSTITUTE FOR NUCLEAR SCIENCE AND TECHNOLOGY (INSTN) - CEA

INSTN is the specialist school for low carbon energy and health technology. INSTN is managed by CEA and benefits from its proximity to all the latter's research laboratories and facilities. With close links to key players in the energy sector in France and abroad, the school offers specialist courses in engineering (and in atomic engineering in particular) as well as courses which form part of Master's courses at Université Paris-Saclay. These include: materials for energy and transport, nuclear engineering, biomedical imaging, biomolecular engineering and chemistry, and energy economics. In the field of health, INSTN also trains nuclear physicians, nuclear physicists and radiopharmacists through its specialist study diplomas.

INSTN operates under the supervision of the ministers responsible for industry and higher education. INSTN has been a member of the CGE (Conférence des Grandes Écoles) since 2018 and the AIEA Collaborating Centre since 2016.

The 2 engineering diplomas are:

- The Nuclear Engineering diploma
- The specialist engineering degree in Atomic Engineering.

**Further information is available at:**

<http://www-instn.cea.fr/formations/diplomes-et-titres/liste-desdiplomes>

# Master's Courses

## CONTINUING STUDY AFTER A BAC+3

Université Paris-Saclay offers a range of courses at a Master's level which are supported by high-level, international research. Our courses benefit from our combined resources and the appeal of our partners. They are aimed at a diverse student population seeking to access the highest level of knowledge.

Our Master's ensure that you have the best access to the jobs of the future.

Université Paris- Saclay offers 67 shared Master's tracks. In total, more than 580 Master's degrees (M1 and M2) are available, of which 118 are taught bilingually and 58 entirely in English.

SUBJECTS	GRADUATE SCHOOLS	CONTACTS
<a href="#"><u>Economic and Social Administration</u></a>	Economics & Management	Arezki CHERFAOUI Liliana MITKOVA
<a href="#"><u>Agrosciences, Environment, Regions, Landscape, Forest</u></a>	Biosphera (Biology, Society, Ecology & Environment, Resources, Agriculture and Food)	Erwan PERSONNE
<a href="#"><u>Archives and Records Management</u></a>	Humanities – Heritage Sciences	Pauline LEMAIGRE-GAFFIER Marie CORNU
<a href="#"><u>Bioinformatics</u></a>	Information Technology and Life Science and Health	Sarah COHEN BOULAKIA
<a href="#"><u>Biodiversity, Ecology and Evolution</u></a>	Biosphera (Biology, Society, Ecology & Environment, Resources, Agriculture and Food)	Stéphane BAZOT Thierry SPATARO
<a href="#"><u>Integrative Biology and Physiology</u></a>	Biosphera (Biology, Society, Ecology & Environment, Resources, Agriculture and Food)	Jean-Denis FAURE
<a href="#"><u>Biologie-Santé / Life Sciences and Health</u></a>	Life Sciences and Health	Laurent THEODORE
<a href="#"><u>High Performance Computing, Simulation</u></a>	Systems Science and Engineering	William JALBY
<a href="#"><u>Chemistry</u></a>	Chemistry	Rachel MEALLET-RENAULT
<a href="#"><u>Organisational Communication</u></a>	Sociology and Political Science	Stela RAYTCHEVA Stephane OLIVESI
<a href="#"><u>Accounting - Control - Audit</u></a>	Economics & Management	Amin CHIKAOUI Imen JEDIDI
<a href="#"><u>Management Control and Organisational Audit</u></a>	Economics & Management	Philippe JACQUINOT Karim SAID
<a href="#"><u>Culture, Heritage and Mediation</u></a>	Humanities and Heritage Science	Véronique PAULY

SUBJECTS	GRADUATE SCHOOLS	CONTACTS
<u>Design</u>	Humanities - Heritage Science	James AUGER
<u>Law</u>	Law	Florence DEMOULIN AUZARY Boris BERNABÉ
<u>Intellectual Property and Digital Law</u>	Law	Alexandra BENSAMOUN
<u>Health Law</u>	Law	Caroline LACROIX
<u>Corporate Law</u>	Law	Véronique MAGNIER
<u>International and European Law</u>	Law	Frédérique COULÉE Patrick JACOB
<u>Notarial Law</u>	Law	Pierre CALLÉ
<u>Private Law</u>	Law	Francoise LABARTHE
<u>Public Law</u>	Law	Raphaël PAOUR Vincent BOUHIER
<u>Social Law</u>	Law	Sandrine MAILLARD Alexis TRICLIN
<u>Economics</u>	Economics & Management	Olivier BOS
<u>Environmental, Energy and Transport Economics</u>	Biosphera (Biology, Society, Ecology & Environment, Resources, Agriculture and Food)	Jean-Christophe BUREAU
<u>Political Economy and Institutions</u>	Economics & Management	Laurent DALMAS Natalia ZUGRAVU
<u>Electronics, Electrical Energy, Automation</u>	Engineering and System Sciences	Arnaud BOURNEL
<u>Energy</u>	Engineering and System Sciences	Sylvain FRANGER
<u>Ergonomics</u>	Engineering and System Sciences	Vincent BOCCARA
<u>Ethics</u>	Public health	Emmanuel HIRSCH Virginie PONELLE
<u>Development and Environmental Studies</u>	Sociology and Political Science	Jean-Paul VANDERLINDEN Jean-Paul MARECHAL
<u>Finance</u>	Economics & Management	Eleni ILIOPULOS

SUBJECTS	GRADUATE SCHOOLS	CONTACTS
<u>Civil Engineering</u>	Engineering and System Sciences	Farid BENBOUDJEMA
<u>Process and Bioprocess Engineering</u>	Engineering and System Sciences	Stéphanie PASSOT
<u>Production Management, Logistics, Purchasing</u>	Economics & Management	Hazem BEN AISSA
<u>Management of Human Resources</u>	Economics & Management	Delphine PHILIP DE SAINT JULIEN Aude DANDRIA
<u>Land Management and Local Development</u>	Biosphera (Biology, Society, Ecology & Environment, Resources, Agriculture and Food)	Jean-Marc DOUGUET
<u>History</u>	Humanities and Heritage Science	Delphine CARRANGEOT
<u>Information Technology</u>	Information Technology	Fatima SAIS
<u>Complex System Engineering</u>	Systems Science and Engineering	Oualid JOUINI
<u>Nuclear Engineering</u>	Systems Science and Engineering	Gaël SATTONNAY
<u>Innovation, Business and Society</u>	Economics & Management	Anne PLUNKET
<u>Foreign and Regional Languages, Literature and Civilisations</u>	Humanities and Her-itage Science	Anthony SABER
<u>Humanities, Language in the Humanities and Languages</u>	Humanities and Her-itage Science	Brigitte GAUTHIER Sylvie BOUFFARTIGUE
<u>Strategic Management</u>	Economics & Management	Jean-Philippe DENIS
<u>Marketing, Sales</u>	Economics & Management	Florence DURIEUX
<u>Mathematics and Applications</u>	Mathematics	Christophe GIRAUD
<u>Mechanics</u>	Systems Science and Engineering	Pierre-Alain BOUCARD
<u>Teaching, Education and Training Professions (MEEF), Practices and Mechanics of Learning</u>	Education, Teaching, Training	Gilles UHLRICH
<u>Computer Methods Applied to Business Management - MIAGE</u>	Information Technology	Frédérique BLONDEL
<u>Teaching, Education and Training Professions (MEEF), 1st level</u>	Education, Teaching, Training	Yann IMINE



SUBJECTS	GRADUATE SCHOOLS	CONTACTS
<u>Teaching, Education and Training Professions (MEEF), 2nd level</u>	Education, Teaching, Training	Pia HENAFF-PINEAU
<u>Musicology</u>	Humanities and Heritage Science	Pierre COUPRIE
<u>Nutrition and Food Science</u>	Biosphera (Biology, Society, Ecology & Environment, Resources, Agriculture and Food)	Claire GAUDICHON Pierre GIAMPAOLI
<u>Physics</u>	Physics	Sophie KAZAMIAS
<u>Public Health</u>	Public health	Josiane WARSZAWSKI
<u>Political Science</u>	Sociology and Political Science	Patrick HASSENTEUFEL Delphine PLACIDI-FROT
<u>Earth, Environment and Planetary Sciences</u>	Geosciences, Climate, Environment and Planets	Sylvain BOULEY Cyril SZOPA
<u>Vision Science</u>	Life Sciences and Health	Richard LEGRAS Nicolas BAYAN
<u>Medication and Health Product Sciences</u>	Health and Drug Sciences	Véronique LEBLAIS
<u>Materials Science and Engineering</u>	Systems Science and Engineering	Philippe LECOEUR Jérôme CREUZE
<u>Science and Technology of Physical Activity and Sport - STAPS</u>	Sport, Movement and Human Factors	Pierre BERNARDIN
<u>Sociology</u>	Sociology and Political Science	Emmanuel QUENSON
<u>STAPS: Training and Sports Performance Optimisation</u>	Sport, mouvements, facteurs humains	Eric YIOU
<u>STAPS: Sports Management</u>	Sport, Movement and Human Factors	Mathieu DJABALLAH
<u>STAPS: Adapted Physical Activity and Health</u>	Sport, Movement and Human Factors	Caroline TEULIER
<u>STAPS: Engineering and Ergonomics of Physical Activity</u>	Sport, Movement and Human Factors	Nicolas VIGNAIS

Find out about all the Master's courses at Université Paris-Saclay on the website:  
<https://www.universite-paris-saclay.fr/formation/master>

## Health courses

Université Paris-Saclay offers courses in the field of health within its Faculty of Pharmacy and **Faculty of Medicine**. The length of the course depends on the specialism. A state-accredited diploma is awarded upon completion. These courses can be accessed via two routes of admission:

- the **Specialist Health Course** (PASS)
- the **Entry to Health Studies Degree** (LAS)

The pharmaceutical studies course, which leads to a State Diploma of Doctor of Pharmacy, is organised over six years for the Pharmacy and Industry Research study course, and over nine years for the Hospital Pharmacy, Medical Biology, Research study course (PHBMR). The State Diploma (DE) for all three courses of study is awarded after the defence of a thesis.

The medical course of study is divided into three cycles. At the end of these three cycles of study and the defence of the thesis, students are holders of a Specialist Study Diploma (DES) in the subject studied, and a Doctor of Medicine Diploma.

Within the context of the academisation of paramedical training, courses in nursing, medical electro-radiology, physiotherapy and podiatry, as well as inter professional training are affiliated to the Paris-Saclay Faculty of Medicine.

### CONTACTS

#### Contacts : PASS / LAS

Orsay site: [florence.pheulpin@universite-paris-saclay.fr](mailto:florence.pheulpin@universite-paris-saclay.fr)

Site de Kremlin-Bicêtre : [promo-pass.bicetre@universite-paris-saclay.fr](mailto:promo-pass.bicetre@universite-paris-saclay.fr)

#### Contact for the Department of Studies and Student Life, Faculty of Medicine:

[service-etudes-vie-etudiante-medecine@universite-paris-saclay.fr](mailto:service-etudes-vie-etudiante-medecine@universite-paris-saclay.fr)

**Contact service de la scolarité Faculté de Pharmacie** : Contact for the Registrar's Office, Faculty of Pharmacy: [samuel.costantin@universite-paris-saclay.fr](mailto:samuel.costantin@universite-paris-saclay.fr)

#### Additional information:

[universite-paris-saclay.fr/formation/etudes-de-sante](http://universite-paris-saclay.fr/formation/etudes-de-sante)





## The 'Magistères'

A 'Magistère' is a state-accredited university degree. It takes three years to complete (from Bac+3 to Bac+5) and is a combination of teaching and work placements in companies or laboratories.

A 'Magistère' is based on the Undergraduate Degree courses (Undergraduate Joint Degree 'Magistère' from Université Paris-Saclay) and a Master's (M1, M2) from the University, with the addition of specialist courses.

It offers broad basic knowledge and training in research through research and progressive specialisation. This leads on into a wide range of jobs in research, academic research and teaching. It is made available following a selection process which takes into account the motivation of each candidate.

- 'Magistère' in biology
- 'Magistère' in Information Technology
- 'Magistère' in Mathematics
- 'Magistère' in Fundamental Physics
- 'Magistère' in Molecular Physical Chemistry

**Find additional information about 'Magistères' at Université Paris-Saclay on the website:**

**<https://www.universite-paris-saclay.fr/formation/magisteres>**

# University Diplomas

## FOR SPECIALISATION OR ORIENTATION AT UNIVERSITY

In addition to National Diplomas (B.U.T, Undergraduate Degrees, Vocational Undergraduate Degrees, Master's and PhDs), Université Paris-Saclay also offers University Diplomas (DU). These DU s can be offered at one or more institutions and are therefore called Inter-University Diplomas (IUD).

The DUs are, for the most part, in Initial Training (IT) or Continuing Education (FC) and are designed to provide specialisation in the fields of expertise available at Université Paris-Saclay.

Université Paris-Saclay offers over 170 DUs in a wide range of varied fields

- Languages
- Law, Economics
- Entrepreneurship
- Medicine
- Pharmacy
- Science
- Sport Science

Université Paris-Saclay offers over 170 DUs, including 4 on entrepreneurship.

**Find out all about our University Diplomas on the [le site internet de l'Université Paris-Saclay](#).**

## DU3R

University Diploma 'React, Bounce Back, Succeed'. This one-year course is designed for students who have completed their upper secondary education and who are wondering what direction to take post their baccalauréat, and for first-year students who want to change direction quickly. This one-year course is recognised with a University Diploma.



# Work-study courses

## COMBINE THEORETICAL EDUCATION WITH PRACTICAL SKILLS

Université Paris-Saclay teaches students on work-study courses in a wide range of fields and at all levels of study: DUT, Undergraduate Degree, Master's, etc.

Work-study courses enable you to learn a trade and to integrate more easily into a company. It is a training system which involves a practical period in a company followed by a period of study at the University. Work-study courses allow students to combine their university studies with experience in a company, whatever its size.

Université Paris-Saclay, in partnership with the Apprentice Training Centres (CFA), can now offer over **160 apprenticeship courses in a very wide range of sectors:** Sports and Leisure Activities, Administration, Aeronautics, Audiovisuals, Banking, Biology, Biotechnology, Chemistry, Business, Communication, Accounting, Law, Economics, Electricity, Electronics, Energy, Environment, Ergonomics, Finance, Management, Pharmaceutical Industries, Information Technology, Embedded Information Technology, Instrumentation, Humanities, Management, Marketing, Materials, Mechanics, Mechatronics, Metrology, Logistics, Production, Quality, Purchasing, Music, Optics, Optronics, Human Resources, Networks and Security, Health, Earth Sciences, Political Science, Sciences, Industrial Technologies, Robotics, Telecommunications.



Work-study courses comprise two types of agreement:

- **A professional training agreement:**

The aim of this scheme is to integrate young people and adults (aged 16 to 25) into or return them to employment by acquiring a professional qualification (diploma, title, certificate of professional qualification, etc.) recognised by the State and/or the professional sector. This agreement, which involves remuneration, can last from 6 to 12 (or even 36) months and can be concluded with a fixed-term or an open-ended employment contract.

- **An apprenticeship agreement:**

lasting from 6 months to 3 years depending on the Diploma being studied, this agreement can be concluded with a private or public employer on a fixed-term or open-ended employment basis. It entails working in collaboration with a company, an apprentice and a partner Apprenticeship Training Centre of Université Paris-Saclay.

**Find out all the information about apprenticeships at Université Paris-Saclay on [le site internet](#) or contact the Department for Training and Success by email: [apprentissage@universite-paris-saclay.fr](mailto:apprentissage@universite-paris-saclay.fr)**

# Continuing education, accreditation of prior learning

## LIFE-LONG LEARNING

### Continuing Education (FC)

Université Paris-Saclay offers training courses specifically designed and adapted for people interested in further education: employees, jobseekers, professionals, company managers, etc. who wish to resume their studies or who have interrupted their studies and wish to acquire or develop a qualification.

All of our University's initial training courses are available for continuing education. In addition to the National Diplomas, we offer short courses, seminars and training courses specifically designed to provide specialist knowledge and skills in a particular professional field.

Designed in collaboration with the company, these courses aim to provide you with specific knowledge and expertise in a particular professional field.

**Continuing Education at Université Paris-Saclay is DataDock certified and approved as a CPD organisation. Find out all the information about Continuing Education at Université Paris-Saclay on [the website](#) Or send an email to: [formation.continue@universite-paris-saclay.fr](mailto:formation.continue@universite-paris-saclay.fr)**

## Accreditation of Prior Learning

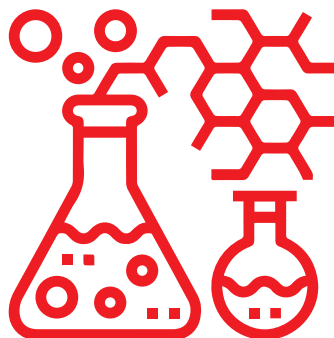
The Accreditation of Prior Learning enables you to have the skills and knowledge acquired in the course of your personal and professional life, outside of traditional educational settings, recognised by a diploma. There are three accreditation frameworks.

**1.** Accreditation of studies, professional experience or personal achievements, known as VAPP: this offers the chance to resume a training course leading to a diploma, without having the pre-requisite diploma.

**2.** Accreditation of acquired experience (VAE): this allows you to obtain all or part of a diploma.

**3.** Accreditation of higher studies (VES): this results in the accreditation of higher education studies previously undertaken in France or abroad.

**Find out all the information about Continuing Education and the Accreditation of Prior Learning at Université Paris-Saclay on [the website](#) or send an email to: [validation.acquis@universite-paris-saclay.fr](mailto:validation.acquis@universite-paris-saclay.fr)**





# Phds

## YOUNG RESEARCHERS IN TRAINING

Doctoral training is training through research leading to a doctoral degree.

It represents a first professional research experience which then opens up a range of jobs in the public and private research field and, more broadly, in one of the many careers which call upon the skills and expertise developed by PhD students, whether specific to their field of research or cross-disciplinary.

**PhD courses at the University Paris-Saclay incorporates 21 doctoral schools.** Each of these doctoral schools comprises a group of research teams which welcome PhD students into a high-level international scientific environment and enable them to have access to exceptional research facilities. They also offer Phds students a frame of reference and training which enables them to become an accomplished scientist and to prepare for their professional future.

### A choice of 21 doctoral schools:

- Agriculture, Food, Biology, Environment, Health
- Astronomy and Astrophysics, Ile-de-France (AAIF)
- Cancer research: Biology, Medicine, Health
- Law, Economics, Management (DEM)
- Hadamard Doctoral School of Mathematics (EDMH)
- Doctoral School of Waves and Matter
- Physics, Ile-de-France (PIF)
- Electrical, Optical, Bio: Physics\_and\_Engineering (EOBE)
- Therapeutic Innovation: from the Basic to the Applied (ITFA)
- Interfaces: Interdisciplinary approaches/ foundations, applications and innovation (INTERFACES)

- Hadron Particles Energy and Nuclei: Instrumentation, Image, Cosmos and Simulation (Pheniics)
- Public Health (EDSP)
- Chemical Science Molecules, Materials, Instrumentation and Biosystems (2MIB)
- Environmental Science, Ile-de- France (SEIF)
- Social Science and Humanities (SSH)
- Sports, Motor and Human Movement Sciences (SSMMH)
- Plant Sciences: from Genes to Ecosystems (SEVE)
- Science and Technology of Information and Communication (STIC)
- Mechanical and Energy Sciences, Materials and Geoscience (SMEMAG)
- Signalling and Integrative Networks in Biology (BIOSIGNE)
- Structure and Dynamics of Living Systems

### A Doctoral Centre:

This is the administrative department which implements the strategic direction of the doctoral college and the governance of the University.

It coordinates and develops cross-disciplinary training for PhD students. It is responsible for monitoring the career development of PhD students and developing relations with the socio-economic environment.

It ensures the promotion and visibility of Université Paris-Saclay's PhD students.

# Phds (continued)

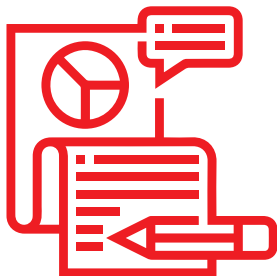
## Continuation to a Phds

Continuation to a Phds is possible after completion of a Master's degree or a degree of a similar standard. For students from countries outside the LMD system, the admissions committees may also decide on equivalence at Master's level.

Publication of subjects and thesis proposals appears on the web pages from December. Application requirements are available on the doctoral schools' websites.

<https://www.universite-paris-saclay.fr/research/avant/comment-postuler>

Depending on the discipline, these topics may be very detailed or more concise. In all cases, candidates are invited to contact the supervisor proposing the subject in order to jointly prepare the full application.



Once your application has been submitted via the ADUM portal to the doctoral school (complete file and recommendations obtained), it will be subject to an admission procedure:

## The admission procedure

- Review of the application
- Interviews with the candidates
- Adjudication by the board or the admission committee

## Registering for a Phds

If you have been selected at the end of the process described above, you must then register via your account on ADUM:

- Mutual commitment of the PhD student, the supervisor, the research unit and the doctoral school on the framework of and arrangements for the doctoral training
  - Individual training agreement
  - Documents required for registration
  - Registration fees
- Registration is then approved by the head of the institution following the proposal by the doctoral school and the recommendation of the supervisor and the research unit
- A student card will be issued for you at the end of this process

You will also need to contact the HR department to set up your employment contract.

Registration must be renewed each year at the beginning of the academic year.

**Find out all the information about PhD courses at Université Paris-Saclay at:**  
<https://www.universite-paris-saclay.fr/recherche/doctorat>









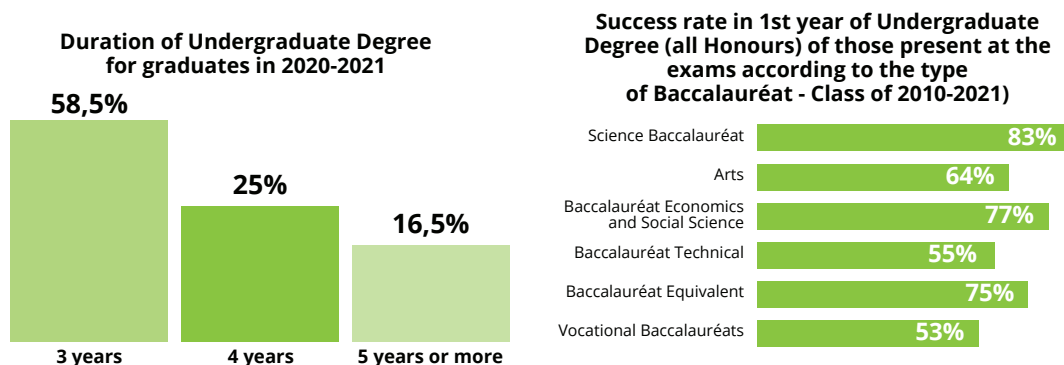
# MAKING A SUCCESS OF YOUR STUDIES AND PREPARING FOR YOUR FUTURE



# Student success and graduate outcomes

The 'Observatoire de la Réussite et de l'Insertion Professionnelle de Direction de la Formation et de la Réussite' (Monitoring Centre for Success and Professional Integration of the Department for Training and Success) is a unique statistics dissemination portal for Université Paris-Saclay. It is an essential tool for students to support them in developing their study pathway and integration.

It provides data on success in the first cycle of higher education (Undergraduate Degree, DUT, PCSO, etc.) to help upper secondary and university students choose their future direction. This data is presented by degree and major subject area, as well as by type of baccalauréat.



Université Paris-Saclay educates thousands of students each year in various disciplines. It is interested in the future of graduates of Vocational Undergraduate Degrees, Master's and engineers from Polytech Paris-Saclay and their integration into the socio-economic world after the end of their course.

To this end, the Hub conducts surveys at 6 and 30 months after graduation. All the data resulting from it is made available to you: the rate of integration, the type of jobs, the salary level, the location of the jobs, the time taken to access the job as well as a directory of professions.

This information is grouped by year, by degree and by subject:

Survey 6 months after graduation in 2020	Vocational Undergraduate Degree	Master's Degree
<b>Integration rate (Number of respondents / number of respondents in employment or looking for work)</b>	<b>91%</b>	<b>80%</b>
<b>Ratio of managers and associate professions</b>	<b>95%</b>	<b>98%</b>
<b>Percentage of secure jobs (permanent contracts, self-employed professionals, civil servants)</b>	<b>82%</b>	<b>46%</b>

Source: ORIP - Surveys on the future of graduates 6 months after graduation (Université Paris-Sud and Université Paris-Saclay).

Contact: [ofip.pilotage@universite-paris-saclay.fr](mailto:ofip.pilotage@universite-paris-saclay.fr)

Additional information: [www.universite-paris-saclay.fr](http://www.universite-paris-saclay.fr), rubrique Formation > réussite et devenir des diplômés



# Direction and development of your research project

## RECEIVE APPROPRIATE SUPPORT

The Department for Training and Success (DFR) at Université Paris-Saclay will advise and guide you about your chosen pathway and answer any questions about your training course and projects.

The **Guidance and Development of Research Projects Hub (OCPE)** is at your disposal to:

- Inform you about jobs, career opportunities, application procedures, etc.
- Advise you about your study pathway, further studies, gap year project.
- Develop your research project step by step (get to know you, identify professional fields which will suit you, explore various sectors of activity identify professions in order to get the right training).
- Inform you about jobs, career opportunities, application procedures, etc.

**Throughout the year, the OCPE hub offers you:**

- Individual interviews to provide you with information, to reflect on your aspirations, your interests and more generally the direction you wish to give to your research project.
- Group information sessions on various topics: study pathways, orientation, reorientation, Parcoursup, health studies, building a gap year project, etc. These are open to everyone, whatever their field of study.
- Group workshops to support you throughout your course: developing your research project, choosing your Master's Degree, writing your Personal Study Plan, etc.

**Registration by email to [accueil.oip@universite-paris-saclay.fr](mailto:accueil.oip@universite-paris-saclay.fr) or by telephone to +33 (0)1 69 15 54 47 (Orsay), +33 (0)1 40 91 17 98 (Sceaux)**



# Direction and development of your research project

## Several tools are available to you:

- Documentation on higher education in France and abroad
- Booklets on reorientation
- Information on professions, sectors of activity and career opportunities
- Resources to target recruiters (company directories, employment resource guide)
- A multimedia space in building 333 (free access computers, software for guidance).

## Where to find our orientation professionals on site

Antenne d'Orsay (91)  
Building 333 – 1st floor  
Rue du Doyen André Guinier  
RER B – Bures-sur-Yvette  
+33 (0)01 69 15 54 47

Antenne de Sceaux (92)  
Building B – Lower Ground Floor  
54 Bd Desgranges  
RER B – Robinson  
+ 33(0)1 40 91 17 98



The OCPE hub also takes part in open days, fairs and education forums which allow you to meet face-to-face with counsellors, guidance professionals, teachers, etc., so that you can get more information about your study pathway.

**Find out more information about future pathways at Université Paris-Saclay and upcoming events on [le site internet](#) or send an email to: [accueil.oip@universite-paris-saclay.fr](mailto:accueil.oip@universite-paris-saclay.fr)**

# Student entrepreneurship

**At Université Paris-Saclay, the Student Entrepreneurship Hub of the Department of Training and Success offers you facilities which enable you to:**

- Explore entrepreneurship
- Develop an idea
- Have support in carrying out your project
- Train you to create your own business with 4 University Diplomas.

Whether you already have a project or a specific idea for starting a business, or just an interest in the adventure of entrepreneurship, several programmes are available to you: Entrep', Maturaction, diploma courses, SNEE and D2E.

## Focus on the 4 University Diplomas

These practical courses, which are organised around the creation of a real or fictitious project, give you all the resources you need to discover entrepreneurship and business creation. The University Diplomas are designed to be combined with another occupation or course. As a result, they are delivered as evening classes and in a blended face-to-face/remote working format.

*DU Entrepreneurship / DU Intrapreneurship / DU Entrepreneurship, Law, Digital / DU Creation of Innovative Start-ups*

Students who are project developers can also find out about the PEPITE PEIPS schemes for students who wish to continue their studies while developing a business creation project:

## Focus on SNEE and D2E

### • The National Student Entrepreneur

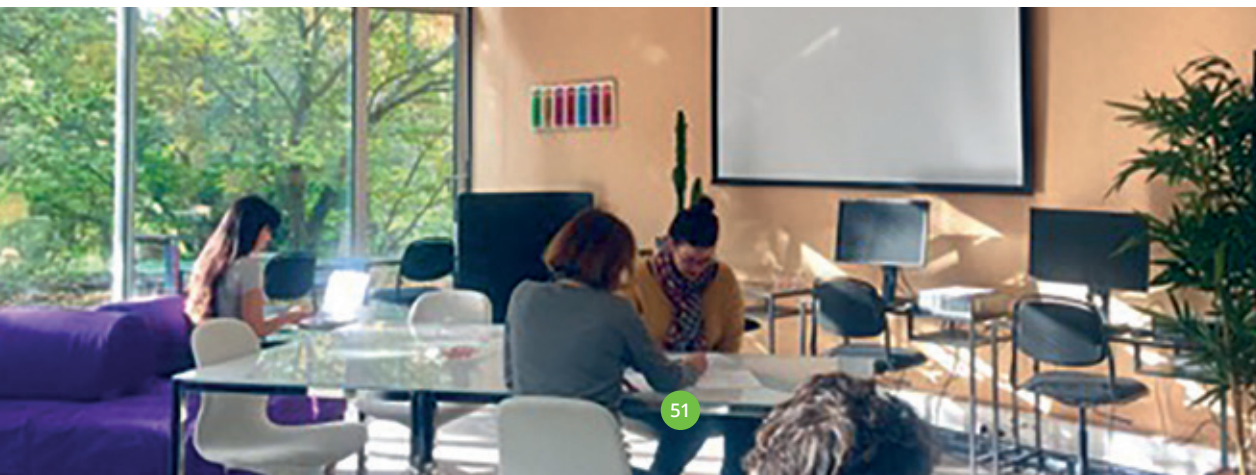
Status means you can attend sessions and workshops related to your project while benefiting from the PEPITE partnerships

• **The Student-Entrepreneur Diploma** is a student project support programme which allows you to develop your business plan through group workshops and individual tutoring.

All these schemes are aimed at local students, PhD students and graduates.

We provide you with a friendly and quiet co-working space to work on your projects and encourage collaborative work in building 330 (Campus d'Orsay): meeting/brainstorming space, computers, printer, 3D printer, video projector, library, relaxation area, games, etc.

**Find out all the information about Student Entrepreneurship at Université Paris-Saclay on [le site internet](#) or send an email to: [entrepreneuriat@universite-paris-saclay.fr](mailto:entrepreneuriat@universite-paris-saclay.fr)**





# Integration into the Labour Market, Partnerships and Alumni

## ENTER WORKING LIFE AND BENEFIT FROM A NETWORK OF FORMER STUDENTS

The Department of Training and Success (DFR) at Université Paris-Saclay supports you throughout your studies to develop a professional project which best matches your aspirations and which is in tune with the reality of the working world. The Professional Integration, Partnerships and Alumni hub helps you to develop your application skills in order to find a work placement, a work-study programme, a job or employment. In this way, you can prepare for your entry into working life in the best possible way.

**The Professional Integration, Partnerships and Alumni (IPPA)** hub offers you the opportunity:

- To be supported and guided in your project by professionals, to analyse what you have done in the past and your experience, identify your skills, prepare for a job interview, etc.
- To participate in group workshops to improve your CV/letter of application, make the most of your research and application process, prepare for your job interview in order to be accepted on a work placement, a work-study programme or a job and improve your profile on professional social networks (personal branding).
- To meet the University's partner companies for better professional integration:

virtual meetings, recruitment sessions, forums, round table discussions, etc.

Several tools are available to you:

- The University's **Career Center**: a career area exclusively dedicated to students of Université Paris-Saclay.

You can find out about all the work placements, work-study programmes and job offers from our partner companies and apply

online. You can also participate in various events organised by the University and companies (workshops, virtual forums, round tables, recruitment sessions, podcasts, etc.). The Career Center can be found in the Orientation and Professional Integration section on the University's website.

- **PStage**: a web-based tool for easily creating and managing your work placement agreement (contact your department for more information).
- **The Department of Training and Success' monthly newsletter** to keep you informed of our news.
- The **alumni network** to benefit from the experiences of former students and to start creating your own network of professionals.

### Documentation is available on site:

Antenne d'Orsay (91)  
Building 333 – 1st floor  
Rue du Doyen André Guinier RER B – Bures-sur-Yvette  
+33 (0)01 69 15 54 47

Antenne de Sceaux (92)  
Building B – Lower ground floor  
54 Boulevard Desgranges RER B – Robinson  
+33 (0)01 40 91 17 98

### New

A weekly meeting at the University Library in Orsay every Thursday afternoon.  
407 Rue du Doyen Georges Poitou RER B - Le Guichet

**Find out all the information about Professional Integration at Université Paris-Saclay on [the website](#) or send an email to: [insertion.professionnelle@universite-paris-saclay.fr](mailto:insertion.professionnelle@universite-paris-saclay.fr)**

# Student Jobs, Tutoring and Civic Service

## STUDENT JOBS

Student jobs allow you to acquire your first experiences professionals, to develop new skills and finance your studies.

Paris-Saclay University supports you throughout the year in your search for student jobs compatible with your studies. All recruitment offers of Paris-Saclay University and its partners are broadcast

**on the platform Job Teaser:**

<https://universiteparis-saclay.jobteaser.com>

**To be accompanied in your research, contact: [job.etudiant@university-paris-saclay.fr](mailto:job.etudiant@university-paris-saclay.fr)**

## STUDENT TUTORING

Student tutoring (volunteer or remunerated) is also an opportunity to develop your skills and enrich your CV. Student of L2 minimum, you contribute to the success of students and to equal opportunities by supporting younger people get better results, to be more integrated in their establishment and to have more confidence in them. Different forms of tutoring exist: student life, disability, IT, education, etc.

An example of specific tutoring, roped to success is tutoring volunteer and dedicated to college youth and high schools in disadvantaged neighborhoods.

**For more information :**

[egalite.diversite@universite-paris-saclay.fr](mailto:egalite.diversite@universite-paris-saclay.fr)

**For more information on all tutoring:**  
[tutorat.vie-etudiante@university-paris-saclay.fr](mailto:tutorat.vie-etudiante@university-paris-saclay.fr)

## CIVIC SERVICE DEVICE (COMPENSATED)

You are between 18 and 25 years old and you want to commit to a mission of general interest, the service system civic may interest you if you are considering a gap year or if you have a light schedule.

You will help strengthen the bond social and develop skills useful for your future project while participating in a human experiment rewarding in various fields (sport, environment, disability, health, etc.).

**For more information :**

[service.civique@universite-paris-saclay.fr](mailto:service.civique@universite-paris-saclay.fr)

As part of the student engagement, your experience as a tutor or volunteer in civic service may be recognized and valued in your career academic and professional.

# Language learning

## UNIVERSITÉ PARIS-SACLAY PUTS GREAT EMPHASIS ON LANGUAGE LEARNING, MULTILINGUALISM AND INTERCULTURALITY

The Languages and Interculturality Unit at Université Paris-Saclay provides a framework for a range of educational facilities available to the community at Université Paris-Saclay. Once you are registered at Université Paris-Saclay, you get access to many modules or tools to improve your language level in an environment which favours interculturality and internationalism.

Université Paris-Saclay offers the option to study one or more of the 12 foreign languages taught (FLE - French as a Foreign Language, English, Arabic, German, Chinese, Spanish, Hebrew, Italian, Russian, Swedish, Japanese, Portuguese) on its various sites.

**Where can I learn about languages and cultures? Go to:**

<https://www.universite-paris-saclay.fr/formation/internationalisation-langues-et-cultures>

### CONTACT

[international-engagement@universite-paris-saclay.fr](mailto:international-engagement@universite-paris-saclay.fr)



# International mobility

**Université Paris-Saclay offers its students many opportunities for travel abroad, whether it is for a work placement or a study stay from their second year of study.**

Going abroad during their course allows students to discover a new way of learning, to meet another culture and embrace the world, improve their command of a foreign language and learn more about themselves.

## COURSES AND WORK PLACEMENTS

Students at Université Paris-Saclay have the option to study abroad for one or two semesters.

For students at the Jean Monnet Faculty (Law, Economics, Management), the Faculty of Medicine, the Faculty of Pharmacy, the Faculty of Science, the Faculty of Sport Science, Polytech Paris-Saclay, IUT Cachan, IUT Orsay and IUT Sceaux all the possible destinations are available on the University's website

### Additional information:

[www.universite-paris-saclay.fr](http://www.universite-paris-saclay.fr),

Education section > Going abroad > Period of study abroad

See the list of partner universities on the University's website, Education section > List of partners

### CONTACT

[outgoing.international@universite-paris-saclay.fr](mailto:outgoing.international@universite-paris-saclay.fr)

Students at the Grandes Écoles AgroParisTech, CentraleSupélec, ENS Paris-Saclay, IOGS or at the associate institutions of Université d'Évry and Université de Versailles St-Quentin-en-Yvelines should contact the international relations department of their institution of registration to find out about the various programmes and funding

## MENTOR PROGRAMME

The Buddy programme is a free international mentoring programme dedicated to students newly arrived in France.

It allows mentors/sponsors to discover new cultures and interact with students from all over the world. The mentor programme is also an opportunity to practice a foreign language or to learn more about a particular country.

It enables mentees to be helped with administrative procedures and to facilitate their integration into a new establishment and the study environment. The two students will get to know each other during outings and cultural, sporting and social activities organised by Université Paris-Saclay.

### Additional information:

[www.universite-paris-saclay.fr](http://www.universite-paris-saclay.fr),  
Education section > Going abroad

### CONTACT

[buddy.programme@universite-paris-saclay.fr](mailto:buddy.programme@universite-paris-saclay.fr)



# International mobility (continued)

## SUMMER SCHOOLS

Laboratories and establishments within Université Paris-Saclay offer international summer schools in a wide range of subject areas for international visitors throughout the year.

They are open to different groups at Université Paris-Saclay, as well as from other French or international universities.

Summer schools at Université Paris-Saclay are an opportunity

- to benefit from the excellent teaching provided by the teaching community at Université Paris-Saclay and by internationally renowned scientists.
- Access state-of-the-art facilities and laboratories
- Deepen knowledge and expertise in your field
- Develop a scientific and professional network
- Enjoy a rich cultural and social programme together with an international group

In 2021, five schools were organised face-to-face or virtually in the following subject areas: Public Health, Information Technology, Life Sciences and Health, Science and Light and Physics.

### **Additional information:**

[www.universite-paris-saclay.fr](http://www.universite-paris-saclay.fr)

rubrique Formation > Summer schools

## EUGLOH

Ludwig-Maximilian of Munich University (Germany), Lund University (Sweden), University of Porto (Portugal), University of Szeged (Hungary) and Université Paris-Saclay have joined forces to create a pilot European University which is guided by European values and committed to education in the global issues of health and well-being.

Through the European Alliance for Global Health

- (EUGLOH), the ambition of these five universities is to pool their expertise and resources in order to be able to offer the best possible education to their students and, as a result, become a world-class higher education and research partnership based on the excellence of the teaching, as well as on state-of-the-art research and facilities.

Students from Undergraduate Degree level to PhD level have the opportunity to benefit from experience overseas (physically or virtually) in one of the partner universities, to participate in summer schools, to attend workshops, to interact with students from the 4 partner universities and to participate in a transnational university campus life.

### **Additional information:**

[www.eugloh.eu](http://www.eugloh.eu)

**and on the social networks**

**Facebook, Twitter and Instagram**  
**(@Eugloh\_network)**



## GATE

The 'Guichet d'Accueil des Talents Étrangers' (Foreign Talent Welcome Desk) is a physical space for welcoming international nationals from the Saclay plateau and helps them with their administrative procedures so that they can settle in France with complete peace of mind.

In the booming Paris-Saclay area, the Palaiseau sous-Préfecture, Université Paris- Saclay and the 'Science Accueil' association have joined forces to set up an effective structure for the different target groups of the R&D centres and to make the hospitality of this cluster attractive and visible on a global scale. The GATE coordinators are as follows:

- Université Paris-Saclay
- The Palaiseau sous-Préfecture
- The 'Science Accueil' association - an organisation which has been specialising for 20 years in the support of national and international scientists arriving in the Ile-de-France region and their families. Together, they run the Foreign Talent Welcome Desk, which brings together multiple agencies and operators under a single banner.









# LIVING AT UNIVERSITÉ PARIS-SACLAY



# Arts and culture

## • Cultural workshops

Led by professionals (directors, writers, musicians, photographers, etc.) these workshops offer the chance to try out all sorts of artistic and cultural activities and to develop skills (written and oral expression, creativity, etc.). **Certain workshops qualify for bonus points or ECTS credits as an introduction Teaching Unit (TU).**

## • Events

Events such as concerts, festivals, theatre performances, etc. can be enjoyed throughout the year on the University's various sites.

If you sign up for the culture newsletter, you will not miss any events!

Here, you can also find special offers for concerts and exhibitions in partner venues and cultural centres.



## • Cultural news

Find out about all the cultural news at Université Paris-Saclay on its calendar of 'arts and culture' events:

[www.universite-paris-saclay.fr/evenements](http://www.universite-paris-saclay.fr/evenements)

To find out more:

[www.universite-paris-saclay.fr/culture](http://www.universite-paris-saclay.fr/culture)

## CONTACT

[arts.culture@universite-paris-saclay.fr](mailto:arts.culture@universite-paris-saclay.fr)



# Science and society

Université Paris-Saclay offers a number of initiatives which promote meetings and interaction between the scientific community and society as a whole.

## THE DIAGONALE PARIS-SACLAY

The Diagonale Paris-Saclay supports and offers advice for any science and community initiatives led by the student community, lecturers, researchers and administrative and technical staff at Université Paris-Saclay. It handles the coordination between these players and also with partners in the region (local authorities, technical and industrial scientific culture organisations, associations, etc.).

**Additional information:**

[www.ladiagonale-paris-saclay.fr](http://www.ladiagonale-paris-saclay.fr)

### CONTACT

[la-diagonale@universite-paris-saclay.fr](mailto:la-diagonale@universite-paris-saclay.fr)

Each year, the University takes part in **European Heritage Days** and the **Festival of Science**. It also takes part in several other festivals (Ciné Fac Sceaux at the Jean Monnet Faculty, the robotics festival with IUT Cachan, etc.).

## 'MISS' (INTRODUCTION TO AND AWARENESS OF SCIENCE CENTRE)

MISS is a fun and challenging space where students (from CE2 to 3e), their teachers and young people can experiment together. Here, pupils learn about scientific and experimental approaches, as well as about the world of research during a scientific workshop (on a theme).

Are you starting the first year of your degree? Become a trainee teacher as part of the 'MISS Small Workshops' (offered in some study courses).

**Additional information:**

[www.miss-psaclay.universite-paris-saclay.fr](http://www.miss-psaclay.universite-paris-saclay.fr)

### CONTACT

[sciences.miss@universite-paris-saclay.fr](mailto:sciences.miss@universite-paris-saclay.fr)

## WHERE ART AND SCIENCE MEET

Université Paris-Saclay supports initiatives which promote the presence of artists on campus and the cross-over between art and science. The Scène de Recherche at ENS Paris-Saclay is a place of artistic experimentation and research-creation which brings together the arts, sciences and society.

**Further information about the Scène de recherche:** [www.ens-paris-saclay.fr/culture/scene-de-recherche](http://www.ens-paris-saclay.fr/culture/scene-de-recherche)

## EXPLORATION OF ARTISTIC, SCIENTIFIC AND ARCHITECTURAL HERITAGE

Université Paris-Saclay has many objects, living organisms and collections which are part of its scientific heritage and provide a better understanding of its history and the origins of the research currently in progress. These collections can be explored through exhibitions and fun activities, such as an escape game. The campus also houses iconic buildings and works of art.

**More information is available on the 'heritage' page** [www.universite-paris-saclay.fr/patrimoine-scientifique](http://www.universite-paris-saclay.fr/patrimoine-scientifique)

# Sport

Whether you are a student or a member of staff at Université Paris-Saclay, the University Department of Physical and Sports Activities is your perfect sports partner. Here, you can relax, maintain yourself physically and mentally, challenge yourself and enjoy the opportunity to make new friends.

At the start of the academic year, and at a level which suits you, **come and participate in one or more of the 82 sports on offer.**

At the start of the school year, and depending on your level, come and practice one or more of the 82 sports programmed. The start of the 2022-2023 school year is marked by the delivery of the new complex.

Moulon university sports center (Gif-sur-Yvette). This equipment is composed of: 3 gymnasiums, 1 gymnasium on the apparatus, 1 climbing area, 4 indoor courts tennis, 1 dance studio, 1 weights room, 4 synthetic pitches and 1 complex of athletics. In addition to the Institute of Entrepreneurship and Innovation (IEI) of Fontenay-aux-Roses, 3 rooms dedicated to artistic activities, well-being and muscle building, of combat, will be opened.

Thanks to the Contribution de Vie Étudiante et de Campus (CVEC), the SUAPS invites you to practice for free on two slots/week, year-round. For staff, the Membership fee remains unchanged: €40 per year for 2 slots. Beyond that, each slot will be charged 10€/year. A specific bodybuilding card is set up (40 € per year for students, and €60 for staff). This card allows you unlimited practice, supervised by the managers of our four open rooms 100 hours per week including weekends.

Another novelty: Opening of University Sports Performance Poles in Badminton (Gif-sur-Yvette), Futsal and Athletics (Évry), which allow you to start or pursue a sporting project thanks to an offer of additional time slots, a specialized supervision and modern structures. Apply on the sports portal because the number of places is limited. All procedures are done online: registration, possible payment and downloading of the membership card on smartphone.

Wherever you are, discover our course offers on the sports portal and pay from home you. The sports portal extends to the Grandes Ecoles and associated member universities of the University.

Please note: The SUAPS card is valid for one academic year, it is non-refundable.

**Further information:** [www.sports.universite-paris-saclay.fr](http://www.sports.universite-paris-saclay.fr)

## CONTACT

[service.suaps@universite-paris-saclay.fr](mailto:service.suaps@universite-paris-saclay.fr)



# Student Centre

## THE PARIS-SACLAY CENTRE FOR STUDENTS (MAPS)

The Paris-Saclay Centre for Students (MAPS) is a centre for students funded by the Île-de-France region and located on the Bures-Orsay-Gif campus.

This beautiful building houses facilities mainly dedicated to official student associations, including a 'sound' centre with a rehearsal studio, two recording studios and a set-up room, as well as reception and activity rooms open to all (multi-purpose room, cafeteria, etc.). As well as the facilities and student associations, students can also enjoy work and relaxation areas here.

Students can also reserve rooms whether they belong to an association or not to work in groups on their own student community projects.

The student associations located in MaPS manage the building and coordinate the booking of rooms and events within it. This building encapsulates Université Paris-Saclay's policy on student life, which is based on developing the quality of student life, affiliation and empowerment through accountability, encouraging the emergence of talent, as well as engagement in campus life and academic success.

### Further information:

[www.universite-paris-saclay.fr](http://www.universite-paris-saclay.fr)

Campus life section > Centre for students

### CONTACT

[conseil.maps@gmail.com](mailto:conseil.maps@gmail.com)







by alexis brown de unsplash.com

## Community life

The two words which best describe community life at Université Paris-Saclay are rich and eclectic!

Université Paris-Saclay is very active, with over 600 student associations, including sports associations, arts associations, student offices, cultural associations, humanitarian associations and camera clubs, etc. Being part of an association is a chance to meet other students and to participate in the life of the University. There are so many ways to open up to the outside world and to feel part of the community.

You can find the list of student associations at Université Paris-Saclay and its member universities on the website: [www.universite-paris-saclay.fr](http://www.universite-paris-saclay.fr), Campus life section > Student associations.

The **FSDIE (Fund for Solidarity and Development of Student Initiatives)** and the **Call for Campus Community** Life Projects provide financial support for student association projects.

Communication services at the University, member universities, partner institutions and associate institutions are effective intermediaries for publicising events at Paris-Saclay - please get in contact.

### **Additional information:**

[www.universite-paris-saclay.fr](http://www.universite-paris-saclay.fr)

Campus Life Section > Student associations

### **CONTACT**

[associations.etudiantes@universite-paris-saclay.fr](mailto:associations.etudiantes@universite-paris-saclay.fr)

# Digital services

Université Paris-Saclay provides everyone with a digital environment and tools for studying and working: computer rooms with controlled access and free access, WiFi access available on all campuses, individual messaging and many other digital services

You must activate your IT account to make use of these services.

## ACCESS TO DIGITAL SERVICES

As soon as you register at the University and you have received your student card, you should:

1. Activate your digital account <https://adonis.universite-paris-saclay.fr/activation>
2. Wait at least 4 hours (or the next day if you registered after 10 pm)
3. Log in to the site <https://identiteutilisateur.fr/> to create your shared eCampus account.
4. Wait until the next day for your shared account to be active <https://ecampus.paris-saclay.fr/>

## Tutorial vidéo :

<https://portail.universite-paris-saclay.fr/services-numeriques/Documents>

shared account have been activated, you will be given a unique username and password which will allow you to access all the University's digital services.

## EMAIL ADDRESS AND MESSAGING

With the creation of your IT account, you will have an email address which is valid for your entire time at the University. The address will be:

**name.surname@universite-paris-saclay.fr**

The university provides you with a comprehensive email platform to check your emails, which includes services for:

- Messaging with file sharing
- Shareable planner with resource reservation
- Management of contacts with address book sharing
- Task management with reminders
- Sharing of documents
- Instant messaging (tchat), etc.

All these services can be accessed from any workstation or mobile phone using automatic syncing.

## Access to the service:

<http://hermes.universite-paris-saclay.fr>

Documentation dedicated to messaging tools, including FAQ, is available at the following address:

<https://zutil.dsi.universite-paris-saclay.fr>

## THE PARIS-SACLAY PORTAL

This access portal to the University's digital resources and services allows you to quickly access information on the organisation of the institution and digital services, such as email, transfer of large files and educational platforms, etc.

## Access:

<https://portail.universite-paris-saclay.fr>

## THE ECAMPUS EDUCATIONAL PLATFORM

This platform allows you to access the activities and documents uploaded by your lecturers.

To access it, you must activate your shared account (see above in this document).

## Access:

<https://ecampus.paris-saclay.fr/>



# Digital Services

## WIFI

Université Paris-Saclay has two WiFi networks available for accessing the internet wirelessly:

- An access service via the **Eduspot network** across all the University's sites and in establishments who are members of the RENATER identity federation (most French universities and research institutions). This access does not require any prior configuration **but is not secure**.
- An access service via the **secure Eduroam network** across all the University's sites and and if you are in any of the Renater federation's member universities and research institutions (most of Europe and much of the world). Access requires prior configuration  
Additional information:

### Additional information:

<http://wifi.dsi.universite-paris-saclay.fr/>

## MICROSOFT OFFICE 365 PLATFORM

The University provides free **access to the Microsoft Office 365** platform from your personal computers/tablets/phones. This platform allows tools from the traditional Microsoft Office suite to be downloaded (Word, Excel, PowerPoint, etc.) This service is active as long as you are a student at the University.

Acces : <http://portal.office.com>



# Libraries

**Université Paris-Saclay allows you access to the 30 libraries and document services in its network. The student card enables you to borrow documents and access the many services available**

The libraries have important collections of documents available to the student community and University staff.

- Books, theses, general or specialist journals, daily press online or in paper format

- Online documentation (databases, journals, e-books), available 24/7.

These resources, as well as any services, can be accessed remotely using **the Focus tool**:

<http://focus.universite-paris-saclay.fr>.

Vous pourrez les consulter après activation de votre compte informatique et selon votre lieu d'inscription.

## MANY SERVICES ARE AVAILABLE IN OUR LIBRARIES

- Training and assistance with research: libraries offer training sessions on documentary research and software to manage your own bibliography automatically.

This training is available online through self-registration on Ecampus and may also be integrated into courses. You can also ask for help or information from the librarians on duty or by appointment. They are always on hand to assist you;

- Video tutorials to help you use the documentary services and tools available to you

- Interlibrary loans (PEB) to obtain a document from another library if your library does not have it. You can make your requests in person or online

- Cultural exhibitions and events such as the Festival of Science, the Reading Night,

the First Novel Award (ENS Paris-Saclay), the Human Rights

Film Festival (Sceaux campus), etc.

- Group work rooms

- Computer terminals and access to WiFi

- Printing from laptops, tablets or library computers, photocopying and scanning in some libraries

- A user account to see your current loans, extend them, suggest a purchase and reserve documents online.

### Additional information:

[www.universite-paris-saclay.fr](http://www.universite-paris-saclay.fr),

rubrique Vie de campus > Bibliothèques

### CONTACT

[bib.univ@universite-paris-saclay.fr](mailto:bib.univ@universite-paris-saclay.fr)



# Catering

Several types of food and drink outlets are available to students on the various campuses.

The **'Centre Régional des Œuvres Universitaires et Scolaires' - CROUS** - are key partners of Université Paris-Saclay and provide the CROUS food and drink outlets which are open to all.

**resto U** gives you the opportunity to enjoy a balanced meal at a low cost. You can choose a dish accompanied by 3 'options' of your choice, including starters, cheese, dairy products or fruit. The choice is extensive and there is no shortage of combinations! The resto Us are managed by CROUS.

The cafeterias may be managed by CROUS or by private companies. As result, prices may vary between cafeterias. However, the prices on campus overall are reasonable and much less than those off campus. For example, a coffee costs on average €0.70.

**To find out about all the university restaurants and cafeterias at Université Paris-Saclay, the best places and opening times, please go to:**  
<https://www.universite-paris-saclay.fr/vie-de-campus/restauration>

## CONTACT

[vie.etudiante@universite-paris-saclay.fr](mailto:vie.etudiante@universite-paris-saclay.fr)



# Accommodation

This is one of the most important steps every year for students arriving at one of the University's campuses, which are mainly located south of Paris. Depending on the university department, partner institution or associate member university to which you are affiliated, your course may be taking place at Kremlin-Bicêtre, Sceaux, Châtenay-Malabry, Orsay, Bures, Cachan, Évry, Versailles, Saint-Quentin or Vélizy-Villacoublay. All these locations are on RER lines B, C or D, and about 30 to 50 minutes from Paris.

Finding accommodation close to your place of study is a major factor in student success, but it can quickly turn out to be a headache, particularly in the Ile-de-France region where the housing problem is acute and prices are higher than elsewhere.

To help you with the process, the Student Life and Equal Opportunities Department has **created an online accommodation guide for students which can be downloaded or viewed** at all of the University's student life reception points. This guide includes practical information, such as the list of financial aid available, how to put together a file once you have found accommodation, how to avoid the main scams, where to find alternatives to CROUS student accommodation (very much

**Contact :**  
[logement.etudiant@universite-paris-saclay.fr](mailto:logement.etudiant@universite-paris-saclay.fr)

## ACCOMMODATION GRANTS

### VISALE :

The Caution Locative Étudiante (Student Rental Deposit) is a free State guarantee enabling students under 30 years of age without personal guarantors to access housing more easily.

### Further information:

<https://www.visale.fr>

### LA GARANTIE LOCA-PASS :

a no-cost advance for student employees, scholarship holders and trainees under 30 years of age which provides the amount of the security deposit required by the landlord at the time of signing the lease.

### Further information:

<https://www.actionlogement.fr/la-garantie-loca-pass>

### L'APL :

The 'Aide Personnalisée au Logement' (Personal Housing Assistance) is aimed at students living in accommodation which is subject to agreements between the landlord and CAF. Social housing is included in this.

### L'ALS :

'Allocation Logement à caractère Social' (Social Housing Allowance) is aimed at students. It is calculated according to your income.

**L'ALF** is calculated according to family income and the level of your rent. The amount is deducted from the rent and paid to the owner or tenant.

### Further information:

<http://www.caf.fr>

# Accommodation

**You are looking for accommodation close to your place of training or one of the campuses from Paris-Saclay University?**

The university provides you with an interactive housing guide to help you and facilitate your search for accommodation.

**All information about:**

[https://www.universite-paris-saclay.fr/sites/default/files/2021-04/Guide%20of%20interactive\\_housing\\_13-4-2021.pdf](https://www.universite-paris-saclay.fr/sites/default/files/2021-04/Guide%20of%20interactive_housing_13-4-2021.pdf)



# Health

The University Health Service (SSU) welcomes students at Université Paris-Saclay for free.

The SSU team is there to help you complete your studies in the best physical, mental and social circumstances.

The multi-disciplinary team is comprised of doctors, nurses, psychologists, a dietician, a smoking cessation advisor, a prevention and health promotion officer and a management assistant. It is there for you throughout the academic year in the

## The Goals of the SSU:

- **A mandatory preventive medical check-up** by invitation for students, which must be carried out during their university education.
- **Medical consultations** at the student's request. During this consultation, the SSU doctor can prescribe screening and treatment for Sexually Transmitted Infections (STIs), contraception, vaccinations, nicotine substitutes and a chest X-ray
- **Consultations with the nurses**, dietician or smoking cessation advisor
- **Interviews with psychologists**, who are available for any request for psychological support
- **Arrangements regarding university courses** for students with a disability.
- **Medical check-ups for students exposed to specific risks**
- **Medical emergencies**
- **Information campaigns and prevention initiatives**

## CONTACTS

[sante-etudiants@universite-paris-saclay.fr](mailto:sante-etudiants@universite-paris-saclay.fr)

Further information is available at:

<https://www.universite-paris-saclay.fr/vie-de-campus/sante-et-bien-etre>



## OPENING OF A HELPLINE FOR STUDENTS

Nightline is a helpline for students managed by volunteer students. What is a helpline? It is an understanding ear, a kind word and non-judgemental listening. Since the start of the 2020 academic year, Nightline Saclay has been open to students at Université Paris- Saclay.

The service is available every evening from 9.00 pm to 2.30 am via the phone or tchat.

### Contact :

FR : 01 85 40 20 10

EN : 01 85 40 20 00

### To find out more:

<https://www.nightline.fr/paris>

[presidence@nightline-saclay.fr](mailto:presidence@nightline-saclay.fr)



# Protective measures

**FACING THE VIRUS,**  
every gesture counts.



**Cough or sneeze into your elbow or soap and water, or failing that with a sanitizer**



**Wash hands regularly with soap and water, or by default, with a hydro-alcoholic solution**



**Blow your nose into a disposable tissue**



**Avoid touching your face**



**In addition to these measures, wear a mask when the distance of one metre cannot be respected**



**Keep at least one metre away from others**



**Greet people without shaking hands and do not embrace**



**Ventilate each room regularly**

**Further information:**



# Disability and studies

Université Paris-Saclay is committed to enabling students with disabilities (ESH) to access all their courses

## WHAT IS THE PROCEDURE?

If you feel that you need to have your studies and/or exams modified ('Plan d'Accompagnement de l'Étudiant Handicapé' - PAEH), you must be registered at Université Paris-Saclay and contact the disability department:

- 1. Make an appointment with a doctor from the University's student preventive medicine service (SUMPPS)** who will assess, on the basis of your medical file, any modifications required during an interview. The doctor will then draw up a modification plan which will be given to you. These modifications can be re-evaluated and modified as required throughout the year.
- 2. Send your modification plan to your department's disability and studies service.** The disability advisor will then inform the educational team and all necessary measures will be put in place

## EXAMPLES OF PROPOSED MEASURES FOR PERMANENT OR TEMPORARY DISABILITY

- **Arrangements for exams:** additional time, examination secretariat, provision of specific materials, separate room, etc.
- **Course arrangements:** note-taking, accessibility of premises, educational support, tutoring, adaptation of course materials, adaptation of timetables or the curriculum, etc.

The disability services support students in their studies, in their participation in student life and in their professional integration.

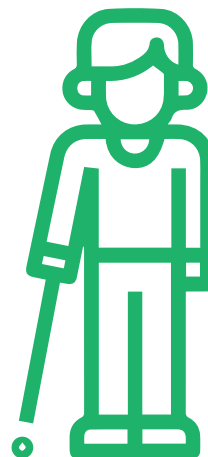
The University regularly organises initiatives to raise awareness of disability issues within the university community.

## Additional information:

[www.universite-paris-saclay.fr](http://www.universite-paris-saclay.fr), [rubrique Vie de campus > Handicap et études](#)

## CONTACT

[handicap.etudiant@universite-paris-saclay.fr](mailto:handicap.etudiant@universite-paris-saclay.fr)



# Grants, financial and social assistance

## SCHOLARSHIPS BASED ON SOCIAL CRITERIA

**Scholarships are granted by the CROUS for one year.** Please note:

renewals are not automatic!

Every year, students need to apply for scholarships between January and May by logging in online at: [www.messervices.etudiant.gouv.fr](http://www.messervices.etudiant.gouv.fr)

Payment of scholarships requires attendance at lecturers and examinations. The criteria taken into account can be consulted on the website [www.crous-versailles.fr](http://www.crous-versailles.fr)

## ASSISTANCE WITH THE PURCHASE OF A LAPTOP, A TABLET AND HELP WITH AN INTERNET CONNECTION

The AMII commission (Individual Hardware and Computer Support) awards students (on the basis of social and educational criteria) financial assistance for the purchase of this equipment.

If you would like to receive this assistance, please contact the Department of Student Life and Equal Opportunities (DVEEC). The Department can also loan out laptops.

### CONTACT

[aides.etudiant@universite-paris-saclay.fr](mailto:aides.etudiant@universite-paris-saclay.fr)

## AGORAÉ PARIS-SACLAY

The AGORAÉ community-based, co-operative grocery shop provides students in financial difficulty with food and basic necessities. The prices are 80% to 90% lower than market prices.

This grocery shop is located in building 308 (1st floor) of the Orsay University campus. Students wishing to use it can fill in a recipient's form at the association's offices or with the welfare officers in building 332 (2nd floor).

### CONTACTS

**CROUS social service:** [service-social.paris-saclay@crous-versailles.fr](mailto:service-social.paris-saclay@crous-versailles.fr)

**Contact for AGORAÉ:**

[contact@agorae-paris-saclay.fr](mailto:contact@agorae-paris-saclay.fr)

## INDIVIDUAL SOCIAL ASSISTANCE FROM THE UNIVERSITY - ASIU

Individual Emergency Social Assistance (ASIU) makes it possible to provide individual financial assistance to students in difficulty at Université Paris-Saclay as quickly as possible. It takes into account any new, unforeseeable situations which may arise during the course of study. It cannot be used to replace the student's own sources of income (grants, other income). It can be combined with other assistance. Contact the CROUS social service, which is responsible for guiding you and assisting you in putting together your application, if you are eligible for this assistance.

### CONTACT

[service-social.paris-saclay@crous-versailles.fr](mailto:service-social.paris-saclay@crous-versailles.fr) and [aides.etudiant@universite-paris-saclay.fr](mailto:aides.etudiant@universite-paris-saclay.fr)

The University is also partnership with associations such as Restos du Coeur, the Order of Malta, Emmaus les Ulis.

## Grants, financial and social assistance

**Specific aid for students under 35 experiencing particular difficulties** In order to best respond to the individual situations of students, specific support may be provided. It can take two forms:

- either an annual allowance granted to students suffering with long-term difficulties
- or a one-off payment to provide rapid and individual financial assistance to students who are temporarily experiencing serious difficulties.

**Additional information:**

<https://www.crous-versailles.fr/aides-sociales/demander-aides-specifiques/>

### **Assistance for diversity in the public sector**

The assistance for diversity in the public sector is intended to financially support the most deserving candidates in their preparations for certain public sector competitive examinations. It is means-tested and based on merit.

**Access the form at:**

<https://www.service-public.fr/particuliers/vosdroits/R54101>

**Additional information:**

[www.universite-paris-saclay.fr](http://www.universite-paris-saclay.fr)

Student Life section > Scholarships and assistance



# A committed and inclusive university



## SUSTAINABLE DEVELOPMENT

The issues of sustainable development, from combating climate change, the preservation of biodiversity and the protection of resources, to understanding behavioural drivers and social and economic consequences are at the heart of Université Paris-Saclay's concerns.

Several initiatives take place throughout the year in Université Paris-Saclay's establishments (themed webinars, a cycling and alternative mobility day, an anti-smoking campaign, participation in the European Sustainable Development Week, etc.)

### CONTACT

#### Sustainable Development Hub

[developpement.soutenable@universite-paris-saclay.fr](mailto:developpement.soutenable@universite-paris-saclay.fr)

Further information: [www.universite-paris-saclay.fr/luniversite/nos-projets-identitaires/developpement-soutenable](http://www.universite-paris-saclay.fr/luniversite/nos-projets-identitaires/developpement-soutenable)



## EQUALITY-DIVERSITY UNIT

Equality between men and women, the social mix, disability, etc. The equal participation of all members of society, respect for diversity and the fight against discrimination are major challenges in the path to success and growth at Université Paris-Saclay.

An Equality and Diversity Unit has been put in place to encourage tangible, cross-disciplinary initiatives. Numerous awareness-raising activities are organised throughout the year (equality week, exhibitions, campaign against period poverty, pathways to success).

### CONTACT

Equality-Diversity Unit,

[egalite.diversite@universite-paris-saclay.fr](mailto:egalite.diversite@universite-paris-saclay.fr)

Further information at: [www.universite-paris-saclay.fr/luniversite/nos-projets-identitaires/egalite-diversite-handicap](http://www.universite-paris-saclay.fr/luniversite/nos-projets-identitaires/egalite-diversite-handicap)

## COMBATING SEXISM AND HARASSMENT

A university environment is not free from physiological and sexual harassment, nor from sexist and homophobic violence. Université Paris-Saclay is very aware of the need to combat sexism and harassment. Numerous prevention initiatives have been implemented, such as awareness-raising videos, information guides and poster campaigns, etc.

Any witnesses or victims of harassment should speak out. A monitoring and listening unit is at your disposal.

### CONTACT

[harcelements@universite-paris-saclay.fr](mailto:harcelements@universite-paris-saclay.fr)

Further information at: [www.universite-paris-saclay.fr/luniversite/nos-projets-identitaires/egalite-diversite-handicap/harcelement-sexuel-osez-en-parler](http://www.universite-paris-saclay.fr/luniversite/nos-projets-identitaires/egalite-diversite-handicap/harcelement-sexuel-osez-en-parler)

# Facilities to create, innovate and learn

## DESIGN SPOT: THE DESIGN CENTRE AT UNIVERSITÉ PARIS-SACLAY

The Design Spot is experimental and innovative. It brings design into the scientific, technological and entrepreneurial fabric of the Paris-Saclay cluster of excellence.

The Design Spot is unique in France and is a design centre for students, staff and entrepreneurs at Université Paris-Saclay. It provides resources and design expertise to bring projects to fruition and helps to better meet the expectations of societies of the future.

**Further information at:**  
<https://www.designspot.fr/>

## FABLABS

Prototyping and design are the two key elements of innovation.

These are put into practice during Fablabs, which are open to all and which provide prototyping facilities and offer advice and support in the design and implementation technological projects.

**Further information at:**  
<https://www.universite-paris-saclay.fr/collaborations/les-fablabs>

## LEARNING CENTER

The Lumen will be the place of reading and of writing from the University of Paris-Saclay. Open to everyone, it will mix student and academic communities, entrepreneurship and citizens around collections, exhibitions, conferences, debates and experiences. Located in the heart of the Moulon plateau campus (Gif-sur-Yvette, Essonne), it will offer spaces, services and content to study, innovate and share knowledge. The Lumen will open its doors in November 2022.

**More info on:**  
<https://www.universite-paris-saclay.fr/lumen>









# THE UNIVERSITY



# Jean Monnet Faculty (Law, Economics and Management)

**The Jean Monnet Faculty (Law, Economics and Management) is located on three sites: Sceaux, Fontenay-aux-Roses and Orsay.**

The Jean Monnet Faculty (Law, Economics and Management) was created in 1968 and has taught courses on Law since its inception and, from 1990, courses in Economics and Management. Located on three sites (Sceaux, Fontenay-aux-Roses and Orsay), it combines a wide variety of training courses with a great vibrancy, whilst also maintaining a human scale. Its courses include excellent and respected Undergraduate Degrees, numerous and unique Master's Degree specialisms, successful language courses and several organisations aimed at the professional integration of its students. It has also introduced selective courses linked to the Law, Economics and Management degrees.

## CONTACTS

See all the courses on offer at [www.jm.universite-paris-saclay.fr](http://www.jm.universite-paris-saclay.fr)

**Dean:** Boris Bernabé  
**Assistant to the Managing Director of Services:** Laure Martineau  
**Administrative registrations**  
[section-administrative.jean-monnet@universite-paris-saclay.fr](mailto:section-administrative.jean-monnet@universite-paris-saclay.fr)

## Registrar Offices

**Law, Economics and Management Degree**  
[licence-droit.jean-monnet@universite-paris-saclay.fr](mailto:licence-droit.jean-monnet@universite-paris-saclay.fr)  
[licence-economie-gestion.jean-monnet@universite-paris-saclay.fr](mailto:licence-economie-gestion.jean-monnet@universite-paris-saclay.fr)

Orsay campus (Degrees 1 and 2): Building 470 - Office D232

Sceaux campus (Degrees 1, 2 and 3): Building B - Office B13

## Masters in Law

[laurence.pacreau@universite-paris-saclay.fr](mailto:laurence.pacreau@universite-paris-saclay.fr)

Building B - Offices B10 and B12

## Master's in Economics and Management

[florence.peyre@universite-paris-saclay.fr](mailto:florence.peyre@universite-paris-saclay.fr)

Building B - Office B002

## Distance learning (EAD)

[ead.jean-monnet@universite-paris-saclay.fr](mailto:ead.jean-monnet@universite-paris-saclay.fr)

Institute for Entrepreneurship and Innovation (IEI) Fontenay-aux-Roses - 1st Floor - Office B3

## The faculty in a few figures

**6000** students, of which 170 are PhD students

**18** Master's tracks and **45** 2nd year Master's courses

**1** 2nd year Master's courses

**6** research centres as well as a federation

of research carried out by the Jean Monnet Faculty.

### **Institute of Legal Studies (IEJ)**

[iej@universite-paris-saclay.fr](mailto:iej@universite-paris-saclay.fr)

Building B – Office B416

### **Doctoral school**

[maryse.chomette@universite-paris-saclay.fr](mailto:maryse.chomette@universite-paris-saclay.fr)

Building A - Office A307

### **Language courses**

[langu.es.jean-monnet@universite-paris-saclay.fr](mailto:langu.es.jean-monnet@universite-paris-saclay.fr)

Building B - Office B211

### **Continuing education / accreditation of prior learning** (see all the continuing education available at [www.jm.universite-paris-saclay.fr](http://www.jm.universite-paris-saclay.fr))

[fc.jean-monnet@universite-paris-saclay.fr](mailto:fc.jean-monnet@universite-paris-saclay.fr)

Institute for Entrepreneurship and Innovation (IEI) Fontenay-aux-Roses - 1st floor - Office B3

### **International relations**

[ri.jean-monnet@universite-paris-saclay.fr](mailto:ri.jean-monnet@universite-paris-saclay.fr)

Building A – 4th floor

### **Information / orientation**

[accueil.oip@universite-paris-saclay.fr](mailto:accueil.oip@universite-paris-saclay.fr)

Building B - Ground floor

### **Professional Integration**

[insertion-pro.jean-monnet@universite-paris-saclay.fr](mailto:insertion-pro.jean-monnet@universite-paris-saclay.fr)

Building B - Office B002

### **Student health**

B012 - [infirmierie.jean-monnet@universite-paris-saclay.fr](mailto:infirmierie.jean-monnet@universite-paris-saclay.fr)

[universite-paris-saclay.fr](http://universite-paris-saclay.fr)

Consultation with doctor, psychologist

### **Disability**

[handicap.jean-monnet@universite-paris-saclay.fr](mailto:handicap.jean-monnet@universite-paris-saclay.fr)

Building A - Office A406

### **Communication and culture**

[communication.jean-monnet@universite-paris-saclay.fr](mailto:communication.jean-monnet@universite-paris-saclay.fr)

Building A – 3rd floor



### **University library**

Sceaux Campus: University Library - Building G

[bib.univ@universite-paris-saclay.fr](mailto:bib.univ@universite-paris-saclay.fr)  
[www.bibliotheques.universite-paris-saclay.fr](http://www.bibliotheques.universite-paris-saclay.fr)

### **Research Library**

Building A - A205

[angelique.malec@universite-paris-saclay.fr](mailto:angelique.malec@universite-paris-saclay.fr)

### **Orsay Campus: University Library**

Building 407

[bib.univ@universite-paris-saclay.fr](mailto:bib.univ@universite-paris-saclay.fr)

### **Sport**

Sceaux Campus: Building G

[didier.michel@universite-paris-saclay.fr](mailto:didier.michel@universite-paris-saclay.fr)

Orsay Campus: Building 225

[suaps@universite-paris-saclay.fr](mailto:suaps@universite-paris-saclay.fr)

# Faculty of Medicine

Spread over three départements in the Paris region (91, 92 and 94), the Faculty of Medicine Paris-Saclay is based around the Paris-Saclay university hospital group and seven hospital sites.

The Faculty located at Kremlin-Bicêtre (94) houses the administrative and technical departments, three lecture halls, 30 classrooms, a simulation teaching platform and a university library. One floor is dedicated to research laboratories. The construction of a building devoted entirely to research is currently underway. The Faculty has two university centres in the Antoine Béclère and Paul Brousse hospitals.

[www.medecine.universite-paris-saclay.fr](http://www.medecine.universite-paris-saclay.fr)

## CONTACTS

**Dean:** Didier Samuel

**Assistant to the Managing Director of**

**Services:** Feryel Karroucha



## Tuition

PLEASE NOTE: teaching in the first year is carried out on the Orsay campus (Faculty of Science) and the Châtenay-Malabry campus (Faculty of Pharmacy).

## Hours of operation

See the tuition times for the Faculty of Science in Orsay - +33 (0)1 69 15 54 31 and the Faculty of Pharmacy - +33 (0)1 46 83 53 42

## The faculty in a few figures

**8600** students: 5,200 students in initial training or Continuing Education

**3 400** students in paramedical training  
(nursing, kinesiotherapy/physiotherapy, x-ray technicians, podiatry)

**24** research units

**4** master's

**5** research units

**108** University Diplomas



Medical studies take place from the 2nd year on the Kremlin-Bicêtre campus (Faculty of Medicine).

## Department of Studies and Student Life

### DFGSM2/DFGSM3

tel.: +33 (0)1 49 59 66 20 / 66 35  
[promo-dfgsm2.medecine@universite-paris-saclay.fr](mailto:promo-dfgsm2.medecine@universite-paris-saclay.fr)  
[promo-dfgsm3.medecine@universite-paris-saclay.fr](mailto:promo-dfgsm3.medecine@universite-paris-saclay.fr)

### DFASM2/DFASM1-DFASM3

tel.: +33 (0)1 49 59 66 16 / 66 22  
[promo-dfasm2.medecine@universite-paris-saclay.fr](mailto:promo-dfasm2.medecine@universite-paris-saclay.fr)  
[promo-dfasm1.medecine@universite-paris-saclay.fr](mailto:promo-dfasm1.medecine@universite-paris-saclay.fr)  
[promo-dfasm3.medecine@universite-paris-saclay.fr](mailto:promo-dfasm3.medecine@universite-paris-saclay.fr)

### OFFICE FOR THE 3RD CYCLE

tel.: +33(0)1 49 59 66 13 / 66 25 / 66 27  
[des.medecine@universite-paris-saclay.fr](mailto:des.medecine@universite-paris-saclay.fr)  
[these.medecine@universite-paris-saclay.fr](mailto:these.medecine@universite-paris-saclay.fr)

### MASTER'S OFFICE

tel.: +33 (0)1 49 59 66 23 / 66 49 / 67 89 / 67 99  
[master-bio-sante.medecine@universite-paris-saclay.fr](mailto:master-bio-sante.medecine@universite-paris-saclay.fr)  
[master-sante-publique.medecine@universite-paris-saclay.fr](mailto:master-sante-publique.medecine@universite-paris-saclay.fr)

### Student life

Tel: +33 (0)01 49 59 66 07

### Department of General Medicine

Director: Laurent Rigal,  
+33(0)1 49 59 67 27  
[departement-mg.medecine@universite-paris-saclay.fr](mailto:departement-mg.medecine@universite-paris-saclay.fr)

### Department of Ethics Research:

Director: Emmanuel Hirsch,  
+33(0)1 44 84 17 57  
[espace.ethique@sls.aphp.fr](mailto:espace.ethique@sls.aphp.fr)

### University Department of Training in Nursing Care (DUFSI):

Director: Cécile Goujard  
+33 (0)1 49 59 66 02  
[dufsi.medecine@universite-paris-saclay.fr](mailto:dufsi.medecine@universite-paris-saclay.fr)

### University Department of Training in Kinesiotherapy/ Physiotherapy (DUFKP):

Director: Olivier Gagey  
+33 (0)01 49 59 66 76  
[dufkp.medecine@universite-paris-saclay.fr](mailto:dufkp.medecine@universite-paris-saclay.fr)

### Research:

Research office +33 (0)1 49 59 66 00  
[recherche-faculte.medecine@universite-paris-saclay.fr](mailto:recherche-faculte.medecine@universite-paris-saclay.fr)

### Department for Continuing Education / Accreditation of Prior Learning

Directors: Philippe Labrune and Laurent Rigal  
+33 (0)1 49 59 66 (15) or (19)  
[fc.medecine@universite-paris-saclay.fr](mailto:fc.medecine@universite-paris-saclay.fr)

### Communication

Contact: [communication.medecine@universite-paris-saclay.fr](mailto:communication.medecine@universite-paris-saclay.fr)  
Tel: +33 (0)01 49 59 67 55

### Student health

Level 4 – office 459 – 461  
+33 (0)01 49 59 67 62  
Nurse Wednesday and Thursday, doctor and psychologist by appointment  
[infirmierie.medecine@universite-paris-saclay.fr](mailto:infirmierie.medecine@universite-paris-saclay.fr)

### Disability:

Prevention and Disability Department  
Contact: Simon Patigny,  
+33(0)1 49 59 66 07,  
[simon.patigny@universite-paris-saclay.fr](mailto:simon.patigny@universite-paris-saclay.fr)

### International and European relations

+33 (0)1 49 59 67 38  
[vie-etudiante.medecine@universite-paris-saclay.fr](mailto:vie-etudiante.medecine@universite-paris-saclay.fr)

### Library:

University library, level 3: See the opening times and services available: <https://www.bibliotheques.universite-paris-saclay.fr/>  
Manager:  
[vincent.chekib@universite-paris-saclay.fr](mailto:vincent.chekib@universite-paris-saclay.fr)  
+33 (0)01 49 59 67 80  
[bib.univ@universite-paris-saclay.fr](mailto:bib.univ@universite-paris-saclay.fr)

# Faculty of Pharmacy

**A Faculty characterized by a extensive choice of training courses and a prominent place given to the research.**

The Faculty of Pharmacy offers a academic excellence pharmaceuticals and also offers a wide range of training, including several courses of degrees, masters and a doctoral school. It is characterized by the size of the surface dedicated to its research activity in the field of therapeutic innovation.

The Faculty of Pharmacy is also coordinating component of the Graduate School «Health and Drug Sciences» (GS HeadS) which coordinates the forces research and

training in field of therapeutic innovation, medicine and health products patient benefit.

It covers the entire chain of health products and is developing a transdisciplinary health research, bringing together the teams whose activities relate to the pharmaceutical sciences, medicine, medical device, diagnosis, pathophysiology, translational medicine and research clinical.

[www.pharmacie.universite-paris-saclay.fr](http://www.pharmacie.universite-paris-saclay.fr)



## The faculty in a few figures

**3500** students

Nearly **300** PhD students

**80,000** m<sup>2</sup> dedicated to research and education

**21** Masters courses

**12** research laboratories

**1** privileged access to the LUMEN (Learning Center)

**1** restaurant area with 250 seats

## CONTACTS

**Dean:** Marc Pallardy  
**Assistant to the Managing Director of Services:** Sylvie Etiemble

### Schooling Pole Heart

Opening to the public  
9:30 a.m. to 11:00 a.m. and 1:30 p.m. to 4:00 p.m. – every day – closed on Wednesday rest of the year.  
Responsible : Samuel Costantin  
01 80 00 60 31  
[samuel.costantin@universite-paris-saclay.fr](mailto:samuel.costantin@universite-paris-saclay.fr)

### Internship/professional integration

Contact the education department Pole Heart

### Continuing education/validation of skills

Coeur de Pôle – offices 1117 and 1116  
Open Monday to Friday 9:30 a.m. at 11:30 a.m. and from 1:30 p.m. to 4:30 p.m.  
[fc.pharmacie@universite-paris-saclay.fr](mailto:fc.pharmacie@universite-paris-saclay.fr)

**Communication Manager:** Lea Remaud  
Heart of Pole – office 1126  
[communication.pharmacie@universite-paris-saclay.fr](mailto:communication.pharmacie@universite-paris-saclay.fr)

**Student Health** – SSU Infirmary  
Build. A – lower ground floor (facing building B) PUIO Building (Building 640)  
Ground floor, D wing, office D109  
Nurses: Marie-Paule Cottin and Nathalie Wacongne  
SSU doctor: Dr Pierre Gaudebout  
Tel: 01 69 15 46 64 or 01 69 15 46 66  
[infirmerie.pharmacie@universite-paris-saclay.fr](mailto:infirmerie.pharmacie@universite-paris-saclay.fr)  
Open Monday to Friday from 9 a.m. to 12:30 p.m. and 1:30 p.m. to 5 p.m.

### Dietician:

free consultation on the 2nd and 4th Wednesday of the month at the premises of the infirmary. Appointment booking by email (in specifying your place of study) to: [julie.naves@universite-paris-saclay.fr](mailto:julie.naves@universite-paris-saclay.fr)

### Psychologist:

free consultation every Thursday from

months in the premises of the infirmary. Socket appointment by email (specifying your location of study) to: [valerie.choukroun@universite-paris-saclay.fr](mailto:valerie.choukroun@universite-paris-saclay.fr)

### International relationships

Build. A – Schooling Heart of Division and/or Office Open Monday to Friday from 9:30 a.m. to 11 a.m. and 1:30 p.m. to 4 p.m. Closed Wednesday  
Coordination:  
[dorine.bonte@universite-paris-saclay.fr](mailto:dorine.bonte@universite-paris-saclay.fr)  
[emeline.philippe@universite-paris-saclay.fr](mailto:emeline.philippe@universite-paris-saclay.fr) (schooling)

### Library

The University Library (BU) of the UFR Pharmacy will move to Lumen, new University Learning Center, in winter 2023. From September 2022, the CentraleSupélec library (located at within the Eiffel building) and the BU Orsay (bldg.407) will welcome you close to your teaching places.  
The essential books, as well as those necessary for the preparation of the internship, are available from the start of the school year CentraleSupélec library. To consult the updated timetables from the library, go to:  
<https://www.centralesupelec.fr/fr/bibliotheques>  
Contact: [bib.univ@universite-paris-saclay.fr](mailto:bib.univ@universite-paris-saclay.fr)

### Sport

Coordination SUAPS:  
[service.suaps@universite-paris-saclay.fr](mailto:service.suaps@universite-paris-saclay.fr)  
Pharmacy Sports Association - ASP:  
[aspharmap11@hotmail.com](mailto:aspharmap11@hotmail.com)

## Faculty of Science

The Faculty of Science, Orsay is a long-standing member university of Université Paris-Saclay. It extends over a university campus of more than 200 hectares, part of which is under the jurisdiction of the municipalities of Orsay, Bures-sur-Yvette and Gif-sur-Yvette. The education and research covers disciplines as varied as Mathematics, Information Technology, Physics, Chemistry, Biology, Earth and Space Sciences and the Study of Science and Technology.

The Faculty provides education from the level of Undergraduate Degrees to PhDs, including traditional courses and work-study programmes, vocational courses and joint degrees. Its internationally renowned research is closely linked to key current and future scientific issues.

It has also developed a wide-ranging, vibrant and voluntary policy to create links between science and society through numerous initiatives aimed at schools and the general public.

**6 TEACHING AND RESEARCH DEPARTMENTS, A RESEARCH AND TEACHING CENTRE FOR THE HISTORY AND DISSEMINATION OF SCIENCE, A LANGUAGE TEACHING DEPARTMENT, A CONTINUING EDUCATION DEPARTMENT, A TEACHER TRAINING DEPARTMENT.**

[www.sciences.universite-paris-saclay.fr](http://www.sciences.universite-paris-saclay.fr)



## The faculty in a few figures

**9 600** students

**1 600** PhD students

Participation with **12** Paris-Saclay Doctoral Schools

**40** laboratories

**800** academic staff and **600** administrative, social and health engineers (IASS)

## CONTACTS

**Dean:** Denis Merlet

**Assistant to the Managing Director of**

**Services:** Laurence Mouchard

### **Undergraduate Degree-Master's Tuition**

Building 336 – offices 003 & 006 Manager: Philippe Martin

Open Monday to Friday, 9.00 am to 5.00

pm [scolarite-licencesmasters.sciences@universite-paris-saclay.fr](mailto:scolarite-licencesmasters.sciences@universite-paris-saclay.fr)

### **PASS Tuition**

Building 332 – 1st floor – offices 166-168

Manager: [Florence Pheulpin](mailto:Florence.Pheulpin@universite-paris-saclay.fr)

[pheulpin@universite-paris-saclay.fr](mailto:pheulpin@universite-paris-saclay.fr)

+33 (0)1 69 15 43 70 / 01 69 15 54 31

Open Monday to Friday 9.00 am to 12.30 pm and 1.30 pm to 5.00 pm.

**Doctoral School Tuition Manager:** Nathalie

Bourdieu JIANG ENS Paris-Saclay

4, avenue des sciences 91190 Gif sur Yvette

[scolarite-doctorat.sciences@universite-paris-saclay.fr](mailto:scolarite-doctorat.sciences@universite-paris-saclay.fr)

+33(0)1 81 87 50 61 / 62 63

### **Information/orientation/work placements/professional integration**

Information about work placements and job offers can be obtained from each department's Registrar's Office.

### **Work placement/Student life**

Advisor: Education Department

[scolarite-licencesmasters.sciences@universite-paris-saclay.fr](mailto:scolarite-licencesmasters.sciences@universite-paris-saclay.fr)

### **Continuing education:**

Manager: +33 (0)01 69 15 37 00

### **Accreditation of prior learning**

Building 490

[vae.sciences@universite-paris-saclay.fr](mailto:vae.sciences@universite-paris-saclay.fr)

+33 (0)01 69 15 36 03

### **Communication**

Manager: Anaïs Vergnolle communication.

[sciences@universite-paris-saclay.fr](mailto:sciences@universite-paris-saclay.fr)

+33 (0)01 69 15 32 53

### **Student health**

Building 336 - Ground Floor - B15

Director: Dr Cécile Hallier-Barbe

[sante-etudiants@universite-paris-saclay.fr](mailto:sante-etudiants@universite-paris-saclay.fr)

+33 (0)1 69 15 65 39

Open Monday to Friday 8.30 am to midday and 1:00 pm to 5:00 pm.

Nurse: Catherine Azulay

Consultation by appointment with a

Psychologist (Thursdays, Fridays), a

dietician (every other Tuesday), smoking cessation advisor (Wednesday)

### **Disability**

Contact: Emilie Amzallag Disability and

Studies Department:

Nathalie Chemise, Catherine Gaigniere and

Sébastien Guilabert +33(0)1 69 15 61 59

[handicap.deve@universite-paris-saclay.fr](mailto:handicap.deve@universite-paris-saclay.fr)

Psychologist: Thursdays

Dietician: (every other Tuesday)

### **International relations**

Catherine Dreux, Philippe Berdagué, Pedro

de Oliveira - Building. 336 [pri.sciences@](mailto:pri.sciences@universite-paris-saclay.fr)

[universite-paris-saclay.fr](mailto:universite-paris-saclay.fr)

### **Corporate and apprenticeship relations**

Apprenticeship training:

Sylviane Liotenberg

Apprenticeship tax: Jérôme Leygnier

Partnerships: Alexandre Dazzi

[taxe-apprentissage.sciences@universite-paris-saclay.fr](mailto:taxe-apprentissage.sciences@universite-paris-saclay.fr)

### **Library**

Library, Building 407

See the opening times and services

available: [https://www.bibliotheques.](https://www.bibliotheques.universite-paris-saclay.fr)

[universite-paris-saclay.fr](https://www.bibliotheques.universite-paris-saclay.fr)

Manager: Nathalie De Joie

+33 (0)1 69 15 69 94

[bib.univ@universite-paris-saclay.fr](mailto:bib.univ@universite-paris-saclay.fr)



# Faculty of Sports Science

## High-level research work, successful professional integration.

The Faculty of Sports Science at Université Paris-Saclay has the best professional integration rate of all French universities. Science and Technology of Physical Activity and Sport (STAPS) is among one of the most attractive disciplines in French universities today and involves a high level of research. All levels of training (Undergraduate, Master's, PhD) are fully in line with the range of varied and attractive fields of activity which today's job market requires.

[www.faculte-sciences-sport.universite-paris-saclay.fr](http://www.faculte-sciences-sport.universite-paris-saclay.fr)

### CONTACTS

**Dean:** François Cottin

**Assistant to the Managing Director of**

**Services:** Nathalie Jacob-Righini

### Tuition

Head of Education and Professional Integration: Mascia Reato [mascia.reato@universite-paris-saclay.fr](mailto:mascia.reato@universite-paris-saclay.fr) +33 (0)1 69 15 31 21 Building. 335 - Orsay campus

### Degree 1 and Parcoursup

[portail.staps@universite-paris-saclay.fr](mailto:portail.staps@universite-paris-saclay.fr)

Evelyne Lavenant +33 (0)1 69 15 74 20

Nadine Clémente +33 (0)1 69 15 65 38

### Degree 2 and professional project L1

[u-psud.fr](http://u-psud.fr) par [universite-paris-saclay.fr](http://universite-paris-saclay.fr)

Social assistance advisor:

Patricia Durand, +33(0)1 69 15 43 04

### 3rd year degree

[licence3.staps@universite-paris-saclay.fr](mailto:licence3.staps@universite-paris-saclay.fr)

Hélène Ballongue +33 (0)1 69 15 65 41

### Joint Honours Degree and Fitness

#### Professions Vocational Degree

[licencedd.staps@universite-paris-saclay.fr](mailto:licencedd.staps@universite-paris-saclay.fr)

Marianne Baumard +33 (0)1 69 15 62 36

### Doctoral school

Marie-Pierre Richoux / +33 (0)1 69 15 61 98

[marie-pierre.richoux@universite-paris-saclay.fr](mailto:marie-pierre.richoux@universite-paris-saclay.fr)

## The faculty in a few figures

Over **1600** students

**8** Master's degrees

**4** STAPS degrees and **1** vocational degree delivered in initial training and apprenticeship

**1** Joint Degree

**1** 'Sports, Motor and Human Movement Sciences' Doctoral School

**4** varied and interesting fields of study:

- Animation, tourism and sports leisure professions (associations, leisure centres, sports leisure, etc.)
- Communication and sports marketing professions (communications officer: Federations, sports companies, marketing managers)
- Teaching and research professions (physical education teacher, school teacher, lecturer, etc.)
- Professions linked to health and well-being (fitness, ageing, obesity, disability, etc.)



## Master's Degree in Sports Management and APA-S

Caroline Forcellini +33(0)1 69 15 43 02  
[masters-staps.mmpv@universite-paris-saclay](mailto:masters-staps.mmpv@universite-paris-saclay)

## MEEF and agrégation Diplomas Registrar

Cécile Mauceri / +33 (0)1 69 15 62 87  
[meef.staps@universite-paris-saclay.fr](mailto:meef.staps@universite-paris-saclay.fr)

## Transfers, grants

Cécile Loquin / +33 (0)1 69 15 62 88  
[inscriptions.staps@universite-paris-saclay.fr](mailto:inscriptions.staps@universite-paris-saclay.fr)

## Examinations

Marine Petrilli / +33 (0)1 69 15 31 20  
[examens.staps@universite-paris-saclay.fr](mailto:examens.staps@universite-paris-saclay.fr)

## GS EFE administrative manager Laure Siery

+33 (0)1 69 15 44 33  
[gs.education@universite-paris-saclay.fr](mailto:gs.education@universite-paris-saclay.fr)

## ISMH and M2 PCMPS / equivalents

**Master's degree**  
Marianne Baumard / +33 (0)1 69 15 62 36  
[masters-staps.pibh@universite-paris-saclay.fr](mailto:masters-staps.pibh@universite-paris-saclay.fr)

## Diploma applications

Marianne Baumard / +33 (0)1 69 15 62 36  
[diplomes.staps@universite-paris-saclay.fr](mailto:diplomes.staps@universite-paris-saclay.fr)  
FC, VAE-VAA, TA, DU, Quality  
Norine Coussot / +33 (0)1 69 15 30 79  
[fc.staps@universite-paris-saclay.fr](mailto:fc.staps@universite-paris-saclay.fr)

## Evaluation of courses

Yves Calvez / +33 (0)1 69 15 39 36 yves.calvez@universite-paris-saclay.fr  
Souphiane Jender  
[souphiane.jender@universite-paris-saclay.fr](mailto:souphiane.jender@universite-paris-saclay.fr)

## Continuing education:

Director: Alain Hamaoui / +33 (0)1 69 15 39 36  
[fc.staps@universite-paris-saclay.fr](mailto:fc.staps@universite-paris-saclay.fr)

## Accreditation of Professional and Personal Experience, Accreditation of Prior Learning

Manager: Alain Hamaoui / +33 (0)1 69 15 39 36  
[fc.staps@universite-paris-saclay.fr](mailto:fc.staps@universite-paris-saclay.fr)



## Communication

Contact: Gaëlle Giraudier  
+33 (0)1 69 15 35 75  
[communication.staps@universite-paris-saclay.fr](mailto:communication.staps@universite-paris-saclay.fr)

## Student health

Director: Dr Cécile Hallier Barbe medecine.  
[preventive@universite-paris-saclay.fr](mailto:preventive@universite-paris-saclay.fr) / +33 (0)1 69 15 65 39  
Building. 336 - Orsay campus

## Disability

Disability contact lecturer:  
Education department: Marine Petrilli  
[handicap.staps@universite-paris-saclay.fr](mailto:handicap.staps@universite-paris-saclay.fr)  
+33 (0)1 69 15 31 20

## International relations

Manager: Christophe Hautbois  
[international.staps@universite-paris-saclay.fr](mailto:international.staps@universite-paris-saclay.fr)

## Visa and administrative procedures contact and relations secretary

international: Cécile Mauceri  
[cecile.mauceri@universite-paris-saclay.fr](mailto:cecile.mauceri@universite-paris-saclay.fr)

## Library

Library, Building 407  
See the opening times and services available: <https://www.bibliotheques.universite-paris-saclay.fr>  
Manager: Nathalie De Joie +33 (0)1 69 15 69 94  
[bib.univ@universite-paris-saclay.fr](mailto:bib.univ@universite-paris-saclay.fr)

**University equestrian centre** Manager: Alain Griffond  
[centre.equestre@universite-paris-saclay.fr](mailto:centre.equestre@universite-paris-saclay.fr)  
Building. 331

# Cachan Technical Institute (IUT)

Nearly 1,000 students taught each year. The IUT educates nearly 1,000 students (B.U.T, vocational degrees and DU) in the two technological fields of Electrical Engineering & Industrial Computing and Mechanical and Production Engineering.

These courses prepare students for various jobs as senior technicians or future engineers in the aeronautical, automotive, transport, renewable energy, technical management of buildings, home automation, telecommunications, biomedical instrumentation, biomechanics, robotics, industrial trade and audiovisual technology sectors.

[www.iut-cachan.universite-paris-saclay.fr](http://www.iut-cachan.universite-paris-saclay.fr)

## CONTACTS

**IUT Director:** Francisco De Oliveira Alves  
**Assistant to the Managing Director of Services:** Elvire Petit-Roger

**Deputy Director FCA-REE:**  
Nicolas Liebeaux  
**Education Deputy Director**  
Johan Moulin

**Department GEII-1**  
Head of Department:  
Véronique Tibayrenc  
+33 (0)1 41 24 11 30

**Department GEII-2**  
Head of Department: Yves Guinand  
+33 (0)1 41 24 11 37

**GMP Department**  
Head of Department: Eric Fekete  
+33 (0)1 41 24 11 70

Please contact each department's Registrar's Office for information on work placements and job offers, timetables and absences.

**Department of Studies and Student Life**  
Manager: Christelle Taybi  
[scolarite.iut-cachan@universite-paris-saclay.fr](mailto:scolarite.iut-cachan@universite-paris-saclay.fr)  
+33 (0)1 41 24 11 12  
Department open 8.30 am to midday and 1.30 pm to 5.00 pm

## The IUT in a few figures

**1000** students, of which 25% are apprentices

**2** B.U.T FI, FA, FC specialisms

**9** vocational degrees through apprenticeship

**1** Innov'Lab

**3** educational and technological platforms



**Continuing education, apprenticeships, corporate and entrepreneur relations, accreditation of experience Deputy**

director FCA-REE

Nicolas Liebeaux

Registrar: [fc.iut-cachan@universite-paris-saclay.fr](mailto:fc.iut-cachan@universite-paris-saclay.fr) and [vae.iut-cachan@universite-paris-saclay.fr](mailto:vae.iut-cachan@universite-paris-saclay.fr) / +33 (0)1 41 24 11 55

**Communication**

Auberi André

[communication.iut-cachan@universite-paris-saclay.fr](mailto:communication.iut-cachan@universite-paris-saclay.fr) / +33 (0)1 41 24 11 27

**Student health**

Building B - Ground floor

Office 012,

Nurse: Anne Tubiana,

Building B, office 012 - +33 (0)1 41 24 11

09 [infirmierie.iut-cachan@universite-paris-saclay.fr](mailto:infirmierie.iut-cachan@universite-paris-saclay.fr)

Consultation by appointment with a psychologist and doctor

**Disability**

Disability contact lecturer:

Olivier Clamens

Nursing service:

Anne Tubiana, Building B Ground floor

[handicap.iut-cachan@universite-paris-saclay.fr](mailto:handicap.iut-cachan@universite-paris-saclay.fr)

+33 (0)01 41 24 11 09

**International relations**

Contact: Pascale Vareille,

[ri.iut-cachan@universite-paris-saclay.fr](mailto:ri.iut-cachan@universite-paris-saclay.fr)

+33 (0)1 41 24 11 31

**Library**

Building C, 1st floor

+33 (0)1 41 24 11 14

Open: Monday to Friday 8.30 am to 7.00 pm

[bibliotheque.iut-cachan@u-psud.fr](mailto:bibliotheque.iut-cachan@u-psud.fr)

**Sport**

SUAPS coordinator: Pierre Blanc pierre.

[blanc@universite-paris-saclay.fr](mailto:blanc@universite-paris-saclay.fr)

+33 (0)1 41 24 11 96

# Orsay Technical Institute (IUT)

IUT Orsay is located on the Plateau de Moulon in the heart of the Paris-Saclay campus. It is a leading centre of education in the secondary sector.

IUT Orsay has cutting-edge technological platforms and enjoys close relations with companies as a result of more than 50 years of experience with industrial partnerships (work placements - work-study contracts).

[www.iut-orsay.universite-paris-saclay.fr](http://www.iut-orsay.universite-paris-saclay.fr)



## The IUT in a few figures

**1200** students in initial studies, work-placement programmes (200 apprentices) and continuing education

**3** teaching departments: Chemistry, Information Technology, Physical measurements

**7** vocational degrees

**2** research laboratories: AMETIS and LETIAM

**3** B.U.T specialisms (Chemistry, Information Technology, Physical measurements)

## CONTACTS

**Director:** Christophe Colbeau-Justin  
**Delegate of the Director General of Services:** Marianne Faily

### **Department of Studies and Business Relations**

Manager: Yamina Acef

### **Tuition**

[scolarite.iut-orsay@universite-paris-saclay.fr](mailto:scolarite.iut-orsay@universite-paris-saclay.fr)

+33 (0)1 69 33 60 27 / 60 24

Building E605 - Ground floor

Open Monday to Friday 8:30 am to 12:30 and 1.30 pm to 5.00 pm.

### **Work placement/professional integration**

Information about work placements and job offers can be obtained from each department's Registrar's Office.

### **Continuing education / Accreditation of prior learning / apprenticeships**

[fc.iut-orsay@universite-paris-saclay.fr](mailto:fc.iut-orsay@universite-paris-saclay.fr)

+33 (0)01 69 33 61 37

[vae.iut-orsay@universite-paris-saclay.fr](mailto:vae.iut-orsay@universite-paris-saclay.fr)

+33 (0)01 69 33 60 20

### **Corporate relations**

[relations-entreprises.iut-orsay@u-psud.fr](mailto:relations-entreprises.iut-orsay@u-psud.fr)

### **Communication**

Manager of Communication:

Homa Hassani [homa.hassani@universite-paris-saclay.fr](mailto:homa.hassani@universite-paris-saclay.fr)

+33 (0)1 69 33 60 61

### **Student health**

Nurse: Caroline Gavard

+33 (0)1 69 33 60 28

Building E605, office 005

Sick bay open every day except

Thursday afternoon. Free consultations with a psychologist, dietician and smoking cessation advisor by appointment.

### **Disability**

Disability contact lecturer:

Hélène Maynard Disability Support:

Caroline Gavard

Nursing service:

Ground floor (Office 005)

Building E605

+33 (0)01 69 33 60 28

[handicap.iut-orsay@universite-paris-saclay.fr](mailto:handicap.iut-orsay@universite-paris-saclay.fr)

### **International relations Manager:**

Frédérique Banse relations-

[internationales.iut-orsay@universite-paris-saclay.fr](mailto:internationales.iut-orsay@universite-paris-saclay.fr)

### **Library**

+33 (0)01 69 33 60 17

Building D604 1st floor

Open Monday to Friday from 9.45 am to 5.00 pm.

### **Sport**

Jean- François Allirand, professor of sport, arranges a meet up every Wednesday

1.00 am to 2.00 pm.

+33 (0)01 69 15 79 32



# Sceaux Technical Institute (IUT)

This is a leading centre of education in the tertiary sector.

Upon completion of the Baccalauréat, the education at IUT Sceaux prepares students for a wide range of diplomas in business and marketing, management, accounting and finance, human resources and entrepreneurship.

[www.iut-sceaux.universite-paris-saclay.fr](http://www.iut-sceaux.universite-paris-saclay.fr)

## The IUT in a few figures

**1 600** students

### **2 B.U.T specialisms:**

- B.U.T. Business and Administration Management (GEA) Course: - Accounting and financial management / Human resources management and monitoring / Management, entrepreneurship and business management / Management control and performance management
- B.U.T. TC (Marketing Techniques) Course: - Digital marketing, e-business and entrepreneurship / International business: purchase and sales / Marketing and management of point of sale / Business development and management of customer relations / Branding and event management

### **1 License**

- L3 Eco-Management

### **2 Master's in apprenticeship**

(in partnership with the Jean Monnet Faculty)

- Master's in Production Logistics Purchasing Management / International Purchasing Journey
- Master's in Intangible Capital Management (subject to opening)
- L3 Economics-Management course Accounting-Control (in partnership with the Jean Monnet Faculty)

### **2 University Diplomas (DU):**

- DU ECIC (Circular Economy and Collective Intelligence)
- DU FLE (French as a Foreign Language)

### **7 Vocational Degrees**

- Entrepreneurship and Management of Organisations
- International Trade in Luxury Goods
- HR development tools
- Assistant marketing
- Management Control
- Sales and Management in Optics and Eyewear
- Account management, marketing of financial products and services





## CONTACTS

**Director:** Virginie Demulier  
**Delegate of the Director General of Service:** Magali Bruno

### Tuition

Manager: Delphine Arbentz  
+33 (0)1 40 91 24 11 - office 311

### Communication / student life / Manager of Communication: Eva Olah Student Life

Manager:  
Muriel de Fleurac  
Entrepreneurship and Business Creation  
Coordinator: Nathalie Clarete

### Continuing education/Accreditation of prior learning

Administrative Manager: Cynthia Anthony  
+33 (0)1 40 91 24 20

### Accreditation of prior learning (IUT Sceaux campus)

Head of Education:  
Sylvie De Figueiredo +33 (0)1 40 91 24 06

### Apprenticeship

Administrative Manager: Cynthia Anthony  
+33 (0)1 40 91 24 20

### Student health

Doctors, nurses and psychologists,  
office 341 – 01 40 91 24 01  
[infirmierie.iut-sceaux@universite-paris-saclay.fr](mailto:infirmierie.iut-sceaux@universite-paris-saclay.fr)

### Social service (CROUS)

By appointment - IUT or Jean Monnet  
Faculty - +33 (0)1 69 15 70 64

### Disability

Disability contact lecturer: Alberto  
Guinda-Villanueva

### Disability administrative contact person:

Delphine Arbentz,  
+33 (0)1 40 91 24 11 -  
Office 311  
[handicap.iut-sceaux@universite-paris-saclay.fr](mailto:handicap.iut-sceaux@universite-paris-saclay.fr)

### International relations Administrative

manager: Léa Rivera [lea.rivera@universite-paris-saclay.fr](mailto:lea.rivera@universite-paris-saclay.fr)  
+33 (0)01 40 91 24 35

### Library

Library manager:  
[Christophe Serra christophe.serra@universite-paris-saclay.fr](mailto:christophe.serra@universite-paris-saclay.fr)  
+33 (0)1 40 91 24 66  
Open Monday to Friday 9.00 am to  
6.00 pm.

### Sport

SUAPS coordinator: Brian Acard +33 (0)1  
40 91 24 17

# Polytech Paris-Saclay

**Polytech Paris-Saclay is the University's internal engineering school. It continues an already long history of over 30 years of engineering education at Université Paris-Saclay.**

Since 2010, the school has joined the Polytech network. Polytech Paris-Saclay draws its strength from its dual background involving both the University and strong industrial connections. The school is located in buildings 620 and 640 on the Saclay plateau, in the heart of a key technological hub which includes several public and private research centres. One section of the teaching takes place at IUT Cachan.

[www.polytech.universite-paris-saclay.fr](http://www.polytech.universite-paris-saclay.fr)

## CONTACTS

**Director:** Emmanuel Seignez  
Assistant to the Managing Director of Services: Lydie Eyrignoux

### Reception

Maison de l'ingénieur - building. 620  
Standard: +33 (0)01 69 33 86 00

### Admissions Department

[recrut-etd.polytech@universite-paris-saclay.fr](mailto:recrut-etd.polytech@universite-paris-saclay.fr) / Maison de l'ingénieur - building 620 01 69 33 86 00

### Tuition

[scolarite.polytech@universite-paris-saclay.fr](mailto:scolarite.polytech@universite-paris-saclay.fr) / Maison de l'ingénieur - building 620 01 69 33 86 50



## Polytech Paris-Saclay en quelques chiffres

**820** élèves

**180** diplômés par an

**20** laboratoires / équipes de recherche associés

**4** spécialités techniques : Electronique et Systèmes Robotisés ; Informatique ;  
Matériaux : Mécanique et Énergie ; Photonique et Systèmes Optroniques

### **Preparatory Cycle**

PeiP - Polytech engineering school pathways  
(years bac +1 and bac +2) Registrar's  
Office contact: [secretariat-peip.polytech@  
universite-paris-saclay.fr](mailto:secretariat-peip.polytech@universite-paris-saclay.fr)  
PUIO - building 640 01 69 33 86 18

### **Engineering cycle - student program**

me Contacts Registrar Offices : [secretariat-  
etd.polytech@universite-paris-saclay.fr](mailto:secretariat-etd.polytech@universite-paris-saclay.fr)  
Maison de l'ingénieur - building. 620  
+33 (0)01 69 33 86 10

### **Engineering cycle - work-study placement**

**Contact Registrar's Office :** [secretariat-app.  
polytech@universite-paris-saclay.fr](mailto:secretariat-app.polytech@universite-paris-saclay.fr)  
Maison de l'ingénieur - building. 620  
+33 (0)01 69 33 86 22

### **Continuing education/Accreditation of prior learning**

[secretariat-ftlv.polytech@universite-paris-  
saclay.fr](mailto:secretariat-ftlv.polytech@universite-paris-saclay.fr)  
Maison de l'ingénieur - building. 620  
+33 (0)01 69 33 86 30  
Specialisms contacts

### **Electronics and robotic systems specialism**

[elec.polytech@universite-paris-saclay.fr](mailto:elec.polytech@universite-paris-saclay.fr)  
Maison de l'ingénieur - building 620  
+33 (0)01 69 33 86 00

### **Information Technology specialism**

[info.polytech@universite-paris-saclay.fr](mailto:info.polytech@universite-paris-saclay.fr)  
Maison de l'ingénieur - building 620  
+33 (0)01 69 33 86 00

### **Materials Specialism Mechanics and Energy**

[mtx.polytech@universite-paris-saclay.fr](mailto:mtx.polytech@universite-paris-saclay.fr)  
Maison de l'ingénieur - building. 620  
+33 (0)01 69 33 86 00

### **Photonics and optronic systems specialism**

[phot.polytech@universite-paris-saclay.fr](mailto:phot.polytech@universite-paris-saclay.fr)  
Maison de l'ingénieur - building. 620  
+33 (0)01 69 33 86 00

### **Work placement**

[office.polytech@universite-paris-saclay.fr](mailto:office.polytech@universite-paris-saclay.fr)  
Maison de l'ingénieur  
building 620  
+33 (0)01 69 33 86 11

### **Corporate Relations**

[info.polytech@universite-paris-saclay.fr](mailto:info.polytech@universite-paris-saclay.fr)  
Maison de l'ingénieur - building 620  
01 69 33 86 05

### **Communication**

[communication.polytech@universite-paris-  
saclay.fr](mailto:communication.polytech@universite-paris-saclay.fr)  
Maison de l'ingénieur - building. 620  
+33 (0)01 69 33 86 21

### **Student health**

Consultation with a physiologist, dietician or  
smoking cessation advisor by appointment.  
Orsay campus building 336

### **Ground floor**

+33 (0)01 69 15 65 39  
[medecine.preventive@universite-paris-  
saclay.fr](mailto:medecine.preventive@universite-paris-saclay.fr)  
or sick bay in IUT Orsay  
Building E605,  
office 005  
Nurse: Caroline Gavard  
+33 (0)1 69 33 60 28

### **Listening and support service**

[aide.polytech@universite-paris-saclay.fr](mailto:aide.polytech@universite-paris-saclay.fr) and  
[ecoute.polytech@universite-paris-  
saclay.fr](mailto:ecoute.polytech@universite-paris-saclay.fr)  
Maison de l'ingénieur - building. 620  
+33 (0)01 69 33 86 53

### **Student Life Department**

[vie-etudiante.polytech@universite-paris-  
saclay.fr](mailto:vie-etudiante.polytech@universite-paris-saclay.fr)  
Maison de l'ingénieur - building. 620  
+33 (0)01 69 33 86 53

### **International relations**

[international.polytech@universite-paris-  
saclay.fr](mailto:international.polytech@universite-paris-saclay.fr)  
Maison de l'ingénieur - building. 620  
+33 (0)01 69 33 86 53

### **Department**

[direction.polytech@universite-paris-  
saclay.fr](mailto:direction.polytech@universite-paris-saclay.fr)  
Maison de l'ingénieur - building. 620  
+33 (0)01 69 33 86 30

# CentraleSupélec

A founding member of Université Paris-Saclay, **CentraleSupélec** is one of the two largest general engineering schools in France and in the world.

**CentraleSupélec provides an excellent scientific education in the field of Systems Science and Engineering and high-quality research with a focus on business and the international stage.**

It is a leading institution on an international scale in its 4 core activities:

- the **training of high-quality general engineers**
- **research in engineering and systems science**
- the **training of doctors** (PhD) based on its strong involvement in 8 doctoral schools, and Master's education (18 specialisms which reflect its research areas)
- **Continuing education** Executive Education, resulting in Specialist Master's Degrees (23 courses) and Executives Certificates

[www.centralesupelec.fr](http://www.centralesupelec.fr)

## CentraleSupélec in a few figures

**4 300** students

**500** PhD students

**3 200** student engineers

and about **30%** of students are international

**17** laboratories and research teams

A network of **40 000** graduates in work across all,

sectors and in **5** continents Ranked

**N°2** engineering school in France

**N°22** in the world in employer reputation in the QS rankings





## CONTACTS

**Managing Director:** Romain Soubeyran  
**Deputy Managing Director:**  
Philippe Dufourcq

General Management Department  
[dgs@centralesupelec.fr](mailto:dgs@centralesupelec.fr)

**Studies Department**  
+33 (0)01 75 31 66 48  
[florence.perrier@centralesupelec.fr](mailto:florence.perrier@centralesupelec.fr)  
[pierre-yves.richard@centralesupelec.fr](mailto:pierre-yves.richard@centralesupelec.fr)  
(work-study)

**Business Partnerships Department**  
+33 (0)01 75 31 65 3  
[muriel.rouaux@centralesupelec.fr](mailto:muriel.rouaux@centralesupelec.fr)

**The Department for International Relations**  
+33 (0)01 75 31 61 60  
[contact.international@centralesupelec.fr](mailto:contact.international@centralesupelec.fr)

**Communications Department**  
+33 (0)01 75 31 61 03  
[lydie.adouvi@centralesupelec.fr](mailto:lydie.adouvi@centralesupelec.fr)

**Communications Department**  
+33 (0)01 75 31 62 77  
[communication@centralesupelec.fr](mailto:communication@centralesupelec.fr)

**Further Training**  
+33 (0)01 75 31 63 42  
[info.exed@centralesupelec.fr](mailto:info.exed@centralesupelec.fr)

**Administrative registration, student social security, grant applications, etc.**  
+33 (0)01 75 31 67 45  
[sgae@centralesupelec.fr](mailto:sgae@centralesupelec.fr)

**Medical Service**  
[yann.le-goff@centralesupelec.fr](mailto:yann.le-goff@centralesupelec.fr)

# AgroParisTech

The National Institute of Life Sciences, Industries and the Environment, otherwise known as AgroParisTech, is a partner institution of Université Paris-Saclay.

The engineering training provided includes three main disciplines (life sciences, engineering sciences and economic, social and management sciences) which are combined in order to find solutions to today's major challenges. This expertise is gradually deepened through one of the institution's four key fields:

- sustainable production, industries and regions for sustainable development
- food engineering, biomolecules and energy
- environmental management and engineering
- engineering and health: people, bioproducts, environment

<http://www2.agroparistech.fr/>

## AgroParisTech in a few figures

More than **3000** students including:

**7%** apprentices

**12%** of doctoral students

**800** agents including **250** teacher-researchers and researchers and

more than **850** associate research staff

**22** research units including a research and development unit

a network of **18,000** graduates





## CONTACTS

### **Training Department:**

#### **Director:**

[dir-formation@agroparistech.fr](mailto:dir-formation@agroparistech.fr)

Director of the training department  
professional: Agnès Marsset-Baglieri  
[executive@agroparistech.fr](mailto:executive@agroparistech.fr)

### **Apprentice training center**

Director: Sylvain Baby  
[cfa@agroparistech.fr](mailto:cfa@agroparistech.fr)

### **Direction of doctoral training:**

Director: Christine Duvaux-Ponter  
[dfd@agroparistech.fr](mailto:dfd@agroparistech.fr)

### **Legal deposit of theses:**

Person in charge: Jonga Dequéant  
[service-these@agroparistech.fr](mailto:service-these@agroparistech.fr)

### **Partnerships Directorate**

Director: Maryvonne Lassalle-de Salins  
[partnerships@agroparistech.fr](mailto:partnerships@agroparistech.fr)

### **Department of research, innovation and transfer technological**

Director: Alexandre Péry  
[dritt@agroparistech.fr](mailto:dritt@agroparistech.fr)

### **International Relations Department**

Director: Marine Godaux  
[drie@agroparistech.fr](mailto:drie@agroparistech.fr)

### **Directorate of Documentation and Cultural Heritage**

- Palaiseau Library:  
Manager: Christophe Stephan  
[bibliocaps@agroparistech.fr](mailto:bibliocaps@agroparistech.fr)  
- Monitoring and documentary products  
division:  
Responsible: Patricia Jeannes  
[patricia.jeannes@agroparistech.fr](mailto:patricia.jeannes@agroparistech.fr)  
- Image and iconography department:  
Manager: Celia Larcher  
[poleimage@agroparistech.fr](mailto:poleimage@agroparistech.fr)  
- Cultural heritage and living museum:  
Manager: Aurélie Utzeri  
[musee@agroparistech.fr](mailto:musee@agroparistech.fr)

### **Communications management**

Director: Cécile Mathey  
[communication@agroparistech.fr](mailto:communication@agroparistech.fr)

# École Normale Supérieure Paris-Saclay

**The École normale supérieure Paris-Saclay, a Grande École for research and higher education, aims to guide its students towards completing a PhD. Students are carefully selected and follow intensive courses in the basic sciences, humanities and social sciences or engineering sciences.**

The École also offers several unique research training courses on topics such as quantum technologies, artificial intelligence and research-creation. ENS Paris-Saclay, which has been located on the Saclay plateau since 2020, coordinates the Graduate School for Research and Higher Education Professions from within Université Paris-Saclay, which is the top university in France.

The School's new building, designed by Renzo Piano Building Workshop, embodies the teaching philosophy of the École Normale Supérieure in that it combines research spaces and teaching rooms and promotes a cross-disciplinary approach. Together with 3 other ENS, its public service mission is to guide the best pupils and students into academic and senior public service careers and to all those careers in the public and private sector which require a high level of scientific expertise.

<https://ens-paris-saclay.fr/>

## École Normale Supérieure Paris-Saclay in a few figures

**1 650** École Normale Supérieure students, of which 181 are international students

**11** teaching departments in 3 areas

- Basic Sciences
- Engineering Science
- Human and social sciences

**12** laboratories staffed by 600 researchers and PhD students

**220** technical and administrative staff

**3** cross-disciplinary research institutes



## CONTACTS

**President:** Pierre-Paul Zalio Managing Director of Services: François Tavernier

**Department of Education and Student Life**  
+33 (0)1 81 87 49 00  
[dsve@ens-paris-saclay.fr](mailto:dsve@ens-paris-saclay.fr)

**Continuing education department**  
+33 (0)01 81 87 48 98  
[fcd@ens-paris-saclay.fr](mailto:fcd@ens-paris-saclay.fr)

**International Relations Department**  
+33 (0)01 81 87 49 39  
[ri@ens-paris-saclay.fr](mailto:ri@ens-paris-saclay.fr)

**Department of languages**  
+33 (0)01 81 87 56 36  
[secretariat.lang@ens-paris-saclay.fr](mailto:secretariat.lang@ens-paris-saclay.fr)

**Preventative medicine service**  
+33 (0)1 81 87 49 89  
[secretariat.medical@ens-paris-saclay.fr](mailto:secretariat.medical@ens-paris-saclay.fr)

## Library

+33 (0)01 81 87 50 25  
[biblio@ens-paris-saclay.fr](mailto:biblio@ens-paris-saclay.fr)

## Communication

+33 (0)1 81 87 48 88  
[communication@ens-paris-saclay.fr](mailto:communication@ens-paris-saclay.fr)

## Scène de recherche

[culture@ens-paris-saclay.fr](mailto:culture@ens-paris-saclay.fr)

# Institut d'Optique Graduate School

**The Institut d'Optique Graduate School is an engineering school (SupOptique) and a centre of research and innovation. It is a partner institution of Université Paris-Saclay and also a member of ParisTech.**

Access to the School is via the joint CentraleSupélec competitive exam for courses PC, PSI, MP and TSI, or via the general Banque PT competitive exam and the international ParisTech competitive exam (an international competitive examination mainly for students from Asia, South America and Russia). All other places are reserved for 'admissions parallèles' students, direct applications or through the GEI-Univ competitive exam.

For over 100 years, the SupOptique community has been at the forefront of photonics in France and abroad. The school provides an outstanding education in Systems Engineering. It combines a variety of skills (digital and Information Technology, electronics, applied mathematics) based around a core focus on optics and photonics.

[www.institutoptique.fr](http://www.institutoptique.fr)

## The Institut d'Optique Graduate School in a few figures

**500** students in the engineering cycle and 50 Master's students

**150** PhD students

**130** researchers and academic staff

**100** engineers, technicians and administrative staff

**200** innovators and entrepreneurs

**190** teachers

**30 %** experimental training (projects and practical work)





## CONTACTS

**Managing Director:** Jean-Louis Marin  
Head of Services: Agnès Seckler

**Deputy Managing Director for Education**

Riad Haidar  
[Riad.haidar@institutoptique.fr](mailto:Riad.haidar@institutoptique.fr)

**Joint Department for Continued Education**

Contact: Emilie Ericher  
[Emilie.ericher@institutoptique.fr](mailto:Emilie.ericher@institutoptique.fr)

**Department of Student Life Manager:**

Kevin Housset  
[Kevin.housset@institutoptique.fr](mailto:Kevin.housset@institutoptique.fr)

**Head of International Relations**

Pierre Baladi  
[Pierre.baladi@institutoptique.fr](mailto:Pierre.baladi@institutoptique.fr)

**Centre of Language Resources Head:**

Annick Manco  
[Annick.manco@institutoptique.fr](mailto:Annick.manco@institutoptique.fr)

**Library**

Manager: Marie-Laure Edwards  
[Marie-laure.edwards@institutoptique.fr](mailto:Marie-laure.edwards@institutoptique.fr)

**Department of Communication Head:**

Kenza Cherkaoui  
[Kenza.cherkaoui@institutoptique.fr](mailto:Kenza.cherkaoui@institutoptique.fr)

# Université d'Évry

**This university is firmly rooted in its region and is spread across three campuses in the heart of Évry, Juvisy and Brétigny.**

Université d'Évry is an associate member university of Université Paris-Saclay and stands out in particular thanks to its cutting-edge research in exact sciences such as genomics and post-genomics, applied mathematics, Information Technology, information and communication sciences and technologies, as well as space sciences and technologies, robotics and autonomous air and land vehicles. In addition, the Human and Social Sciences (economics, law, sociology, history, musicology) study societal issues as closely as possible, question economic balances, compare public and private law and examine the place of mankind at work and in relation to visual media, art and music.

[www.univ-evry.fr](http://www.univ-evry.fr)



## Université d'Évry in a few figures

**12 000** students

**545** teacher researchers

**641** technical and administrative staff

**18** laboratories

**10** technology platforms



## CONTACTS

**President:** Patrick CURMI Managing

**Director of Services:**

Aurélia CARRÉ DE LUSANÇAY

### **Department of Education and Examinations**

Manager: Albert CASSOLY

+33 (0)1 69 47 71 93 - [scolarite@univ-evry.fr](mailto:scolarite@univ-evry.fr)

### **Direction of Orientation and professional integration**

Director: Geneviève Solvignon

01 69 47 76 17

[doip@univ-evry.fr](mailto:doip@univ-evry.fr)

### **Common Service**

Continuing Education

Director: Catherine Borgne

[fc@univ-evry.fr](mailto:fc@univ-evry.fr)

### **Department of Student Life and Campus**

Director: Maria MUNIER

01 69 47 70 30

[cvec@univ-evry.fr](mailto:cvec@univ-evry.fr)

### **Specific diets division – Disability:**

Odile DEMOUGIN

01 69 47 71 84

[handicap@univ-evry.fr](mailto:handicap@univ-evry.fr)

### **Department of Research and International relationships**

Director: Gaëlle BREAU

[drri@univ-evry.fr](mailto:drri@univ-evry.fr)

01 69 47 70 26

### **LANSAD Department (LANGues for Specialists of Other Disciplines)**

[secretary-crl@univ-evry.fr](mailto:secretary-crl@univ-evry.fr)

01 69 47 74 20

University Service of Medicine

### **Preventive and Health Promotion**

01 69 47 90 03

[secretariat-sumpps@univ-evry.fr](mailto:secretariat-sumpps@univ-evry.fr)

### **University Library**

Director: Maud Soverini

01 69 47 89 22

[accueil-bu@univ-evry.fr](mailto:accueil-bu@univ-evry.fr)

### **Communications management**

Director: Aude Brianto-Escande

01 69 47 70 13

[communication@univ-evry.fr](mailto:communication@univ-evry.fr)

# Université Versailles Saint-Quentin-en-Yvelines (UVSQ)

Created in 1991, the Versailles Saint-Quentin-en-Yvelines University comprises over 19,000 students as well as 1,000 teaching and research staff in 39 research units.

It offers over 200 courses in the 4 main disciplines (Arts, humanities, languages - Law, economics, management - Humanities and social sciences - Science, technology, health).

Spread across 5 campuses in Les Yvelines, it is deeply rooted in its region and close to its partners. With an open attitude to the business world, it has 220 international links. UVSQ has a cross-disciplinary approach with 4 key areas of teaching and offers over 200 graduate-level courses. These include B.U.Ts, Undergraduate Degrees, Master's, PhDs, engineering diplomas and diplomas in medicine.

**In 2025, it will join forces with Université Paris-Saclay, with whom it is currently an associate member university.**

[www.uvsq.fr](http://www.uvsq.fr)

## Versailles Saint-Quentin-en-Yvelines University in a few figures

**19 000** students in initial and continuing education

**1000** teachers and researchers

**680** administrative and technical staff

**35** UR and UMR combined laboratories

**8** technology platforms

**540** PhD students



## CONTACTS

**President:** Alain BUI  
**Managing Director of Services:**  
Anne-Sophie Ho-Massat

**Department of Studies, Training  
and Professional Integration (DEFIP)**  
Danielle ARNOLD – +33 (0)1 39 25 78 84  
[defip@uvsq.fr](mailto:defip@uvsq.fr)

**Department of Orientation and  
Professional Integration** Céline CLOUET  
+33 (0)1 39 25 58 06 [celine.clouet@uvsq.fr](mailto:celine.clouet@uvsq.fr)

**Department of Continuing Education  
and Corporate Relations** Claudine  
GOLKA – +33 (0)1 39 25 46 40 [contact.fc@uvsq.fr](mailto:contact.fc@uvsq.fr)

**Department of the Coordination of  
University Life**  
Delphine ARNOLD +33 (0)1 39 25 53 27  
[defip@uvsq.fr](mailto:defip@uvsq.fr)

**Department of Projects and  
International Relations**  
Arnaud DELIMOGES +33 (0)1 39 25 79 84  
[mobilite@uvsq.fr](mailto:mobilite@uvsq.fr)  
[etudiantetranger@uvsq.fr](mailto:etudiantetranger@uvsq.fr)

**Centre of Language Resources**  
Claudine PIERRE +33 (0)1 39 25 52 70  
[cerel@uvsq.fr](mailto:cerel@uvsq.fr)

**University Department of Preventative  
Medicine and Health Promotion**  
Dr Emmanuelle VICAIGNE  
+33 (0)1 39 25 57 22 / 42 13  
[ssu@uvsq.fr](mailto:ssu@uvsq.fr)

**University library**  
Nathalie WATRIN +33 (0)1 39 25 54 58  
[busqy@bib.uvsq.fr](mailto:busqy@bib.uvsq.fr)

**Communications Department**  
Myriam Denis-Ledru  
+33 (0)01 39 25 78 63  
[communication@uvsq.fr](mailto:communication@uvsq.fr)

**Cultural Department**  
Fanny SOUCHET +33 (0)1 39 25 52 44  
[service.culturel@uvsq.fr](mailto:service.culturel@uvsq.fr)

**University Department of Physical and  
Sports Activities**  
Emmanuel Villaret +33 (0)1 39 25 50 92  
[scaps@uvsq.fr](mailto:scaps@uvsq.fr)

# Glossary / List of abbreviations

## A

AAIF: Astronomy and Astrophysics, Ile-de-France (Astronomie et Astrophysique d'Île-de-France)  
AAP: Call for projects (Appel à projets)  
ABIES: Agriculture, Food, Biology, Environment, Health (Agriculture, Alimentation, Biologie, Environnement, Santé)  
APT: AgroParisTech  
ASIA: Social Action Academic Initiative (Actions Sociales d'Initiative Académique)  
ASIU: University Individual Social Assistance (Aide Sociale Individuelle de l'Université)

## B

BDE: Students' Office (Bureau des Etudiants)  
BIOSIGNE: Signalling and Integrative Networks in Biology (Signalisations et réseaux intégratifs en biologie)  
BU: University Library (Bibliothèque Universitaire)  
B.U.T. : University Undergraduate Degree in Technology (Bachelor Universitaire de Technologies)

## C

CA: The Governing Board (Conseil d'Administration) CAC: Academic Council (Conseil Académique)  
CAP: Joint Administrative Commission (Commission Administrative Paritaire)  
CASU: Member of the Governing Board for Schools and Universities  
Conseiller d'Administration Scolaire et Universitaire  
CBMS: Oncology , Biology, Medicine, Health Cancérologie, Biologie, Médecine, Santé  
CCP: Joint Advisory Committee (Commission Consultative Paritaire) CEA: Alternative Energies and Atomic Energy Commission (Commissariat à l'énergie atomique et aux énergies alternatives)  
CESFO: The Orsay Faculty Committee for Social Support (Comité d'Entraide Sociale de la Faculté d'Orsay)  
CFA: Apprenticeship Training Centre (Centre de formations des apprentis) CFVU: Committee for Education and University Life (Commission de la Formation et de la Vie

Universitaire)  
CHU: University Hospital Centre CIO: Information and Orientation Centre  
CLES: Certification of Language Proficiency in Higher Education (Certification de Compétences en Langue de l'Enseignement Supérieur) CNU: National Council of Universities (Conseil National des Universités)  
CNRS: National Scientific Research Centre (Centre National de la Recherche Scientifique)  
CPGE: Preparatory Courses for Admission to the Grandes Écoles (Classe préparatoire aux grandes écoles)  
CR: Research Commission (Commission de la Recherche) CROUS: Regional Centre for Academic and Educational Works (Centres Régionaux des OEuvres Universitaires et Scolaires)  
CTI: Commission of Engineering Qualifications (Commission des Titres d'Ingénieurs) CVEC: Student and Campus Life Contribution (Contribution de Vie Etudiante et de Campus)

## D

DAPS: Directorate for Strategic Steering Support (Direction de l'Aide au Pilotage Stratégique)  
DARI: Directorate for Research and Innovation Activities (Direction des Activités de Recherche et de l'Innovation)  
DE: State Diploma (Diplôme d'État)  
DEM: Law, Economics, Management (Droit, Économie, Management) DES: Specialist State Diploma (Diplôme d'Études Spécialisées) DFR: Department of Training and Success (Direction de la Formation et de la Réussite)  
DIP: Directorate of Educational Innovation (Direction de l'Innovation Pédagogique)  
DIU: Inter-university Diploma (Diplôme Interuniversitaire) DU: University Diploma (Diplôme d'Université)  
DU3E: University Diploma 'Entrepreneurial spirit and Entrepreneurship' (Diplôme d'Université « Esprit d'entreprendre et entrepreneuriat ») DVEEC: Student Life and Equal Opportunities Department (Direction de la Vie Étudiante et Égalité des Chances)  
D2E: Student-Entrepreneur Diploma (Diplôme d'Étudiant-Entrepreneur)

# Glossary / List of abbreviations

## E

ECTS: European Credit Transfer System ('crédits européens' in French)  
ED: Doctoral School (Ecole Doctorale)  
EDMH: Hadamard Doctoral School of Mathematics  
École Doctorale de Mathématique Hadamard  
EDOM: Doctoral School of Waves and Matter (École Doctorale Ondes et Matières)  
EDSP: Doctoral School of Public Health (École Doctorale Santé Publique) EDT: Timetable (Emploi du Temps)  
ENS: École Normale Supérieure ENT: Digital Work Environment (Environnement Numérique de Travail)  
EOBE: Electrical, Optical, Bio: Physics and Engineering  
ESH: Students with Disabilities (Étudiant en Situation de Handicap) EUGLOH: European Alliance for Global Health

## F

FC: Continuing Education (Formation Continue)  
FIE: Innovation-Entrepreneurs Course (Filière Innovation-Entrepreneurs) FLE: French as a Foreign Language (Français Langue Étrangère) FSDIE:  
Fund for Solidarity and Development of Student Initiatives (Fonds de Solidarité et de Développement des Initiatives Etudiantes)  
FTLV: Lifelong Learning (Formation Tout au Long de la Vie)

## G

GATE: Foreign Talent Welcome Desk  
Guichet d'Accueil des Talents Etrangers  
GEA: Business and Administration Management (Gestion des Entreprises et Administrations)  
GEl: Electrical Engineering & Industrial Computing (Génie Électrique et Informatique Industriel)  
GMP: Mechanical and Production Engineering (Génie Mécanique et Productique) GUPS: 'Guichet Unique Paris-Saclay' (One-stop centre Paris-Saclay)

## I

IHES: Institute of Advanced Scientific Studies (Institut des Hautes Études scientifiques)  
INRAE: National Research Institute for Agriculture, Food and the Environment (Institut national de recherche pour l'agriculture, l'alimentation et l'environnement)  
INRIA: National Institute for Research in Information Technology and Automation (Institut national de recherche en informatique et en automatique)  
Inserm: National Research Institute for Health and Medical Research (Institut National de la Santé et de la Recherche Médicale)  
IOGS: Institut d'Optique Graduate School IPPA: Professional Integration, Partnerships and Alumni Hub (pôle Insertion Professionnelle, Partenariat et Alumni)  
IPR: Pharmaceutical Innovation and Research (Innovation Pharmacie et Recherche) ITFA: Therapeutic Innovation from the Fundamental to the Applied (Innovation Thérapeutique du Fondamental Appliqué)  
IUT: University Institute of Technology

## J

JACES: Arts and Culture Days in Higher Education (Journées des Arts et de la Culture dans l'Enseignement Supérieur)

## L

LAS: Entry to Health Studies Degree (Licence Accès Santé)

## M

MAPS: Paris-Saclay Centre for Students (Maison des étudiants de Paris-Saclay)  
MCC: Procedures for Monitoring Knowledge (Modalités de Contrôle des Connaissances)  
MCF: Lecturer (Maître de Conférences)  
MCUPH: Hospital Practitioner University Lecturer (Maître de Conférences des Universités Praticien Hospitalier) MESRI: Ministry of Higher Education, Research and Innovation (Ministère de l'Enseignement Supérieur, de la Recherche et de l'Innovation)  
MISS: Initiative and Awareness of Science Centre (Maison d'Initiative et de Sensibilisation aux Sciences)



# Glossary / List of abbreviations

## O

OCPE: Guidance and Development of Research Projects Hub  
Pôle Orientation et Construction du Projet d'Etude  
ORIP: Guidance Centre for Success and Professional Integration (Orientation Observatoire de la Réussite et de l'Insertion Professionnelle)  
ONERA: National Office for Aerospace Studies and Research (Office national d'études et de recherches aérospatiales)  
OVE: Centre for Student Life (Observatoire de la Vie Etudiant)

## P

PACES: First Joint Year of Health Studies (Première Année Commune des Etudes de Santé)  
PAEH: Support Plan for Students with Disabilities (plan d'accompagnement des étudiants handicapés)  
PAES: First Year of Health studies (Première Année des Etudes de Santé)  
PASS: Specialist Health Course (Parcours Spécifique Santé)  
PEIPS: Paris-Saclay Entrepreneurship and Innovation Hub (Pôle entrepreneuriat et innovation Paris-Saclay)  
PHENIC'S: Particles, Hadrons, Energy; Nuclei, Instrumentation, Imaging, Cosmos and Simulation (Particules, Hadrons, Énergie; Noyau, Instrumentation, Imagerie, Cosmos et Simulation)  
PIF: Doctoral School of Physics, Île-de-France (école doctorale en Physique en Île-de-France)

## R

RI: International Relations (Relations Internationales)  
RSE: Corporate Social Responsibility (Responsabilité sociale des entreprises)  
RU: University Restaurant

## S

SCD: Joint Documentation Service (Service Commun de la Documentation)  
SDSV: Structure and Dynamics of Living Systems (Structure et Dynamique des Systèmes

Vivants)

SEIF: Île-de-France Environmental Science (Sciences de l'Environnement en Île-de-France)  
SeVe: Plant Sciences (Sciences du Végétales)  
SMEMAG: Mechanical and Energy, Materials and Geosciences (Sciences Mécaniques et Énergétiques, Matériaux et Géosciences)  
SNEE: The National Student-Entrepreneur Status (Statut National d'Étudiant- Entrepreneur)  
SSH: Social Science and Humanities (Sciences Sociales et Humanités)  
SSMH: Sports, Motor and Human Movement Sciences (Sciences du Sport, de la Motricité et du Mouvement Humain)  
STIC: Science and Technology of Information and Communication  
STAPS: Science and Technology of Physical Activity and Sport (Sciences et Techniques des Activités Physiques et Sportives)  
SUMPPS: University Department of Preventive Medicine and Health Promotion (Service Universitaire de Médecine Préventive et Promotion de la Santé)

## T

TC: Marketing Techniques (Techniques de Commercialisation)  
TD: Tutorials (Travaux Dirigés)  
TICE: Information and Communication Technologies for Education (Technologies de l'Information et de la Communication pour l'Enseignement)  
TP: Practical work

## U

UE: Teaching Unit  
UFR: Training and Research Units (also called 'faculties') (Unité de Formation et de Recherche)  
UMR: Joint Research Unit (Unité Mixte de Recherche)  
UPSaclay: Université Paris-Saclay

## V

VAE: Accreditation of Prior Learning (Validation des Acquis de l'Expérience)  
VAPP: Accreditation of Professional and Personal Experience (Validation des Acquis Professionnels et Personnels)  
VP: Vice-President (Vice-Président)  
VPE: Student Vice-President (Vice-Président Étudiant)

# Index / Key words

Financial assistance.....	75
Work-study placement.....	41
Alumni.....	12
Social workers.....	76
Student associations.....	64
Libraries.....	67
Grants.....	75
University Undergraduate Degree in Technology (B.U.T).....	29
University Committees.....	10
Culture.....	60
Commission of Engineering Qualifications (CVEC).....	19
Sustainable development.....	77
Design Spot.....	78
PhD.....	43
University Diploma (DU).....	29
Undergraduate University School.....	26
Equality between men and women.....	77
Student Entrepreneurship.....	51
EUGLOH.....	56
Continuing education.....	42
Engineering courses.....	32
Graduate Schools.....	34
Disability.....	74
Harassment.....	77
Professional Integration.....	52
Registration.....	16
Student jobs.....	53
Languages.....	54
LAS.....	38
Undergraduate Degrees.....	27
Accommodation.....	70
Magistères.....	39
Paris-Saclay Centre for Students.....	63
Master's.....	34
Digital.....	65
Orientation.....	50
PASS.....	38
International Relations.....	55
Food and Drink Outlets.....	69
Health.....	72
Social Security.....	75
Digital Services.....	65
Sport.....	62
Work placements.....	52
Tutoring.....	53
Accreditation of Prior Learning.....	42

# Notes

A series of horizontal dotted lines for writing notes.



## **STUDENT GUIDE**

### **Université Paris-Saclay**

#### **Publishing Director**

Estelle lacona,  
President of Université Paris-Saclay

**Coordination:** Brand and Communication Department

**Cover illustration:** Delphine Mérieau

**Graphic design and production:** Delphine Mérieau  
instagram @hello.delphine / [www.delphinemerieau.com](http://www.delphinemerieau.com)

**Photo credits:** Université Paris-Saclay, EPA-Alticlic, Angélique Gilson, AP-HP Service communication, M. Lecompt, Filippo Fabbri, IUT d'Orsay, Laurent Ghesquière, UVSQ, IOGS, Célia Larcher/AgroParisTech, Michel Denance/ENS Paris-Saclay, Lionel Antoni, Olivier Gitka, Christophe Peus Unsplash / [www.unsplash.com](http://www.unsplash.com)

**Symbols:** Nounproject / [www.thenounproject.com](http://www.thenounproject.com)

**Publication date:** July 2022





[universite-paris-saclay.fr](http://universite-paris-saclay.fr)



UParisSaclay



@UnivParisSaclay



Université\_Paris\_Saclay

université  
PARIS-SACLAY