

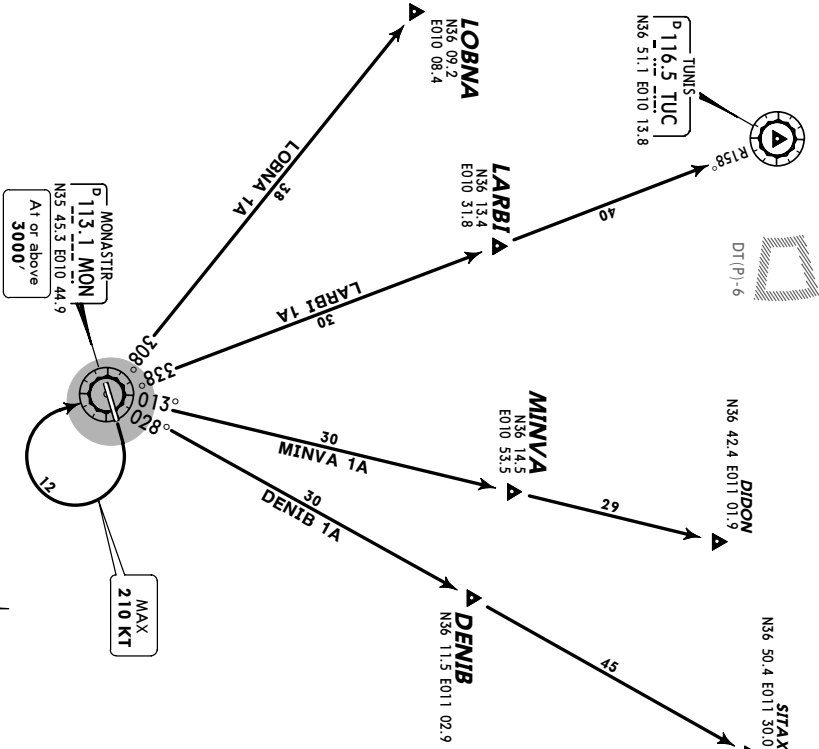
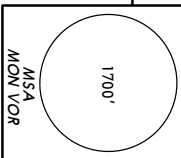
**DTMB/MIR**  
**HABIB BOURGUIBA**

**JEPPesen**  
 9 SEP 05 (10-3)

**MONASTIR, TUNISIA**  
**SID**

Apt Elev 9' Trans level: By ATC Trans alt: 6000'  
 SIDs are also noise abatement procedures.

**DENIB 1A [DENIA], LARBI 1A [LARBIA]**  
**LOBNA 1A [LOBNIA], MINVA 1A [MINVIA]**  
**RWY 07 DEPARTURES**  
 TO NORTH  
**SPEEDS MAX 250 KT BELOW FL100**



These SIDs require a minimum climb gradient of 365' per NM (6%) until 3000'.  
 Gnd speed-KT 75 100 150 200 250 300  
 365' per NM 456 608 911 1215 1519 1823  
 If unable to comply advise ATC.

**ROUTING**

SID	ROUTING
DENIB 1A	Turn RIGHT to MON, MON R-028 to DENIB.
LARBI 1A	Turn RIGHT to MON, MON R-338 to LARBI.
LOBNA 1A	Turn RIGHT to MON, MON R-308 to LOBNA.
MINVA 1A	Turn RIGHT to MON, MON R-013 to MINVA.

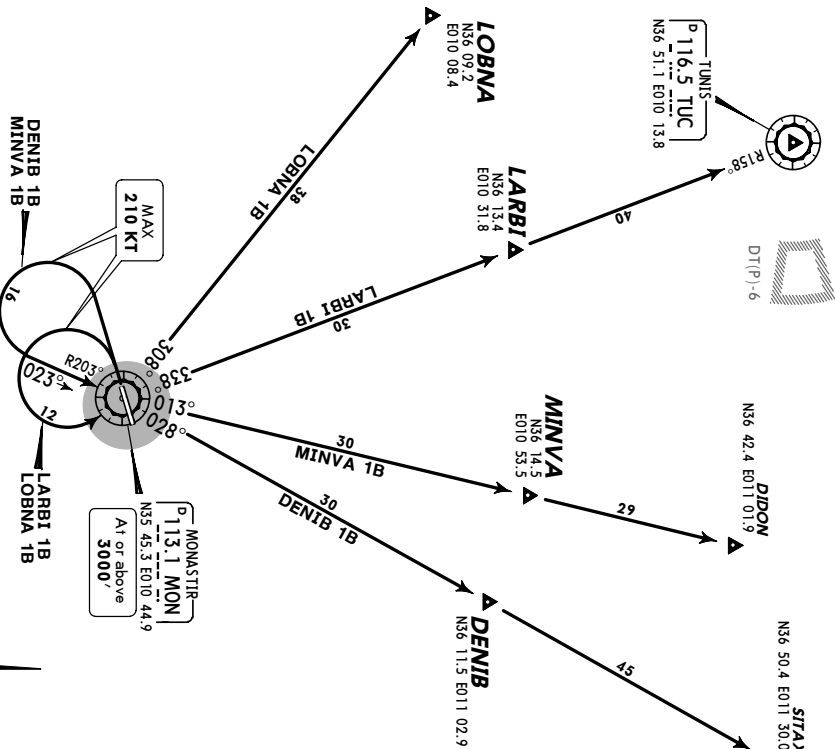
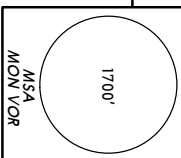
**DTMB/MIR**  
**HABIB BOURGUIBA**

**JEPPesen**  
 9 SEP 05 (10-3A)

**MONASTIR, TUNISIA**  
**SID**

Apt Elev 9' Trans level: By ATC Trans alt: 6000'  
 SIDs are also noise abatement procedures.

**DENIB 1B [DENIB], LARBI 1B [LARBI]**  
**LOBNA 1B [LOBNIB], MINVA 1B [MINVIB]**  
**RWY 25 DEPARTURES**  
 TO NORTH  
**SPEEDS MAX 250 KT BELOW FL100**

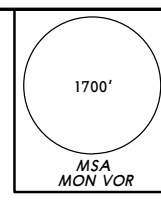


These SIDs require a minimum climb gradient of 365' per NM (6%) until 3000'.  
 Gnd speed-KT 75 100 150 200 250 300  
 365' per NM 456 608 911 1215 1519 1823  
 If unable to comply advise ATC.

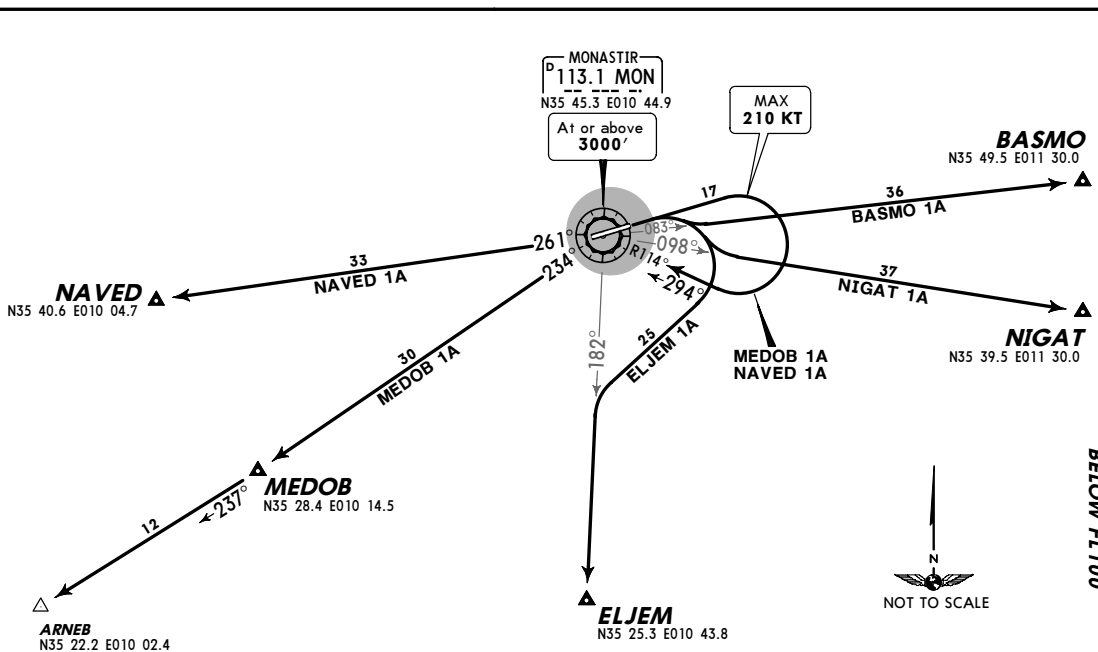
**ROUTING**

SID	ROUTING
DENIB 1B	Turn LEFT, intercept MON R-203 inbound to MON, MON R-028 to DENIB.
LARBI 1B	Turn LEFT to MON, MON R-338 to LARBI.
LOBNA 1B	Turn LEFT to MON, MON R-308 to LOBNA.
MINVA 1B	Turn LEFT, intercept MON R-203 inbound to MON, MON R-013 to MINVA.

**DTMB/MIR**  
**HABIB BOURGUIBA**  
 6 JAN 06 (10-3B)  
**JEPPRESEN**  
**MONASTIR, TUNISIA**  
**SID**



**BASMO 1A [BASMI1A], ELJEM 1A [ELJEM1A]  
 MEDOB 1A [MEDO1A], NAVED 1A [NAVE1A]  
 NIGAT 1A [NIGA1A]  
 Rwy 07 DEPARTURES  
 TO EAST, SOUTH & WEST  
 SPEED MAX 250 KT  
 BELOW FL100**



These SIDs require a minimum climb gradient of 365' per NM (6%) until 3000'.

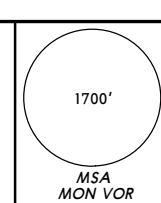
Gnd speed-KT	75	100	150	200	250	300
365' per NM	456	608	911	1215	1519	1823

If unable to comply advise ATC.

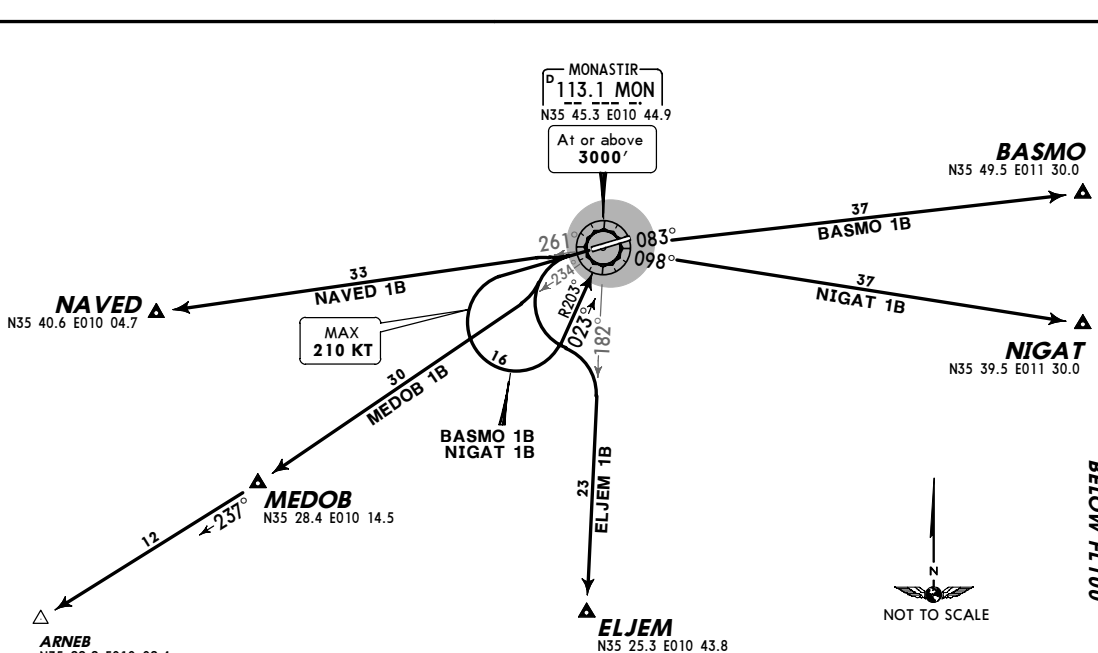
No turn permitted below 500'.

SID	ROUTING
<b>BASMO 1A</b>	Turn RIGHT as soon as possible, intercept MON R-083 to BASMO.
<b>ELJEM 1A</b>	Turn RIGHT as soon as possible, intercept MON R-182 to ELJEM.
<b>MEDOB 1A</b>	Turn RIGHT, intercept MON R-114 inbound to MON, MON R-234 to MEDOB.
<b>NAVED 1A</b>	Turn RIGHT, intercept MON R-114 inbound to MON, MON R-261 to NAVED.
<b>NIGAT 1A</b>	Turn RIGHT as soon as possible, intercept MON R-098 to NIGAT.

**DTMB/MIR**  
**HABIB BOURGUIBA**  
 6 JAN 06 (10-3C)  
**JEPPRESEN**  
**MONASTIR, TUNISIA**  
**SID**



**BASMO 1B [BASMI1B], ELJEM 1B [ELJEM1B]  
 MEDOB 1B [MEDO1B], NAVED 1B [NAVE1B]  
 NIGAT 1B [NIGA1B]  
 Rwy 25 DEPARTURES  
 TO EAST, SOUTH & WEST  
 SPEED MAX 250 KT  
 BELOW FL100**



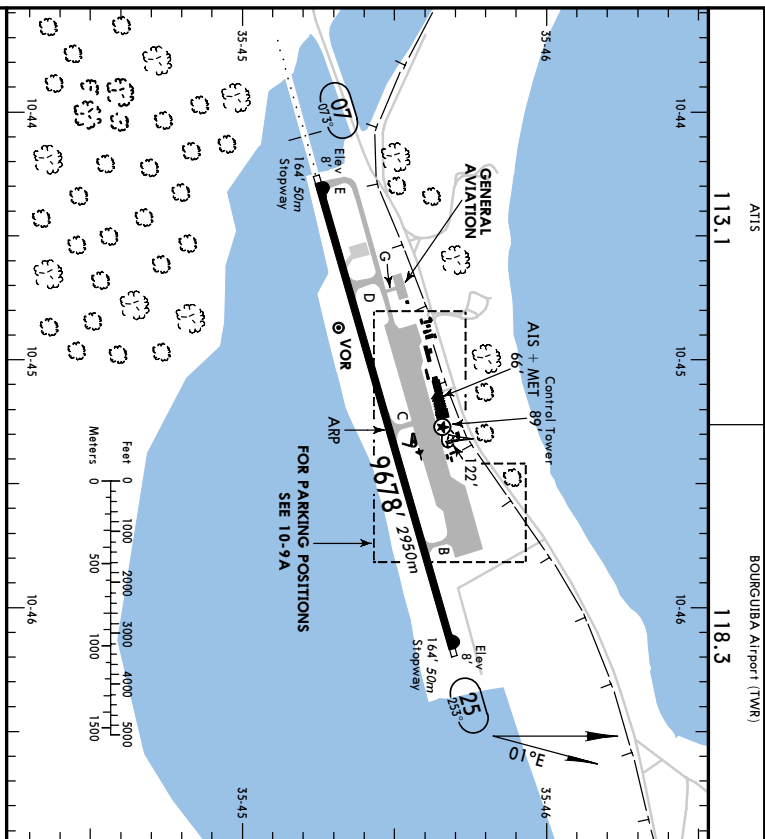
These SIDs require a minimum climb gradient of 365' per NM (6%) until 3000'.

Gnd speed-KT	75	100	150	200	250	300
365' per NM	456	608	911	1215	1519	1823

If unable to comply advise ATC.

No turn permitted below 500'.

SID	ROUTING
<b>BASMO 1B</b>	Turn LEFT, intercept MON R-203 inbound to MON, MON R-083 to BASMO.
<b>ELJEM 1B</b>	Turn LEFT as soon as possible, intercept MON R-182 to ELJEM.
<b>MEDOB 1B</b>	Turn LEFT as soon as possible, intercept MON R-234 to MEDOB.
<b>NAVED 1B</b>	As soon as possible intercept MON R-261 to NAVED.
<b>NIGAT 1B</b>	Turn LEFT, intercept MON R-203 inbound to MON, MON R-098 to NIGAT.



**GENERAL**  
 180° turns on rwy permitted on turning pads only (wide turns recommended). Rwy 07 right-hand circuit.

**ADDITIONAL RUNWAY INFORMATION**

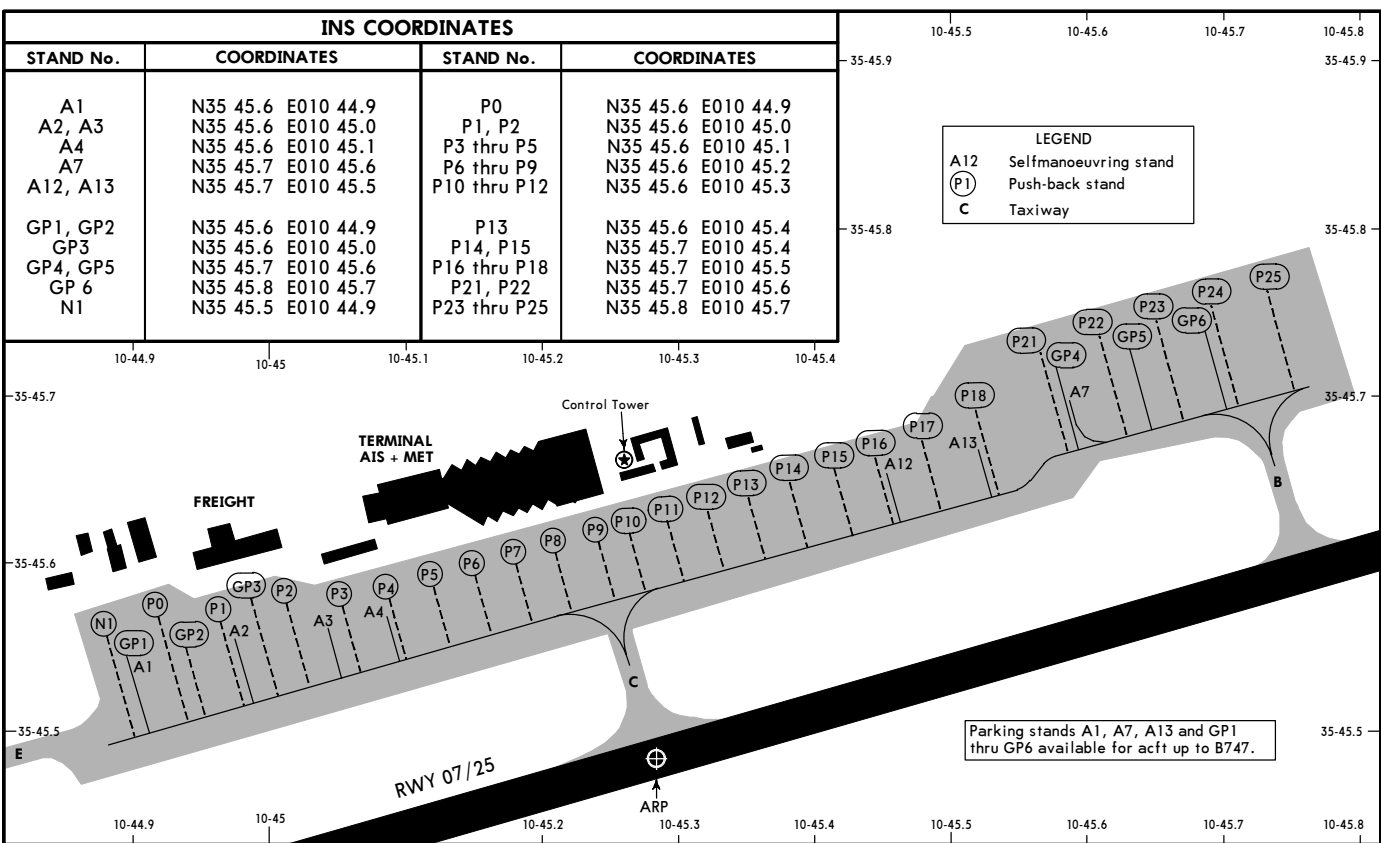
RWY	LANDING BEYOND		TAKE-OFF	WIDTH
	Threshold	Glide Slope		
07	HIRL (50m)	HAIS PAPI-L (3.0°)	RVR O/R	148'
25	HIRL (50m)	PAPI-L (3.0°)	RVR O/R	45m

AIR CARRIER (JAA)		AIR CARRIER (JAR 121)	
TAKE-OFF			
LVP must be in force RCIM (DAY only) or RL		Adequate Vis Ref	
400m		RVR 500m VIS 400m	
2 Eng 3 & 4 Eng			

AIR CARRIER (JAA)		AIR CARRIER (JAR 121)	
TAKE-OFF			
LVP must be in force RCIM (DAY only) or RL		Adequate Vis Ref	
400m		RVR 500m VIS 400m	
2 Eng 3 & 4 Eng			

CHANGES: see other side.

© JEPPesen SANDERSON, INC., 2001. ALL RIGHTS RESERVED.



CHANGES: Parking stands, INS coordinates.

© JEPPesen SANDERSON, INC., 2001. ALL RIGHTS RESERVED.

DTMB/MIR

13 FEB 04



**JAA MINIMUMS**  
**MONASTIR TUNISIA**  
 HABIB BOURGUIBA

**TAKE-OFF RWY 07, 25**

LVP must be in Force			
	RCLM (DAY only) or RL	RCLM (DAY only) or RL	NIL (DAY only)
A	250m	400m	500m
B			
C			
D	300m		

DTMB/MIR

13 FEB 04



**JAA MINIMUMS**  
**MONASTIR TUNISIA**  
 HABIB BOURGUIBA

**STRAIGHT-IN RWY**

07	ILS	A	B	C	D
	ALS out	298' (290')	308' (300')	318' (310')	328' (320')
	LOC with DME	650m	700m	800m	900m
	LOC w/o DME	1200m	1200m	1200m	1200m
	ALS out	520' (512')	520' (512')	520' (512')	520' (512')
	VOR DME	530' (522')	530' (522')	530' (522')	530' (522')
	ALS out	1000m	1200m	1450m	1950m
	VOR DME	1500m	1500m	2000m	2000m
	ALS out	520' (511')	520' (511')	520' (511')	520' (511')
	Lctr VOR	1000m	1200m	1450m	1950m
	ALS out	1500m	1500m	2000m	2000m
	VOR	520' (511')	520' (511')	520' (511')	520' (511')
	ALS out	1000m	1200m	1450m	1950m
	Lctr	1500m	1500m	2000m	2000m
	ALS out	750' (741')	750' (741')	750' (741')	750' (741')
	VOR	1300m	1700m	2150m	2800m
	ALS out	1500m	1700m	2150m	2800m
	Lctr	600' (591')	600' (591')	600' (591')	600' (591')
	ALS out	1000m	1300m	1650m	2150m
	ALS out	1500m	1500m	2000m	2150m
	RNAV (VOR DME)	520' (511')	520' (511')	520' (511')	520' (511')
	ALS out	1400m	1700m	2000m	2450m
	ALS out	1500m	1700m	2000m	2450m
	GPS	520' (511')	520' (511')	520' (511')	520' (511')
	ALS out	1400m	1700m	2000m	2450m
	ALS out	1500m	1700m	2000m	2450m
	VOR DME	470' (461')	470' (461')	470' (461')	470' (461')
	VOR	1500m	1700m	2000m	2450m
	ALS out	520' (511')	520' (511')	520' (511')	520' (511')
	VOR	1500m	1850m	2150m	2650m
	RNAV (VOR DME)	470' (461')	470' (461')	470' (461')	470' (461')
	ALS out	1500m	1700m	2000m	2450m
	GPS	470' (461')	470' (461')	470' (461')	470' (461')
	ALS out	1500m	1700m	2000m	2450m

① On request only.

CIRCLE-TO-LAND	100 KT	135 KT	180 KT	205 KT
NIGHT: CEIL = MDH	520' (511')	520' (511')	660' (651')	810' (801')
	cell 340' - V1900m	cell 340' - V2800m	cell 440' - V3700m	cell 540' - V4600m

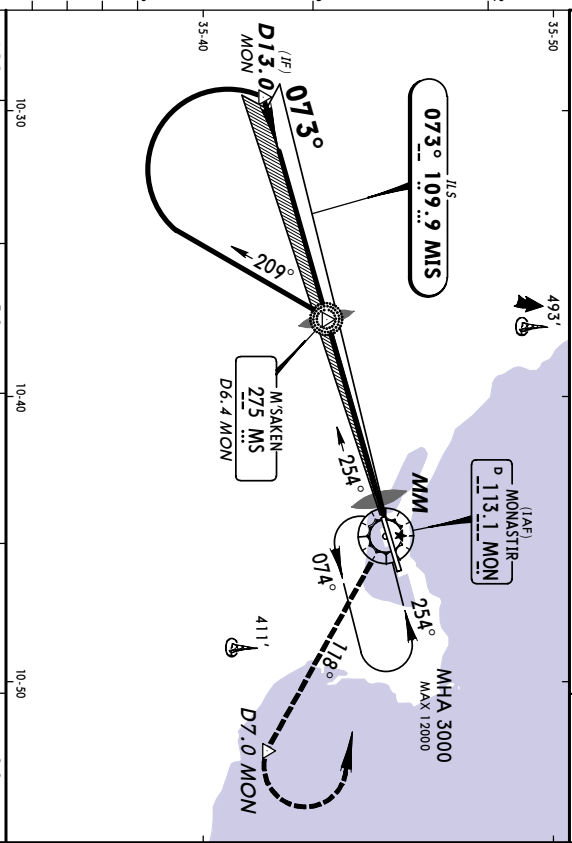
② After LOC (GS out) without DME: 530' (521').

③ After VOR 07: 750' (741').

④ After Lctr 07: 600' (591').

**DTMB/MIR** **JEPPERSEN** **MONASTIR, TUNISIA**  
**HABIB BOURGUIBA** **EFF 15 APR** **(11-1)** **VOR DME ILS of VOR ILS Rwy 07**

ATIS		BOURGUIBA Approach		BOURGUIBA Airport (TWR)	
LOC	Final	GS	ILS	Appt Elev	9'
MIS	Apch Crs	LOM	DA(H)	Refer to	RWY 8'
109.9	073°	1950' (1942')	Minimums		
MISSED APCH: Turn RIGHT to intercept and follow R-118 MON climbing to with DME: D7.0 MON, w/o DME: 2000', then turn LEFT to join VOR at 3000'.					
Alt Set: hPa				Rwy Elev: 0 Hpa	Trans level: By ATC
				Trans alti: 6000'	MISA MON VOR



LOC	MON DME	5.0	4.0	3.0	2.0
(GS out)	ALTITUDE	1510'	1190'	880'	560'
10-30		10-40	10-50		

W/o DME: Start turn at CAT A & B: 2 1/2 Min CAT C & D: 1 1/2 Min from VOR

LOM D6.4 MON 1950' 073° 209°

MM GS240' 275 MS 275 MS

VOR 3000' 254°

MM 35240'

TCH 56'

RWY 07 8'

Pass MM not below 240'

**PANS OPS**

Grid speed-Kts	70	90	100	120	140	160	HIAS	Refer to Missed Apch above
ILS GS 3,000' or	377	485	539	647	755	862	PAPI	
LOC Desc Grad	5.2%							
MAP at VOR								
STRAIGHT-IN LANDING RWY 07		LOC (GS out)		NIGHT: CELL=MDH		CIRCLE-TO-LAND		
DA(H)	A: 298' (290') C: 318' (310')	with DME	LOC (GS out)	MDA(H)	530' (522')			
B: 308' (300') D: 328' (320')	MDA(H) 520' (512')	with DME	LOC (GS out)	MDA(H)	530' (522')			
FULL		ALS out	ALS out	Max Kts	MDA(H)	CELL-VIS		
A	RVR 720m	850m	RVR 1500m	100	520' (511')	340'-1900m		
B	VIS 800m	1150m	RVR 1500m	135	520' (511')	340'-2800m		
C	800m	1200m	VIS 1600m	180	660' (651')	440'-3700m		
D	900m	1950m	VIS 1600m	205	810' (801')	540'-4600m		

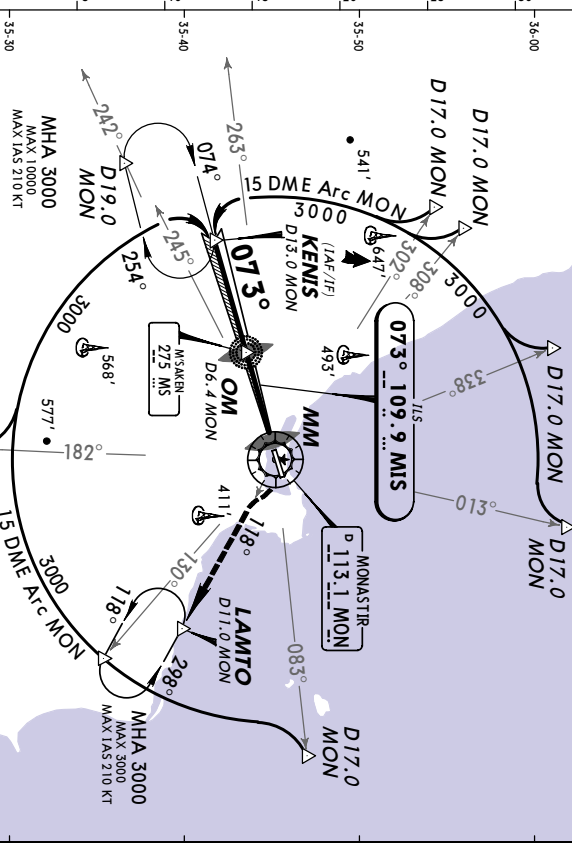
After LOC (GS out) apch without DME: MDA(H) 530' (521')

CHANGES: Trans alt.

© JEPPERSEN SANDERSON, INC., 1999, 2004. ALL RIGHTS RESERVED.

**DTMB/MIR** **JEPPERSEN** **MONASTIR, TUNISIA**  
**HABIB BOURGUIBA** **EFF 15 APR** **(11-2)** **via KENIS VOR DME ILS Rwy 07**

ATIS		BOURGUIBA Approach		BOURGUIBA Airport (TWR)	
LOC	Final	GS	ILS	Appt Elev	9'
MIS	Apch Crs	OM	DA(H)	Refer to	RWY 8'
109.9	073°	1950' (1942')	Minimums		
MISSED APCH: Turn RIGHT to intercept and follow R-118 MON to join LAMTO holding at 3000', then as directed. MAX IAS 210 KT.					
Alt Set: hPa				Rwy Elev: 0 Hpa	Trans level: By ATC
				Trans alti: 6000'	MISA MON VOR



LOC	MON DME	5.0	4.0	3.0	2.0
(GS out)	ALTITUDE	1510'	1190'	880'	560'
10-20		10-30	10-40	10-50	11-00

W/o DME: Start turn at CAT A & B: 2 1/2 Min CAT C & D: 1 1/2 Min from VOR

LOM D6.4 MON 1950' 073° 209°

MM GS240' 275 MS 275 MS

VOR 3000' 254°

MM 35240'

TCH 56'

RWY 07 8'

Pass MM not below 240'

**PANS OPS**

Grid speed-Kts	70	90	100	120	140	160	HIAS	Refer to Missed Apch above
ILS GS 3,000' or	377	485	539	647	755	862	PAPI	
LOC Desc Grad	5.2%							
MAP at VOR								
STRAIGHT-IN LANDING RWY 07		LOC (GS out)		NIGHT: CELL=MDH		CIRCLE-TO-LAND		
DA(H)	A: 298' (290') C: 318' (310')	with DME	LOC (GS out)	MDA(H)	520' (512')			
B: 308' (300') D: 328' (320')	MDA(H) 520' (512')	with DME	LOC (GS out)	MDA(H)	520' (512')			
FULL		ALS out	ALS out	Max Kts	MDA(H)	CELL-VIS		
A	RVR 720m	850m	RVR 1500m	100	520' (511')	340'-1900m		
B	VIS 800m	1150m	RVR 1500m	135	520' (511')	340'-2800m		
C	800m	1200m	VIS 1600m	180	660' (651')	440'-3700m		
D	900m	1950m	VIS 1600m	205	810' (801')	540'-4600m		

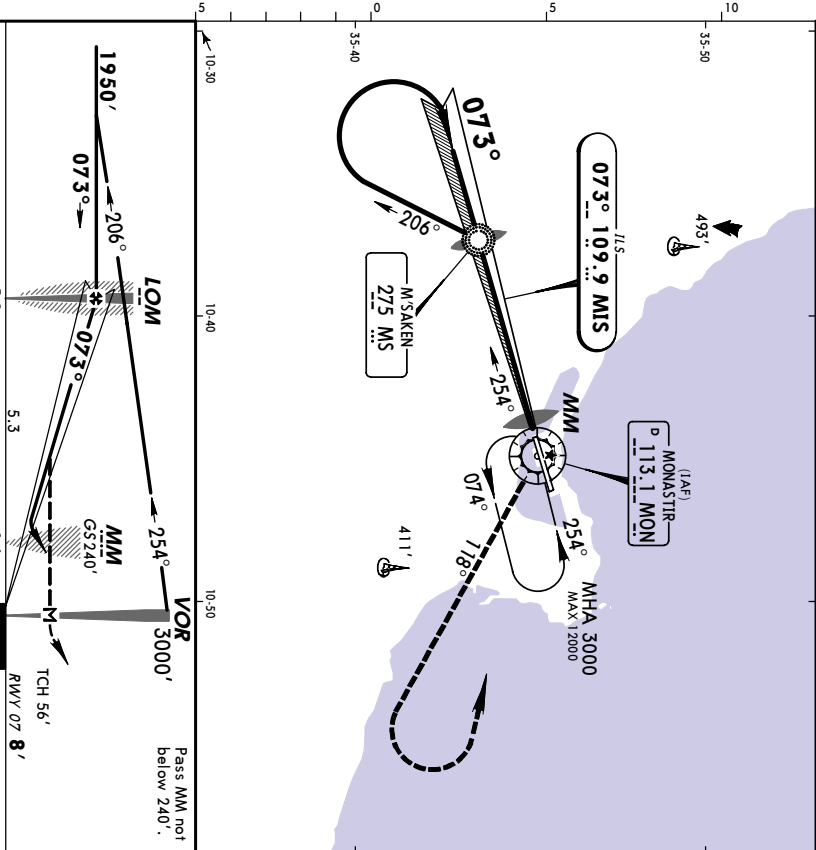
After LOC (GS out) apch without DME: MDA(H) 530' (521')

CHANGES: Trans alt.

© JEPPERSEN SANDERSON, INC., 1999, 2004. ALL RIGHTS RESERVED.

**DTMB/MIR** **JEPPesen** **MONASTIR, TUNISIA**  
**HABIB BOURGUIBA** 2 APR 04 **(1-3) EFF 15 APR** **VOR Lctr ILS Rwy 07**

ATIS		BOURGUIBA Approach		BOURGUIBA Airport (TWR)	
LOC	Final	GS	ILS	Appt Elev	9'
MIS	Apch Crs	LOM	DA(H)	Refer to	RWY
109.9	073°	1950' (1942')	Minimums	8'	
MISSED APCH: Turn RIGHT and follow R-118 MON climbing to 2200', then turn LEFT to join VOR at 3000'.					
Alt Set: hPa			Rwy Elev: 0 hPa		Trans level: By ATC
			Trans alt: 6000'		MSA MON VOR



Gnd speed-Kts		70	90	100	120	140	160	HIALS	
ILS GS 3.00° or		377	485	539	647	755	862	2200' MON	
LOC Desc Grad		5.2%					PAPt		113.1
MAP alt VOR								RT	
								R-118	
STRAGHT-IN LANDING RWY 07								CIRCLE-TO-LAND	
LOC (GS out)								NIGHT: CEIL=MDH	
ILS									
DA(H)		A: 298' (290') C: 318' (310')		MDA(H)		530' (522')			
FULL		ALS out							
RVR 720m		850m						Max	
VIS 800m		1150m						Kts	
1200m		RVR 1500m						MDA(H)	
		VIS 1600m						ALS out	
		180						CEIL-VIS	
		1950m						520' (511') 340'-1900m	
								520' (511') 340'-2800m	
								660' (651') 440'-3700m	
								810' (801') 540'-4600m	

PANS OPS

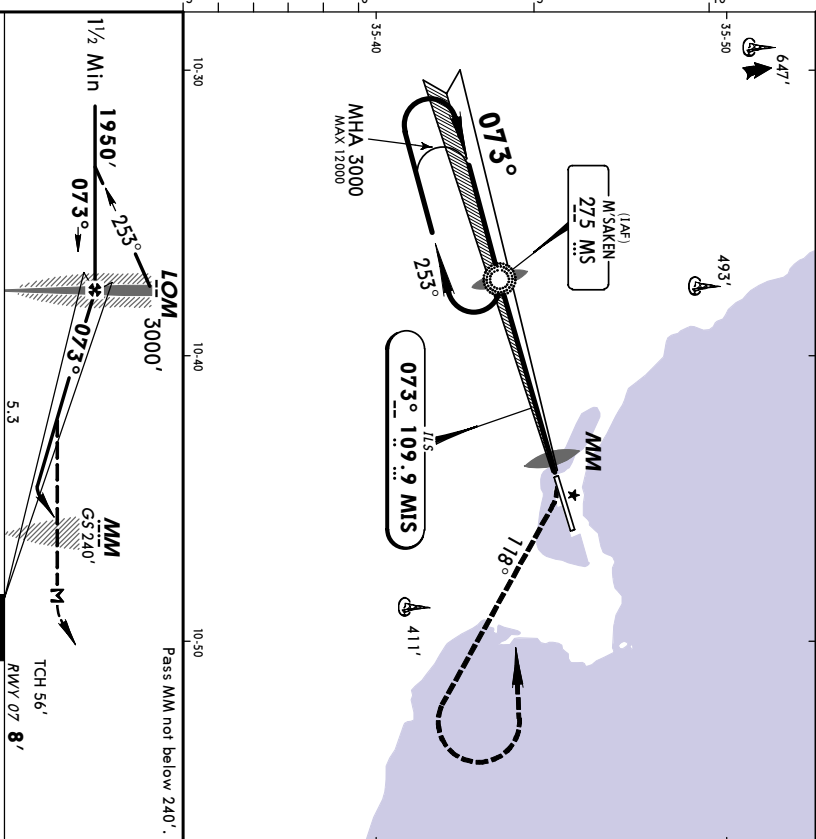
After LOC (GS out) apch: MDA(H) 530' (521').

CHANGES: Trans alt.

© JEPPESEN SANDERSON, INC., 1999, 2004. ALL RIGHTS RESERVED.

**DTMB/MIR** **JEPPesen** **MONASTIR, TUNISIA**  
**HABIB BOURGUIBA** 2 APR 04 **(1-4) EFF 15 APR** **Lctr ILS Rwy 07**

ATIS		BOURGUIBA Approach		BOURGUIBA Airport (TWR)	
LOC	Final	GS	ILS	Appt Elev	9'
MIS	Apch Crs	LOM	DA(H)	Refer to	RWY
109.9	073°	1950' (1942')	Minimums	8'	
MISSED APCH: After passing MM, as soon as possible turn RIGHT onto track 118° climbing to 2000', then turn LEFT to join Lctr at 3000'.					
Alt Set: hPa			Rwy Elev: 0 hPa		Trans level: By ATC
			Trans alt: 6000'		MSA MS Lctr



Gnd speed-Kts		70	90	100	120	140	160	HIALS	
ILS GS 3.00° or		377	485	539	647	755	862	2000' MON	
LOC Desc Grad		5.2%					PAPt		118°
LOM to MAP		5.9	5.03	3.56	3.32	2.57	2.32	RT	
STRAGHT-IN LANDING RWY 07								CIRCLE-TO-LAND	
LOC (GS out)								NIGHT: CEIL=MDH	
ILS									
DA(H)		A: 298' (290') C: 318' (310')		MDA(H)		530' (522')			
FULL		ALS out							
RVR 720m		850m						Max	
VIS 800m		1150m						Kts	
1200m		RVR 1500m						MDA(H)	
		VIS 1600m						ALS out	
		180						CEIL-VIS	
		1950m						520' (511') 340'-1900m	
								520' (511') 340'-2800m	
								660' (651') 440'-3700m	
								810' (801') 540'-4600m	

PANS OPS

After LOC (GS out) apch: MDA(H) 530' (521').

CHANGES: Trans alt.

© JEPPESEN SANDERSON, INC., 1999, 2004. ALL RIGHTS RESERVED.

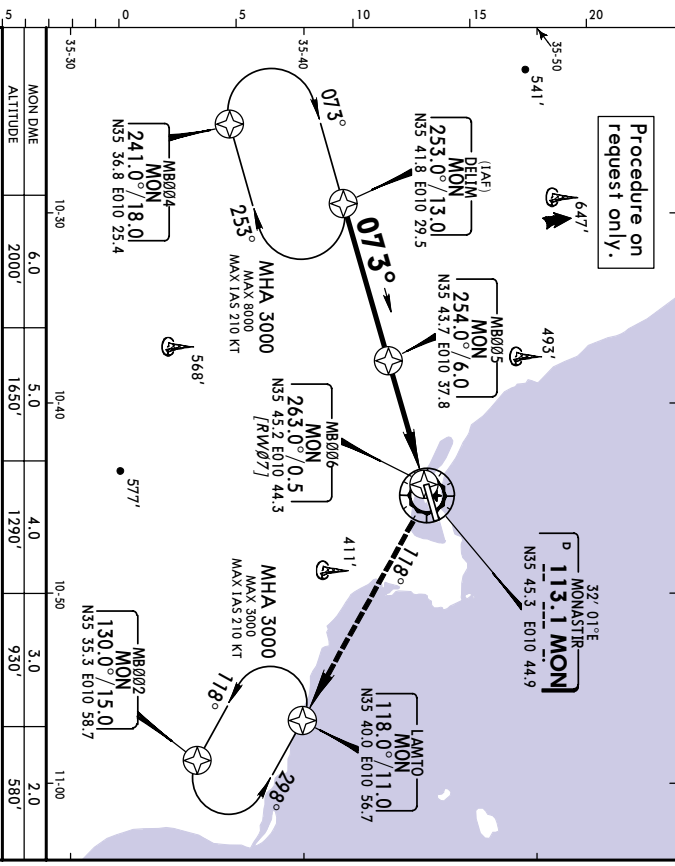
**DTMB/MIR** **JEPPERSEN** **MONASTIR, TUNISIA**  
**HABIB BOURGUIBA** **EFF 15 APR 12-1** **RNAV (VOR DME) Rwy 07**

ATIS	113.1	BORJGUIBA Approach	119.3	BORJGUIBA Airport (TWR)	118.3
VOR	113.1	Final Appch Crs	073°	Minimum Alt	520' (511')
				MDA(H)	520' (511')
				Appt Elev	9'

MISSED APCH: Turn RIGHT to intercept and follow R-118 to join LAMTO holding at 3000', then as directed. MAX IAS 210 KT.

Alt Set: hPa Appt Elev: 0 hPa Trans level: By ATC Trans alt: 6000'

MSA MON VOR 1700'



**PANS OPS**

MON DME	6.0	5.0	4.0	3.0	2.0
ALTITUDE	2000'	1650'	1290'	930'	580'

**DELIM** 3000' -073° -2000' **MBB05** [RW07]

**MBB06** [RW07] 3000'

**APPT 9'**

STRAIGHT-IN LANDING RWY 07

CIRCLE-TO-LAND

NIGHT: CELL=MDH

Grnd speed-Kts	70	90	100	120	140	160	HIAS	210 KT	3000'	MON	113.1	LAMTO
Descent Gradient	5.8%	4.11	5.29	5.87	7.05	8.22	9.40	PART 1	MAX	RT	R-118	
MAP at MBB06												

MDA(H)	520' (511')	ALS out	Max Kts	MDA(H)	CELL-VIS
			100	520' (511')	340'-1900m
			135	520' (511')	340'-2800m
			180	660' (651')	440'-3700m
			205	810' (801')	540'-4600m

CHANGES: Trans alt.

© JEPPERSEN SANDERSON, INC., 2000, 2004. ALL RIGHTS RESERVED.

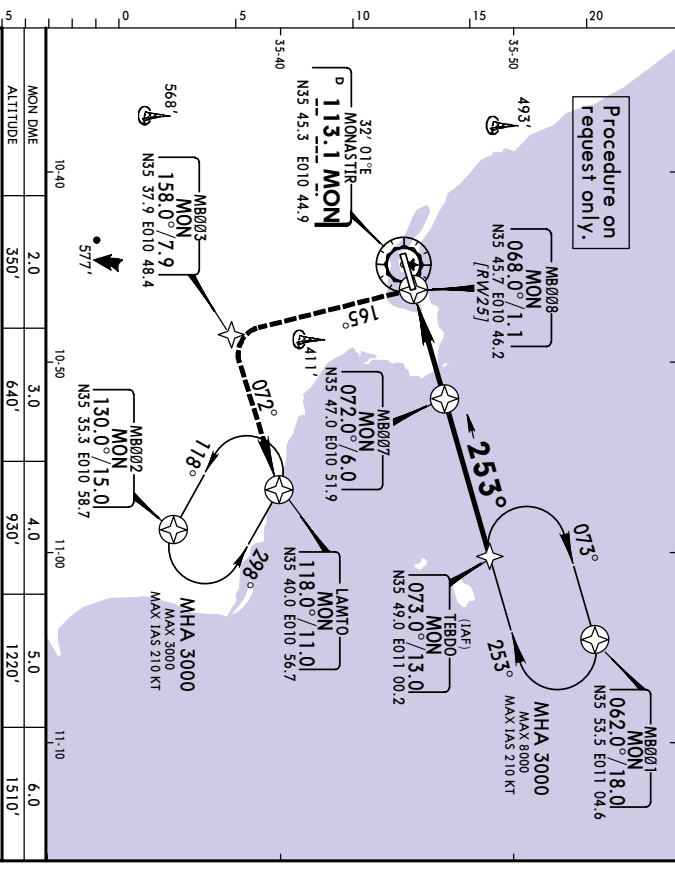
**DTMB/MIR** **JEPPERSEN** **MONASTIR, TUNISIA**  
**HABIB BOURGUIBA** **EFF 15 APR 12-2** **RNAV (VOR DME) Rwy 25**

ATIS	113.1	BORJGUIBA Approach	119.3	BORJGUIBA Airport (TWR)	118.3
VOR	113.1	Final Appch Crs	253°	Minimum Alt	470' (461')
				MDA(H)	470' (461')
				Appt Elev	9'

MISSED APCH: Turn LEFT to MBB03 and join LAMTO holding at 3000', then as directed. MAX IAS 210 KT.

Alt Set: hPa Appt Elev: 0 hPa Trans level: By ATC Trans alt: 6000'

MSA MON VOR 1700'



**PANS OPS**

MON DME	2.0	3.0	4.0	5.0	6.0
ALTITUDE	350'	640'	930'	1220'	1510'

**DELIM** 3000' -073° -253° **TEBDO**

**MBB08** [RW25]

**MBB07** 1500'

**APPT 9'**

STRAIGHT-IN LANDING RWY 25

CIRCLE-TO-LAND

NIGHT: CELL=MDH

Grnd speed-Kts	70	90	100	120	140	160	HIAS	210 KT	MBB03
Descent Gradient	4.9%	3.47	4.47	4.96	5.95	6.95	7.94	PART 1	MAX
MAP at MBB08									

MDA(H)	470' (461')	ALS out	Max Kts	MDA(H)	CELL-VIS
			100	520' (511')	340'-1900m
			135	520' (511')	340'-2800m
			180	660' (651')	440'-3700m
			205	810' (801')	540'-4600m

CHANGES: Trans alt.

© JEPPERSEN SANDERSON, INC., 2000, 2004. ALL RIGHTS RESERVED.





**DTMB/MIR**  
**HABIB BOURGUIBA**

**DTMB/MIR**  
**HABIB BOURGUIBA**

2 APR 04 **(13-3)** **EFF 15 APR** **MONASTIR, TUNISIA**  
**Lctr VOR Rwy 07**

2 APR 04 **(13-4)** **EFF 15 APR** **MONASTIR, TUNISIA**  
**VOR Rwy 07**

ATIS		BOURGUIBA Approach		BOURGUIBA Airport (TWR)	
113.1		119.3		118.3	
VOR MON	Final Appch Crs	Minimum Alt	MDA(H)	Appt Elev	
113.1	074°	2000' (1991')	520' (511')	9'	

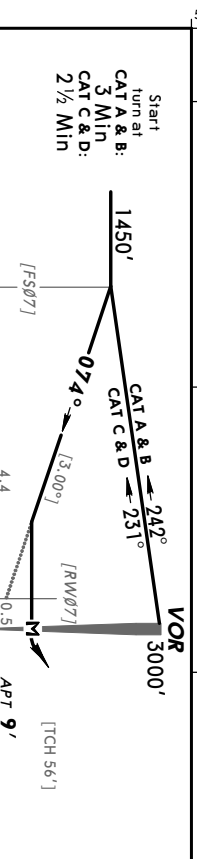
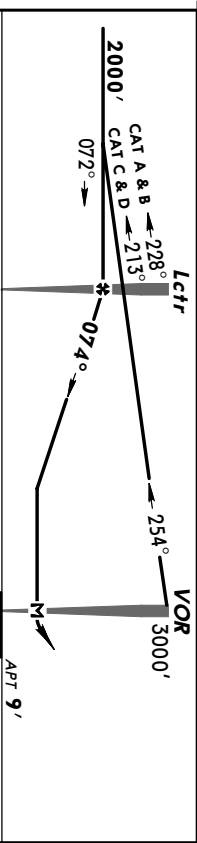
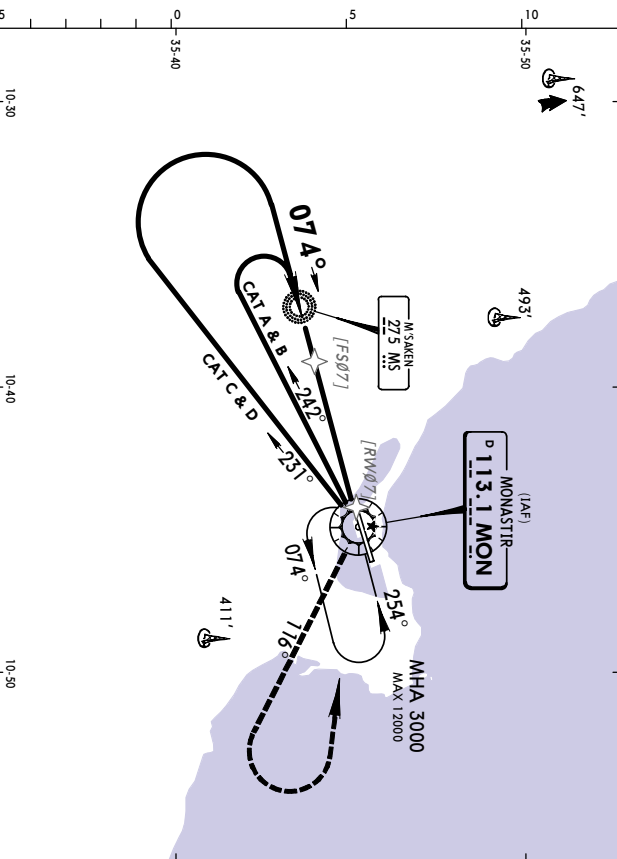
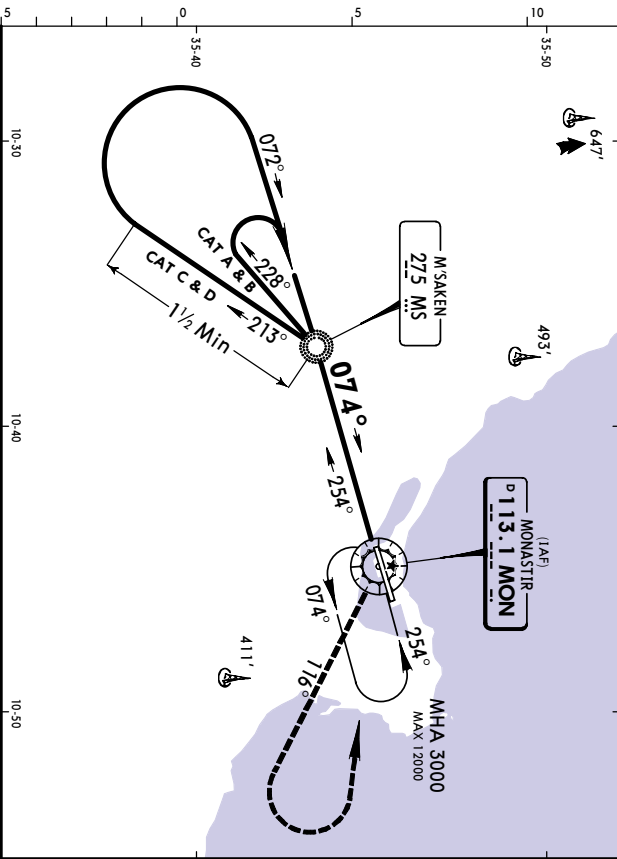
ATIS		BOURGUIBA Approach		BOURGUIBA Airport (TWR)	
113.1		119.3		118.3	
VOR MON	Final Appch Crs	Minimum Alt	MDA(H)	Appt Elev	
113.1	074°	No FAF	750' (741')	9'	

MISSED APCH: Turn RIGHT and follow R-116 climbing to 2200', then turn LEFT to join VOR at 3000'.

MISSED APCH: Turn RIGHT onto R-116 climbing to 2200', then turn LEFT to join VOR at 3000'.

Alt Set: hPa Appt Elev: 0 hPa Trans level: By ATC Trans alti: 6000' MSA MON VOR

Alt Set: hPa Appt Elev: 0 hPa Trans level: By ATC Trans alti: 6000' MSA MON VOR



Grnd speed-Kts	70	90	100	120	140	160
Descent Gradient	5.4%	383	492	547	656	875
MAP at VOR						

Grnd speed-Kts	70	90	100	120	140	160
Descent angle	3.00°	372	478	531	637	849
MAP at VOR						

STRAIGHT-IN LANDING RWY 07  
CIRCLE-TO-LAND  
NIGHT: CEIL=M DH

STRAIGHT-IN LANDING RWY 07  
CIRCLE-TO-LAND  
NIGHT: CEIL=M DH

ALS out		ALS out	
MDA(H)	520' (511')	Max Kts	100
		MDA(H)	520' (511')
		CEL-VIS	340'-1900m
A	850m		
B	1150m	RVR 1500m	340'-2800m
C	1450m	VIS 1600m	340'-2800m
D	1950m		440'-3700m
			810' (801')
			540'-4600m

ALS out		ALS out	
MDA(H)	750' (741')	Max Kts	100
		MDA(H)	750' (741')
		CEL-VIS	340'-1900m
A	1300m		
B	1700m	RVR 1500m	340'-2800m
C	2150m	VIS 1600m	340'-2800m
D	2800m		440'-3700m
			810' (801')
			540'-4600m

**DTMB/MIR**  
**HABIB BOURGUIBA**

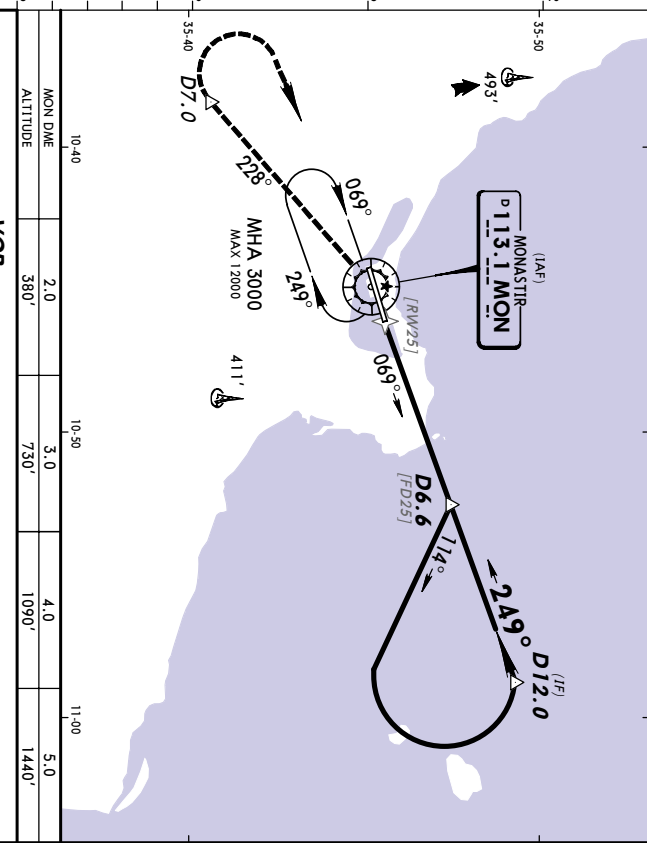
2 APR 04 **(13-5)** **EFF 15 APR**

**MONASTIR, TUNISIA**  
**VOR DME Rwy 25**

ATIS	113.1	BOURGUIBA Approach	119.3	BOURGUIBA Airport (TWR)	118.3
VOR MON	113.1	Final Appch Crs	249°	Minimum Alt D6.6	470' (461')
		Apch Crs	2000' (1991')	MDA (H)	470' (461')
				Appt Elev	9'

**MISSED APCH:** Turn LEFT to intercept and follow R-228 climbing to D7.0, then turn RIGHT to join VOR at 3000'.

Alt Set: hPa Appt Elev: 0 hPa Trans level: By ATC Trans alt: 6000' MSA MON VOR



MON DME	2.0	3.0	4.0	5.0
ALTITUDE	380'	730'	1090'	1440'

Grnd speed-Kts	70	90	100	120	140	160
Descent Gradient	5.80% or [3.32°]	411	529	587	705	822
MAP at VOR						

MAP at VOR STRAIGHT-IN LANDING RWY 25

MDA(H) **470' (461')** PAPI-L **R-228** MON **113.1** D7.0

Circle-to-land: NIGHT: CEIL=M/DH

A	RVR 1500m VIS 1600m	Max Kts	100	MDA(H)	520' (511')	CEIL-VIS	340'-1900m
B	1700m	135	520' (511')	340'-2800m			
C	2000m	180	660' (651')	440'-3700m			
D	2450m	205	810' (801')	540'-4600m			

**DTMB/MIR**  
**HABIB BOURGUIBA**

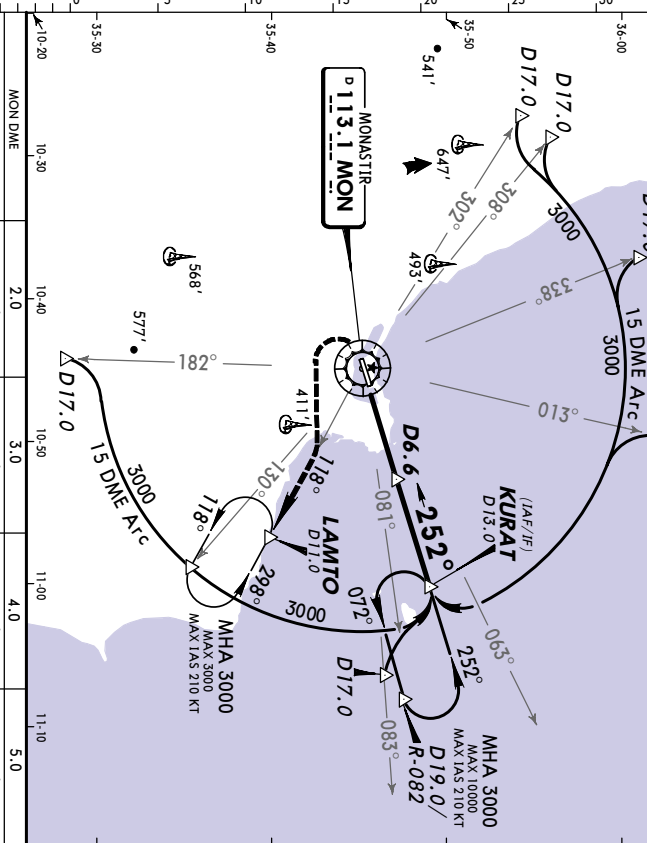
2 APR 04 **(13-6)** **EFF 15 APR**

**MONASTIR, TUNISIA**  
**VOR DME Rwy 25**

ATIS	113.1	BOURGUIBA Approach	119.3	BOURGUIBA Airport (TWR)	118.3
VOR MON	113.1	Final Appch Crs	252°	Minimum Alt D6.6	470' (461')
		Apch Crs	2000' (1991')	MDA (H)	470' (461')
				Appt Elev	9'

**MISSED APCH:** Turn LEFT to intercept and follow R-118 to join LAMTO holding at 3000', then as directed. MAX IAS 210 KT.

Alt Set: hPa Appt Elev: 0 hPa Trans level: By ATC Trans alt: 6000' MSA MON VOR



MON DME	2.0	3.0	4.0	5.0
ALTITUDE	380'	730'	1090'	1440'

Grnd speed-Kts	70	90	100	120	140	160
Descent Gradient	5.8%	411	529	588	705	823
MAP at VOR						

MAP at VOR STRAIGHT-IN LANDING RWY 25

MDA(H) **470' (461')** PAPI-L **R-118** MON **113.1** LAMTO

Circle-to-land: NIGHT: CEIL=M/DH

A	RVR 1500m VIS 1600m	Max Kts	100	MDA(H)	520' (511')	CEIL-VIS	340'-1900m
B	1700m	135	520' (511')	340'-2800m			
C	2000m	180	660' (651')	440'-3700m			
D	2450m	205	810' (801')	540'-4600m			

**DTMB/MIR**  
**HABIB BOURGUIBA**

**DTMB/MIR**  
**HABIB BOURGUIBA**

2 APR 04 **(3-7)** **EFF 15 APR**

**MONASTIR, TUNISIA**  
**VOR Rwy 25**

2 APR 04 **(6-1)** **EFF 15 APR**

**MONASTIR, TUNISIA**  
**Lctr Rwy 07**

ATIS		BOURGUIBA Approach		BOURGUIBA Airport (TWR)	
113.1		119.3		118.3	
VOR	Final	Minimum Alt	MDA(H)	Apt Elev	9'
MON	Appch Crs	No FAF	520' (511')		
113.1	250°				

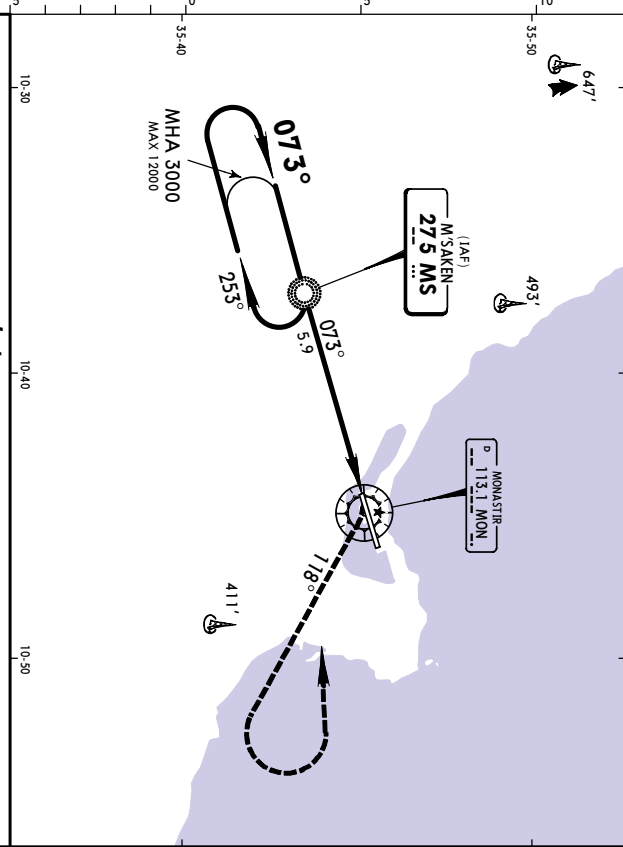
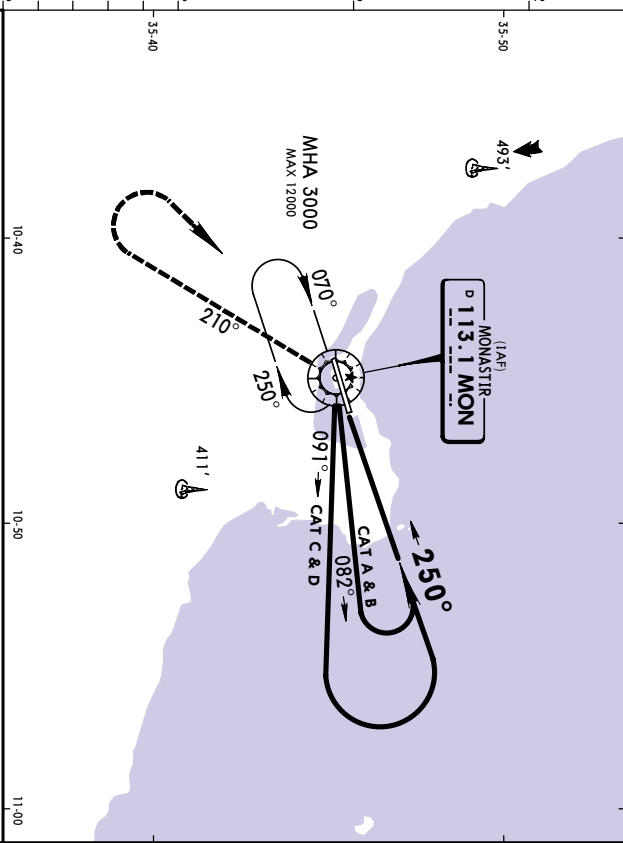
ATIS		BOURGUIBA Approach		BOURGUIBA Airport (TWR)	
113.1		119.3		118.3	
Lctr	Final	Minimum Alt	MDA(H)	Apt Elev	9'
MS	Appch Crs	Lctr	600' (591')		
275	073°	1950' (1941')			

MISSED APCH: Turn LEFT and follow R-210 climbing to 2000', then turn RIGHT to join VOR at 3000'.

MISSED APCH: Turn RIGHT onto track 118° climbing to 2500', then turn LEFT to join Lctr at 3000', or as directed.

Alt Set: hPa Apt Elev: 0 hPa Trans level: By ATC Trans alt: 6000' MSA MON VOR

Alt Set: hPa Apt Elev: 0 hPa Trans level: By ATC Trans alt: 6000' MSA MS Lctr



MAP at VOR		PAPER		MON	
STRAIGHT-IN LANDING RWY 25		CIRCLE-TO-LAND		NIGHT: CELL=MDH	
MDA(H) 520' (511')		Max Kts		2000'	
RVR 1500m VIS 1600m		MDA(H)		113.1	
		CELL-VIS		R-210	
		PAPER		LT	
		RVR 1500m VIS 1600m		R-210	

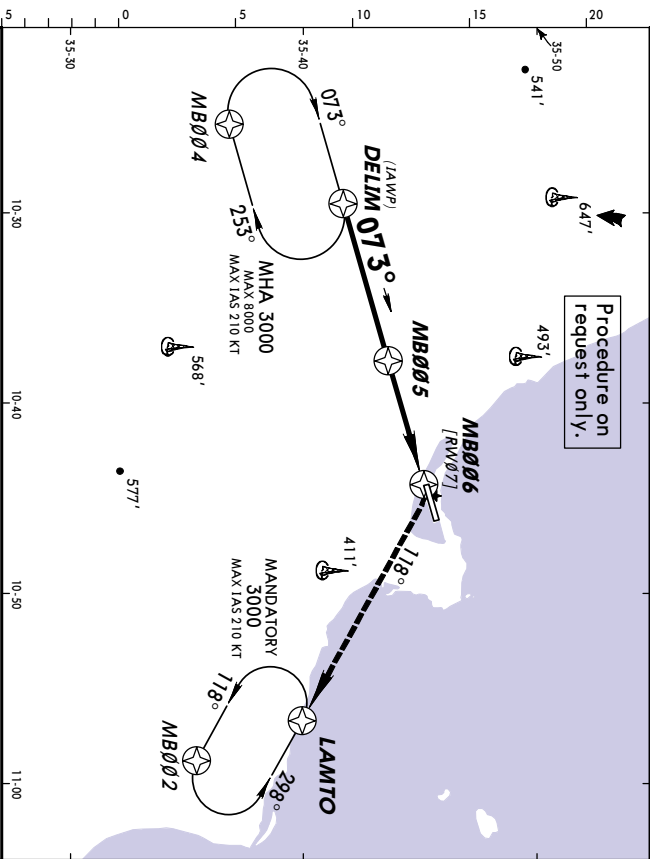
MAP at VOR		PAPER		MON	
STRAIGHT-IN LANDING RWY 07		CIRCLE-TO-LAND		NIGHT: CELL=MDH	
MDA(H) 600' (591')		Max Kts		2500'	
RVR 1500m VIS 1600m		MDA(H)		118°	
		CELL-VIS		RT	
		PAPER		LT	
		RVR 1500m VIS 1600m		R-210	

PANS OPS		PANS OPS	
A	520' (511')	70	160
B	1850m	90	120
C	2150m	100	140
D	2650m	120	160

PANS OPS		PANS OPS	
A	520' (511')	70	160
B	1850m	90	120
C	2150m	100	140
D	2650m	120	160

**DTMB/MIR**  
**HABIB BOURGUIBA**  
 2 APR 04 **(18-1)** **EFF 15 APR**  
**MONASTIR, TUNISIA**  
**GPS Rwy 07**

ATIS	113.1	BORJGUIBA Approach	119.3	BORJGUIBA Airport (TWR)	118.3
GPS	Final Aptch Crs <b>073°</b>	Minimum Alt <b>MB005</b> 2000' (1991')	MDA(H) <b>520'</b> (511')	Apt Elev <b>9'</b>	
MISSED APCH: Turn RIGHT to join LAMTO holding at 3000', then as directed. MAX IAS 210 KT.					
Alt Set: hPa	Apt Elev: 0 hPa	Trans level: By ATIS	Trans alt: 6000'		
					MSA ARP



Grnd speed-Kts	70	90	100	120	140	160							
Descent Gradient: 5.8%	411	529	587	705	822	940							
MAP at MB006													
STRAIGHT-IN LANDING RWY 07													
CIRCLE-TO-LAND													
NIGHT: CEIL=MDH													
MAX KTS													
MDA(H) <b>520'</b> (511')													
ALS OUT													
RVR 1500m VIS 1600m													
HIALS													
PART 1 <b>210 KT</b>													
PART 2 <b>3000'</b>													
HOLDING PATTERN													

A	1400m	1700m	2000m	2450m
B				
C				
D				

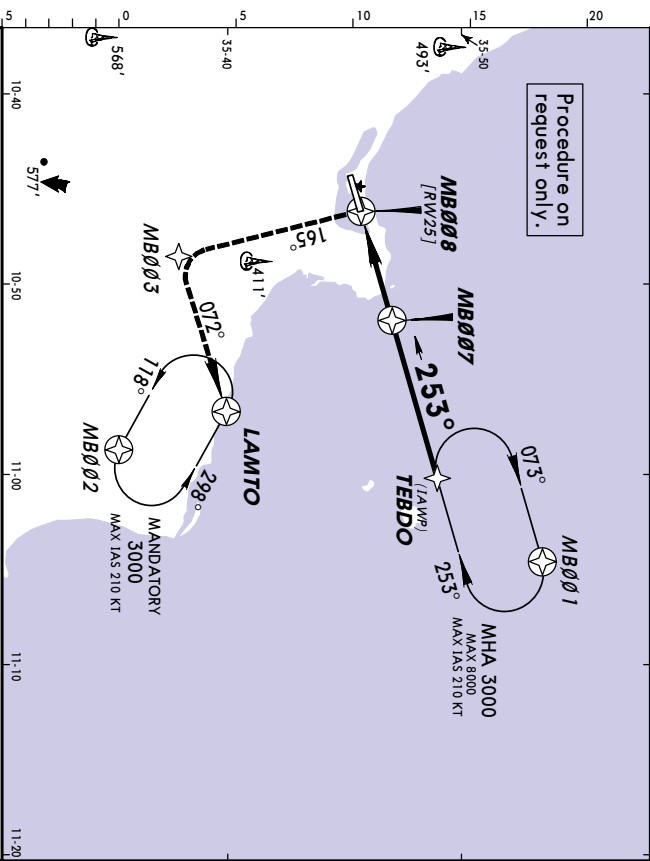
PANS OPS

CHANGES: Trans alt.

© JEPPESEN SANDERSON, INC., 2001, 2004. ALL RIGHTS RESERVED.

**DTMB/MIR**  
**HABIB BOURGUIBA**  
 2 APR 04 **(18-2)** **EFF 15 APR**  
**MONASTIR, TUNISIA**  
**GPS Rwy 25**

ATIS	113.1	BORJGUIBA Approach	119.3	BORJGUIBA Airport (TWR)	118.3
GPS	Final Aptch Crs <b>253°</b>	Minimum Alt <b>MB007</b> 1500' (1491')	MDA(H) <b>470'</b> (461')	Apt Elev <b>9'</b>	
MISSED APCH: Turn LEFT to MB003 and join LAMTO holding at 3000', then as directed. MAX IAS 210 KT.					
Alt Set: hPa	Apt Elev: 0 hPa	Trans level: By ATIS	Trans alt: 6000'		
					MSA ARP



Grnd speed-Kts	70	90	100	120	140	160						
Descent Gradient: 4.9%	347	447	496	595	695	794						
MAP at MB008												
STRAIGHT-IN LANDING RWY 25												
CIRCLE-TO-LAND												
NIGHT: CEIL=MDH												
MAX KTS												
MDA(H) <b>470'</b> (461')												
RVR 1500m VIS 1600m												
HIALS												
PART 1 <b>210 KT</b>												
PART 2 <b>3000'</b>												
HOLDING PATTERN												

A	1400m	1700m	2000m	2450m
B				
C				
D				

PANS OPS

CHANGES: Trans alt.

© JEPPESEN SANDERSON, INC., 2001, 2004. ALL RIGHTS RESERVED.