

AERODROME / CHART - ICAO

315821.73194 N
355929.65800 E

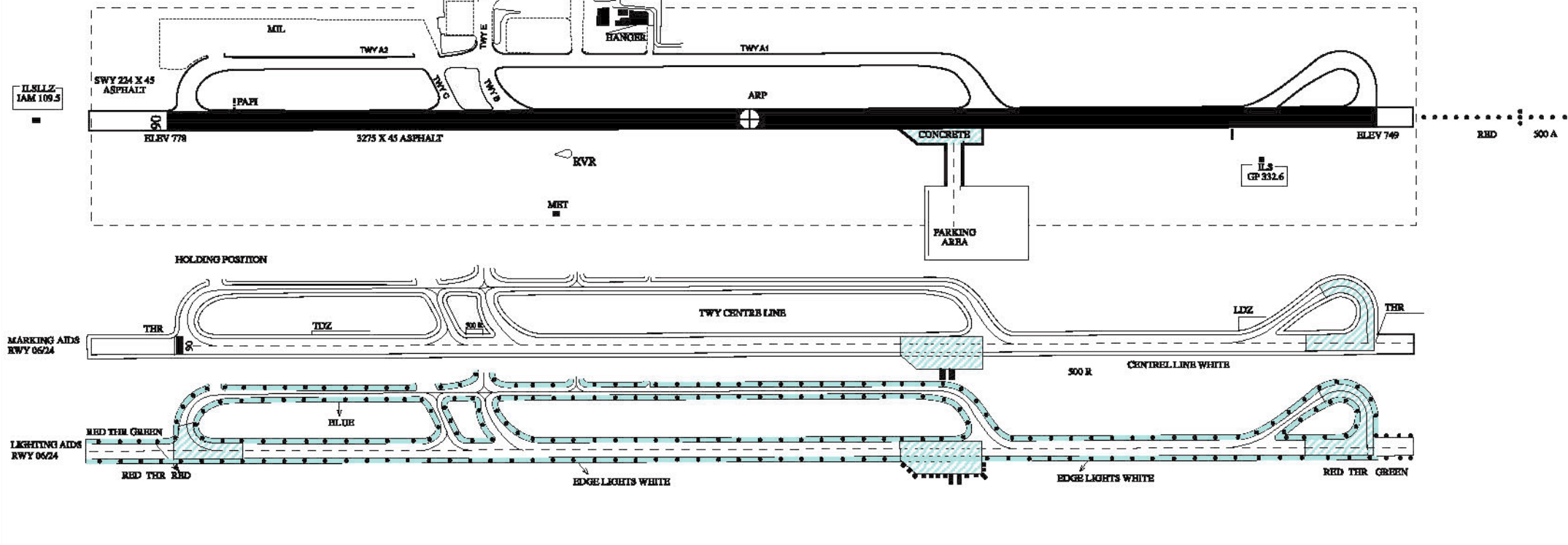
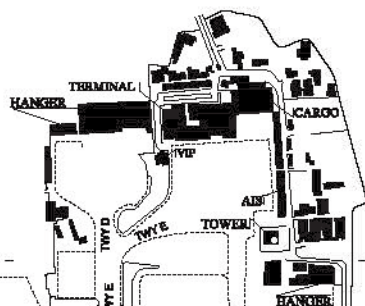
ELEV 779 M
(2556 FT)

TWR 118.1
APRON 121.7

AMMAN / MARKA
(OJAM)

RWY	DIRECTION	THR	BEARING STRENGTH
24	240°	31 57 58.5 N	PCN/55/F/C/W/U Asphalt Flexible
		35 58 33.5 E	
06	060°	31 58 44.9 N	
		36 00 25.8 E	

ELEVATIONS AND DIMENSIONS IN METERS
BEARINGS ARE MAGNETIC



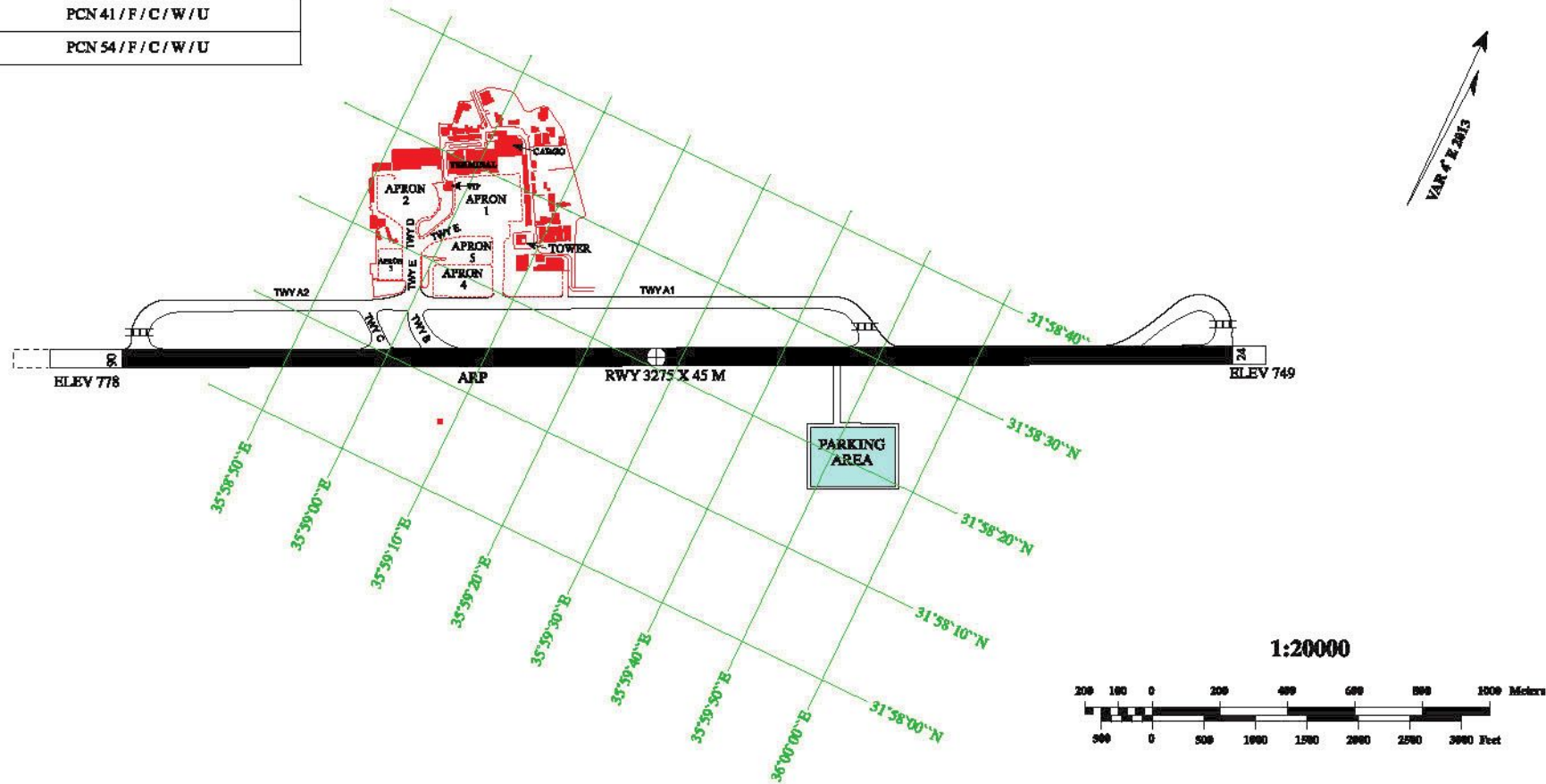
**AERODROME GROUND
MOVEMENT CHART - ICAO**

TWR 118.1
APRON 121.7

AMMAN / MARKA
(OJAM)

TWY	BEARING STRENGTH
A	PCN 55 / F / C / W / U
B, C	PCN 41 / F / C / W / U
D, E, F	PCN 54 / F / C / W / U

ELEVATIONS IN METERS
BEARINGS ARE MAGNETIC



STANDARD DEPARTURE
CHART-INSTRUMENT
(SID) - ICAO

AD ELEV 2556 FT
Trans Alt 13000
Trans Level FL 150

ATIS 127.600
APP 128.900
TWR 118.100

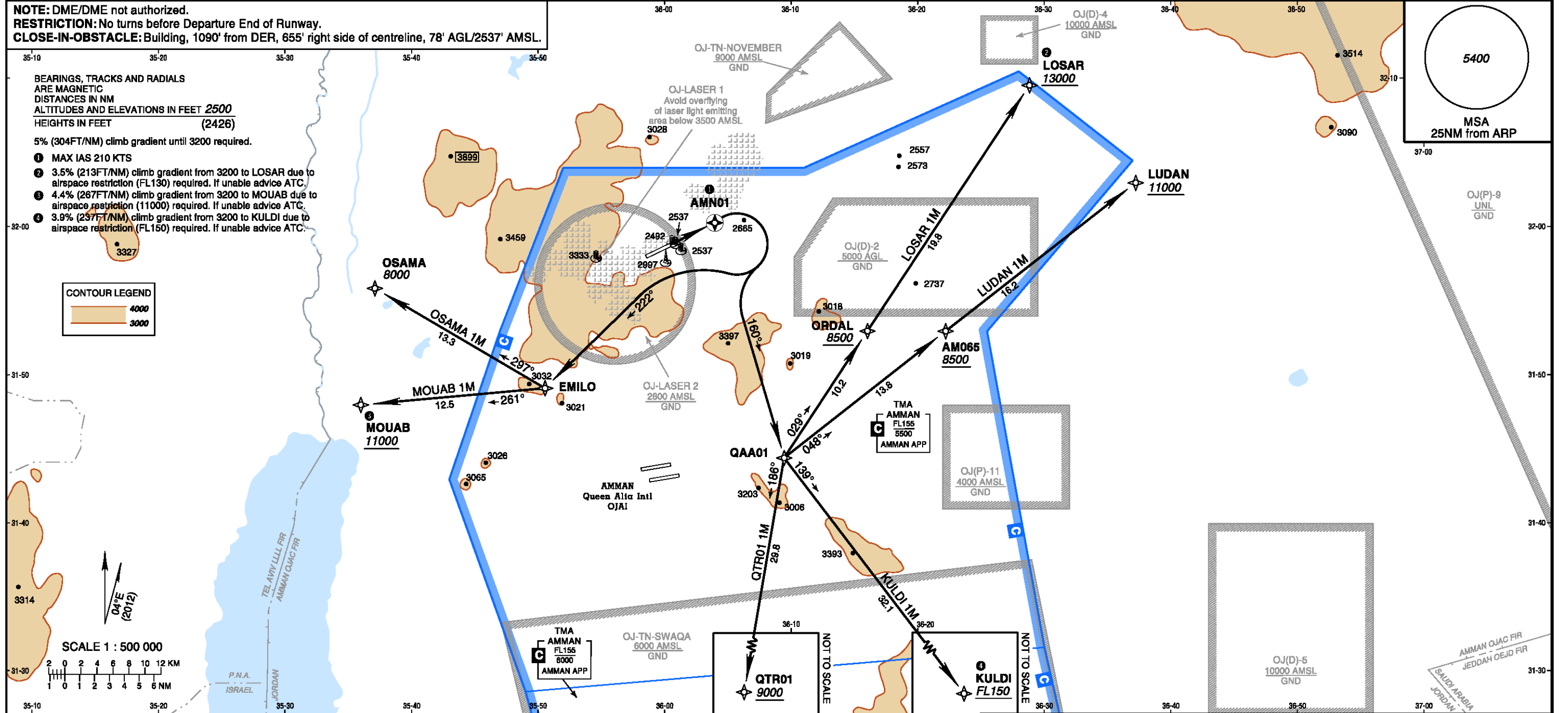
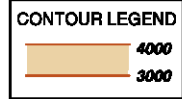
AMMAN/Marka Intl (OJAM)
SID RNAV (GNSS) RWY 06

LOSAR 1M, LUDAN 1M, KULDI 1M, QTR01 1M, MOUAB 1M, OSAMA 1M RNAV (GNSS) DEPARTURE

NOTE: DME/DME not authorized.
RESTRICTION: No turns before Departure End of Runway.
CLOSE-IN-OBSTACLE: Building, 1090' from DER, 655' right side of centreline, 78' AGL/2537' AMSL.

BEARINGS, TRACKS AND RADIALS
ARE MAGNETIC
DISTANCES IN NM
ALTITUDES AND ELEVATIONS IN FEET 2500
HEIGHTS IN FEET (2426)

- 5% (304FT/NM) climb gradient until 3200 required.
- 1 MAX IAS 210 KTS
 - 2 3.5% (213FT/NM) climb gradient from 3200 to LOSAR due to airspace restriction (FL130) required. If unable advice ATC.
 - 3 4.4% (267FT/NM) climb gradient from 3200 to MOUAB due to airspace restriction (11000) required. If unable advice ATC.
 - 4 3.9% (237FT/NM) climb gradient from 3200 to KULDI due to airspace restriction (FL150) required. If unable advice ATC.



INITIAL CLIMB

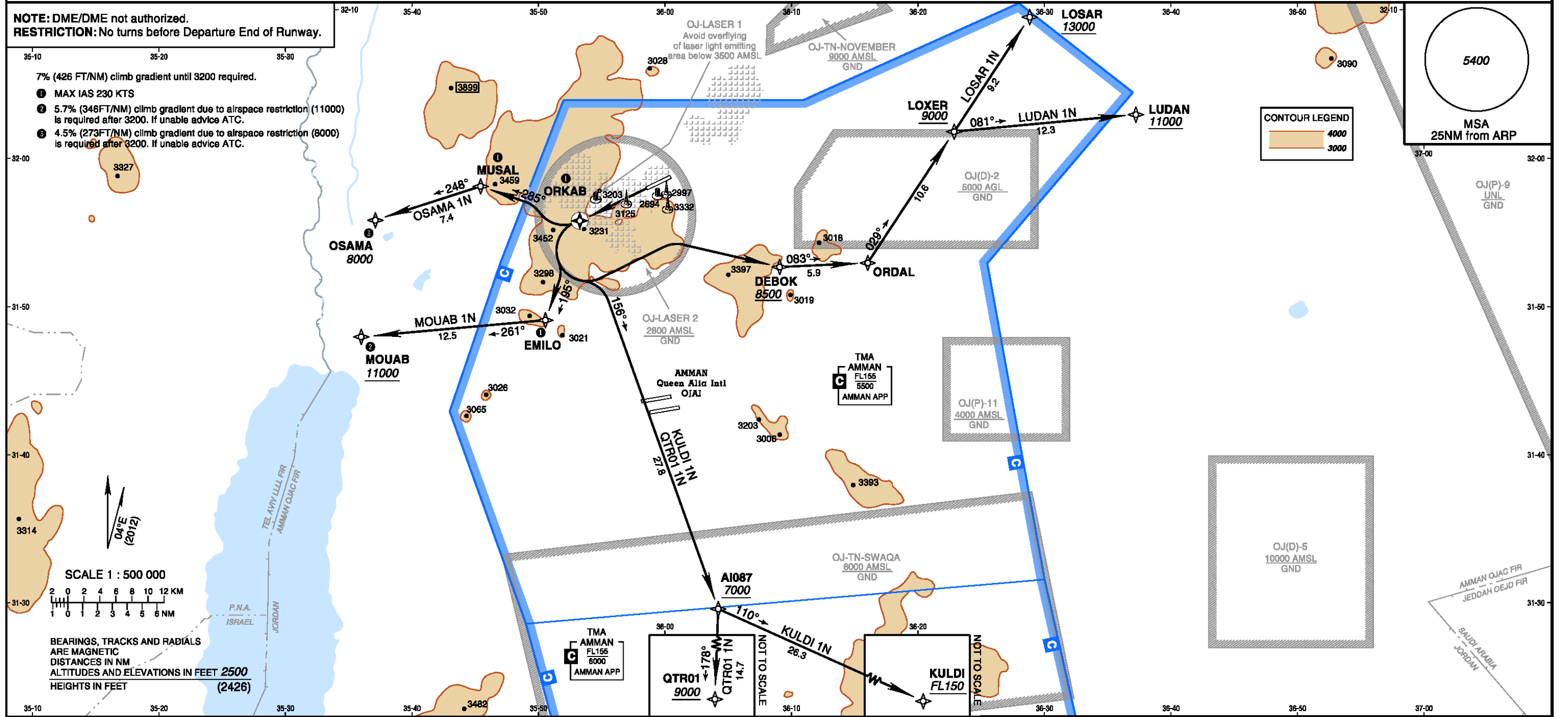
AMN01	Climb direct to AMN01, then
TRANSITION	
ROUTING	
LOSAR 1M	RIGHT turn on track 160° to QAA01, then LEFT turn on track 029° to ORDAL, cross ORDAL at or above 8500, then proceed on track 029° to LOSAR, cross LOSAR at or above 13000.
LUDAN 1M	RIGHT turn on track 160° to QAA01, then LEFT turn on track 048° to AM065, cross AM065 at or above 8500, then proceed on track 048° to LUDAN, cross LUDAN at or above 11000.
KULDI 1M	RIGHT turn on track 160° to QAA01, then LEFT turn on track 139° to KULDI, cross KULDI at or above FL150.
QTR01 1M	RIGHT turn on track 160° to QAA01, then RIGHT turn on track 186° to QTR01, cross QTR01 at or above 9000.
MOUAB 1M	RIGHT turn on track 222° to EMILO, then RIGHT turn on track 261° to MOUAB, cross MOUAB at or above 11000.
OSAMA 1M	RIGHT turn on track 222° to EMILO, then RIGHT turn on track 297° to OSAMA, cross OSAMA at 8000.

STANDARD DEPARTURE AD ELEV 2556 FT
CHART-INSTRUMENT Trans Alt 13000
(SID) - ICAO Trans Level FL 150

ATIS 127.600
APP 128.900
TWR 118.100

AMMAN/Marka Intl (OJAM)
SID RNAV (GNSS) RWY 24

LOSAR 1N, LUDAN 1N, KULDI 1N, QTR01 1N, MOUAB 1N, OSAMA 1N RNAV (GNSS) DEPARTURE



INITIAL CLIMB

ORKAB	Climb direct to ORKAB, then
TRANSITION	
ROUTING	
LOSAR 1N	LEFT turn direct to DEBOK, cross DEBOK at or above 8500, then on track 083° to ORDAL, then LEFT turn on track 029° to LOXER, cross LOXER at or above 9000, then proceed on track 029° to LOSAR, cross LOSAR at or above 13000.
LUDAN 1N	LEFT turn direct to DEBOK, cross DEBOK at or above 8500, then on track 083° to ORDAL, then LEFT turn on track 029° to LOXER, cross LOXER at or above 9000, then RIGHT turn on track 081° to LUDAN, cross LUDAN at or above 11000.
KULDI 1N	LEFT turn on track 156° to AI087, cross AI087 at or above 7000, then LEFT turn on track 110° to KULDI, cross KULDI at or above FL150.
QTR01 1N	LEFT turn on track 156° to AI087, cross AI087 at or above 7000, then RIGHT turn on track 178° to QTR01, cross QTR01 at or above 9000.
MOUAB 1N	LEFT turn on track 195° to EMILO, then RIGHT turn on track 261° to MOUAB, cross MOUAB at or above 11000.
OSAMA 1N	RIGHT turn on track 285° to MUSAL, then LEFT turn on track 248° to OSAMA, cross OSAMA at 8000.

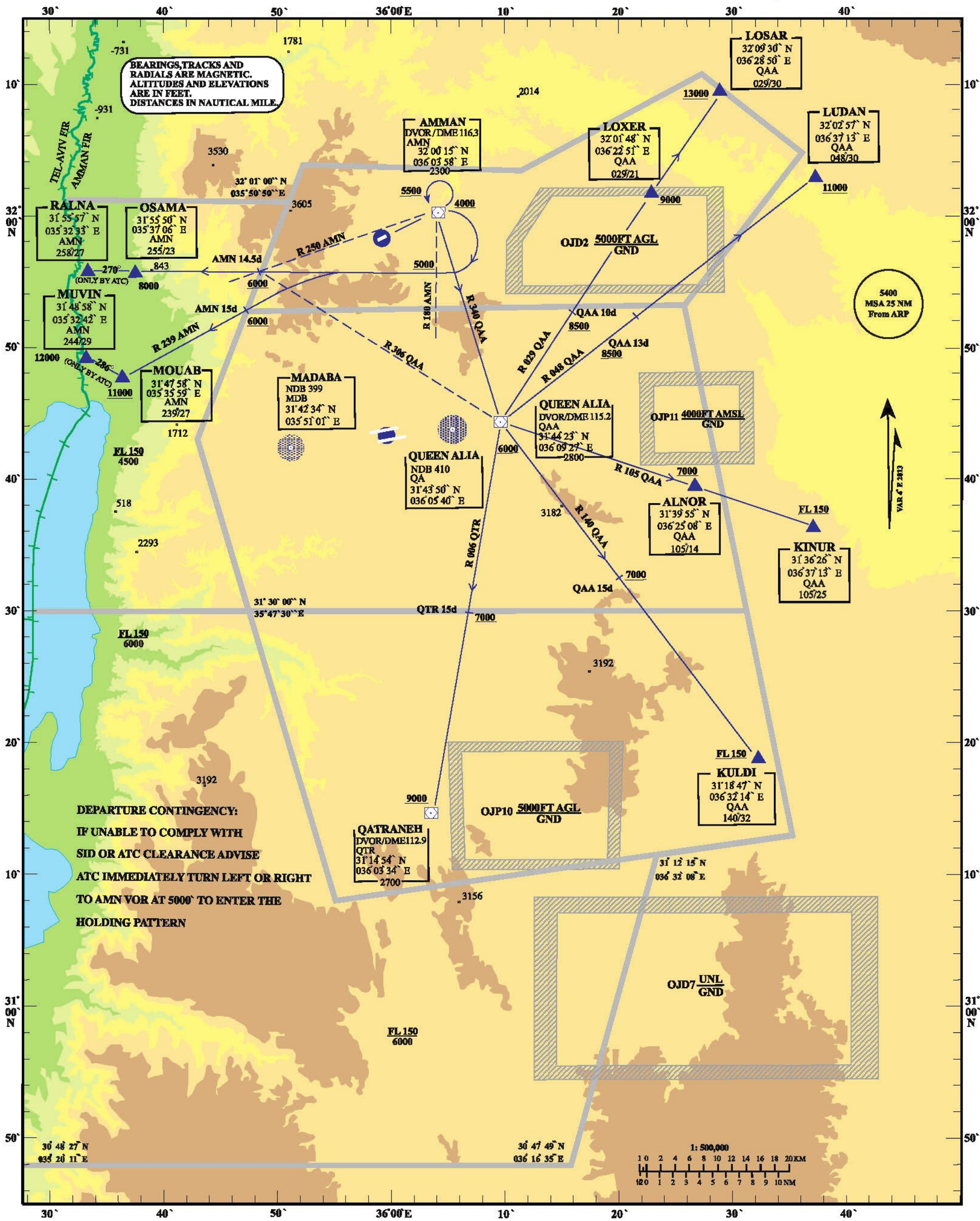
STANDARD DEPARTURE CHART INSTRUMENT (SID) - ICAO

TRANSITION ALTITUDE 13000FT

TWR 118.1 APP 128.9

AMMAN / MARKA (OJAM) RWY 06

KINUR 5D QTR 5D LUDAN 5D LOSAR 5D RALNA 5D MUVIN 5D



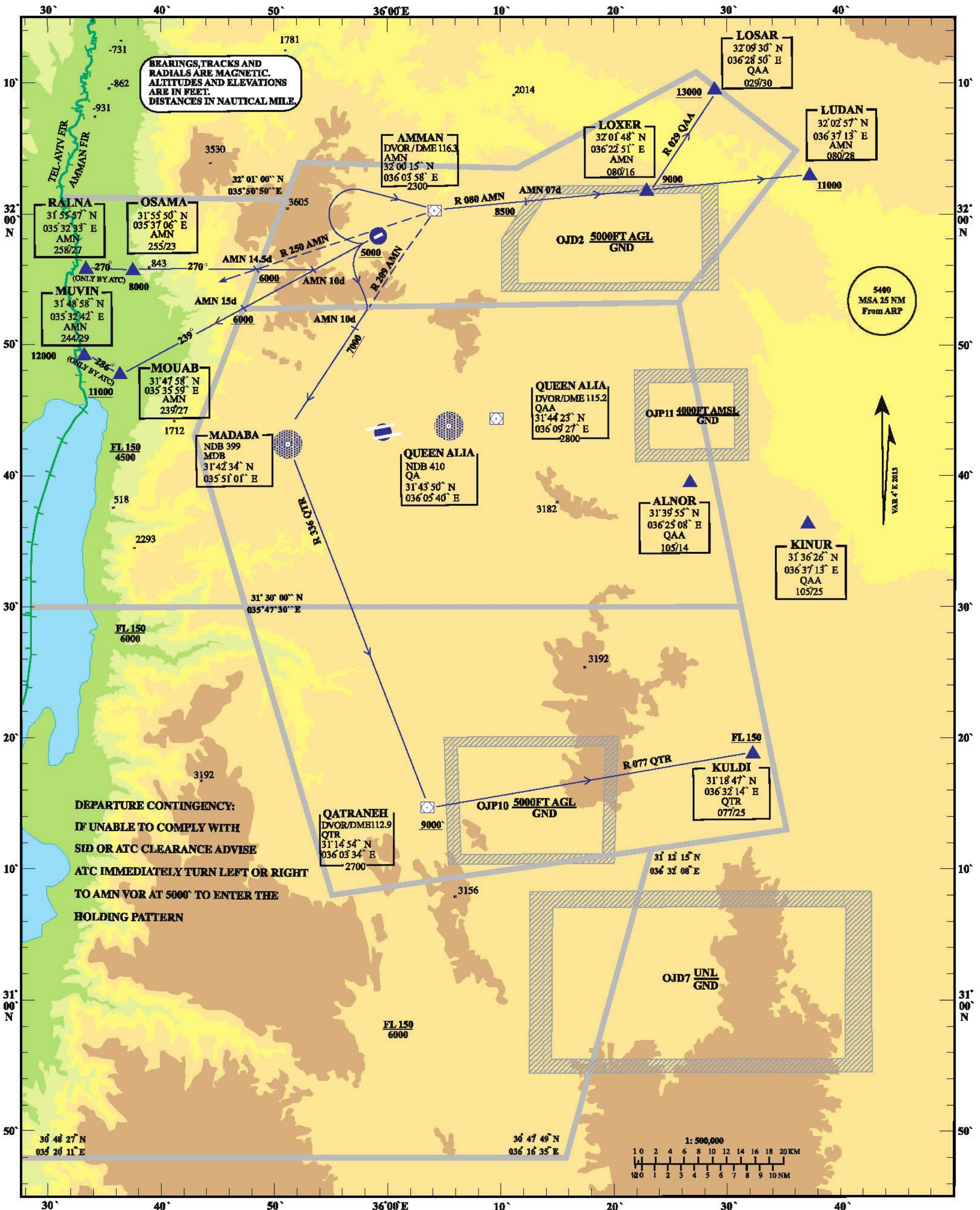
STANDARD DEPARTURE CHART
INSTRUMENT (SID) - ICAO

TRANSITION ALTITUDE
13000FT

TWR 118.1
APP 128.9

AMMAN / MARKA
(OJAM) RWY 24

KULDI 4D QTR 4D
LUDAN 4D LOSAR 4D
RALNA 4D MUVIN 4D



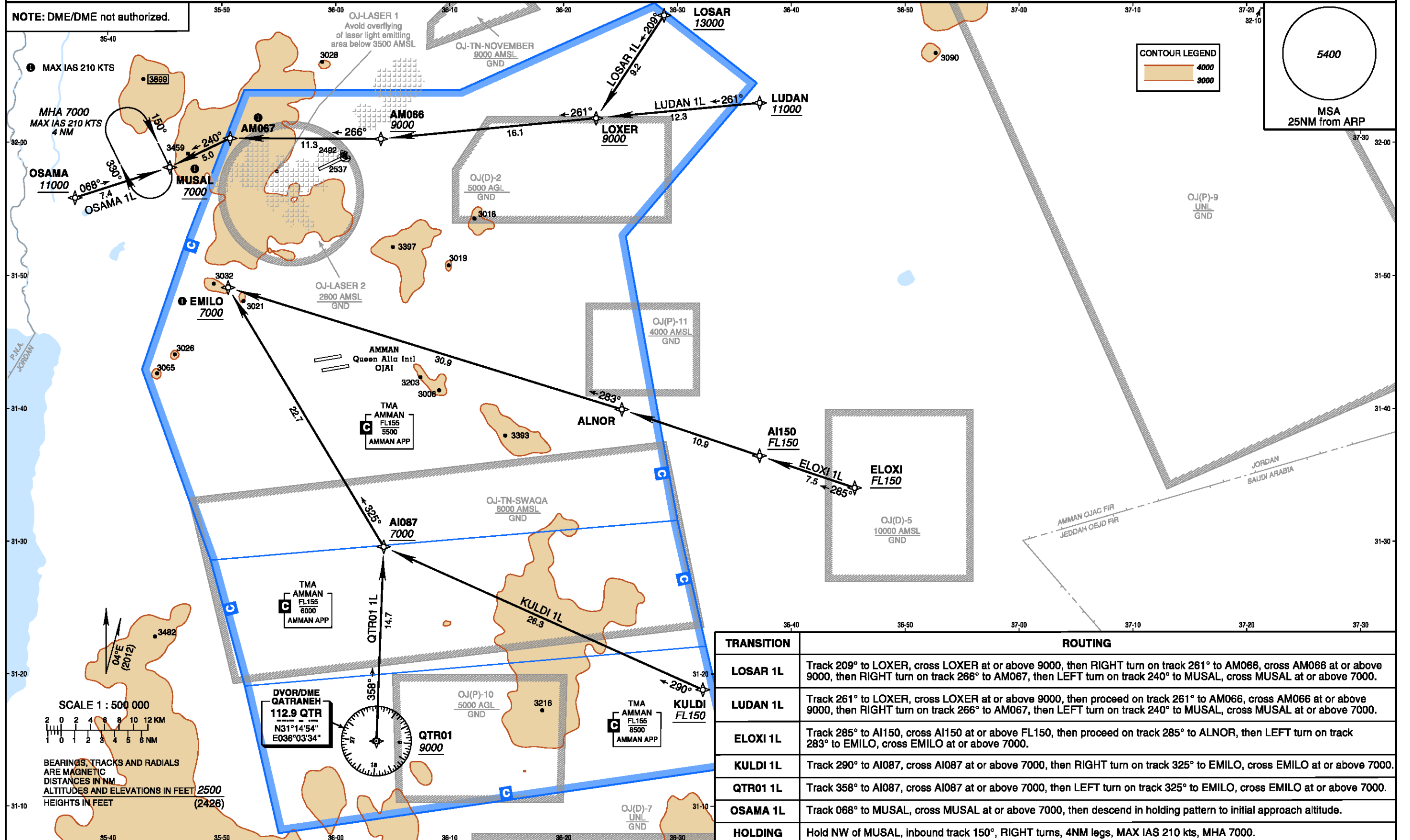
STANDARD ARRIVAL
CHART-INSTRUMENT
(STAR) - ICAO

AD ELEV 2556 FT
Trans Alt 13000
Trans Level FL 150

ATIS 127.600
APP 128.900
TWR 118.100

AMMAN/Marka Intl (OJAM)
STAR RNAV (GNSS) RWY 06

LOSAR 1L, LUDAN 1L, ELOXI 1L, KULDI 1L, QTR01 1L, OSAMA 1L RNAV (GNSS) ARRIVAL



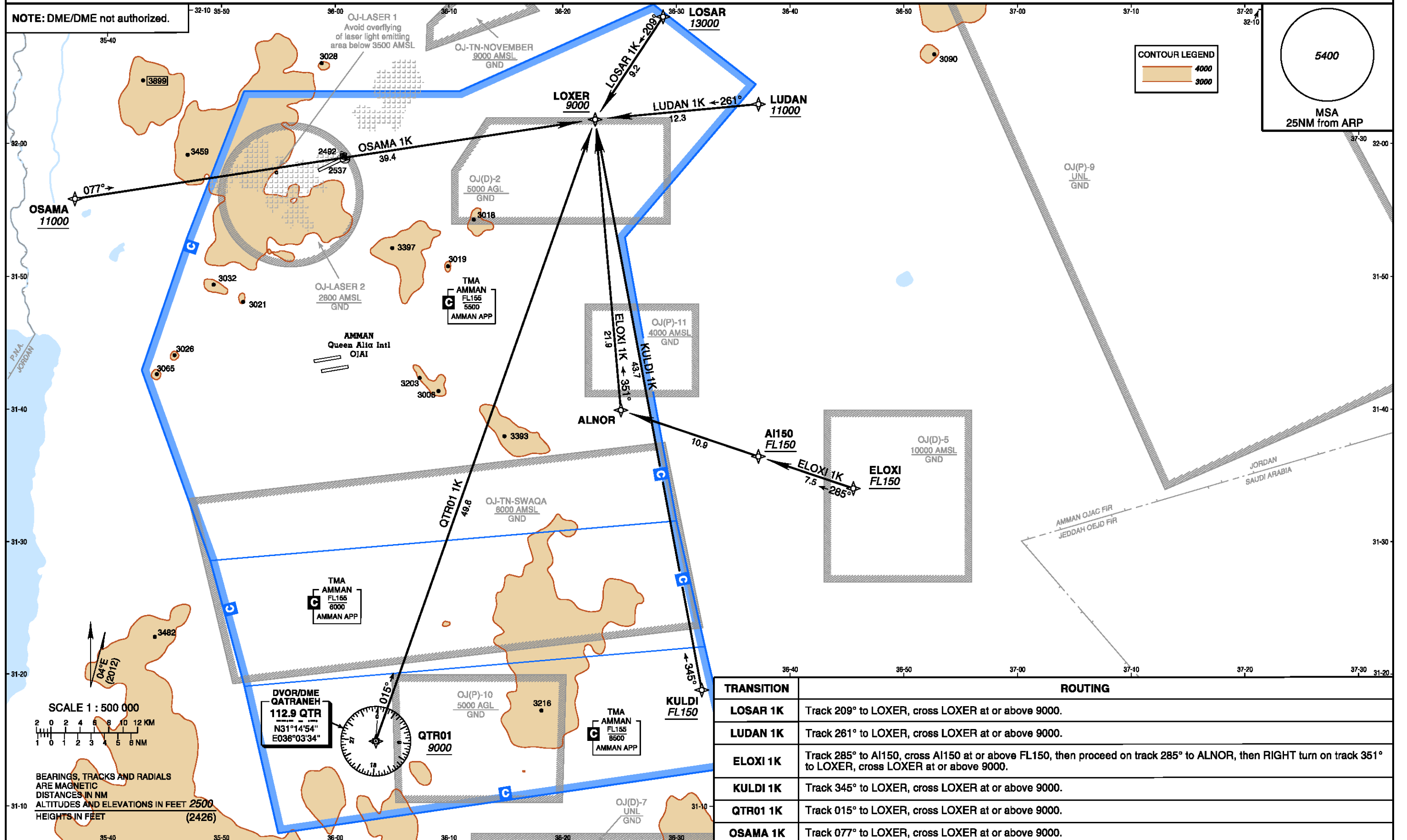
STANDARD ARRIVAL
CHART-INSTRUMENT
(STAR) - ICAO

AD ELEV 2556 FT
Trans Alt 13000
Trans Level FL 150

ATIS 127.600
APP 128.900
TWR 118.100

AMMAN/Marka Intl (OJAM)
STAR RNAV (GNSS) RWY 24

LOSAR 1K, LUDAN 1K, ELOXI 1K, KULDI 1K, QTR01 1K, OSAMA 1K RNAV (GNSS) ARRIVAL



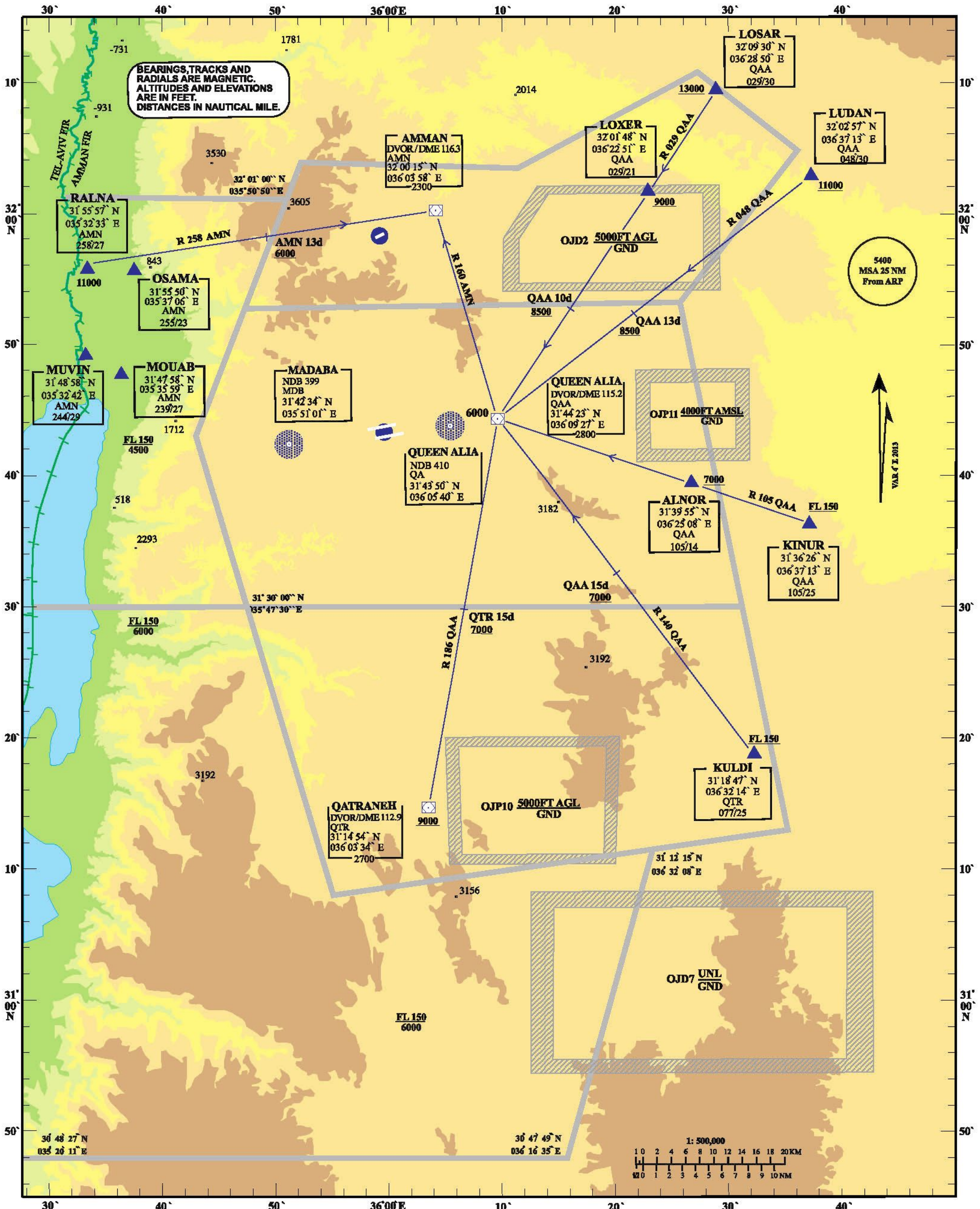
STANDARD ARRIVAL CHART
INSTRUMENT (STAR) - ICAO

TRANSITION ALTITUDE
13000FT

TWR 118.1
APP 128.9

AMMAN / MARKA
(OJAM) RWY 24

KULDI 4A QTR 4A
LUDAN 4A LOSAR 4A
RALAN 4A KINUR 4A



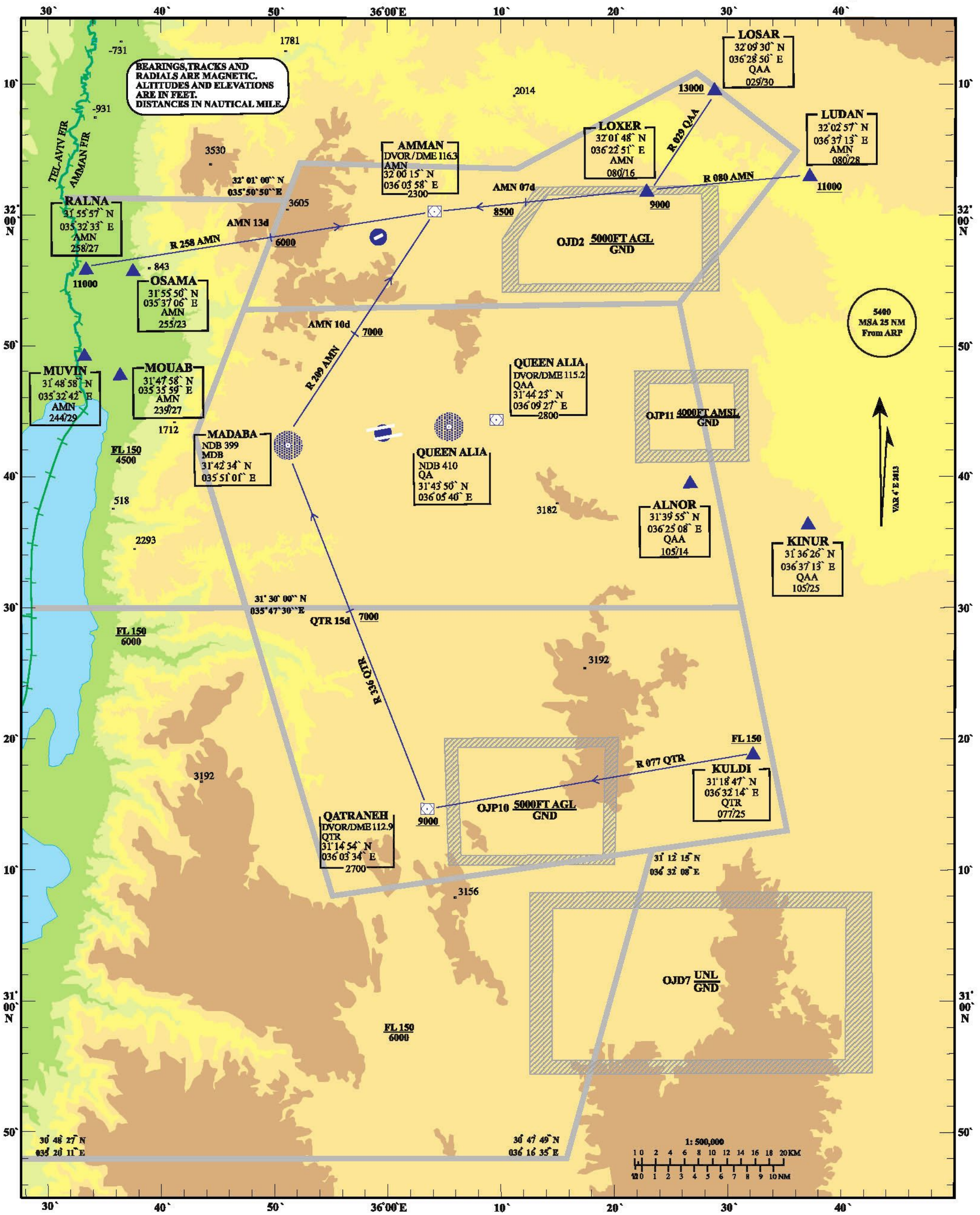
STANDARD ARRIVAL CHART
INSTRUMENT (STAR) - ICAO

TRANSITION ALTITUDE
13000FT

TWR 118.1
APP 128.9

AMMAN / MARKA
(OJAM) RWY 06

KULDI 5A LUDAN 5A RALNA 5A
QTR 5A LOSAR 5A

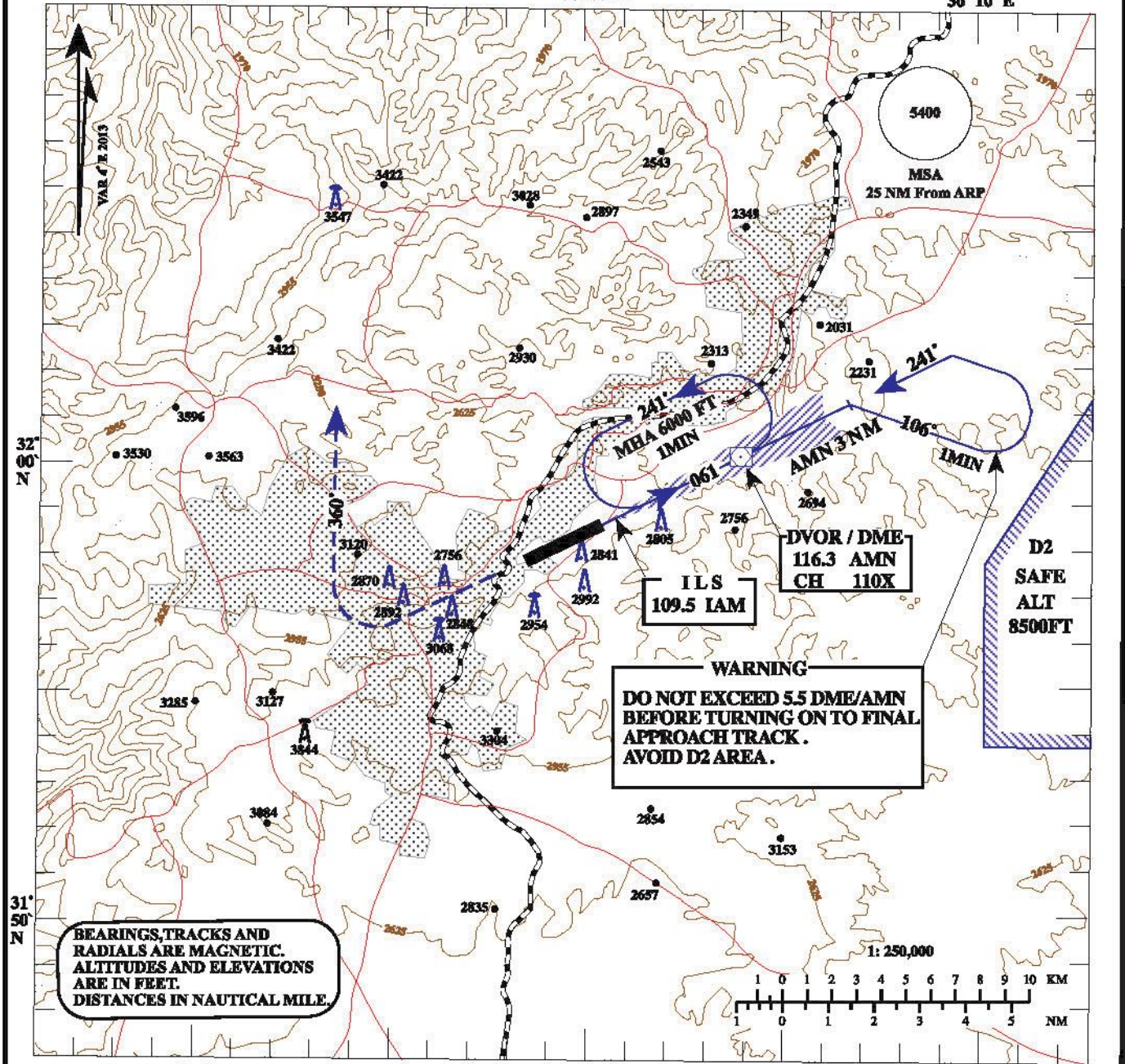


INSTRUMENT APPROACH
CHART - ICAO
35° 50' E

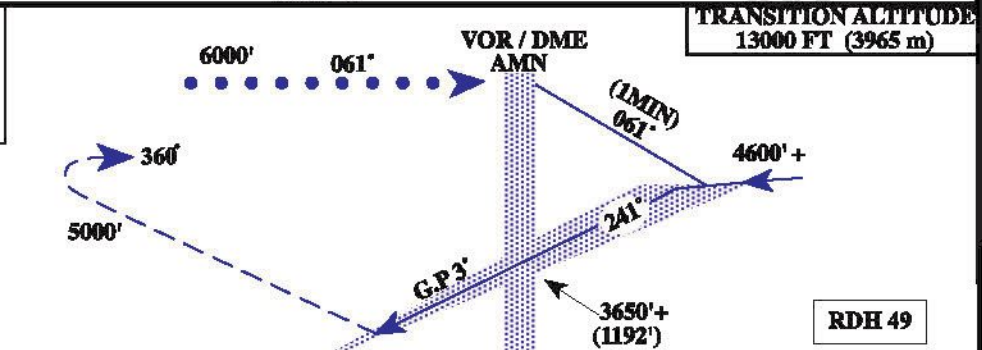
AERODROME ELEV. 2556 FT
HEIGHTS RELATED TO
THE RWY 24 ELEV. 2459 FT

APP 128.9
TWR 118.1

AMMAN / MARKA
ILS RWY 24
(OJAM)
36° 10' E



MISSED APPROACH:
CLIMB ON RWY HDG TO
5000 FT THEN TURN RIGHT
HDG 360° AND CONTACT ATC



ELEV 2459 FT
(THR RWY 24)

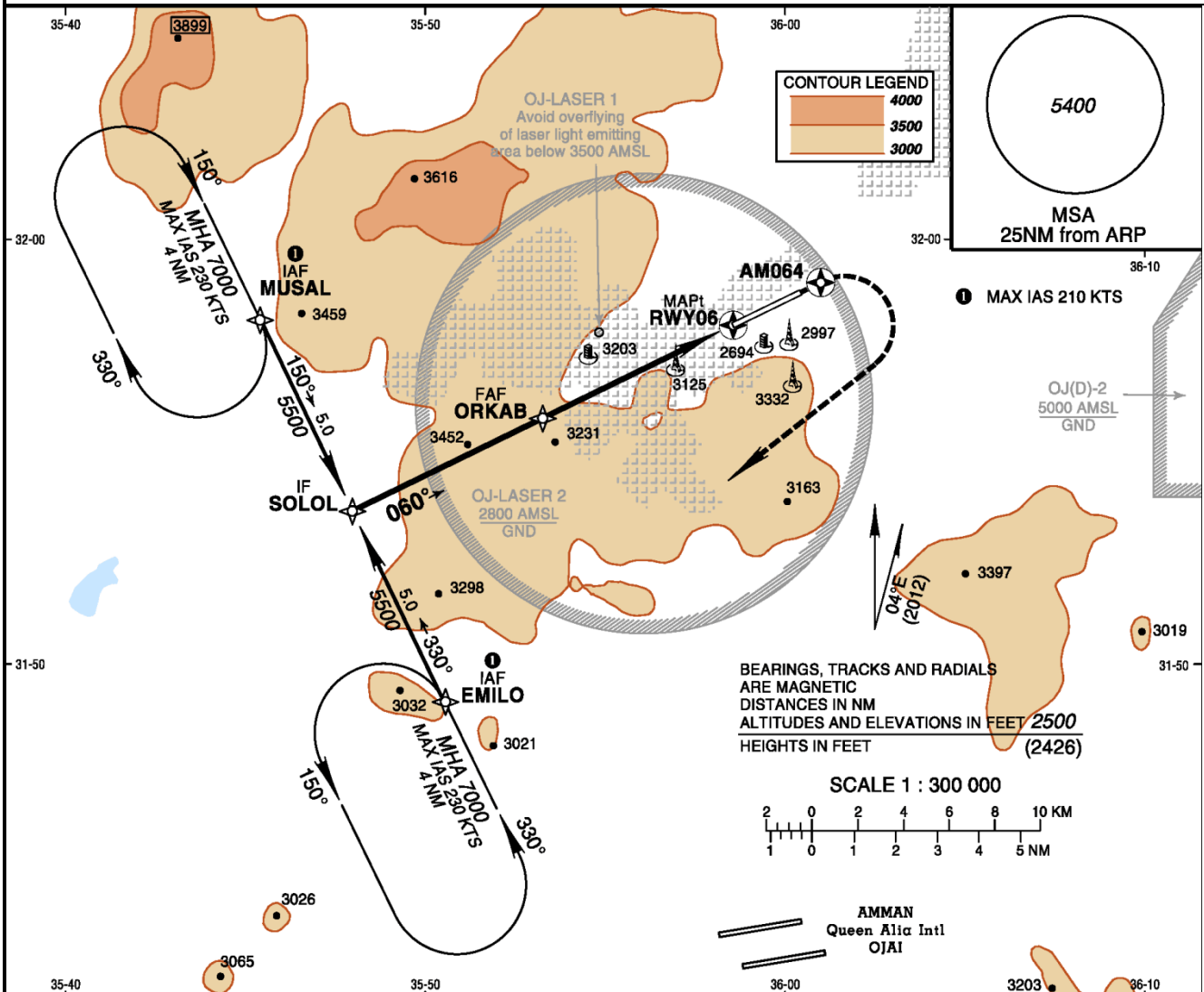
	9	8	7	6	5	4	3	2	1	0	1	2	3	4	5	6	7	8	9	10	NM
DA / H											A	B	C	D	CIRCLING						
STRAIGHT-IN APPROACH	CAT 1										2728 (270)	2738 (280)	2748 (290)	2758 (300)	ALL AIRCRAFT TYPES						
	NO GP (LOC ONLY)										2848 (390)				4000 (1445)						

INSTRUMENT
APPROACH
CHART - ICAO

AD ELEV 2556 FT
HEIGHTS RELATED TO
THR RWY 06 ELEV 2556 FT

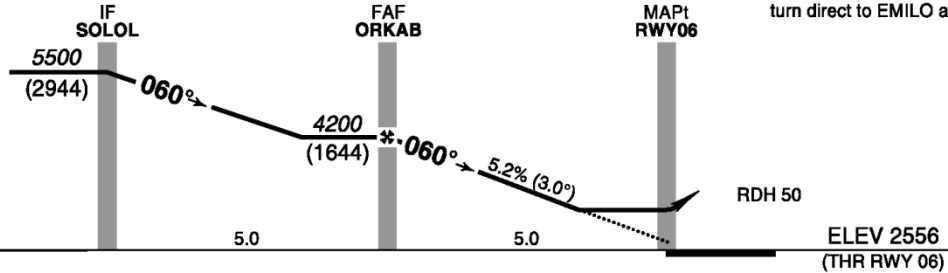
ATIS	127.600
APP	128.900
TWR	118.100

AMMAN/Marka Intl (OJAM)
RNAV (GNSS) RWY 06



Trans Altitude 13000
Trans Level FL 150

MISSED APPROACH:
Climb to 7000.
Direct to AM064, then RIGHT
turn direct to EMILO and hold.



NM 13 12 11 10 9 8 7 6 5 4 3 2 1 0 NM

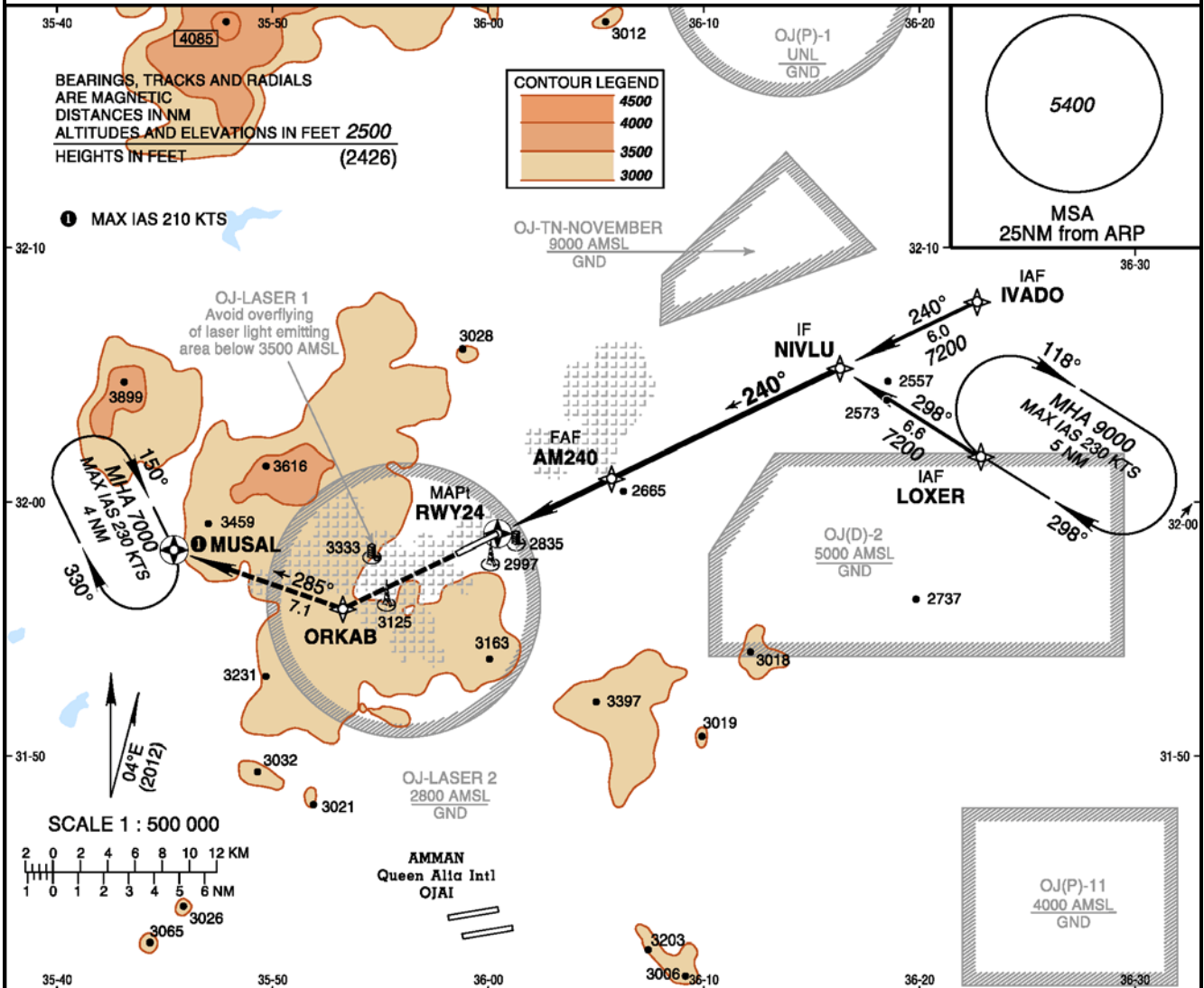
STRAIGHT-IN APPROACH					ADVISORY INFORMATION ONLY			
LNAV/VNAV	OCA(H)	3380 (824)			FAF to THR	NM	4	3
LNAV	OCA(H)	3480 (924)			Altitude (Height)		3830 (1274)	3511 (955)
CIRCLING		A	B	C	D	1. For uncompensated BARO-VNAV systems, procedure not authorized below 5°C (41°F).		
		Not authorized				2. When local altimeter not received, procedure not authorized.		
					3. No turn before MAPt.			
					4. Timing not authorized for defining the MAPt.			
					5. Missed approach turn speed MAX IAS 210 KTS.			

INSTRUMENT
APPROACH
CHART - ICAO

AD ELEV 2556 FT
HEIGHTS RELATED TO
THR RWY 24 ELEV 2459 FT

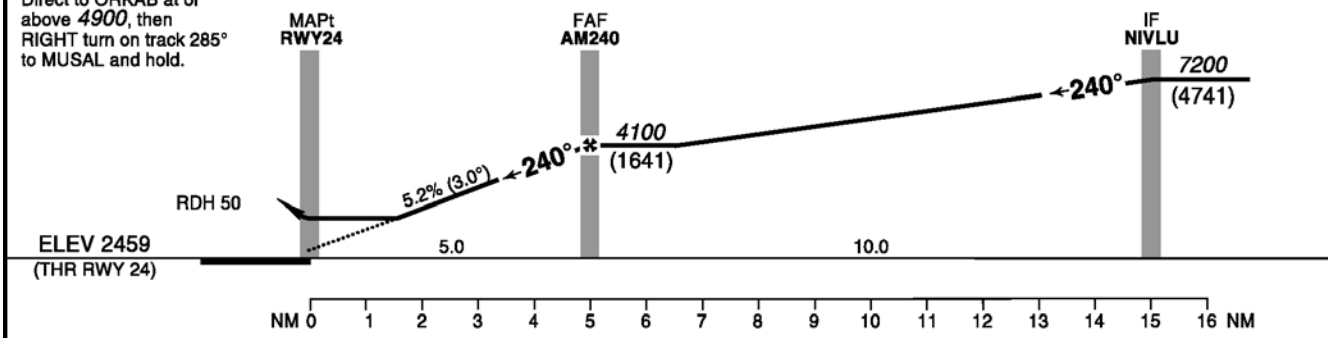
ATIS	127.600
APP	128.900
TWR	118.100

AMMAN/Marka Intl (OJAM)
RNAV (GNSS) RWY 24



MISSED APPROACH:
Climb to 7000.
Direct to ORKAB at or
above 4900, then
RIGHT turn on track 285°
to MUSAL and hold.

Trans Altitude 13000
Trans Level FL 150



STRAIGHT-IN APPROACH		A	B	C	D	ADVISORY INFORMATION ONLY				
LNAV/VNAV	OCA(H)	3120 (661)		3130 (671)		FAF to THR	NM	4	3	2
LNAV	OCA(H)		3150 (691)			Altitude (Height)		3733 (1274)	3414 (955)	3096 (637)
CIRCLING		A	B	C	D					
Not authorized										

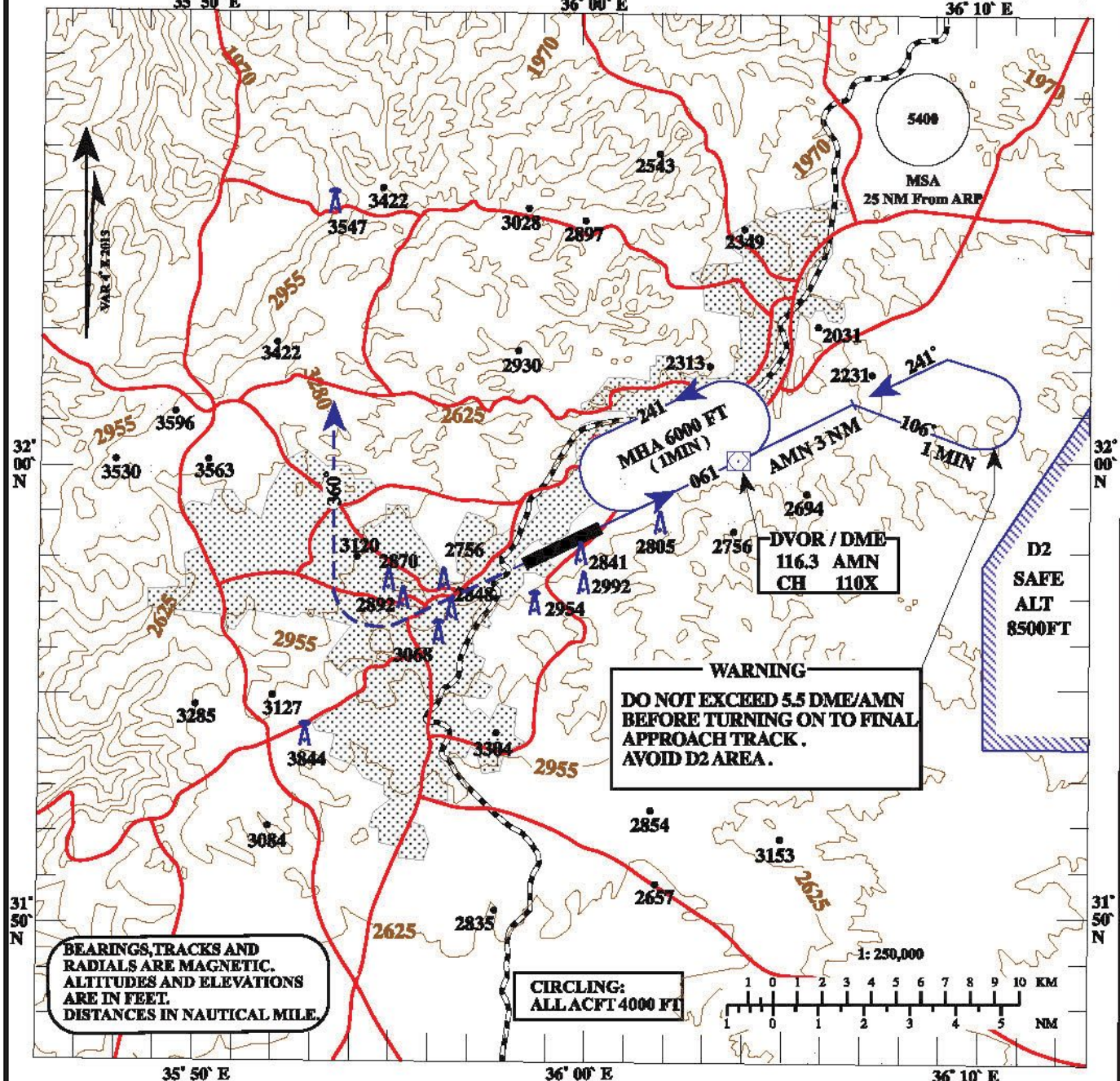
1. For uncompensated BARO-VNAV systems, procedure not authorized below 5°C (41°F).
2. When local altimeter not received, procedure not authorized.
3. No turn before MAPt.
4. Timing not authorized for defining the MAPt.

**INSTRUMENT APPROACH
CHART - ICAO**

**AERODROME ELEV. 2556 FT
HEIGHTS RELATED TO
THE RWY 24 ELEV. 2459 FT**

**APP 128.9
TWR 118.1**

**AMMAN / MARKA
VOR RWY 24
(OJAM)**



MISSED APPROACH:
CLIMB ON RWY HDG TO
5000 FT THEN TURN RIGHT
HDG 360° AND CONTACT ATC

TRANSITION ALTITUDE
13000 FT (3965 m)

VOR
MDA/H 3200/802

ELEV 2459 FT

(THR RWY 24)

