

# NEGARA BRUNEI DARUSSALAM

**AIRAC  
AIP SUPPLEMENT**

TEL : 673-2-331730  
AFS : WBSBYNYX  
FAX : 673-2-331706  
673-2-331730  
E-mail: [ais.brunei@civil-aviation.gov.bn](mailto:ais.brunei@civil-aviation.gov.bn)  
Website: [www.civil-aviation.gov.bn](http://www.civil-aviation.gov.bn)

**AERONAUTICAL INFORMATION SERVICE  
DEPARTMENT OF CIVIL AVIATION  
MINISTRY OF COMMUNICATIONS  
BRUNEI INTERNATIONAL AIRPORT,  
BB2513**

08/18  
03<sup>RD</sup> MAY

## **CONVERSION OF ANDUKI HELIPORT AD3 TO AD2 ANDUKI AERODROME**

### **1. INTRODUCTION**

- 1.1 This AIP Supplement is to notify the conversion of Anduki Heliport to Anduki Aerodrome with the characteristics including relevant charts of the aerodrome.
- 1.2 The information of Anduki Aerodrome characteristics and charts are shown on page 2 until 15 of this AIP Supplement.
- 1.3 The following information shall be incorporated into AIP Brunei Darussalam Page WBAK AD 2-1 section AD 2 AERODROME.

### **2. CANCELLATION**

- 2.1 This AIP Supplement will remain active until the information is incorporated in the AIP Brunei Darussalam.

**MOHAMMAD NAZRI MOHAMMAD YUSOF**  
Acting Director of Civil Aviation  
Department of Civil Aviation  
Negara Brunei Darussalam

## AD 2. AERODROMES

### WBAK AD 2.1 AERODROME LOCATION INDICATOR AND NAME

WBAK – ANDUKI / Private

### WBAK AD 2.2 AERODROME GEOGRAPHICAL AND ADMINISTRATIVE DATA

1	ARP coordinates and site at AD	0438151N 11422561E
2	Direction and distance from (city)	Nil
3	Elevation/Reference temperature	2.78M / Nil
4	MAG VAR/Annual change	0.36° E
5	Heliport Administration, address, telephone, telefax, AFS	Anduki Airfield, Brunei Shell Petroleum Company Sendirian Berhad, Seria KB3534, Negara Brunei Darussalam.  Tel Nr : 673-3372203 Fax Nr : 673-3372125 AFS: : Nil
6	Types of traffic permitted (IFR/VFR)	VFR
7	Remarks	Nil

### WBAK AD 2.3 OPERATIONAL HOURS

1	Heliport Administration	2300 – 0800UTC
2	Customs and immigration	By prior arrangement
3	Health and Sanitation	By prior arrangement
4	AIS Briefing Office	Nil
5	ATS Reporting Office (ARO)	Nil
6	MET Briefing Office	Nil
7	ATS	2200 – 1000UTC
8	Fuelling	MON-SUN between 2200/1000 UTC Pre-notified during working hours : Tel : 673-3372203
9	Handling	2200 – 1000UTC
10	Security	H24
11	De-icing	Nil
12	Remarks	Private Aerodrome

### WBAK AD 2.4 HANDLING SERVICES AND FACILITIES

1	Cargo-handling facilities	By prior arrangement
2	Fuel / Oil types	Jet A1
3	Fuelling facilities / Capacity	Pre-notified during working hours : Tel : 673-3372203
4	De-icing facilities	Nil
5	Hangar space for visiting aircraft	Nil
6	Repair facilities for visiting aircraft	Nil
7	Remarks	Nil

### WBAK AD 2.5 PASSENGER FACILITIES

1	Hotels	Seria 6km, Kuala Belait 22km, Bandar Seri Begawan 75km
2	Restaurants	Seria 6km, Lumut 11km, Kuala Belait 22 km, Bandar Seri Begawan 75km
3	Transportation	By prior arrangement
4	Medical facilities	First Aid Only (semi-equipped health centre 9km away and fully equipped hospital 22km away)
5	Bank and Post Office	Seria 6km, Kuala Belait 22km, Bandar Seri Begawan 75km
6	Tourist Office	Nil
7	Remarks	Nil

### WBAK AD 2.6 RESCUE AND FIRE FIGHTING SERVICES

1	AD category for fire fighting	Category 3 ( 2200 / 1000UTC )
2	Rescue equipment	<p>(1) Rescue vehicle available for immediate use are :-  1 x Rescue Vehicle  1 x Crash Rescue Tender (CRT)</p> <p>(2) Extinguishing Agents available in the CRT are:-  4500 litres water (Discharge rate of 4000litre/min)  500 litres foam agent  150 kg dry chemicals  5 kg CO2 (portable)</p> <p>(3) Additional reserves maintained at the main BSP Fire Station are:-  1 x Crash Rescue Tender (CRT)  2 x Foam/water Tender (FWT)  1 x Rapid Rescue Vehicle (RRV)  1 x Hose Layer  3 x Ambulances  1 x Emergency Common Vehicle (ECV)</p>
3	Capacity for removal of disable aircraft	Available S92 equivalent
4	Remarks	Nil

### WBAK AD 2.7 SEASONAL AVAILABILITY – CLEARING

1	Types of clearing equipment	Nil
2	Clearance priorities	Nil
3	Remarks	Nil

### WBAK AD 2.8 APRONS, TAXIWAYS AND CHECK LOCATIONS/POSITIONS DATA

1	Apron/Helicopter stands surface and strength	Tarmac / Concrete / Not Available
2	Taxiway width, surface and strength	20M, Tarmac and Concrete and A, B and C
3	Altimeter check location and elevation	Apron and 9ft
4	VOR / INS checkpoints	Nil
5	Remarks	Nil

### WBAK AD 2.9 SURFACE MOVEMENT GUIDANCE AND CONTROL SYSTEM AND MARKINGS

1	Final approach and take-off markings	Solid white line around perimeter, broken white centre-line, 'piano keys' at thresholds with white 'H' and orientation marked (05/23)
2	TWY, Air TWY, Air Transit Route Markers	Yellow taxiway markings, blue edge lighting, holding point guard lights.
3	Remarks	Illuminated Holding Point and FATO exit Marker Boards

### WBAK AD 2.10 AERODROME OBSTACLES

In approach/TKOF areas			At helicopter		Remarks
1A			1B		3
Rwy/Area affected	Obstacle type Elevation Markings/LGT	Coordinates	Obstacle type Elevation Markings/LGT	Coordinates	Nil
a	b	c	a	b	
Nil	Nil	Nil	Nil	Nil	

### WBAK AD 2.11 METEOROLOGICAL INFORMATION PROVIDED

1	Associated MET Office	WBSB / Brunei International
2	Hours of service MET Office outside hours	H24
3	Office responsible for TAF preparation Periods of validity	Meteorological Forecast Office H30
4	Trend forecast interval of issuance	TAF 0024:0606:1212 and 1818: Takeoff Forecast available for schedule flights and unscheduled flights (on request only)
5	Briefing/Consultation provided	Forecast, Briefing and Routed Area forecast
6	Flight documentation Language (s) used	English
7	Charts and other information available for briefing or consultation	Surface Chart : SIG WX Chart : Upper Chart, Satellite weather pictures. NWP Chart
8	Supplementary equipment available for providing information	Doppler Radar/ Key Board Display System/ AWOS/AFTN
9	ATS units provided with information	DATIS
10	Additional information (limitation of services, etc.)	Forecaster available as from 2130UTC to 0600UTC

### WBAK AD 2.12 RUNWAY PHYSICAL CHARACTERISTICS

Designations RWY NR	TRUE & MAG BRG	Dimensions of RWY (M)	Strength (PCN) and surface of RWY and SWY	THR Coordinates	THR elevation and highest elevation of TDZ of precision APP Rwy
1	2	3	4	5	6
05	055°	810M	Asphalt/Not Available	05 THR : 4°37.99'N 114°22.55'E	Nil
23	235°	810M	Asphalt/Not Available	23 THR : 4°38.24'N 114°22.91E	Nil

### WBAK AD 2.13 DECLARED DISTANCES

<i>RWY Designator</i>	<i>TORA (M)</i>	<i>TODA (M)</i>	<i>ASDA (M)</i>	<i>LDA (M)</i>	<i>Remarks</i>
1	2	3	4	5	6
05	Nil	810M	Nil	Nil	Nil
23	Nil	810M	Nil	Nil	Nil

### WBAK AD 2.14 APPROACH AND RUNWAY LIGHTING

RWY Designator	APCH LGT Type LEN INST	THR LGT Colour of W-Bar	VASIS (MEHT) PAPI	TDZ LGT LEN
1	2	3	4	5
05 & 23	Single bar, with running strobes	Nil	A-PAPI	Nil
Rwy Centre-line Lgt Length, spacing colour INTST	Rwy edge LGT LEN, spacing colour INTST	Rwy End LGT colour INTST W/BAR	SWY LGT LEN (M) colour	Remark
6	7	8	9	10
Nil	White edge lighting	Nil	Nil	Nil

### WBAK AD 2.15 OTHER LIGHTING, SECONDARY POWER SUPPLY

1	ABN/IBN location, characteristics and hours of operation	Nil
2	LDI location and LGT Anemometer location and LGT	Nil Control Tower and Not available
3	TWY edge and centre line lighting	Inset blue edge lights
4	Secondary power supply/switch-over time	Nil
5	Remarks	Nil

### WBAK AD 2.16 HELICOPTER LANDING AREA

1	Coordinates TLOF or THR of FATO geoid undulation	05 THR : 4°37.99'N 114°22.55'E 23 THR : 4°38.24'N 114°22.91E
2	TLOF and/or FATO elevation M/FT	2.78M
3	TLOF and FATO area dimensions, surface, strength, marking	Nil and 810M x 32M, asphalt, nil
4	True BRG of FATO	235°/055°
5	Declared distance available	810M
6	APP and FATO lighting	Single bar with running strobes and white edge lighting
7.	Remarks	Nil

### WBAK AD 2.17 ATS AIRSPACE

1	Designation and lateral limits	ATZ
2	Vertical limits	2000 ft
3	Airspace classification	Class C
4	ATS unit call sign Language(s)	Anduki Tower, English
5	Transition altitude	11,000 ft
6	Remarks	Nil

### WBAK AD 2.18 ATS COMMUNICATION FACILITIES

Service Designation	Call sign	Frequency	Hours of Operation	Remarks
1	2	3	4	5
APP	Nil	Nil	Nil	Nil
TWR	Anduki Tower	122.10 Mhz	2200 – 1000 UTC	Nil
FIS	Anduki Tower	122.10 Mhz	2200 – 1000 UTC	Nil
OFFSHORE LOGISTICS	Offshore platforms/Rigs	129.10Mhz	2200 – 1000 UTC	Nil
ANDUKI LOGISTICS	Anduki Tower	130.60Mhz	2200 – 1000 UTC	Nil



### **WBAK AD 2.19 RADIO NAVIGATION AND LANDING AIDS**

1	Type of aid, CAT OF ILS/MLS (For VR / ILS / MLS give VAR)	NDB
2	ID	AKI
3	Frequency	250.0 MHz
4	Hours of operation	H24
5	Site of Transmitting Antenna Coordinates	4°37' 48.9'N 114°22 18.2'E
6	Elevation of DME transmitting antenna	Nil
7	Maintenance Period	Nil

### **WBAK AD 2.20 LOCAL TRAFFIC REGULATIONS**

**NOT APPLICABLE**

### **WBAK AD 2.21 NOISE ABATEMENT PROCEDURES**

**NOT APPLICABLE**

### **WBAK AD 2.22 FLIGHT PROCEDURES**

**NOT APPLICABLE**

### **WBAK AD 2.23 ADDITIONAL INFORMATION**

**NOT APPLICABLE**

### **WBAK AD 2.24 CHARTS RELATED TO AN AERODROME**

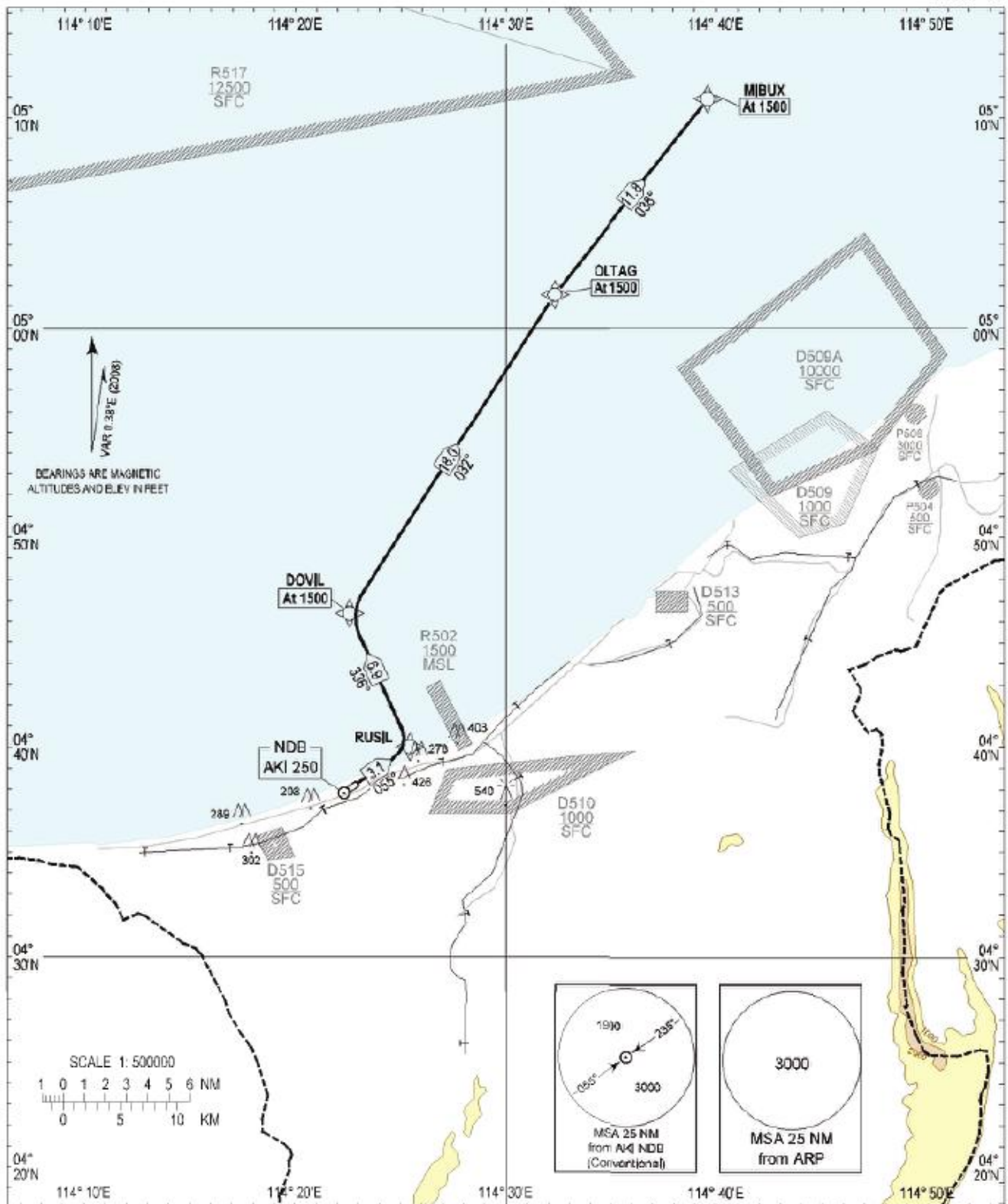
- a) Aerodrome/Heliport Chart
- b) GNSS Standard Departure Chart Instrument (SIDs) Rwy 05
- c) GNSS Standard Arrival Chart Instrument (STAR) Rwy 05
- d) Instrument Approach Chart Rwy 05
- e) GNSS Standard Departure Chart Instrument (SIDs) Rwy 23
- f) GNSS Standard Arrival Chart Instrument (STAR) Rwy 23
- g) Instrument Approach Chart Rwy 23

**STANDARD DEPARTURE CHART  
INSTRUMENT (SID)**

TRANSITION ALTITUDE  
11000ft

TWR 122.10

**ANDUKI  
RNAV (GNSS)  
RWY 05**



**Routing**  
DER05 - RUSIL[A1500,L] - DOVIL[A1500,R] - OLTAG[A1500,R] - MIBUX[A1500]

**Notes**

1. Close-in obstacles exist for RWY 05 departures.
2. For obstacle clearance, climb at 5.0% (minimum) to 1500' AMSL.
3. Critical nav aids: Nil.
4. All waypoints are fly-by.
5. All positions are referenced to WGS84 datum.

**DEPARTURE END RWY 05**

AK05D 043814.49N 1142254.46E

**WAYPOINTS**

RUSIL	044000.65N	1142526.23E
DOVIL	044821.92N	1142234.52E
OLTAG	050135.26N	1143218.83E
MIBUX	051053.70N	1143938.41E

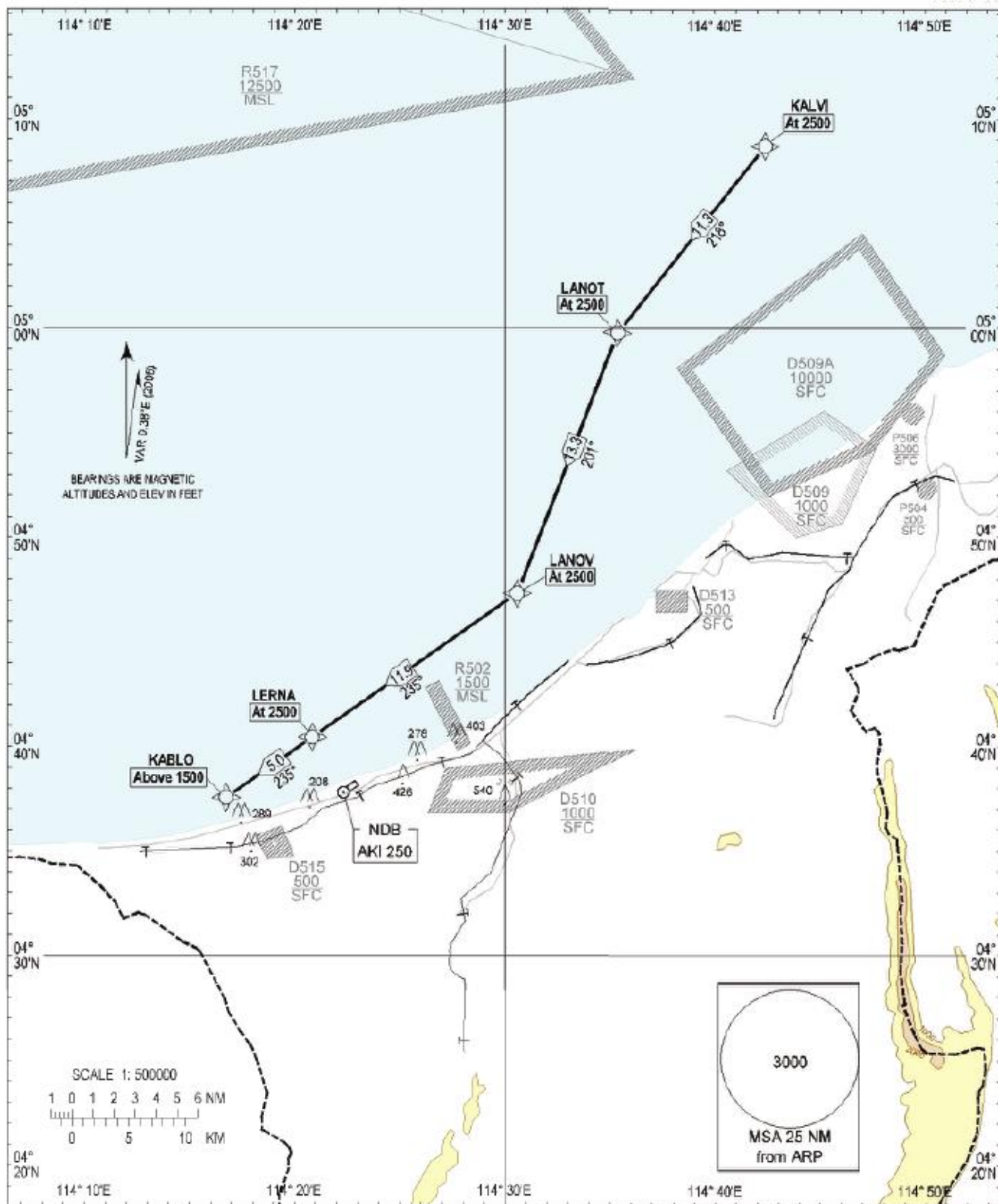
CHANGES: New Chart

**STANDARD ARRIVAL CHART  
INSTRUMENT (STAR)**

TRANSITION ALTITUDE  
11000ft

TWR 122.10

**ANDUKI  
RNAV (GNSS)  
RWY 05**



**Notes**

1. Critical navajds: Nil.
2. All waypoints are fly-by.
3. All positions are referenced to WGS84 datum.

**WAYPOINTS**

KALVI	050842.90N	1144223.66E
LANOT	045947.16N	1143521.91E
LANOV	044719.23N	1143034.62E
LERNA	044027.37N	1142049.40E
KABLO	043734.14N	1141643.38E

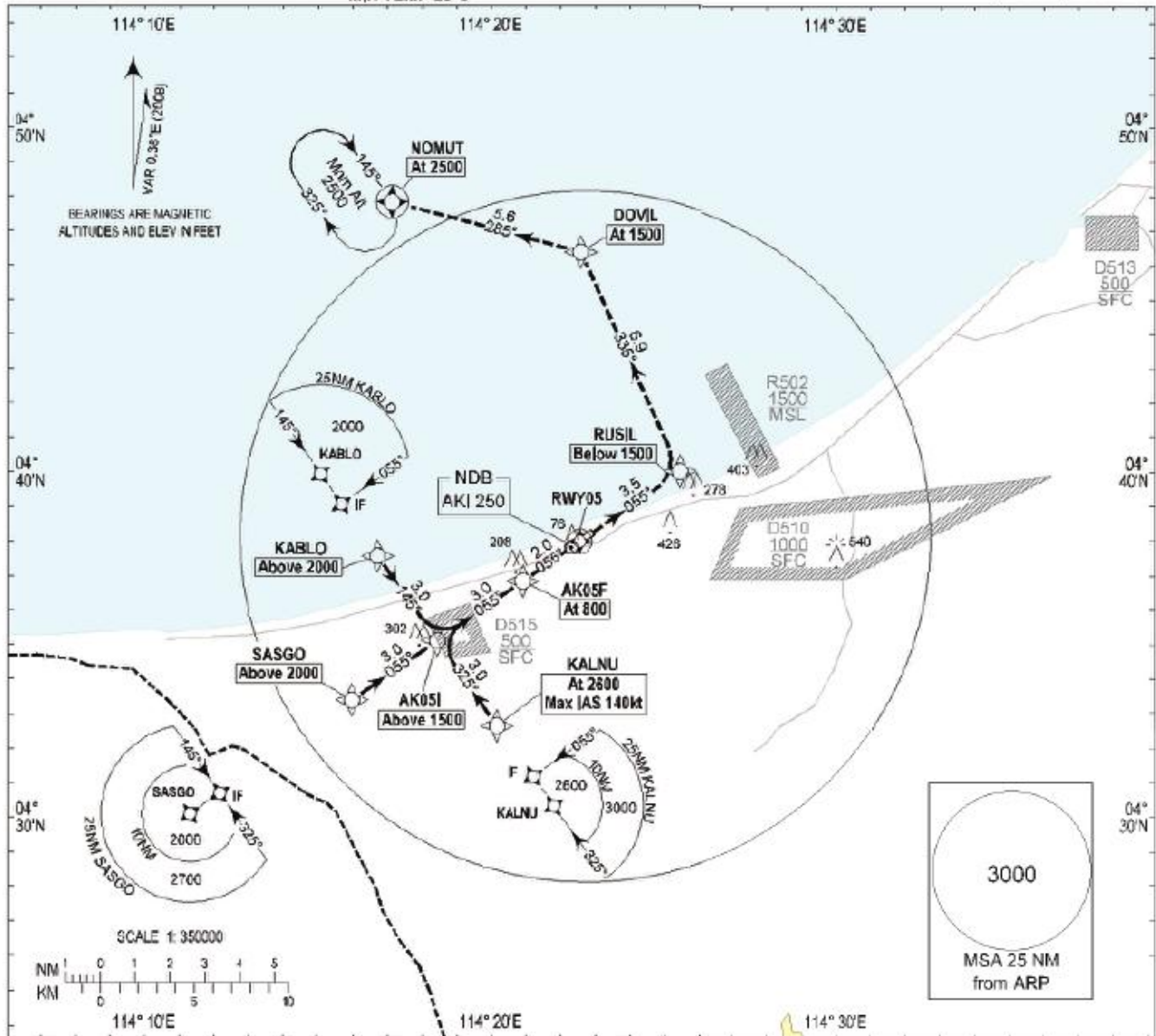
CHANGES: New Chart

**INSTRUMENT  
APPROACH  
CHART - ICAO**

**AERODROME ELEV 9ft**  
HEIGHTS RELATED TO  
THR RWY 05 - ELEV 9ft  
MIN TEMP 20°C

TWR 122.10

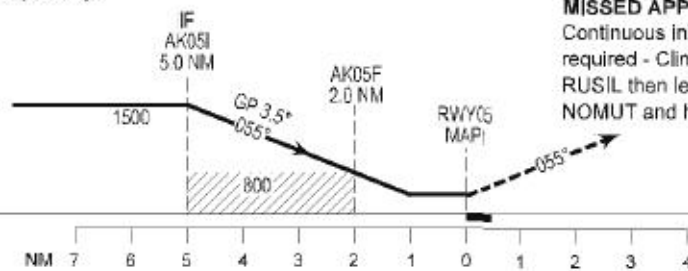
**ANDUKI  
RNAV (GNSS)  
(CAT H) RWY 05**



Transition Altitude: 11000ft

Note: Recommended profile of 3.5° (8.12%).

ELEV 9ft  
(THR RWY 05)



**MISSED APPROACH (RWY05) 4.2%**

Continuous initial climb to 1550' required - Climb straight ahead to RUSIL then left to DOVIL, left to NOMUT and hold.

**OCA(H)**

Category of Aircraft	H	NM TO THR						
		7	6	5	4	3	2	1
LNAV/NAV	390 (381)							
LNAV	410 (401)	2660 (2651)	2290 (2281)	1920 (1911)	1550 (1541)	1170 (1161)	800 (791)	430 (421)

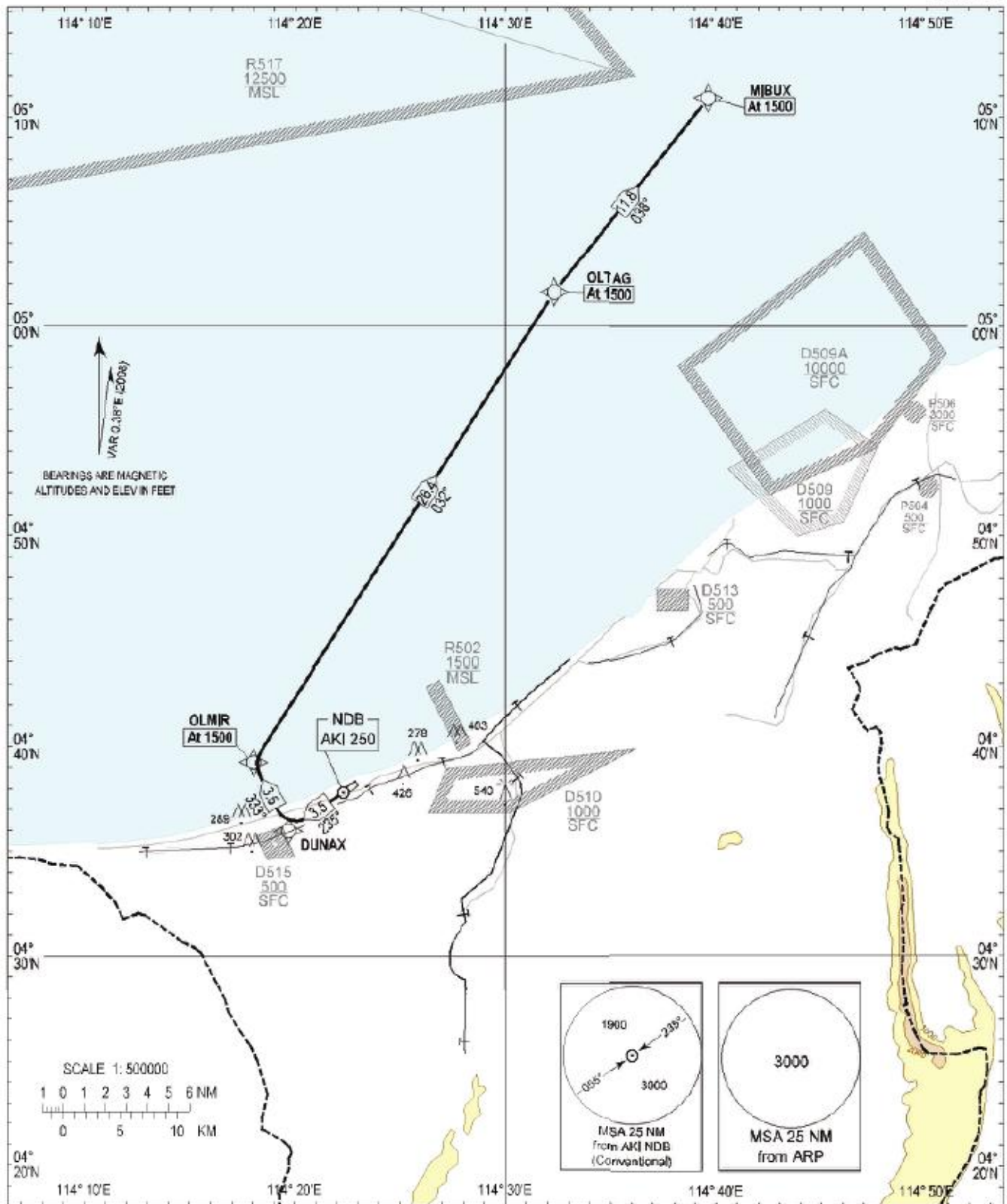
CHANGES: New Chart

**STANDARD DEPARTURE CHART  
INSTRUMENT (S/D)**

**TRANSITION ALTITUDE  
11000ft**

**TWR 122.10**

**ANDUKI  
RNAV (GNSS)  
RWY 23**



**Routing**  
DER23-DUNAX[A1500-,R]-OLMIR[A1500,R]-OLTAG[A1500,R]-MIBUX[A1500]

- Notes**
1. Close-in obstacles exist for RWY 23 departures.
  2. For obstacle clearance, climb at 5.0% (minimum) to 1500' AMSL.
  3. Critical nav aids: Nil.
  4. All waypoints are fly-by.
  5. All positions are referenced to WGS84 datum.

DEPARTURE END RWY 23		
AK23D	043759.40N	1142232.88E
WAYPOINTS		
DUNAX	043558.71N	1141940.37E
OLMIR	043914.40N	1141801.19E
OLTAG	050135.26N	1143218.83E
MIBUX	051053.70N	1143938.41E

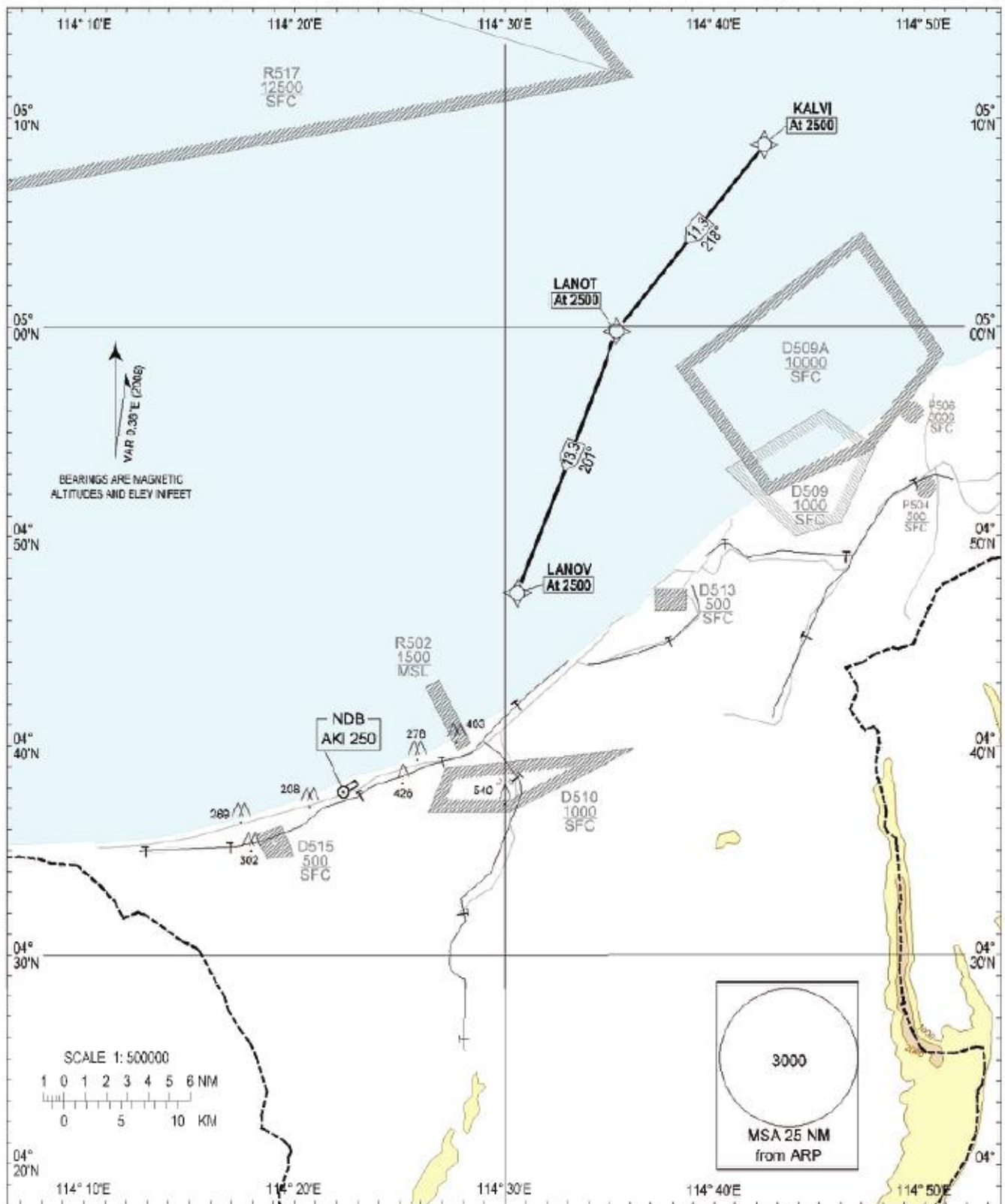
CHANGES: New Chart

**STANDARD ARRIVAL CHART  
INSTRUMENT (STAR)**

**TRANSITION ALTITUDE**  
11000ft

**TWR 122.10**

**ANDUKI  
RNAV (GNSS)  
RWY 23**

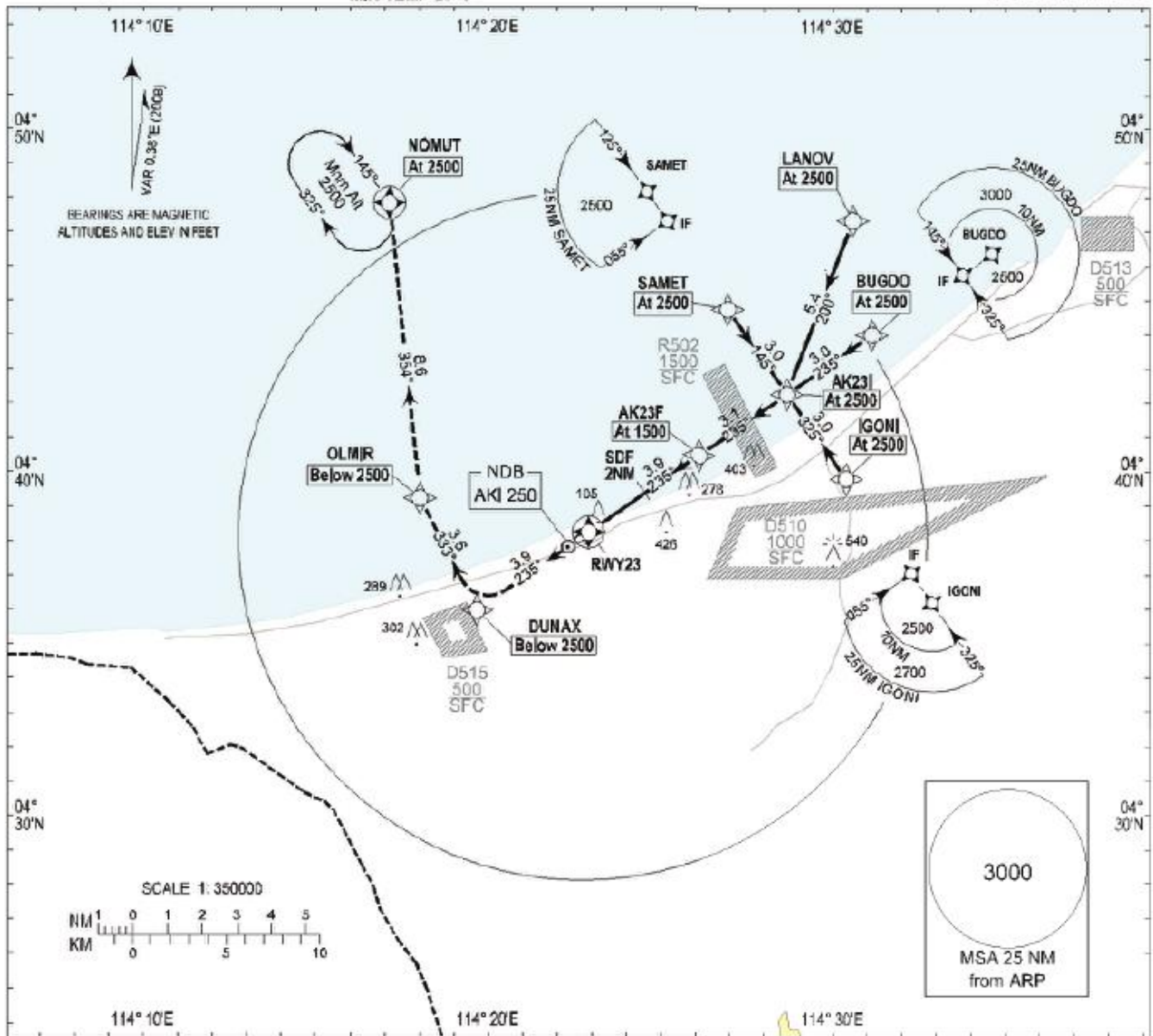


**Notes**

1. Critical nav aids: Nil.
2. All waypoints are fly-by.
3. All positions are referenced to WGS84 datum.

<b>WAYPOINTS</b>		
KALVI	050842.90N	1144223.66E
LANOT	045947.16N	1143521.91E
LANOV	044719.23N	1143034.62E

CHANGES: New Chart

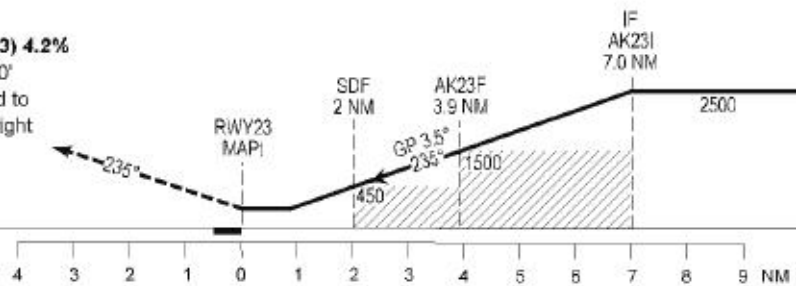


Note: Recommended profile of 3.5° (6.12%).

**MISSED APPROACH (RWY23) 4.2%**

Continuous initial climb to 2500' required - Climb straight ahead to DUNAX then right to OLMIR, right to NOMUT and hold.

RDH 50 FT



Category of Aircraft	H	NM TO THR						
		7	6	5	4	3	2	1
LNAV/NAV	380 (371)							
LNAV	410 (401)	2660 (2651)	2290 (2281)	1920 (1911)	1650 (1541)	1170 (1161)	800 (791)	430 (421)

CHANGES: New Chart